

Tandem allylic Substitution / Conia-ene reaction: A [4+1]- annulation approach to cyclopentenones from MBH-acetates of acetylenic aldehydes

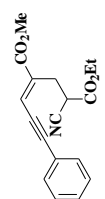
Chada Raji Reddy,* Paridala Kumaraswamy and Motatipally Damoder Reddy

Division of Natural Products Chemistry, CSIR-Indian Institute of Chemical Technology, Hyderabad-
500607

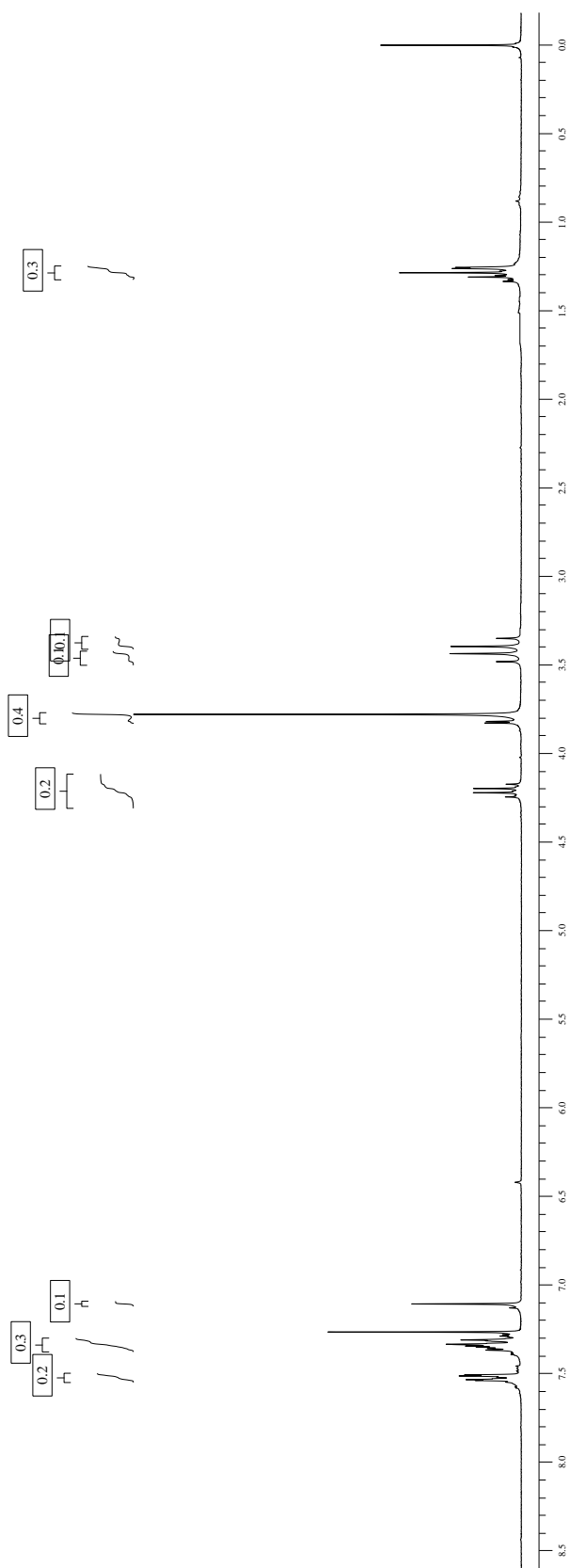
E-mail: rajireddy@iict.res.in

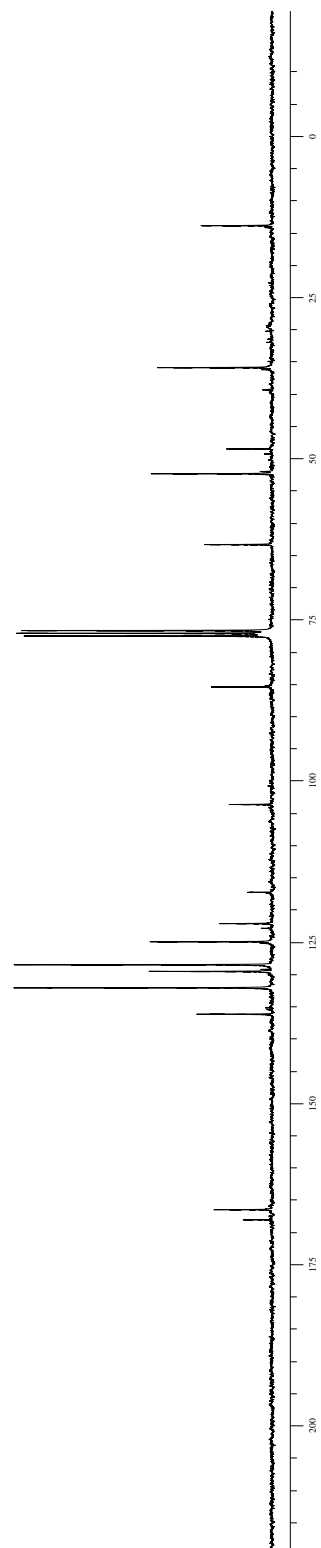
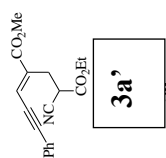
Contents

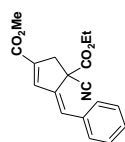
S2-S41 - Copies of ¹H and ¹³C NMR spectra



3a'

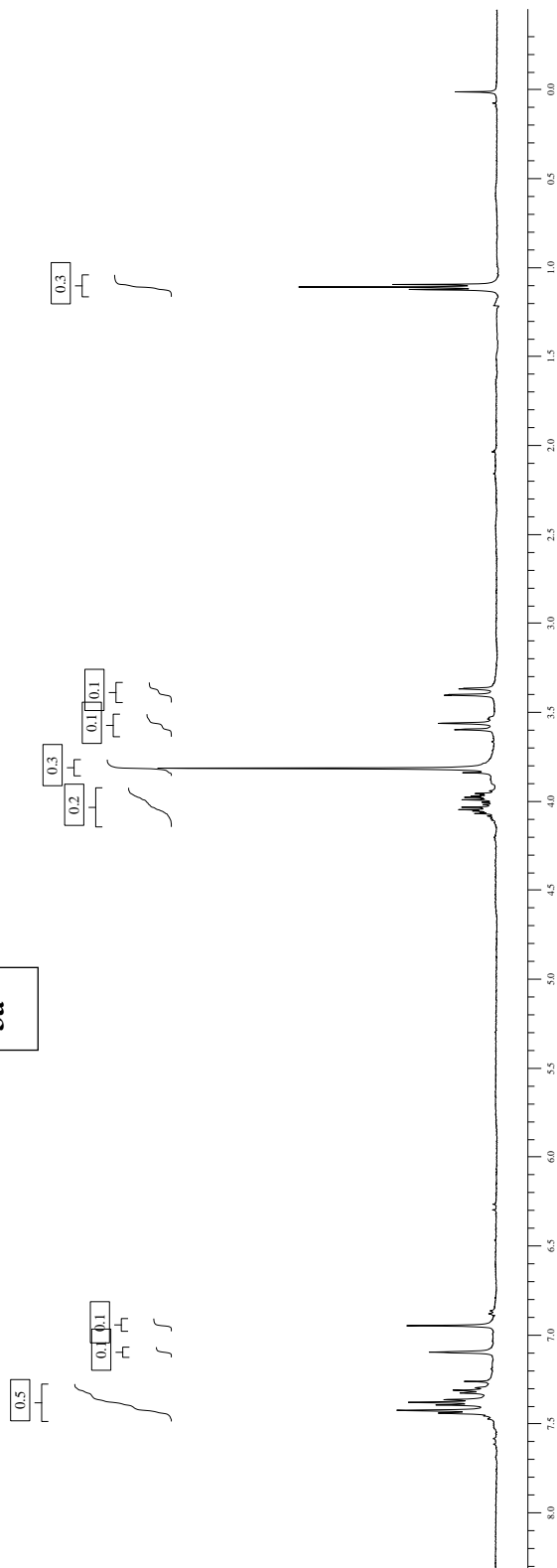


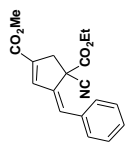




3a

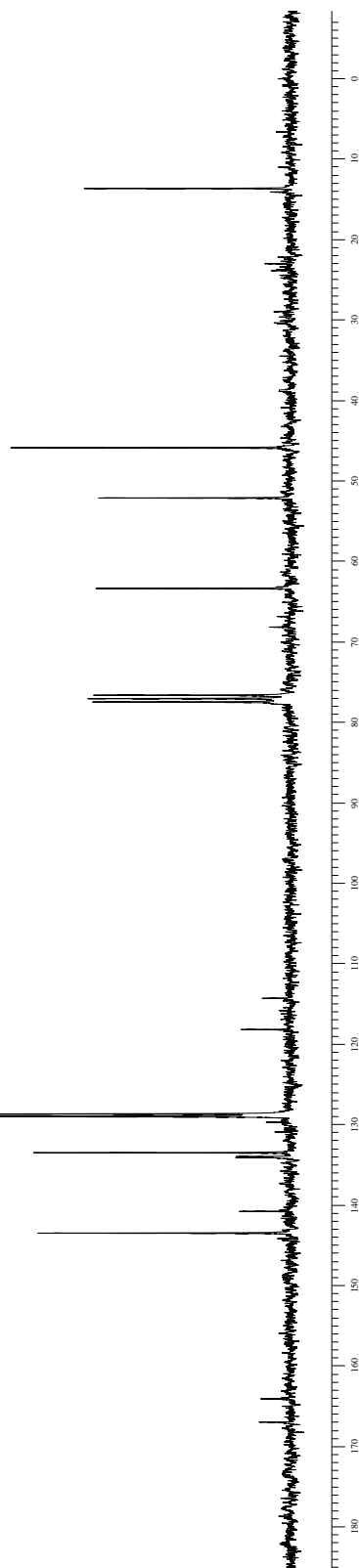
3a

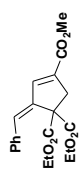




3a

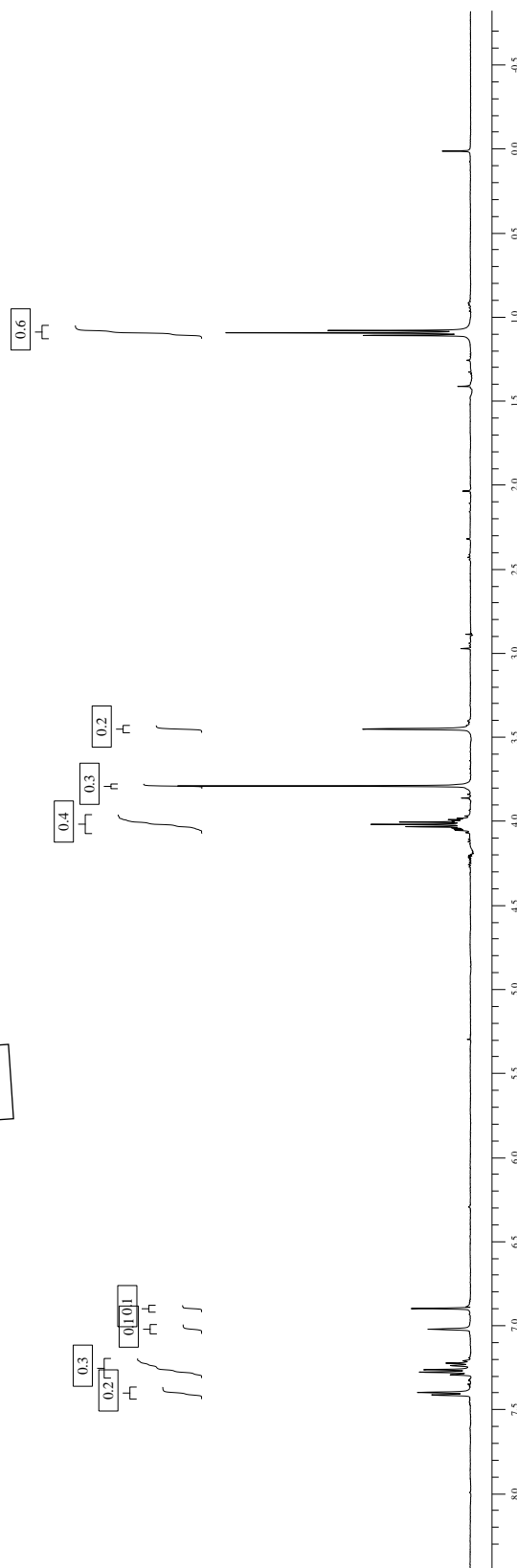
3a

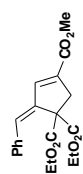




3b

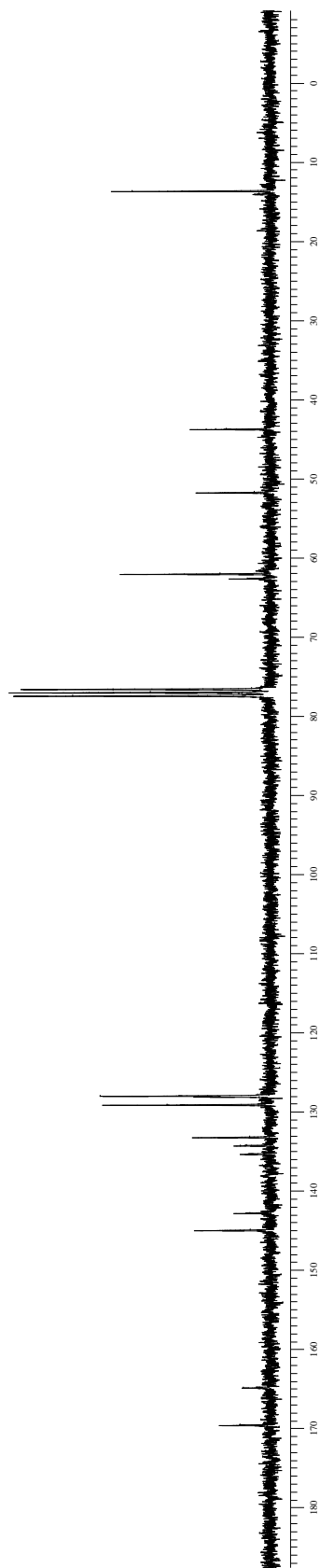
3b

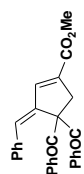




3b

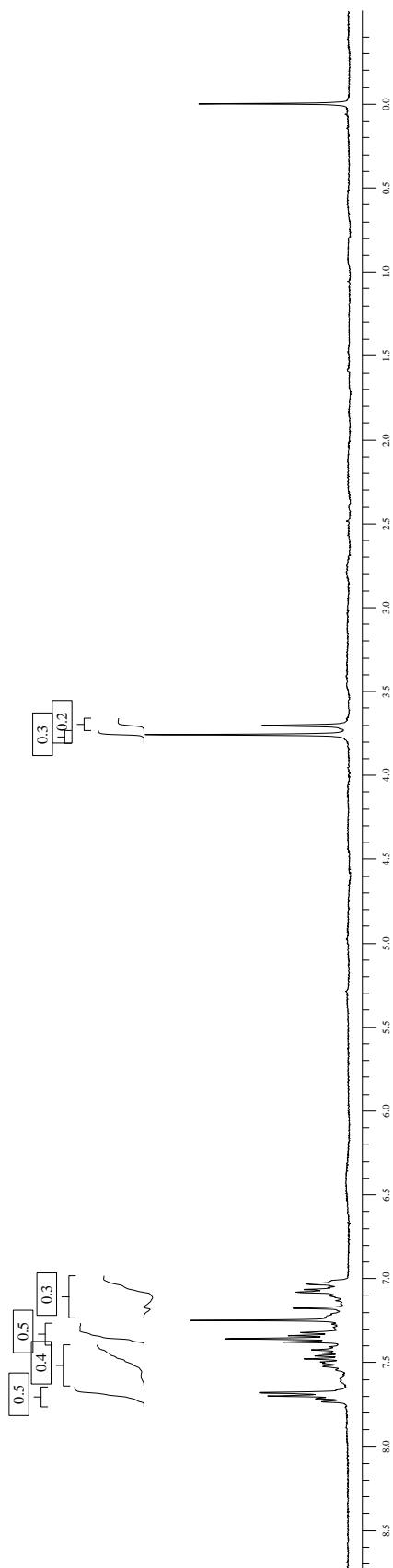
3b

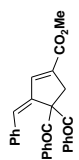




3c

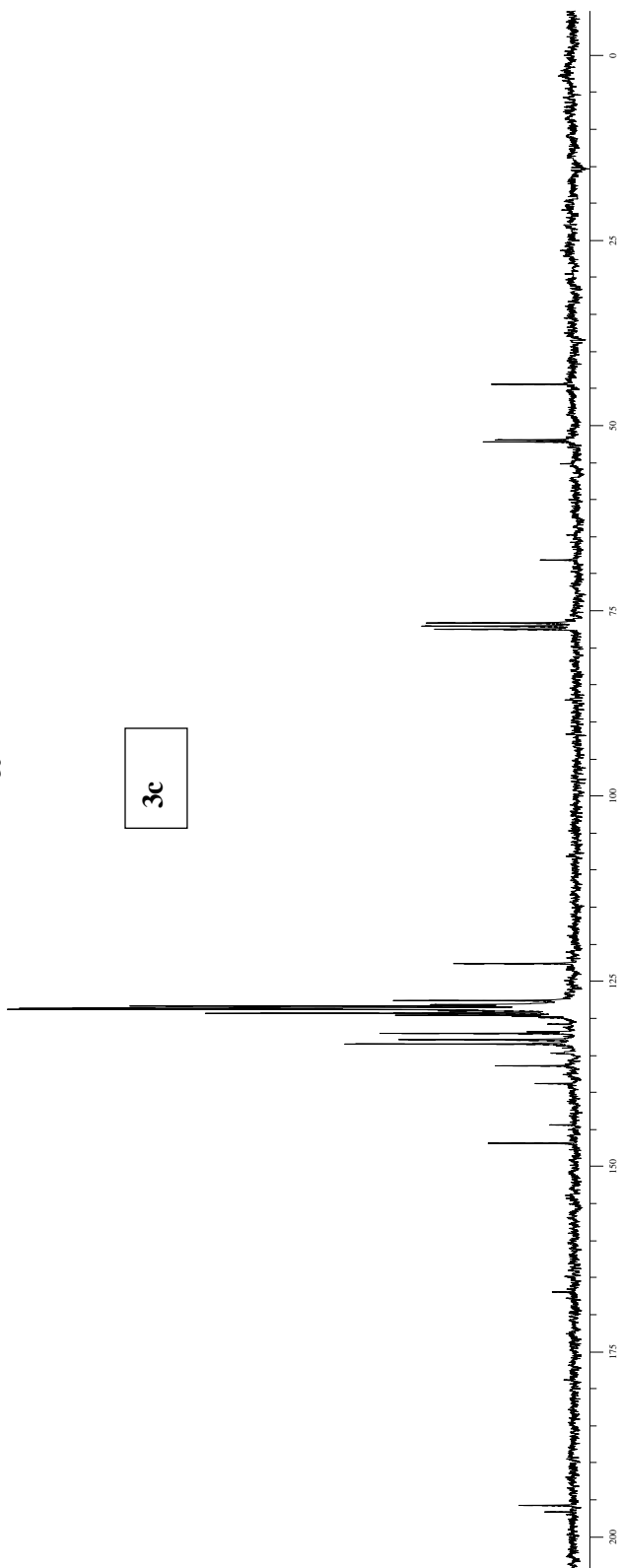
3c

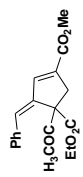




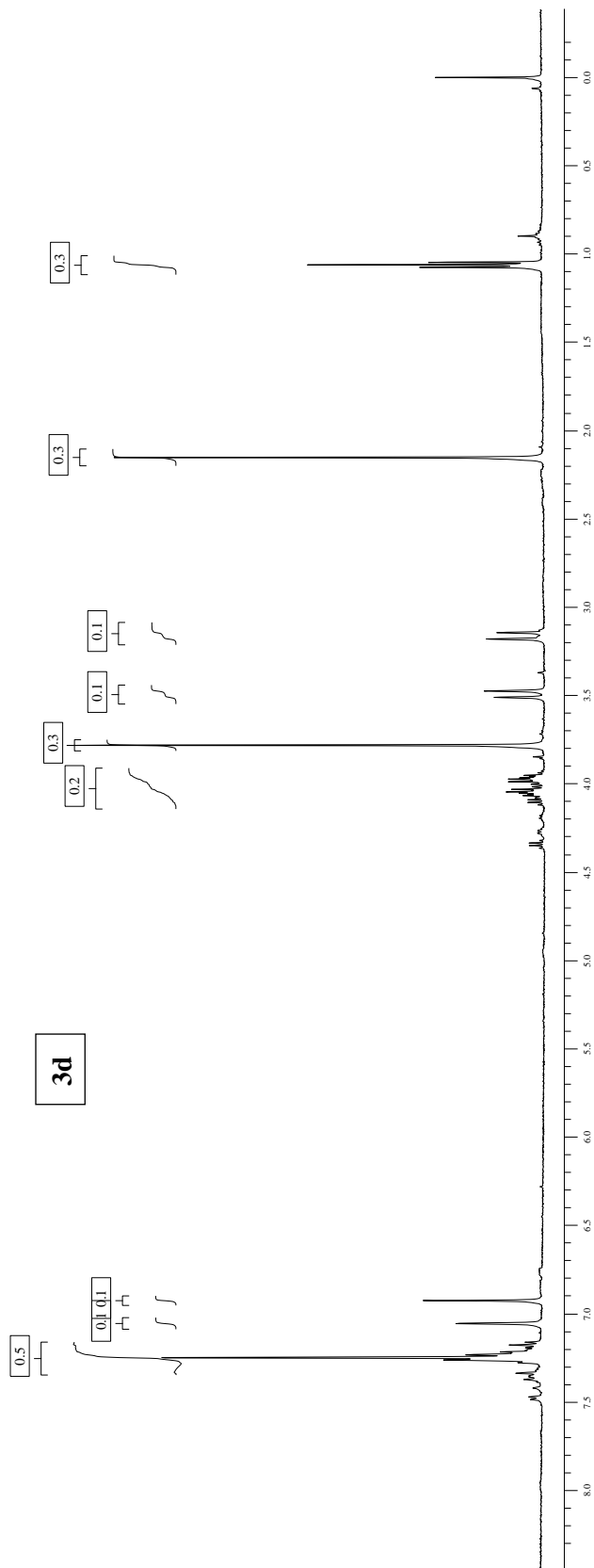
3c

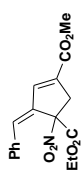
3c



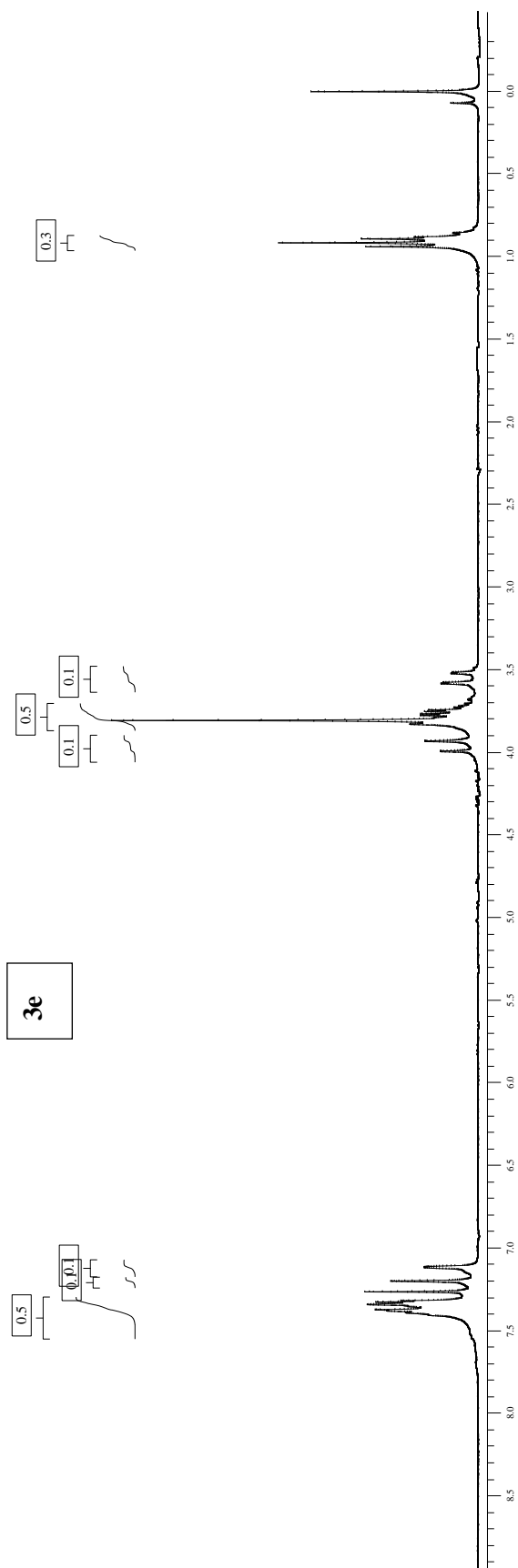


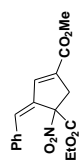
3d





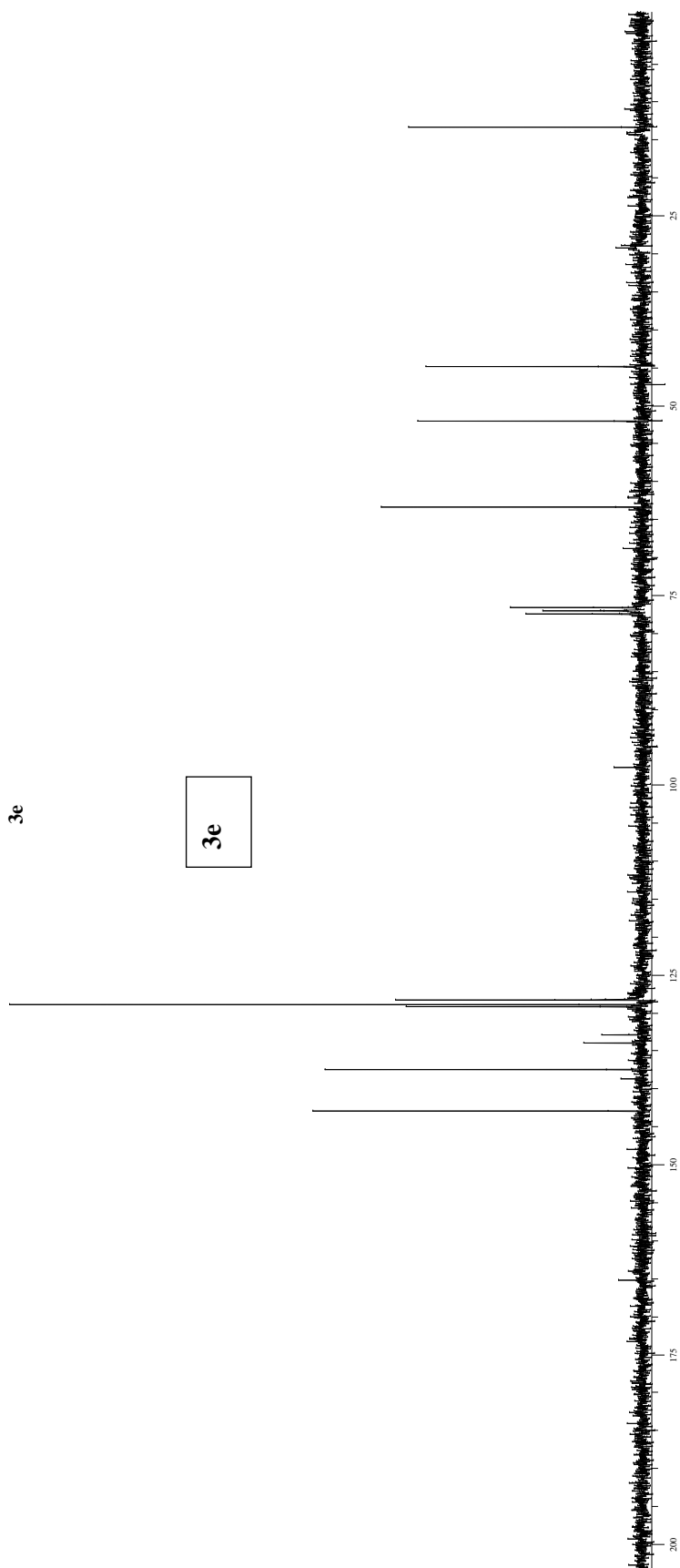
3e

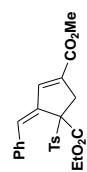




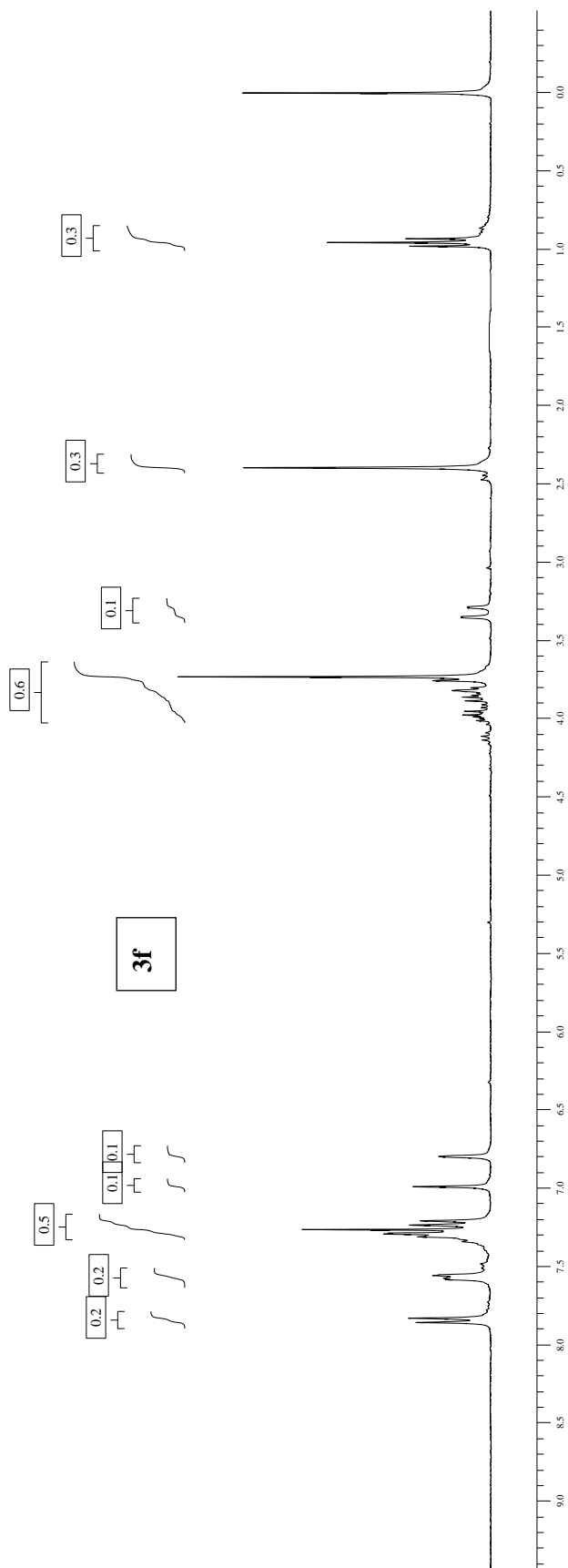
3e

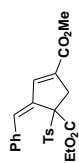
3e





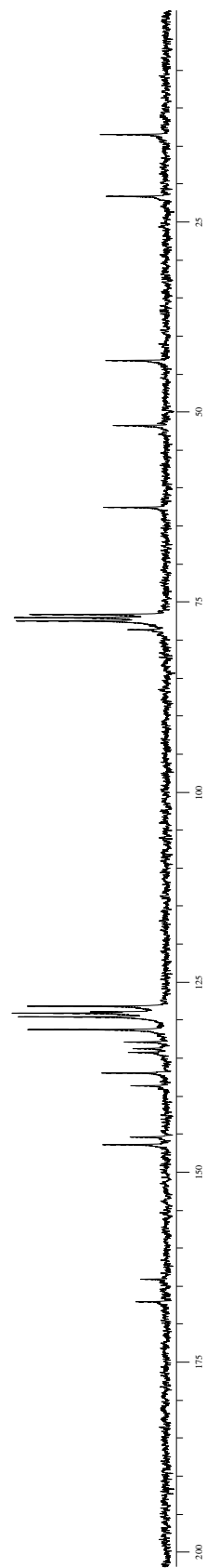
3f

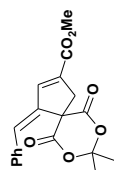




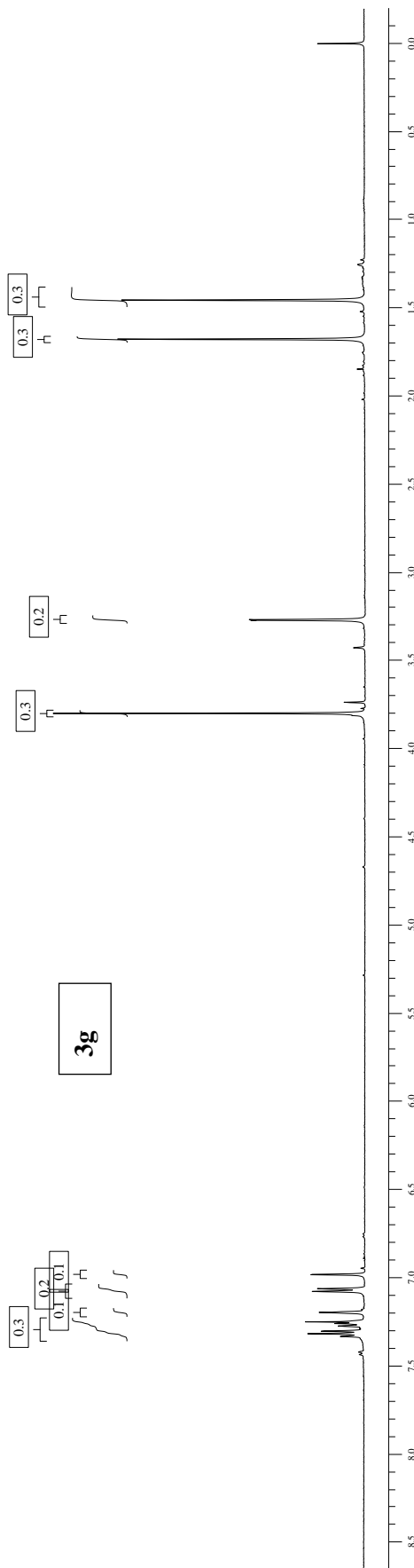
3f

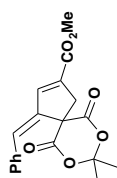
3f





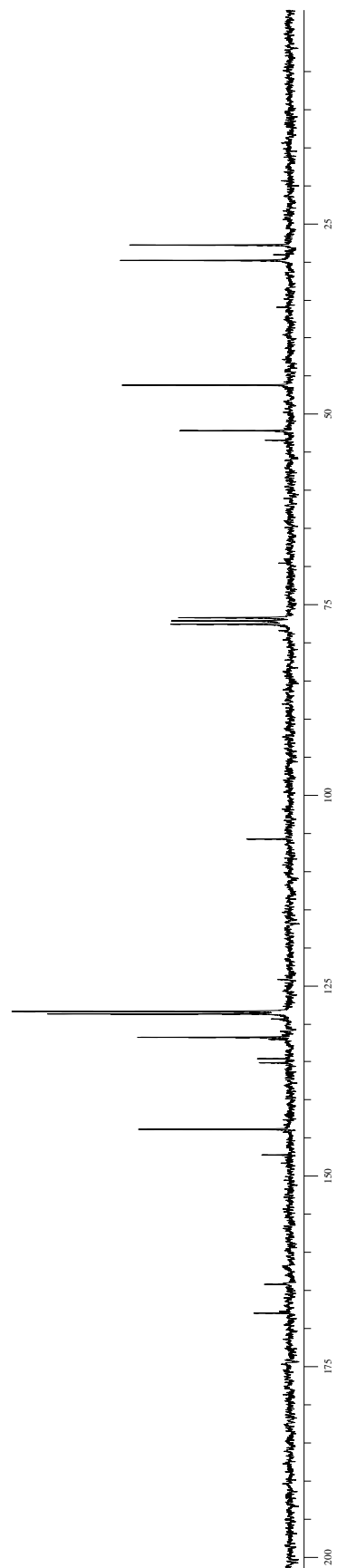
3g

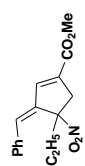




3 g

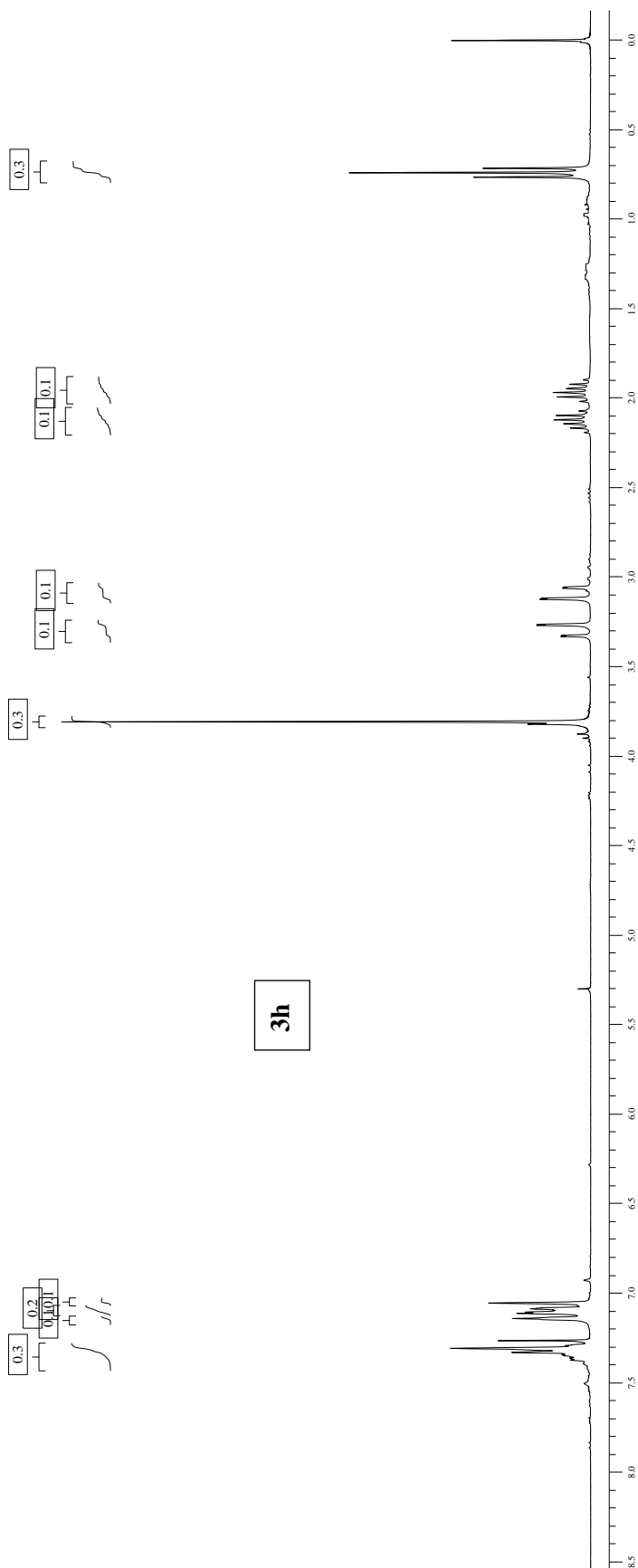
3 g

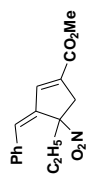




3h

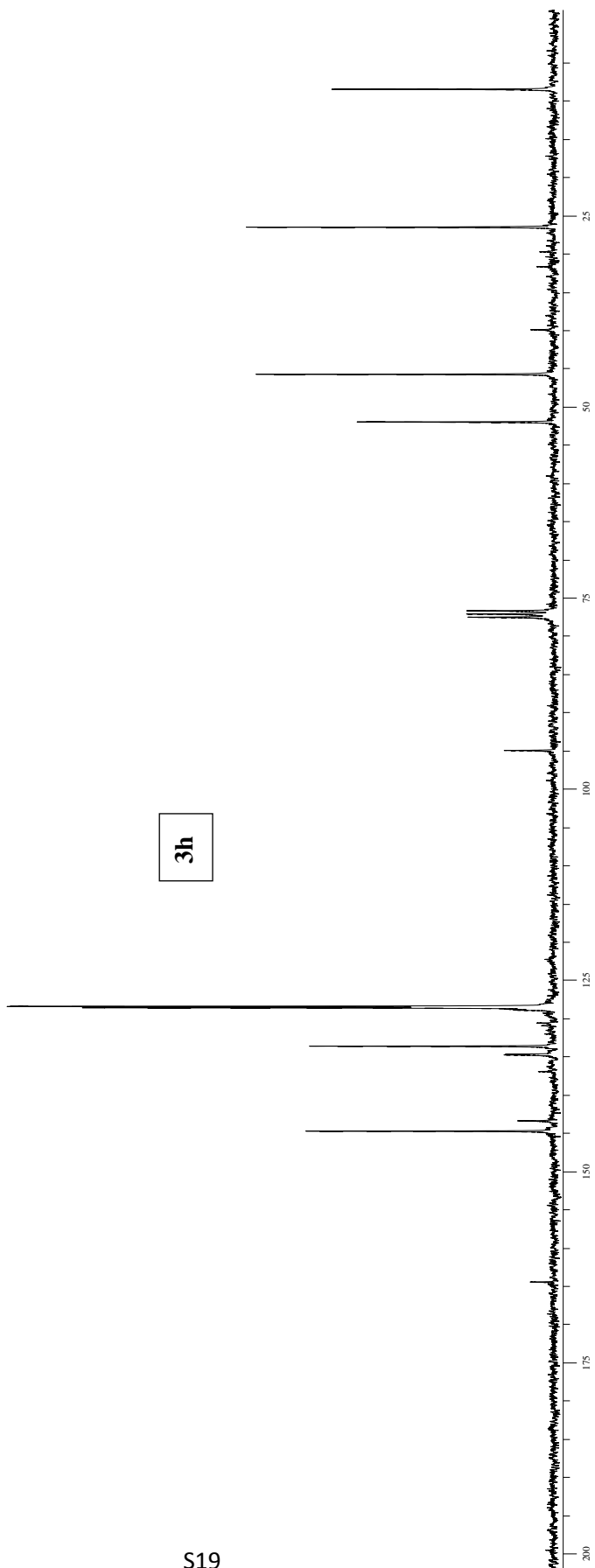
3h

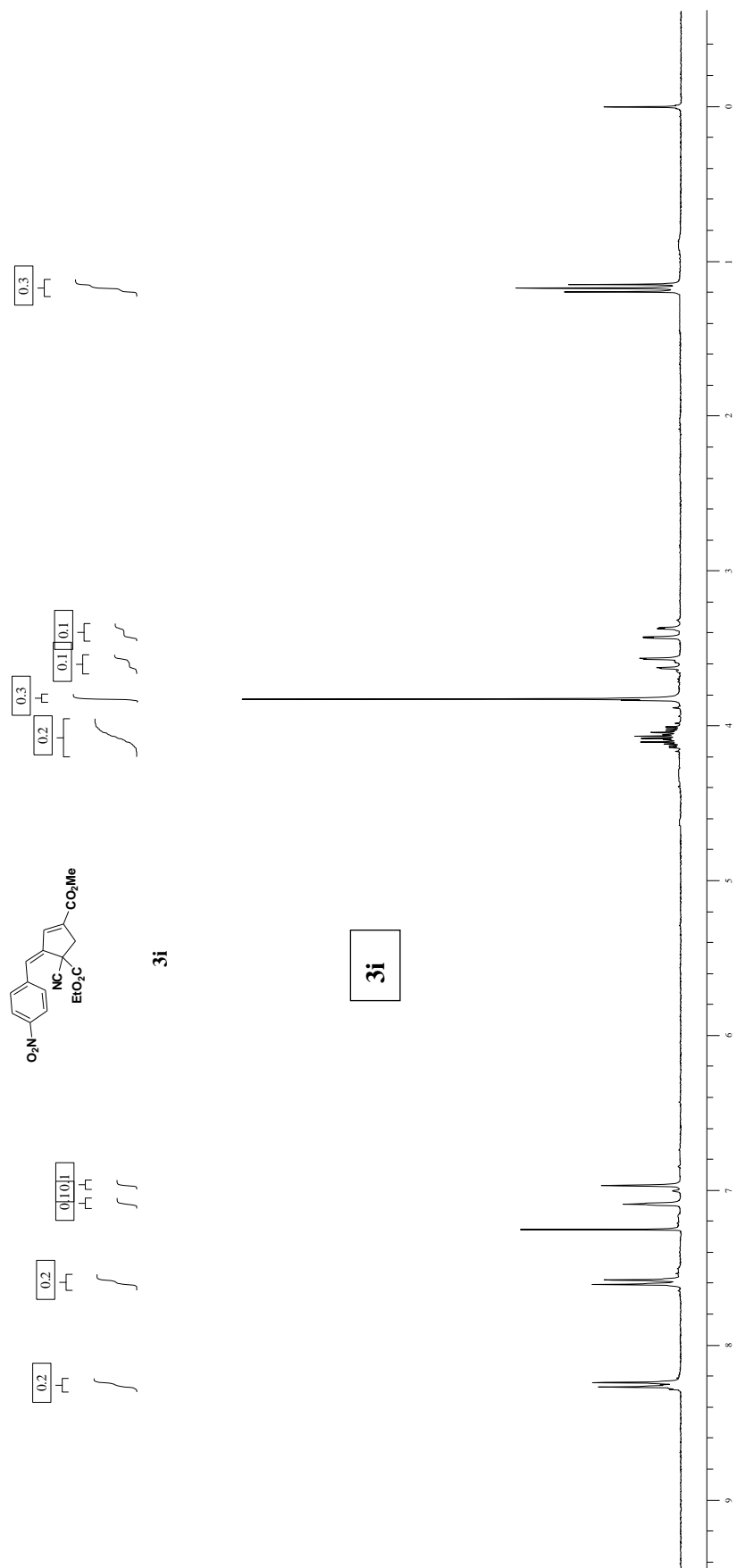


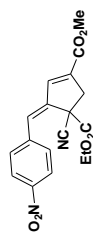


3h

3h

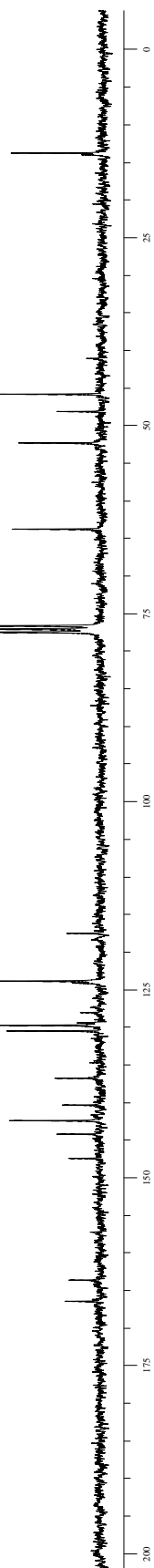


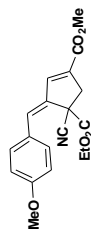




3i

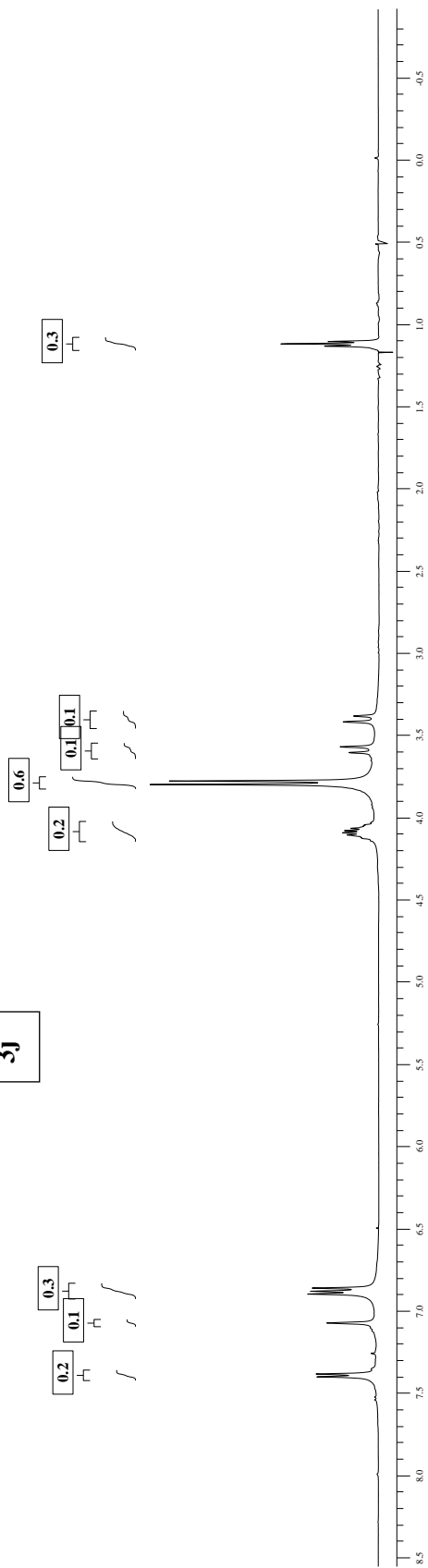
3i

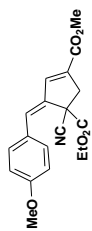




3j

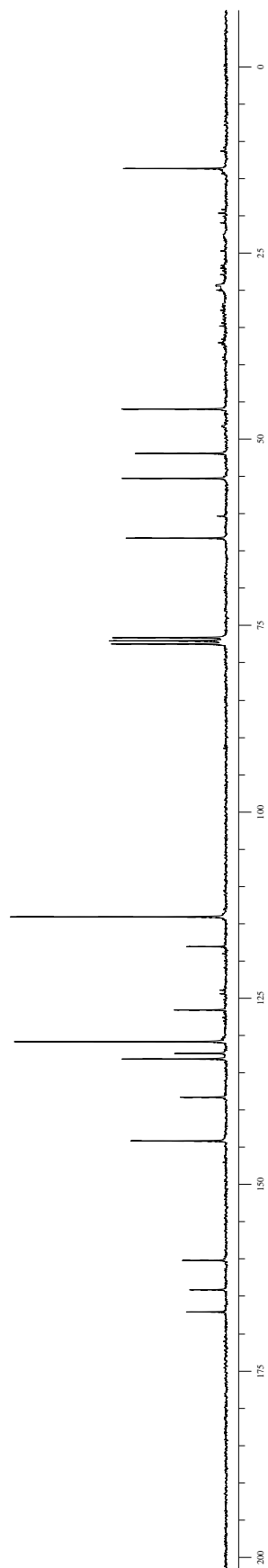
3j

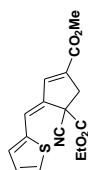




3i

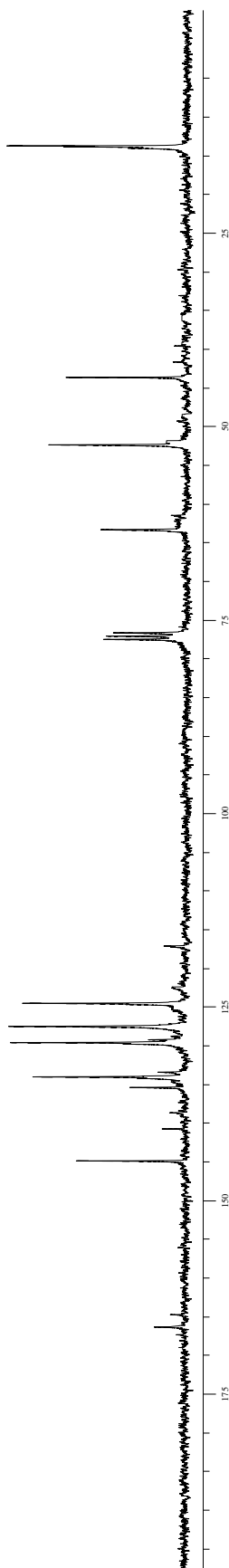
3j

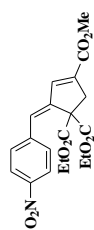




3k

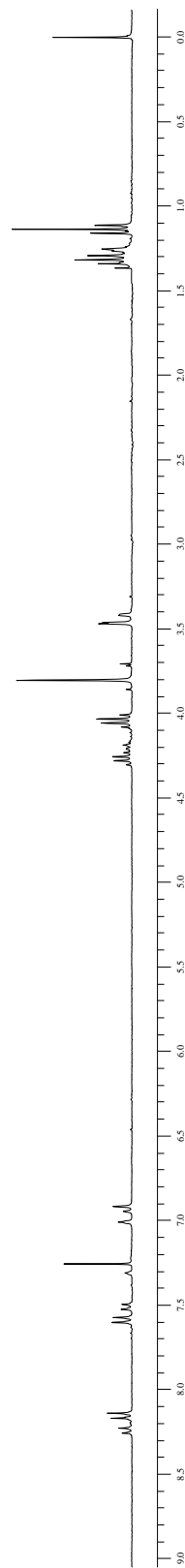
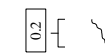
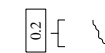
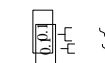
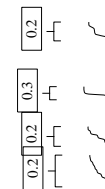
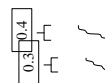
3k

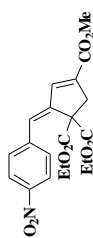




31

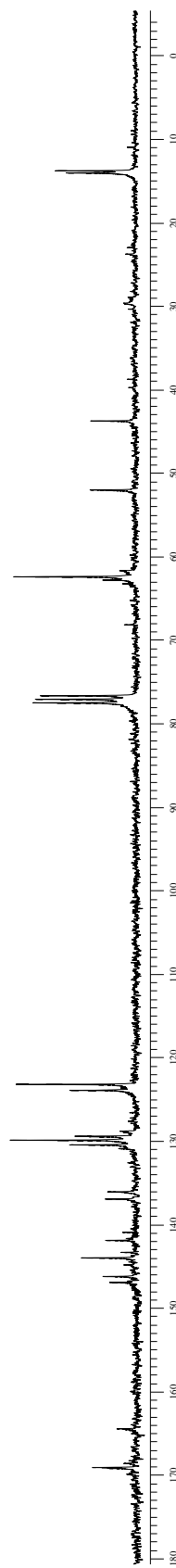
31

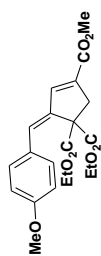




3I

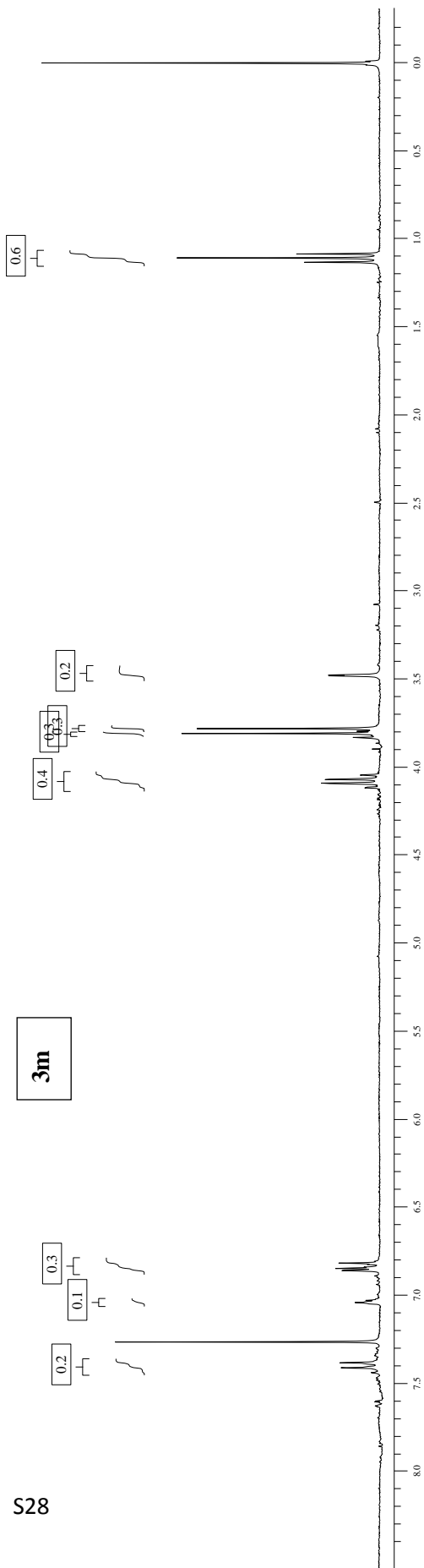
3I

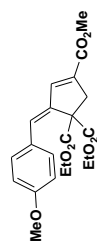




3m

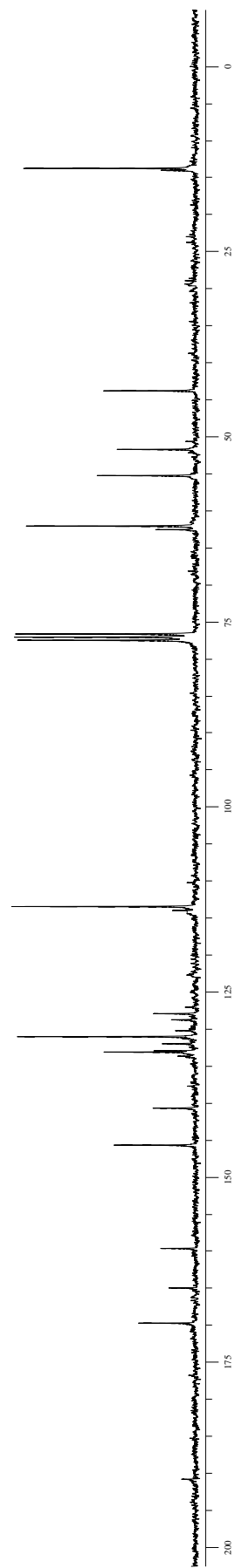
S28

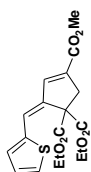




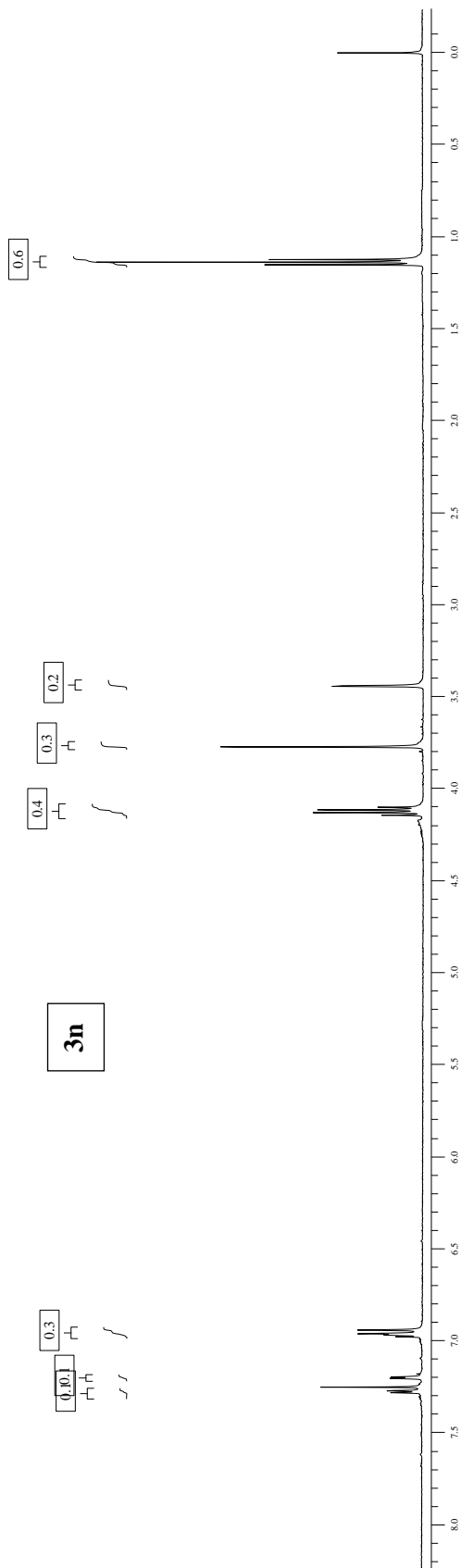
3m

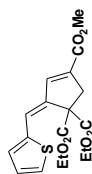
3m





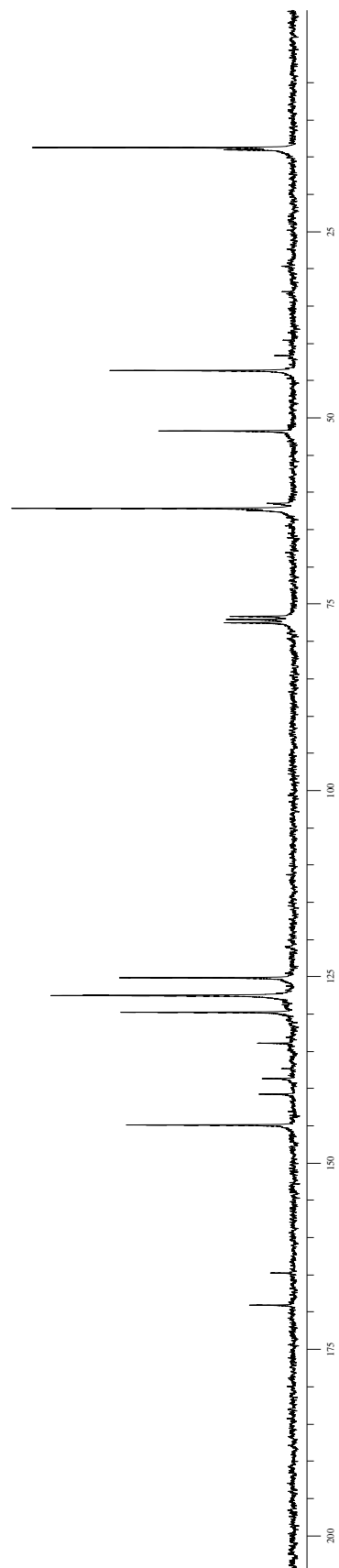
3p

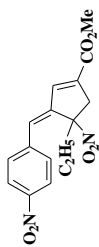




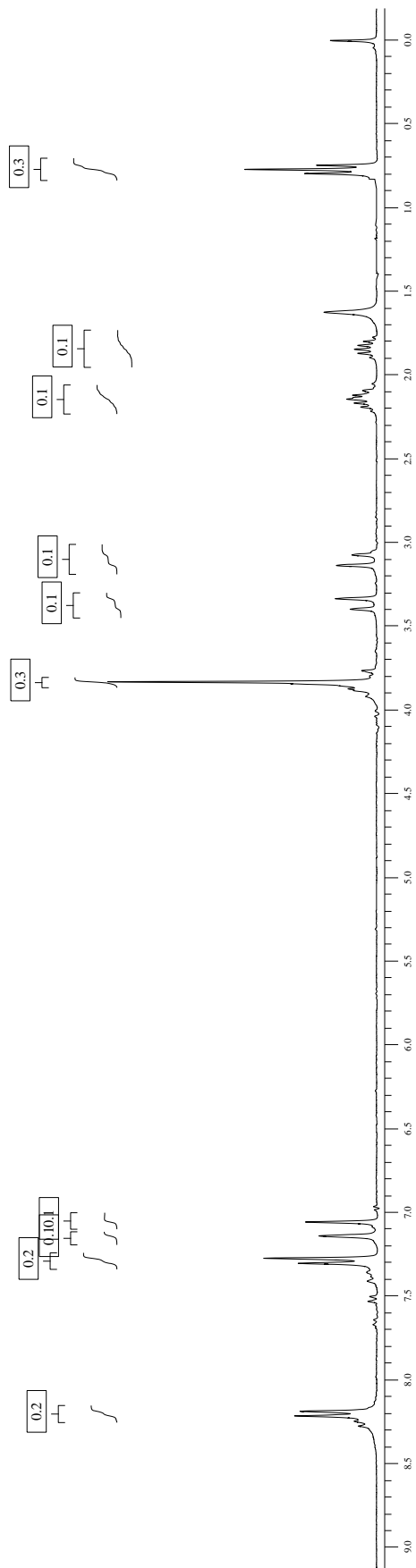
3p

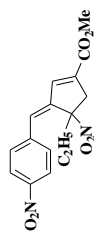
3n



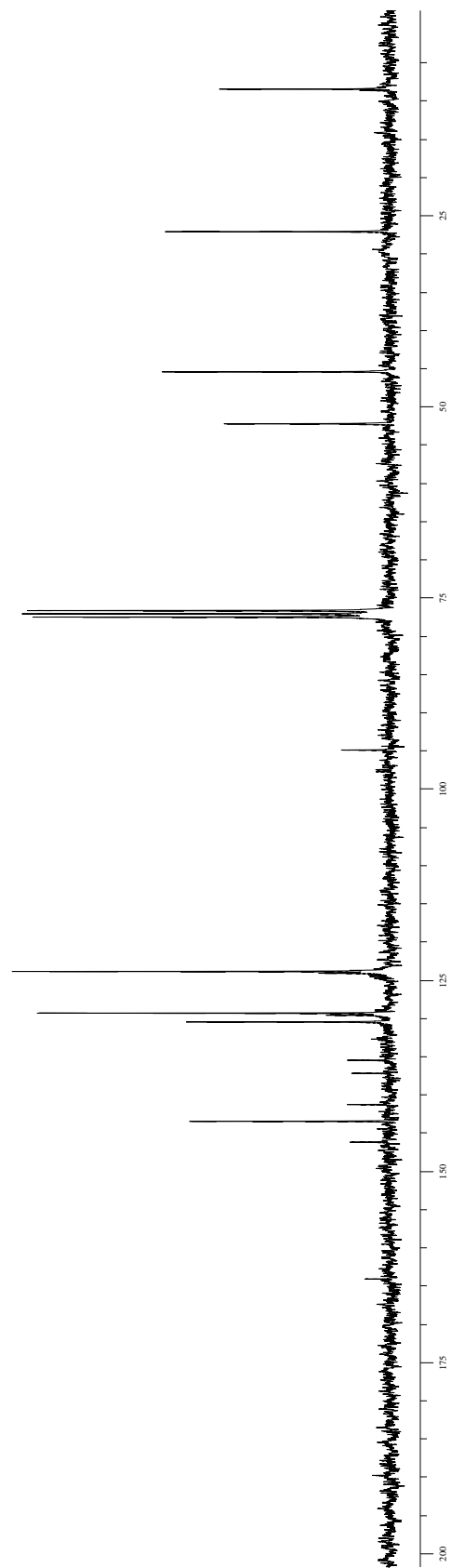


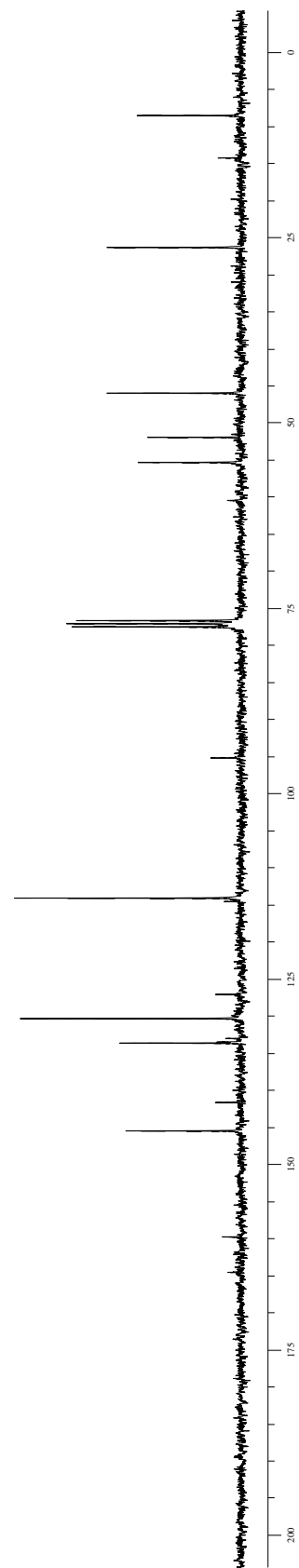
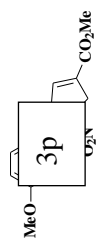
30

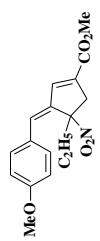




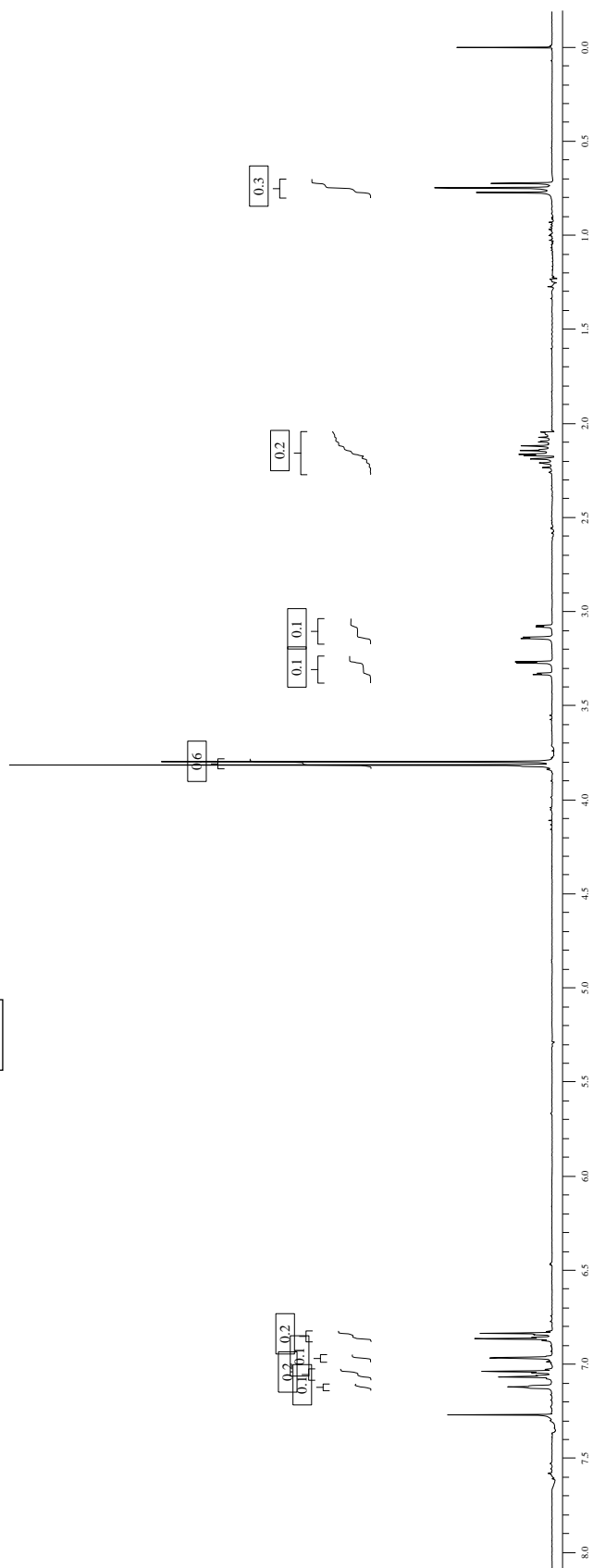
30

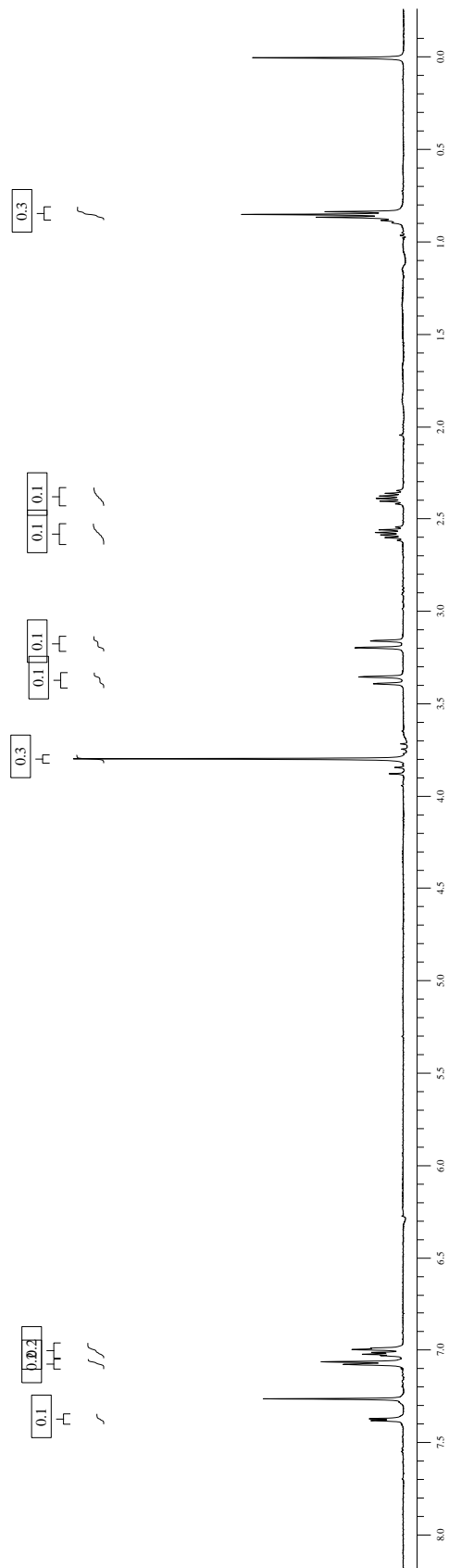
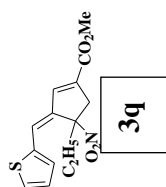


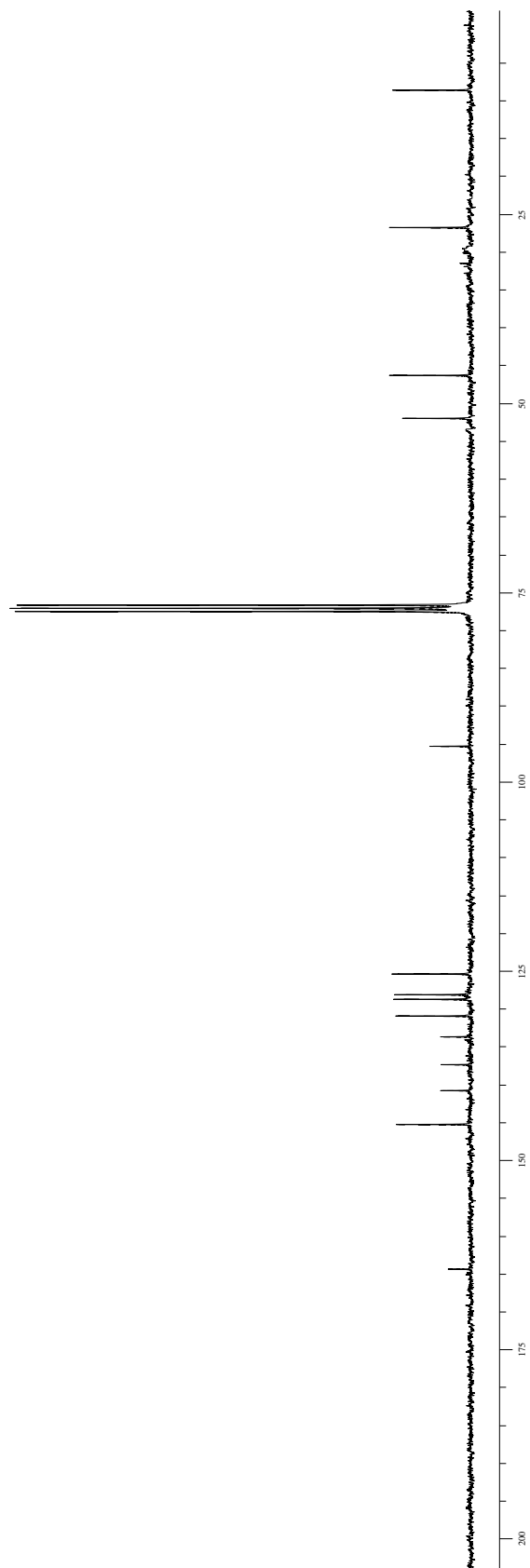
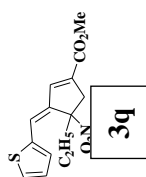


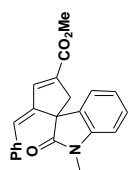


3p



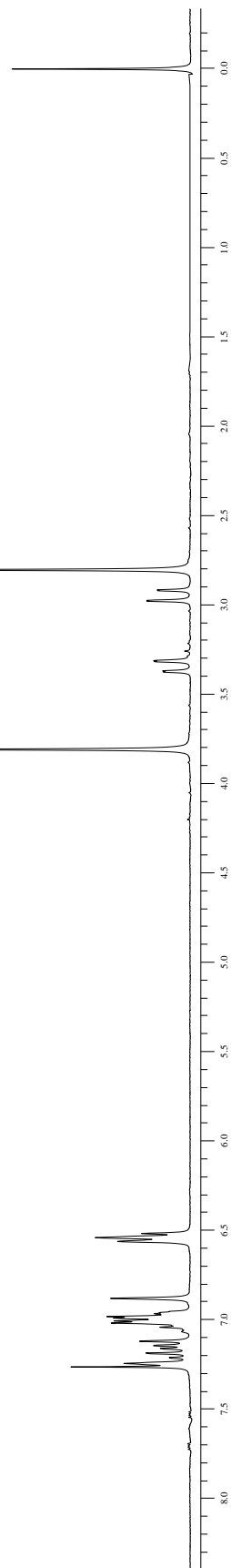
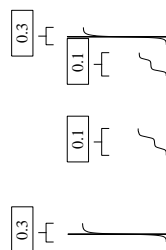
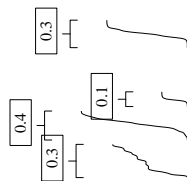


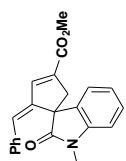




3r

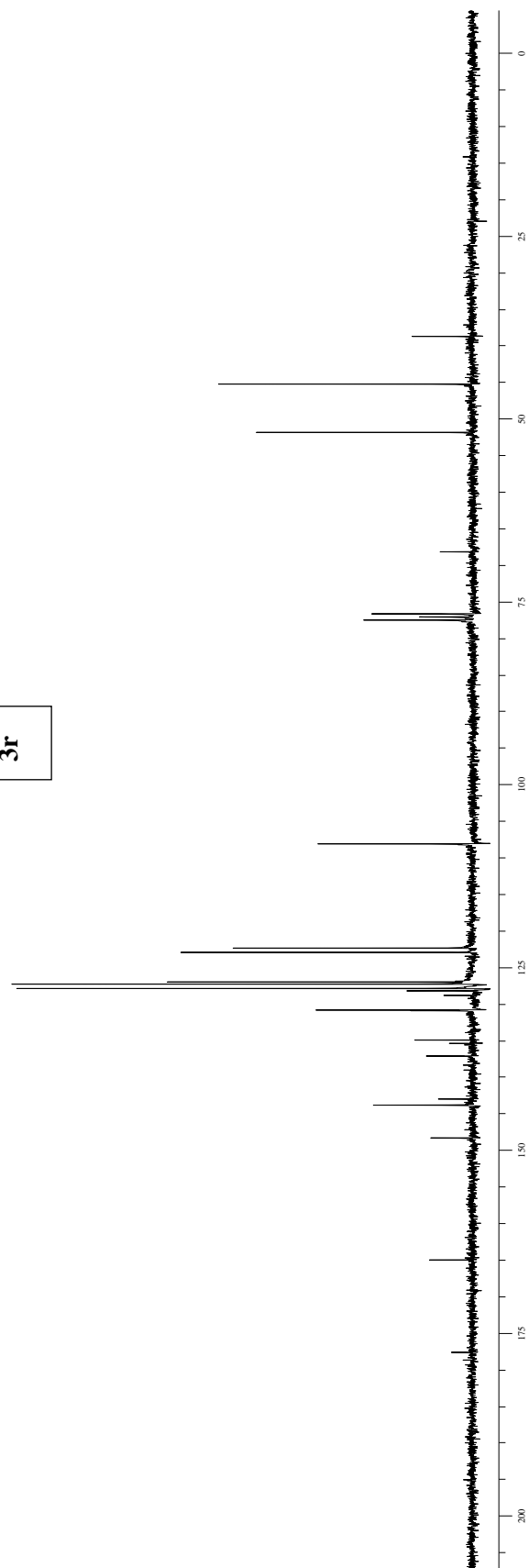
3r

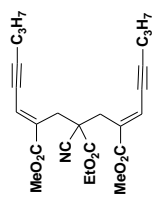




3r

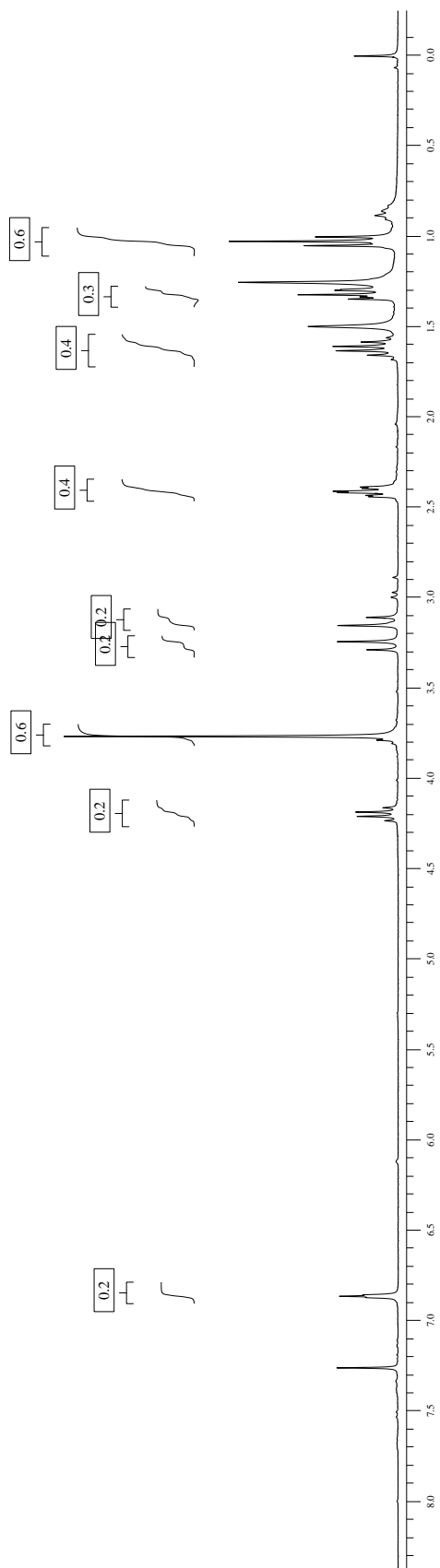
3r

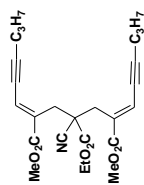




4a

4a





4a

