

Supporting Information

Evidence of Cation-Coordination Involvement in Directing the Regioselective Di-Inversion Reaction of Vicinal Di-Sulfonate Esters

Rachel Hevey and Chang-Chun Ling*

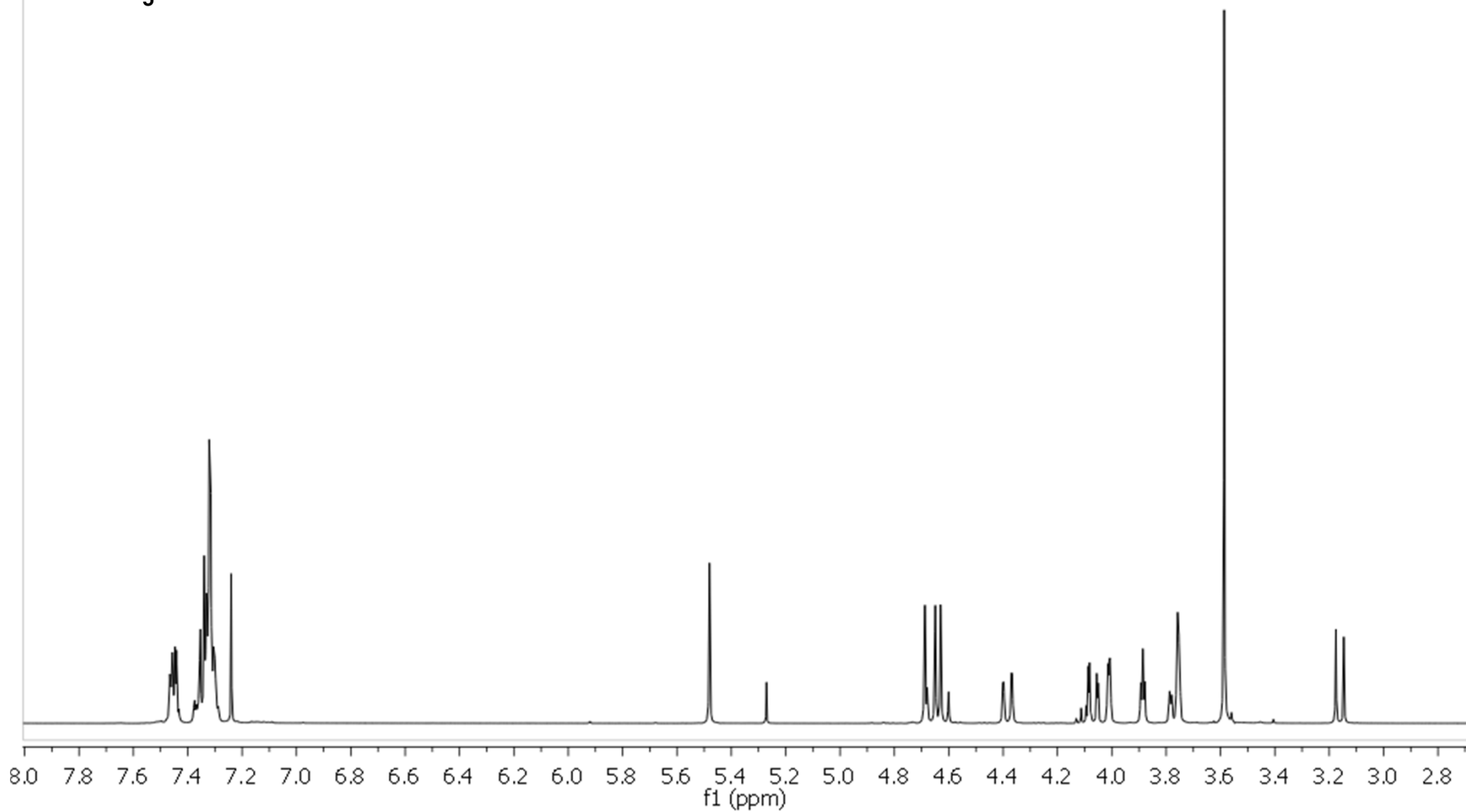
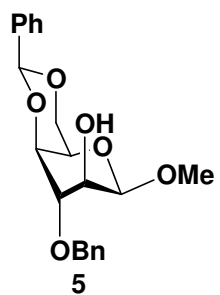
Alberta Glycomics Centre and Department of Chemistry, University of Calgary,
2500 University Drive NW, Calgary, Alberta T2N 1N4 Canada

E-mail: *ccling@ucalgary.ca*

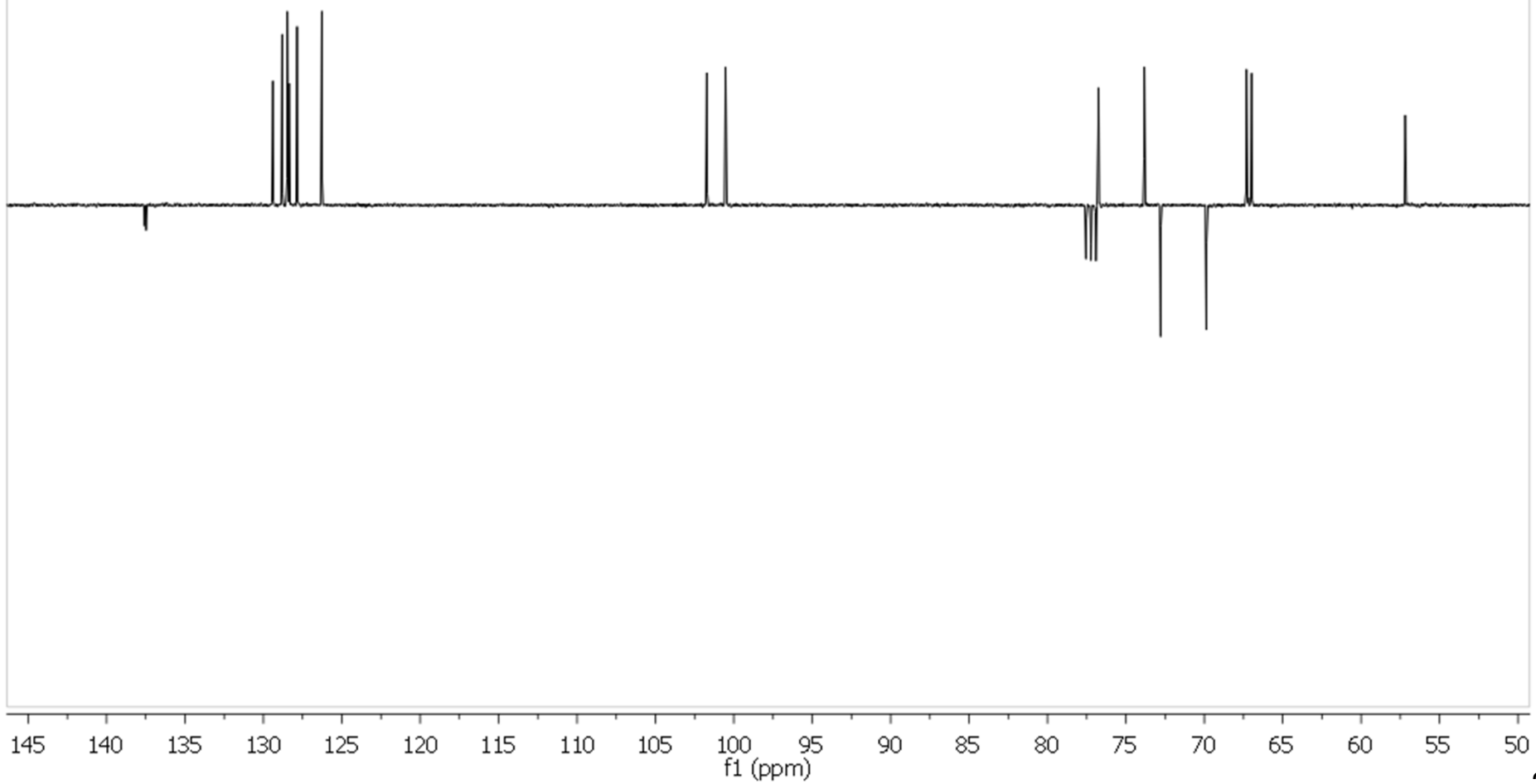
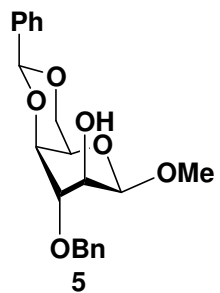
Table of Contents

NMR Spectra of compound 5	2
NMR Spectra of compound 13	5
NMR Spectra of compound 6	7
NMR Spectra of compound 7	10
NMR Spectra illustrating LiOMe reaction progression.....	13
NMR Spectra illustrating NaOMe reaction progression.....	14
NMR Spectra illustrating KOMe reaction progression.....	15
NMR Spectra of compound 16	16
NMR Spectra of compound 17	19

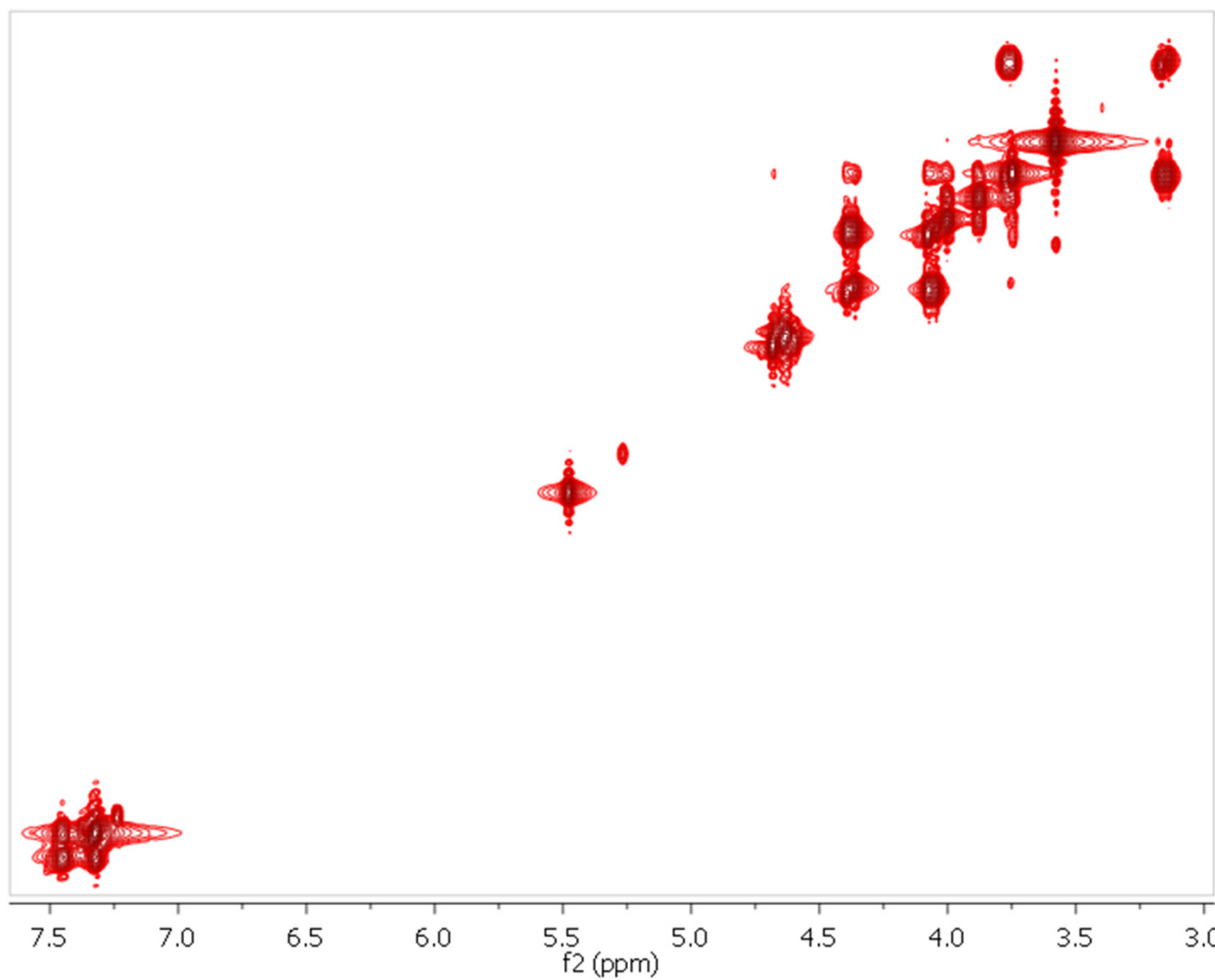
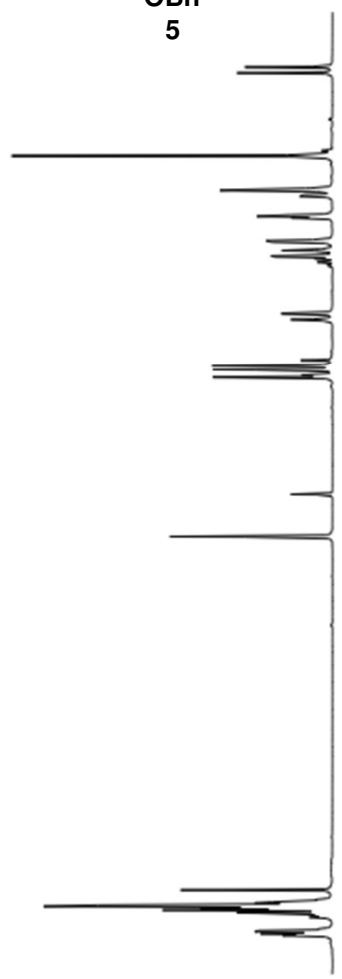
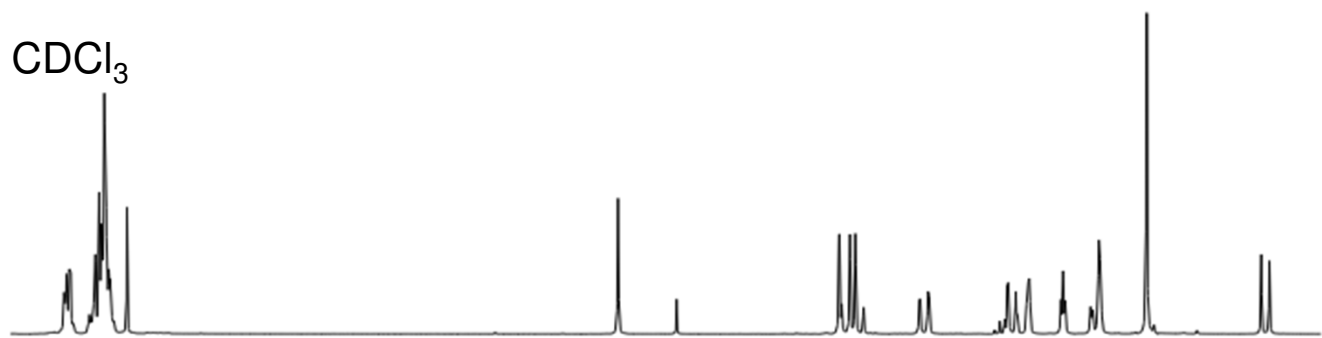
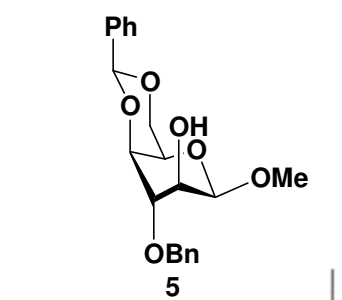
^1H NMR in CDCl_3 (400 MHz)



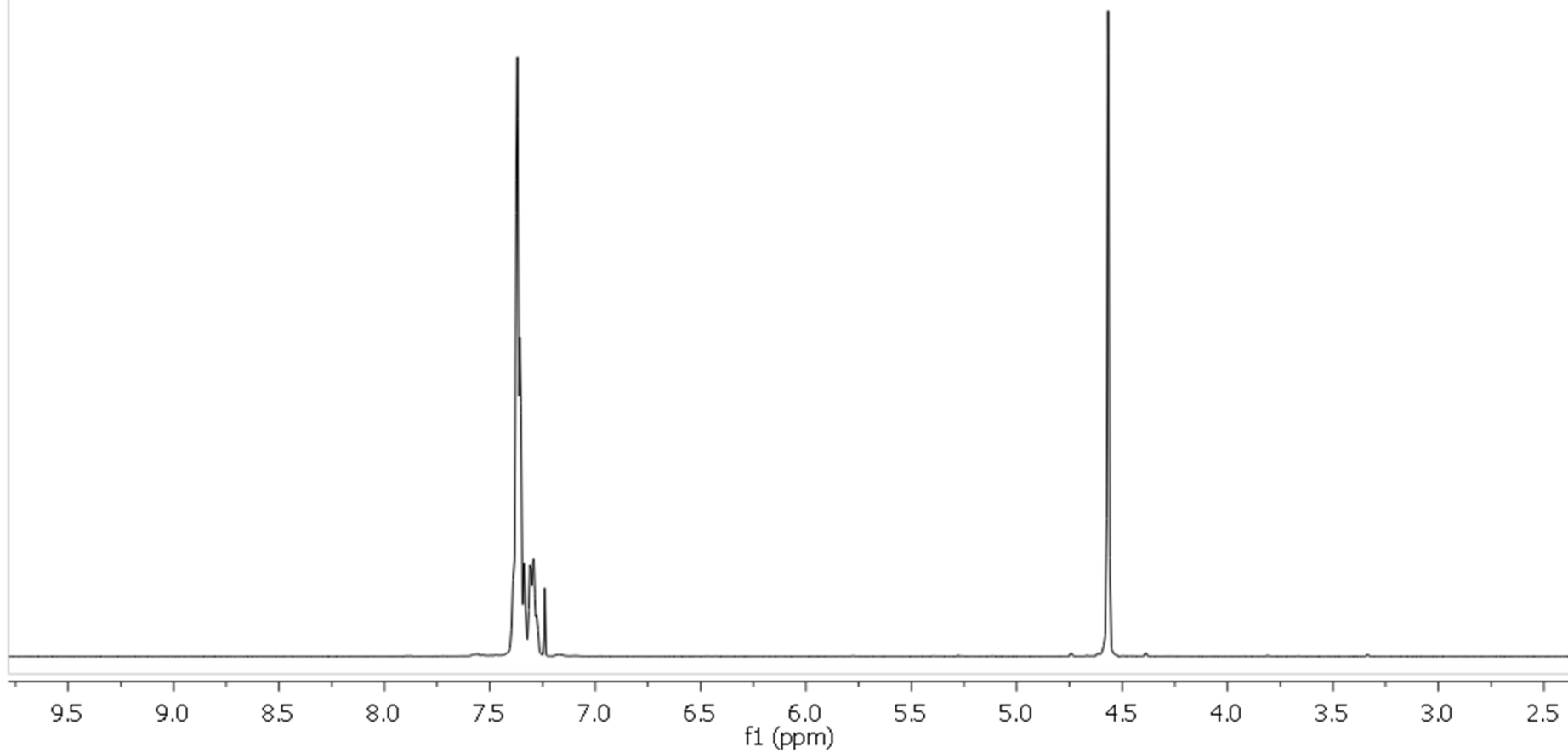
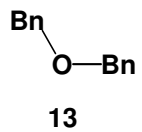
^{13}C NMR (DEPTQ) in CDCl_3 (100 MHz)



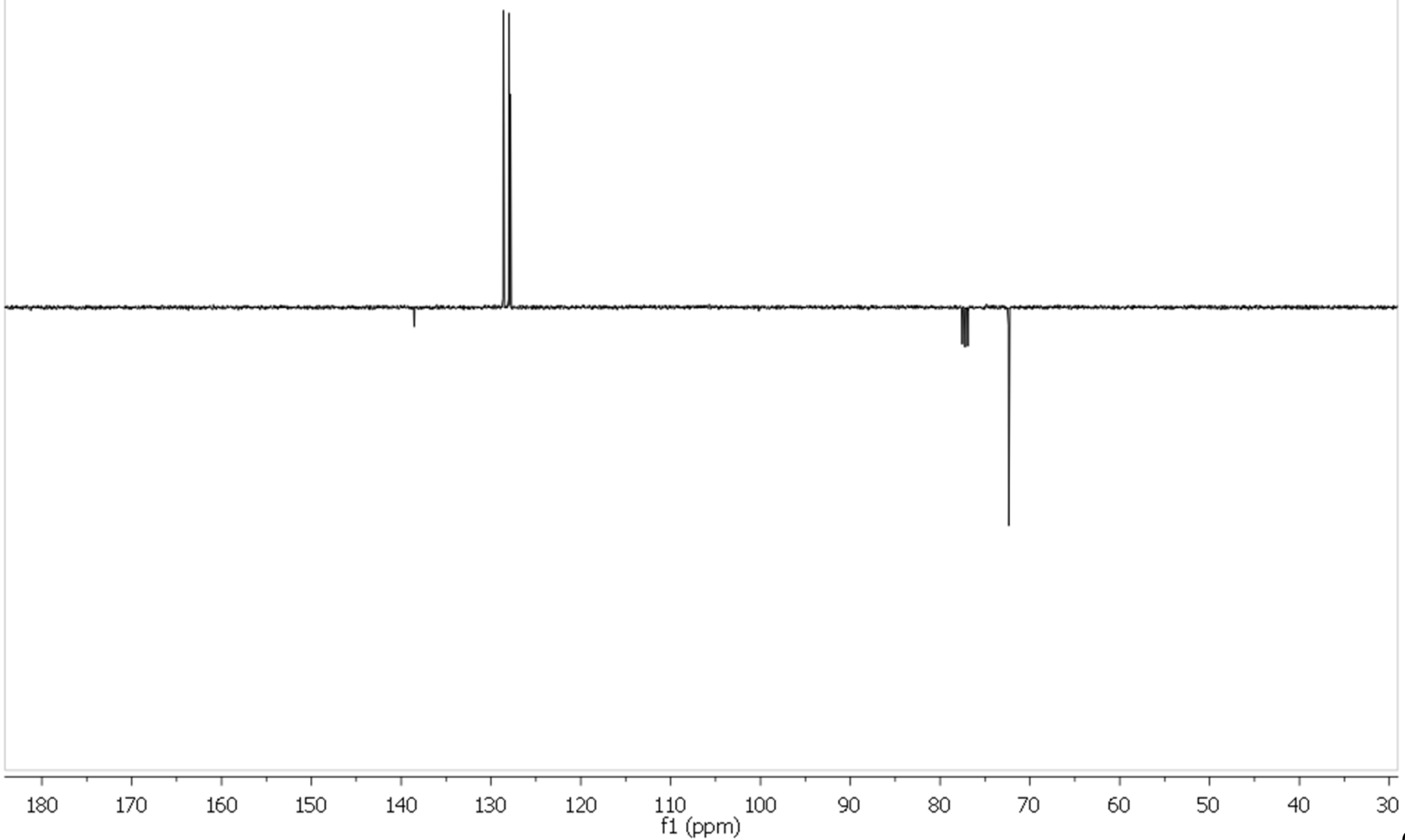
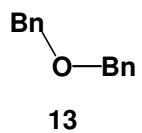
$^1\text{H}_1\text{H}$ GCOSY in CDCl_3



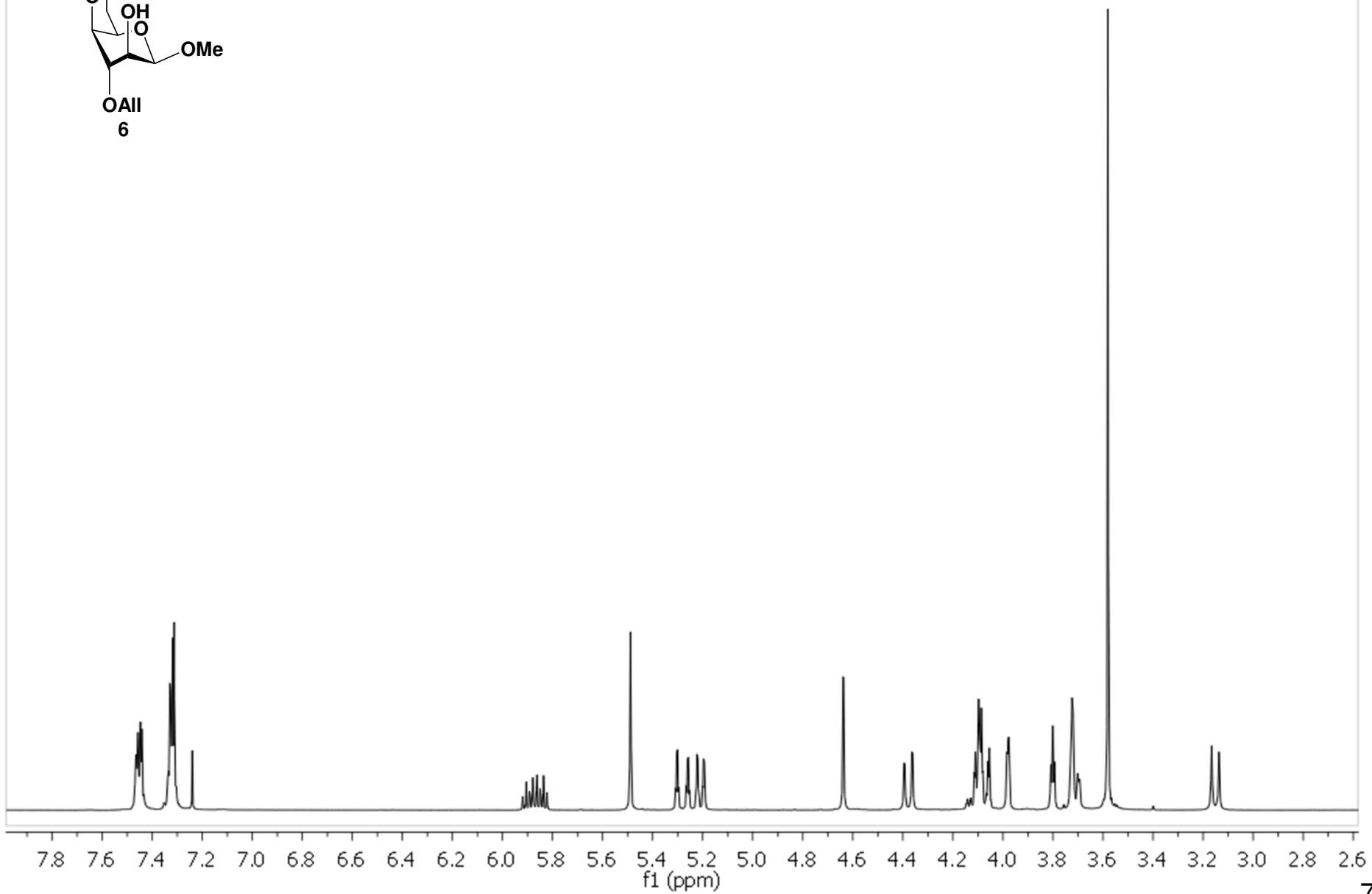
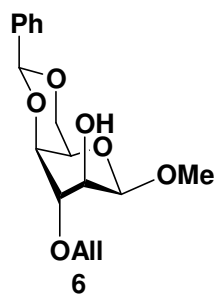
^1H NMR in CDCl_3 (400 MHz)



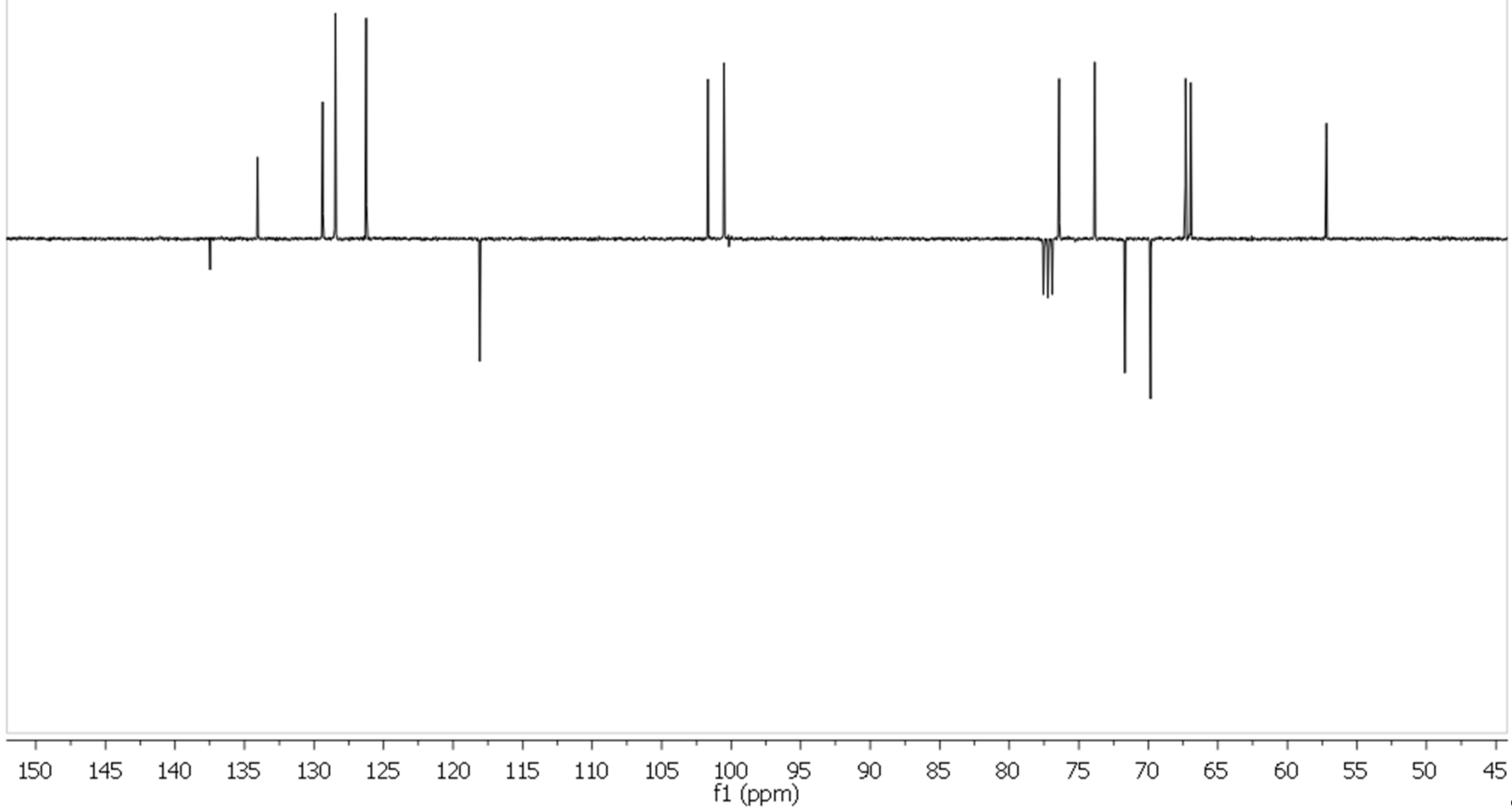
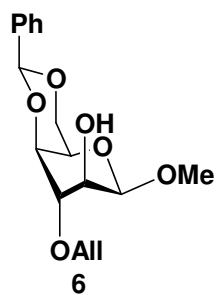
^{13}C NMR (DEPTQ) in CDCl_3 (100 MHz)



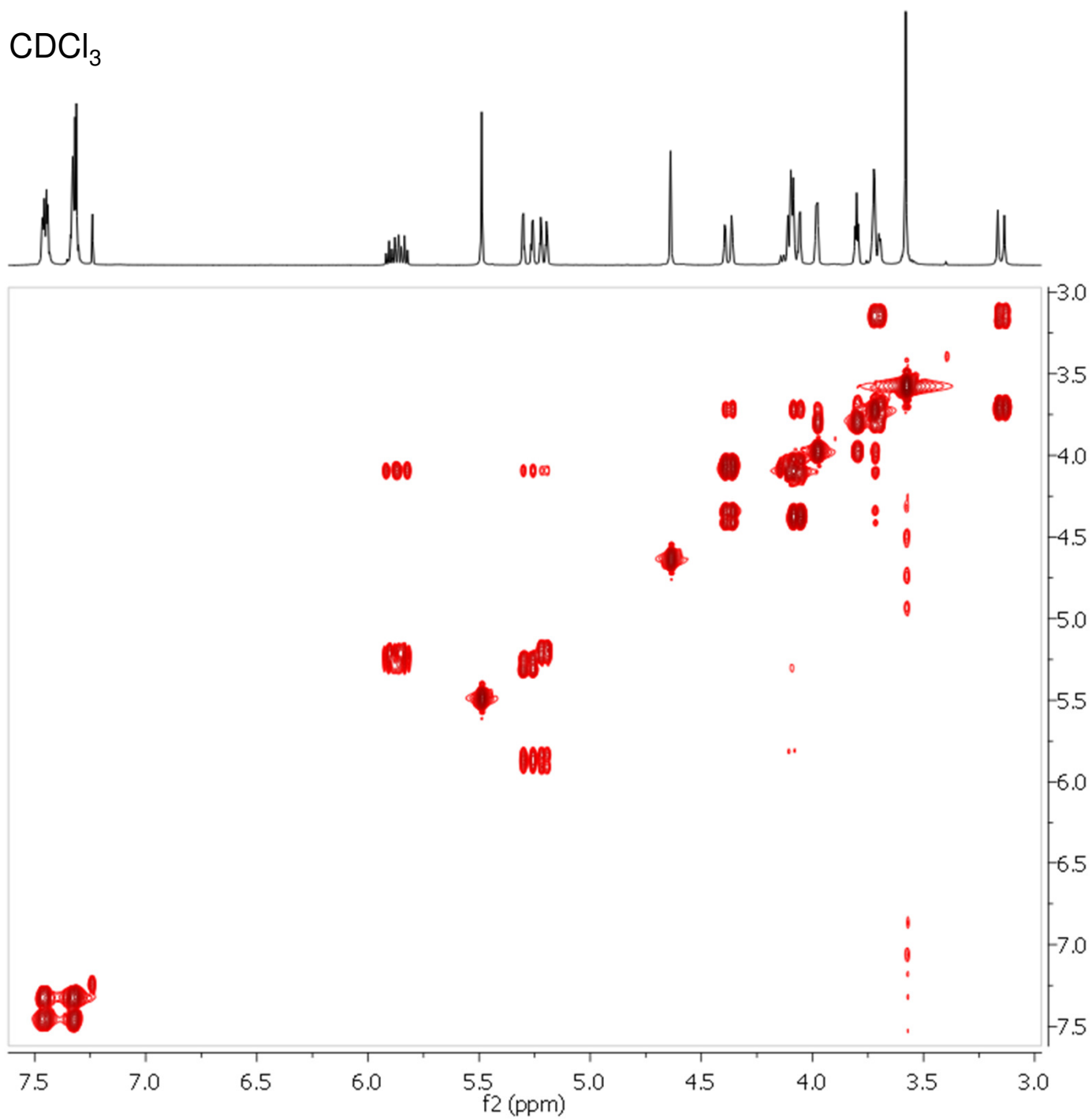
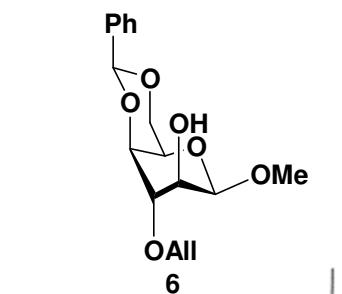
^1H NMR in CDCl_3 (400 MHz)



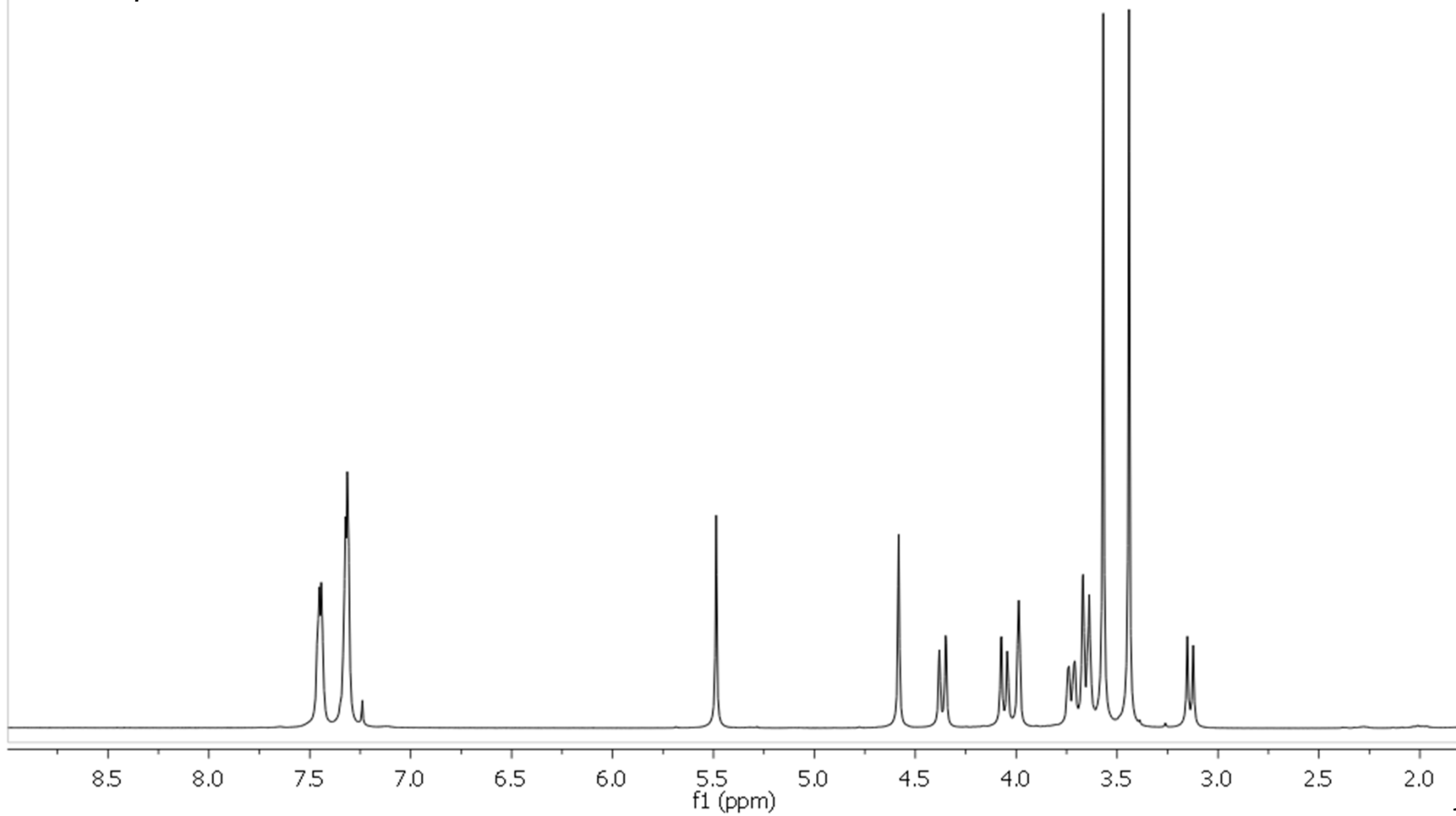
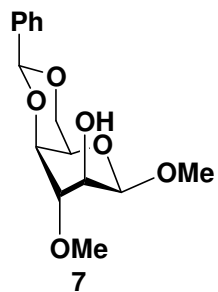
^{13}C NMR (DEPTQ) in CDCl_3 (100 MHz)



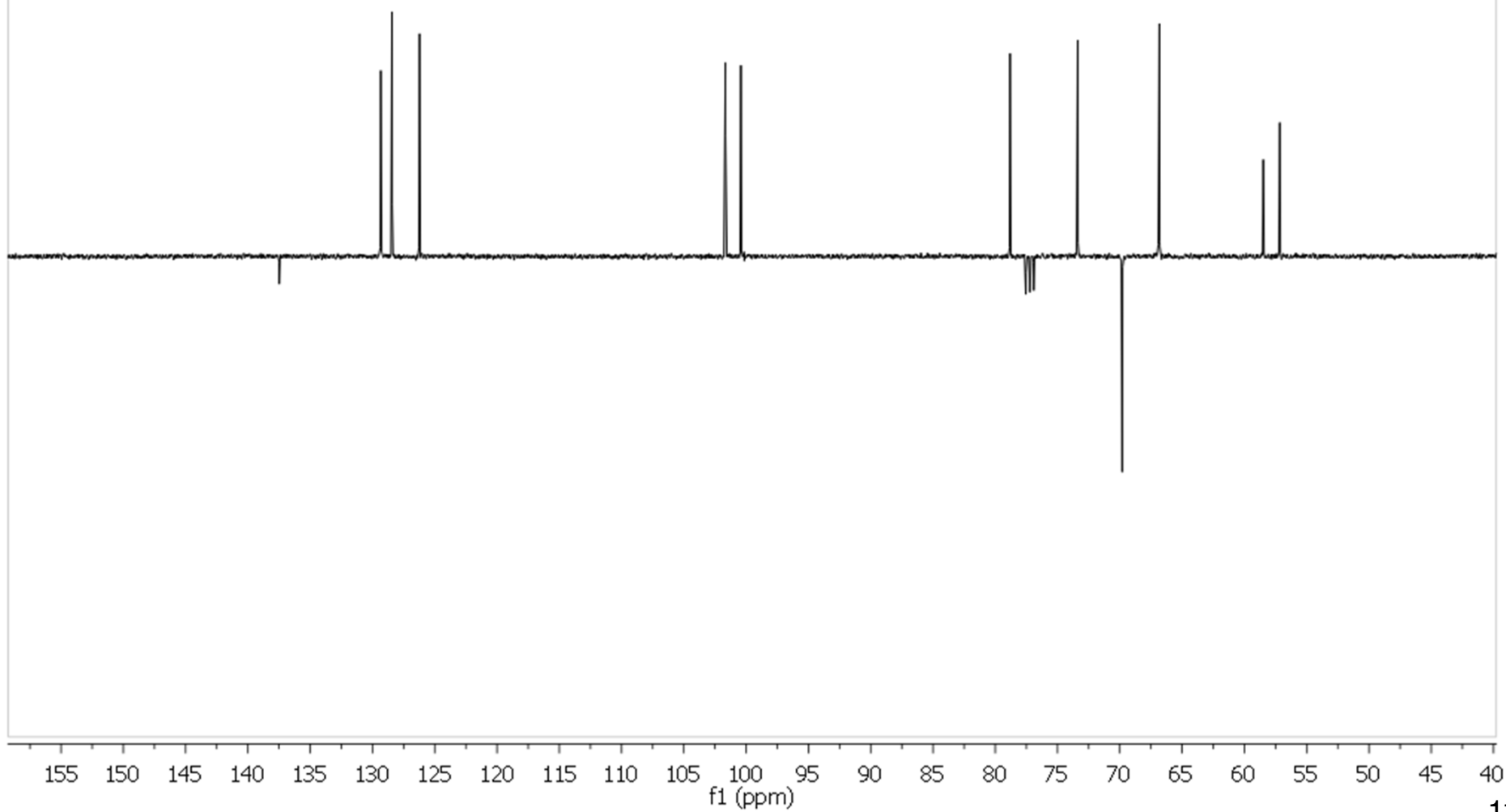
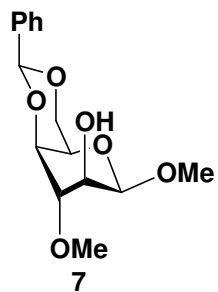
$^1\text{H}_-^1\text{H}$ GCOSY in CDCl_3



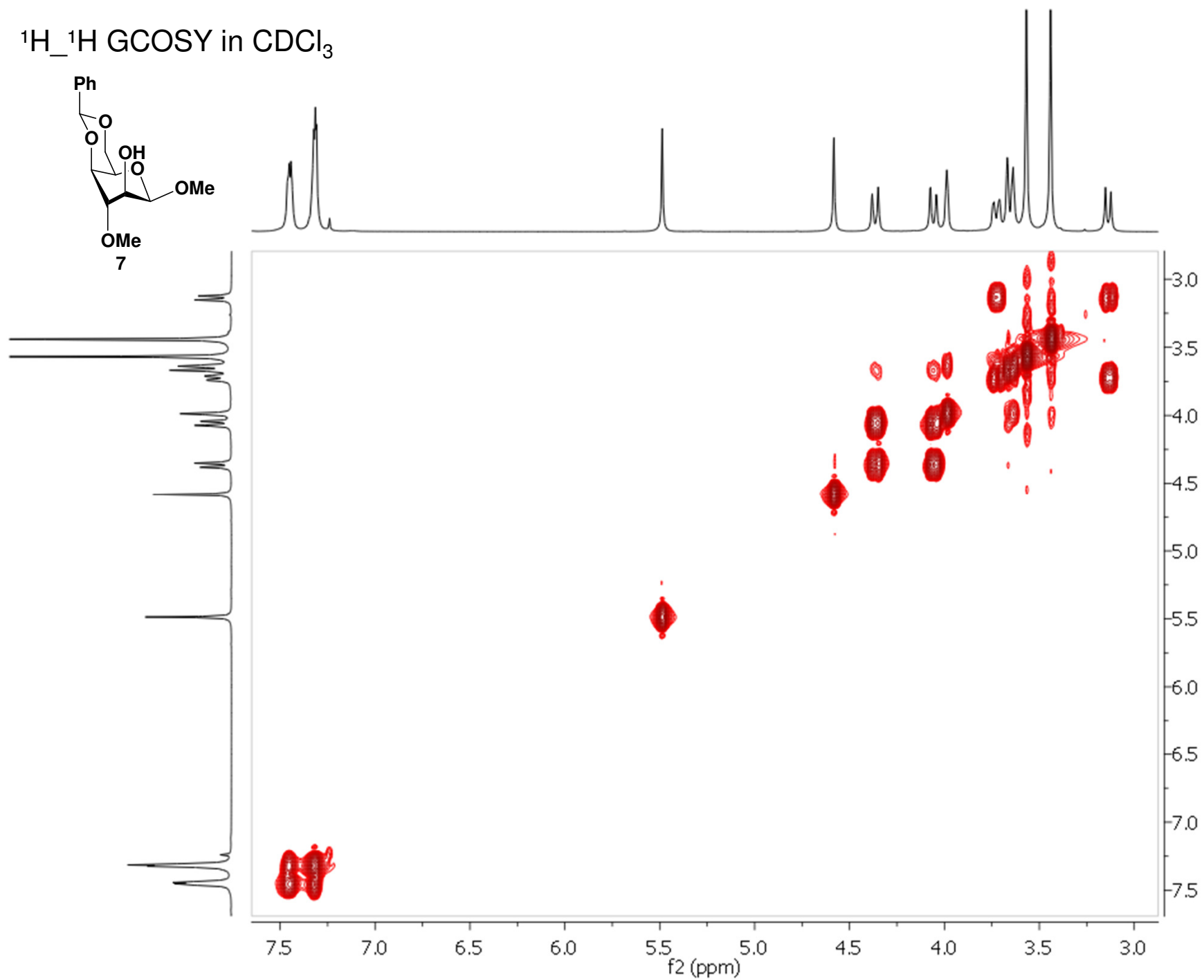
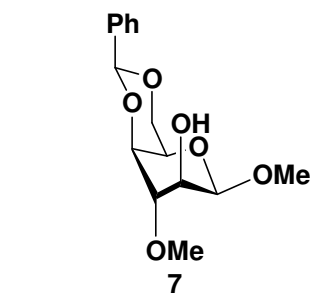
^1H NMR in CDCl_3 (400 MHz)



^{13}C NMR (DEPTQ) in CDCl_3 (100 MHz)

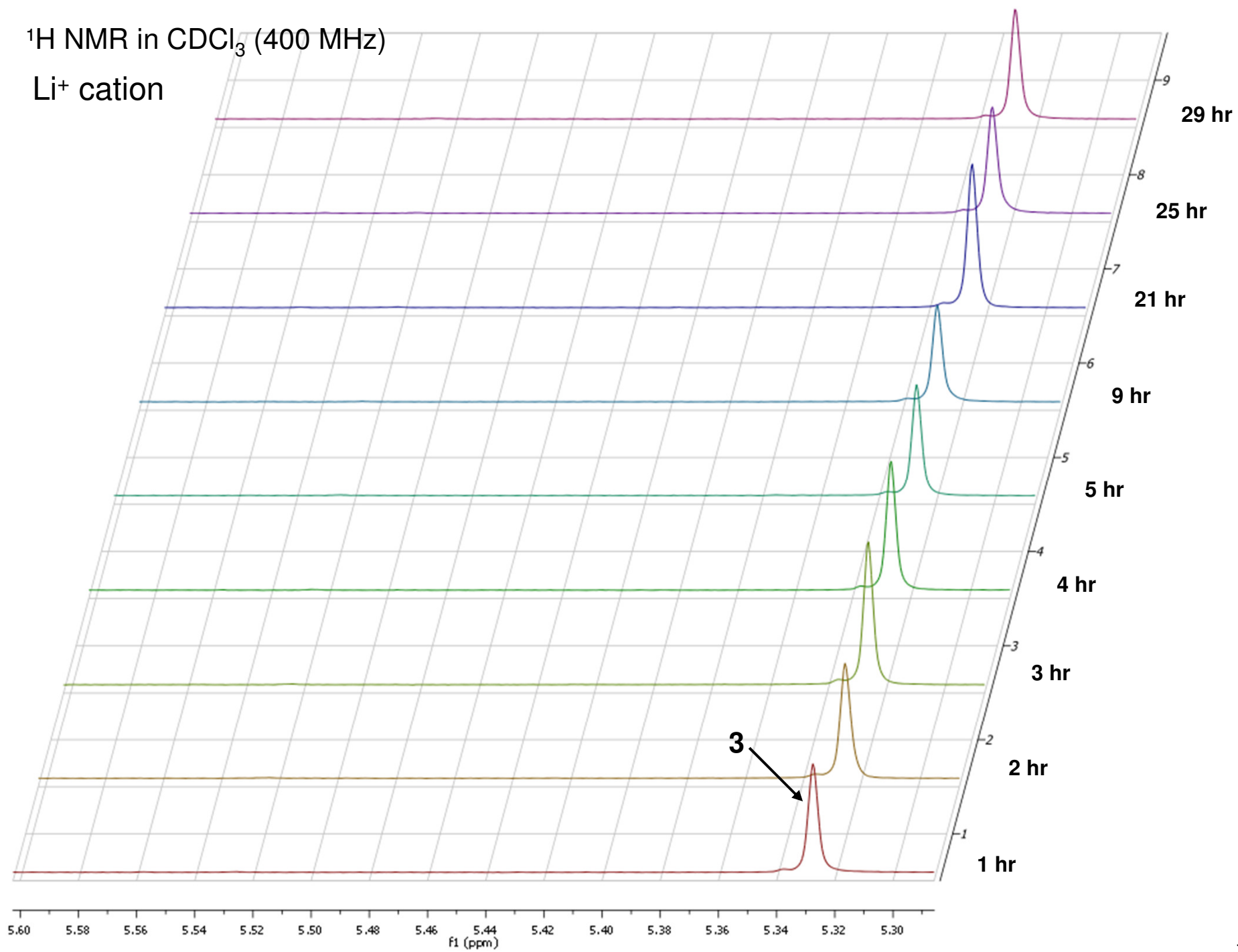


$^1\text{H}_-^1\text{H}$ GCOSY in CDCl_3



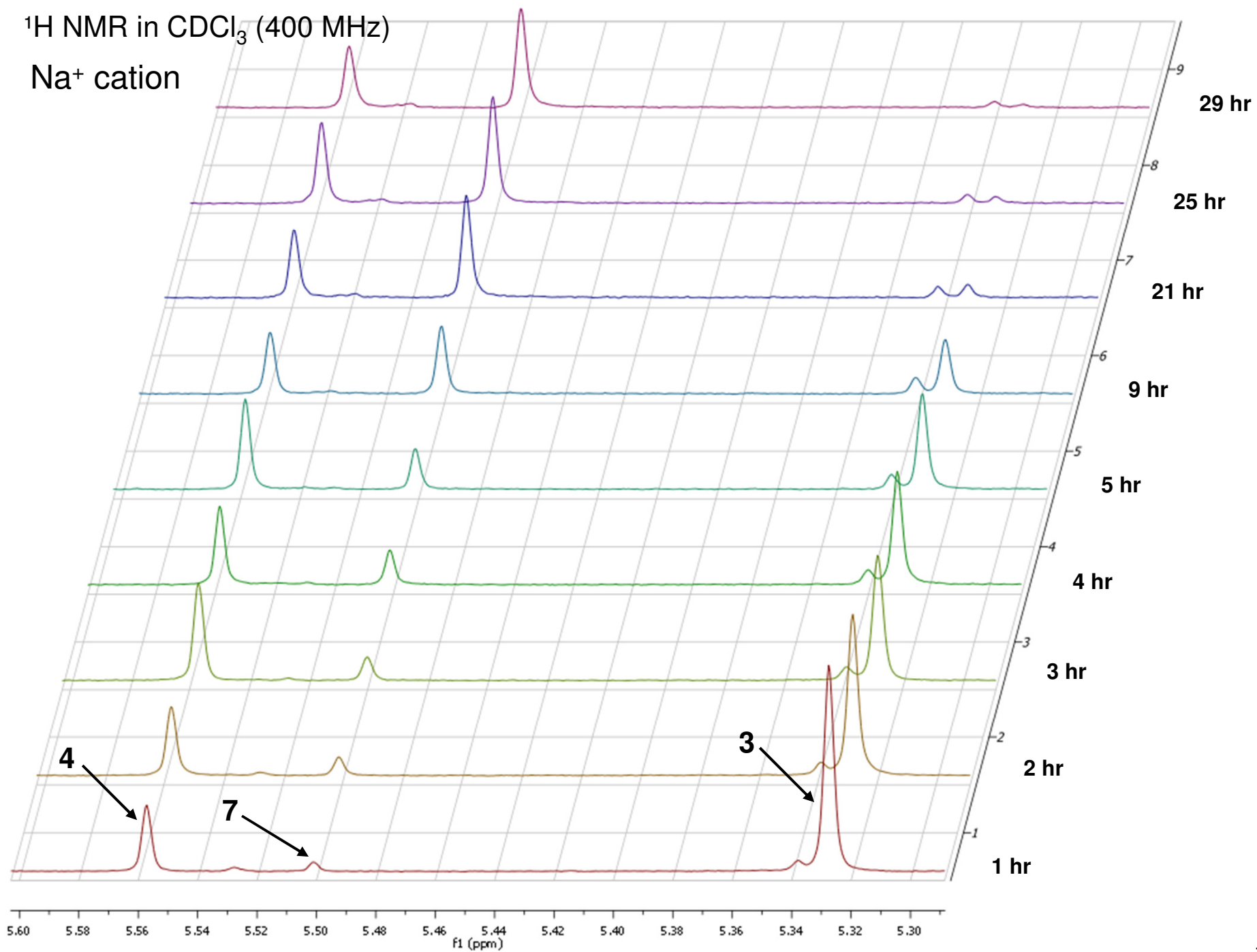
^1H NMR in CDCl_3 (400 MHz)

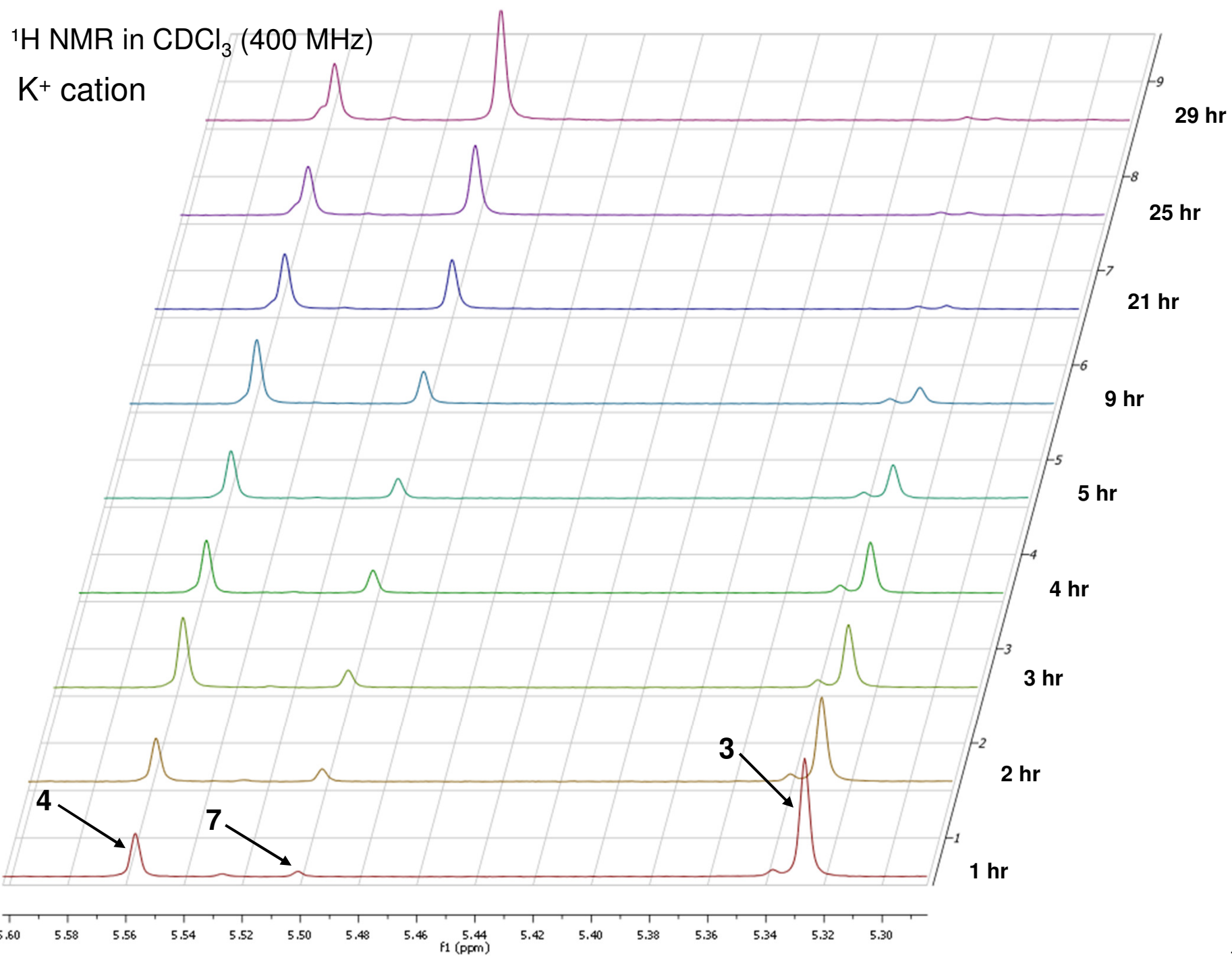
Li^+ cation



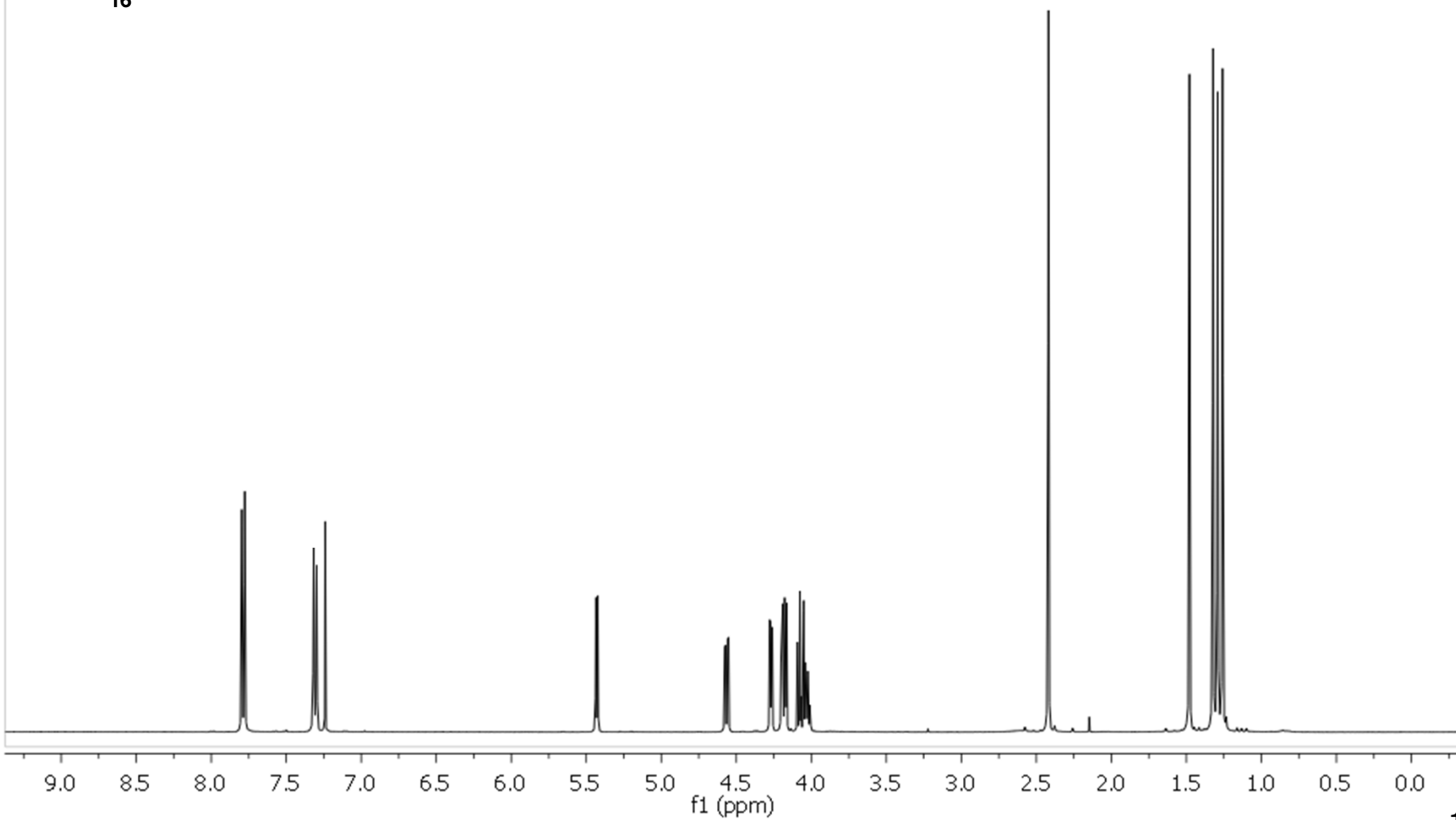
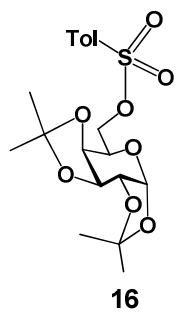
^1H NMR in CDCl_3 (400 MHz)

Na^+ cation

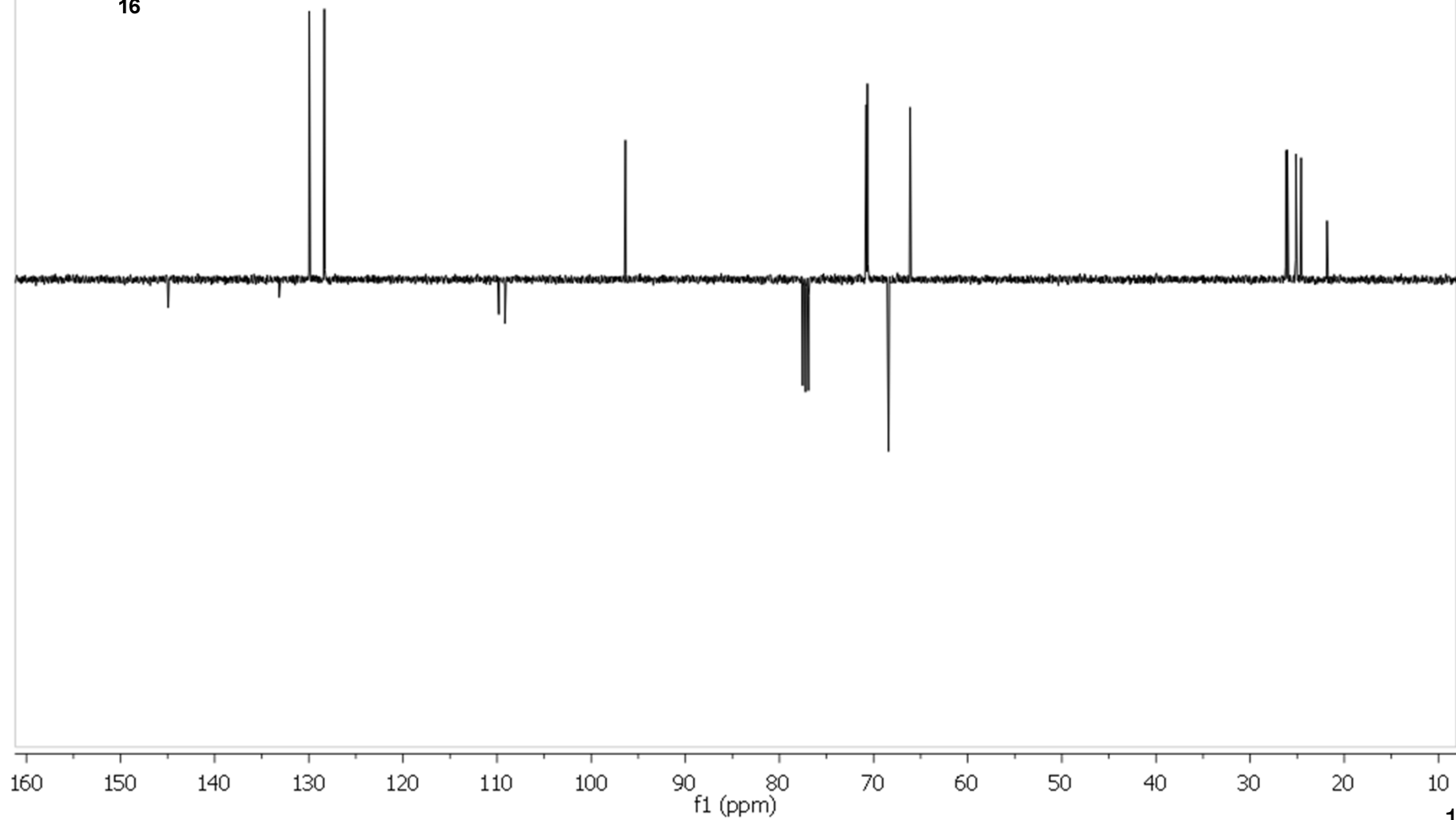
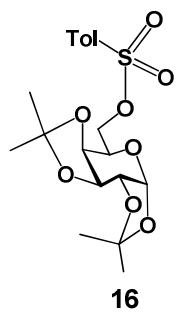




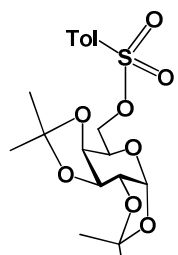
^1H NMR in CDCl_3 (400 MHz)



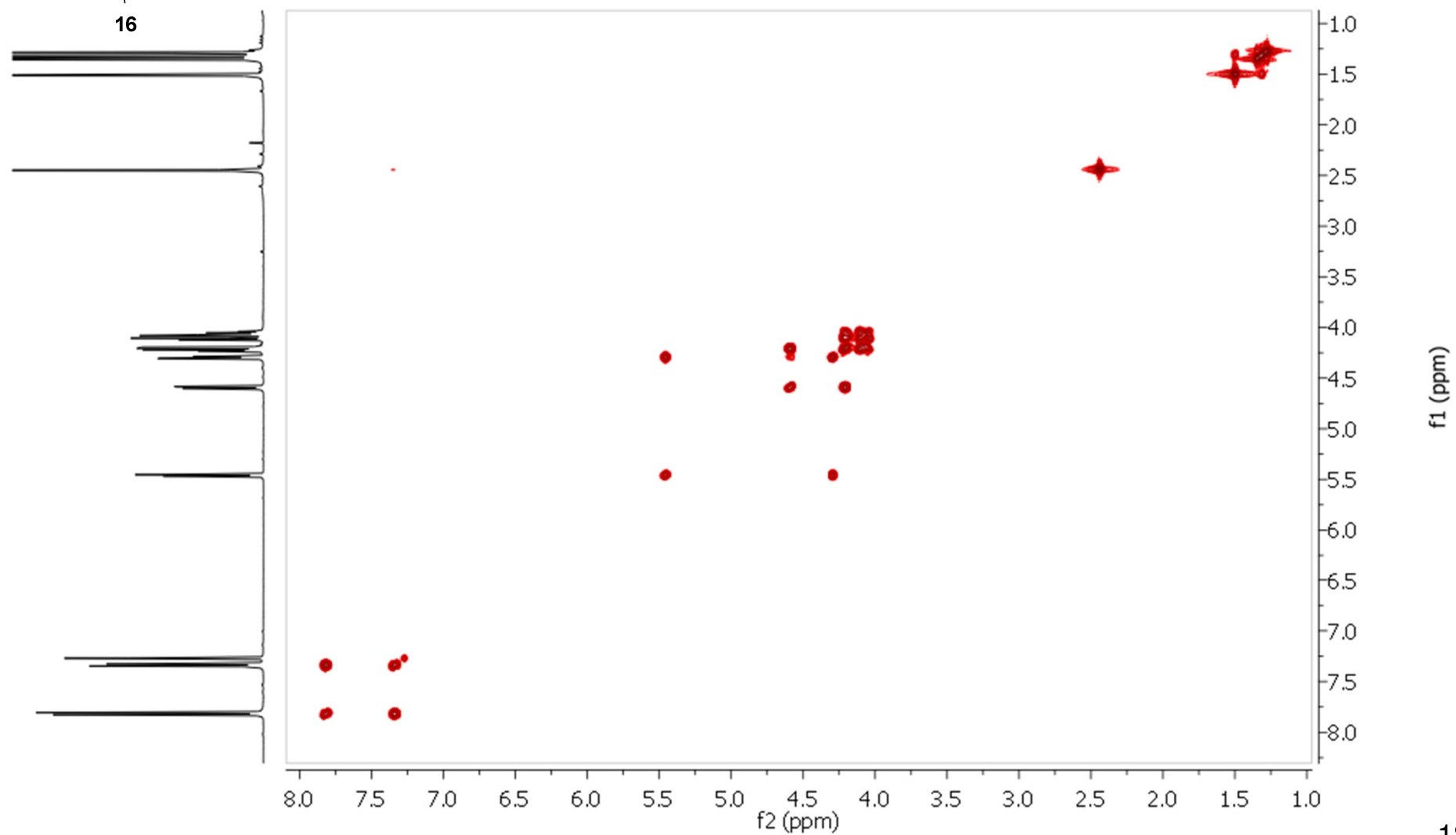
^{13}C NMR (DEPTQ) in CDCl_3 (100 MHz)



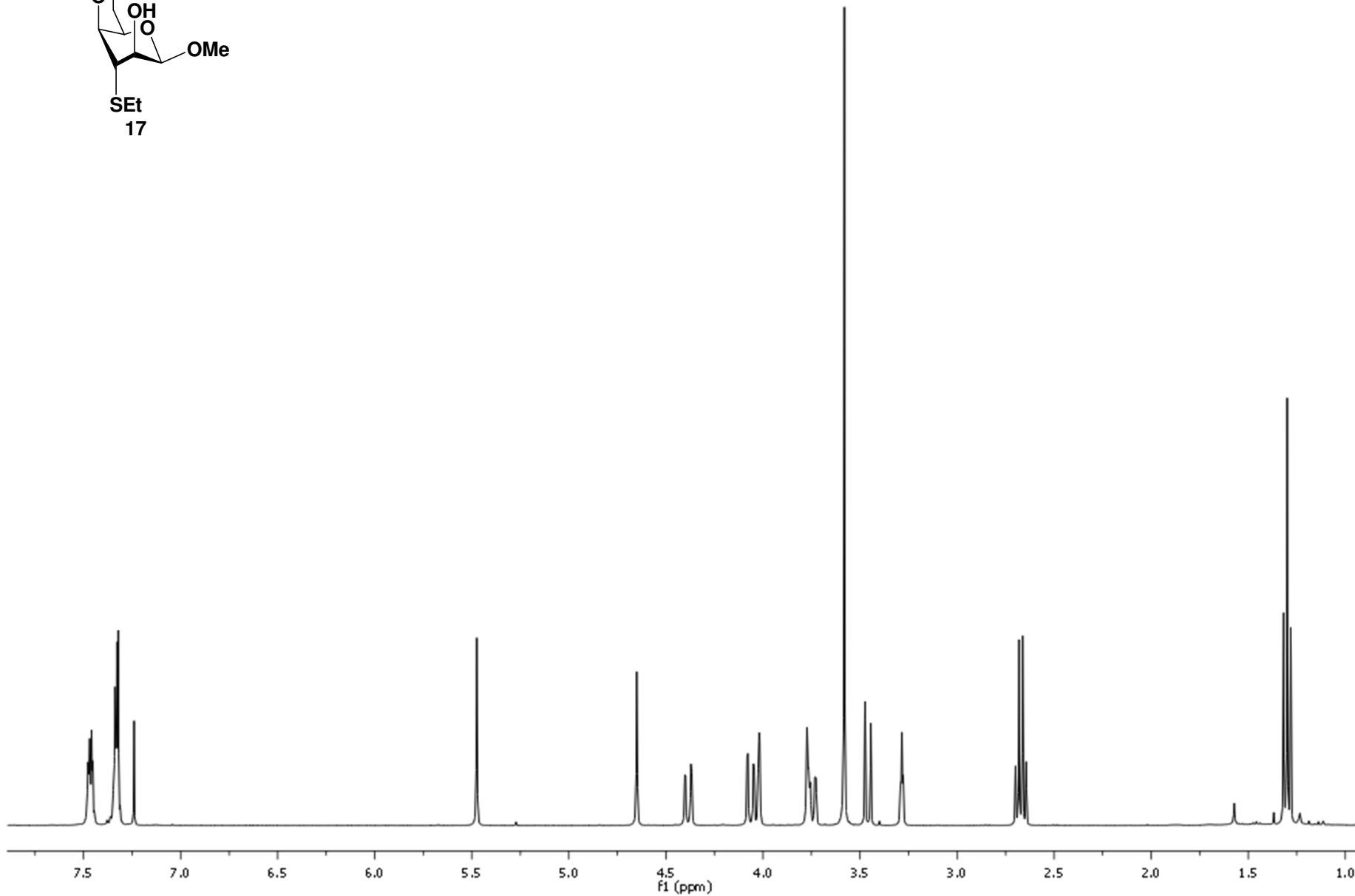
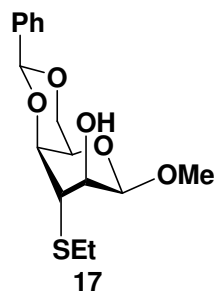
^1H - ^1H GCOSY in CDCl_3



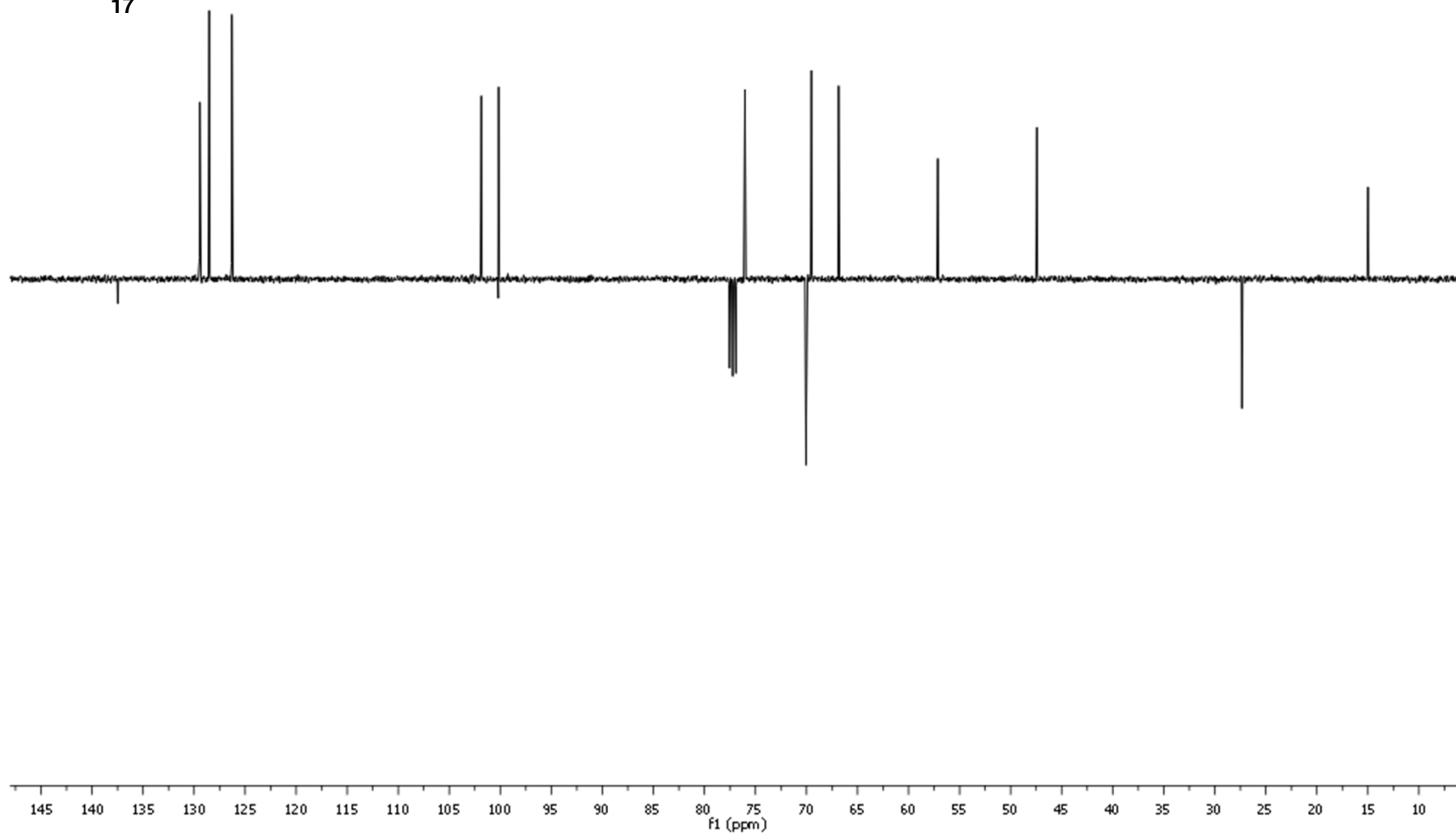
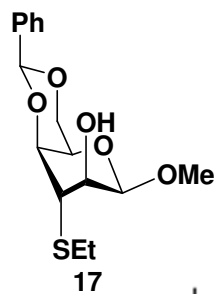
16



¹H NMR in CDCl₃ (400 MHz)



^{13}C NMR (APT) in CDCl_3 (100 MHz)



$^1\text{H}_-^1\text{H}$ GCOSY in CDCl_3

