

## Electronic Supplementary Information

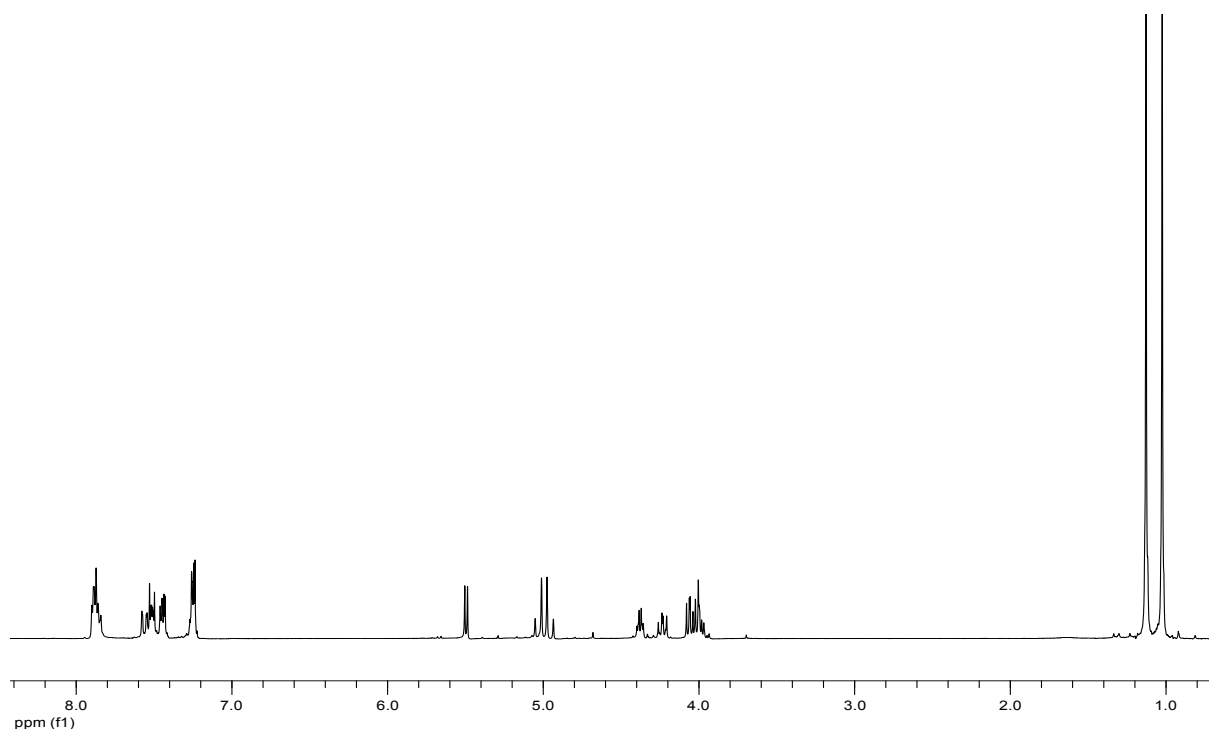
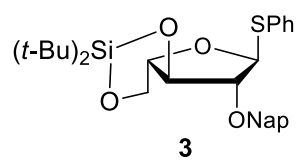
### The chemical synthesis of $\beta$ -arabinofuranosyl containing oligosaccharides derived from plant cell wall extensins

Sophon Kaeothip and Geert-Jan Boons\*

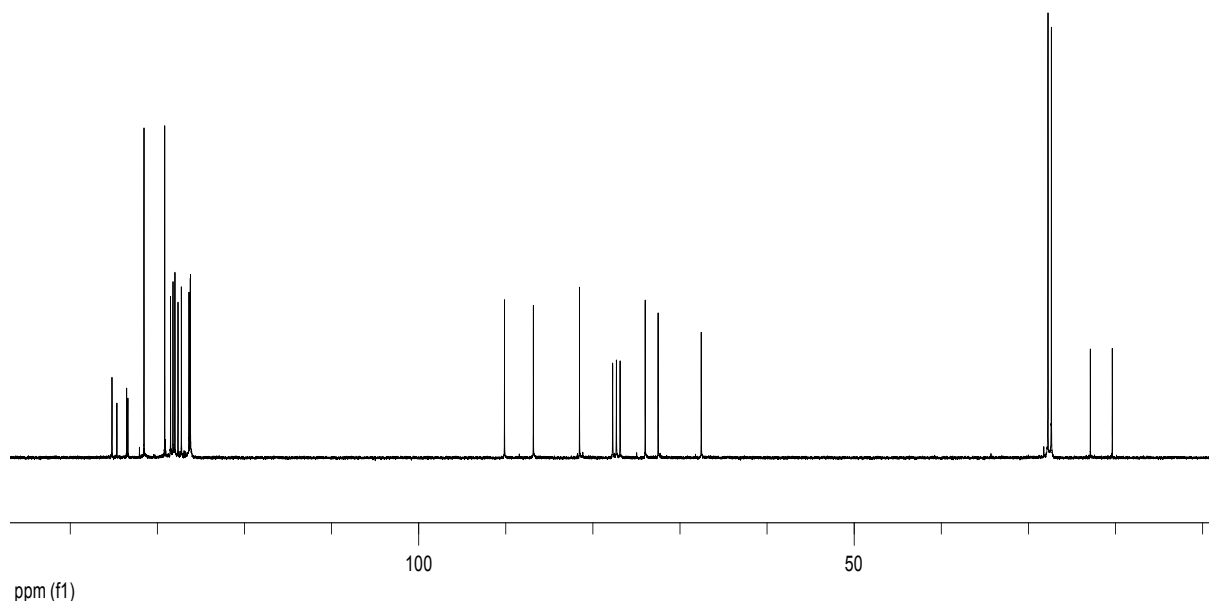
Complex Carbohydrate Research Center, The University of Georgia, 315 Riverbend Road,  
Athens, GA 30602. E-mail: [gjboons@ccrc.uga.edu](mailto:gjboons@ccrc.uga.edu); Fax: +1 706-542-4412

**This pdf file includes:**

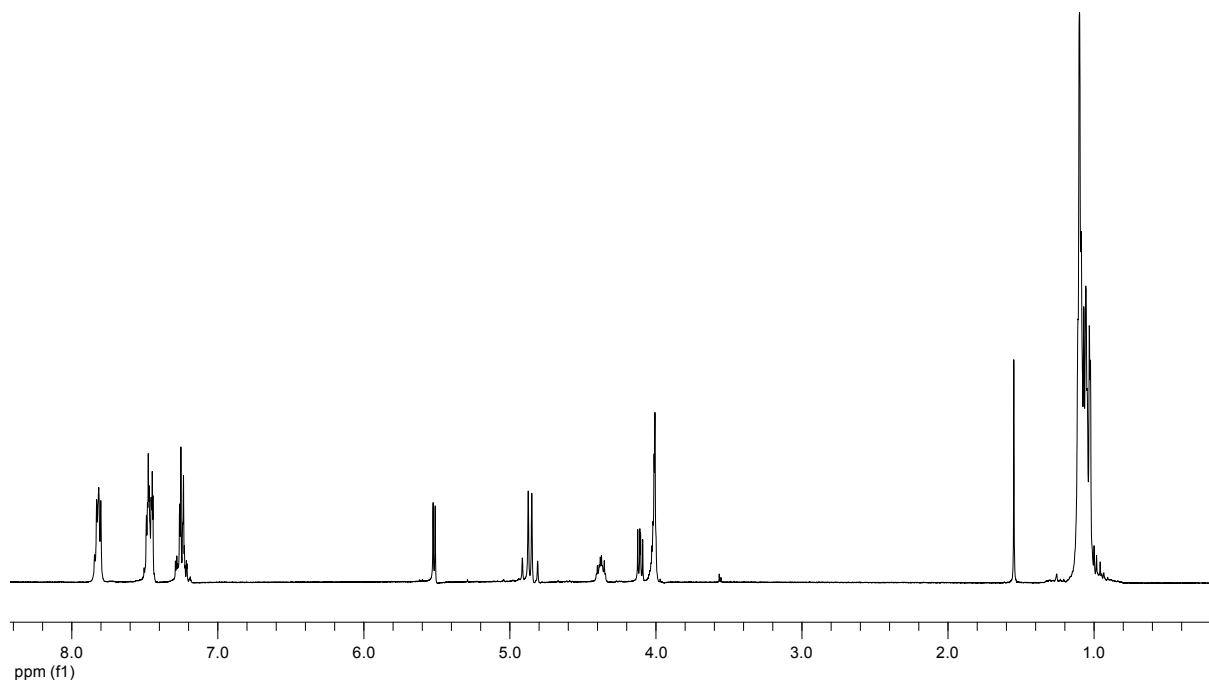
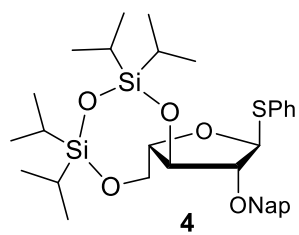
NMR spectra synthetic compounds



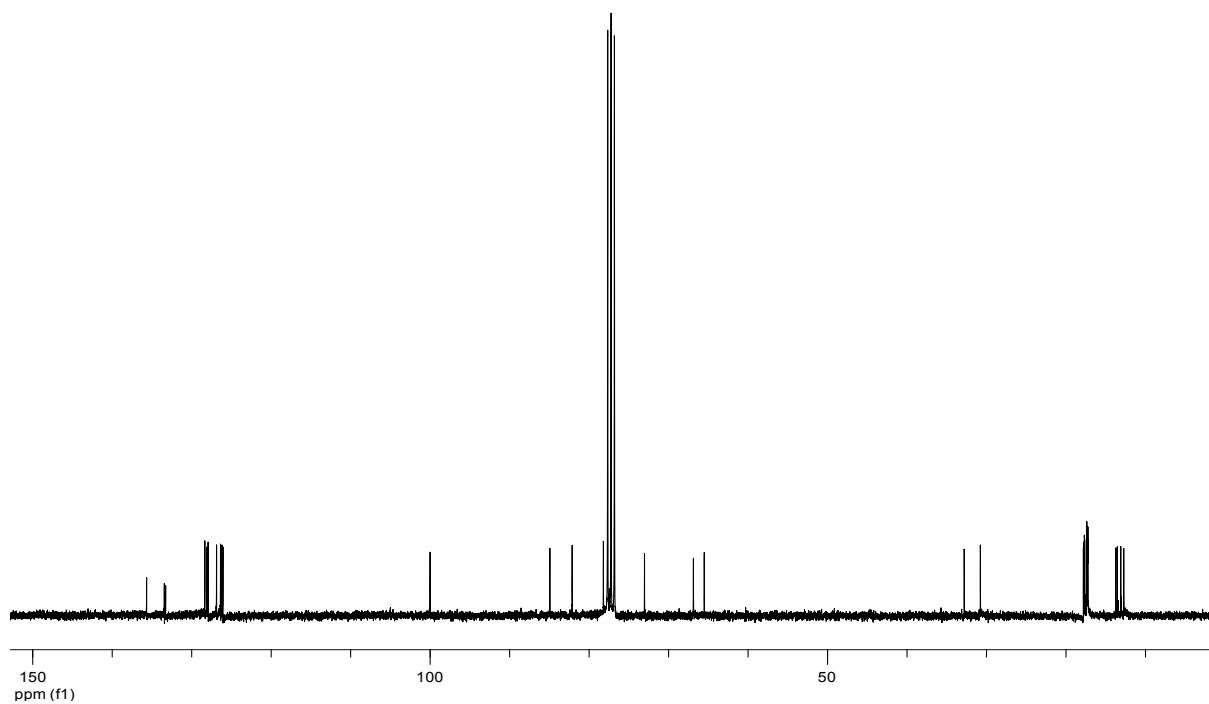
$\text{CDCl}_3$ , 300 MHz



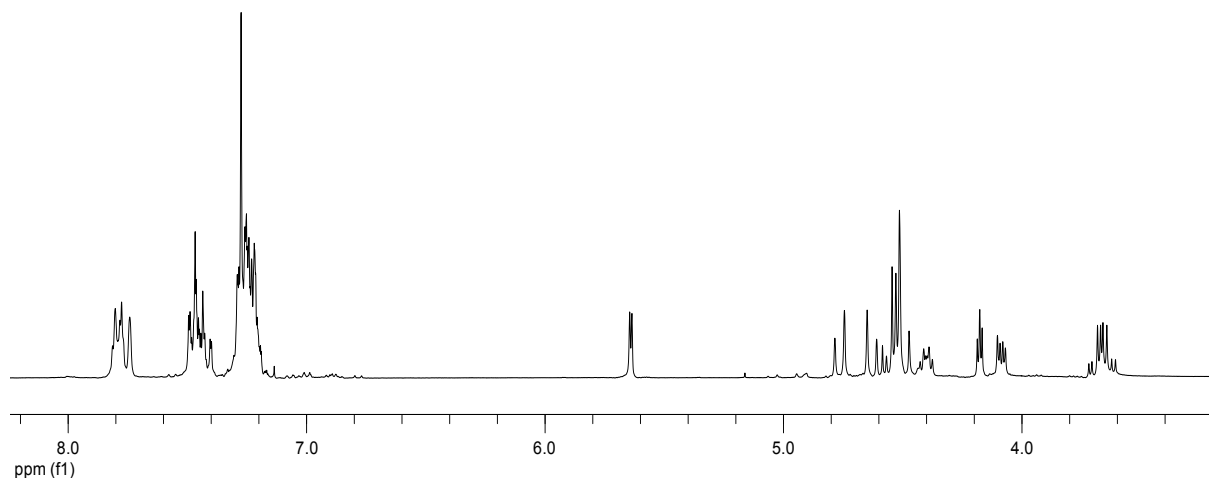
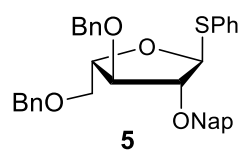
$\text{CDCl}_3$ , 75 MHz



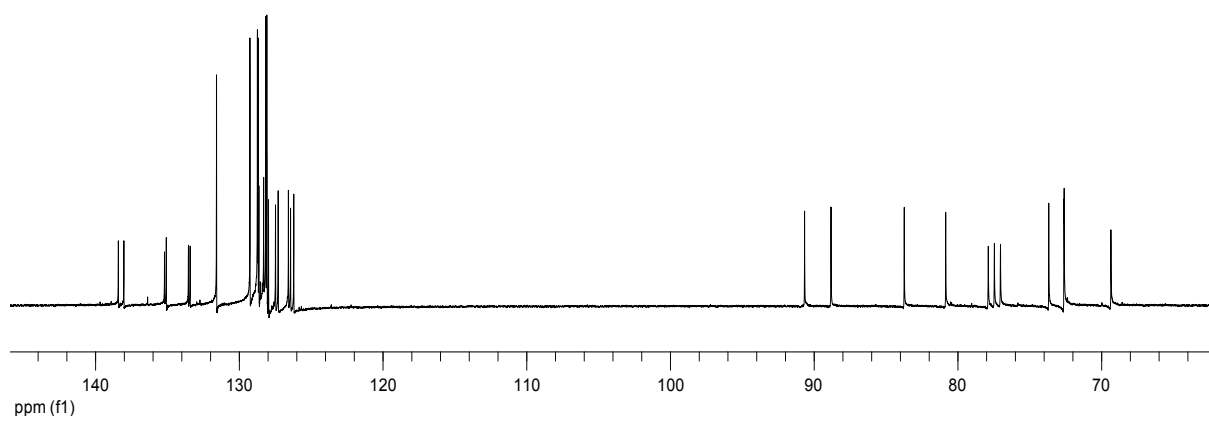
$\text{CDCl}_3$ , 300 MHz



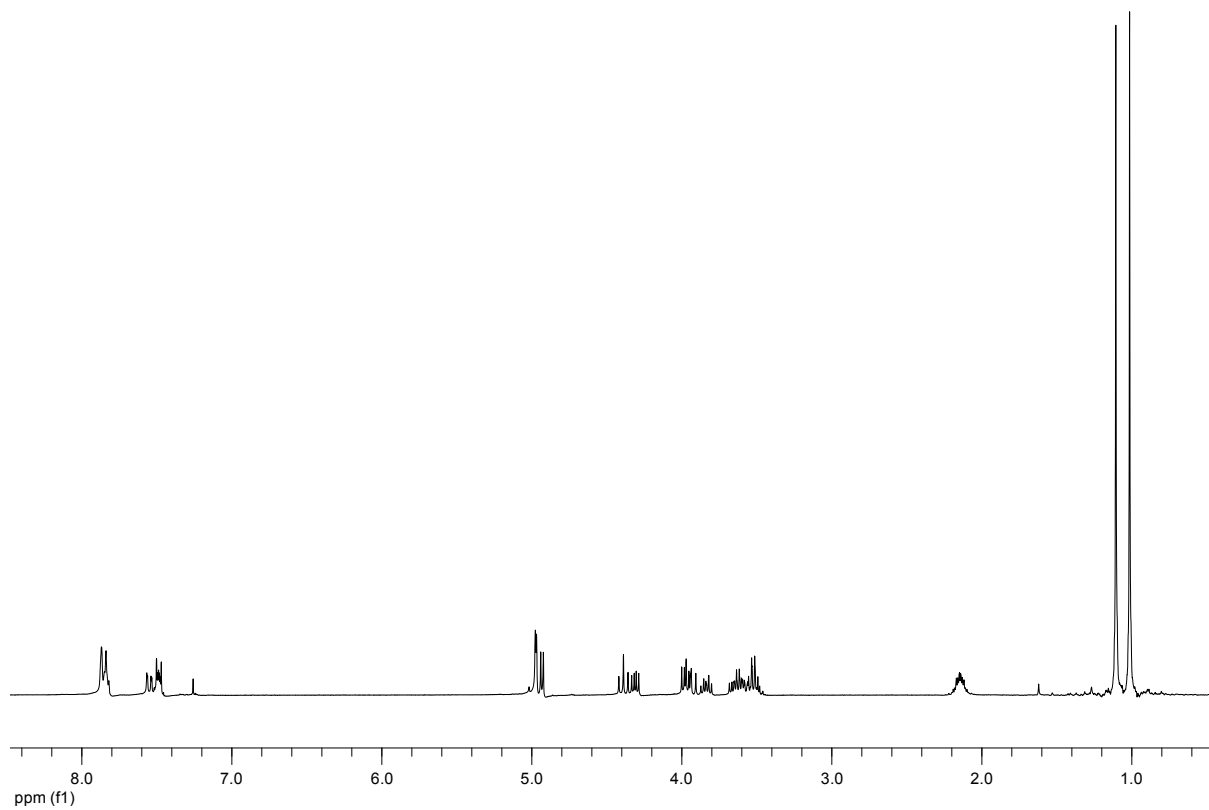
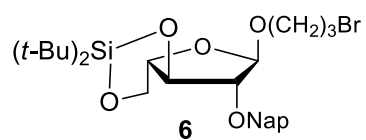
$\text{CDCl}_3$ , 75 MHz



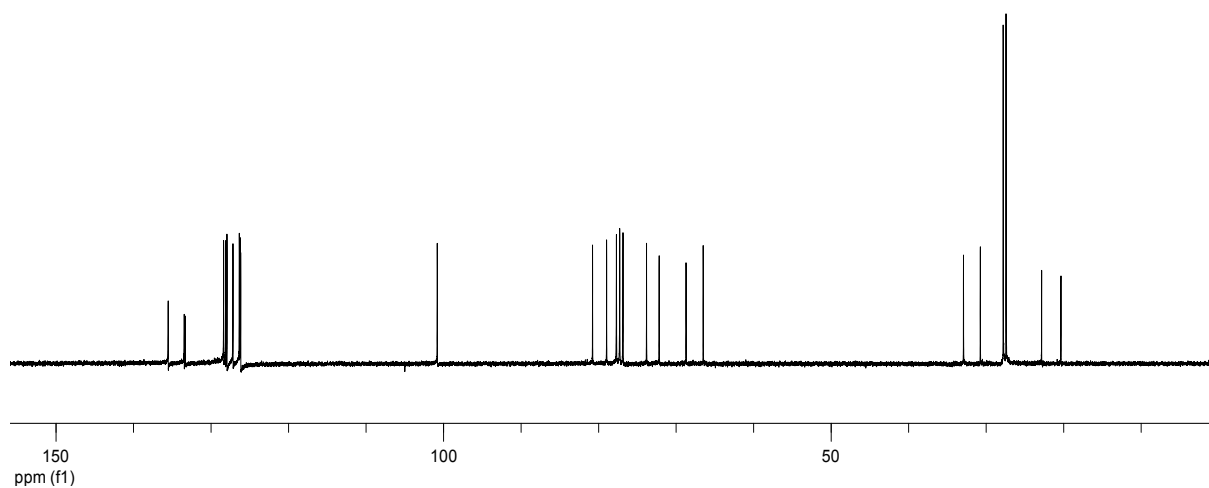
CDCl<sub>3</sub>, 300 MHz



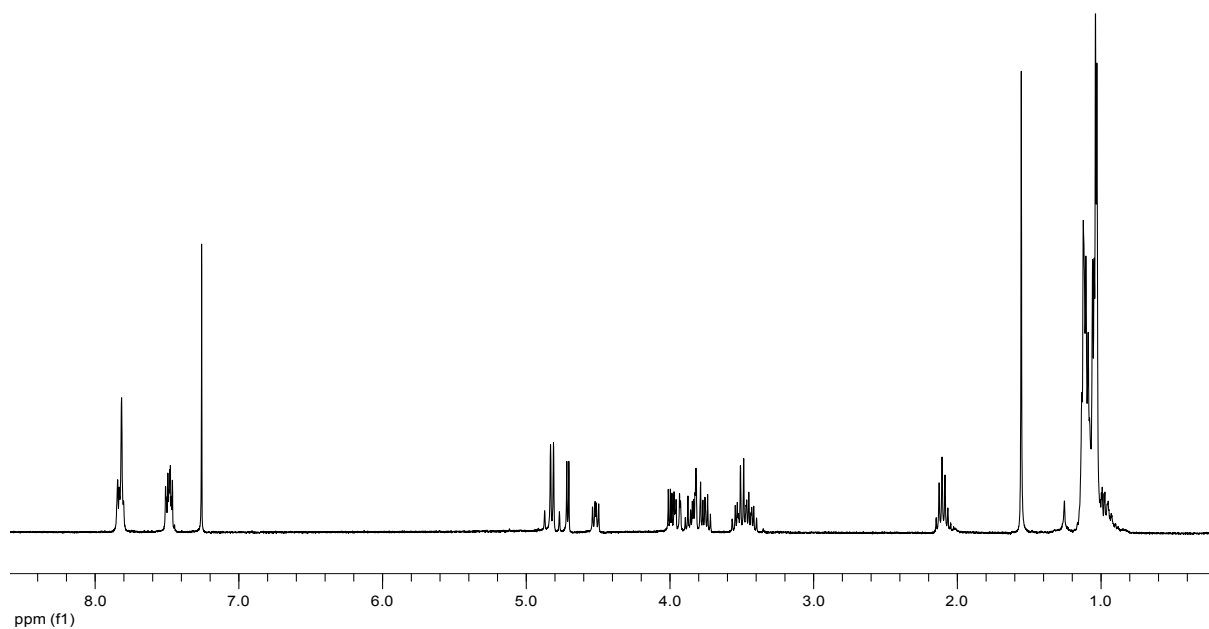
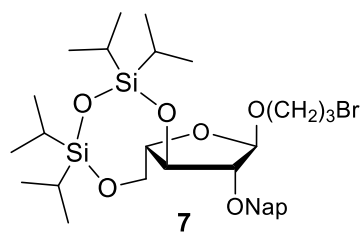
CDCl<sub>3</sub>, 75 MHz



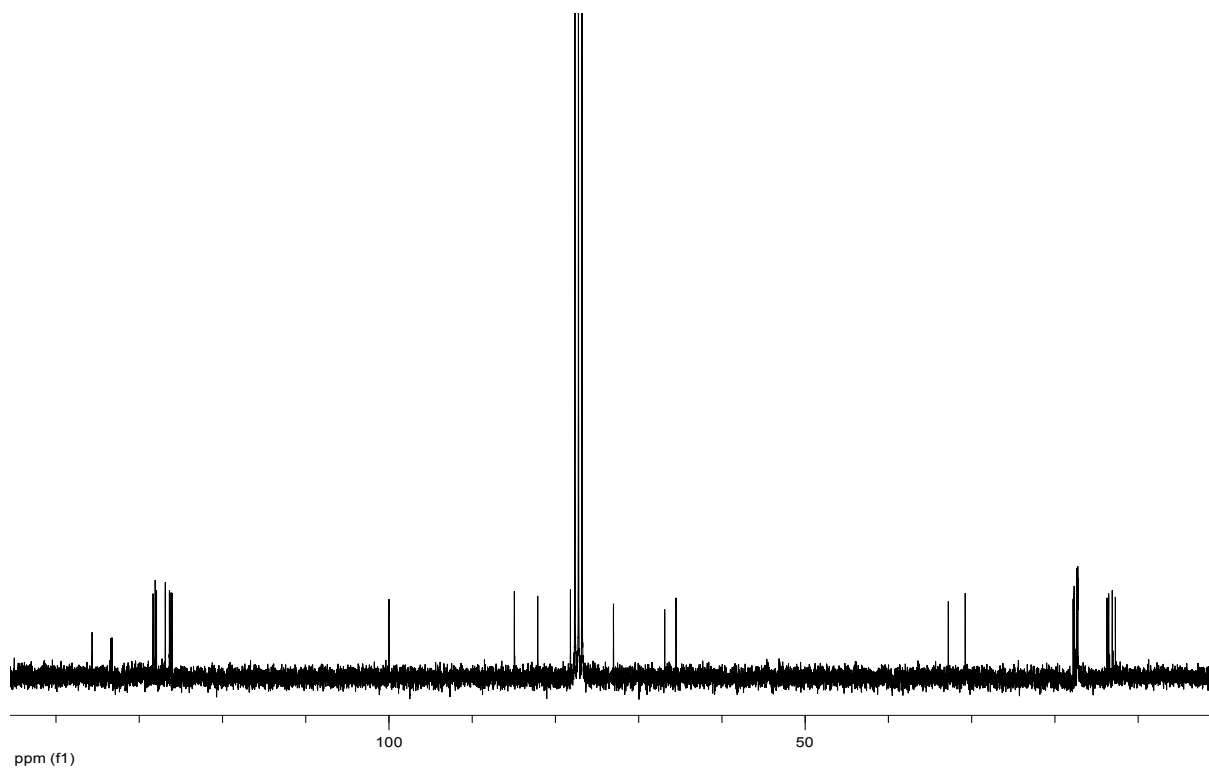
$\text{CDCl}_3$ , 300 MHz



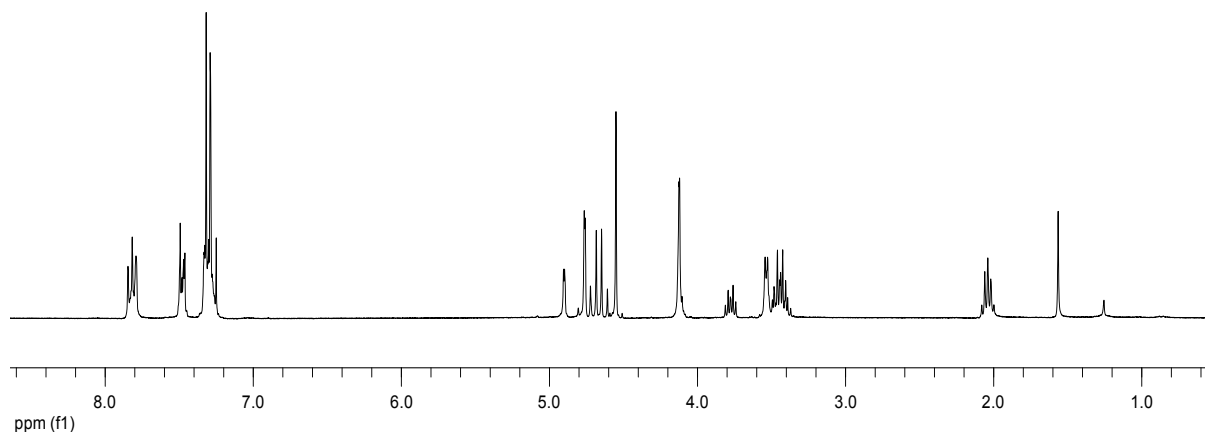
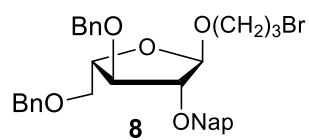
$\text{CDCl}_3$ , 75 MHz



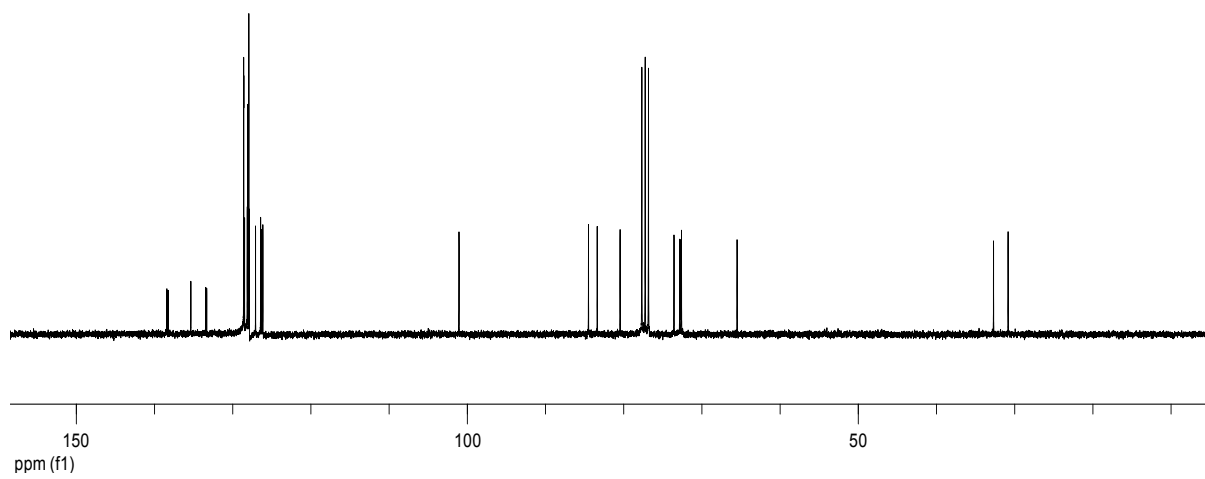
CDCl<sub>3</sub>, 300 MHz



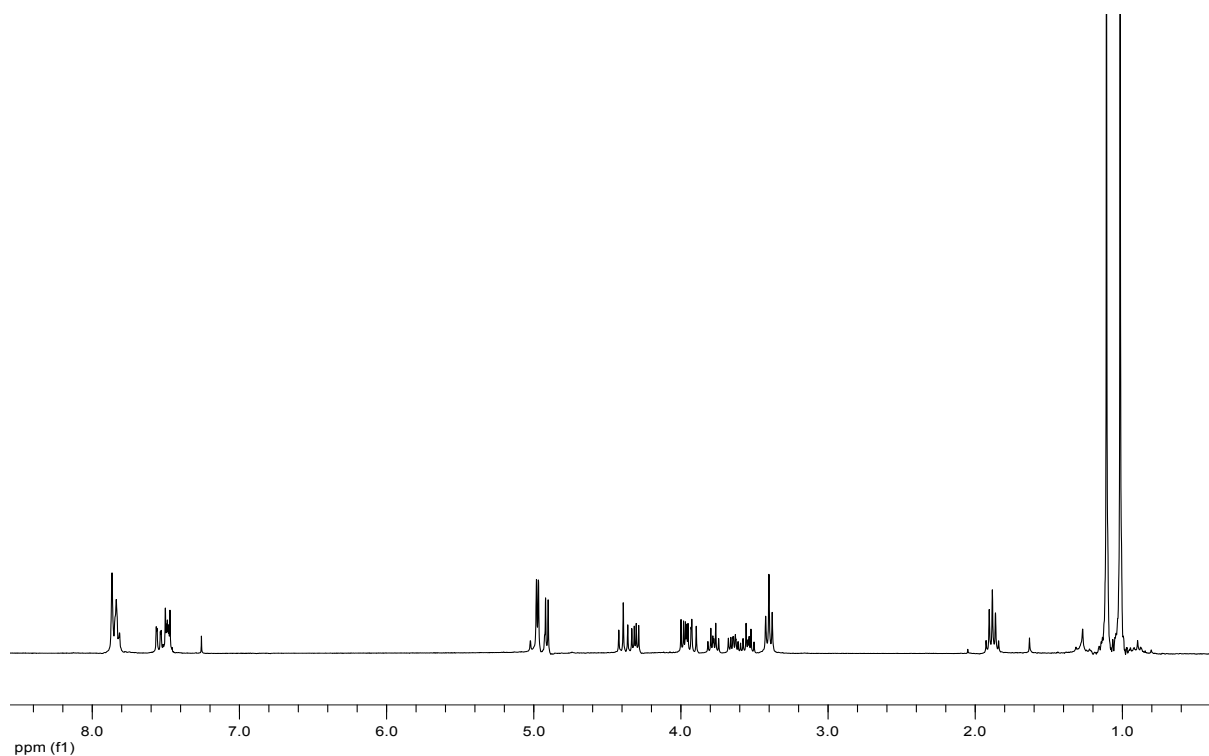
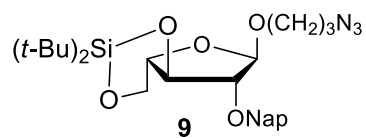
CDCl<sub>3</sub>, 75 MHz



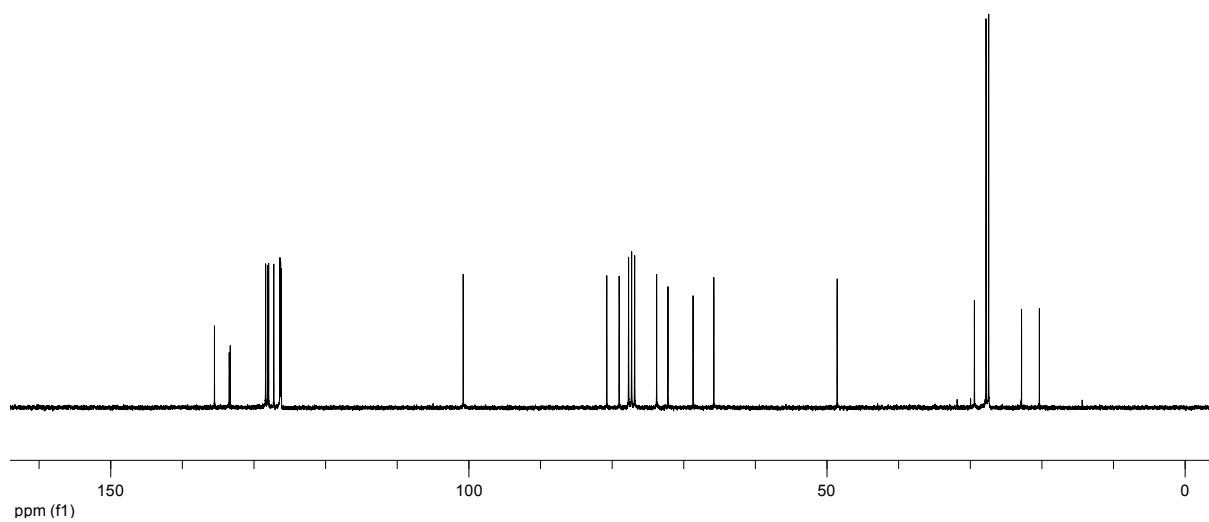
CDCl<sub>3</sub>, 300 MHz



CDCl<sub>3</sub>, 75 MHz

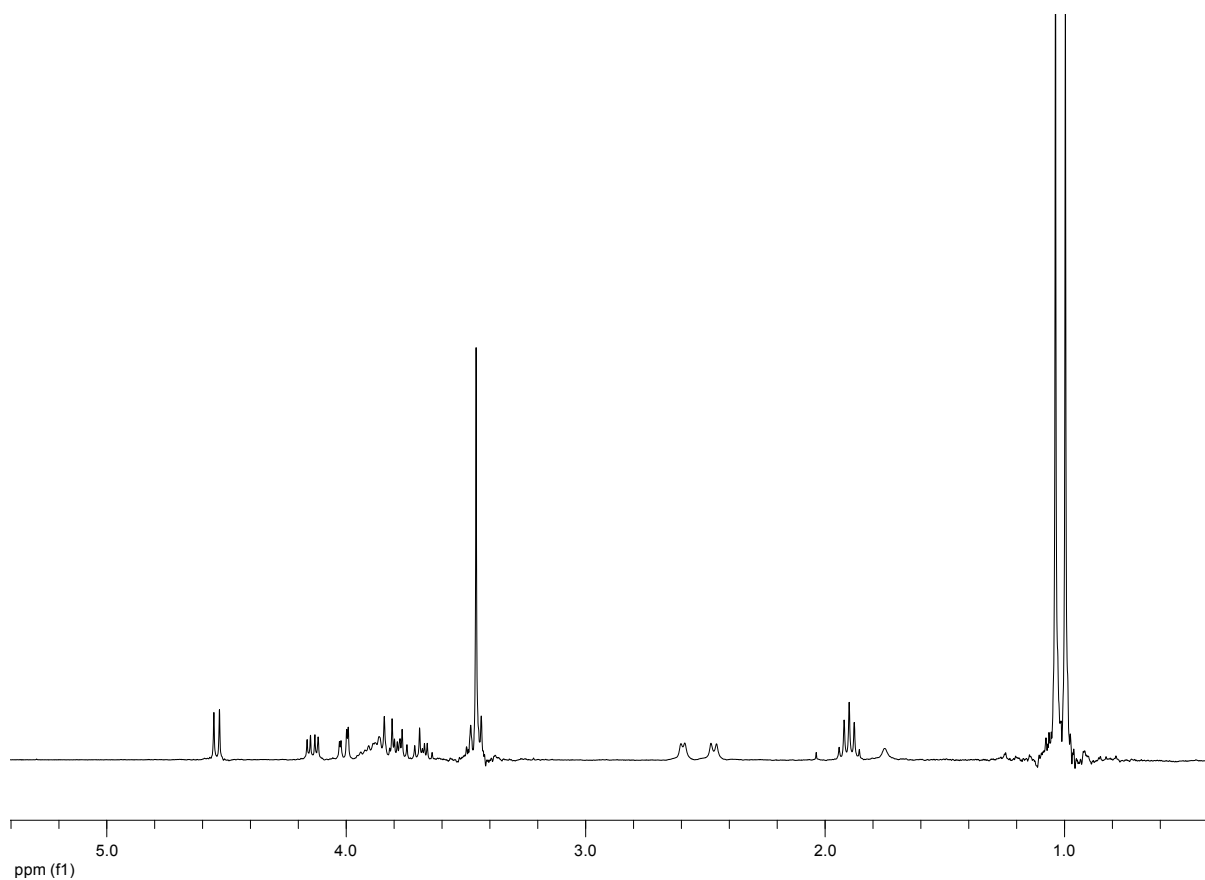
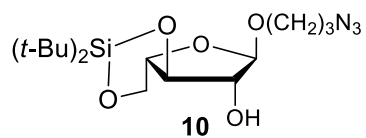


$\text{CDCl}_3$ , 300 MHz

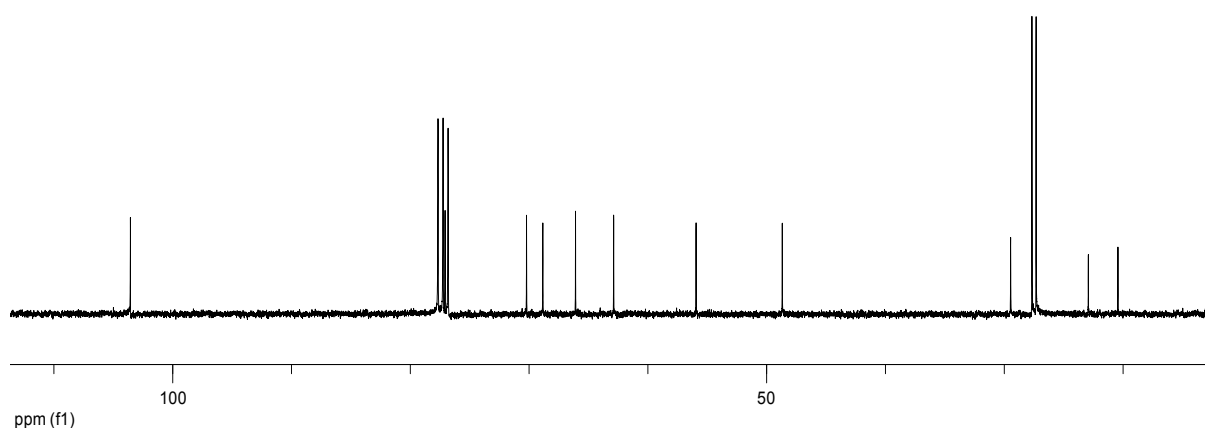


$\text{CDCl}_3$ , 75 MHz

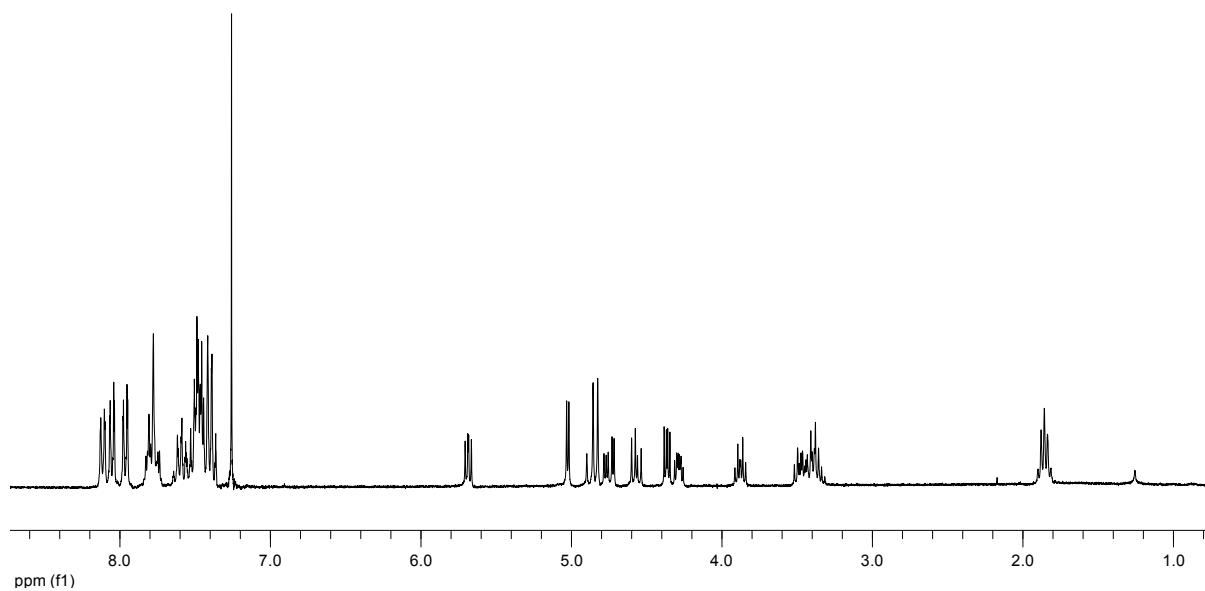
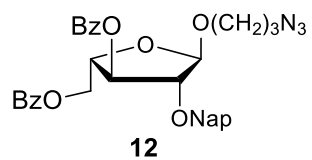




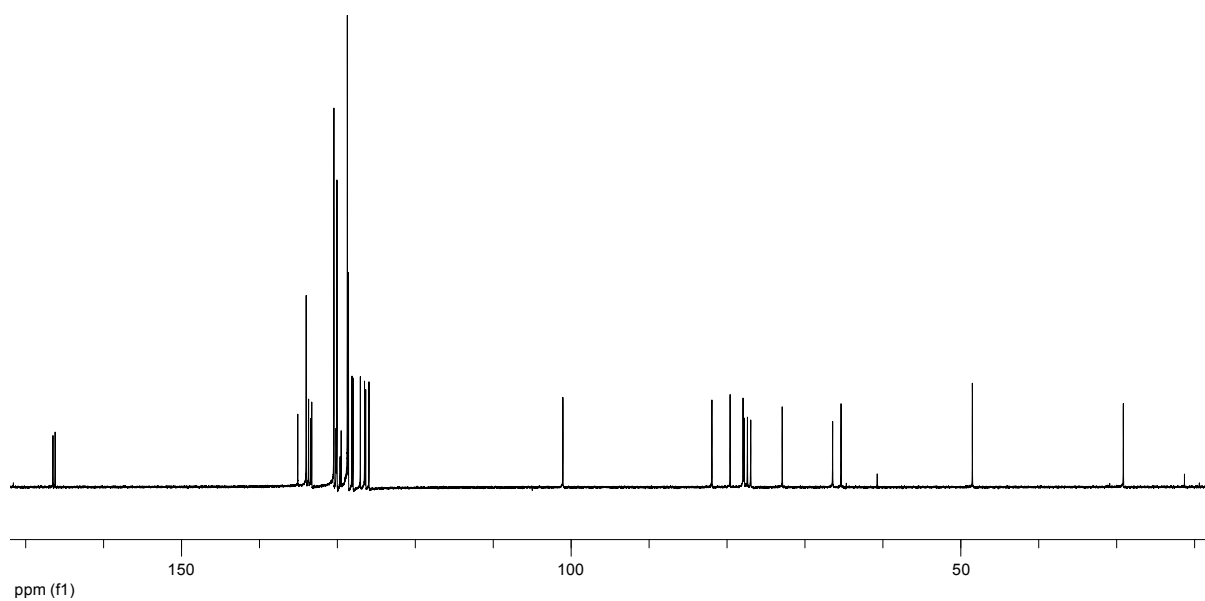
CDCl<sub>3</sub>, 300 MHz



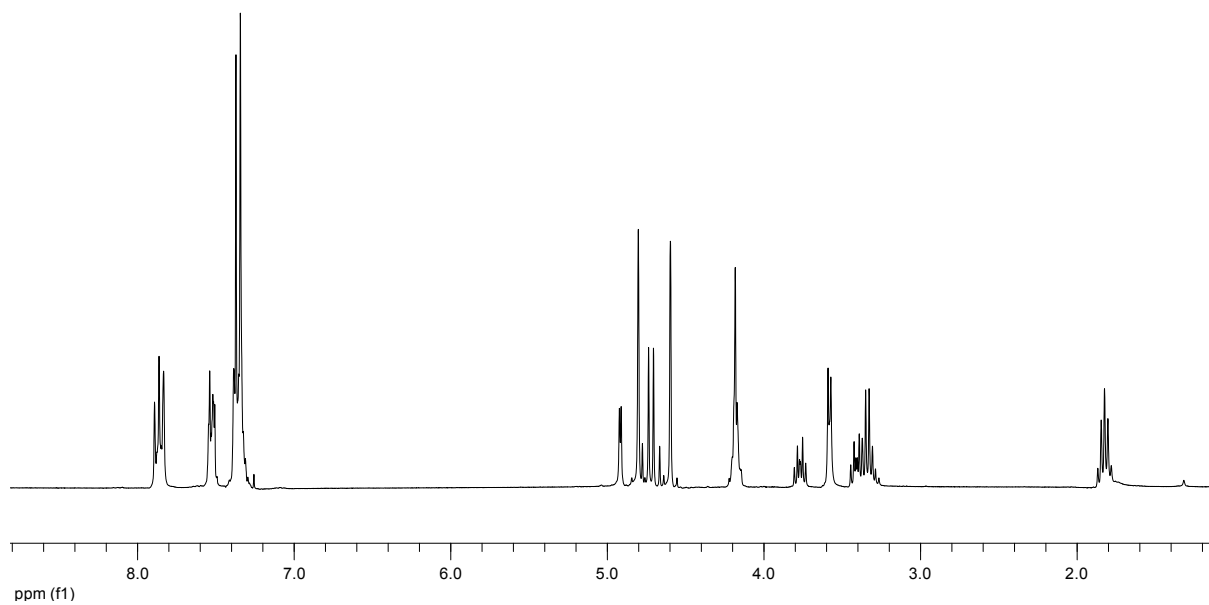
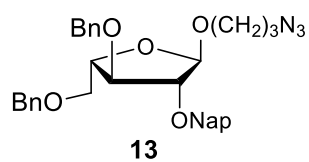
CDCl<sub>3</sub>, 75 MHz



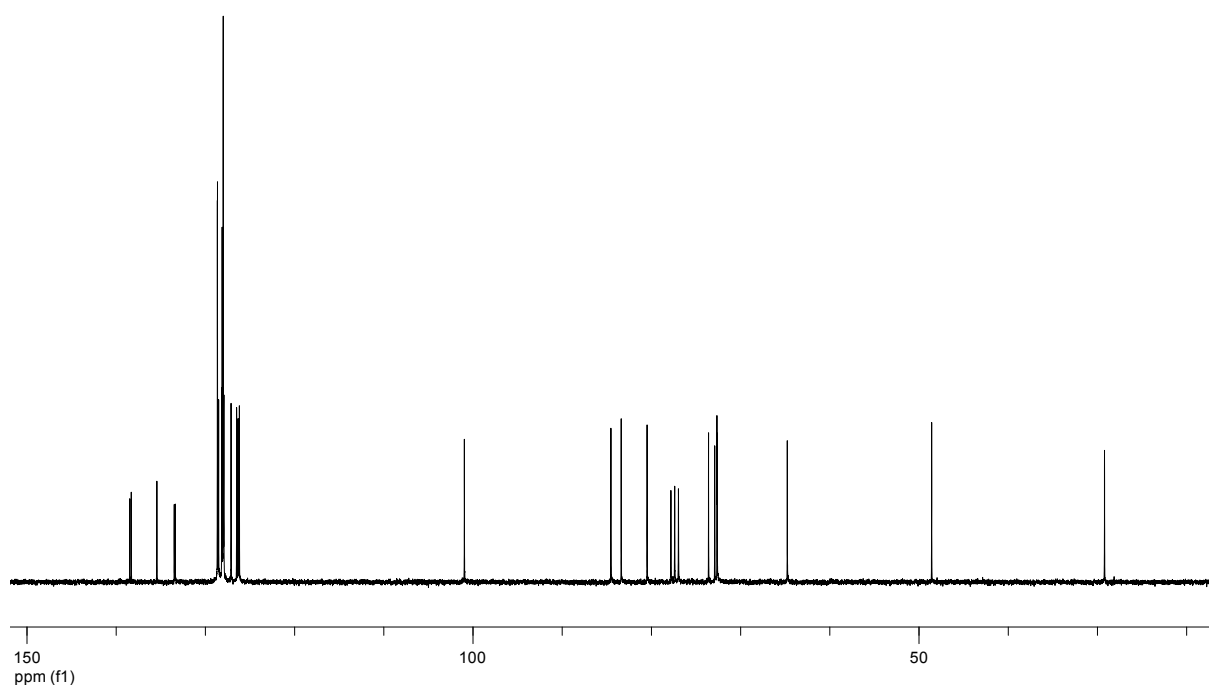
CDCl<sub>3</sub>, 300 MHz



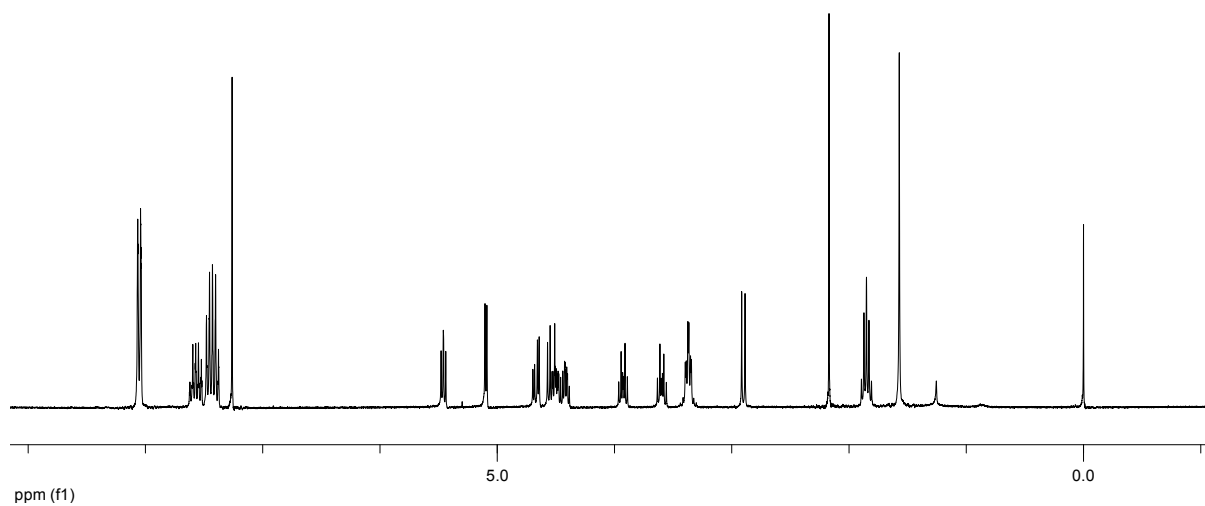
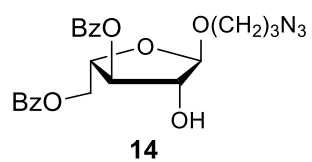
CDCl<sub>3</sub>, 75 MHz



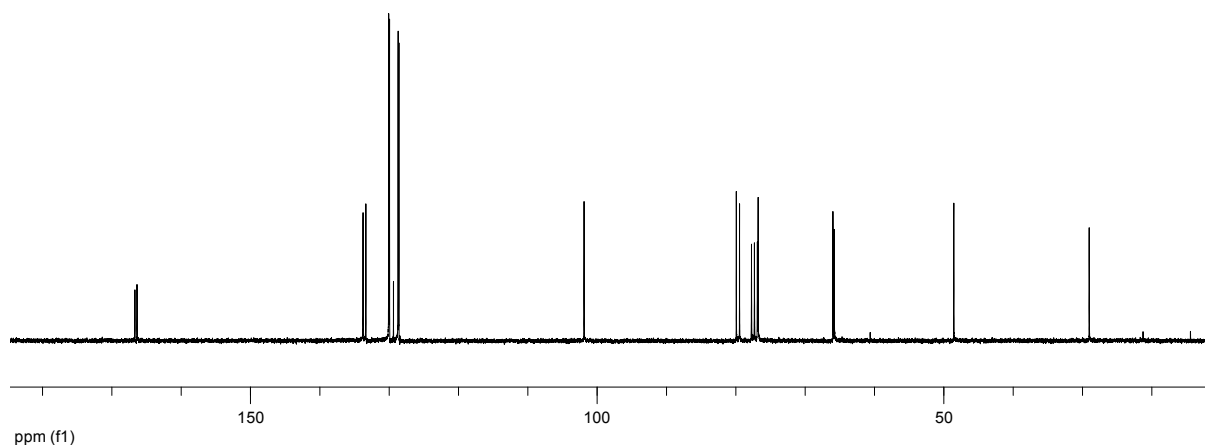
CDCl<sub>3</sub>, 300 MHz



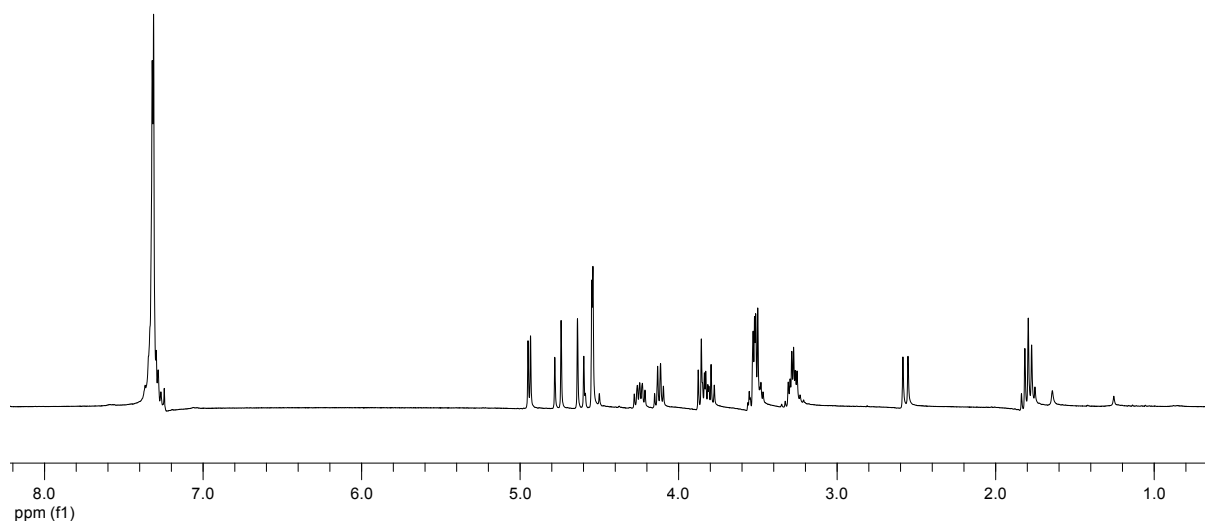
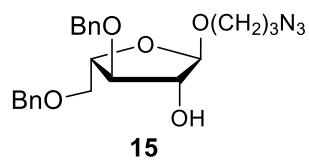
CDCl<sub>3</sub>, 75 MHz



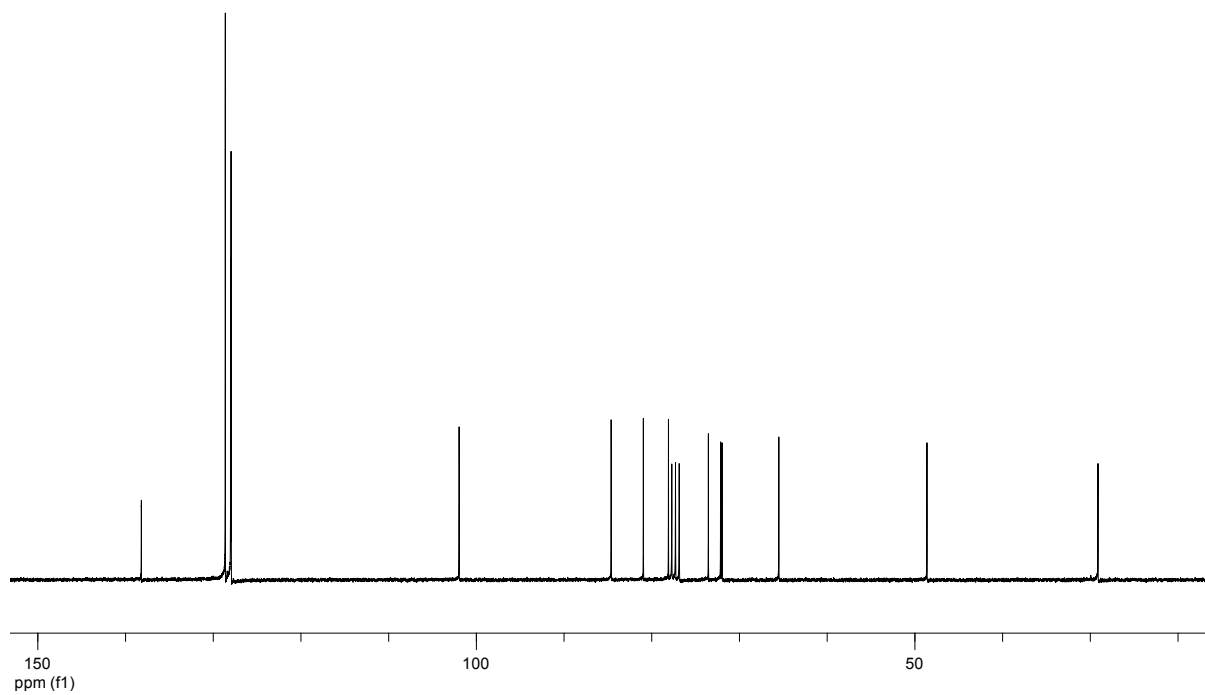
CDCl<sub>3</sub>, 300 MHz



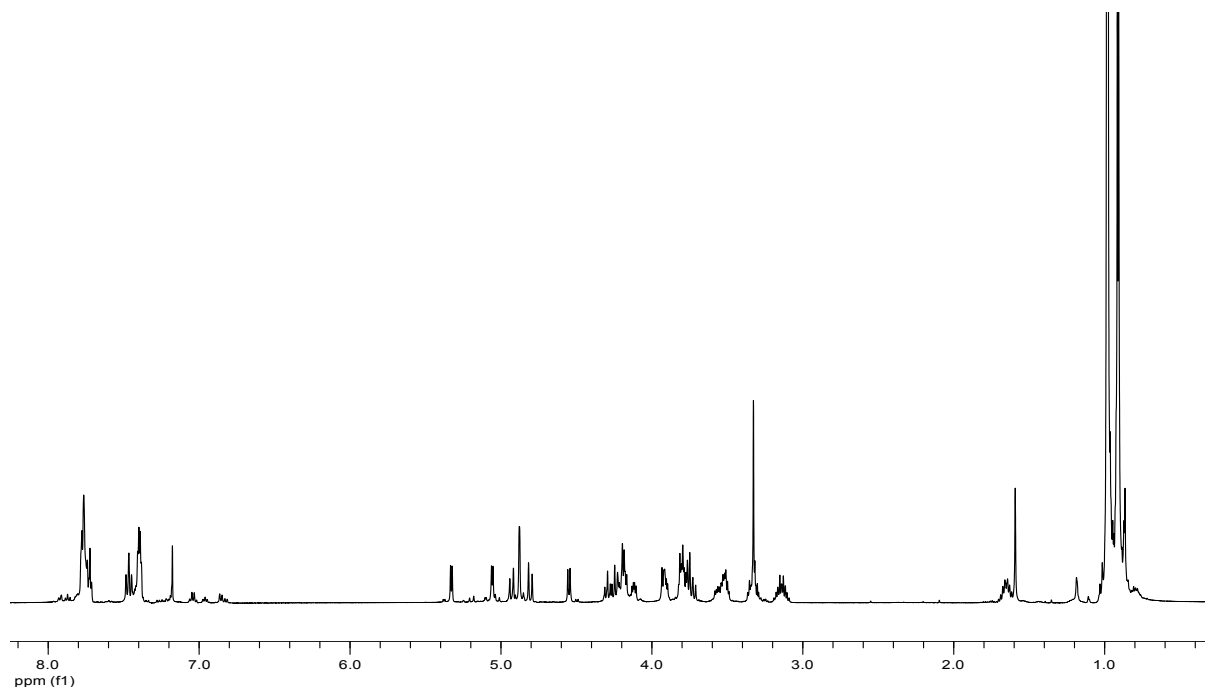
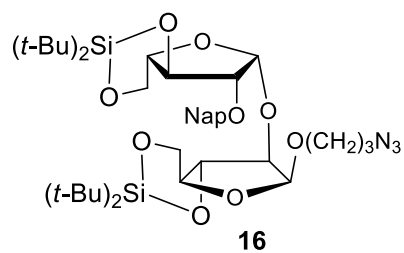
CDCl<sub>3</sub>, 75 MHz



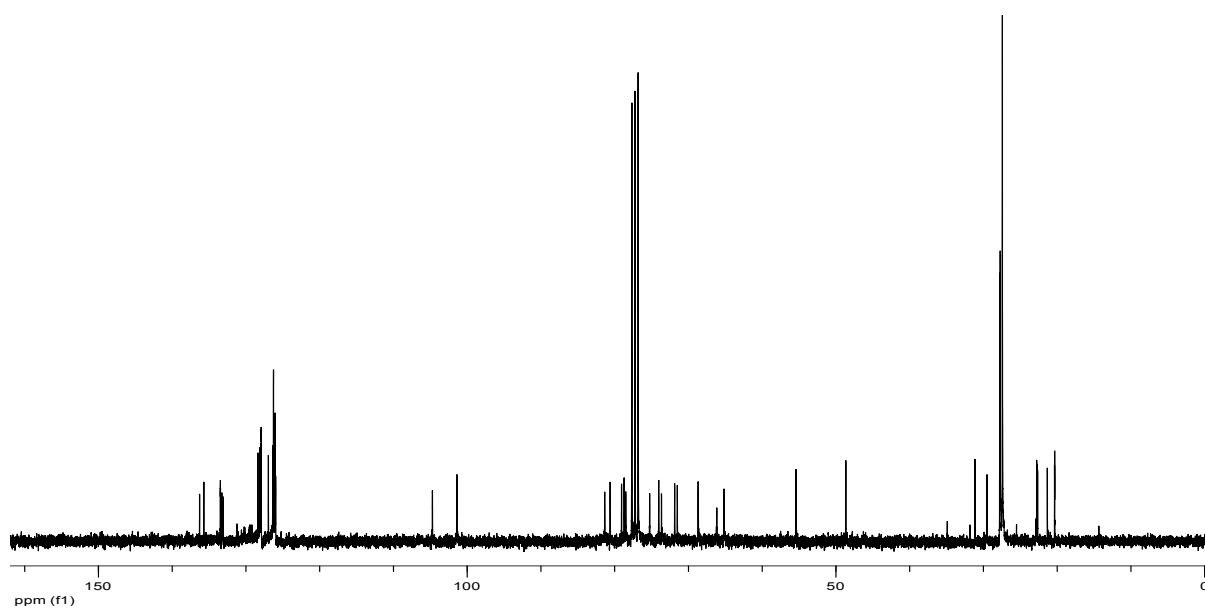
CDCl<sub>3</sub>, 300 MHz



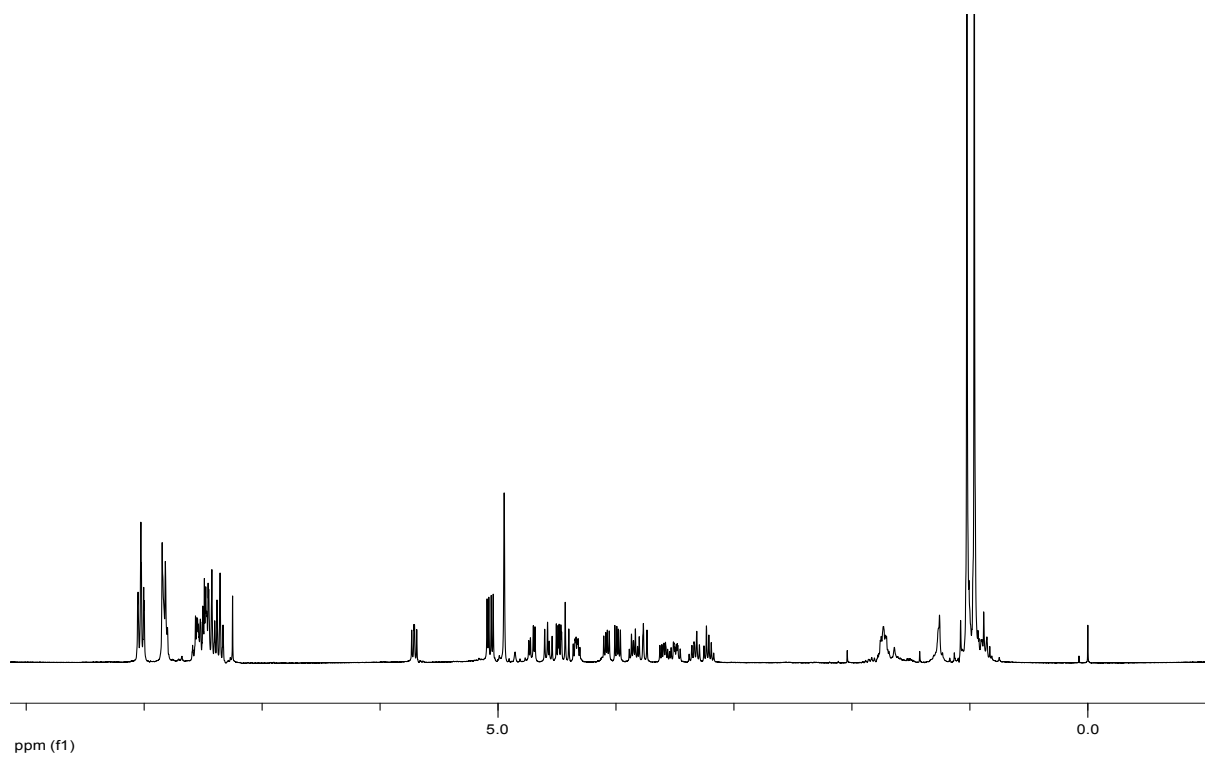
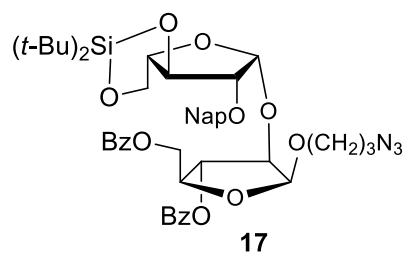
CDCl<sub>3</sub>, 75 MHz



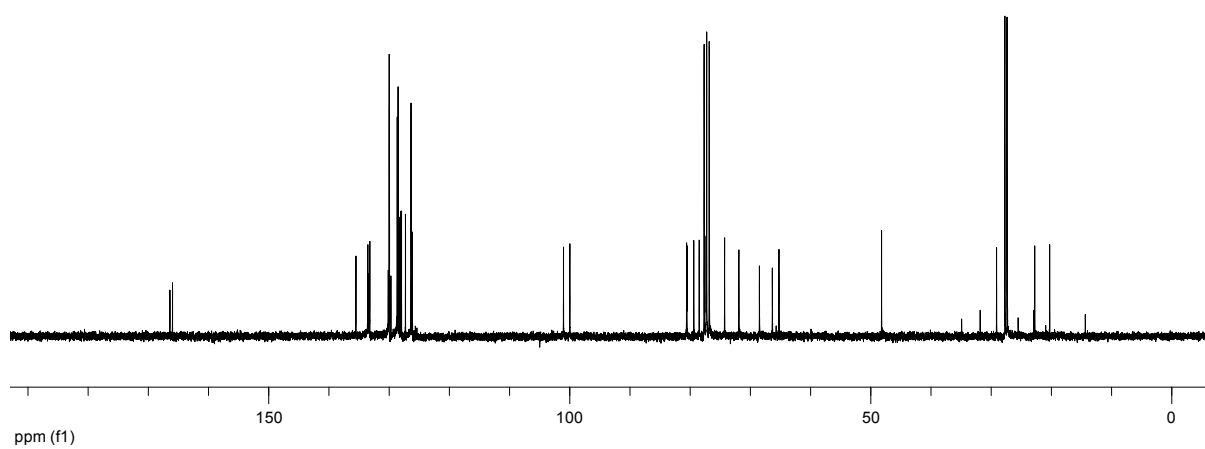
$\text{CDCl}_3$ , 500 MHz



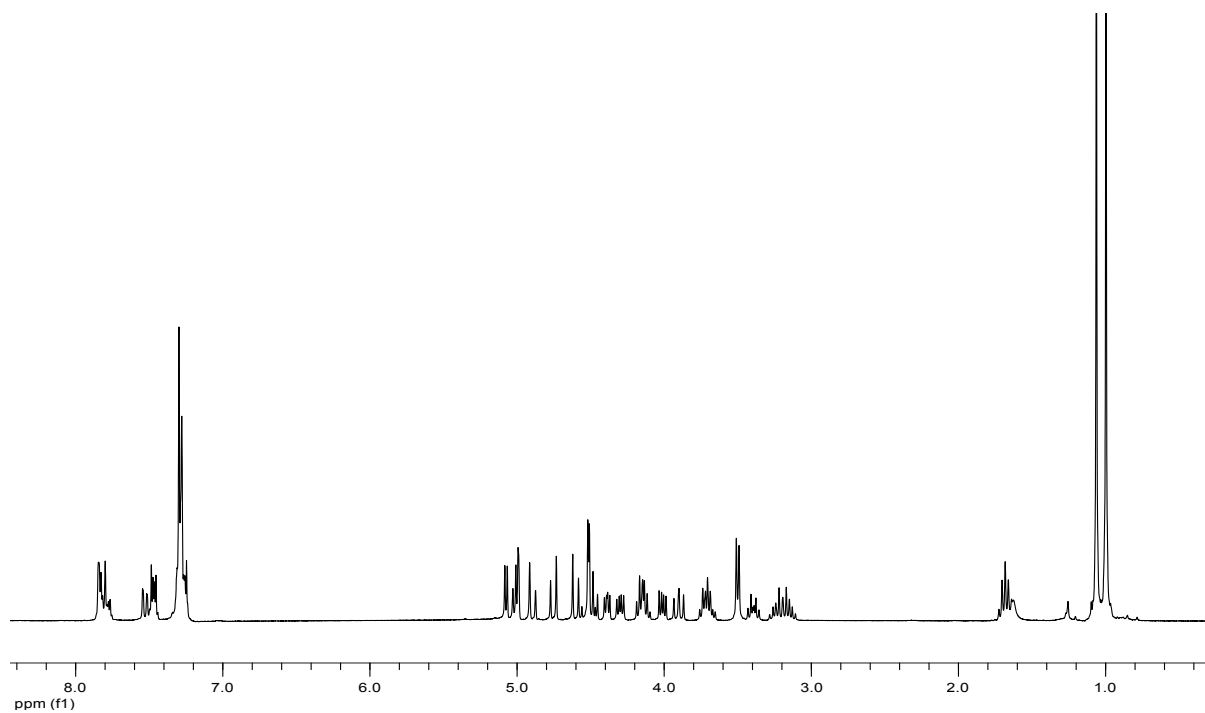
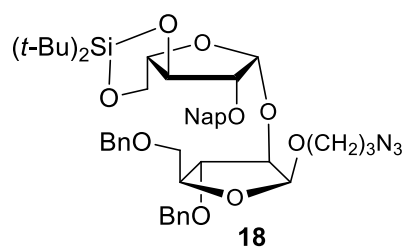
$\text{CDCl}_3$ , 75 MHz



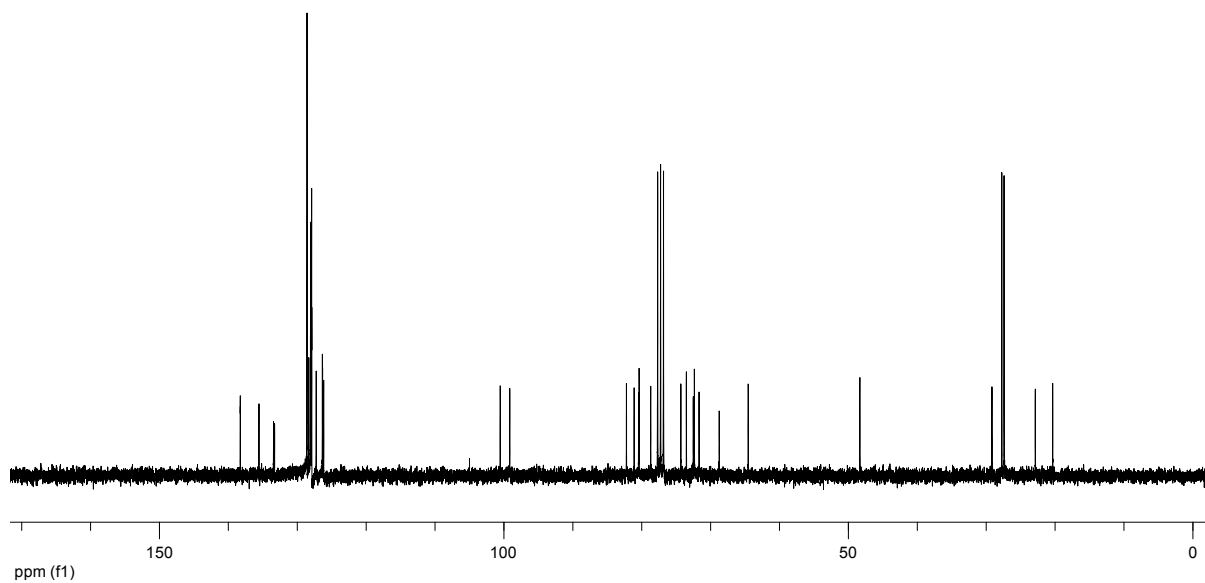
CDCl<sub>3</sub>, 300 MHz



CDCl<sub>3</sub>, 75 MHz

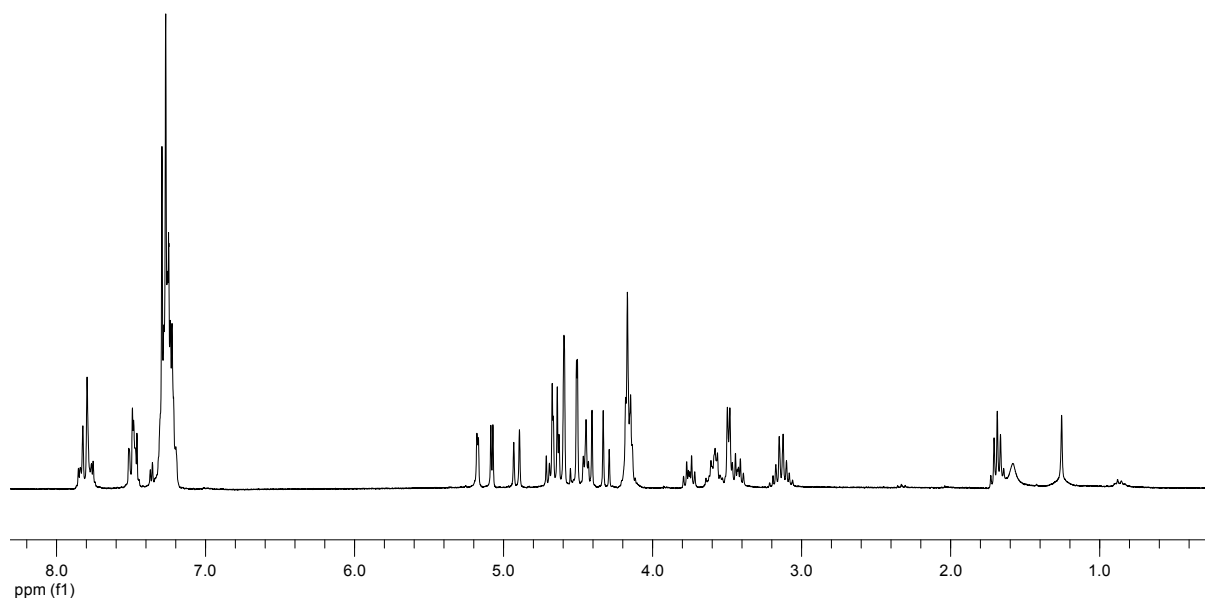
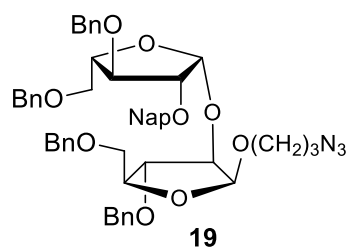


$\text{CDCl}_3$ , 300 MHz

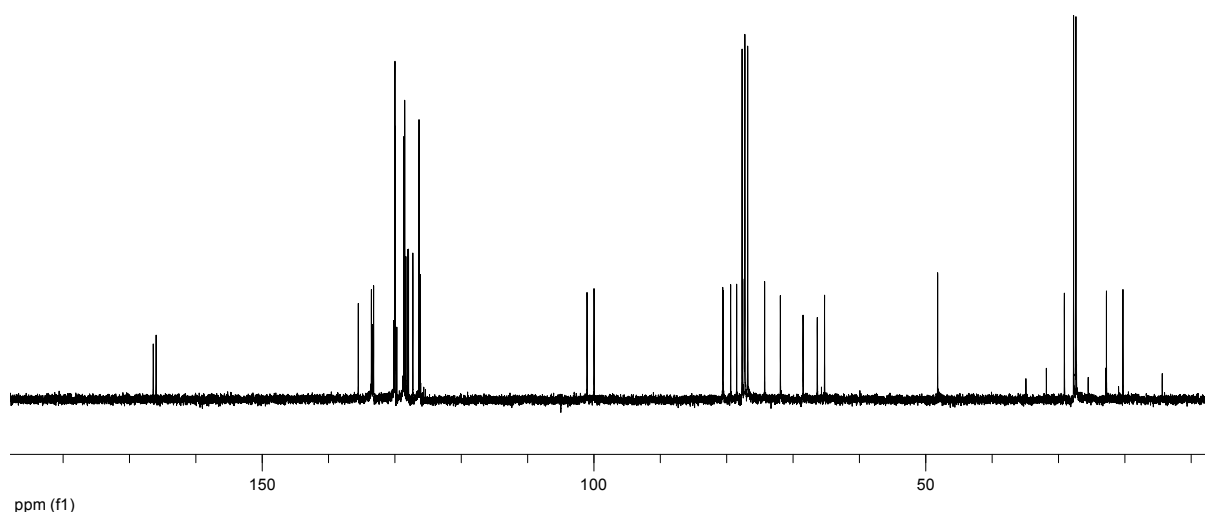


$\text{CDCl}_3$ , 75 MHz

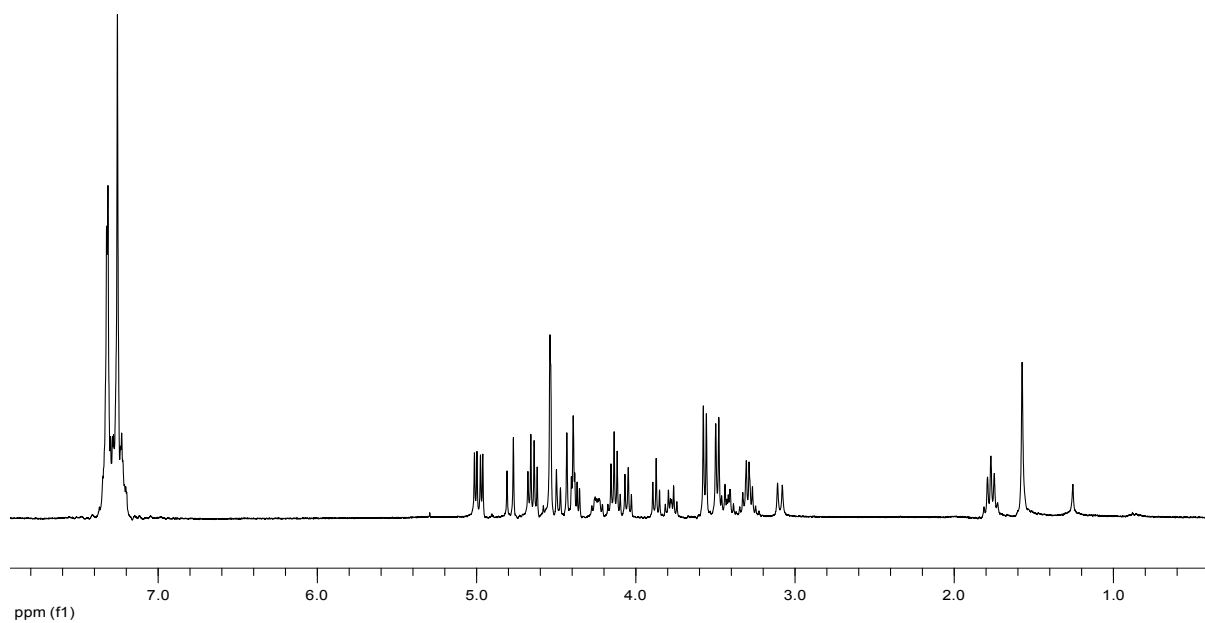
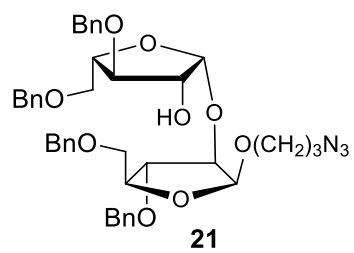




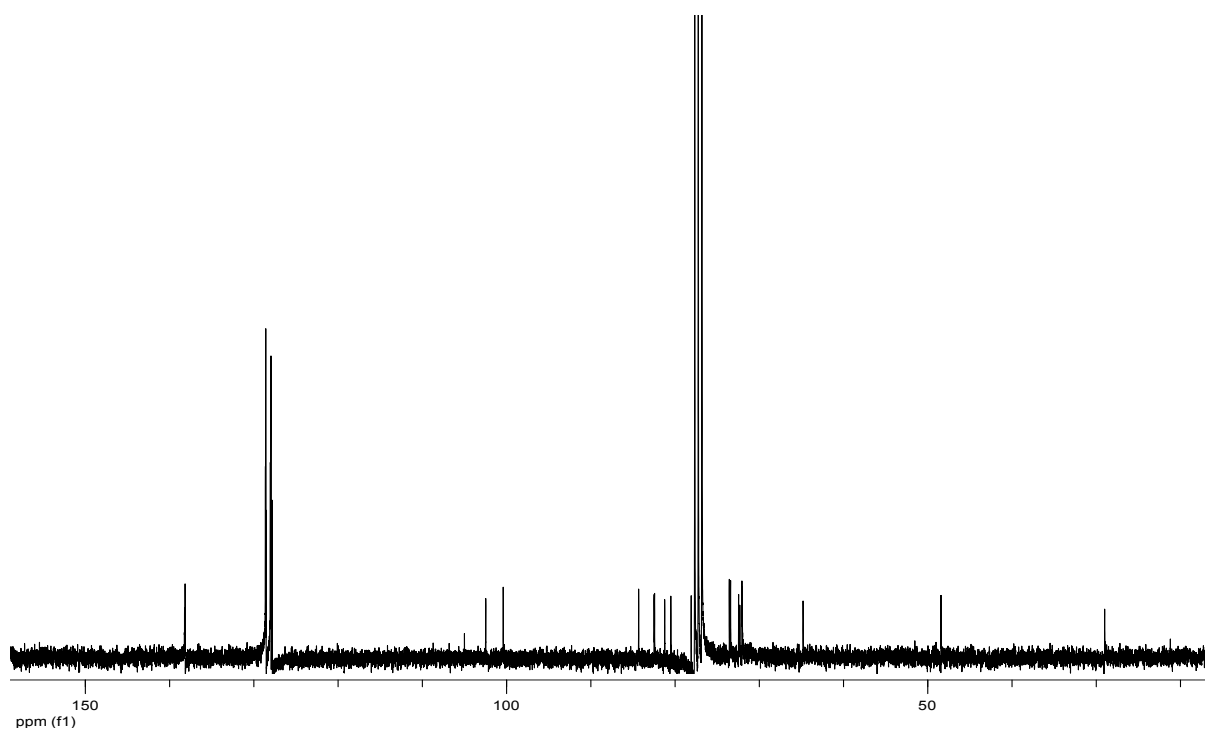
CDCl<sub>3</sub>, 300 MHz



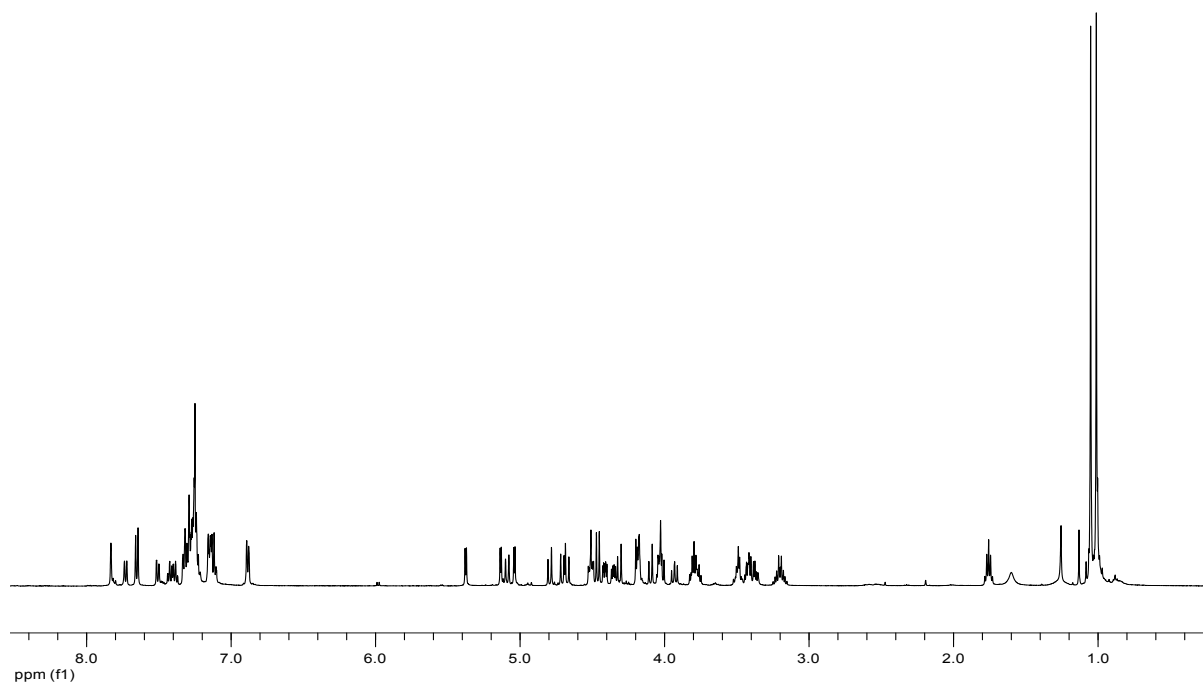
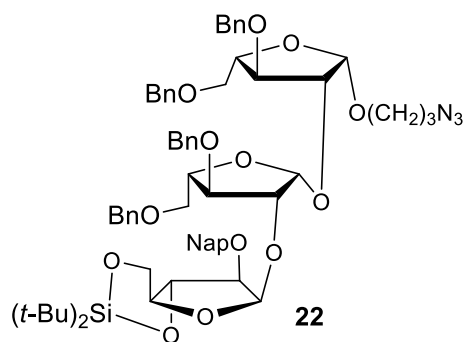
CDCl<sub>3</sub>, 75 MHz



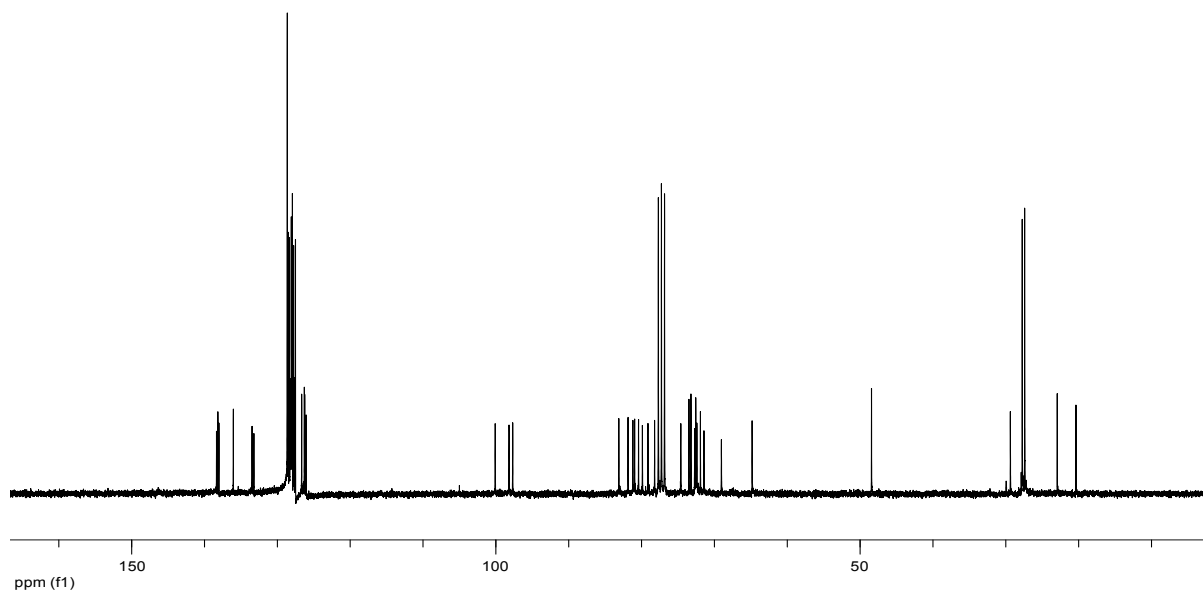
CDCl<sub>3</sub>, 300 MHz



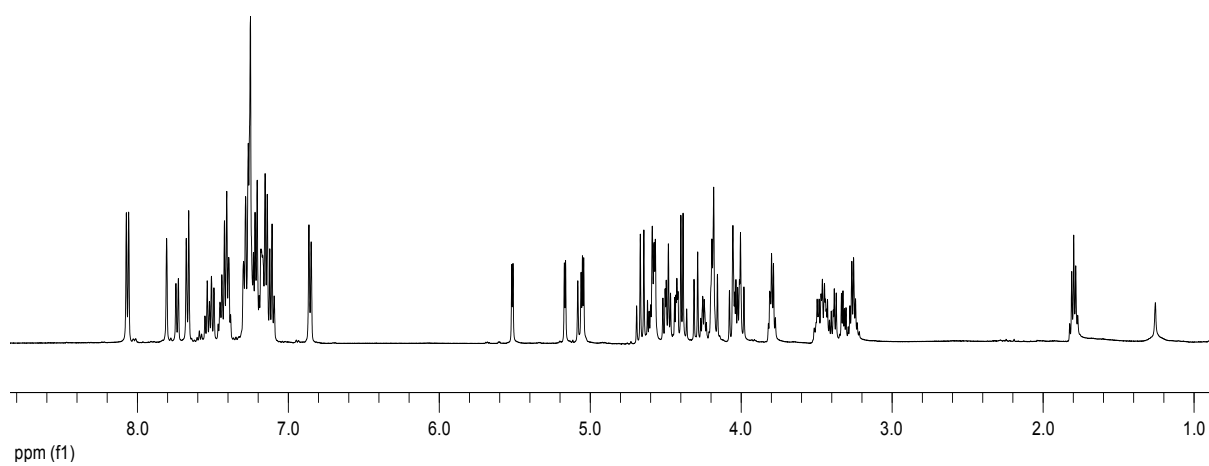
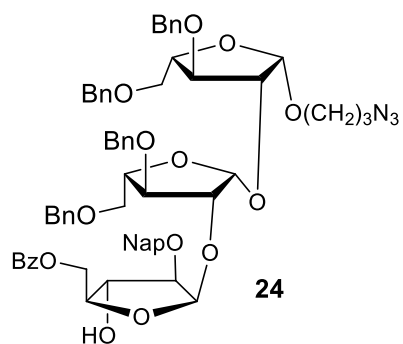
CDCl<sub>3</sub>, 75 MHz



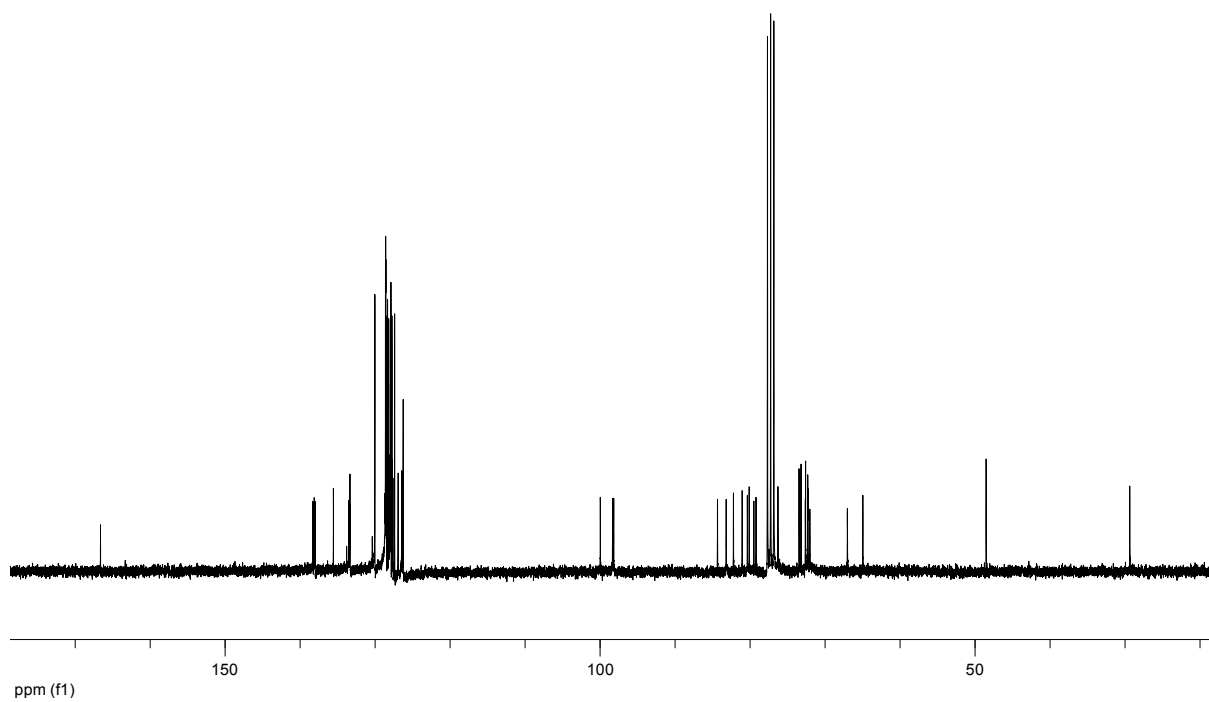
CDCl<sub>3</sub>, 500 MHz



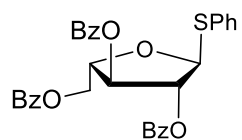
CDCl<sub>3</sub>, 75 MHz



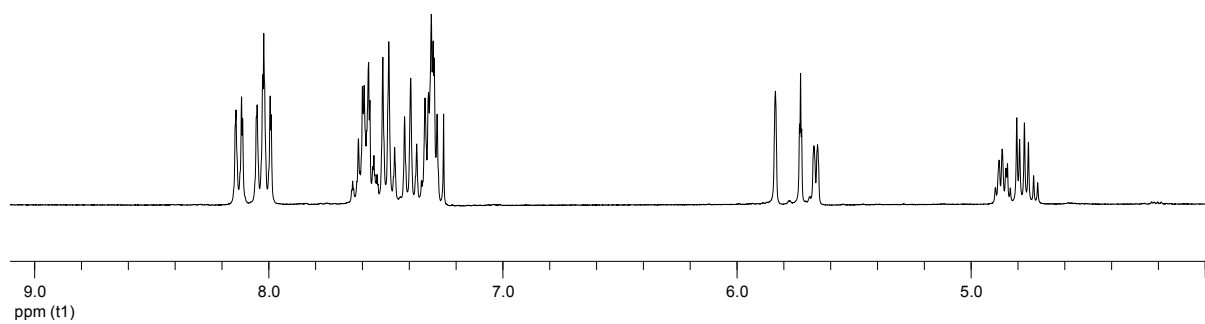
CDCl<sub>3</sub>, 500 MHz



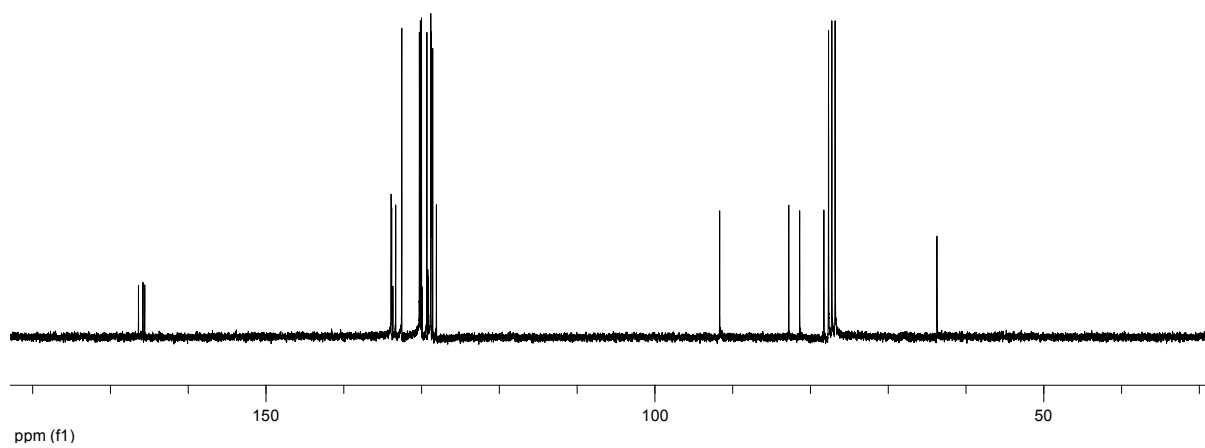
CDCl<sub>3</sub>, 75 MHz



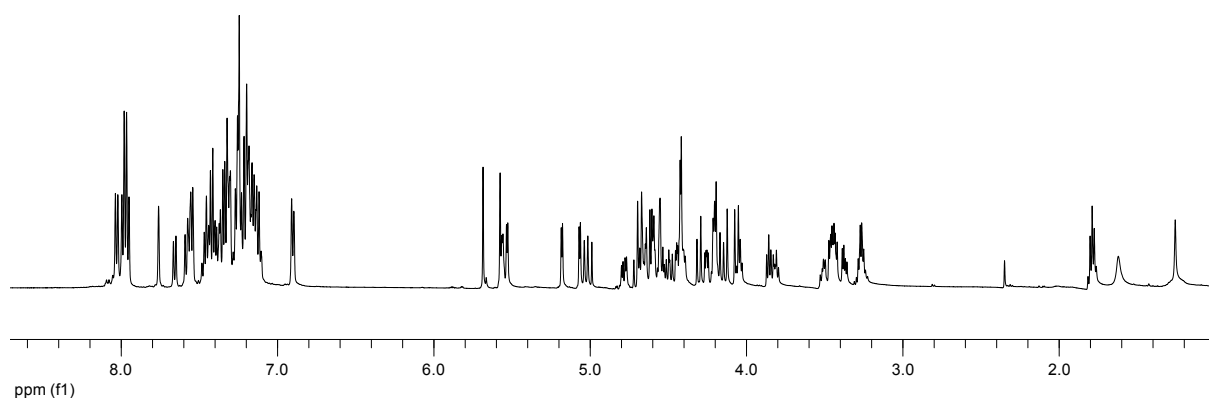
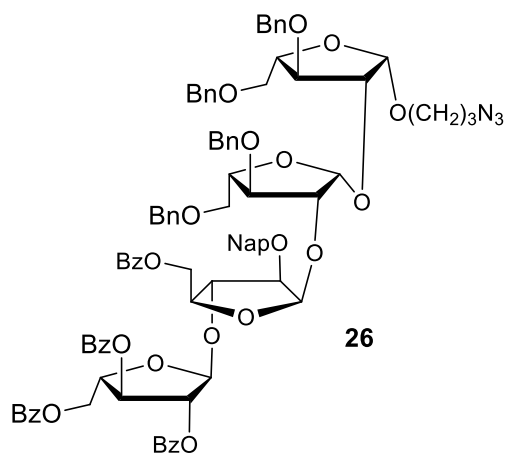
**25**



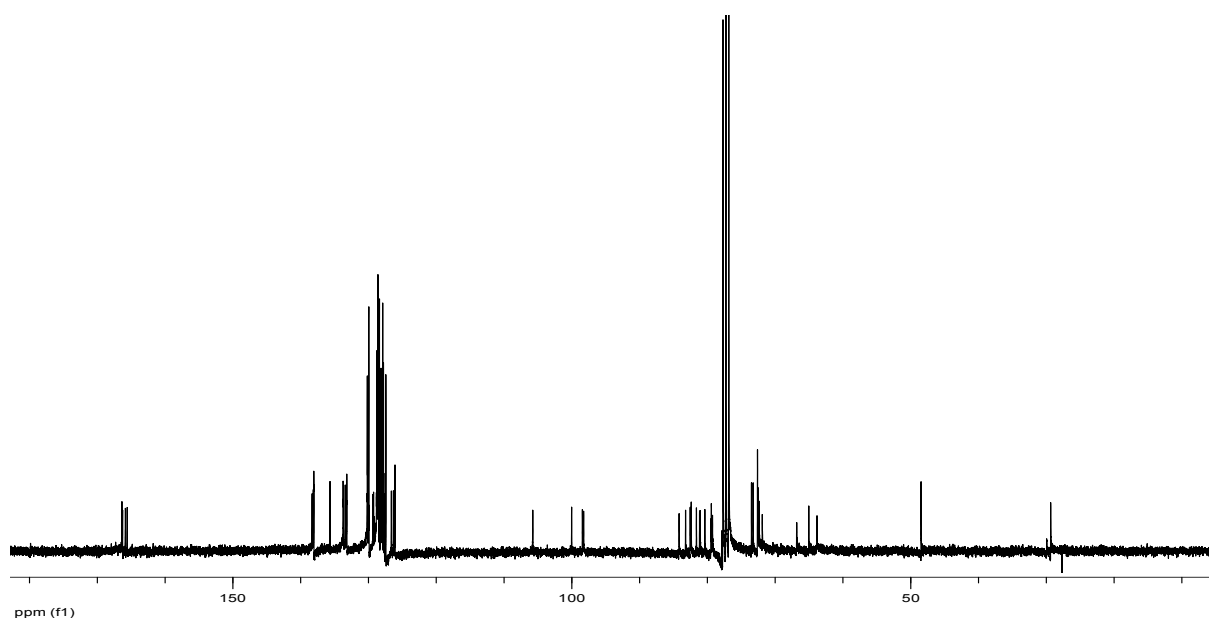
CDCl<sub>3</sub>, 300 MHz



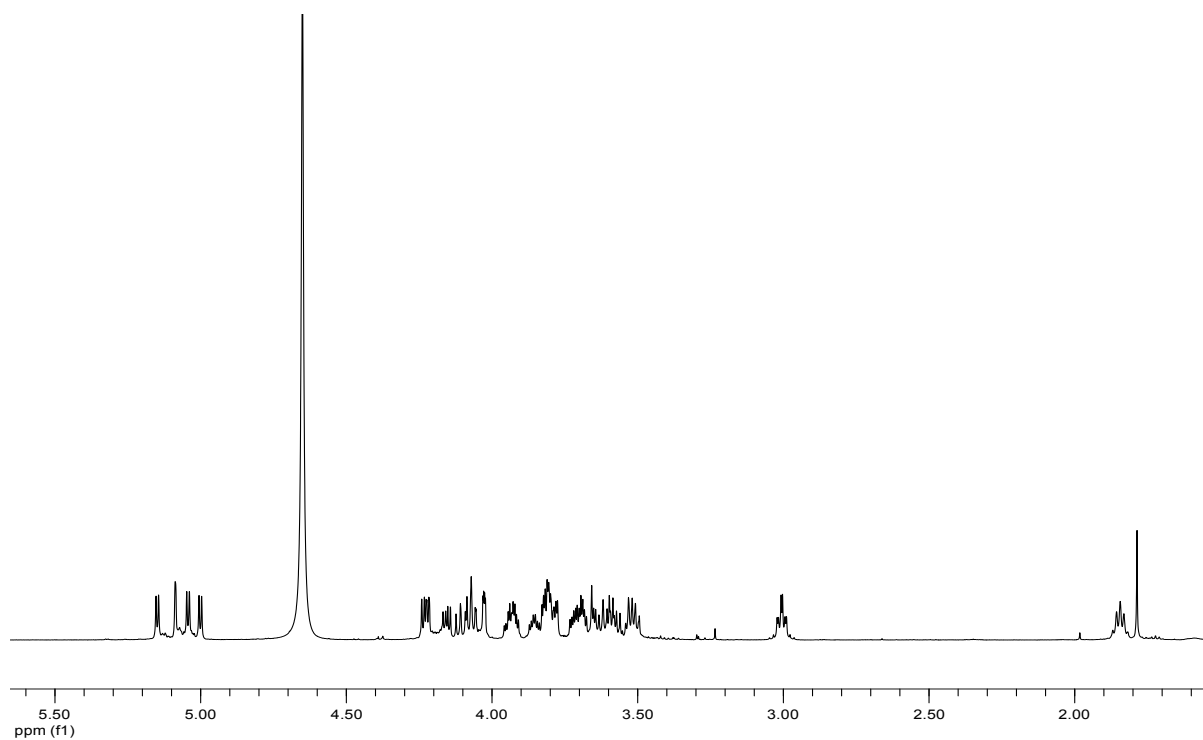
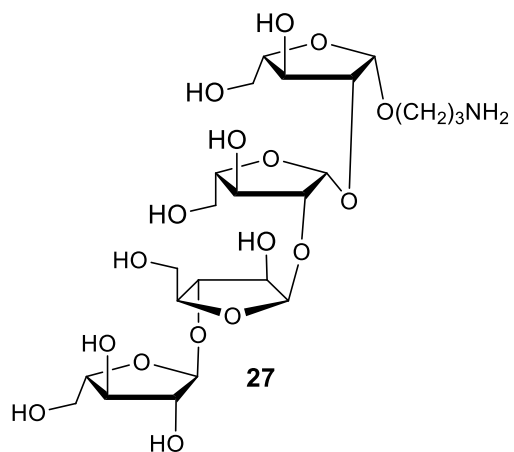
CDCl<sub>3</sub>, 75 MHz



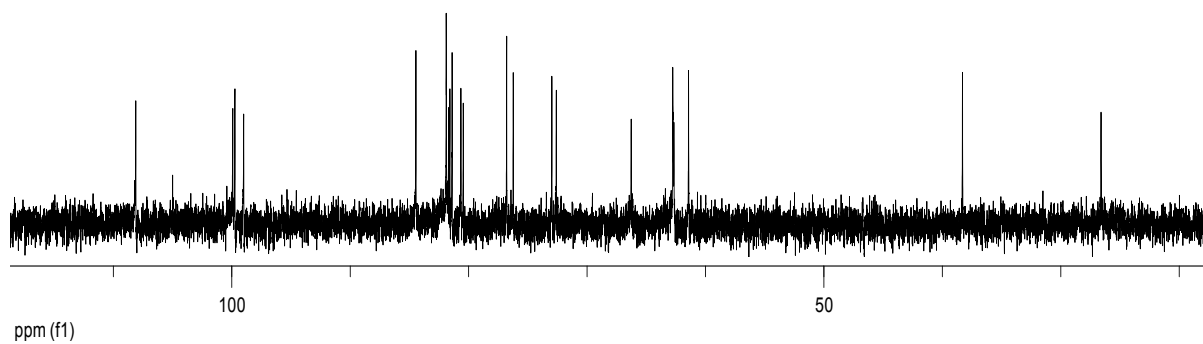
CDCl<sub>3</sub>, 500 MHz



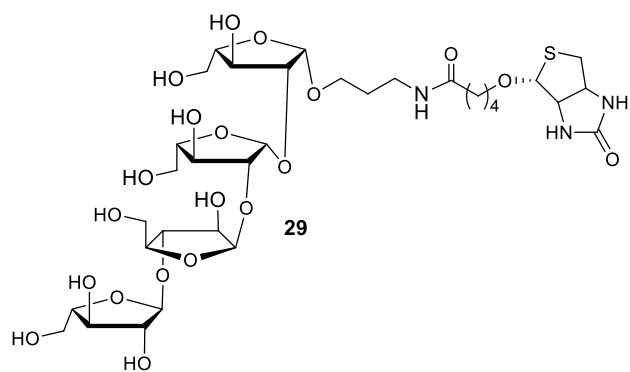
CDCl<sub>3</sub>, 75 MHz



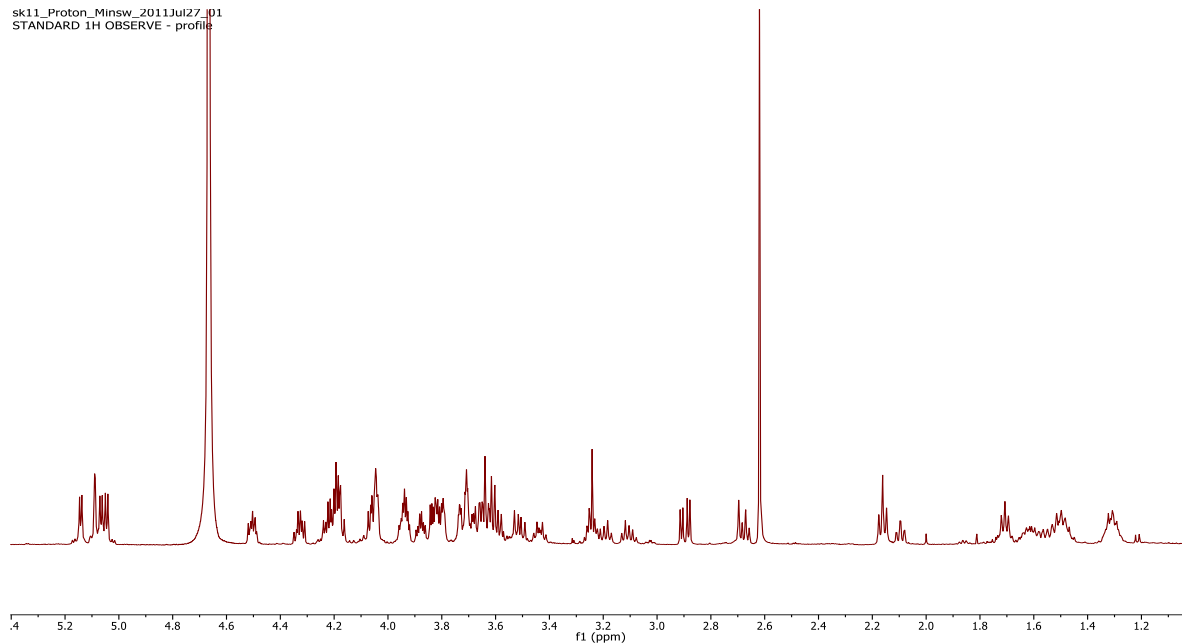
$\text{D}_2\text{O}$ , 500 MHz



$\text{D}_2\text{O}$ , 75 MHz



sk11\_Proton\_Minsw\_2011Jul27\_01  
STANDARD 1H OBSERVE - profile

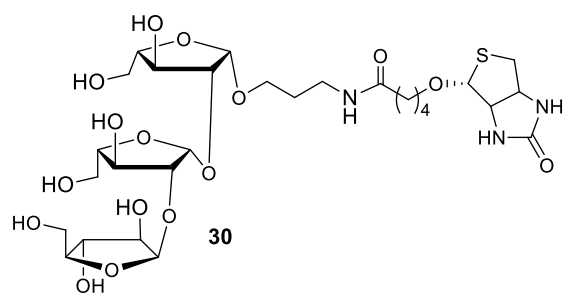


sk11\_Ghsqc\_2011Jul27\_01  
tetrasaccharide binds to biotin  
tetrasaccharide binds to biotin

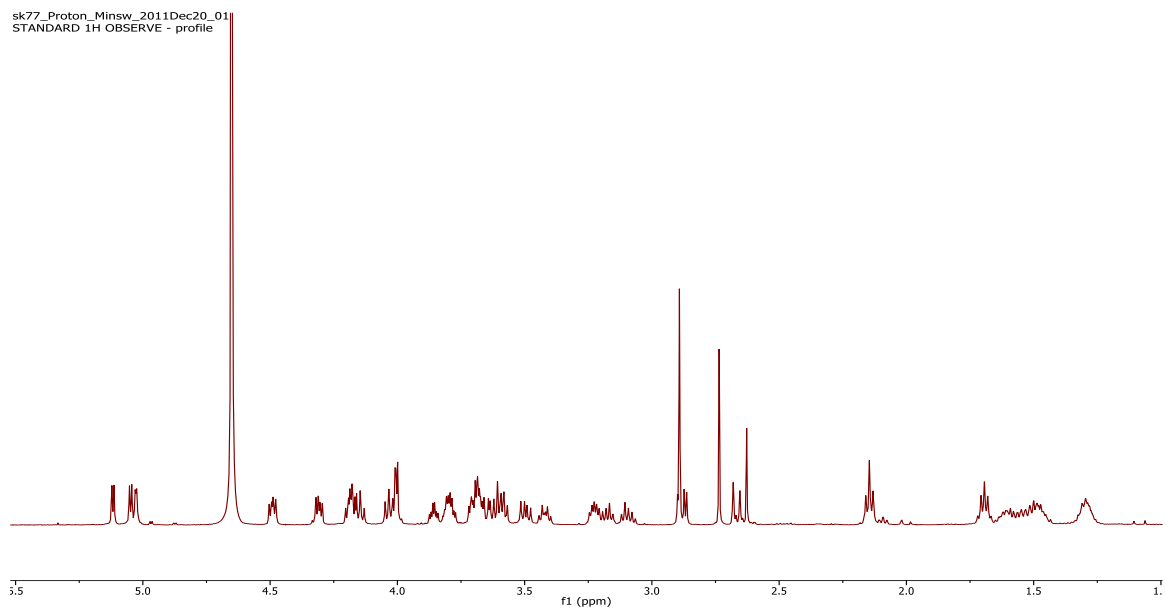


D<sub>2</sub>O, 500 MHz

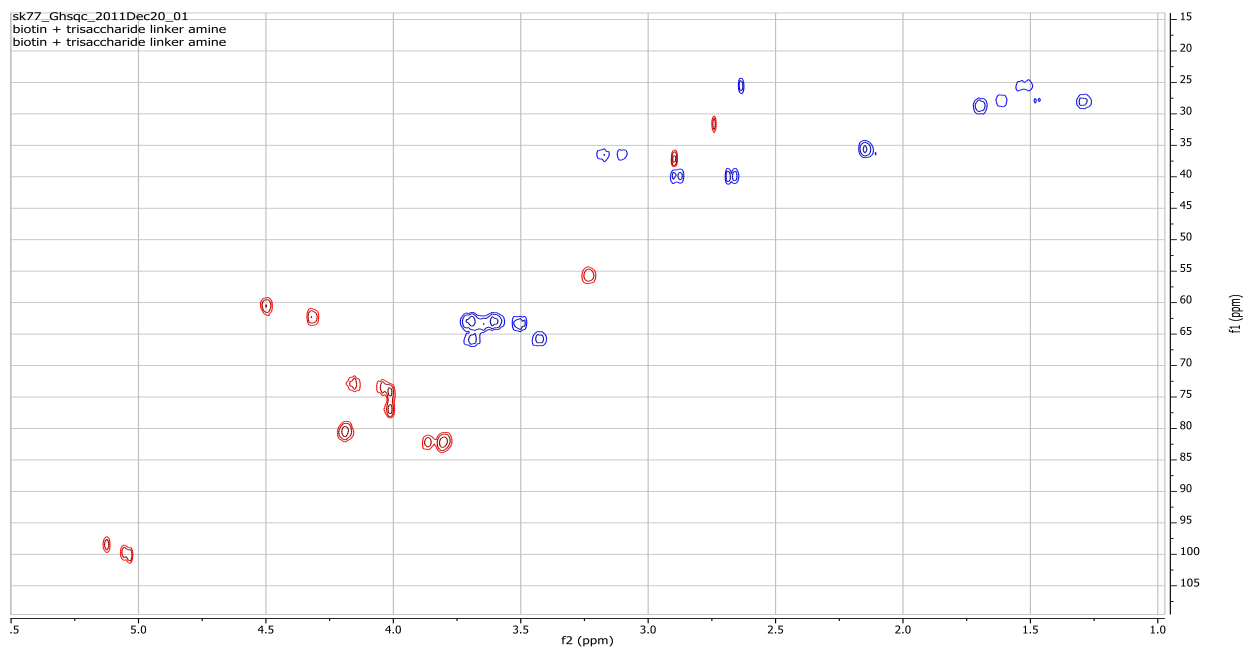




sk77\_Proton\_Minsw\_2011Dec20\_01  
STANDARD 1H OBSERVE - profile



sk77\_Ghsqc\_2011Dec20\_01  
biotin + trisaccharide linker amine  
biotin + trisaccharide linker amine



D<sub>2</sub>O, 500 MHz