

Supplementary Material (ESI) for Organic and Biomolecular Chemistry
This journal is © The Royal Society of Chemistry 2013

Electronic Supporting Information (ESI) for:

Enantioselective Total Synthesis of

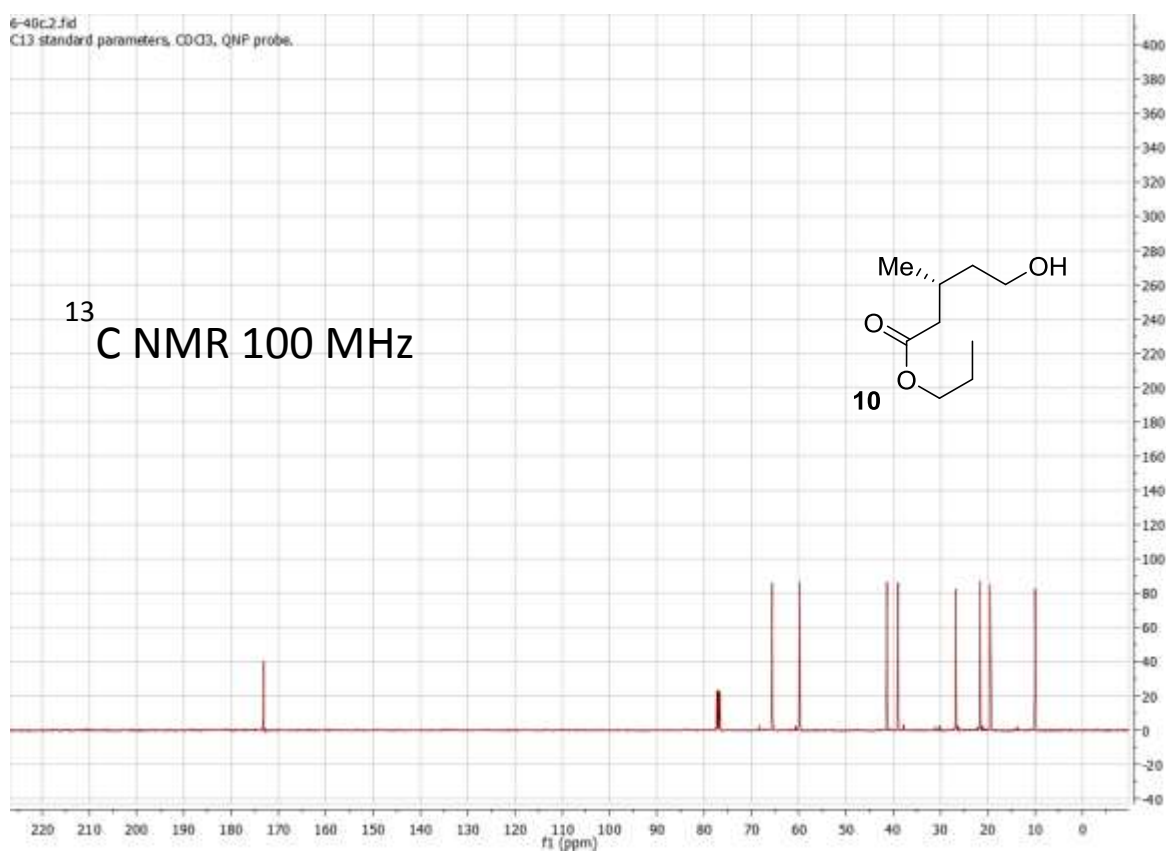
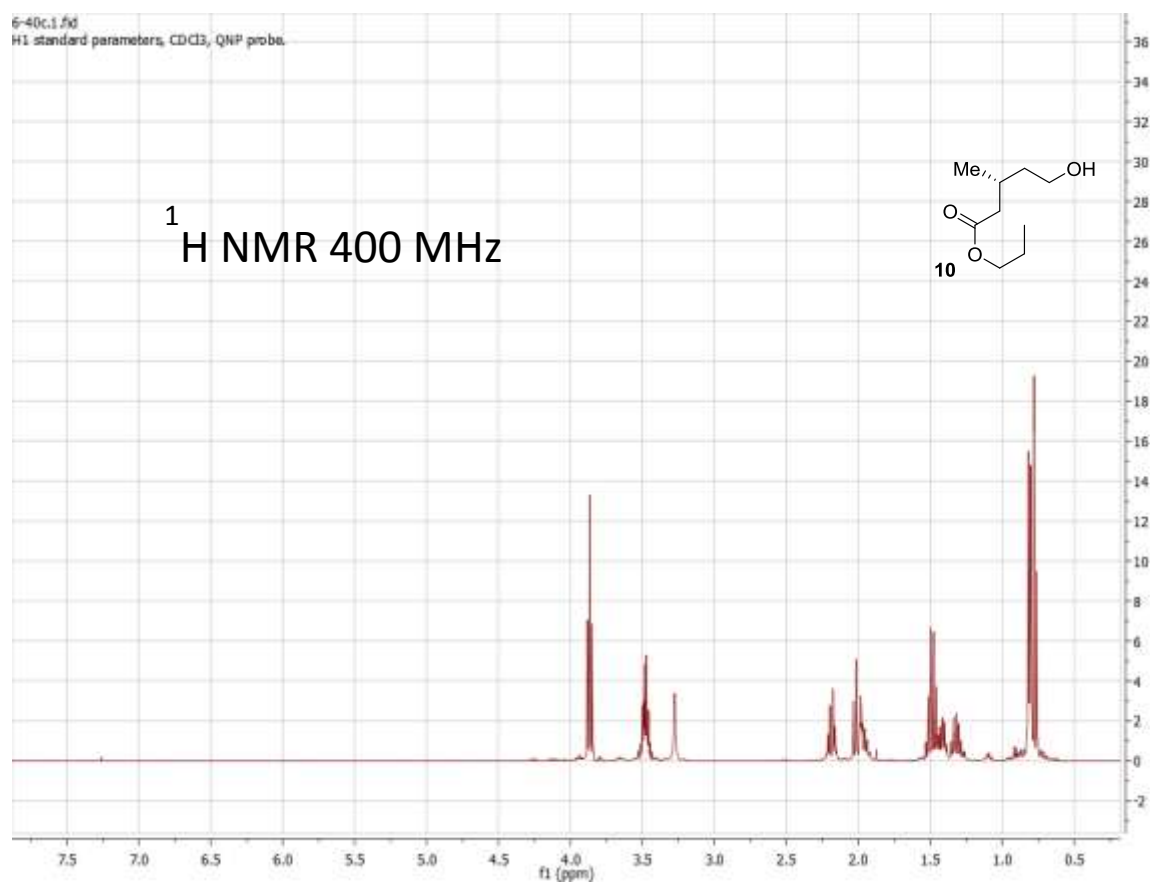
Macrolide (+)-Neopeltolide

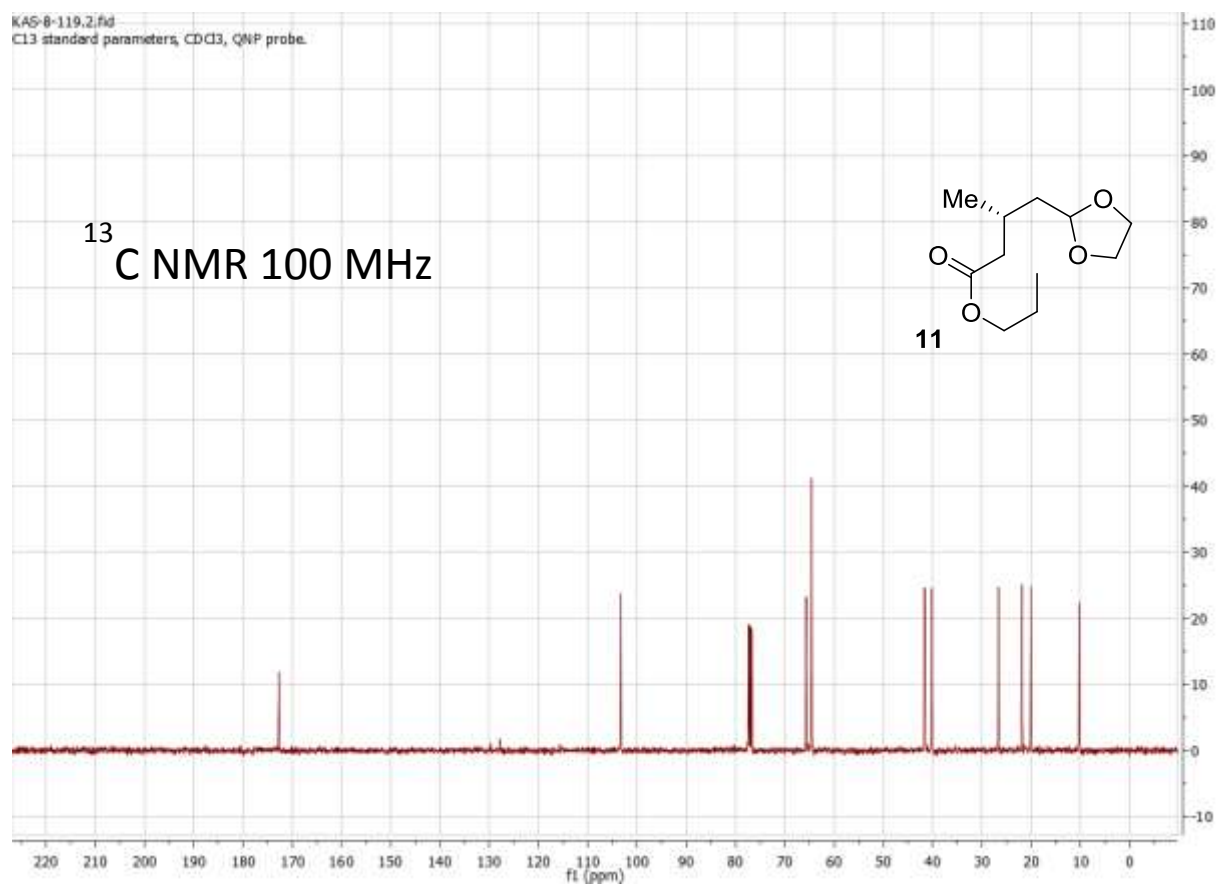
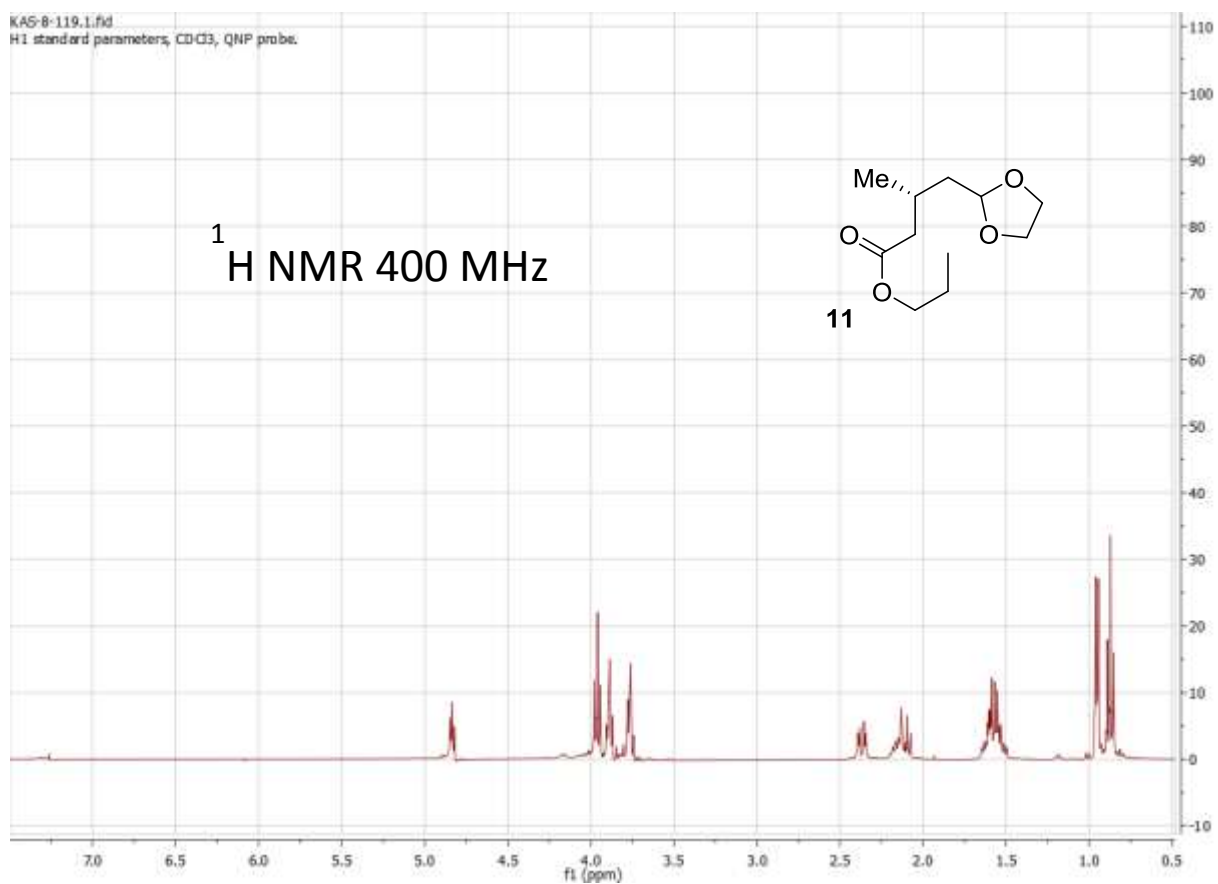
Arun K. Ghosh,^{} Khriesto Shurrush, and Zach Dawson*

Departments of Chemistry and Medicinal Chemistry, Purdue University, West Lafayette, IN

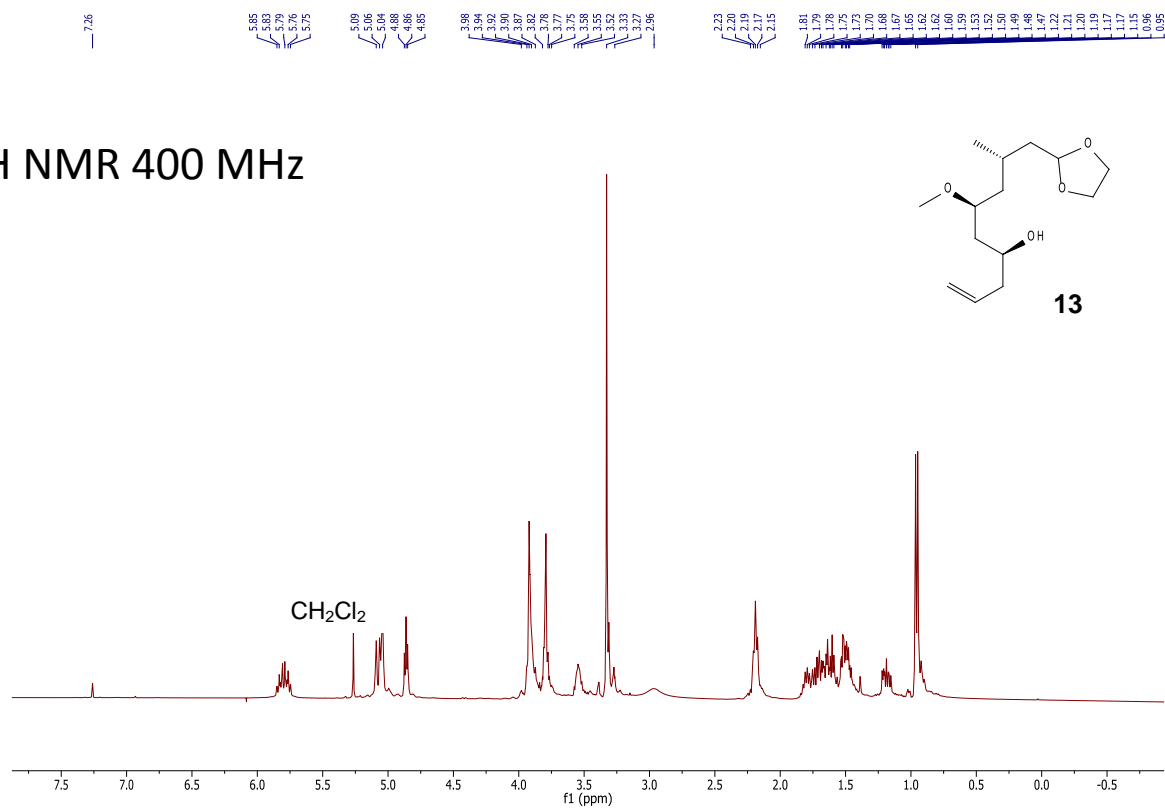
47907

Contents	Page
¹ H NMR and ¹³ C NMR Spectra	S2 – S16

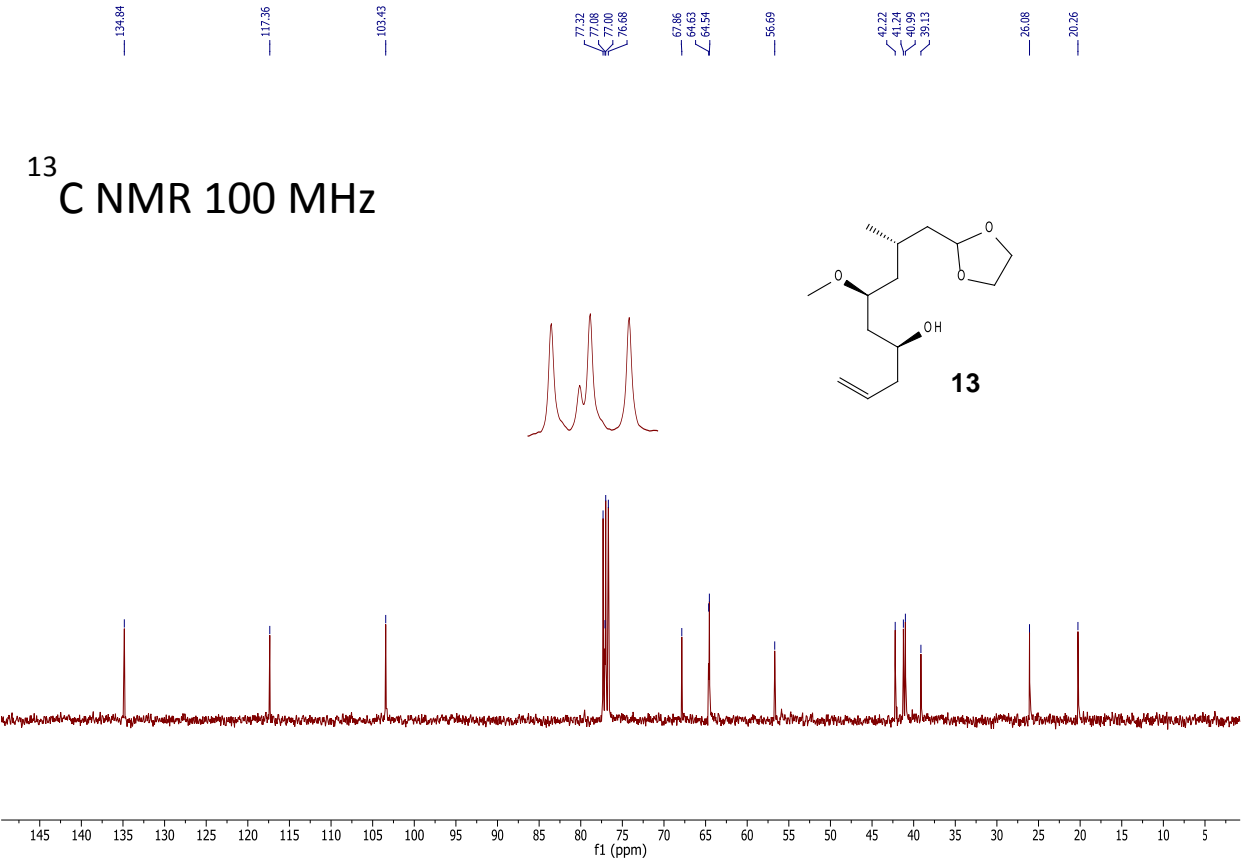




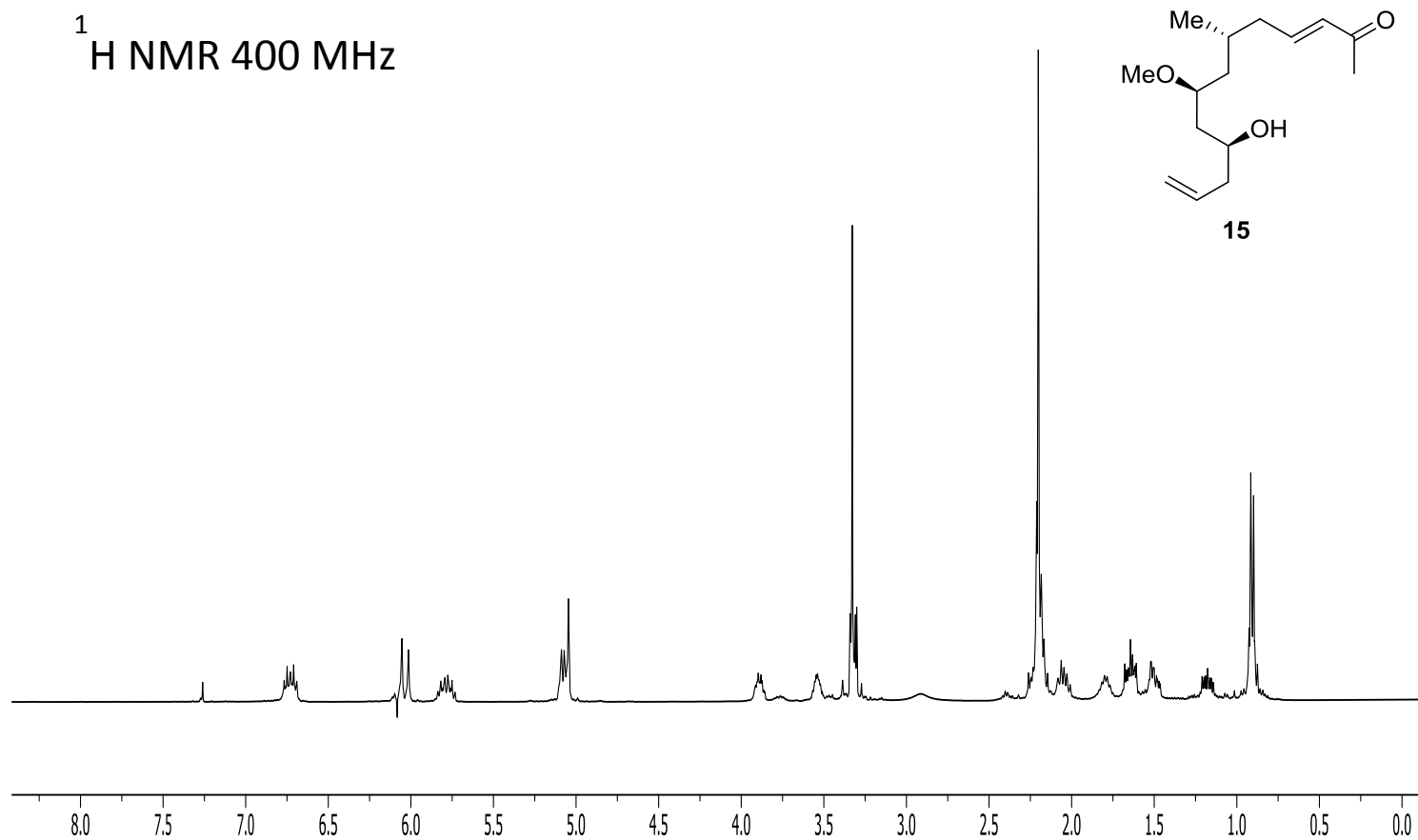
¹H NMR 400 MHz



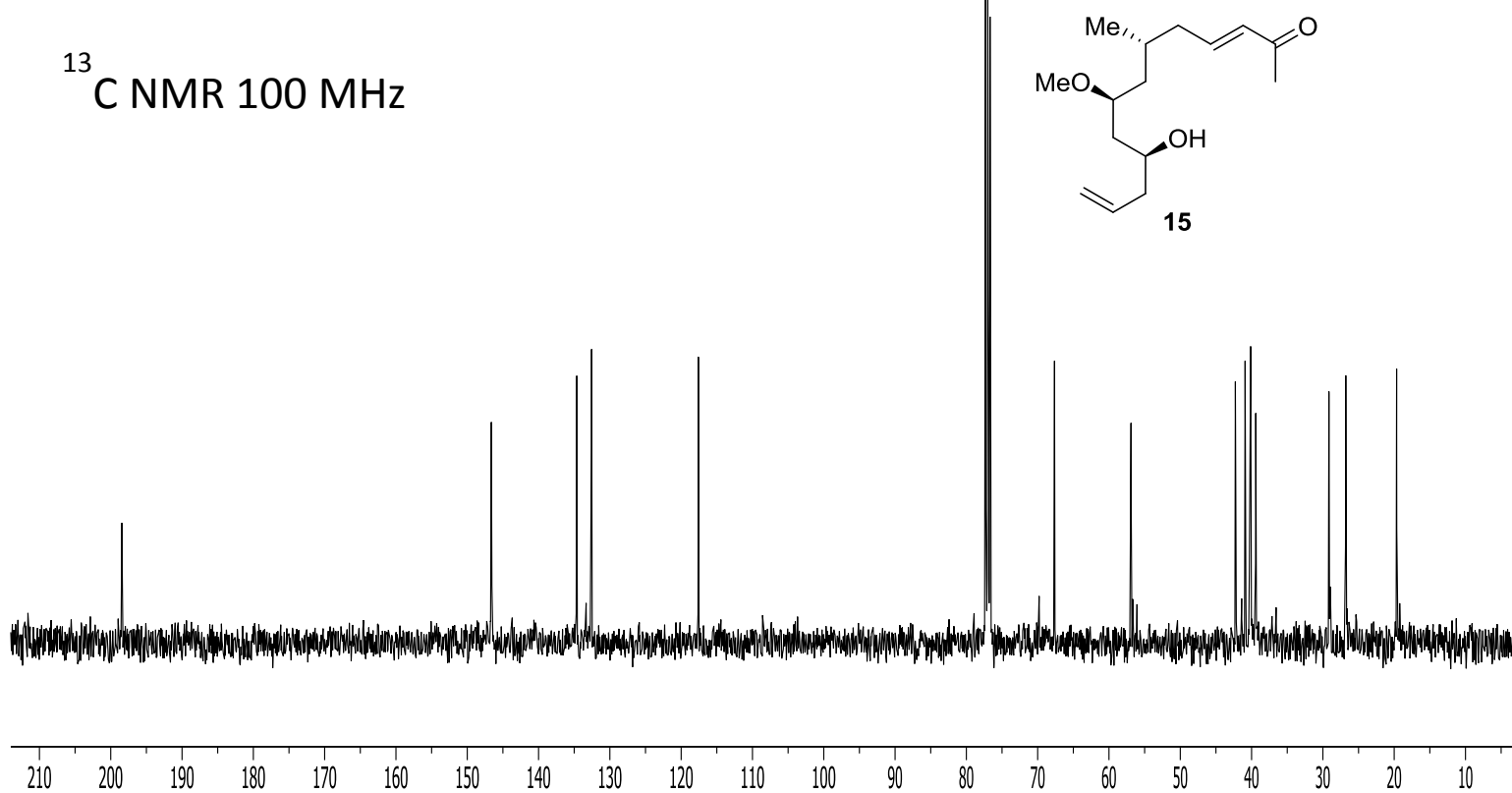
¹³C NMR 100 MHz



¹H NMR 400 MHz

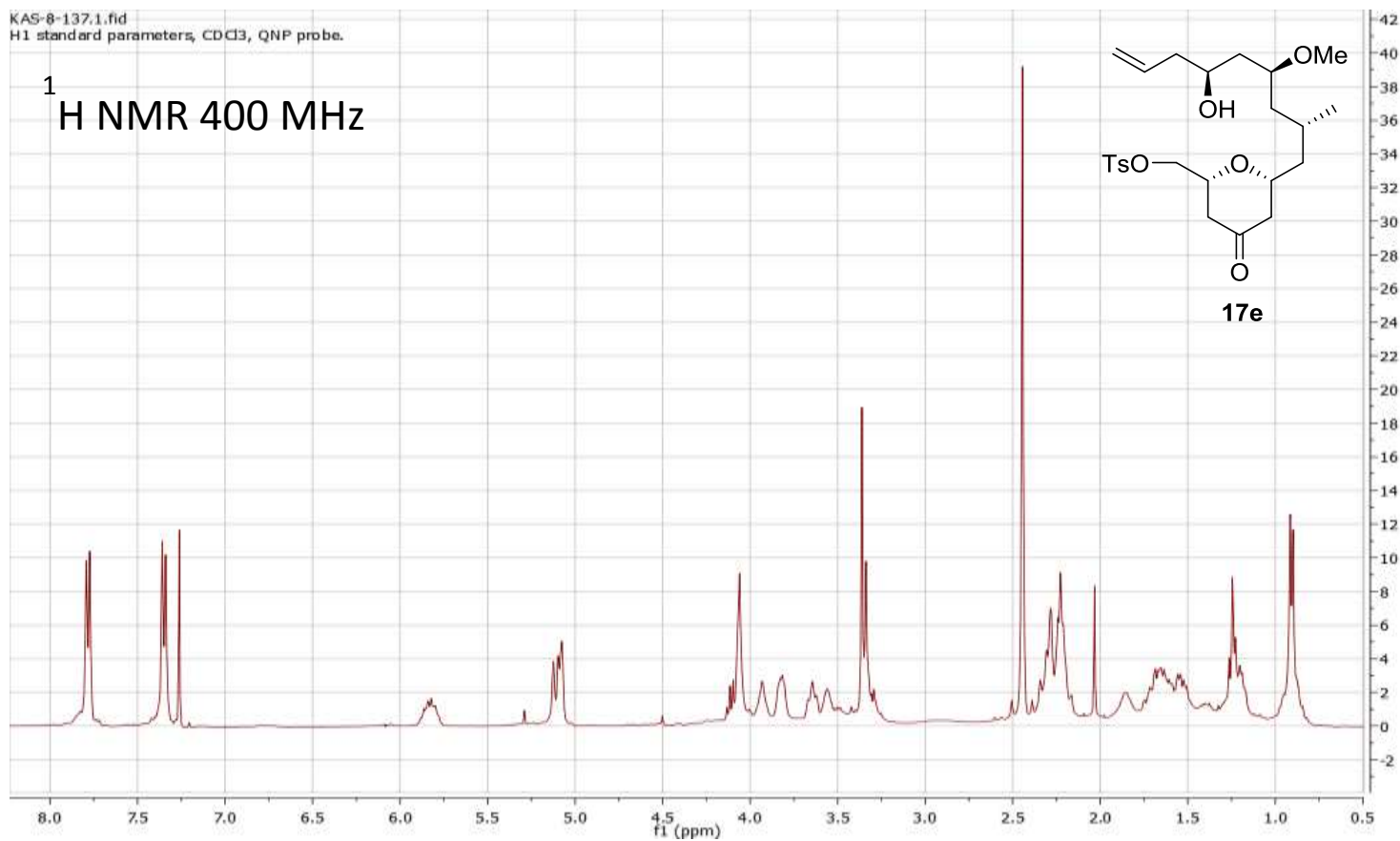


¹³C NMR 100 MHz



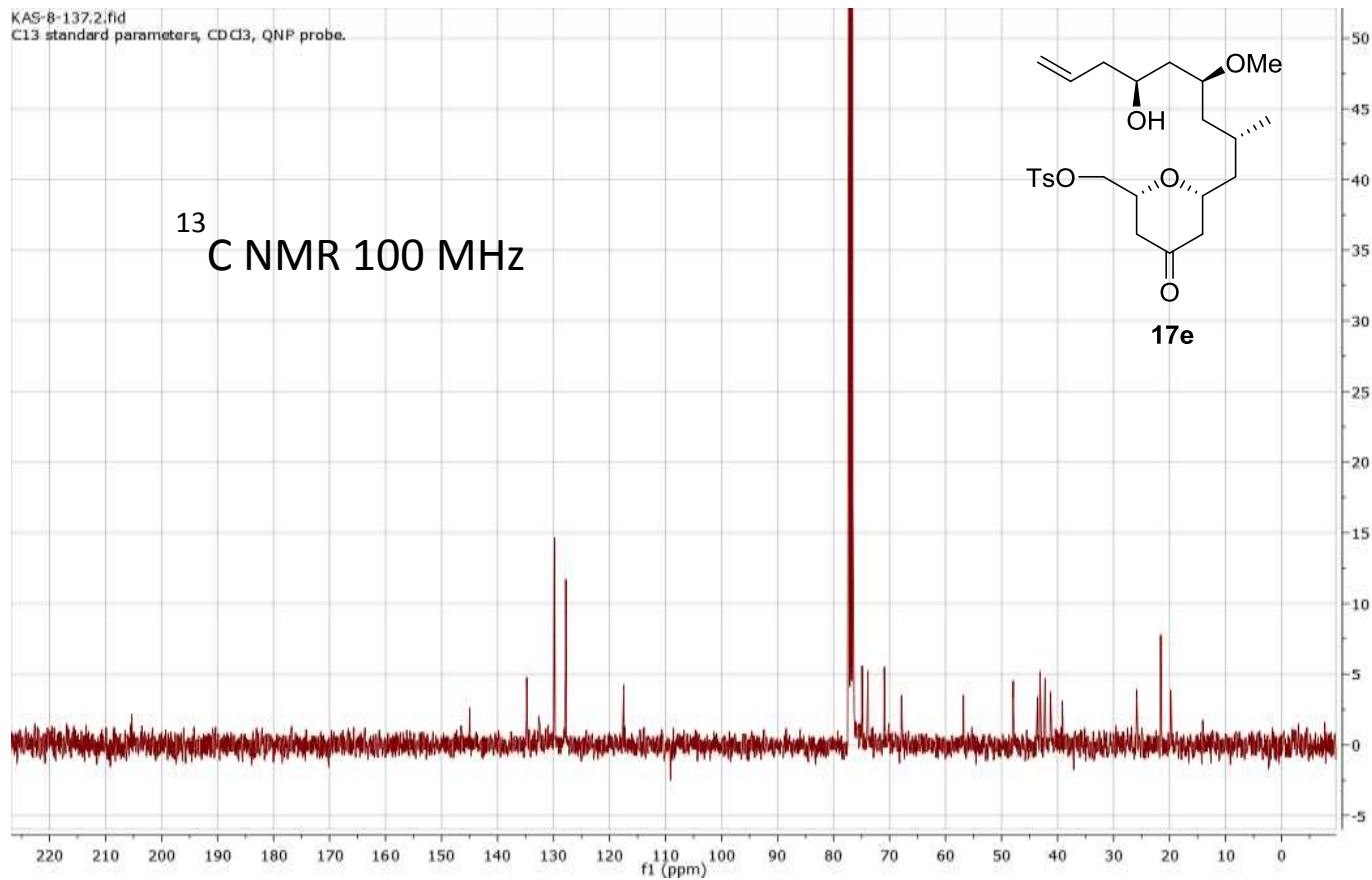
KAS-8-137.1.fid
H1 standard parameters, CDCl₃, QNP probe.

¹H NMR 400 MHz

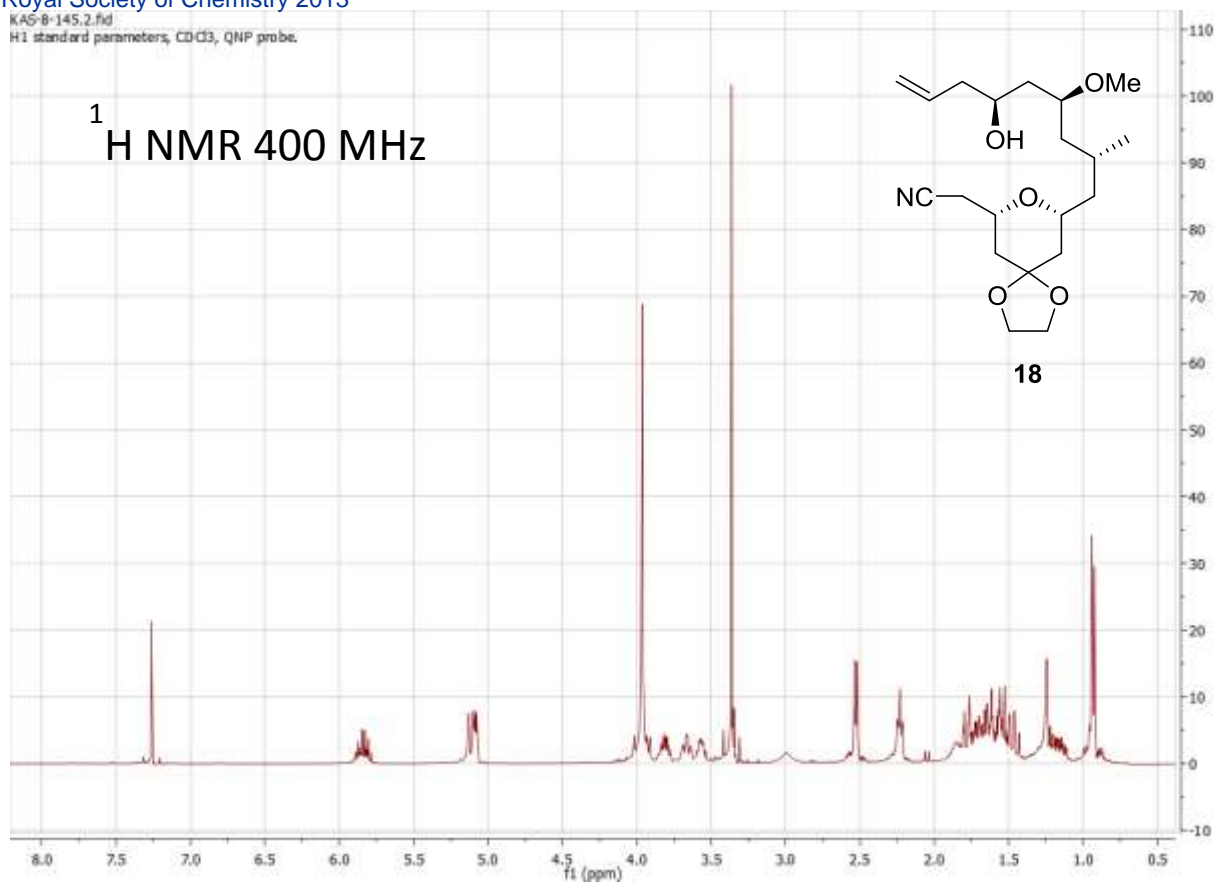


KAS-8-137.2.fid
C13 standard parameters, CDCl₃, QNP probe.

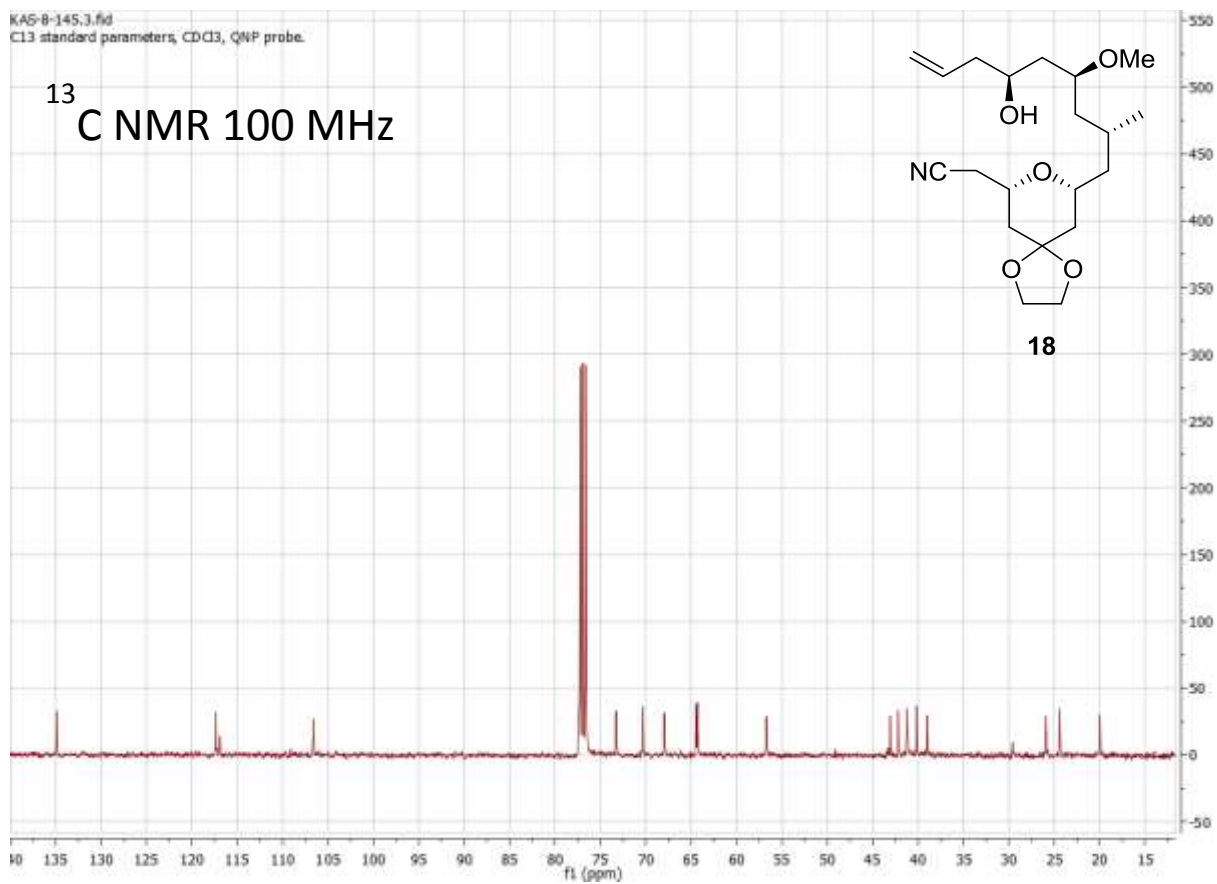
¹³C NMR 100 MHz



KAS-8-145.2.fid
 H1 standard parameters, CDCl₃, QNP probe.

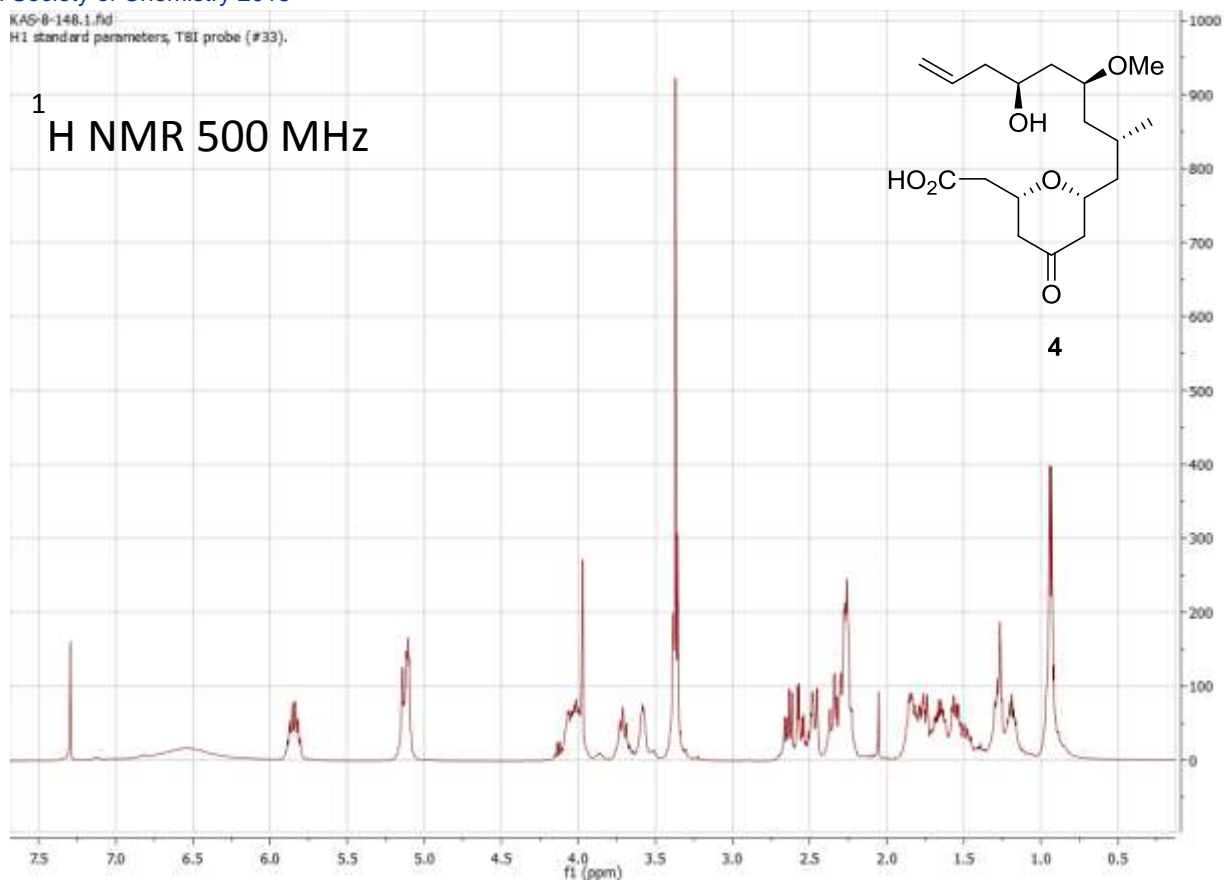


KAS-8-145.3.fid
 C13 standard parameters, CDCl₃, QNP probe.



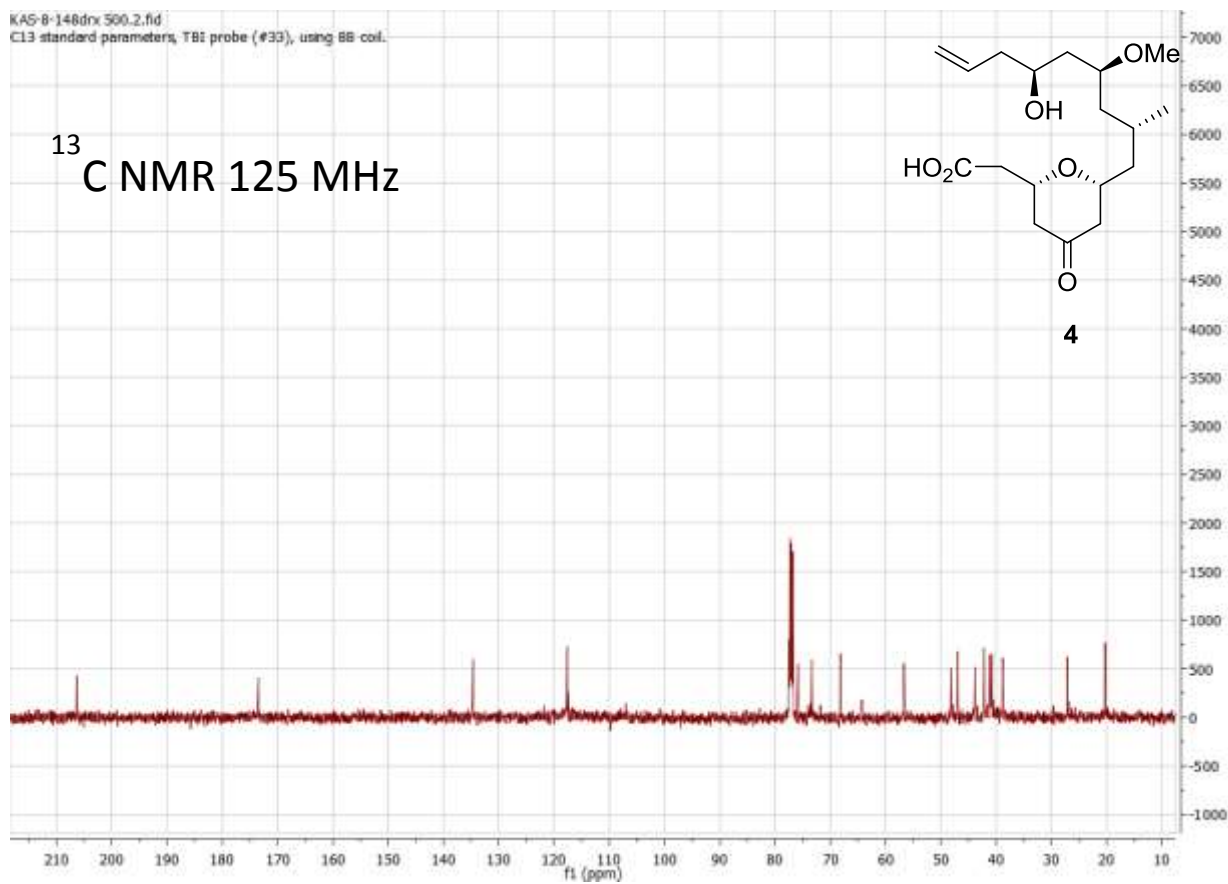
KAS-8-148.1.fid
H1 standard parameters, TBI probe (#33).

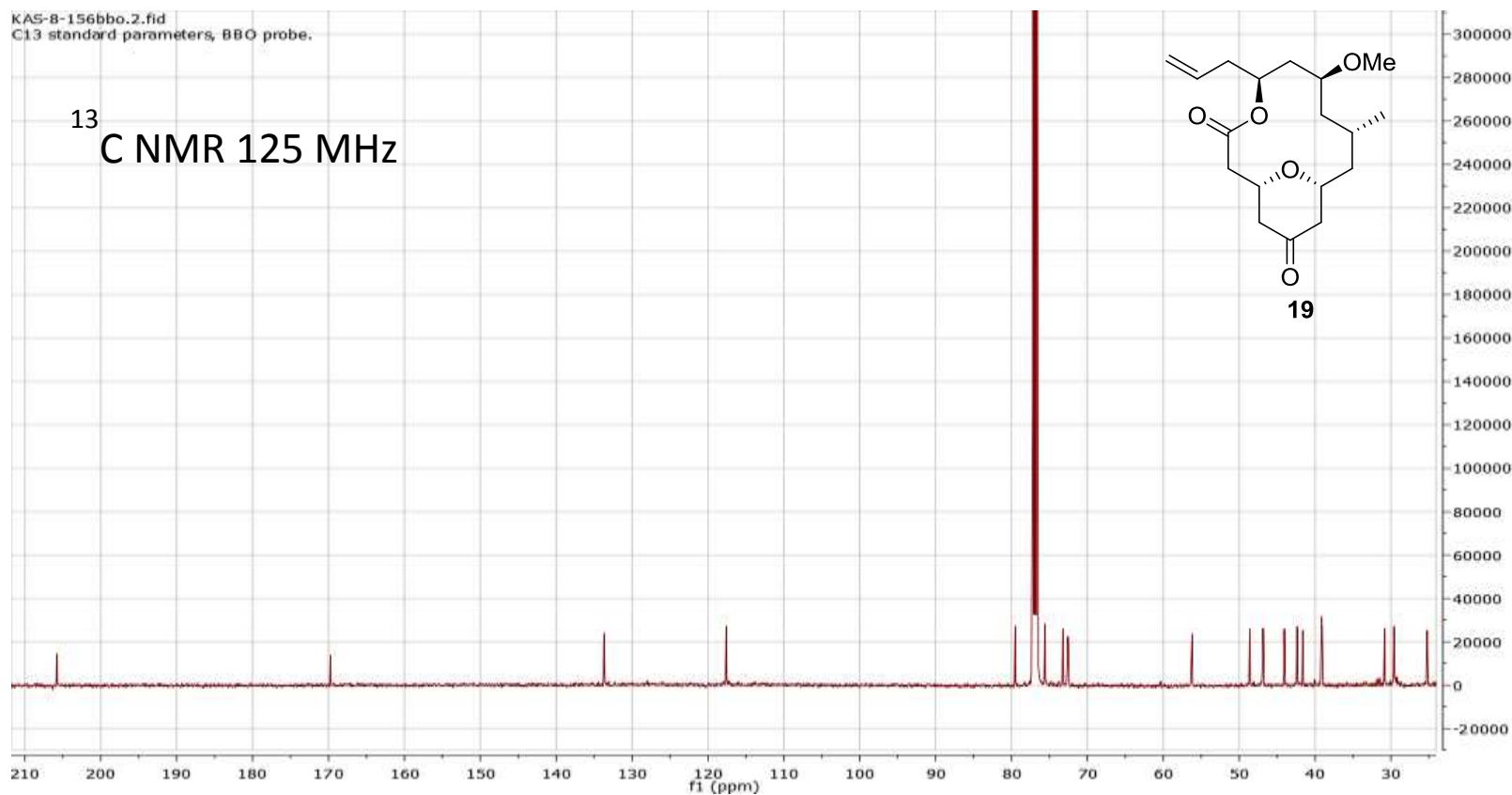
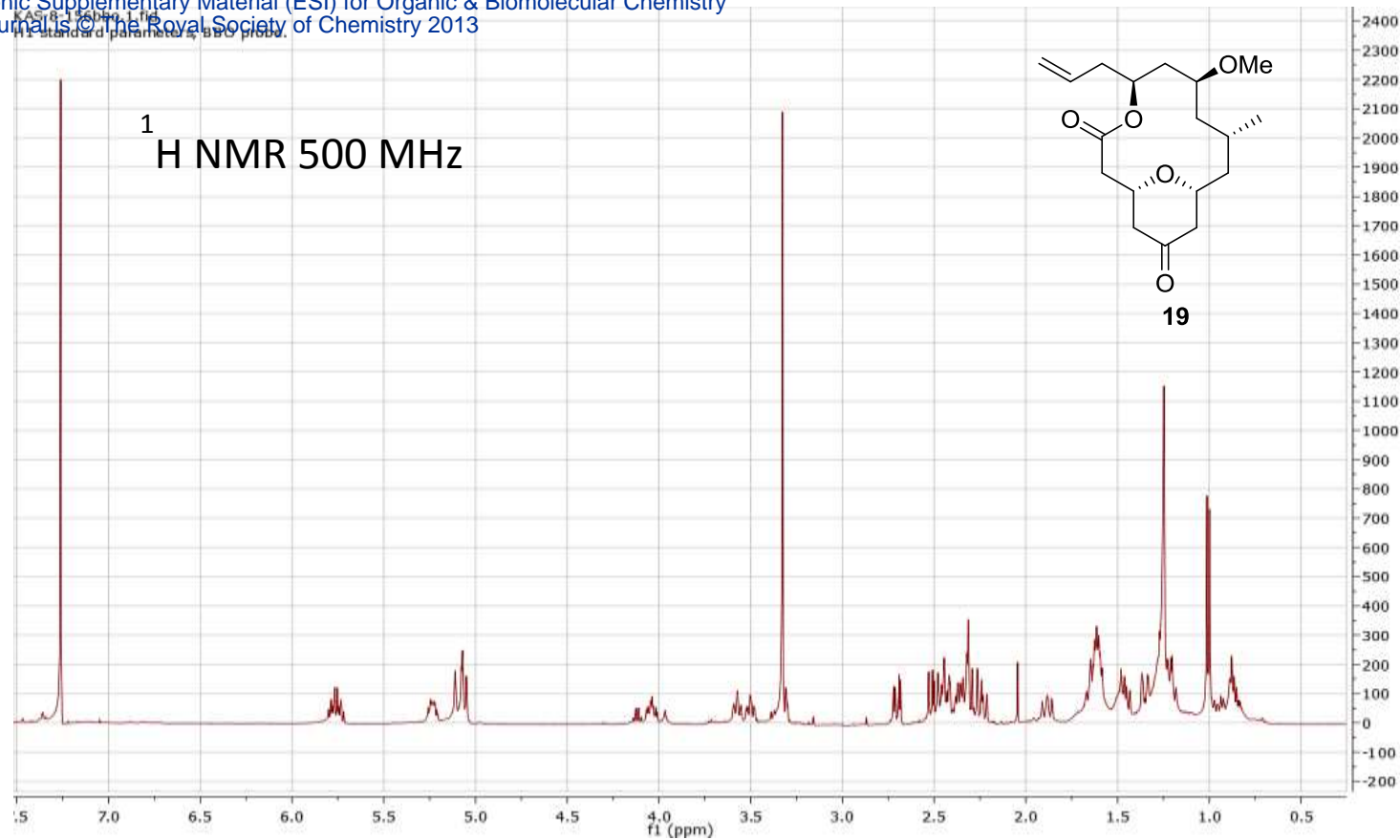
¹H NMR 500 MHz



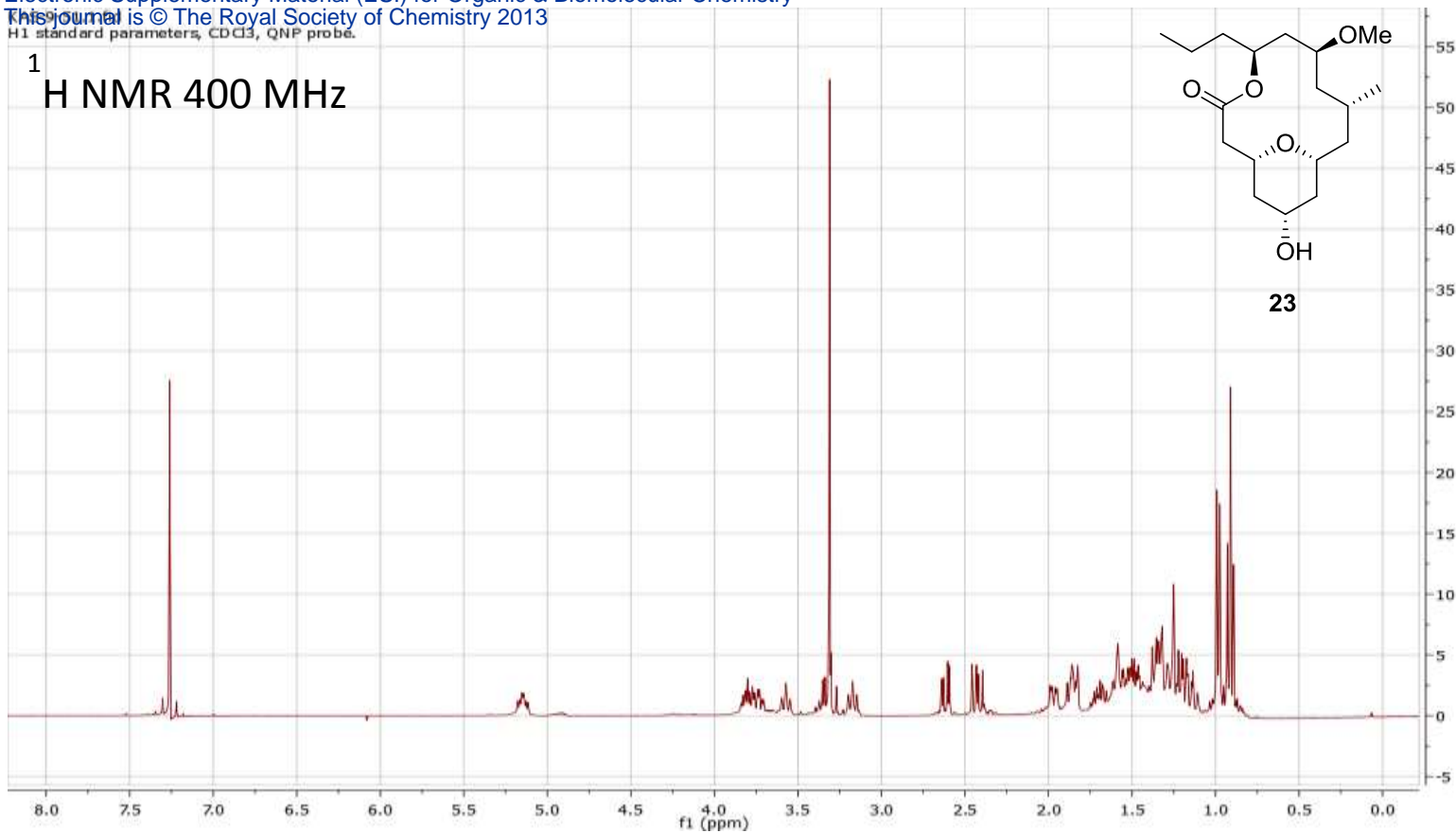
KAS-8-148dix 500.2.fid
C13 standard parameters, TBI probe (#33), using BB coil.

¹³C NMR 125 MHz



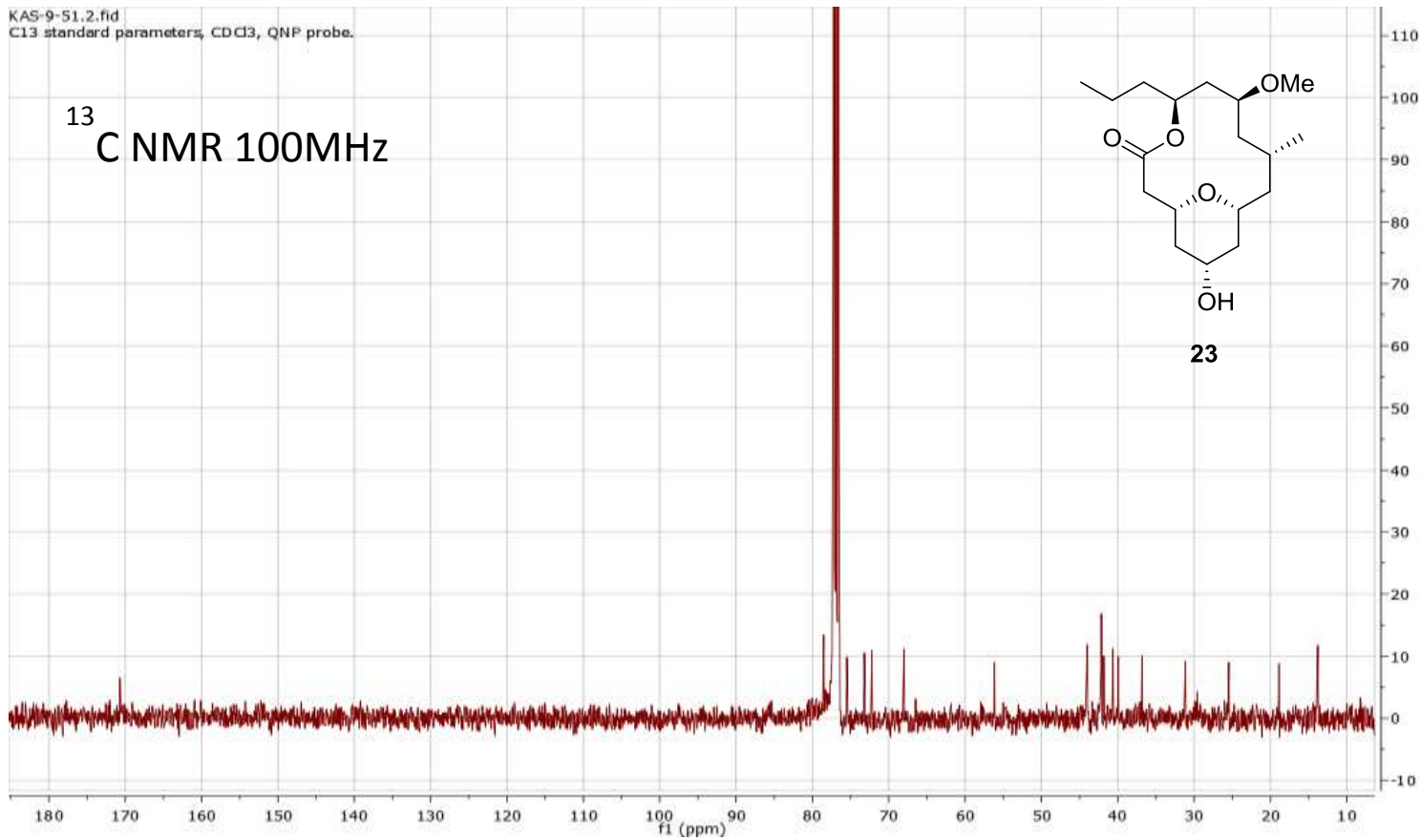


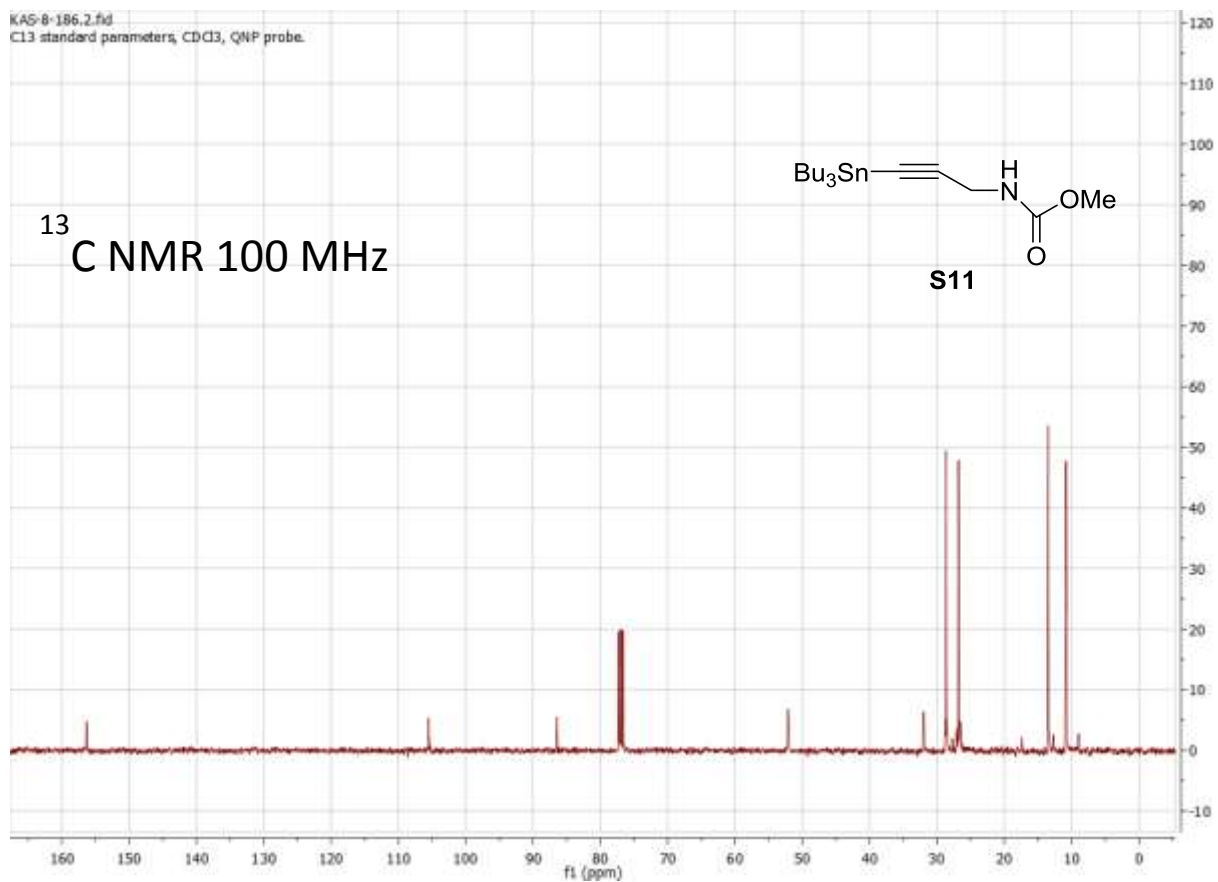
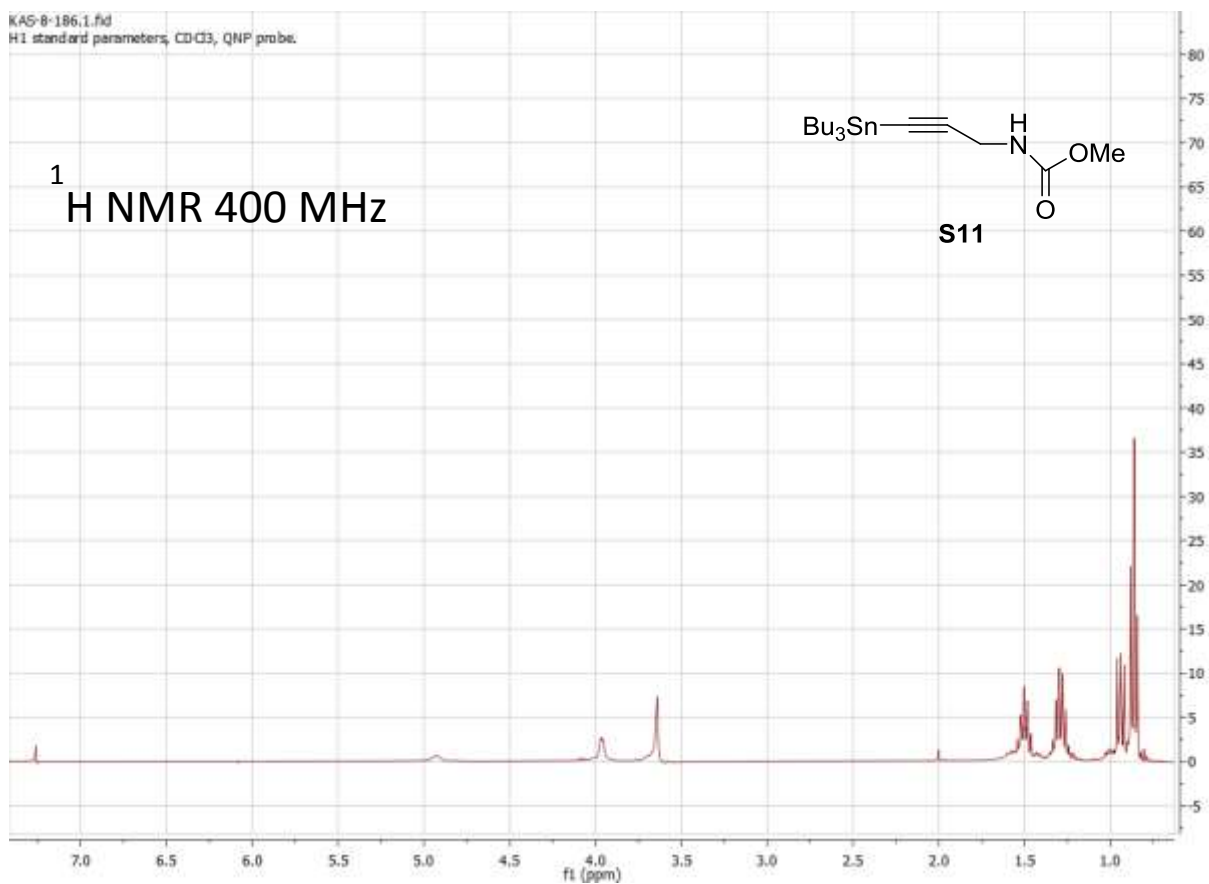
¹H NMR 400 MHz

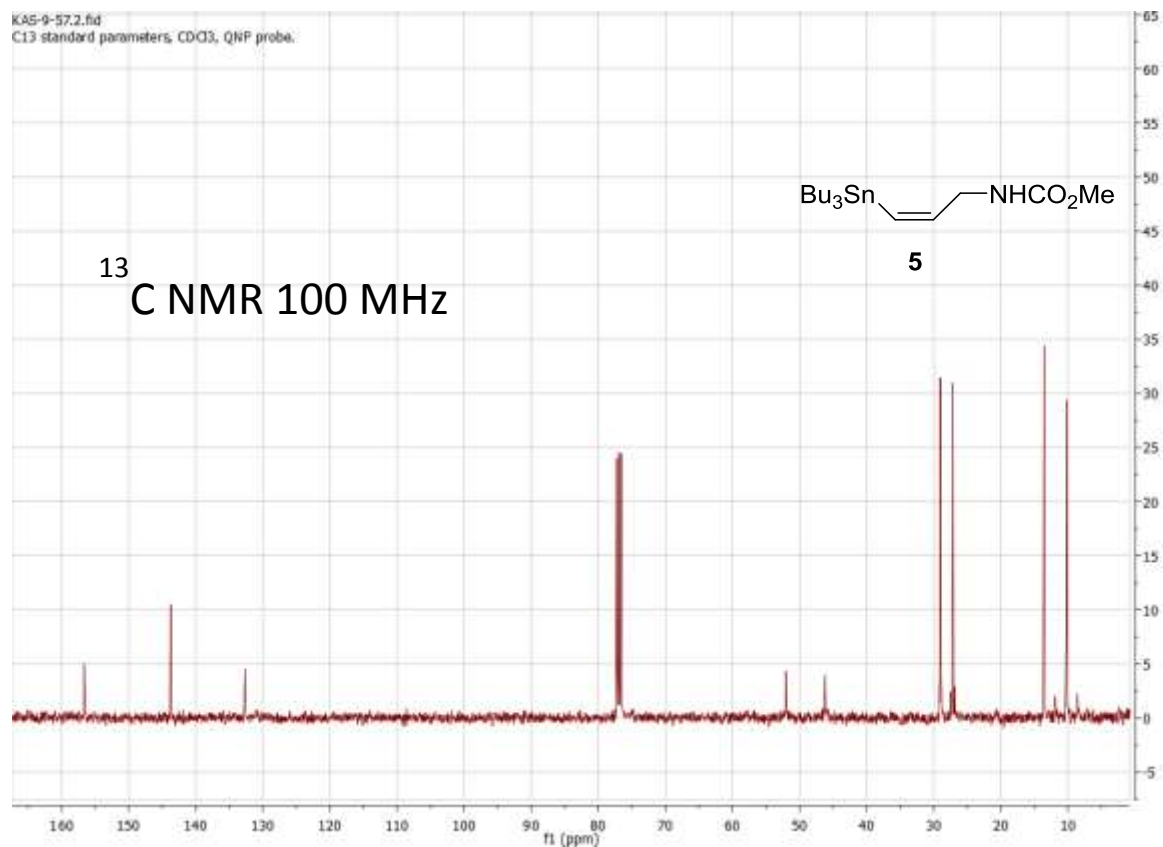
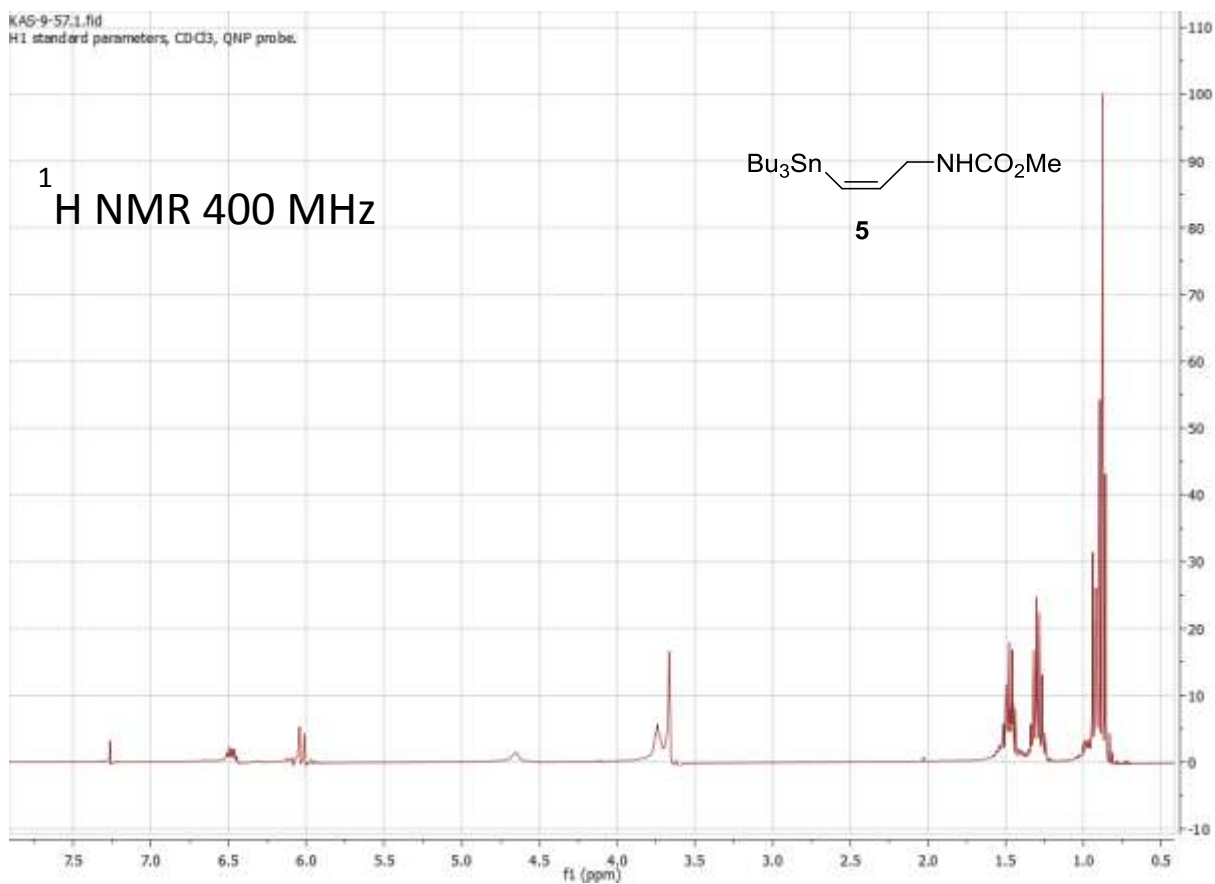


KAS-9-51.2.fid
C13 standard parameters, CDCl₃, QNP probe.

¹³C NMR 100MHz

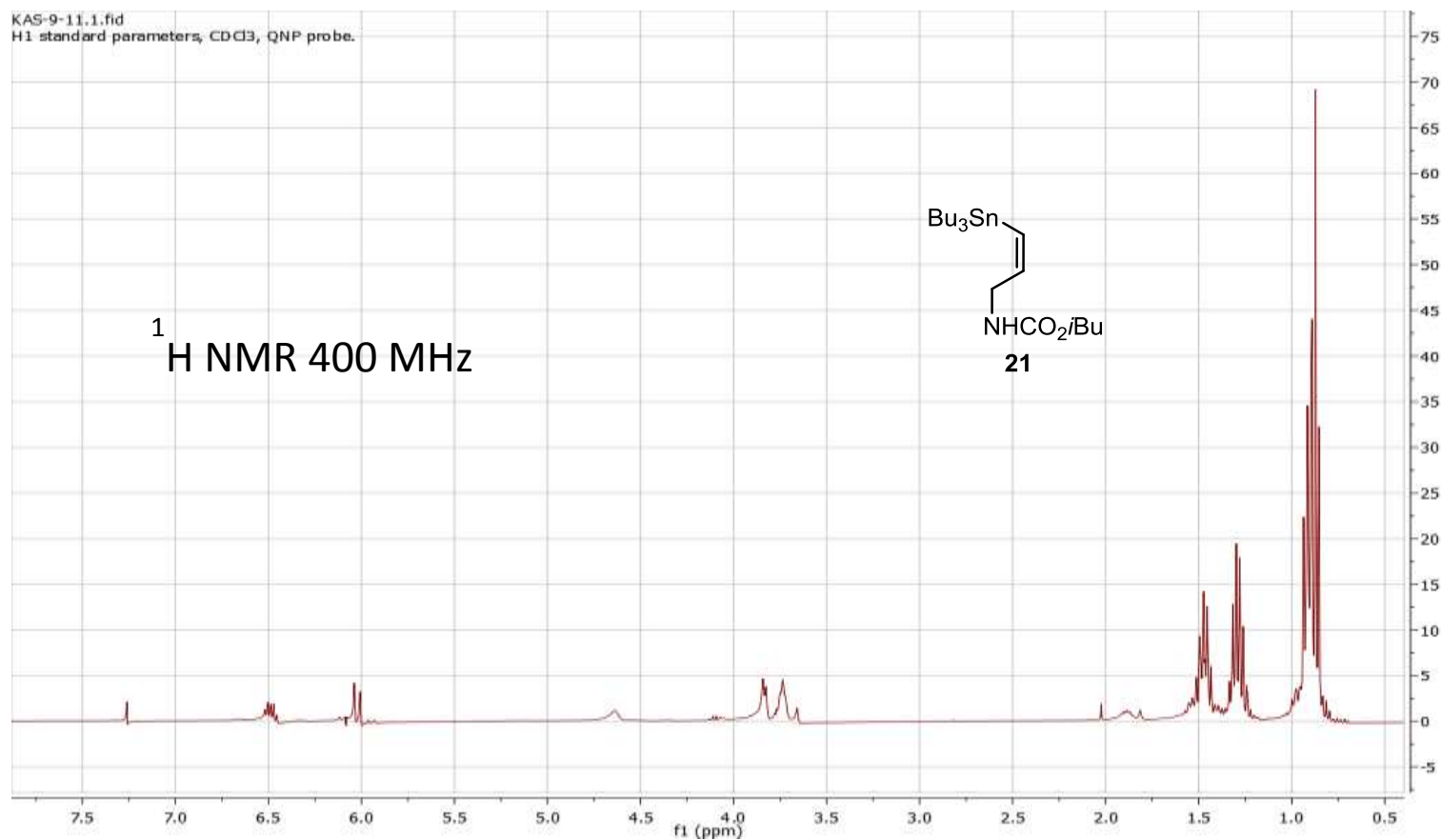






KAS-9-11.1.fid
H1 standard parameters, CDCl₃, QNP probe.

¹H NMR 400 MHz



KAS-9-11.2.fid
C13 standard parameters, CDCl₃, QNP probe.

¹³C NMR 100 MHz

