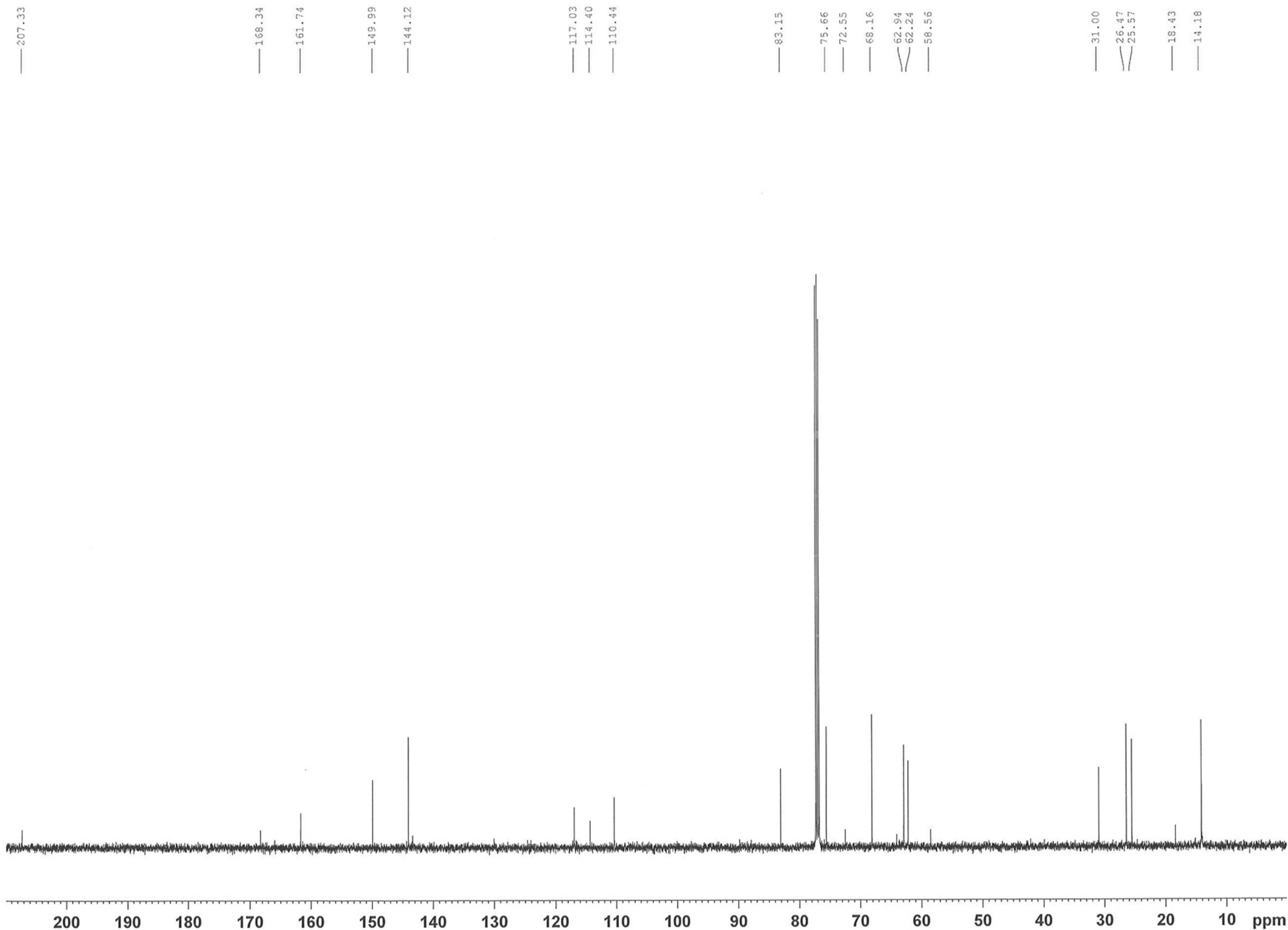
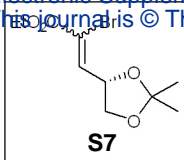


Current Data Parameters
NAME Feb08-2008
EXPNO 40
PROCNO 1

F2 - Acquisition Parameters
Date_ 20080208
Time 18.22
INSTRUM amx300
PROBHD 5 mm QNP 1H
PULPROG zg30
TD 53506
SOLVENT CDC13
RO 20
NS 16
R0 20
SWH 8771.930 Hz
FIDRES 0.163943 Hz
AQ 3.0498919 sec
RG 4096
DW 57.000 usec
DE 81.43 usec
TE 300.0 K
HL1 1 dB
D1 0.12000000 sec
P1 6.80 usec
SF01 299.8758200 MHz
NUCLEUS 1H

F2 - Processing parameters
SI 32768
SF 299.8727940 MHz
WDW EM
SSB 0
LB 0.30 Hz
GB 0
PC 1.00
SR 2794.00 Hz

1D NMR plot parameters
CX 32.00 cm
F1P 10.000 ppm
F1 2998.73 Hz
F2P -0.500 ppm
F2 -149.94 Hz
PPMCM 0.32812 ppm/cm
HZCM 98.39577 Hz/cm



```

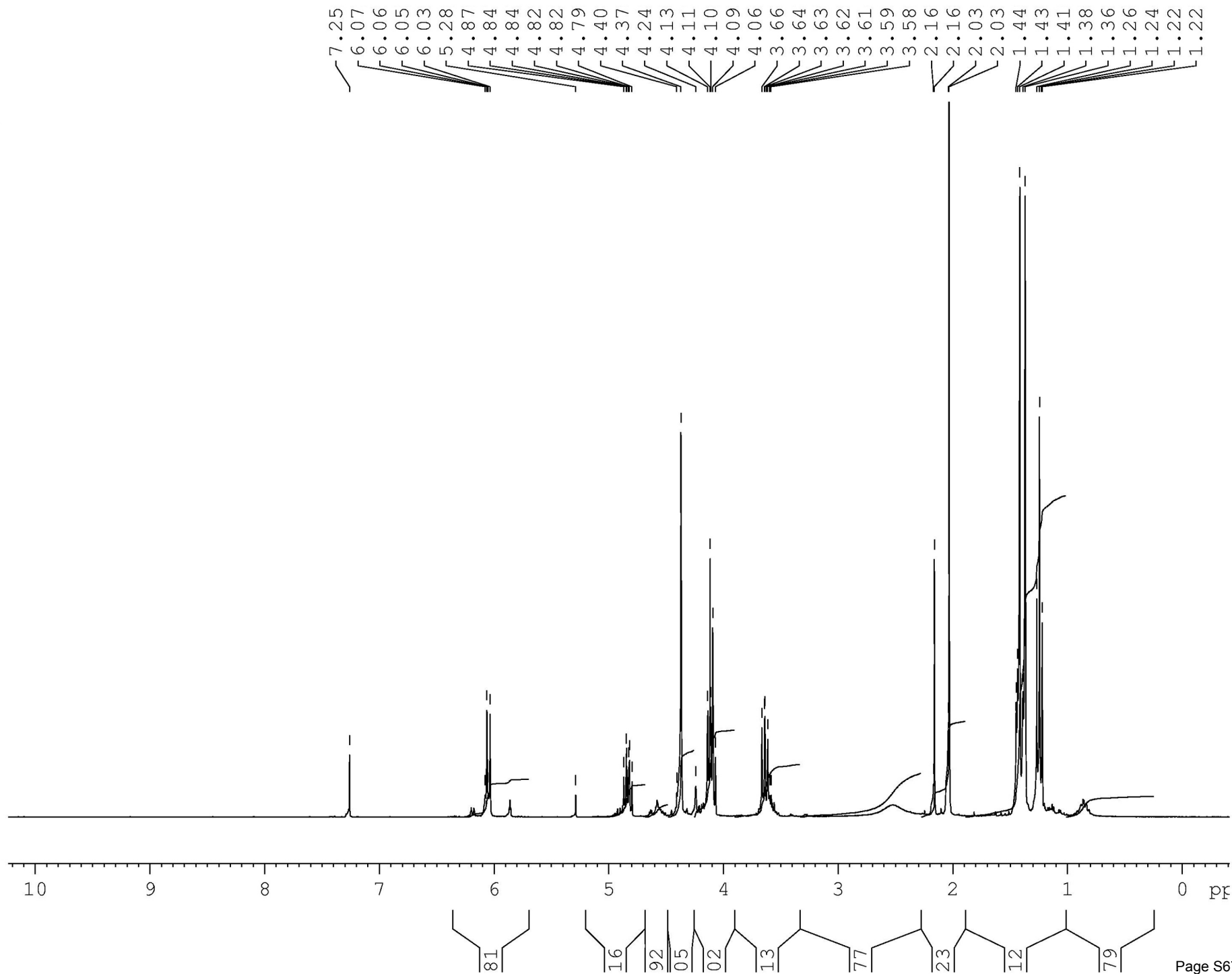
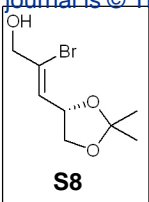
NAME      Jun05-2008
EXPNO      10
PROCNO      1
Date_      20080605
Time       20.07
INSTRUM     drx500
PROBHD      5 mm Multinu
PULPROG     zgpg30
TD          65536
SOLVENT     CDC13
NS          256
DS          4
SWH         31446.541 Hz
FIDRES      0.479836 Hz
AQ          1.0420883 sec
RG          3649.1
DW          15.900 usec
DE          6.00 usec
TE          300.0 K
D1          2.00000000 sec
d11         0.03000000 sec
d12         0.00002000 sec
    
```

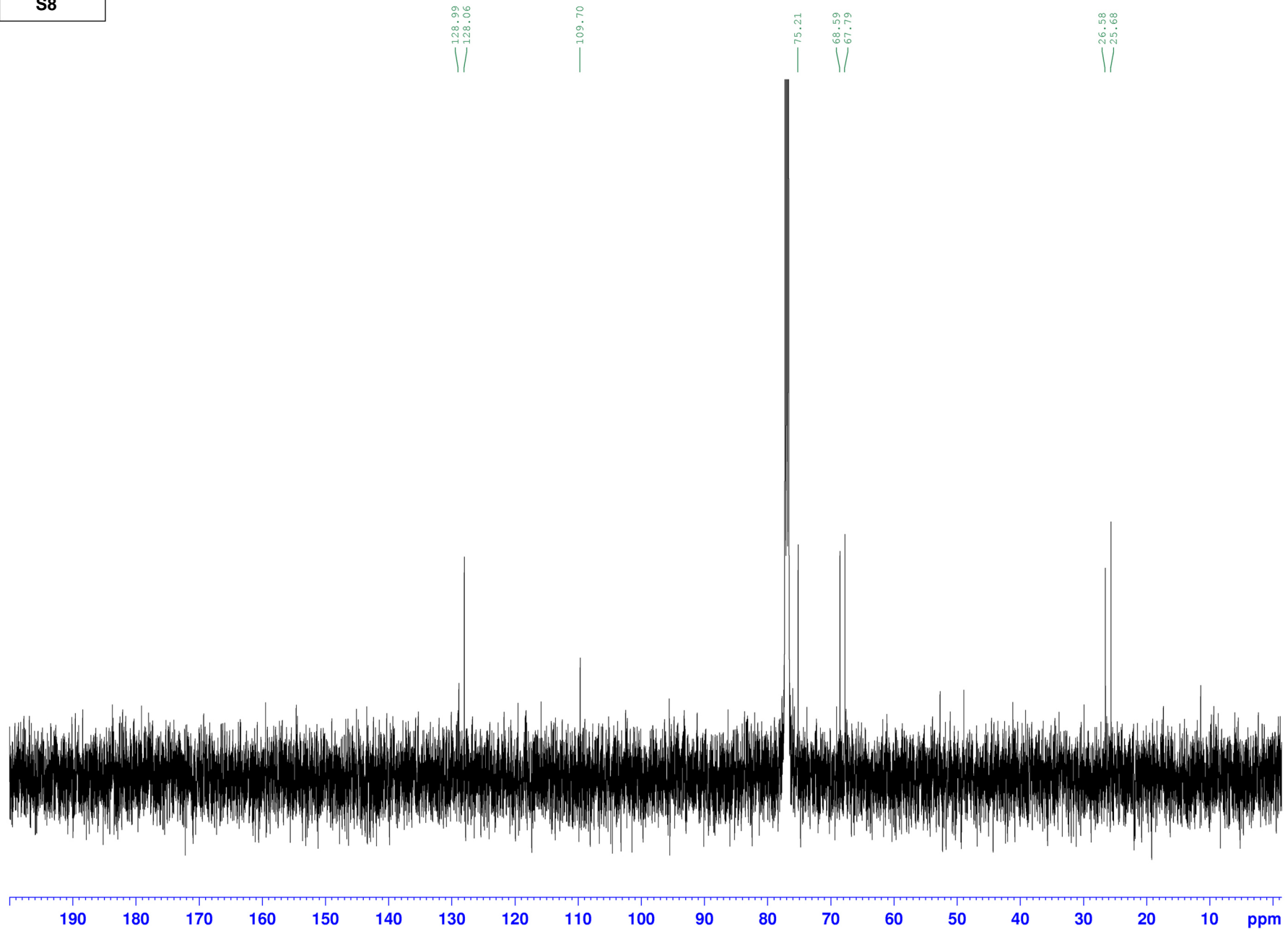
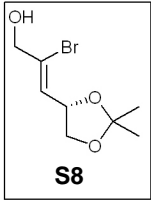
```

===== CHANNEL f1 =====
NUC1        13C
P1          5.50 usec
PL1         0.00 dB
SFO1        125.7715719 MHz
    
```

```

===== CHANNEL f2 =====
CPDPRG2     waltz16
NUC2        1H
PCPD2       95.00 usec
PL2         0.00 dB
PL12        19.00 dB
PL13        19.00 dB
SFO2        500.1320005 MHz
SI          32768
SF          125.7577814 MHz
WDW         EM
SSB         0
LB          1.00 Hz
GB          0
PC          1.40
    
```

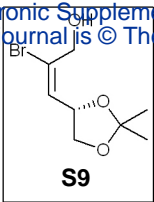




NAME Apr25-2009
EXPNO 10
PROCNO 1
Date_ 20090425
Time 19.22
INSTRUM drx500
PROBHD 5 mm Multinu
PULPROG zgpg30
TD 65536
SOLVENT CDC13
NS 2056
DS 4
SWH 31446.541 Hz
FIDRES 0.479836 Hz
AQ 1.0420883 sec
RG 4096
DW 15.900 use
DE 6.00 use
TE 300.0 K
D1 2.00000000 sec
d11 0.03000000 sec
d12 0.00002000 sec

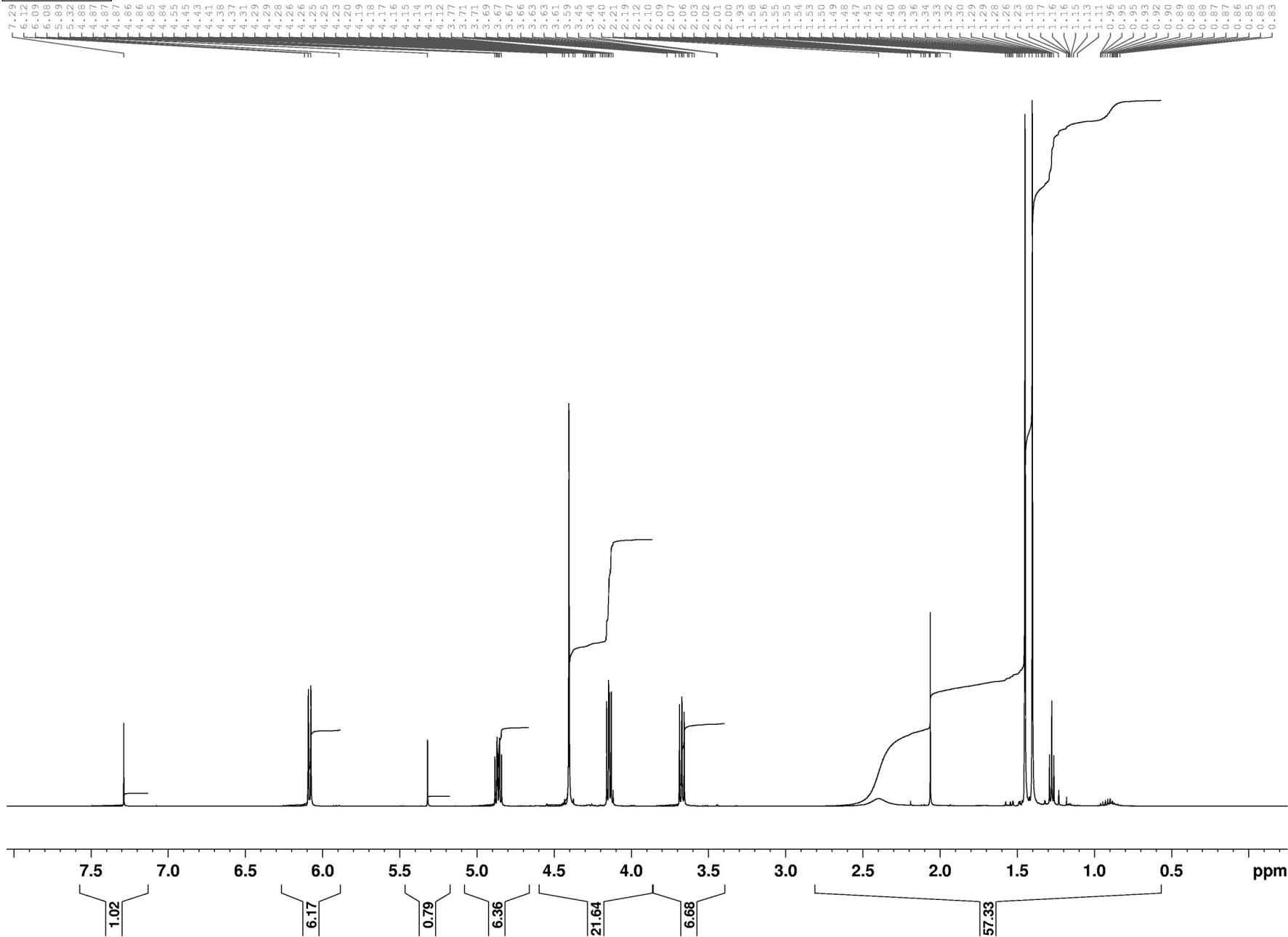
===== CHANNEL f1 ===
NUC1 13C
P1 5.50 use
PL1 0.00 dB
SF01 125.7715719 MHz

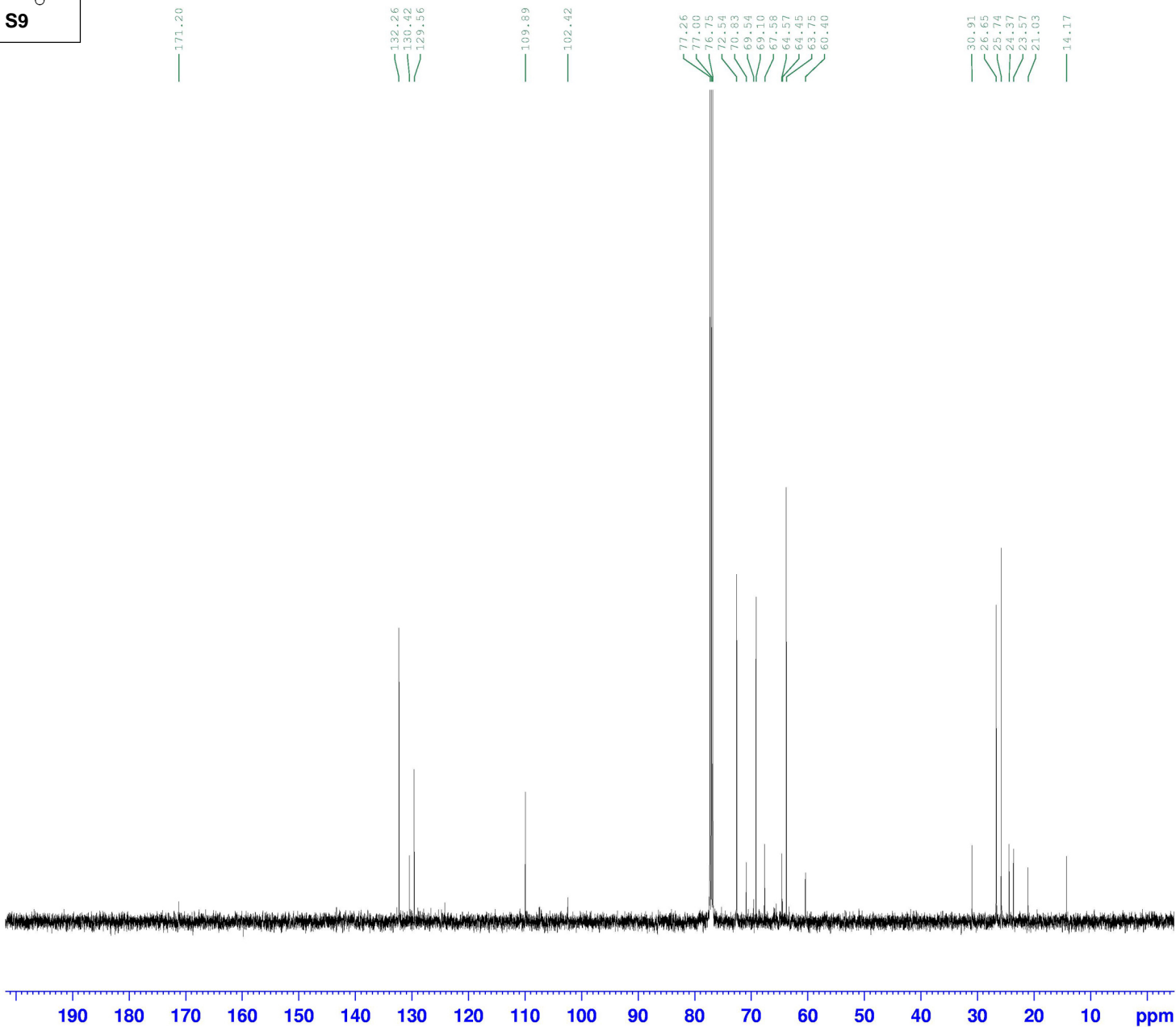
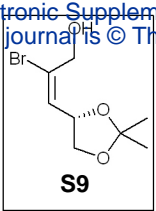
===== CHANNEL f2 ===
CPDPRG2 waltz16
NUC2 1H
PCPD2 95.00 use
PL2 0.00 dB
PL12 19.00 dB
PL13 19.00 dB
SF02 500.1320005 MHz
SI 32768
SF 125.7577911 MHz
WDW EM
SSB 0
LB 1.00 Hz
GB 0
PC 1.40



NAME Apr10-2008
EXPNO 50
PROCNO 1
Date_ 20080410
Time 13.56
INSTRUM drx500
PROBHD 5 mm Multinu
PULPROG zg30
TD 82642
SOLVENT CDCl3
NS 16
DS 2
SWH 10330.578 Hz
FIDRES 0.125004 Hz
AQ 3.9999712 sec
RG 181
DW 48.400 use
DE 6.00 use
TE 300.0 K
D1 1.0000000 sec

===== CHANNEL f1 ===
NUC1 1H
P1 15.50 use
PL1 0.00 dB
SF01 500.1330885 MHz
SI 65536
SF 500.1300000 MHz
WDW EM
SSB 0
LB 0.30 Hz
GB 0
PC 1.00

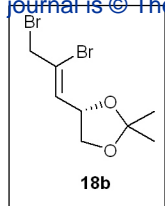




NAME Apr10-2008
EXPNO 51
PROCNO 1
Date_ 20080411
Time 1.56
INSTRUM drx500
PROBHD 5 mm Multinu
PULPROG zgpg30
TD 65536
SOLVENT CDCl3
NS 256
DS 4
SWH 31446.541 Hz
FIDRES 0.479836 Hz
AQ 1.0420883 sec
RG 3649.1
DW 15.900 usec
DE 6.00 usec
TE 300.0 K
D1 2.00000000 sec
d11 0.03000000 sec
d12 0.00002000 sec

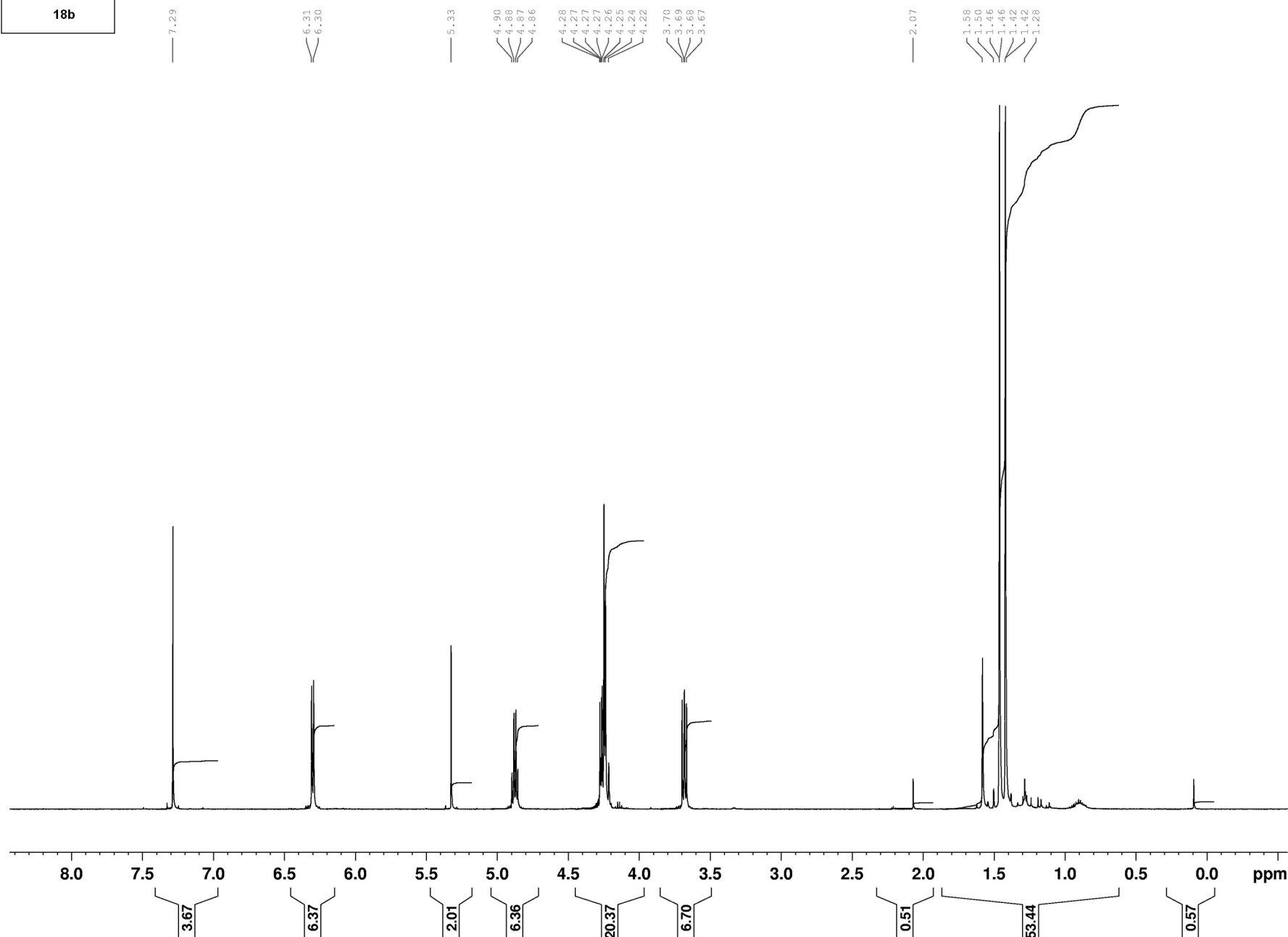
===== CHANNEL f1 =====
NUC1 13C
P1 5.50 usec
PL1 0.00 dB
SFO1 125.7715719 MHz

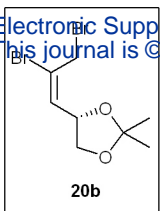
===== CHANNEL f2 =====
CPDPRG2 waltz16
NUC2 1H
PCPD2 95.00 usec
PL2 0.00 dB
PL12 19.00 dB
PL13 19.00 dB
SFO2 500.1320005 MHz
SI 32768
SF 125.7577922 MHz
WDW EM
SSB 0
LB 1.00 Hz
GB 0
PC 1.40



NAME ae065
EXPNO 1
PROCNO 1
Date_ 20080215
Time 13.35
INSTRUM drx500
PROBHD 5 mm Multinu
PULPROG zg30
TD 82642
SOLVENT CDCl3
NS 16
DS 2
SWH 10330.578 Hz
FIDRES 0.125004 Hz
AQ 3.9999712 sec
RG 574.7
DW 48.400 use
DE 6.00 use
TE 300.0 K
D1 1.00000000 sec

===== CHANNEL f1 ===
NUC1 1H
P1 15.50 use
PL1 0.00 dB
SF01 500.1330885 MHz
SI 131072
SF 500.1300000 MHz
WDW EM
SSB 0
LB 0.30 Hz
GB 0
PC 1.00



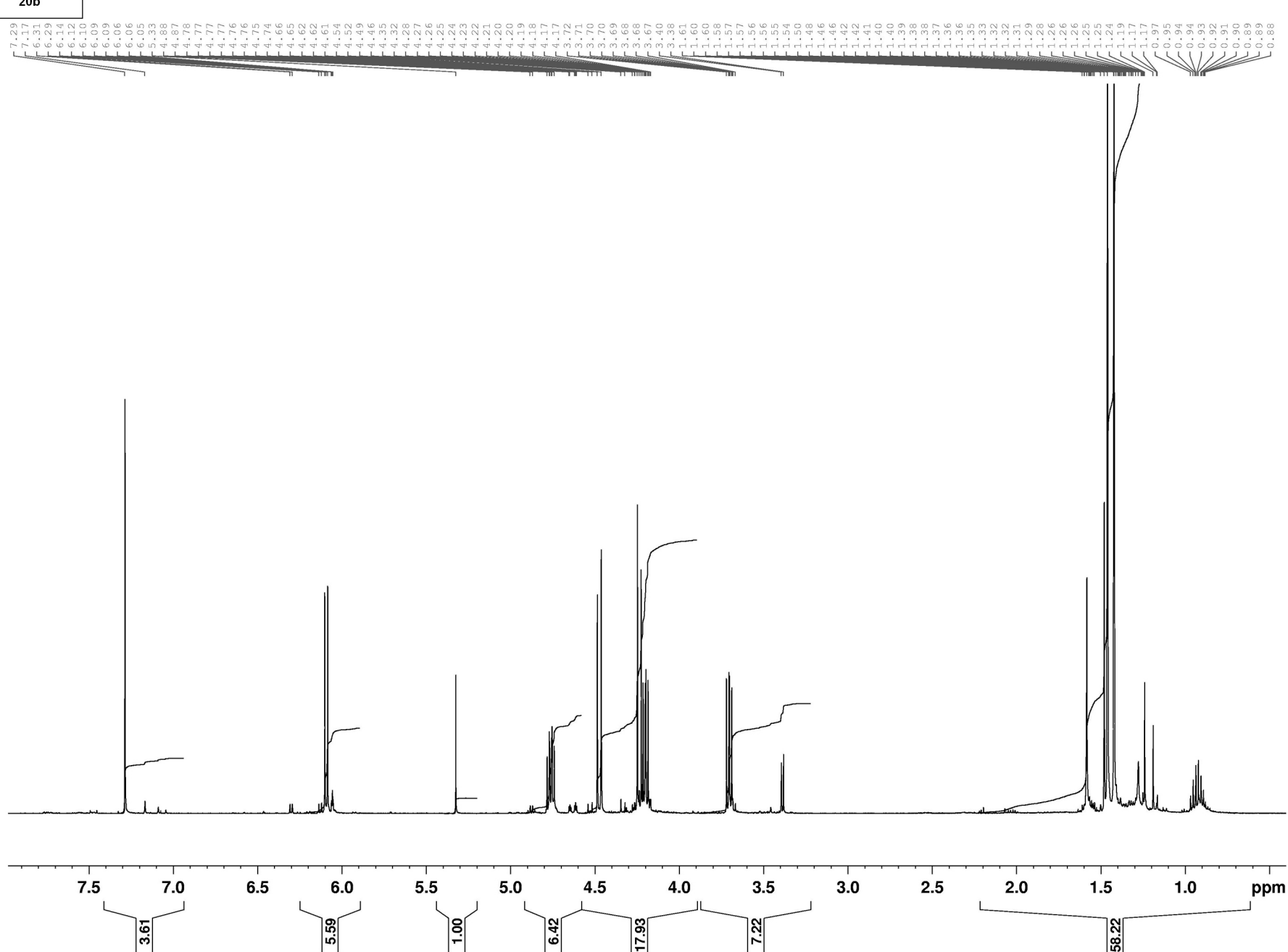


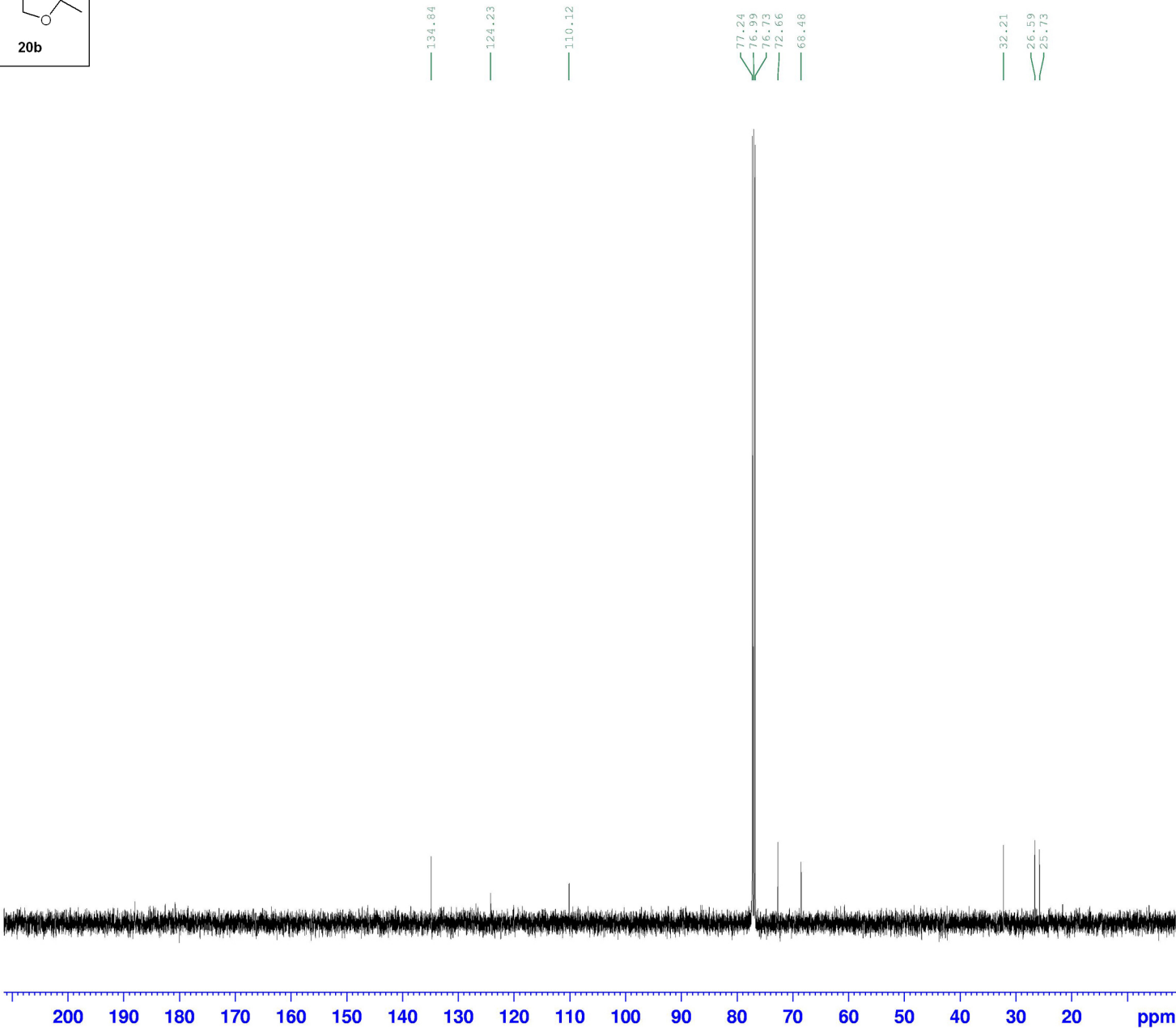
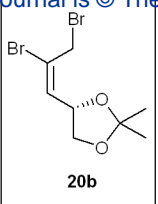
```

NAME          aeo40
EXPNO         1
PROCNO        1
Date_         20071207
Time          17.00
INSTRUM       drx500
PROBHD        5 mm Multinu
PULPROG       zg30
TD            82642
SOLVENT       CDCl3
NS            16
DS            2
SWH           10330.578 Hz
FIDRES        0.125004 Hz
AQ            3.9999712 sec
RG            645.1
DW            48.400 use
DE            6.00 use
TE            300.0 K
D1            1.00000000 sec
  
```

```

===== CHANNEL f1 =====
NUC1          1H
P1            14.80 use
PL1           0.00 dB
SF01          500.1330885 MHz
SI            131072
SF            500.1300000 MHz
WDW           EM
SSB           0
LB            0.30 Hz
GB            0
PC            1.00
  
```

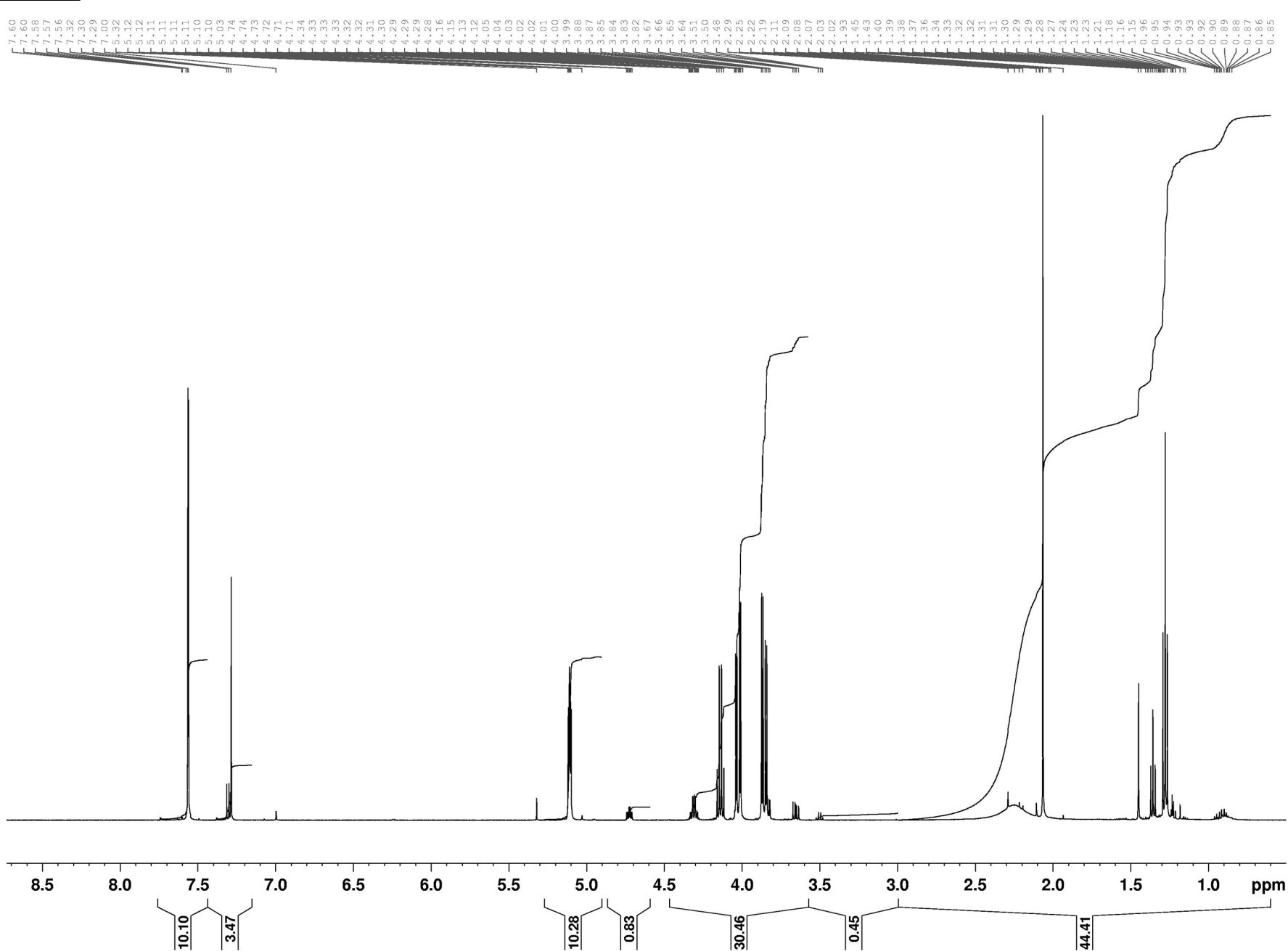
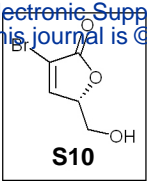




NAME aeo40
EXPNO 2
PROCNO 1
Date_ 20071207
Time 17.03
INSTRUM drx500
PROBHD 5 mm Multinu
PULPROG zgpg30
TD 65536
SOLVENT CDCl3
NS 75
DS 4
SWH 31446.541 Hz
FIDRES 0.479836 Hz
AQ 1.0420883 sec
RG 3251
DW 15.900 usec
DE 6.00 usec
TE 300.0 K
D1 2.00000000 sec
d11 0.03000000 sec
d12 0.00002000 sec

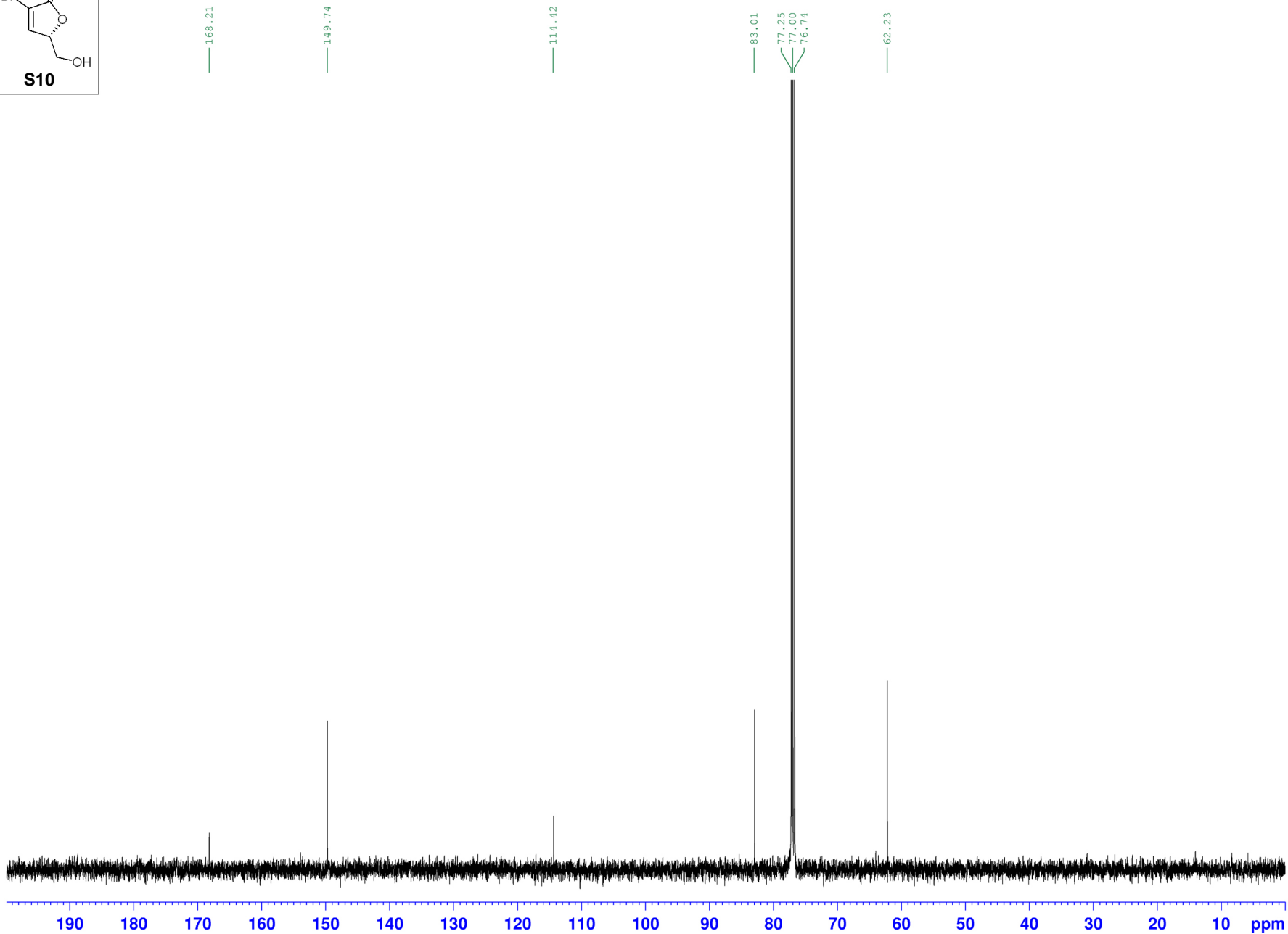
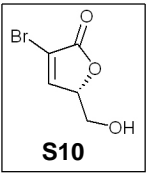
===== CHANNEL f1 =====
NUC1 13C
P1 5.10 usec
PL1 0.00 dB
SFO1 125.7715719 MHz

===== CHANNEL f2 =====
CPDPRG2 waltz16
NUC2 1H
PCPD2 95.00 usec
PL2 0.00 dB
PL12 19.00 dB
PL13 19.00 dB
SFO2 500.1320005 MHz
SI 131072
SF 125.7577939 MHz
WDW EM
SSB 0
LB 1.00 Hz
GB 0
PC 1.40



NAME May17-2008
EXPNO 10
PROCNO 1
Date_ 20080517
Time 19.04
INSTRUM drx500
PROBHD 5 mm Multinu
PULPROG zg30
TD 82642
SOLVENT CDCl3
NS 16
DS 2
SWH 10330.578 Hz
FIDRES 0.125004 Hz
AQ 3.9999712 sec
RG 362
DW 48.400 use
DE 6.00 use
TE 300.0 K
D1 1.00000000 sec

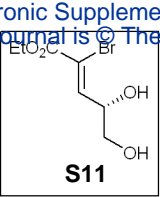
===== CHANNEL f1 =====
NUC1 1H
P1 15.50 use
PL1 0.00 dB
SF01 500.1330885 MHz
SI 65536
SF 500.1300000 MHz
WDW EM
SSB 0
LB 0.30 Hz
GB 0
PC 1.00



NAME May23-2008
EXPNO 21
PROCNO 1
Date_ 20080523
Time 15.35
INSTRUM drx500
PROBHD 5 mm Multinu
PULPROG zgpg30
TD 65536
SOLVENT CDCl3
NS 256
DS 4
SWH 31446.541 Hz
FIDRES 0.479836 Hz
AQ 1.0420883 sec
RG 5160.6
DW 15.900 use
DE 6.00 use
TE 300.0 K
D1 2.00000000 sec
d11 0.03000000 sec
d12 0.00002000 sec

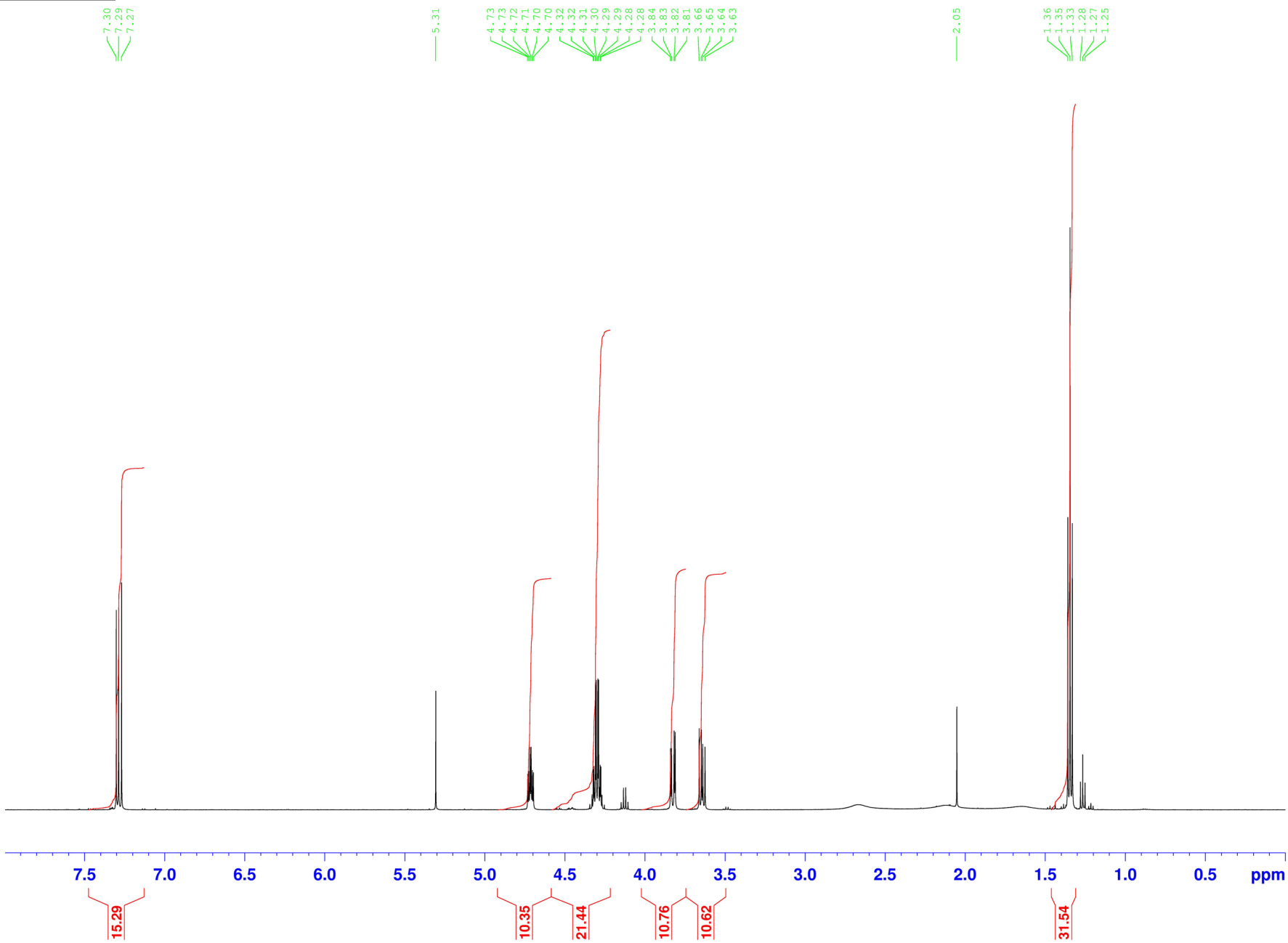
===== CHANNEL f1 ===
NUC1 13C
P1 5.50 use
PL1 0.00 dB
SF01 125.7715719 MHz

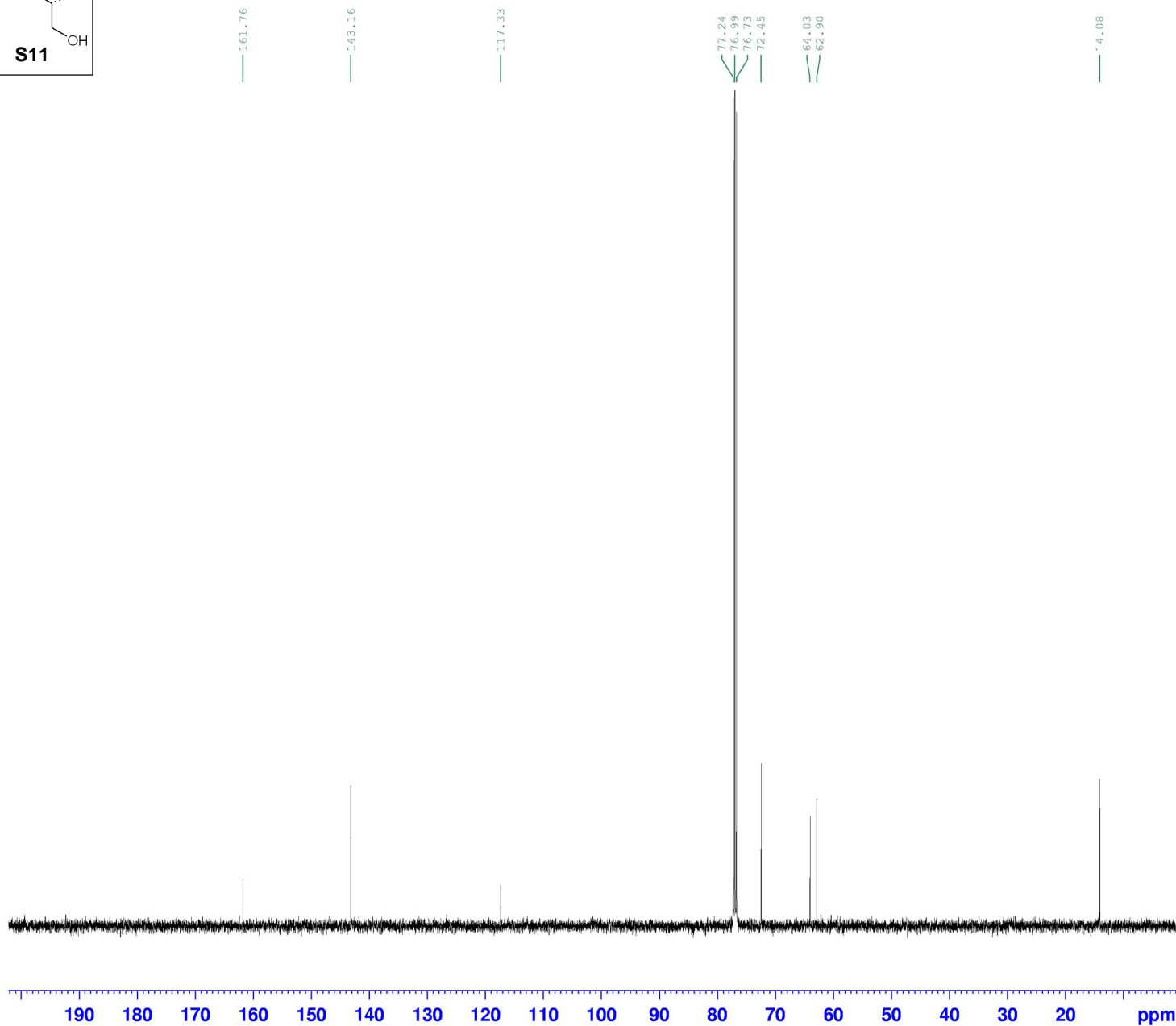
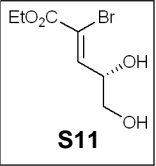
===== CHANNEL f2 ===
CPDPRG2 waltz16
NUC2 1H
PCPD2 95.00 use
PL2 0.00 dB
PL12 19.00 dB
PL13 19.00 dB
SF02 500.1320005 MHz
SI 32768
SF 125.7577922 MHz
WDW EM
SSB 0
LB 1.00 Hz
GB 0
PC 1.40



NAME May17-2008
EXPNO 20
PROCNO 1
Date_ 20080517
Time 20.08
INSTRUM drx500
PROBHD 5 mm Multinu
PULPROG zg30
TD 82642
SOLVENT CDC13
NS 16
DS 2
SWH 10330.578 Hz
FIDRES 0.125004 Hz
AQ 3.9999712 sec
RG 512
DW 48.400 use
DE 6.00 use
TE 300.0 K
D1 1.00000000 sec

===== CHANNEL f1 ===
NUC1 1H
P1 15.50 use
PL1 0.00 dB
SFO1 500.1330885 MHz
SI 65536
SF 500.1300088 MHz
WDW EM
SSB 0
LB 0.30 Hz
GB 0
PC 1.00

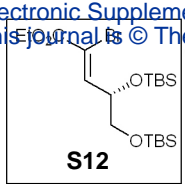




NAME May20-2008
EXPNO 82
PROCNO 1
Date_ 20080520
Time 18.59
INSTRUM drx500
PROBHD 5 mm Multinu
PULPROG zgpg30
TD 65536
SOLVENT CDCl3
NS 256
DS 4
SWH 31446.541 Hz
FIDRES 0.479836 Hz
AQ 1.0420883 sec
RG 3649.1
DW 15.900 usec
DE 6.00 usec
TE 300.0 K
D1 2.00000000 sec
d11 0.03000000 sec
d12 0.00002000 sec

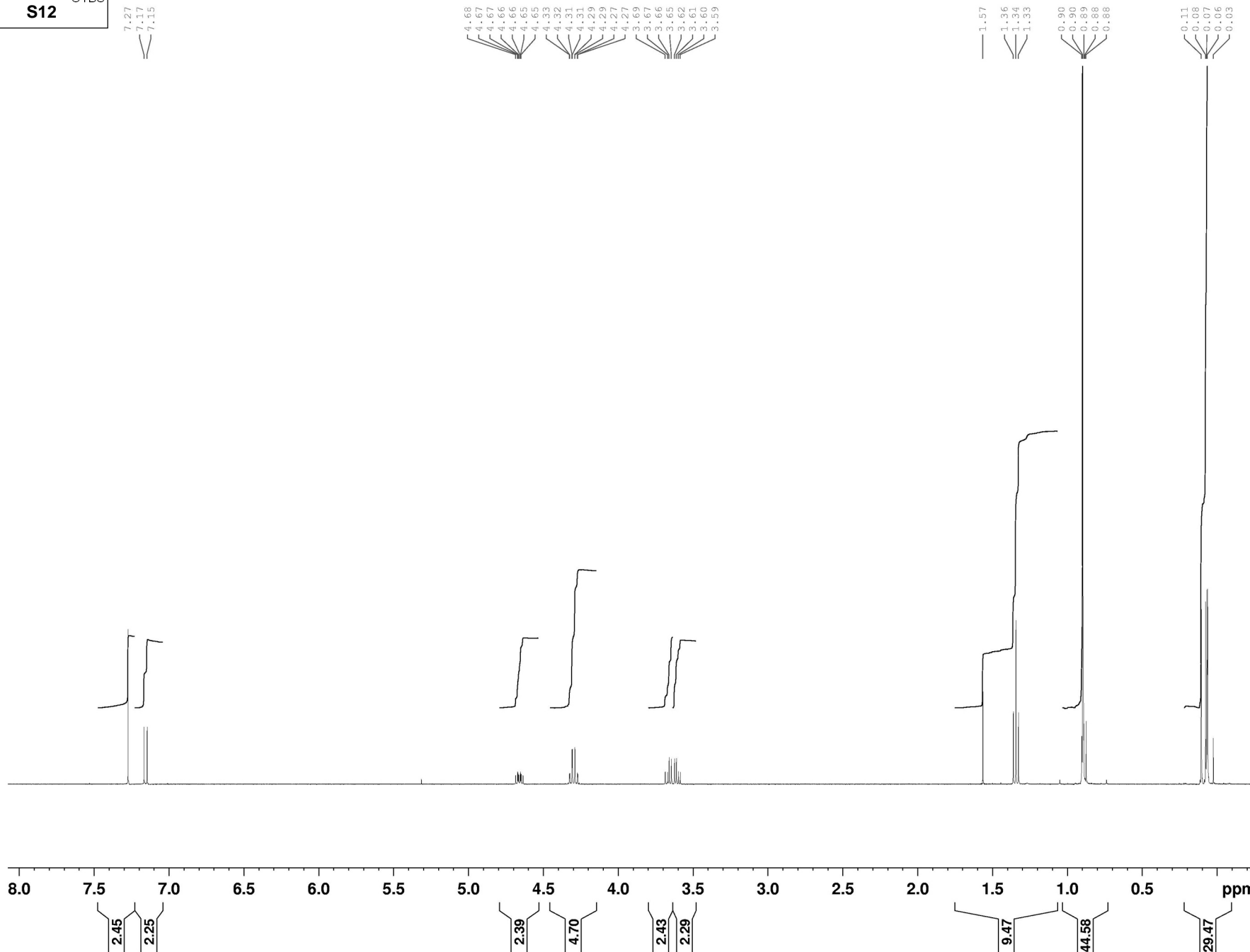
===== CHANNEL f1 =====
NUC1 13C
P1 5.50 usec
PL1 0.00 dB
SFO1 125.7715719 MHz

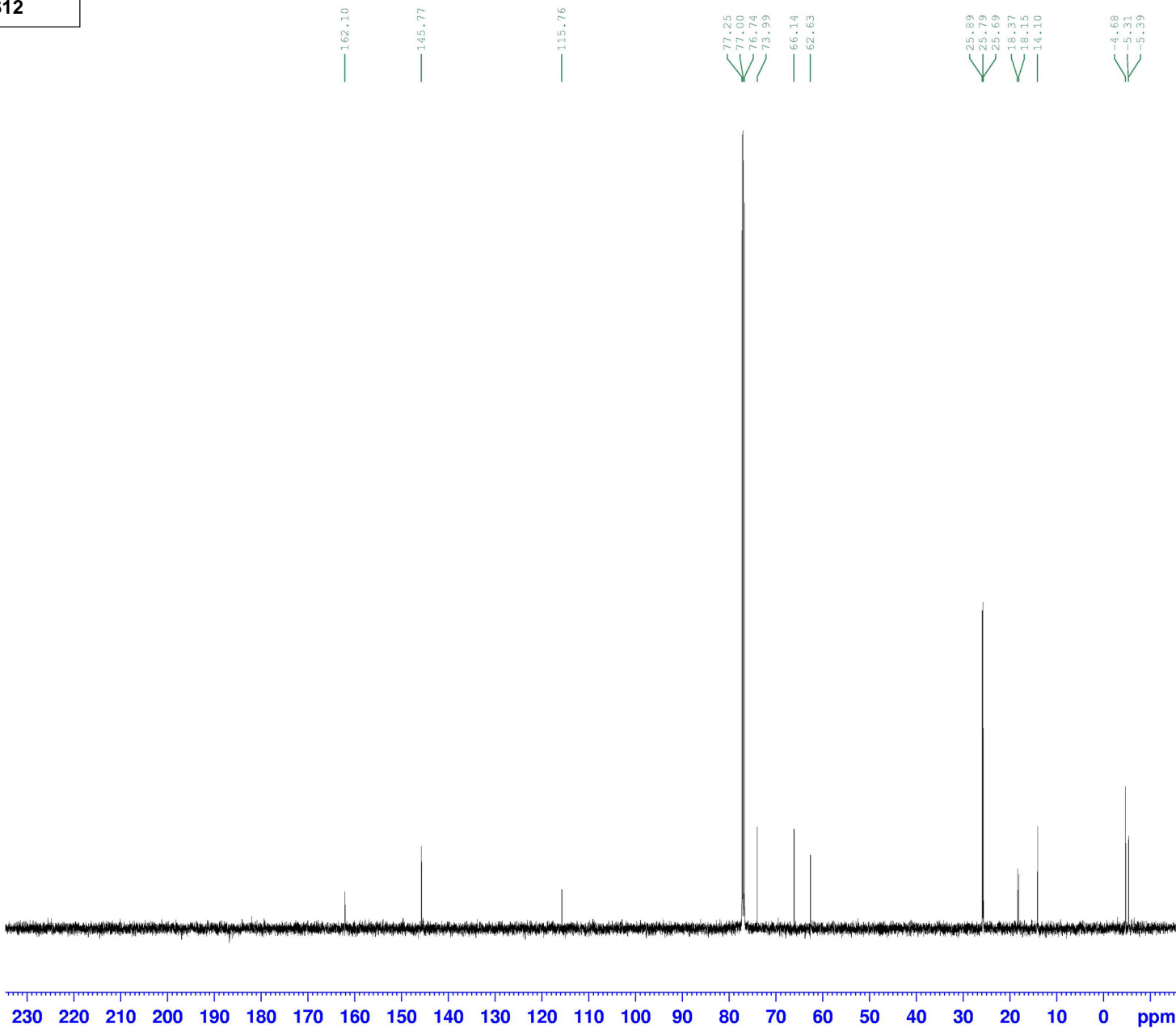
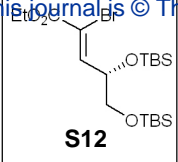
===== CHANNEL f2 =====
CPDPRG2 waltz16
NUC2 1H
PCPD2 95.00 usec
PL2 0.00 dB
PL12 19.00 dB
PL13 19.00 dB
SFO2 500.1320005 MHz
SI 32768
SF 125.7577938 MHz
WDW EM
SSB 0
LB 1.00 Hz
GB 0
PC 1.40



NAME ae113
EXPNO 1
PROCNO 1
Date_ 20090416
Time 17.33
INSTRUM av400
PROBHD 5 mm QNP 1H/15
PULPROG zg30
TD 65536
SOLVENT CDC13
NS 7
DS 0
SWH 8223.685 Hz
FIDRES 0.125483 Hz
AQ 3.9846387 sec
RG 406
DW 60.800 use
DE 16.52 use
TE 294.0 K
D1 1.00000000 sec
TD0 1

===== CHANNEL f1 =====
NUC1 1H
P1 11.70 use
PL1 0.00 dB
PL1W 13.81537533 W
SFO1 400.1324710 MHz
SI 131072
SF 400.1300000 MHz
WDW no
SSB 0
LB 0.00 Hz
GB 0
PC 1.40

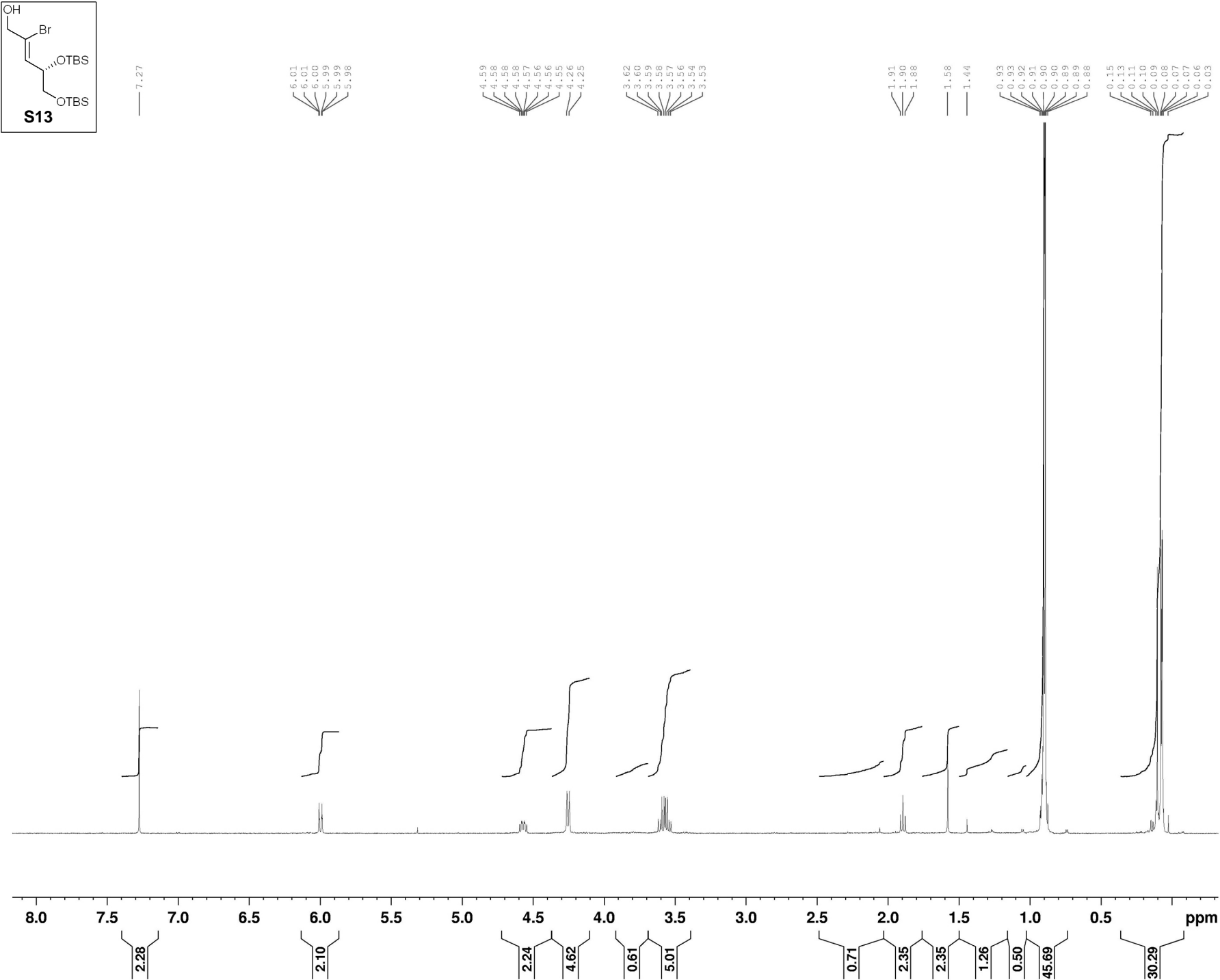




NAME May23-2008
EXPNO 41
PROCNO 1
Date_ 20080523
Time 16.28
INSTRUM drx500
PROBHD 5 mm Multinu
PULPROG zgpg30
TD 65536
SOLVENT CDC13
NS 256
DS 4
SWH 31446.541 Hz
FIDRES 0.479836 Hz
AQ 1.0420883 sec
RG 5792.6
DW 15.900 usec
DE 6.00 usec
TE 300.0 K
D1 2.00000000 sec
d11 0.03000000 sec
d12 0.00002000 sec

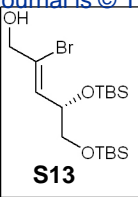
===== CHANNEL f1 =====
NUC1 13C
P1 5.50 usec
PL1 0.00 dB
SFO1 125.7715719 MHz

===== CHANNEL f2 =====
CPDPRG2 waltz16
NUC2 1H
PCPD2 95.00 usec
PL2 0.00 dB
PL12 19.00 dB
PL13 19.00 dB
SFO2 500.1320005 MHz
SI 32768
SF 125.7577912 MHz
WDW EM
SSB 0
LB 1.00 Hz
GB 0
PC 1.40



NAME ae115
EXPNO 1
PROCNO 1
Date_ 20090416
Time 17.29
INSTRUM av400
PROBHD 5 mm QNP 1H/15
PULPROG zg30
TD 65536
SOLVENT CDC13
NS 15
DS 0
SWH 8223.685 Hz
FIDRES 0.125483 Hz
AQ 3.9846387 sec
RG 456
DW 60.800 use
DE 16.52 use
TE 294.0 K
D1 1.00000000 sec
TD0 1

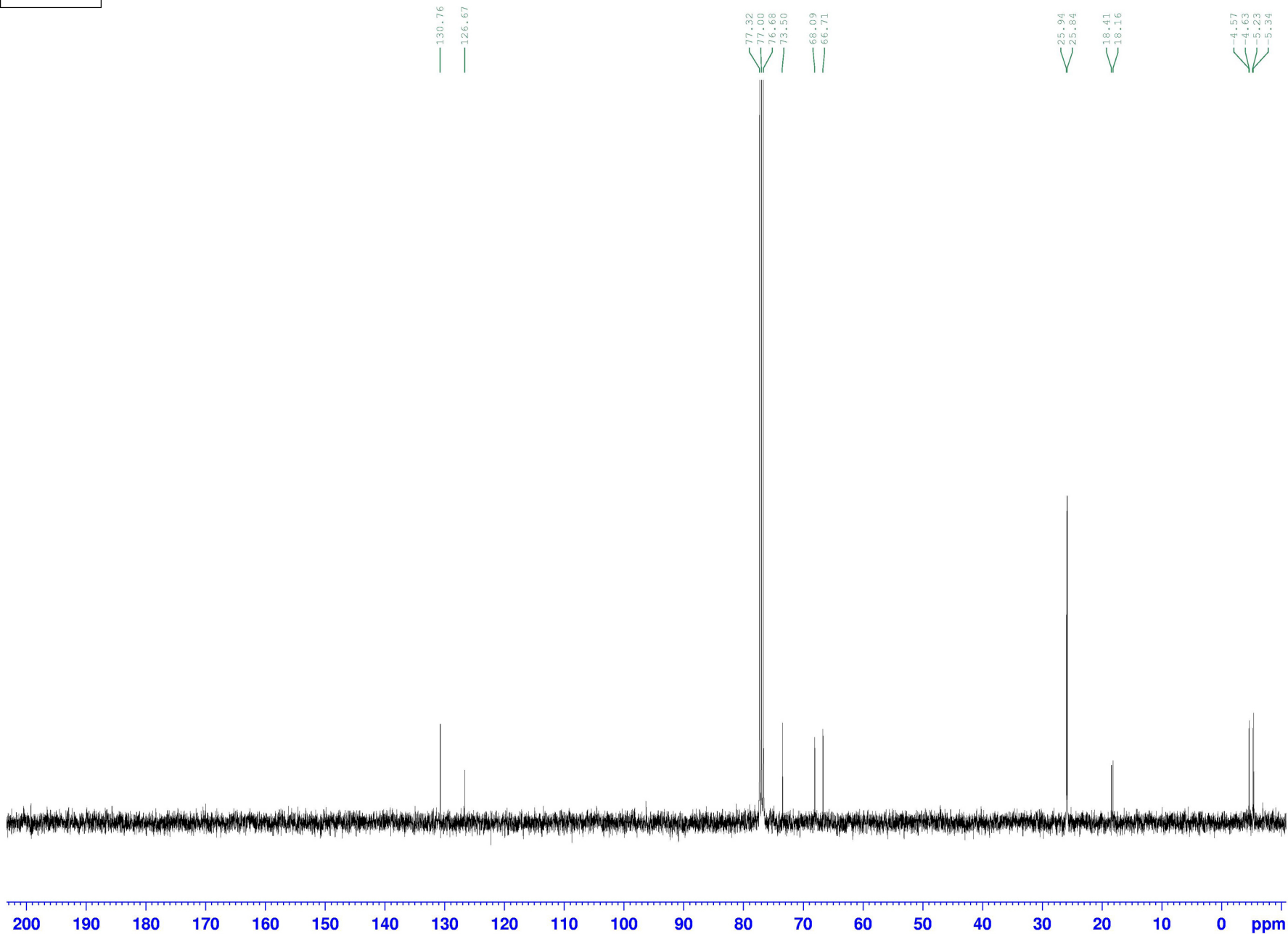
===== CHANNEL f1 =====
NUC1 1H
P1 11.70 use
PL1 0.00 dB
PL1W 13.81537533 W
SFO1 400.1324710 MHz
SI 32768
SF 400.1300000 MHz
WDW EM
SSB 0
LB 0.30 Hz
GB 0
PC 1.40

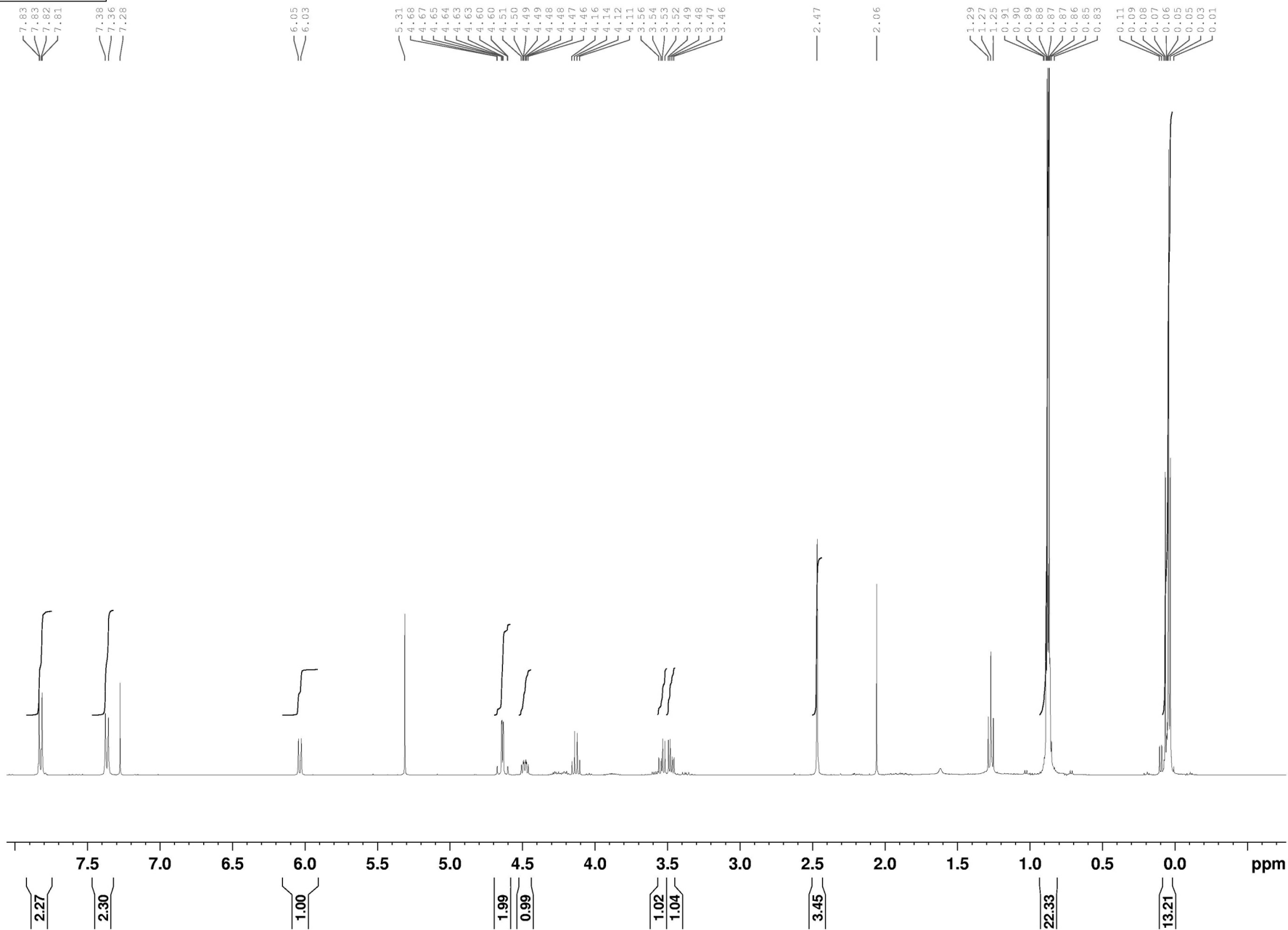
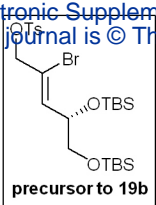


NAME ae114
EXPNO 1
PROCNO 1
Date_ 20080530
Time 17.23
INSTRUM av400
PROBHD 5 mm QNP 1H/15
PULPROG zgpg30
TD 65536
SOLVENT CDCl3
NS 161
DS 0
SWH 24038.461 Hz
FIDRES 0.366798 Hz
AQ 1.3631988 sec
RG 2050
DW 20.800 use
DE 9.78 use
TE 293.2 K
D1 2.00000000 sec
D11 0.03000000 sec
TD0 1

===== CHANNEL f1 =====
NUC1 13C
P1 9.00 use
PL1 -2.00 dB
PL1W 65.28957367 W
SFO1 100.6228298 MHz

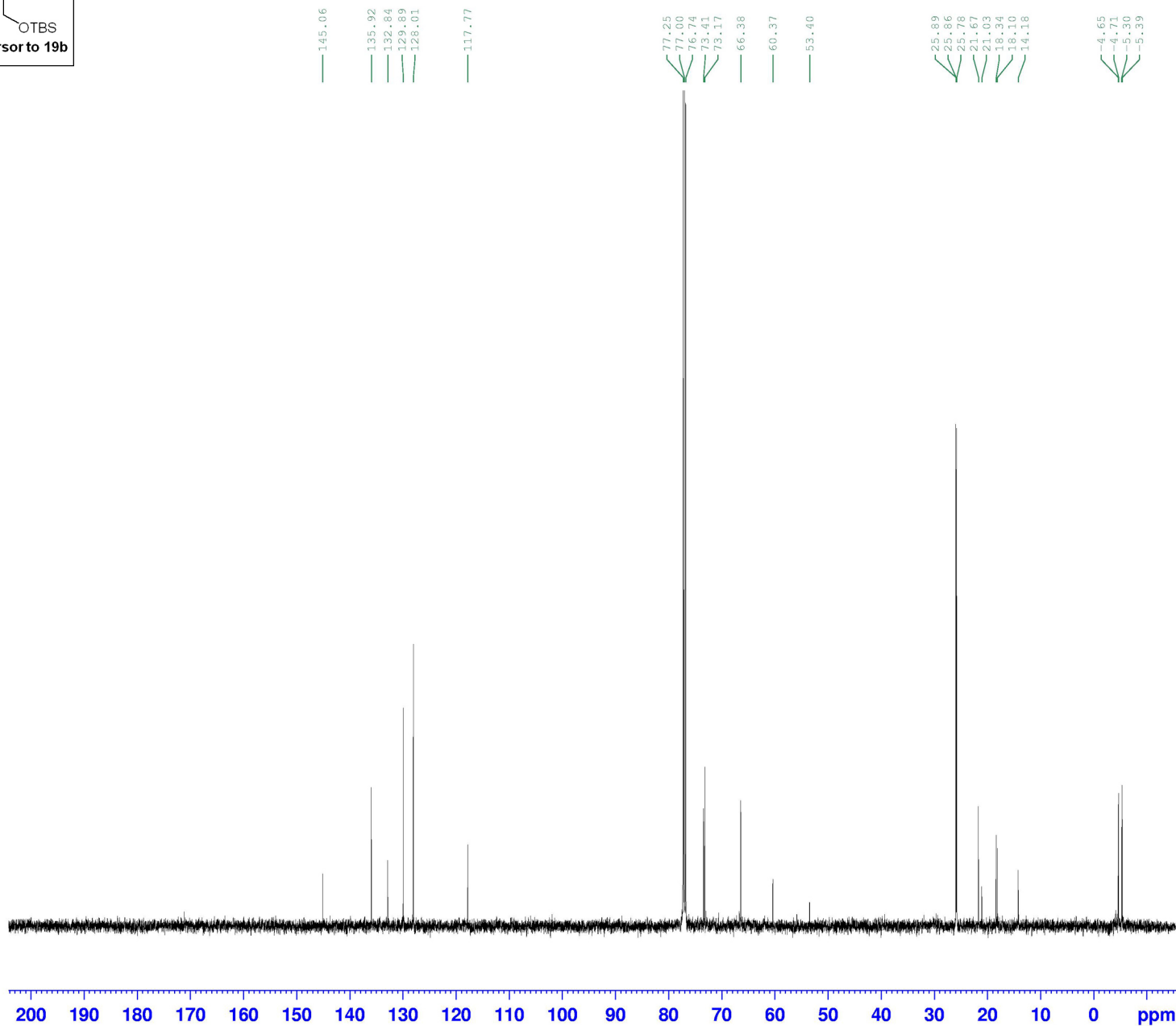
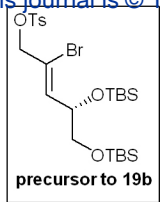
===== CHANNEL f2 =====
CPDPRG2 waltz16
NUC2 1H
PCPD2 90.00 use
PL2 0.00 dB
PL12 17.72 dB
PL13 18.00 dB
PL2W 13.81537533 W
PL12W 0.23354080 W
PL13W 0.21895894 W
SFO2 400.1316005 MHz
SI 32768
SF 100.6127708 MHz
WDW EM
SSB 0
LB 1.00 Hz
GB 0
PC 1.40





NAME ae120
EXPNO 2
PROCNO 1
Date_ 20080528
Time 15.44
INSTRUM av400
PROBHD 5 mm QNP 1H/15
PULPROG zg30
TD 65536
SOLVENT CDCl3
NS 16
DS 0
SWH 8223.685 Hz
FIDRES 0.125483 Hz
AQ 3.9846387 sec
RG 128
DW 60.800 use
DE 16.52 use
TE 293.2 K
D1 1.00000000 sec
TD0 1

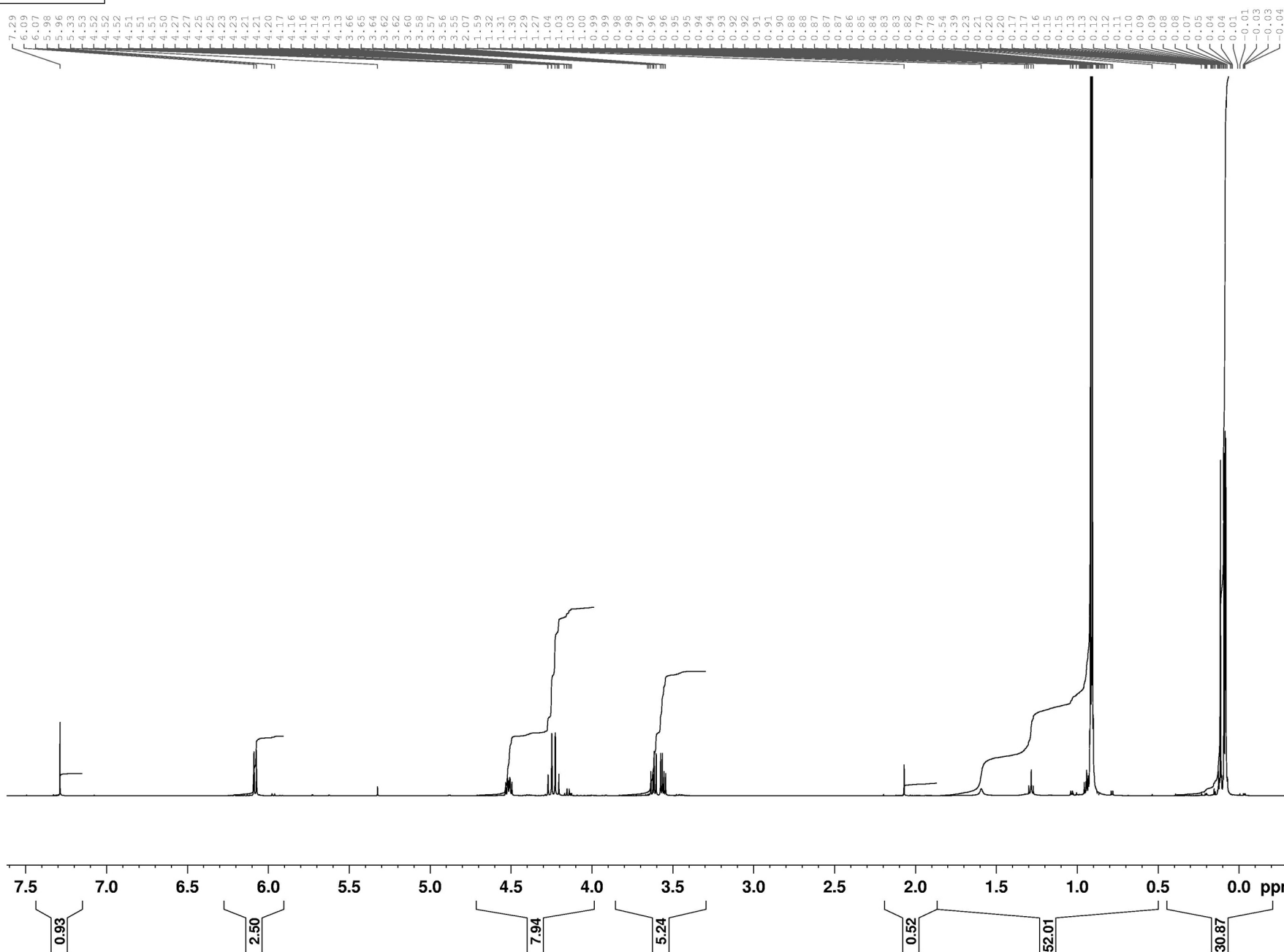
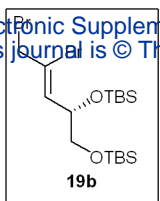
===== CHANNEL f1 =====
NUC1 1H
P1 11.70 use
PL1 0.00 dB
PL1W 13.81537533 W
SFO1 400.1324710 MHz
SI 32768
SF 400.1300000 MHz
WDW EM
SSB 0
LB 0.30 Hz
GB 0
PC 1.40



NAME May28-2008
EXPNO 13
PROCNO 1
Date_ 20080528
Time 17.42
INSTRUM drx500
PROBHD 5 mm Multinu
PULPROG zgpg30
TD 65536
SOLVENT CDC13
NS 256
DS 4
SWH 31446.541 Hz
FIDRES 0.479836 Hz
AQ 1.0420883 sec
RG 8192
DW 15.900 usec
DE 6.00 usec
TE 300.0 K
D1 2.00000000 sec
d11 0.03000000 sec
d12 0.00002000 sec

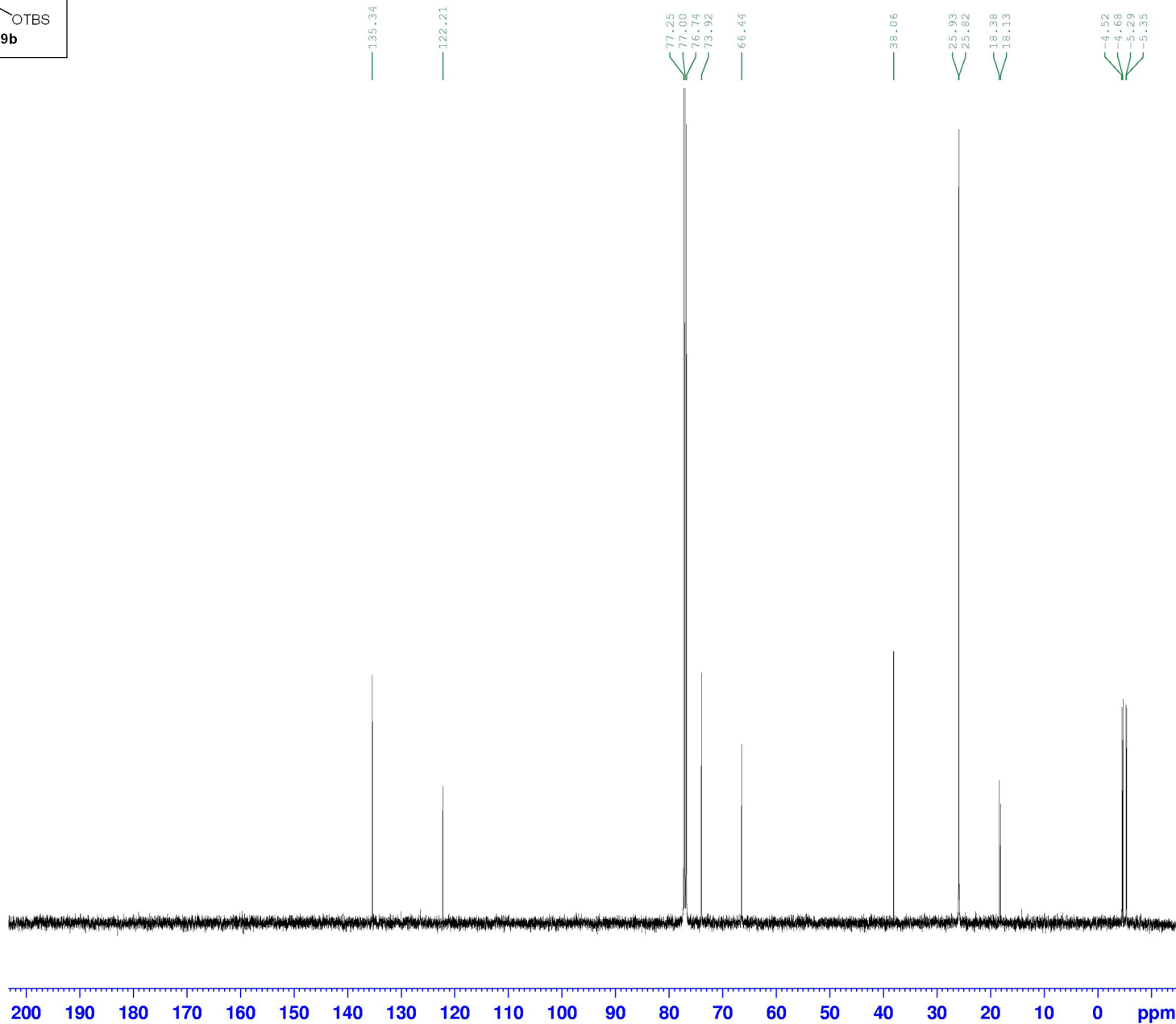
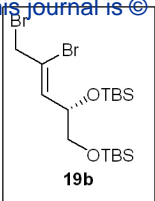
===== CHANNEL f1 =====
NUC1 13C
P1 5.50 usec
PL1 0.00 dB
SFO1 125.7715719 MHz

===== CHANNEL f2 =====
CPDPRG2 waltz16
NUC2 1H
PCPD2 95.00 usec
PL2 0.00 dB
PL12 19.00 dB
PL13 19.00 dB
SFO2 500.1320005 MHz
SI 32768
SF 125.7577922 MHz
WDW EM
SSB 0
LB 1.00 Hz
GB 0
PC 1.40



NAME May29-2008
EXPNO 11
PROCNO 1
Date_ 20080530
Time 6.53
INSTRUM drx500
PROBHD 5 mm Multinu
PULPROG zg30
TD 82642
SOLVENT CDCl3
NS 16
DS 2
SWH 10330.578 Hz
FIDRES 0.125004 Hz
AQ 3.9999712 sec
RG 181
DW 48.400 use
DE 6.00 use
TE 300.0 K
D1 1.00000000 sec

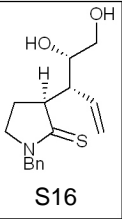
===== CHANNEL f1 =====
NUC1 1H
P1 15.50 use
PL1 0.00 dB
SF01 500.1330885 MHz
SI 65536
SF 500.1300000 MHz
WDW EM
SSB 0
LB 0.30 Hz
GB 0
PC 1.00



NAME May29-2008
EXPNO 10
PROCNO 1
Date_ 20080529
Time 17.21
INSTRUM drx500
PROBHD 5 mm Multinu
PULPROG zgpg30
TD 65536
SOLVENT CDCl3
NS 256
DS 4
SWH 31446.541 Hz
FIDRES 0.479836 Hz
AQ 1.0420883 sec
RG 6502
DW 15.900 usec
DE 6.00 usec
TE 300.0 K
D1 2.00000000 sec
d11 0.03000000 sec
d12 0.00002000 sec

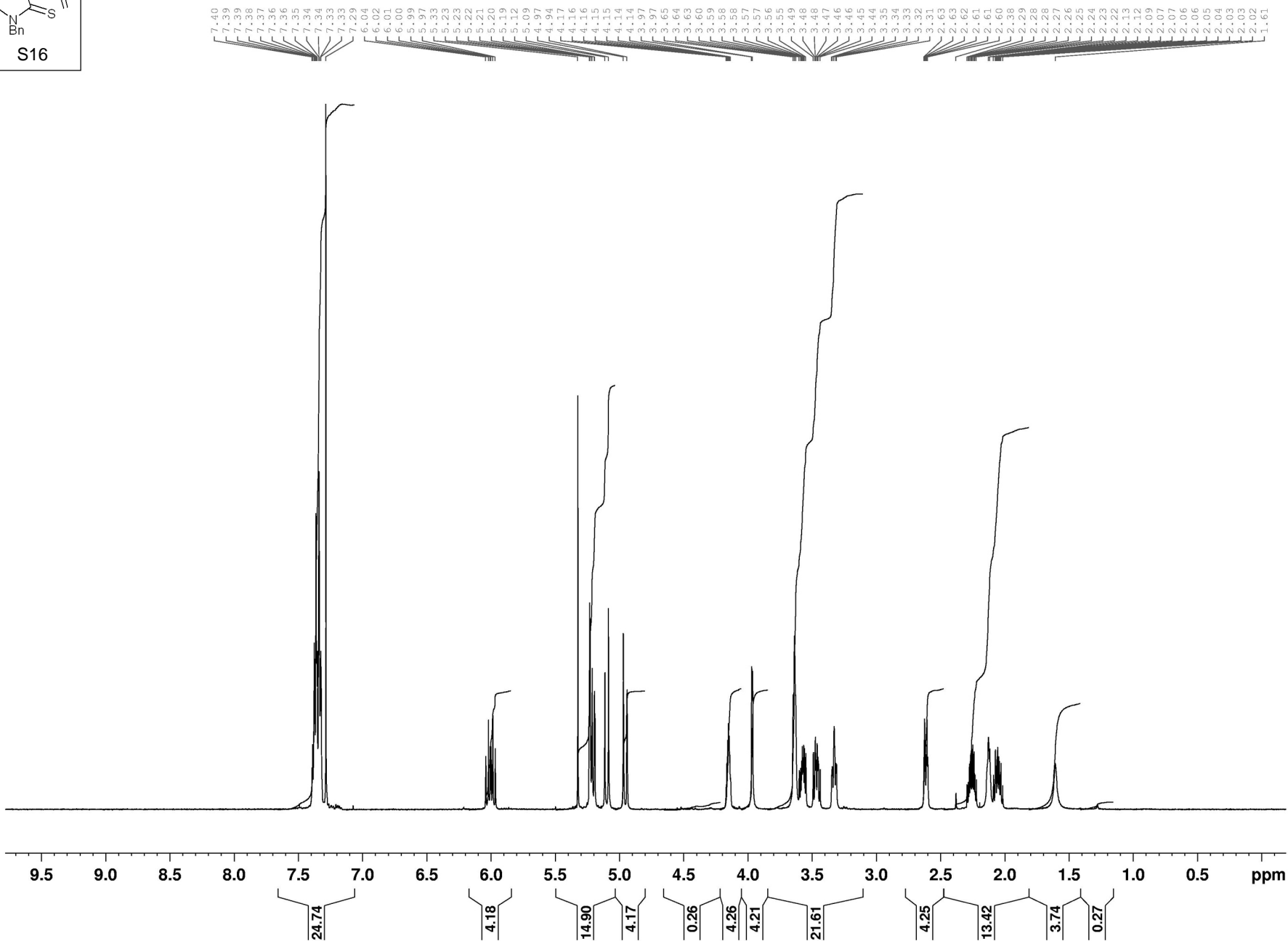
===== CHANNEL f1 =====
NUC1 13C
P1 5.50 usec
PL1 0.00 dB
SFO1 125.7715719 MHz

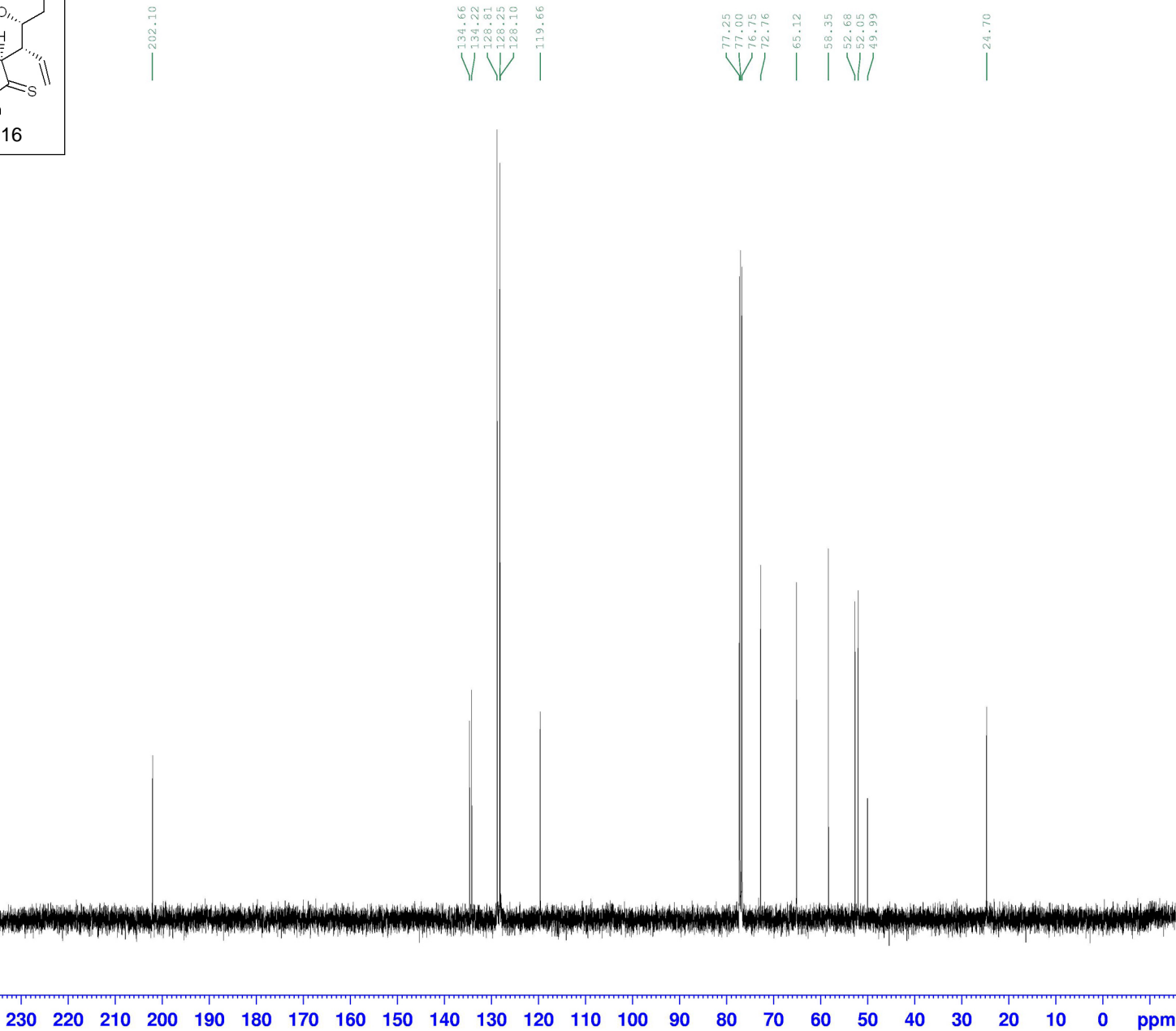
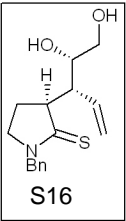
===== CHANNEL f2 =====
CPDPRG2 waltz16
NUC2 1H
PCPD2 95.00 usec
PL2 0.00 dB
PL12 19.00 dB
PL13 19.00 dB
SFO2 500.1320005 MHz
SI 32768
SF 125.7577914 MHz
WDW EM
SSB 0
LB 1.00 Hz
GB 0
PC 1.40



NAME ae074
EXPNO 1
PROCNO 1
Date_ 20080305
Time 13.29
INSTRUM drx500
PROBHD 5 mm Multinu
PULPROG zg30
TD 82642
SOLVENT CDCl3
NS 16
DS 2
SWH 10330.578 Hz
FIDRES 0.125004 Hz
AQ 3.9999712 sec
RG 574.7
DW 48.400 use
DE 6.00 use
TE 300.0 K
D1 1.00000000 sec

===== CHANNEL f1 =====
NUC1 1H
P1 15.50 use
PL1 0.00 dB
SF01 500.1330885 MHz
SI 131072
SF 500.1300000 MHz
WDW EM
SSB 0
LB 0.30 Hz
GB 0
PC 1.00

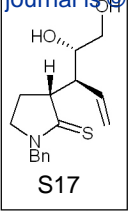




NAME ae014
EXPNO 2
PROCNO 1
Date_ 20071025
Time 10.48
INSTRUM drx500
PROBHD 5 mm Multinu
PULPROG zgpg30
TD 65536
SOLVENT CDC13
NS 50
DS 4
SWH 31446.541 Hz
FIDRES 0.479836 Hz
AQ 1.0420883 sec
RG 10321.3
DW 15.900 usec
DE 6.00 usec
TE 300.0 K
D1 2.00000000 sec
d11 0.03000000 sec
d12 0.00002000 sec

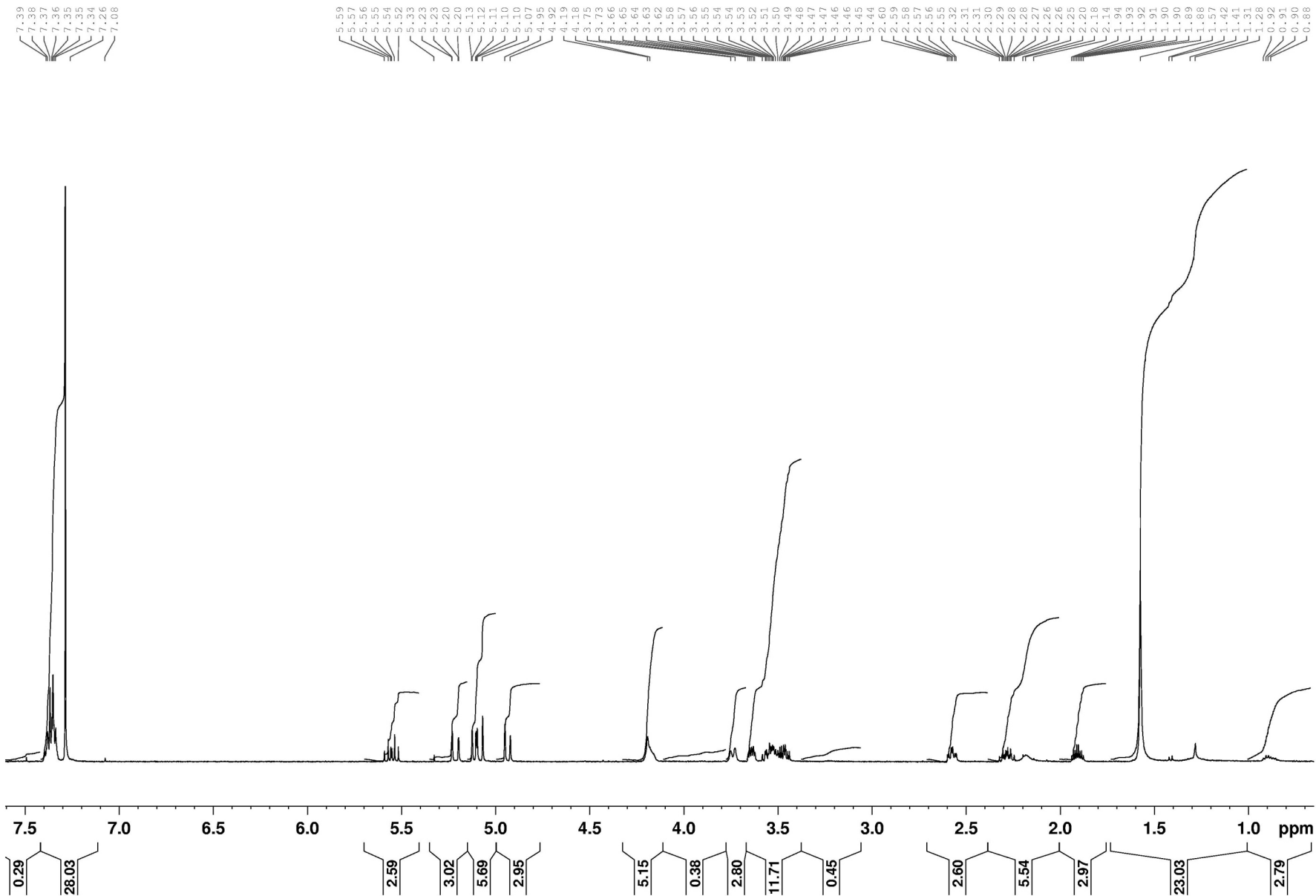
===== CHANNEL f1 =====
NUC1 13C
P1 5.10 usec
PL1 0.00 dB
SFO1 125.7715719 MHz

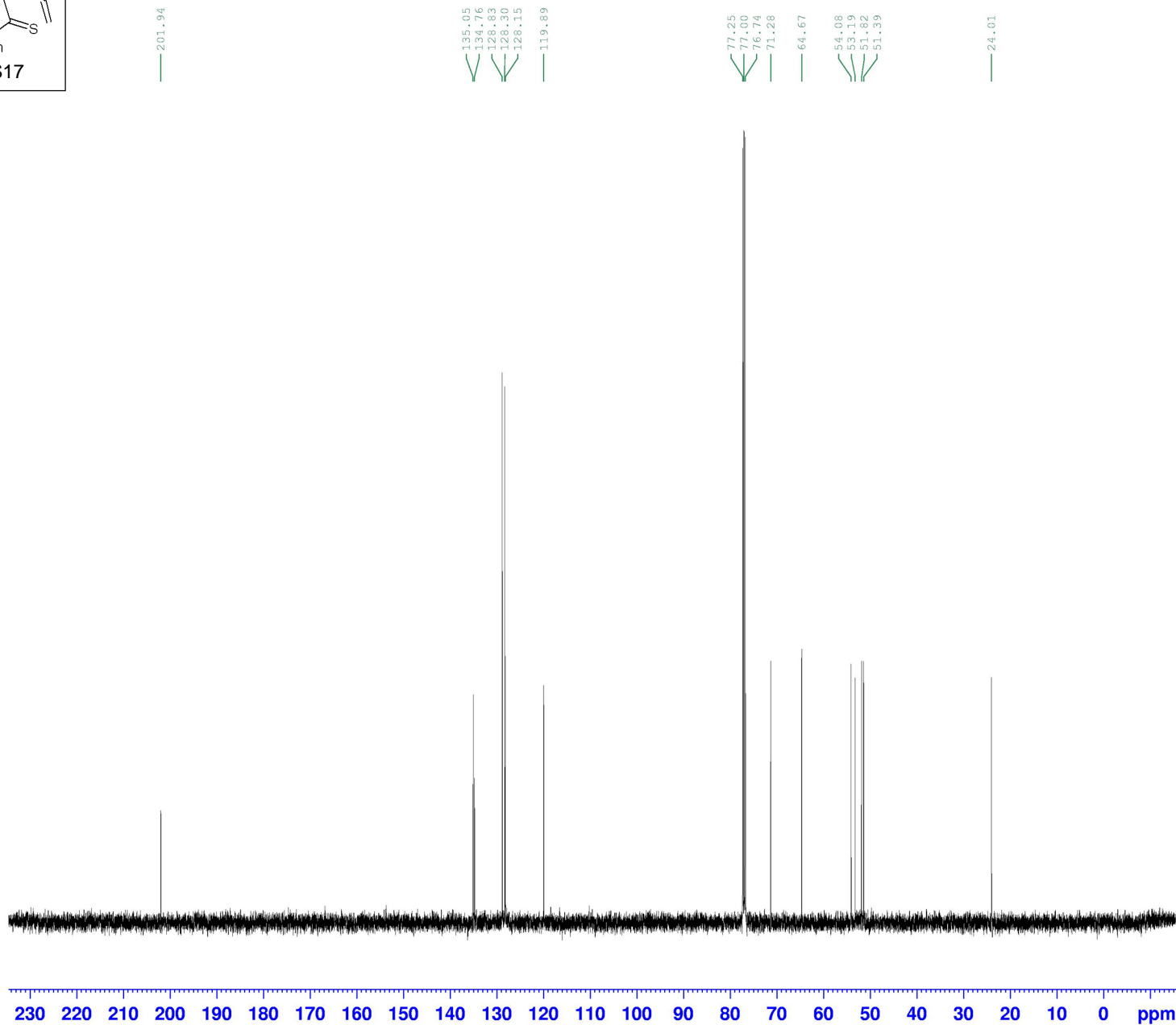
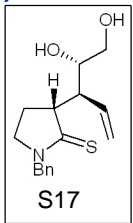
===== CHANNEL f2 =====
CPDPRG2 waltz16
NUC2 1H
PCPD2 95.00 usec
PL2 0.00 dB
PL12 19.00 dB
PL13 19.00 dB
SFO2 500.1320005 MHz
SI 131072
SF 125.7578002 MHz
WDW EM
SSB 0
LB 1.00 Hz
GB 0
PC 1.40



NAME Mar28-2008
EXPNO 20
PROCNO 1
Date_ 20080328
Time 22.05
INSTRUM drx500
PROBHD 5 mm Multinu
PULPROG zg30
TD 82642
SOLVENT CDCl3
NS 16
DS 2
SWH 10330.578 Hz
FIDRES 0.125004 Hz
AQ 3.9999712 sec
RG 912.3
DW 48.400 use
DE 6.00 use
TE 300.0 K
D1 1.00000000 sec

===== CHANNEL f1 ===
NUC1 1H
P1 15.50 use
PL1 0.00 dB
SF01 500.1330885 MHz
SI 65536
SF 500.1300000 MHz
WDW EM
SSB 0
LB 0.30 Hz
GB 0
PC 1.00

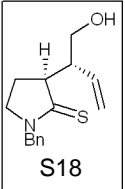




NAME ae012
EXPNO 2
PROCNO 1
Date_ 20071025
Time 11.16
INSTRUM drx500
PROBHD 5 mm Multinu
PULPROG zgpg30
TD 65536
SOLVENT CDC13
NS 88
DS 4
SWH 31446.541 Hz
FIDRES 0.479836 Hz
AQ 1.0420883 sec
RG 4597.6
DW 15.900 usec
DE 6.00 usec
TE 300.0 K
D1 2.00000000 sec
d11 0.03000000 sec
d12 0.00002000 sec

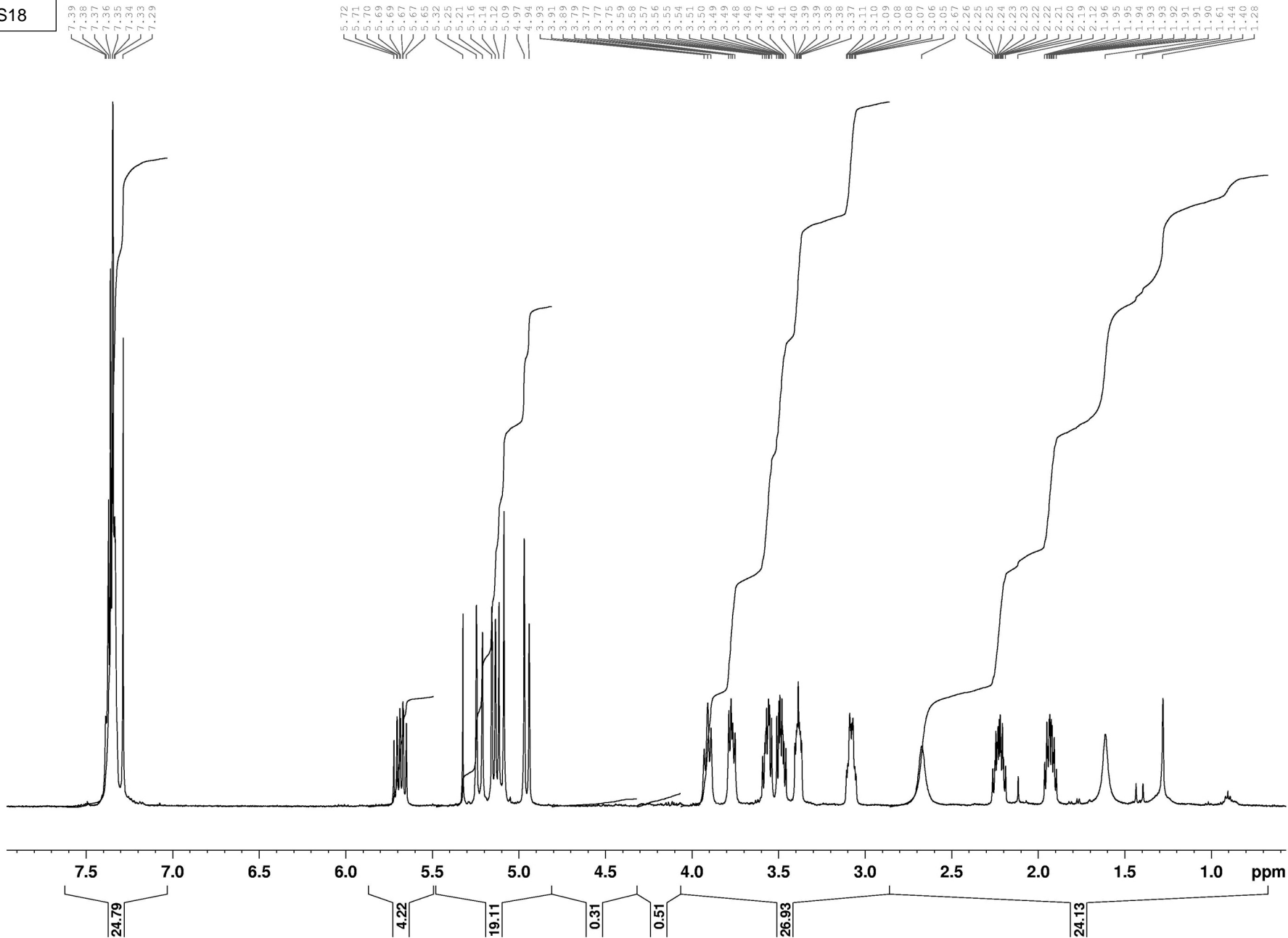
===== CHANNEL f1 =====
NUC1 13C
P1 5.10 usec
PL1 0.00 dB
SFO1 125.7715719 MHz

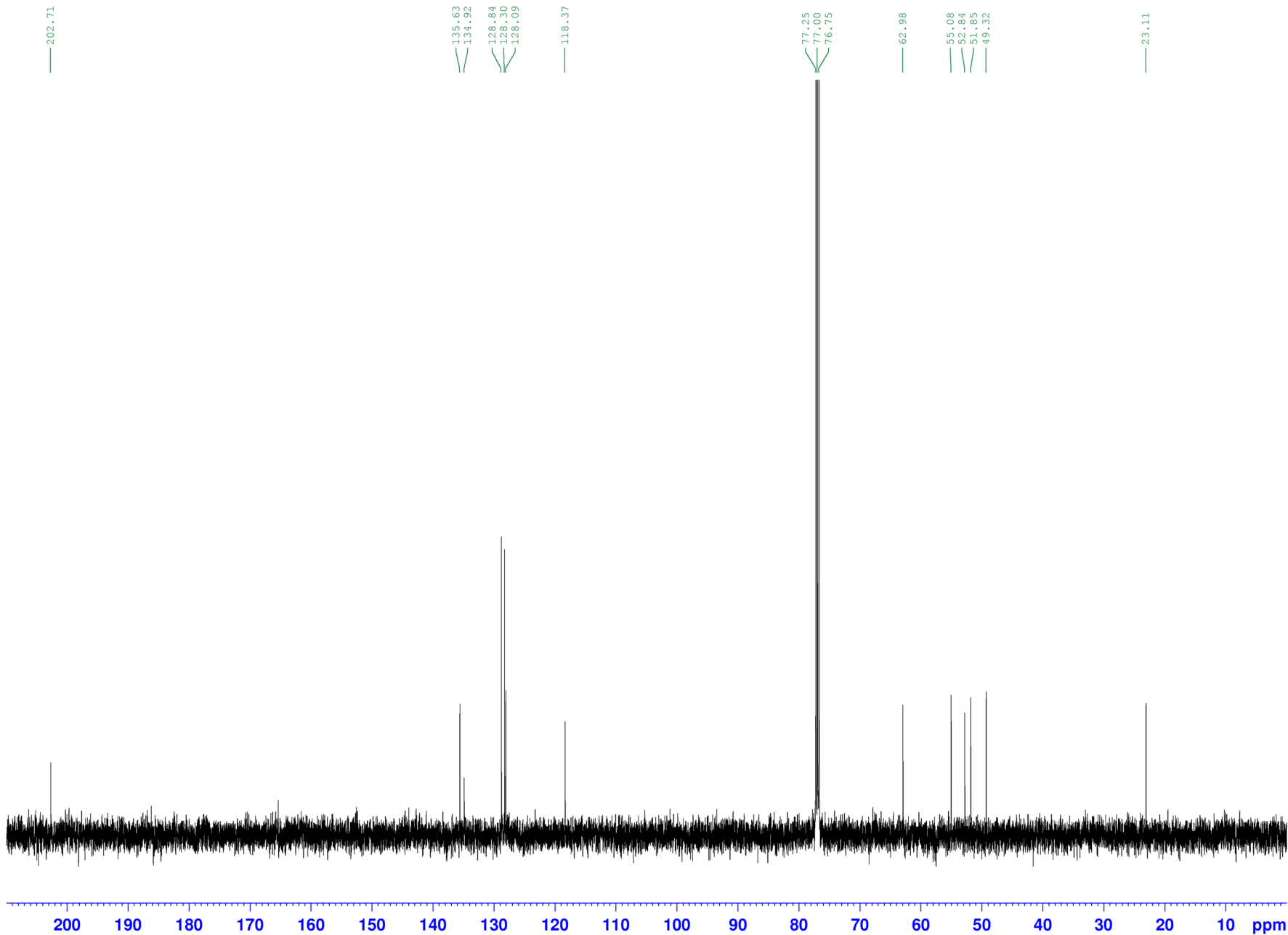
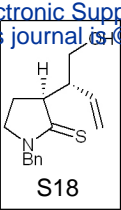
===== CHANNEL f2 =====
CPDPRG2 waltz16
NUC2 1H
PCPD2 95.00 usec
PL2 0.00 dB
PL12 19.00 dB
PL13 19.00 dB
SFO2 500.1320005 MHz
SI 131072
SF 125.7577968 MHz
WDW EM
SSB 0
LB 1.00 Hz
GB 0
PC 1.40



NAME ae076
EXPNO 2
PROCNO 1
Date_ 20080310
Time 14.45
INSTRUM drx500
PROBHD 5 mm Multinu
PULPROG zg30
TD 82642
SOLVENT CDCl3
NS 16
DS 2
SWH 10330.578 Hz
FIDRES 0.125004 Hz
AQ 3.9999712 sec
RG 512
DW 48.400 use
DE 6.00 use
TE 300.0 K
D1 1.00000000 sec

===== CHANNEL f1 =====
NUC1 1H
P1 15.50 use
PL1 0.00 dB
SF01 500.1330885 MHz
SI 131072
SF 500.1300000 MHz
WDW EM
SSB 0
LB 0.30 Hz
GB 0
PC 1.00





NAME	ae076
EXPNO	3
PROCNO	1
Date_	20080310
Time	14.50
INSTRUM	drx500
PROBHD	5 mm Multinu
PULPROG	zgpg30
TD	65536
SOLVENT	CDC13
NS	128
DS	4
SWH	31446.541 Hz
FIDRES	0.479836 Hz
AQ	1.0420883 sec
RG	13004
DW	15.900 use
DE	6.00 use
TE	300.0 K
D1	2.00000000 sec
d11	0.03000000 sec
d12	0.00002000 sec
===== CHANNEL f1 =====	
NUC1	13C
P1	5.00 use
PL1	0.00 dB
SFO1	125.7715719 MHz
===== CHANNEL f2 =====	
CPDPRG2	waltz16
NUC2	1H
PCPD2	95.00 use
PL2	0.00 dB
PL12	19.00 dB
PL13	19.00 dB
SFO2	500.1320005 MHz
SI	131072
SF	125.7577925 MHz
WDW	EM
SSB	0
LB	1.00 Hz
GB	0
PC	1.40