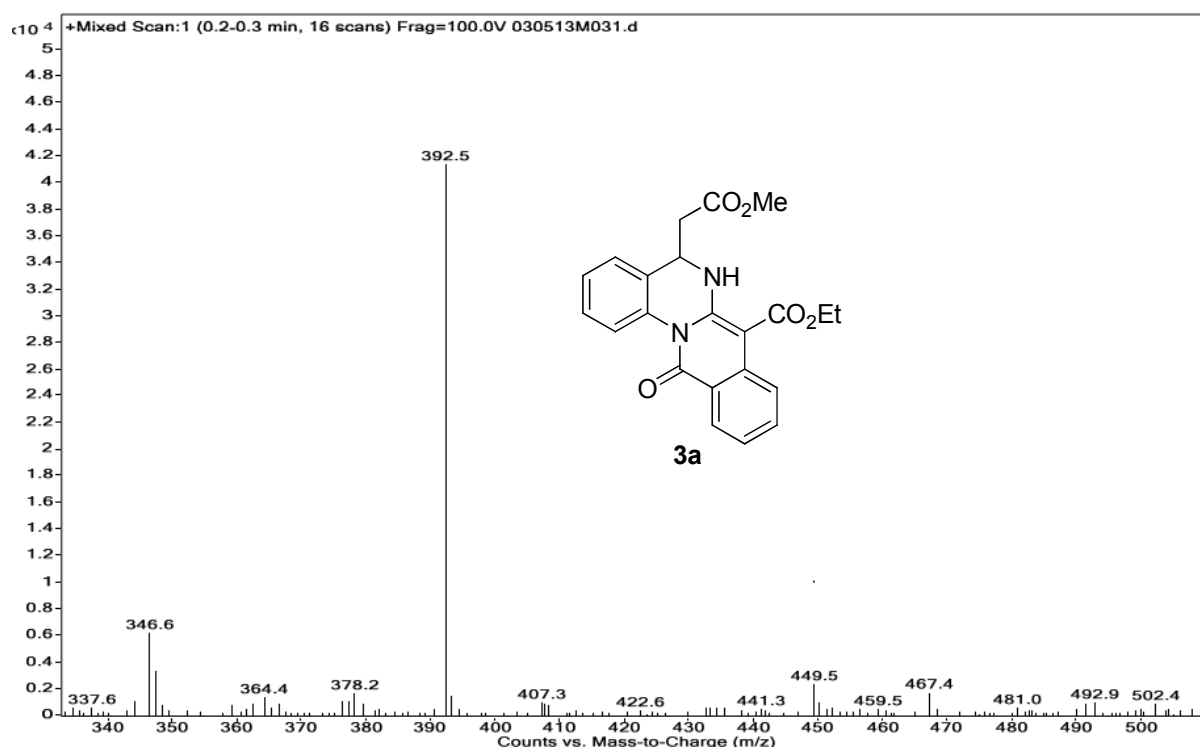
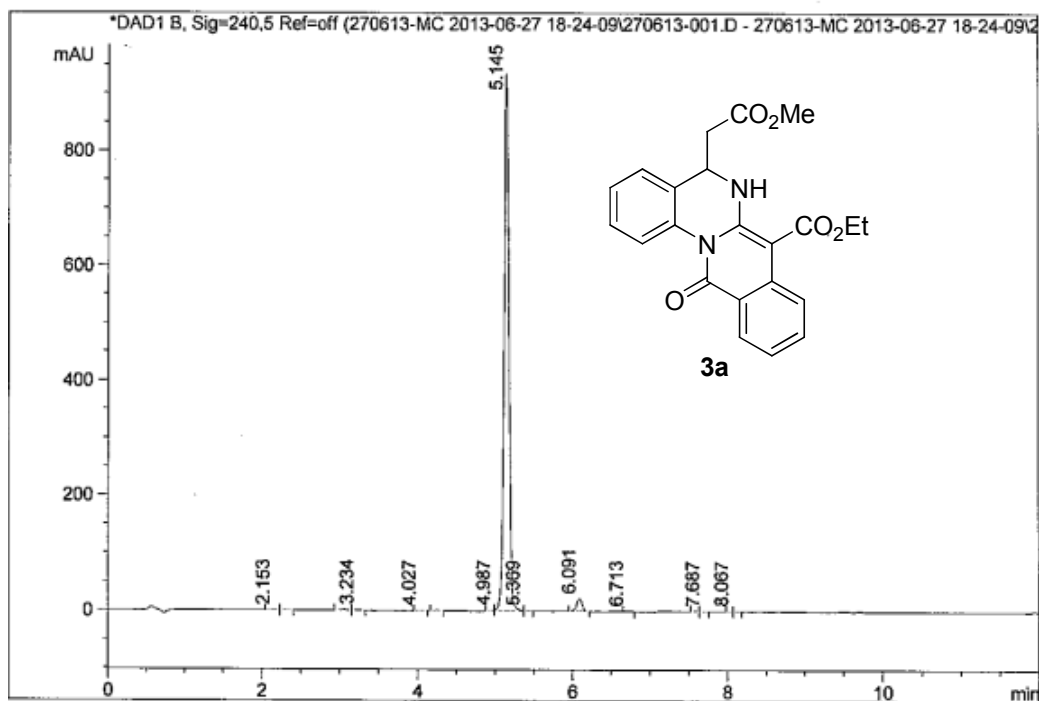


### Copies of Mass and HPLC spectra



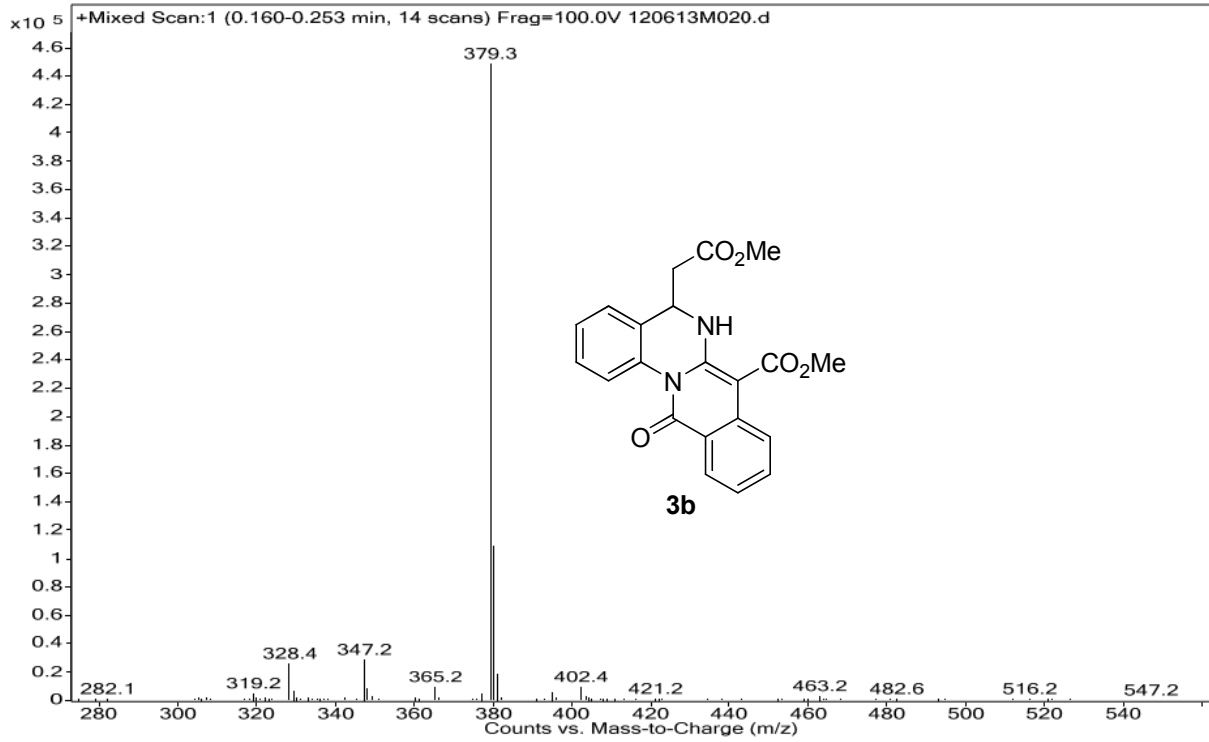
Injection Date : Thu, 27. Jun. 2013  
 Sample Name : ILS/ARJ/4/7  
 Acq Operator : RADHA  
 Acq. Method : D:\chem32\1\DATA\270613-MC 2013-06-27 18-24-09\C-18 ->  
 Analysis Method : D:\CHEM32\_002\1\METHODS\C-18 A50B50-GM.M  
 Method Info : Column : Symmetry C-18 75\*4.6mm,3.5µm  
 Mobile phase: A) 0.1% HCOOH in Water , B) ACN (gradient :  
 T/B%:0/50,0.5/50,6/98,10/98,10.5/50,12/50  
 Flow: 1.0 ml/min, Diluent: ACN:Water(90:10)

Seq Line : 4  
 Location : Vial 55  
 Inj. No. : 1  
 Inj. Vol. : 10 µl

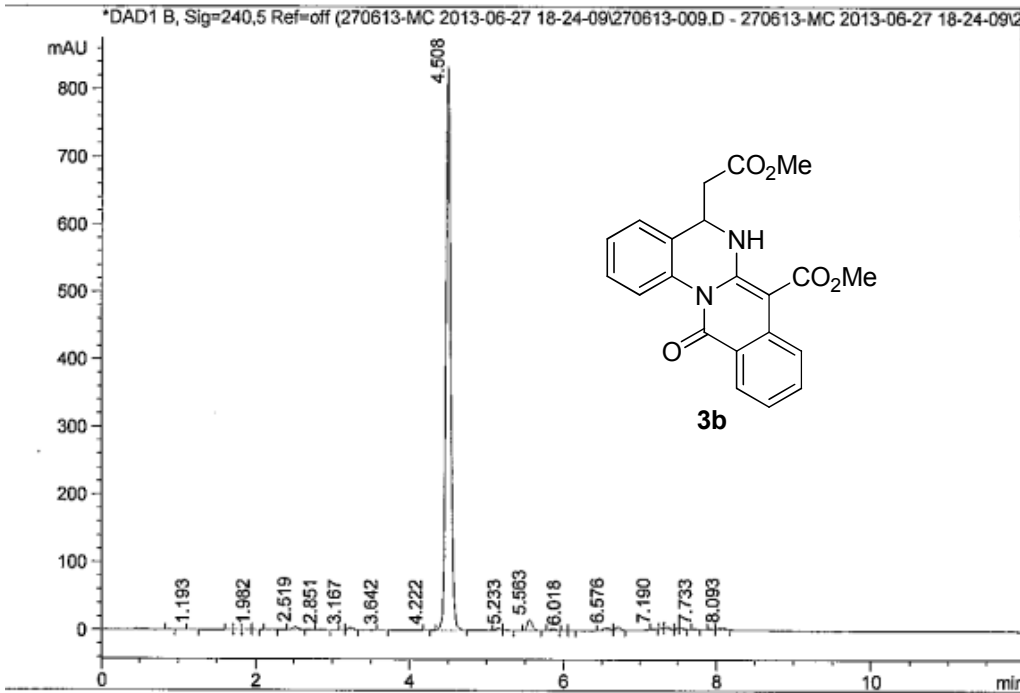


Signal 1: DAD1 B, Sig=240,5 Ref=off

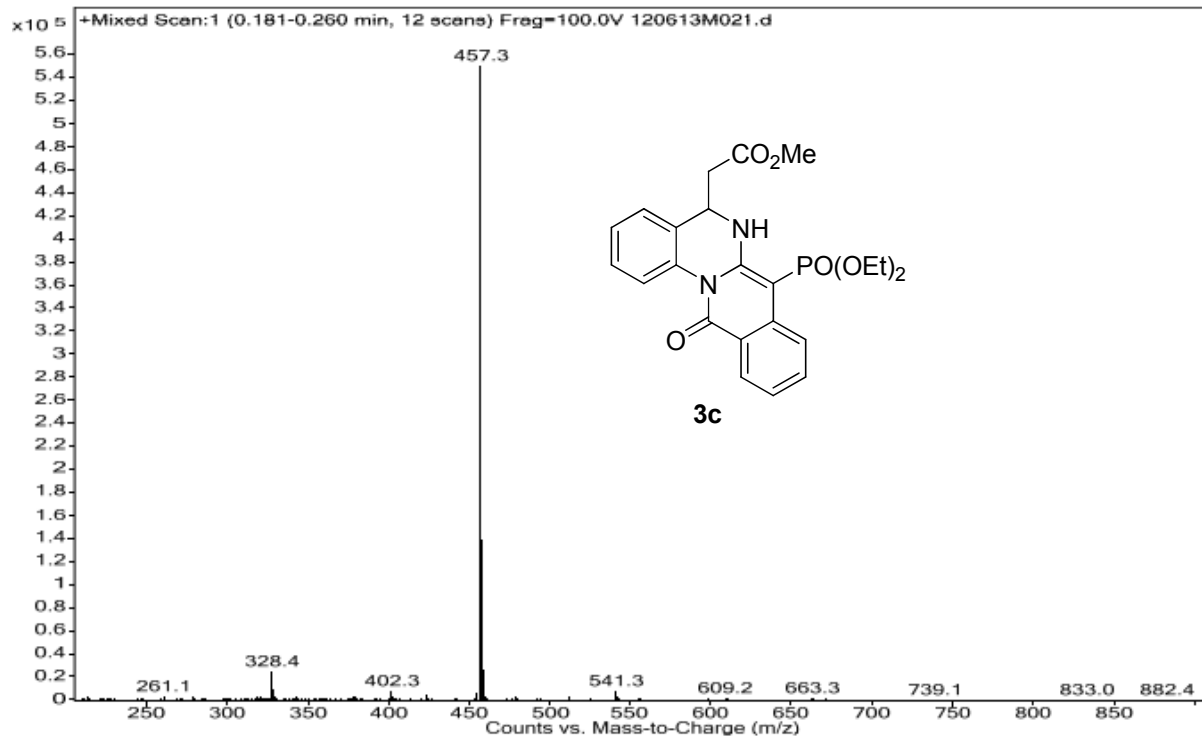
Peak #	RT [min]	Area	Area %
1	2.153	3.769	0.088
2	2.296	3.424	0.080
3	3.061	12.616	0.296
4	3.234	7.844	0.184
5	4.027	2.635	0.062
6	4.254	3.877	0.091
7	4.987	4.508	0.106
8	5.145	4112.732	96.383
9	5.369	2.093	0.049
10	6.091	103.477	2.425
11	6.713	3.854	0.090
12	7.587	1.910	0.045



Injection Date : Thu, 27. Jun. 2013  
 Sample Name : ILS/ARJ/4/8  
 Acq Operator : RADHA  
 Acq. Method : D:\chem32\1\DATA\270613-MC 2013-06-27 18-24-09\C-18 ->  
 Analysis Method : D:\CHEM32\_002\1\METHODS\C-18 A50B50-GM.M  
 Method Info : Column : Symmetry C-18 75\*4.6mm,3.5µm  
 Mobile phase: A) 0.1% HCOOH in Water , B) ACN (gradient )  
 T/B%:0/50,0.5/50,6/98,10/98,10.5/50,12/50  
 Flow: 1.0 ml/min, Diluent: ACN:Water(90:10)

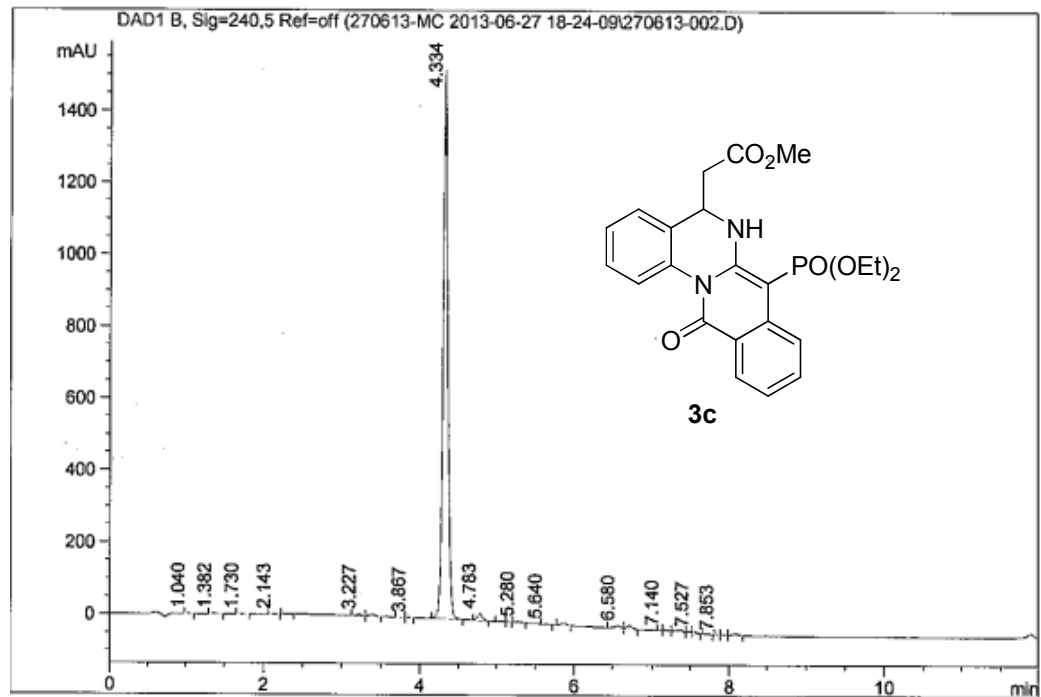


Peak #	RT [min]	Area	Area %
13	4.222	1.095	0.029
14	4.508	3555.338	93.067
15	5.155	15.418	0.404
16	5.233	5.989	0.157
17	5.563	67.777	1.774
18	5.871	11.824	0.310
19	6.018	1.586	0.042
20	6.096	1.571	0.041
21	6.576	24.082	0.630
22	6.718	25.350	0.664
23	7.190	3.480	0.091
24	7.313	3.784	0.099
25	7.367	12.120	0.317
26	7.520	4.957	0.130
27	7.549	7.164	0.188

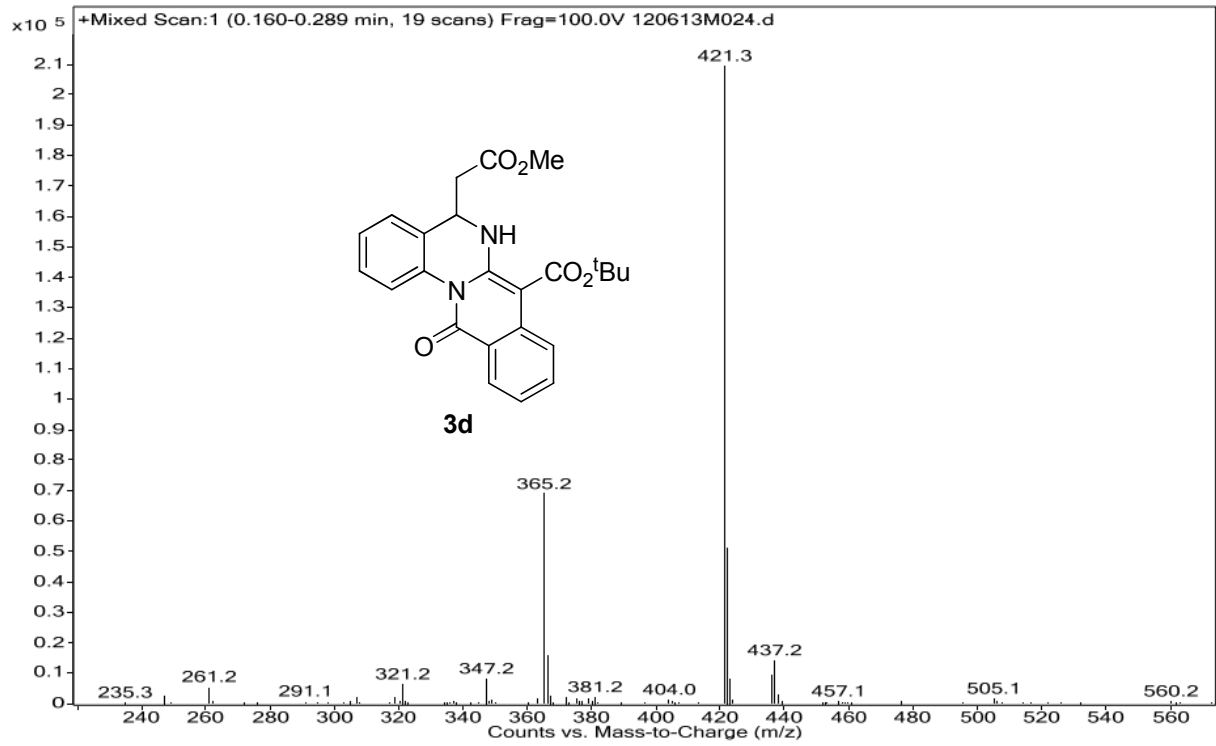


Injection Date : Thu, 27. Jun. 2013  
 Sample Name : ILS/ARJ/4/9  
 Acq Operator : RADHA  
 Acq. Method : D:\chem32\1\DATA\270613-MC 2013-06-27 18-24-09\C-18 ->  
 Analysis Method : D:\CHEM32\_002\1\METHODS\C-18 A50B50-GM.M  
 Method Info : Column : Symmetry C-18 75\*4.6mm,3.5µm  
 Mobile phase: A) 0.1% HCOOH in Water , B) ACN (gradient )  
 T/B%:0/50,0.5/50,6/98,10/98,10.5/50,12/50  
 Flow: 1.0 ml/min, Diluent: ACN:Water(90:10)

Seq Line : 6  
 Location : Vial 56  
 Inj. No. : 1  
 Inj. Vol. : 10 µl

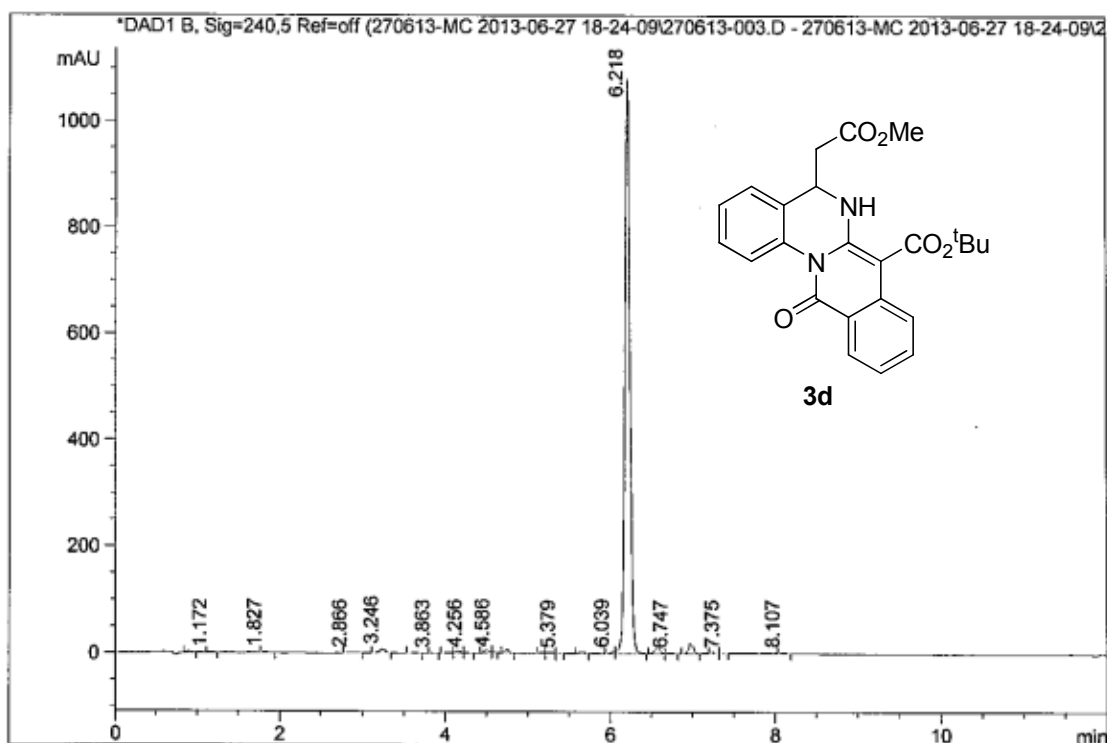


Peak #	RT [min]	Area	Area %
1	1.040	3.235	0.046
2	1.382	6.996	0.100
3	1.730	3.961	0.056
4	2.143	2.270	0.032
5	2.310	1.422	0.020
6	3.227	17.270	0.246
7	3.393	25.007	0.356
8	3.753	2.609	0.037
9	3.867	2.724	0.039
10	4.334	6623.116	94.279
11	4.783	79.991	1.139
12	5.073	5.001	0.071
13	5.133	1.790	0.025
14	5.280	10.680	0.152
15	5.640	3.094	0.044
16	5.873	22.579	0.321
17	6.580	44.412	0.632
18	6.720	48.563	0.691
19	7.140	4.010	0.057
20	7.193	16.121	0.229
21	7.367	36.118	0.514
22	7.527	9.003	0.128
23	7.553	12.228	0.174
24	7.740	5.596	0.080
25	7.853	1.759	0.025
26	7.940	7.374	0.105



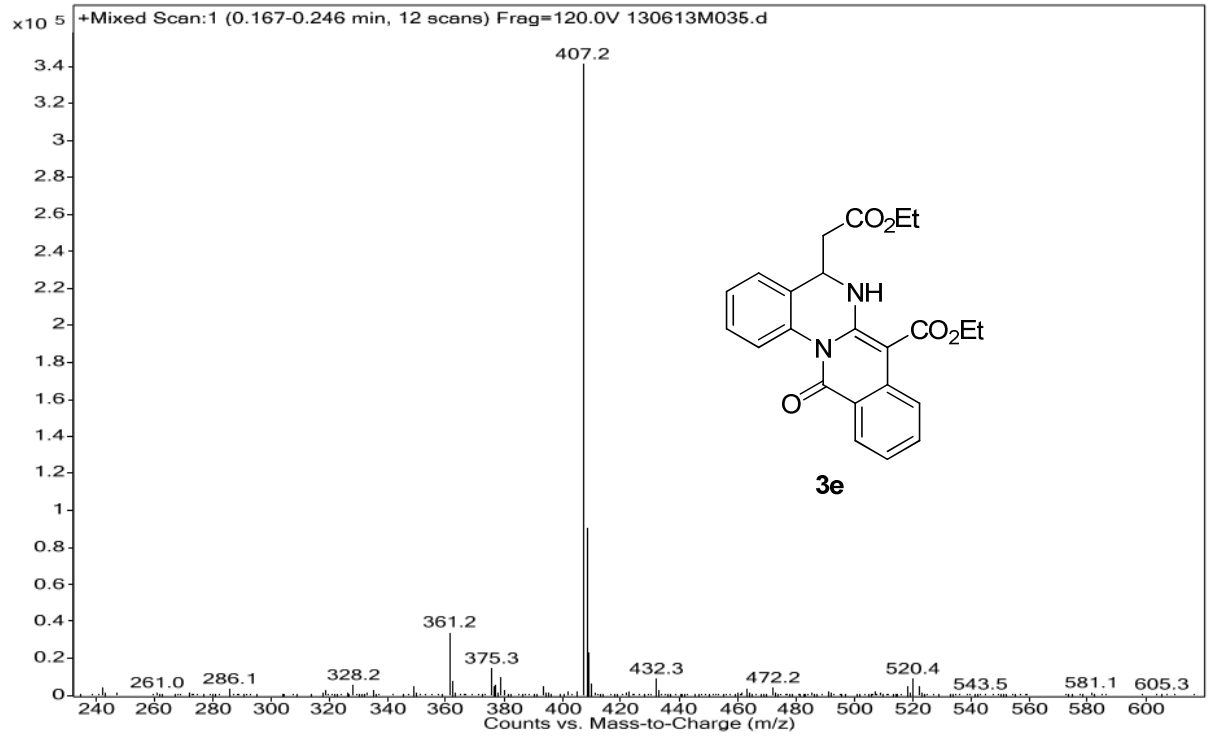
Injection Date : Thu, 27. Jun. 2013  
 Sample Name : ILS/ARJ/4/19  
 Acq Operator : RADHA  
 Acq. Method : D:\chem32\1\DATA\270613-MC 2013-06-27 18-24-09\C-18 ->  
 Analysis Method : D:\CHEM32\_002\1\METHODS\C-18 A50B50-GM.M  
 Method Info : Column : Symmetry C-18 75\*4.6mm, 3.5µm  
 Mobile phase: A) 0.1% HCOOH in Water , B) ACN (gradient )  
 T/B%:0/50,0.5/50,6/98,10/98,10.5/50,12/50  
 Flow: 1.0 ml/min, Diluent: ACN:Water(90:10)

Seq Line : 7  
 Location : Vial 57  
 Inj. No. : 1  
 Inj. Vol. : 10 µl



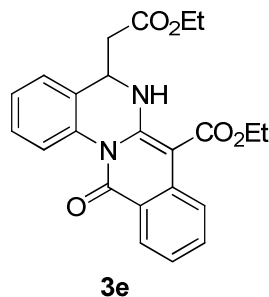
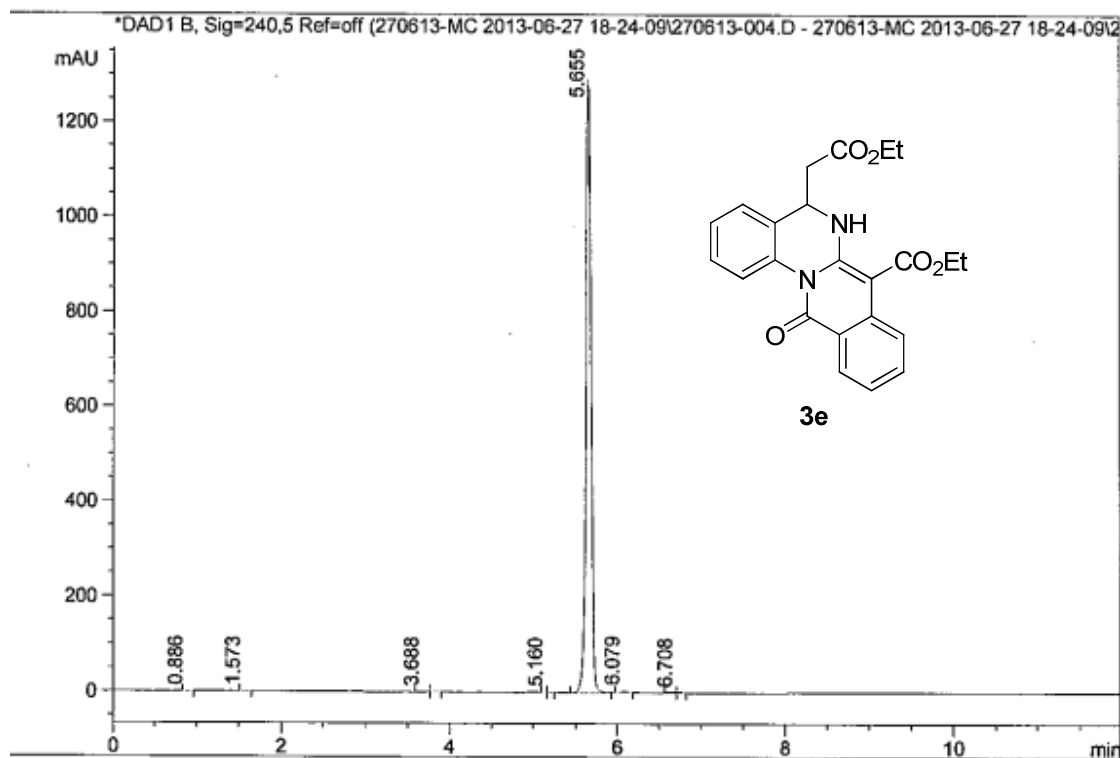
Peak #	RT [min]	Area	Area %
10	4.256	4.152	0.085
11	4.500	23.649	0.487
12	4.586	3.196	0.066
13	4.748	21.904	0.451
14	5.169	5.477	0.113
15	5.268	12.703	0.261
16	5.379	1.684	0.035
17	5.655	14.256	0.293
18	6.039	8.340	0.172
19	6.218	4524.853	93.112
20	6.578	53.994	1.111
21	6.747	4.323	0.089
22	6.986	76.926	1.583
23	7.258	2.666	0.055





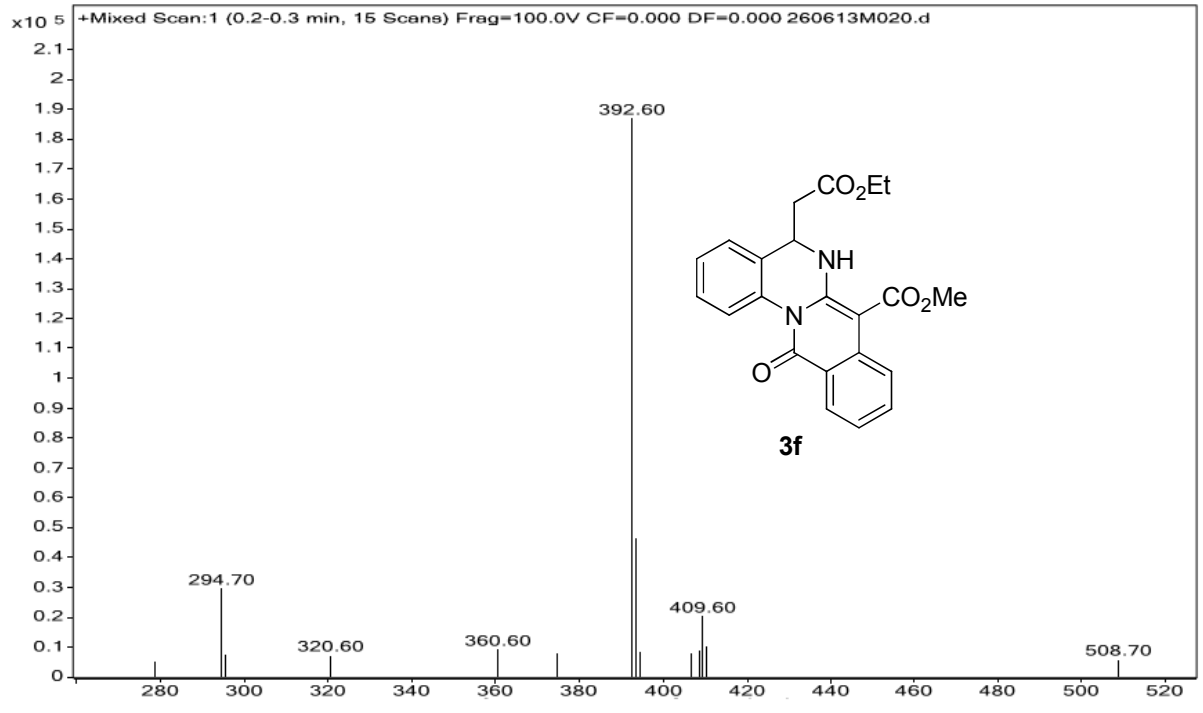
Injection Date : Thu, 27. Jun. 2013  
 Sample Name : ILS/ARJ/4/26  
 Acq Operator : RADHA  
 Acq. Method : D:\chem32\1\DATA\270613-MC 2013-06-27 18-24-09\C-18 ->  
 Analysis Method : D:\CHEM32\_002\1\METHODS\C-18 A50B50-GM.M  
 Method Info : Column : Symmetry C-18 75\*4.6mm,3.5µm  
 Mobile phase: A) 0.1% HCOOH in Water , B) ACN (gradient )  
 T/B%:0/50,0.5/50,6/98,10/98,10.5/50,12/50  
 Flow: 1.0 ml/min, Diluent: ACN:Water(90:10)

Seq Line : 8  
 Location : Vial 58  
 Inj. No. : 1  
 Inj. Vol. : 5 µl



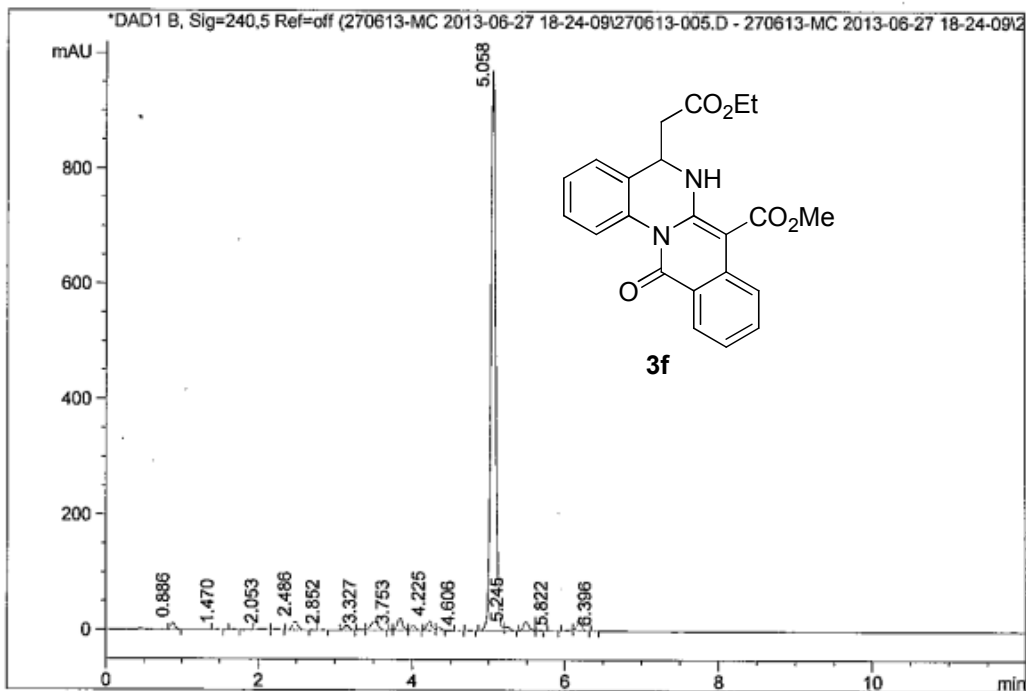
Signal 1: DAD1 B, Sig=240,5 Ref=off

Peak #	RT [min]	Area	Area %
1	0.886	1.692	0.031
2	1.573	1.273	0.023
3	3.688	2.461	0.045
4	3.841	1.456	0.027
5	5.160	1.198	0.022
6	5.198	1.955	0.036
7	5.655	5419.660	99.394
8	6.079	15.761	0.289
9	6.651	5.412	0.099
10	6.708	1.828	0.034



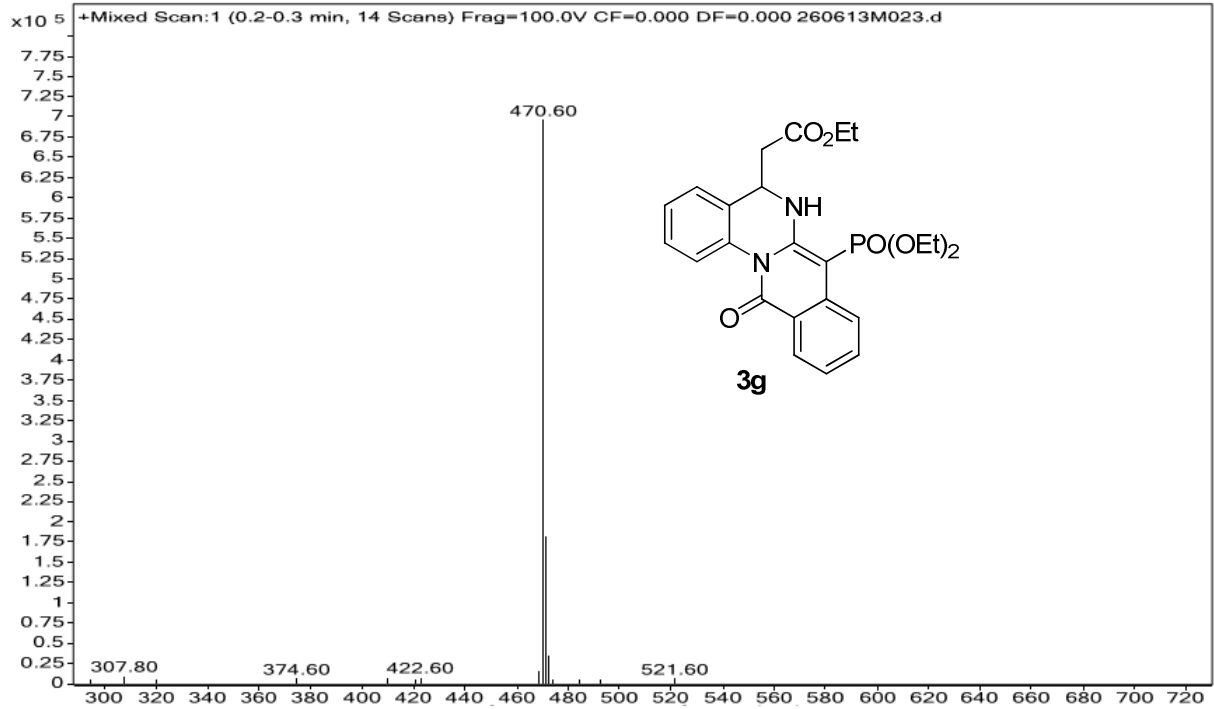
Injection Date : Thu, 27. Jun. 2013  
 Sample Name : ILS/ARJ/4/27  
 Acq Operator : RADHA  
 Acq. Method : D:\chem32\1\DATA\270613-MC 2013-06-27 18-24-09\C-18 ->  
 Analysis Method : D:\CHEM32\_002\1\METHODS\C-18 A50B50-GM.M  
 Method Info : Column : Symmetry C-18 75\*4.6mm,3.5µm  
 Mobile phase: A) 0.1% HCOOH in Water , B) ACN (gradient )  
 T/B%:0/50,0.5/50,6/98,10/98,10.5/50,12/50  
 Flow: 1.0 ml/min, Diluent: ACN:Water(90:10)

seq Line : 9  
 Location : Vial 59  
 Inj. No. : 1  
 Inj. Vol. : 5 µl



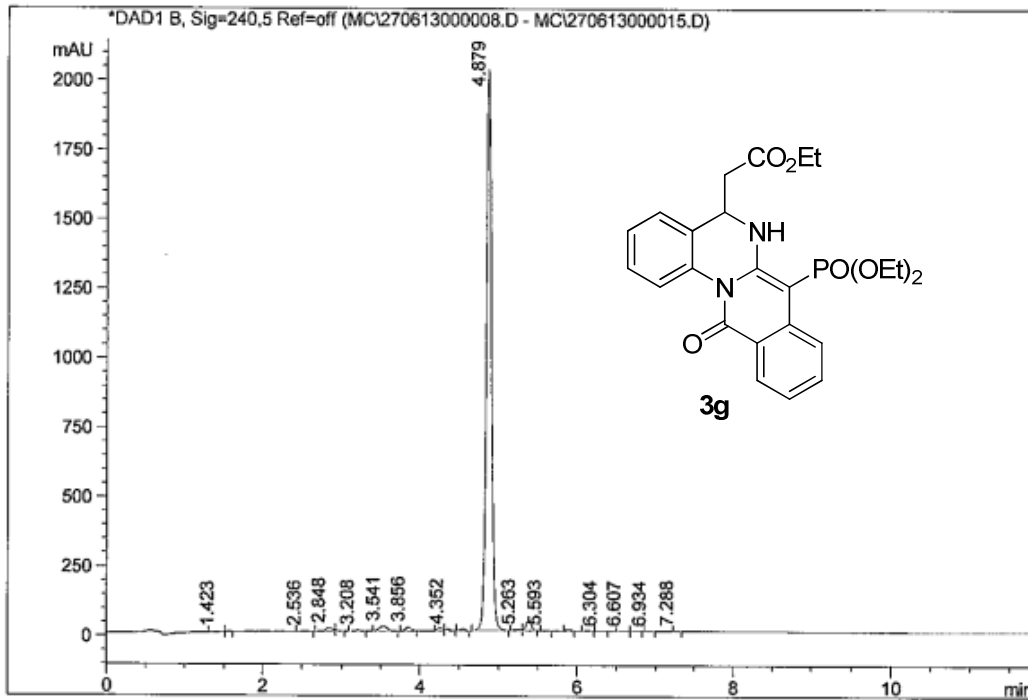
Signal 1: DAD1 B, Sig=240,5 Ref=off

Peak #	RT [min]	Area	Area %	Peak #	RT [min]	Area	Area %
13	4.016	33.105	0.687	14	4.225	23.643	0.424
14	0.886	37.797	0.784	15	4.353	17.878	0.371
15	1.470	3.598	0.075	16	4.606	1.380	0.029
16	1.678	3.700	0.077	17	4.749	5.139	0.107
17	2.053	9.008	0.187	18	5.058	4330.458	91.696
18	2.241	10.078	0.209	19	5.245	28.228	0.586
19	2.486	23.869	0.450	20	5.486	23.525	0.422
20	2.852	3.060	0.063	21	5.653	4.947	0.103
21	3.156	34.421	0.714	22	5.822	2.338	0.049
22	3.327	5.200	0.108	23	6.083	11.514	0.239
23	3.513	91.685	1.902	24	6.187	33.875	0.699
24	3.753	1.613	0.033	25	6.396	1.431	0.030
25	3.842	94.431	1.959				



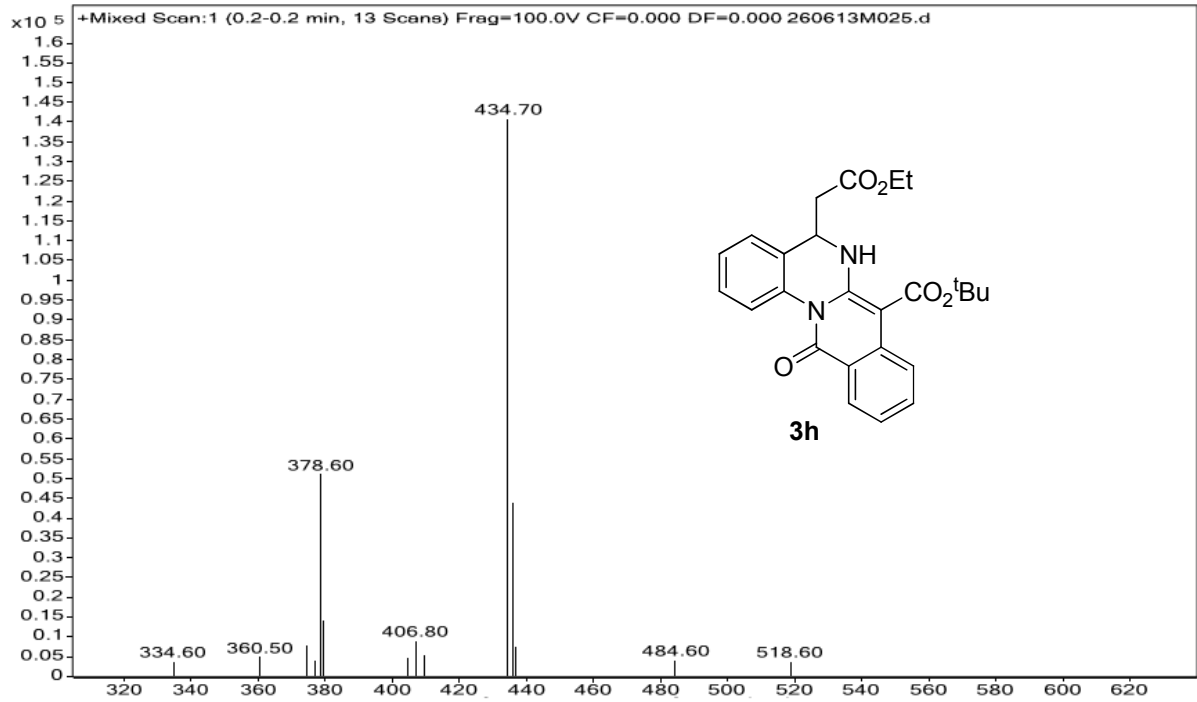
Injection Date : Thu, 27. Jun. 2013  
 Sample Name : ILS/ARJ/4/32  
 Acq Operator : RADHA  
 Acq. Method : D:\CHEM32\_002\1\METHODS\C-18 A50B50-GM.M  
 Analysis Method : D:\CHEM32\_002\1\METHODS\C-18 A50B50-GM.M  
 Method Info : Column : Symmetry C-18 75\*4.6mm,3.5µm  
 Mobile phase: A) 0.1% HCOOH in Water , B) ACN (gradient )  
 T/B%:0/50,0.5/50,6/98,10/98,10.5/50,12/50  
 Flow: 1.0 ml/min, Diluent: ACN:Water(90:10)

Seq Line : 0  
 Location : Vial 77  
 Inj. No. : 0  
 Inj. Vol. : 5 µl



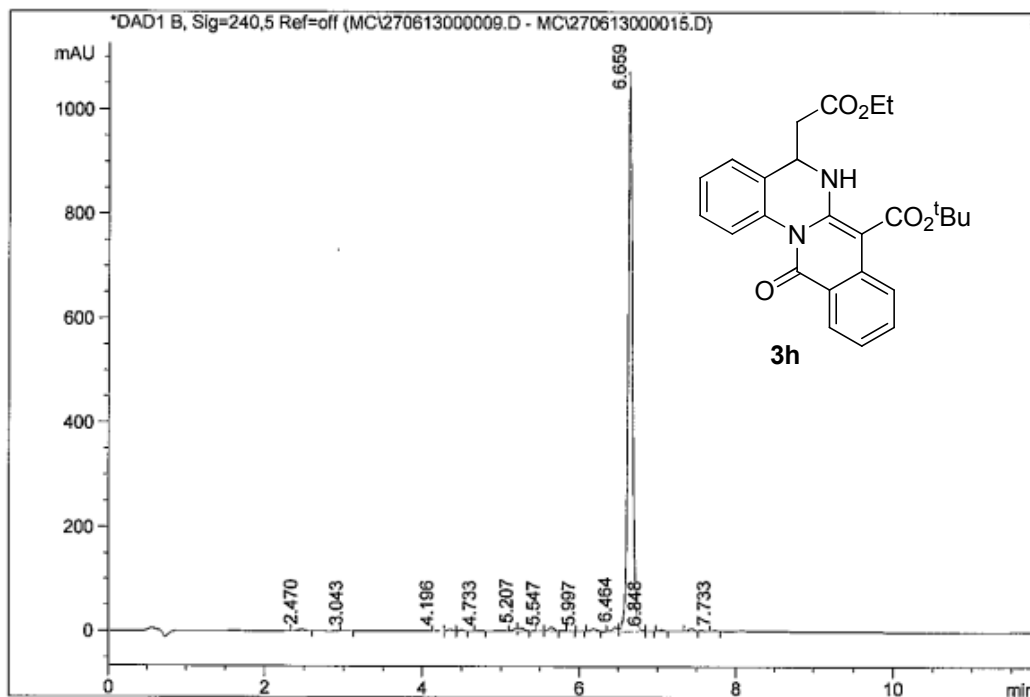
Signal 1: DAD1 B, Sig=240,5 Ref=off

Peak #	RT [min]	Area	Area %	Peak #	RT [min]	Area	Area %
1	1.423	7.018	0.071	13	5.263	21.307	0.217
2	1.561	2.366	0.024	14	5.385	186.534	1.898
3	2.536	7.908	0.080	15	5.593	12.081	0.123
4	2.848	70.908	0.722	16	5.896	26.095	0.266
5	2.926	12.100	0.123	17	6.140	8.585	0.087
6	3.208	20.900	0.213	18	6.304	2.331	0.024
7	3.541	121.863	1.240	19	6.607	6.660	0.068
8	3.856	66.339	0.675	20	6.740	6.423	0.065
9	4.262	42.544	0.433	21	6.934	3.216	0.033
10	4.352	21.515	0.219	22	7.288	2.937	0.030
11	4.548	28.072	0.286				
12	4.879	9148.242	93.103				



Injection Date : Thu, 27. Jun. 2013  
 Sample Name : ILS/ARJ/4/34  
 Acq Operator : RADHA  
 Acq. Method : D:\CHEM32\_002\1\METHODS\C-18 A50B50-GM.M  
 Analysis Method : D:\CHEM32\_002\1\METHODS\C-18 A50B50-GM.M  
 Method Info : Column : Symmetry C-18 75\*4.6mm,3.5µm  
 Mobile phase: A) 0.1% HCOOH in Water , B) ACN (gradient )  
 T/B%:0/50,0.5/50,6/98,10/98,10.5/50,12/50  
 Flow: 1.0 ml/min, Diluent: ACN:Water(90:10)

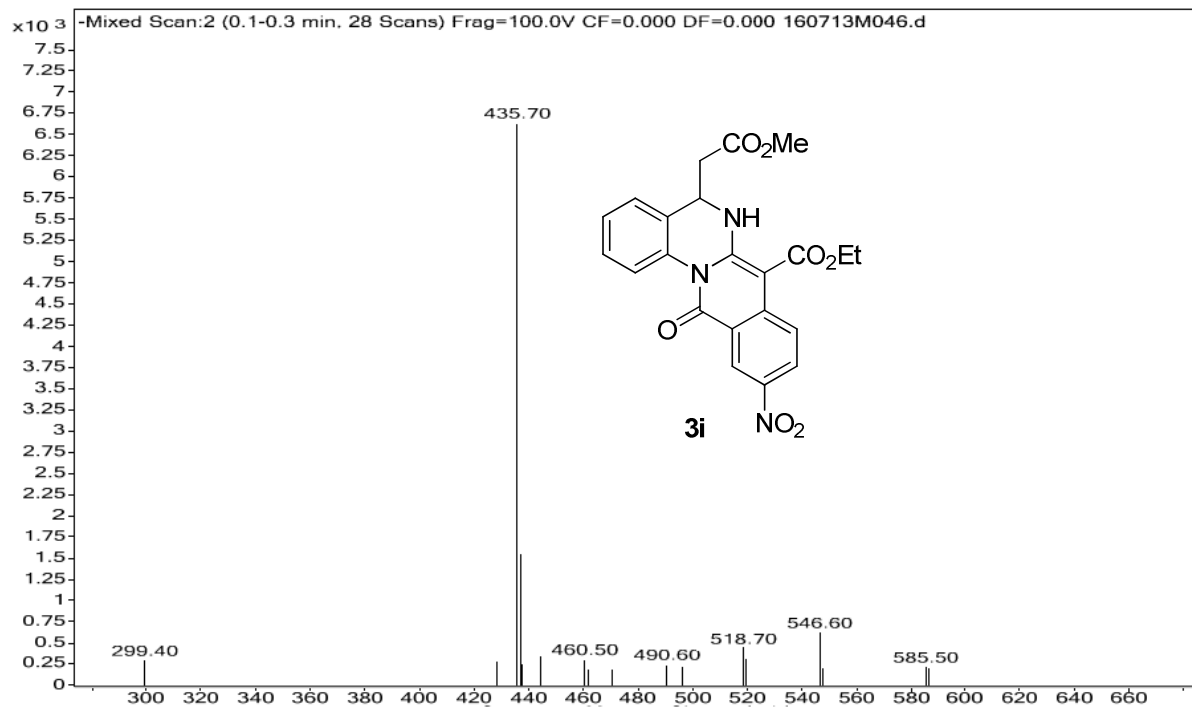
Seq Line : U  
 Location : Vial 78  
 Inj. No. : 0  
 Inj. Vol. : 5 µl



Signal 1: DAD1 B, Sig=240,5 Ref=off

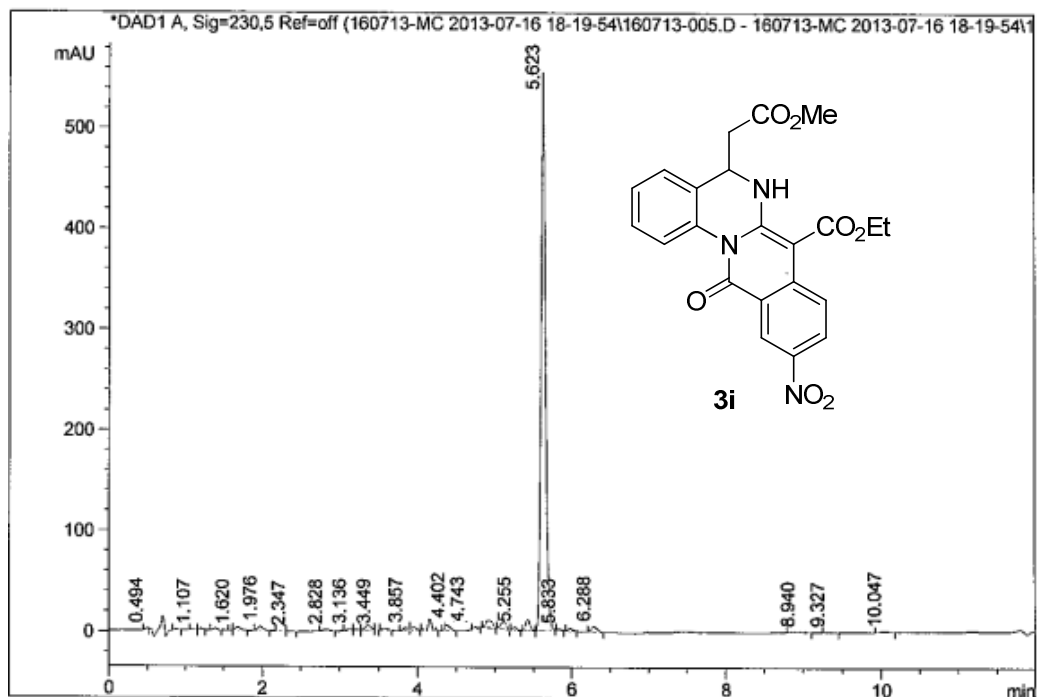
Peak #	RT [min]	Area	Area %
1	2.470	16.971	0.365
2	3.043	4.057	0.087
3	4.196	3.275	0.070
4	4.356	13.019	0.280
5	4.499	6.373	0.137
6	4.733	3.187	0.069
7	5.207	14.768	0.318
8	5.258	33.975	0.731
9	5.547	2.370	0.051
10	5.648	34.821	0.749
11	5.893	1.756	0.038
12	5.997	1.104	0.024
13	6.181	22.445	0.483
14	6.464	34.563	0.743
15	6.659	4424.765	95.141
16	6.848	3.166	0.068
17	7.056	7.778	0.167
18	7.434	20.720	0.446
19	7.733	1.656	0.036



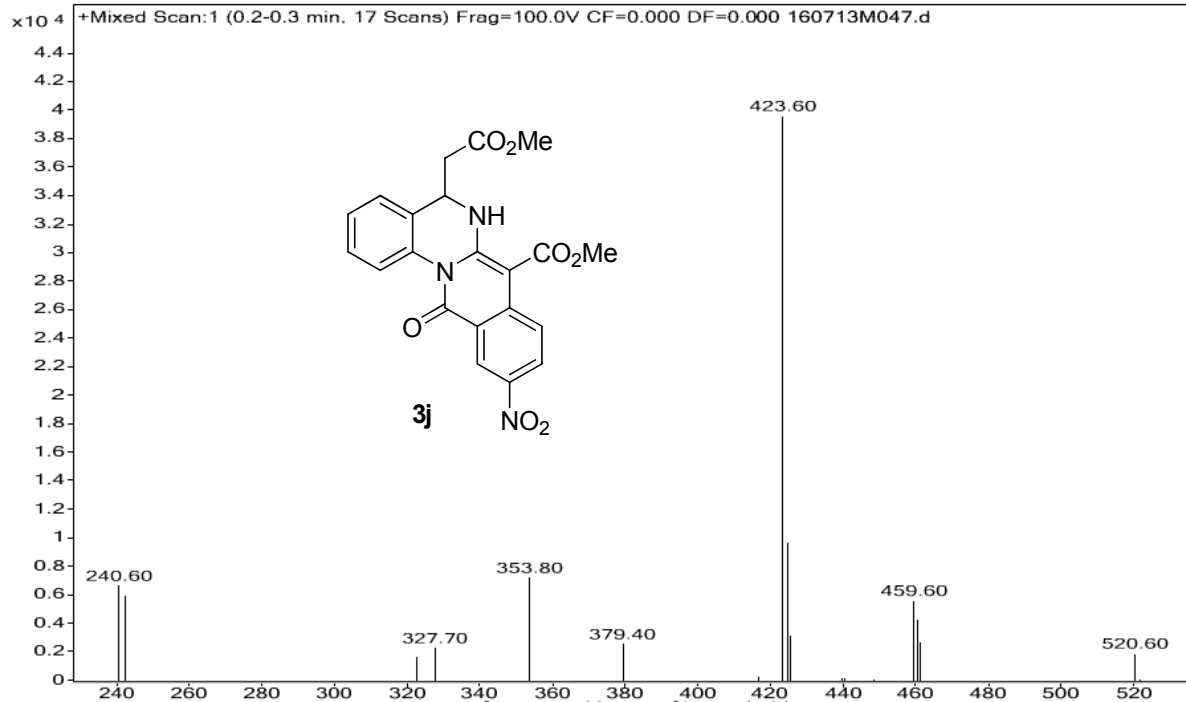


Injection Date : Tue, 16. Jul. 2013  
 Sample Name : ILS/ARJ/4/43  
 Acq Operator : RADHA  
 Acq. Method : D:\chem32\1\DATA\160713-MC 2013-07-16 18-19-54\C-18 ->  
 Analysis Method : D:\CHEM32\_002\1\METHODS\C-18 A50B50-GM.M  
 Method Info : Column : Symmetry C-18 75\*4.6mm,3.5µm  
 Mobile phase: A) 0.1% HCOOH in Water , B) ACN (gradient )  
 T/B%:0/50,1.0/50,6/98,10/98,10.5/50,12/50  
 Flow: 1.0 ml/min, Diluent: ACN:Water(90:10)

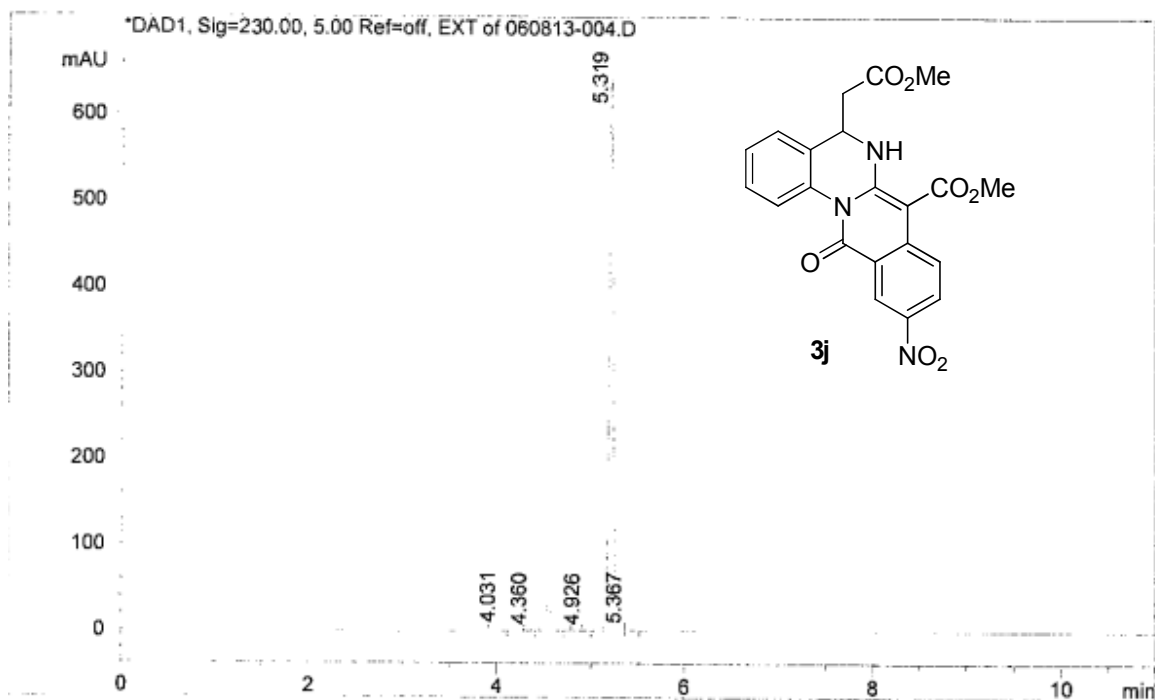
Seq Line : 3  
 Location : Vial 13  
 Inj. No. : 1  
 Inj. Vol. : 5 µl



Peak #	RT [min]	Area	Area %
13	3.209	4.119	0.149
14	3.368	23.600	0.855
15	3.449	1.043	0.038
16	3.580	8.845	0.320
17	3.857	14.548	0.527
18	3.945	13.224	0.479
19	4.156	1.028	0.041
20	4.402	1.388	0.224
21	4.743	7.435	0.269
22	4.927	41.131	1.490
23	5.113	35.347	1.281
24	5.255	12.500	0.453
25	5.425	44.642	1.617
26	5.623	2882.300	91.088
27	5.833	3.897	0.141

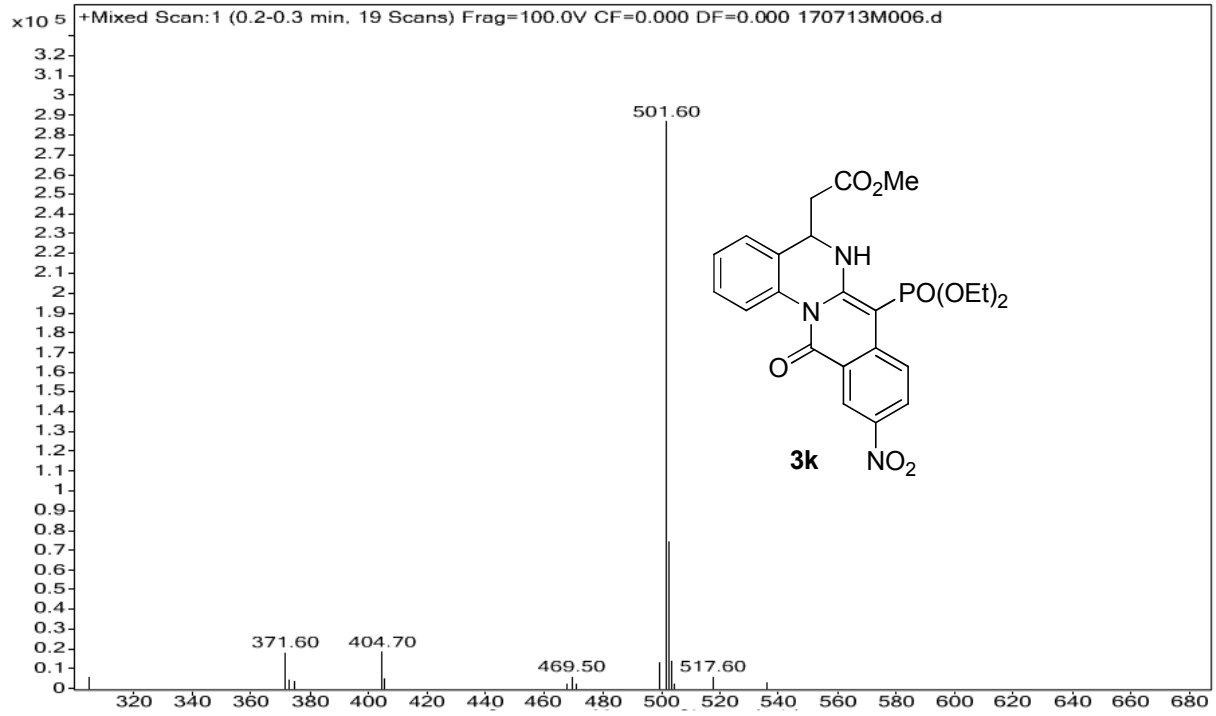


Injection Date : Tue, 6. Aug. 2013  
 Sample Name : ILS-ARJ-4-44  
 Acq Operator : RADHA  
 Acq. Method : D:\chem32\1\DATA\060813-MC 2013-08-06 19-05-44\C-18 ->  
 Analysis Method : D:\CHEM32\_002\1\METHODS\C-18 A80B20GM.M  
 Method Info : Column:Symmetry C-18 75\*4.6mm,3.5µ  
 Mobile phase: A) 0.1% HCOOH in Water , B) ACN (gradient )  
 T/B%:0/50,1.0/50,6/98,10/98,10.5/50,12/50  
 Flow: 1.0 ml/min, Diluent: ACN:Water(90:10)



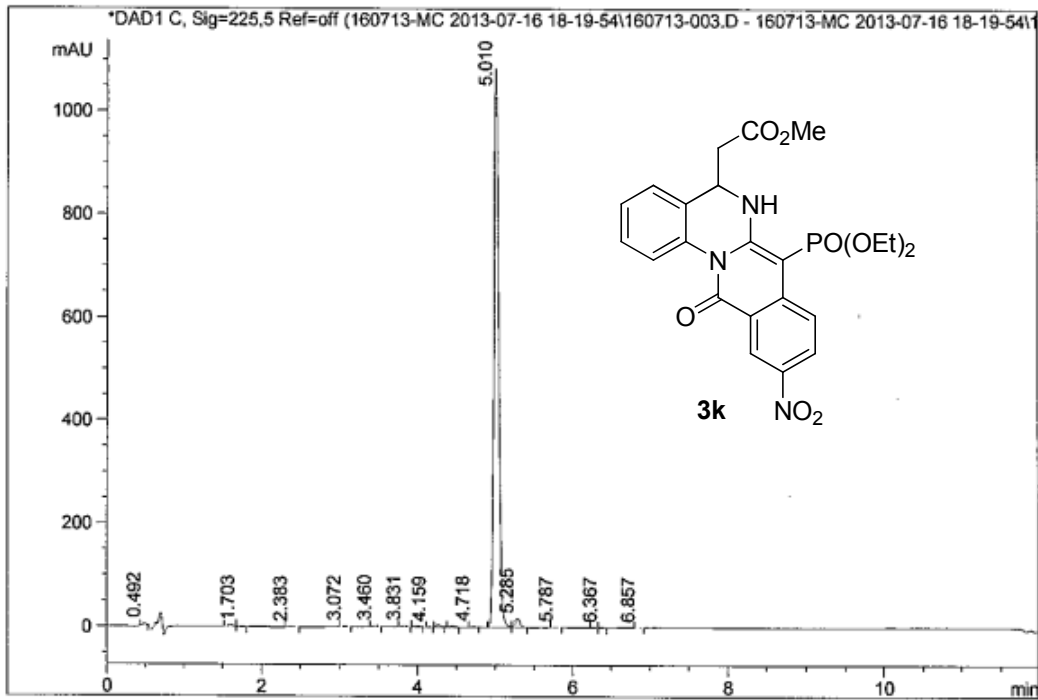
Signal 1: DAD1, Sig=230.00, 5.00 Ref=off, EXT

Peak #	RT [min]	Area	Area %
1	4.031	11.022	0.506
2	4.360	1.731	0.079
3	4.549	118.613	5.443
4	4.857	3.466	0.159
5	4.926	1.401	0.064
6	5.319	2031.530	92.556
7	5.367	6.365	0.292



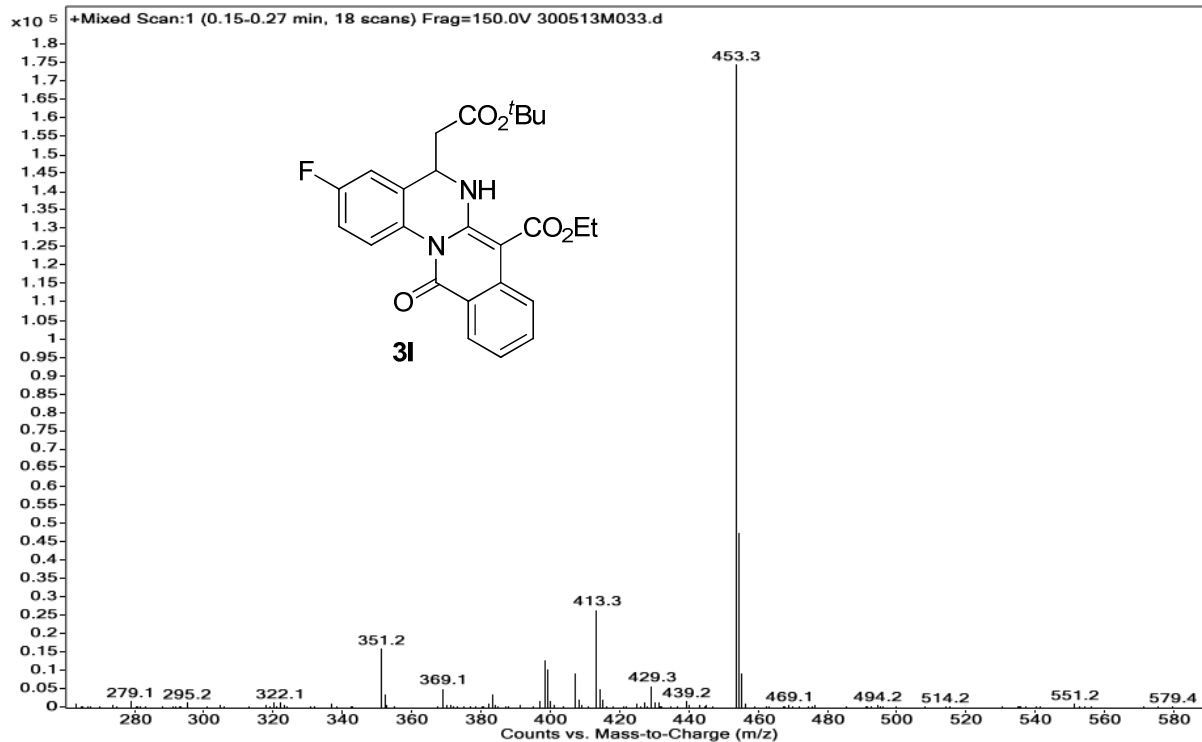
Injection Date : Tue, 16. Jul. 2013  
 Sample Name : ILS/ARJ/4/45  
 Acq Operator : RADHA  
 Acq. Method : D:\chem32\1\DATA\160713-MC 2013-07-16 18-19-54\C-18 ->  
 Analysis Method : D:\CHEM32\_002\1\METHODS\C-18 A50B50-GM.M  
 Method Info : Column : Symmetry C-18 75\*4.6mm, 3.5µm  
 Mobile phase: A) 0.1% HCOOH in Water , B) ACN (gradient )  
 T/B%:0/50,1.0/50,6/98,10/98,10.5/50,12/50  
 Flow: 1.0 ml/min, Diluent: ACN:Water(90:10)

Seq Line : 1  
 Location : Vial 11  
 Inj. No. : 1  
 Inj. Vol. : 5 µl



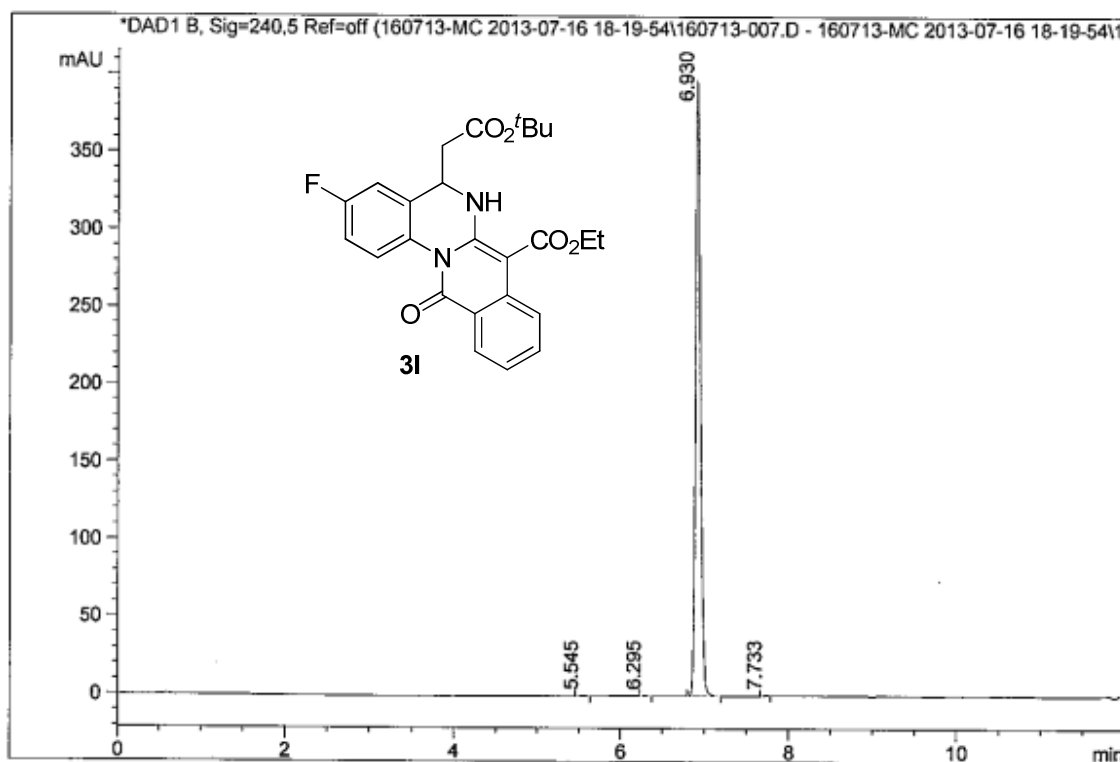
Signal 1: DAD1 C, Sig=225,5 Ref=off

Peak #	RT [min]	Area	Area %
1	0.492	11.970	0.252
2	1.614	22.243	0.467
3	1.703	5.752	0.121
4	2.383	7.253	0.152
5	3.072	6.794	0.143
6	3.460	10.572	0.222
7	3.831	12.237	0.257
8	3.984	12.611	0.265
9	4.159	1.007	0.021
10	4.271	14.241	0.299
11	4.447	11.212	0.236
12	4.718	4.969	0.104
13	5.010	4556.962	95.763
14	5.285	67.903	1.427
15	5.787	3.140	0.066
16	6.287	4.482	0.094
17	6.367	3.921	0.082
18	6.857	1.314	0.028



Injection Date : Tue, 16. Jul. 2013  
 Sample Name : ILS/ARJ/4/16  
 Acq Operator : RADHA  
 Acq. Method : D:\chem32\1\DATA\160713-MC 2013-07-16 18-19-54\C-18 ->  
 Analysis Method : D:\CHEM32\_002\1\METHODS\C-18 A50B50-GM.M  
 Method Info : Column : Symmetry C-18 75\*4.6mm,3.5µm  
 Mobile phase: A) 0.1% HCOOH in Water , B) ACN (gradient )  
 T/B%:0/50,1.0/50,6/98,10/98,10.5/50,12/50  
 Flow: 1.0 ml/min, Diluent: ACN:Water(90:10)

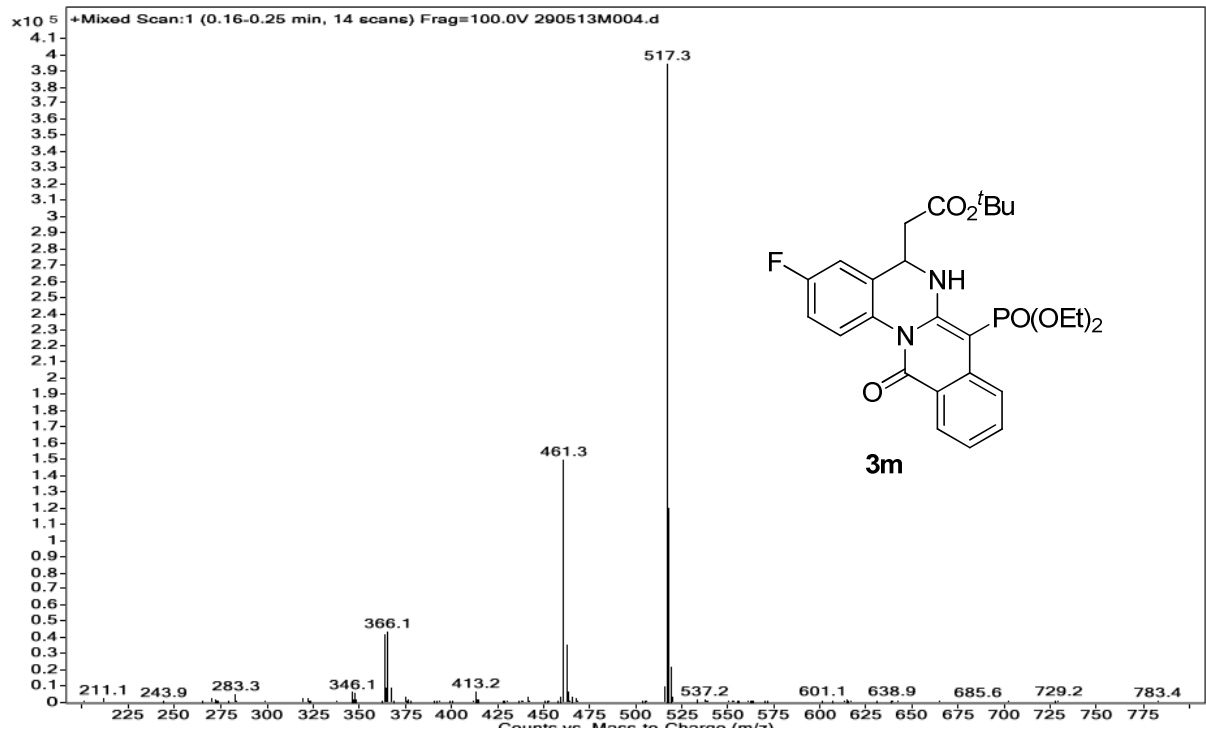
Seq Line : 5  
 Location : Vial 15  
 Inj. No. : 1  
 Inj. Vol. : 5 µl



Signal 1: DAD1 B, Sig=240,5 Ref=off

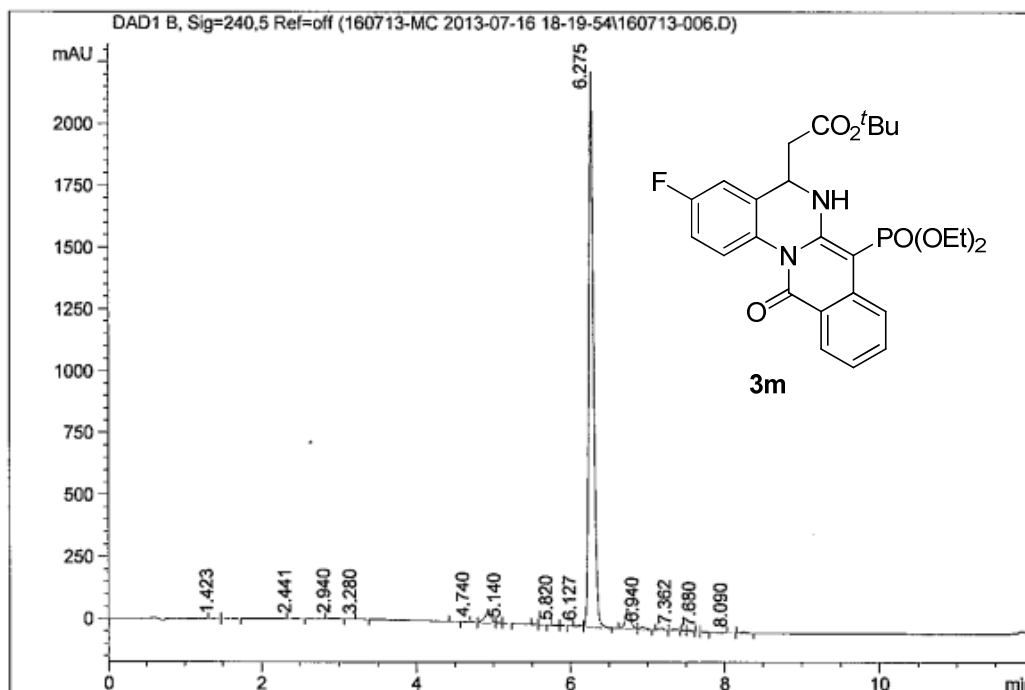
Peak #	RT [min]	Area	Area %
1	5.545	1.040	0.064
2	6.295	1.132	0.069
3	6.930	1630.914	99.770
4	7.733	1.589	0.097



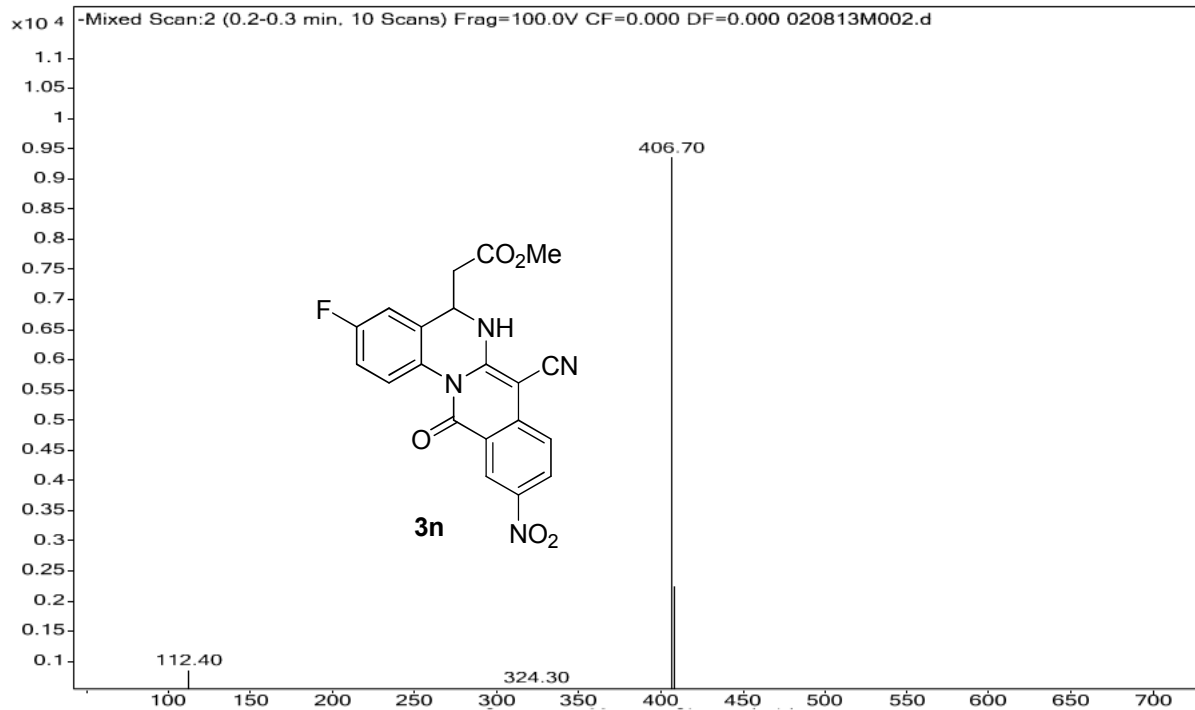


Injection Date : Tue, 16. Jul. 2013  
 Sample Name : ILS/ARJ/4/18  
 Acq Operator : RADHA  
 Acq. Method : D:\chem32\1\DATA\160713-MC 2013-07-16 18-19-54\C-18 ->  
 Analysis Method : D:\CHEM32\_002\1\METHODS\C-18 A50B50-GM.M  
 Method Info : Column : Symmetry C-18 75\*4.6mm,3.5µm  
 Mobile phase: A) 0.1% HCOOH in Water , B) ACN (gradient )  
 T/B%:0/50,1.0/50,6/98,10/98,10.5/50,12/50  
 Flow: 1.0 ml/min, Diluent: ACN:Water(90:10)

Seq Line : 4  
 Location : Vial 14  
 Inj. No. : 1  
 Inj. Vol. : 5 µl



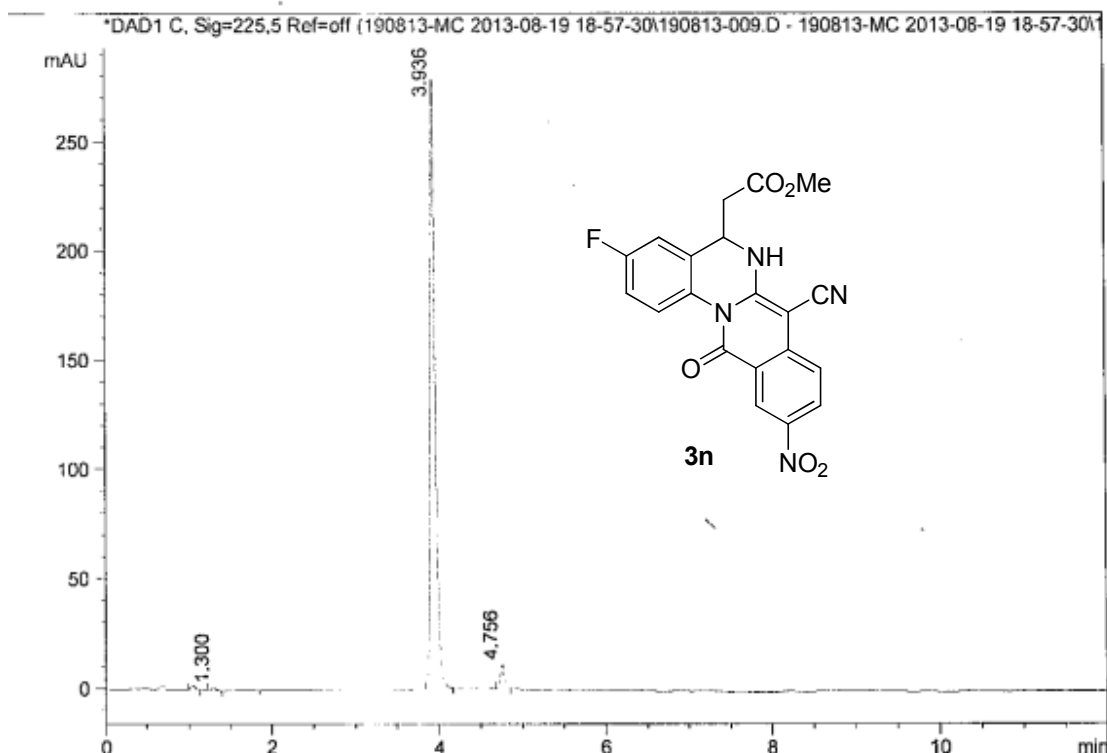
Peak #	RT [min]	Area	Area %
13	5.820	6.354	0.060
14	5.887	4.516	0.043
15	6.127	23.385	0.222
16	6.275	9607.283	91.362
17	6.743	380.643	3.620
18	6.940	43.738	0.416
19	7.175	31.651	0.301
20	7.362	19.652	0.187
21	7.507	6.521	0.062
22	7.547	13.996	0.133
23	7.680	4.052	0.039
24	7.720	10.894	0.104
25	8.090	3.441	0.033
26	8.260	18.284	0.174



```

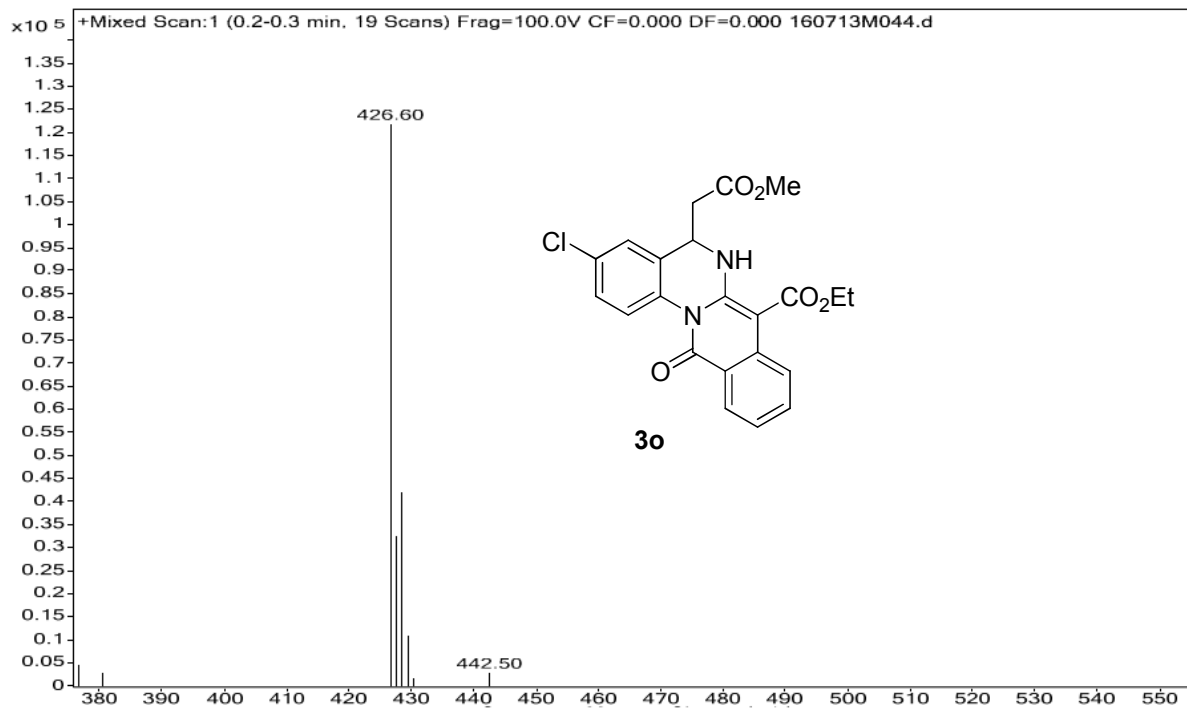
-----
Injection Date : Mon, 19. Aug. 2013          Seq Line   :           9
Sample Name    : ILS-ARJ-4-73                Location    :       Vial 17
Acq Operator   : RADHA                       Inj. No.   :           1
Acq. Method   : D:\chem32\1\DATA\190813-MC 2013-08-19 18-57-30\C-18 ->
Analysis Method : D:\CHEM32_002\1\METHODS\C-18 A50B50-GM.M
Method Info    : Column : Symmetry C-18 75*4.6mm,3.5µm
                  Mobile phase: A) 0.1% HCOOH in Water , B) ACN
                  T/B%:0/50,1/50,4/98,10/98,10.5/50,12/50
                  Flow: 1.0 ml/min, Diluent: ACN:Water(90:10)

```



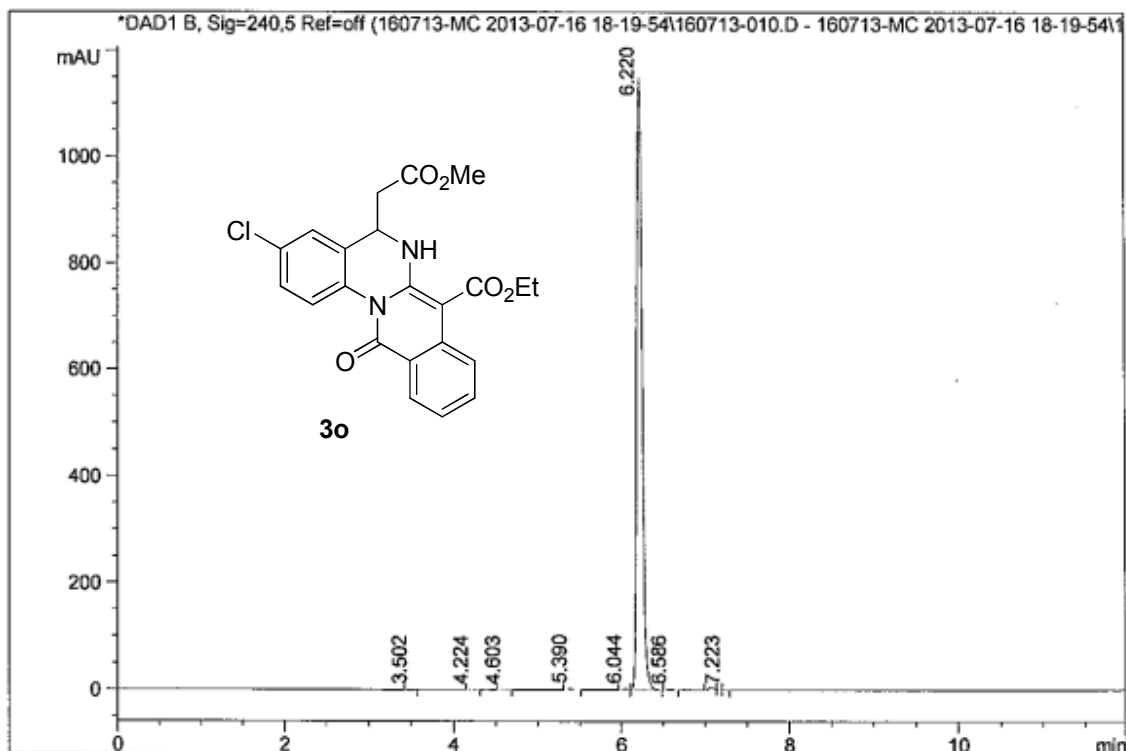
Signal 1: DAD1 C, Sig=225,5 Ref=off

Peak #	RT [min]	Area	Area %
1	1.051	5.667	0.477
2	1.300	3.038	0.256
3	3.936	1138.593	95.852
4	4.756	40.568	3.415



Injection Date : Tue, 16. Jul. 2013  
 Sample Name : ILS/ARJ/4/37  
 Acq Operator : RADHA  
 Acq. Method : D:\chem32\1\DATA\160713-MC 2013-07-16 18-19-54\C-18 ->  
 Analysis Method : D:\CHEM32\_002\1\METHODS\C-18 A50B50-GM.M  
 Method Info : Column : Symmetry C-18 75\*4.6mm,3.5µm  
 Mobile phase: A) 0.1% HCOOH in Water , B) ACN (gradient )  
 T/B%:0/50,1.0/50,6/98,10/98,10.5/50,12/50  
 Flow: 1.0 ml/min, Diluent: ACN:Water(90:10)

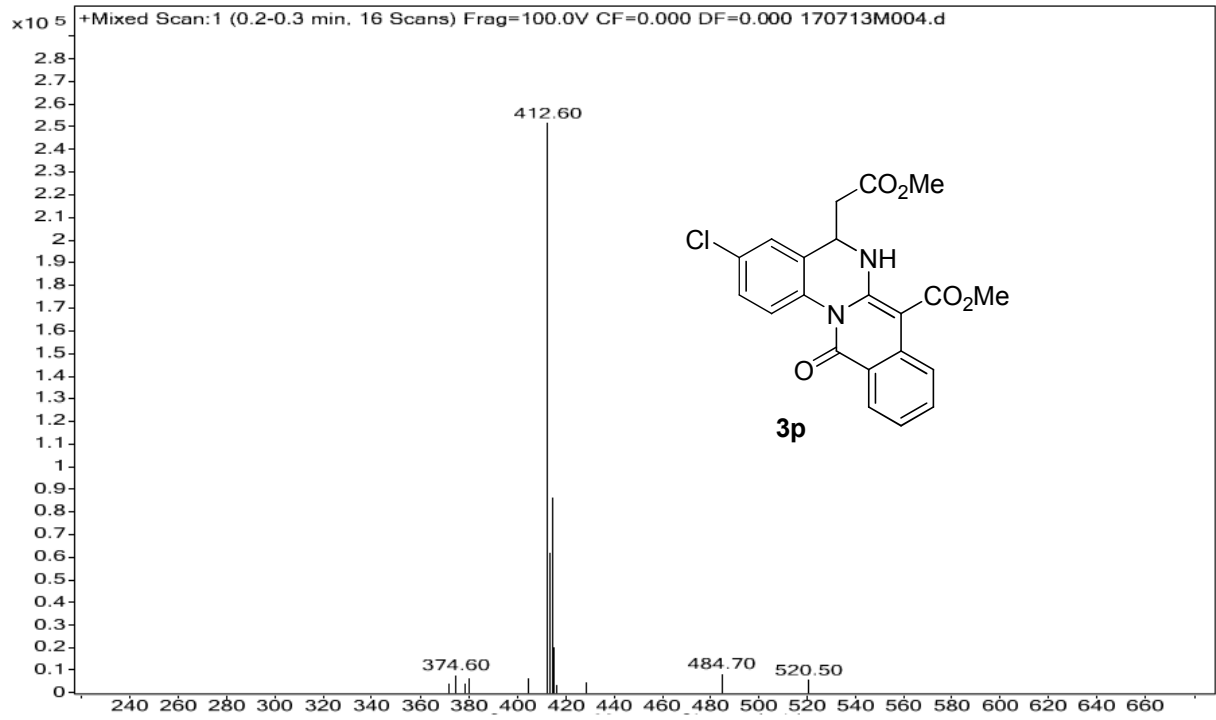
Seq Line : 0  
 Location : Vial 18  
 Inj. No. : 1  
 Inj. Vol. : 5 µl



Signal 1: DAD1 B, Sig=240,5 Ref=off

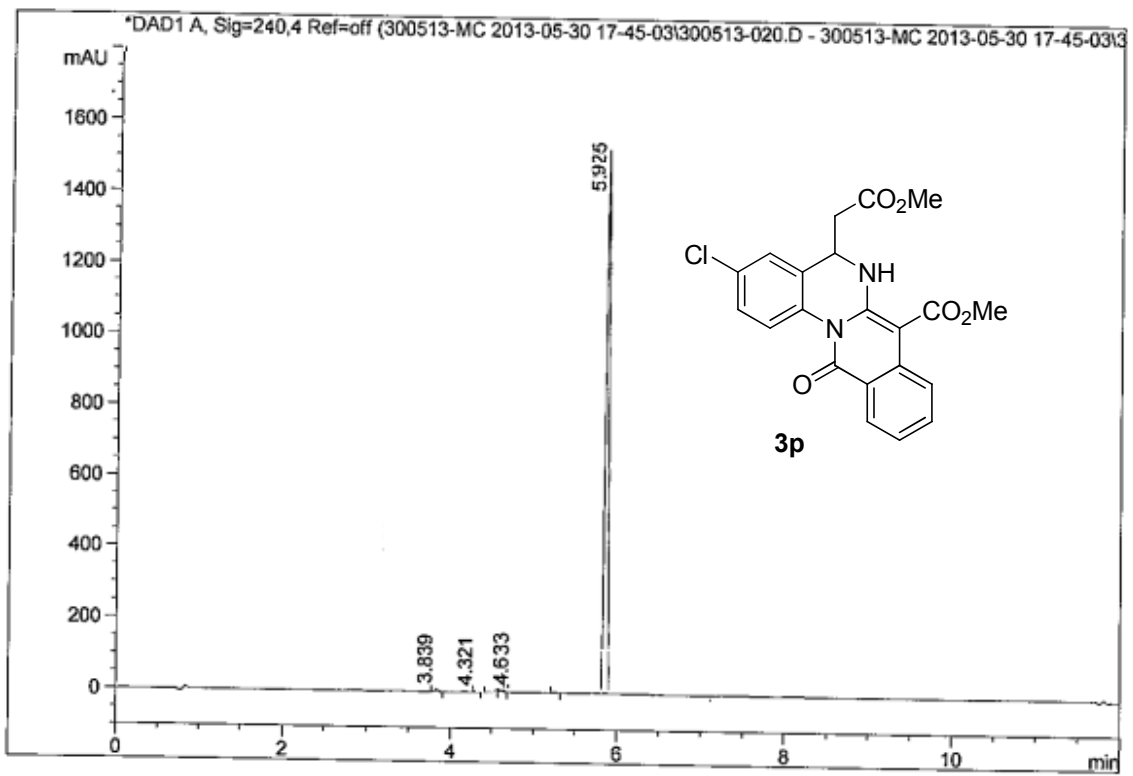
Peak #	RT [min]	Area	Area %
1	3.502	1.078	0.021
2	4.224	2.591	0.051
3	4.603	1.383	0.027
4	5.390	12.563	0.247
5	6.044	7.763	0.153
6	6.220	5029.748	98.871
7	6.586	2.149	0.042
8	7.077	24.232	0.476
9	7.143	3.231	0.064
10	7.223	2.444	0.048

RP



Injection Date : Thu, 30. May. 2013  
 Sample Name : ILS-ARJ-4-6  
 Acq Operator : RADHA  
 Acq. Method : D:\chem32\1\DATA\300513-MC 2013-05-30 17-45-03\C-18 ->  
 Analysis Method : D:\CHEM32\_002\1\METHODS\C-18 A80B20GM.M  
 Method Info : Column:Symmetry C-18 75\*4.6mm,3.5µ  
 Mobile phase: A) 0.1% HCOOH in Water , B) ACN (gradient  
 T/B%:0/50,0.5/50,6/98,10/98,10.5/50,12/50  
 Flow: 1.0 ml/min, Diluent: ACN:Water(90:10)

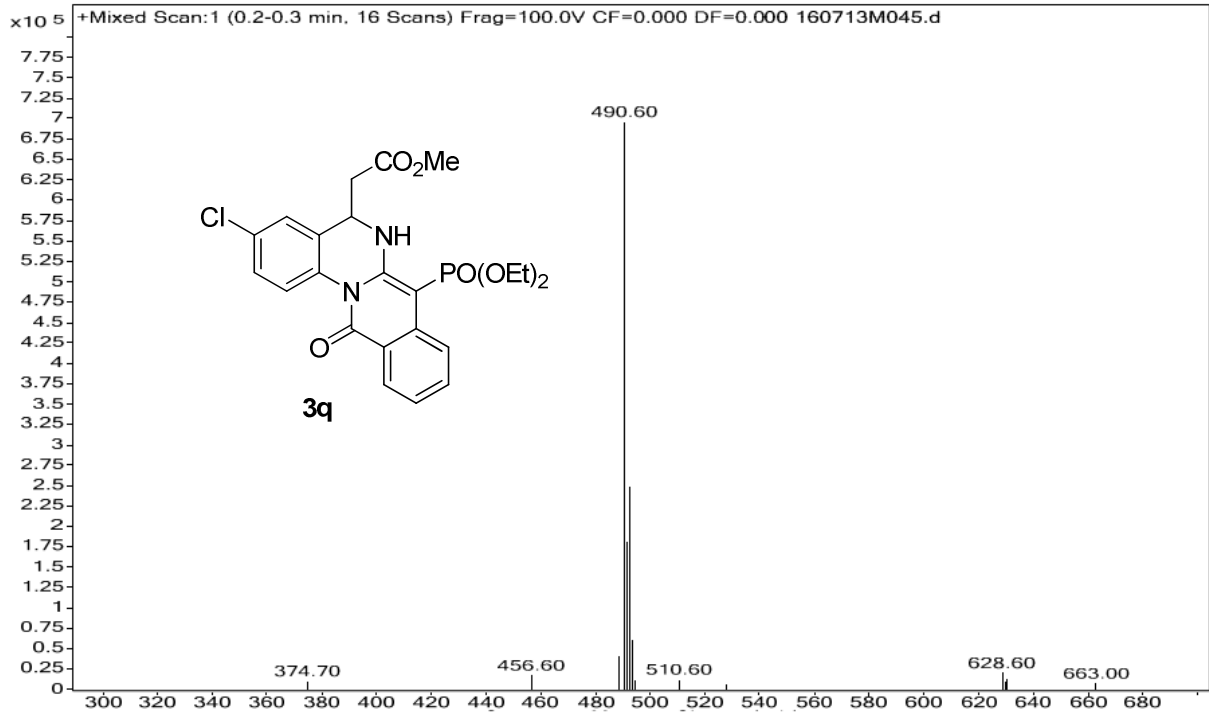
Seq Line : .6  
 Location : Vial 51  
 Inj. No. : 1  
 Inj. Vol. : 5 µl



Signal 1: DAD1 A, Sig=240,4 Ref=off

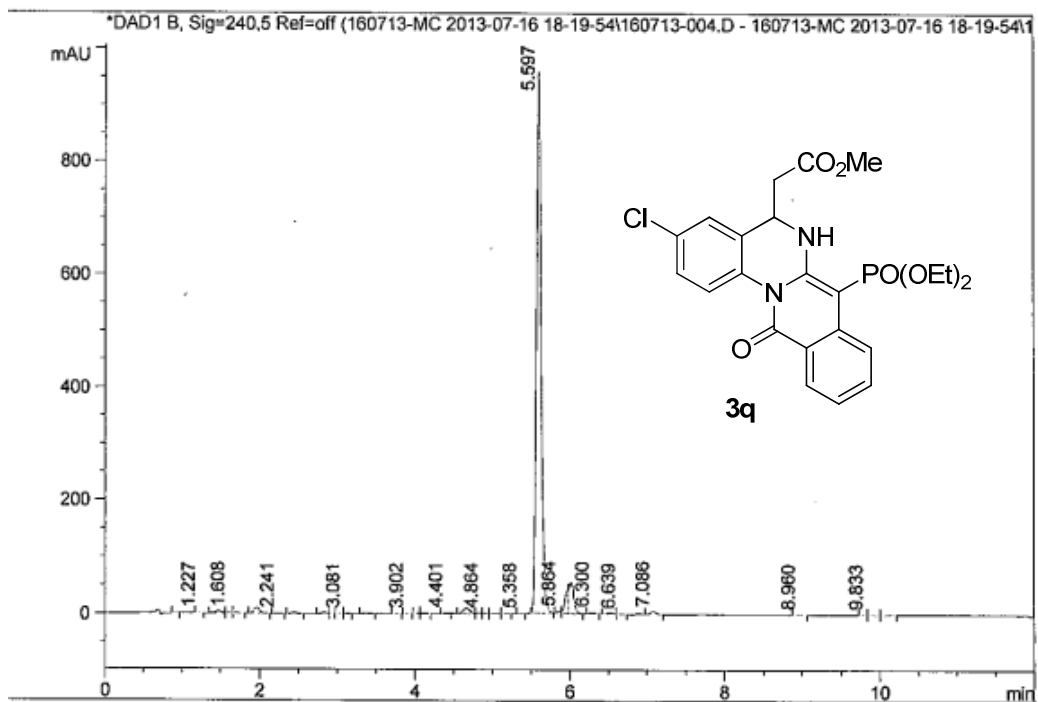
Peak #	RT [min]	Area	Area %
1	3.839	118.568	2.143
2	4.321	5.921	1.309
3	4.444	8.855	0.164
4	4.633	11.573	0.214
5	5.925	5366.832	95.870



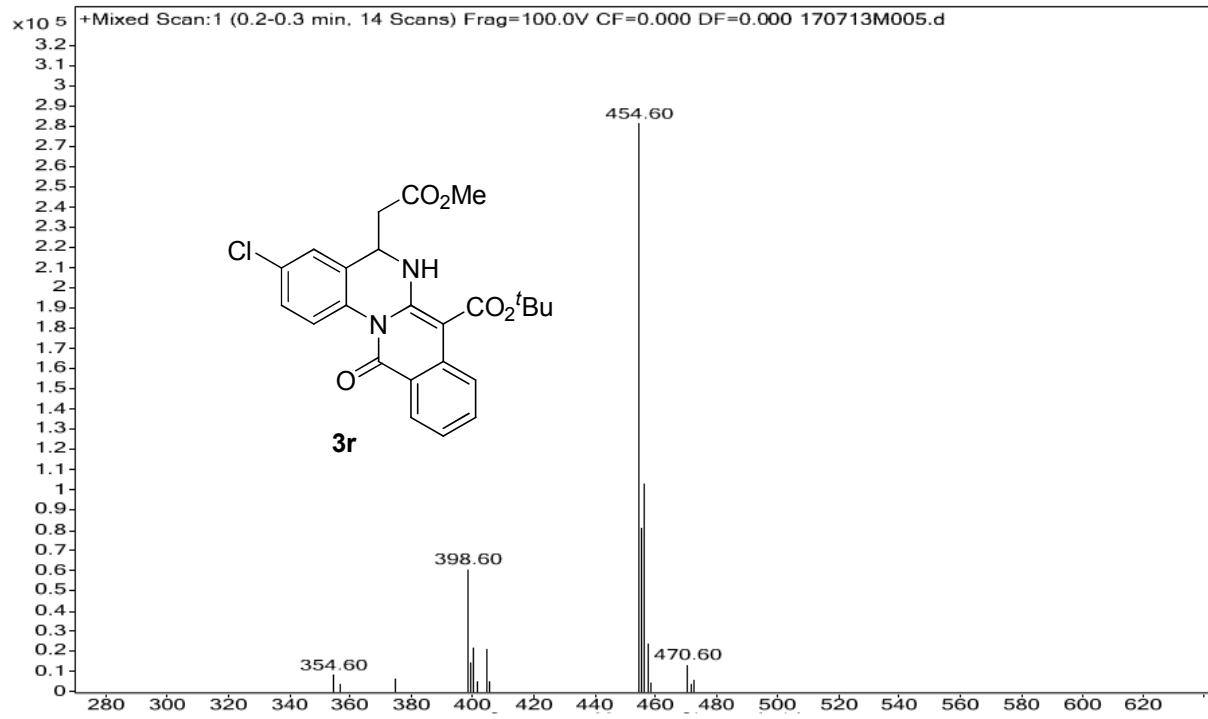


Injection Date : Tue, 16. Jul. 2013  
 Sample Name : ILS/ARJ/4/39  
 Acq Operator : RADHA  
 Acq. Method : D:\chem32\1\DATA\160713-MC 2013-07-16 18-19-54\C-18 ->  
 Analysis Method : D:\CHEM32\_002\1\METHODS\C-18 A50B50-GM.M  
 Method Info : Column : Symmetry C-18 75\*4.6mm,3.5µm  
 Mobile phase: A) 0.1% HCOOH in Water , B) ACN (gradient )  
 T/B%:0/50,1.0/50,6/98,10/98,10.5/50,12/50  
 Flow: 1.0 ml/min, Diluent: ACN:Water(90:10)

Seq Line : 2  
 Location : Vial 12  
 Inj. No. : 1  
 Inj. Vol. : 5 µl

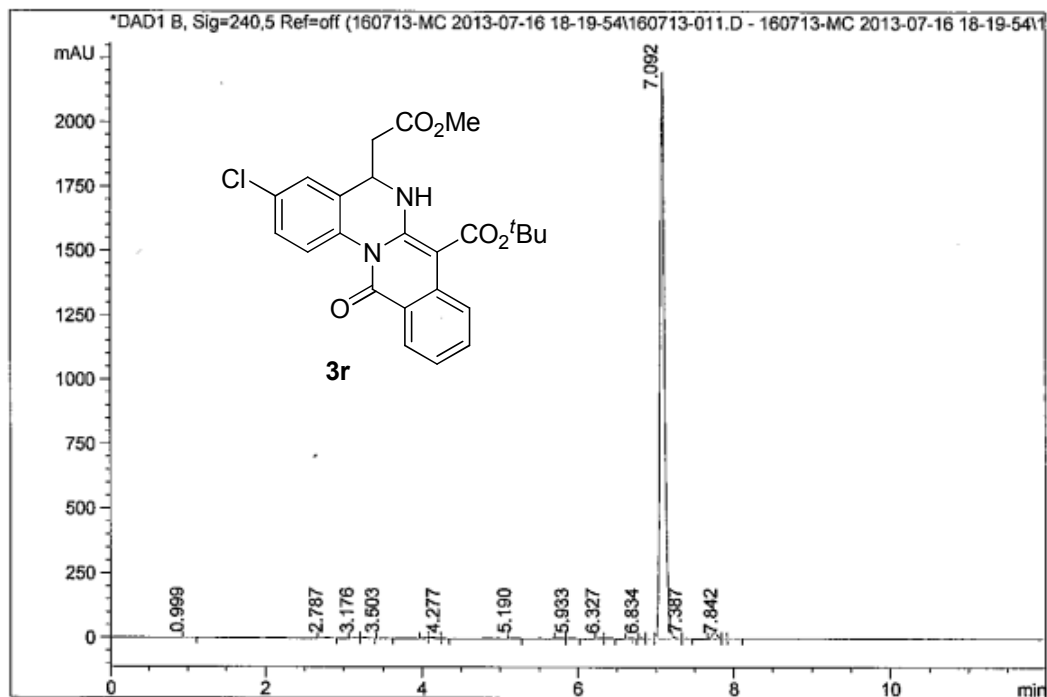


Signal	1: DAD1 B, Sig=240,5 Ref=off	Peak #	RT [min]	Area	Area %
13		13	3.377	8.237	0.174
14		14	3.779	2.156	0.045
15		15	3.902	1.258	0.027
16		16	4.036	2.088	0.044
17		17	4.120	4.401	0.093
18		18	4.401	4.400	0.093
19		19	4.665	55.220	1.163
20		20	4.827	5.441	0.115
21		21	4.864	2.085	0.044
22		22	5.063	3.631	0.077
23		23	5.172	3.070	0.065
24		24	5.358	1.189	0.025
25		25	5.597	4117.947	89.951
26		26	5.864	8.727	0.184
27		27	5.980	130.788	2.755



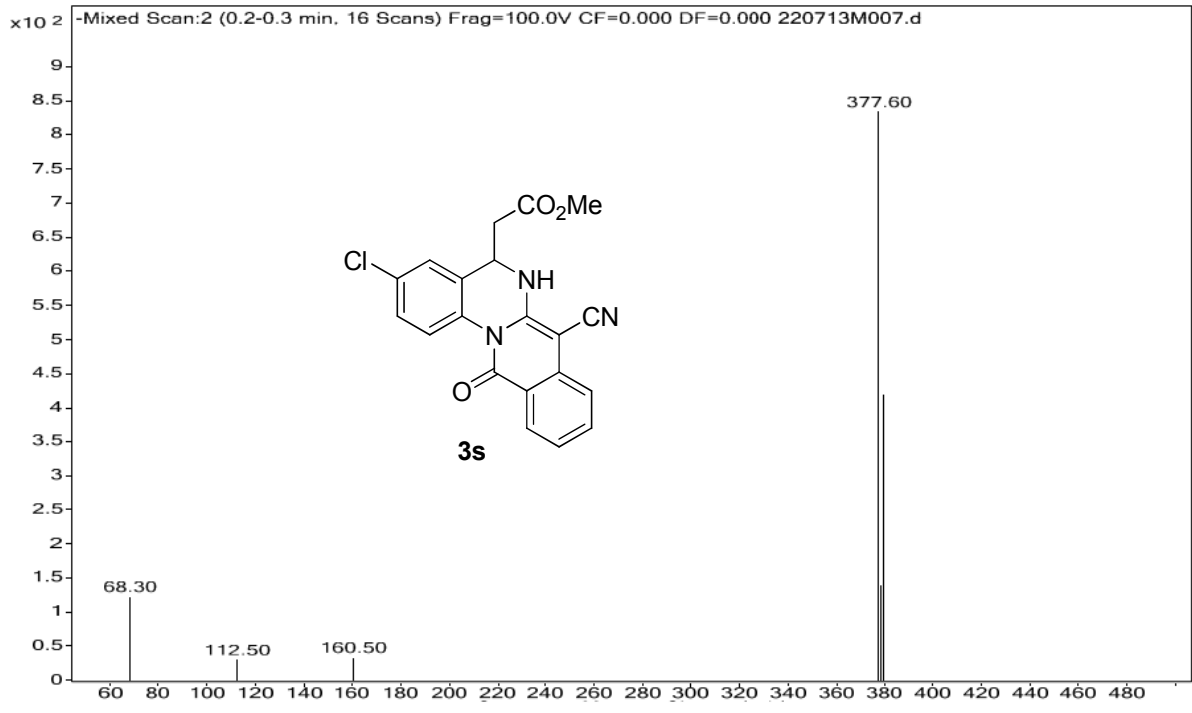
```

Injection Date : Tue, 16. Jul. 2013
Sample Name    : ILS/ARJ/4/40
Acq Operator   : RADHA
Acq. Method    : D:\chem32\1\DATA\160713-MC 2013-07-16 18-19-54\C-18 ->
Analysis Method : D:\CHEM32_002\1\METHODS\C-18 A50B50-GM.M
Method Info    : Column : Symmetry C-18 75*4.6mm,3.5µm
                  Mobile phase: A) 0.1% HCOOH in Water , B) ACN (gradient )
                  T/B%:0/50,1.0/50,6/98,10/98,10.5/50,12/50
                  Flow: 1.0 ml/min, Diluent: ACN:Water(90:10)
  
```



Signal 1: DAD1 B, Sig=240,5 Ref=off

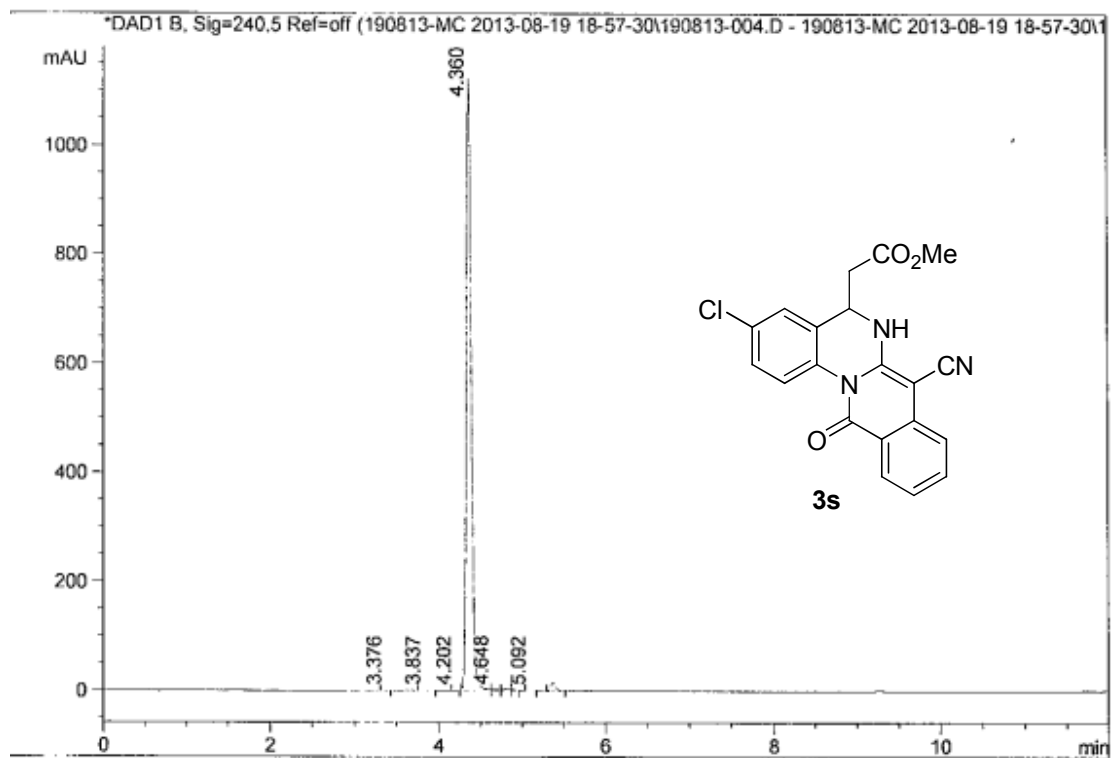
Peak #	RT [min]	Area	Area %	Peak #	RT [min]	Area	Area %
1	0.999	4.217	0.045	13	6.379	7.588	0.081
2	2.787	2.577	0.027	14	6.675	4.540	0.048
3	3.176	8.288	0.088	15	6.834	2.324	0.025
4	3.263	15.795	0.169	16	6.917	3.071	0.033
5	3.503	4.801	0.051	17	7.092	9124.833	97.344
6	4.057	11.572	0.123	18	7.387	6.836	0.073
7	4.144	25.044	0.267	19	7.757	121.065	1.292
8	4.277	2.063	0.022	20	7.842	2.080	0.022
9	5.190	9.251	0.099	21	7.980	6.619	0.071
10	5.770	4.113	0.044				
11	5.933	4.753	0.051				
12	6.327	2.384	0.025				



```

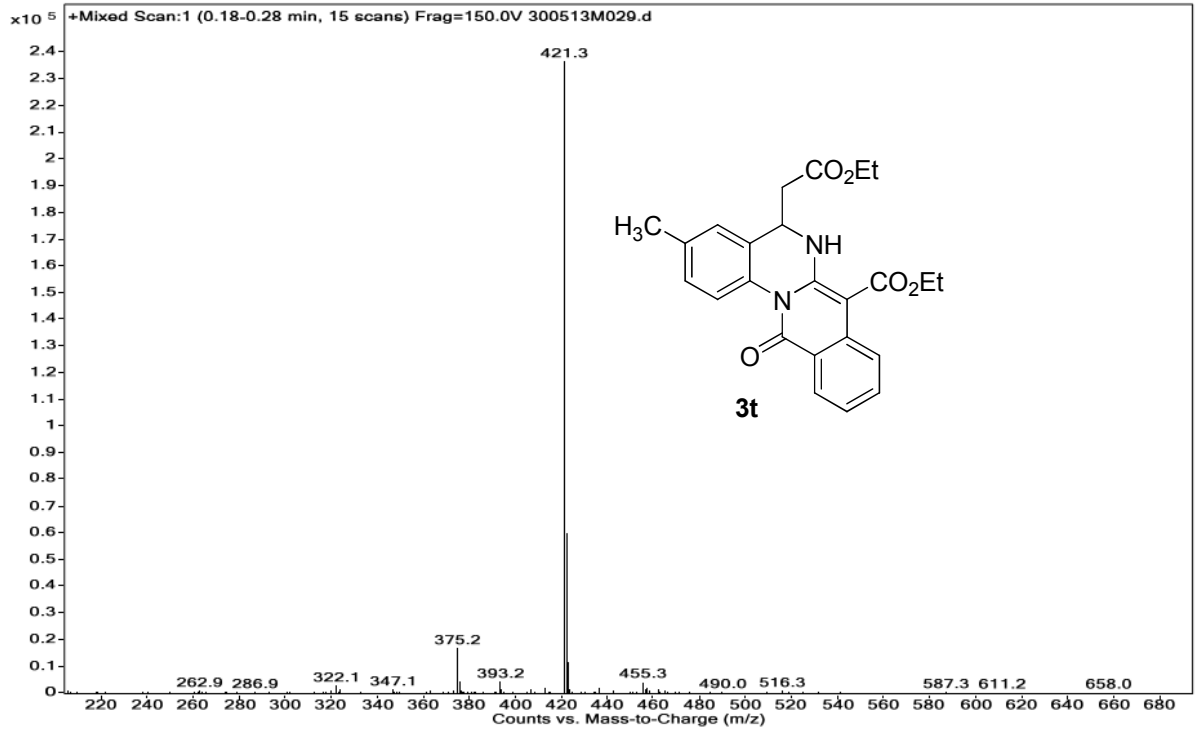
Injection Date : Mon, 19. Aug. 2013
Sample Name    : ILS-ARJ-4-60
Acq Operator   : RADHA
Acq. Method    : D:\chem32\1\DATA\190813-MC 2013-08-19 18-57-30\C-18 ->
Analysis Method : D:\CHEM32_002\1\METHODS\C-18 A50B50-GM.M
Method Info    : Column: X TERRA C18 250*4.6mm,5µm
                  Mobile phase: A) 0.1%TFA in water,B) ACN T/B%:0/20,3/20,15/
                  Flow:1.0 ml/min Diluent: ACN:Water(80:20)
Seq Line      : 4
Location      : Vial 12
Inj. No.     : 1
Inj. Vol.    : 5 µl

```

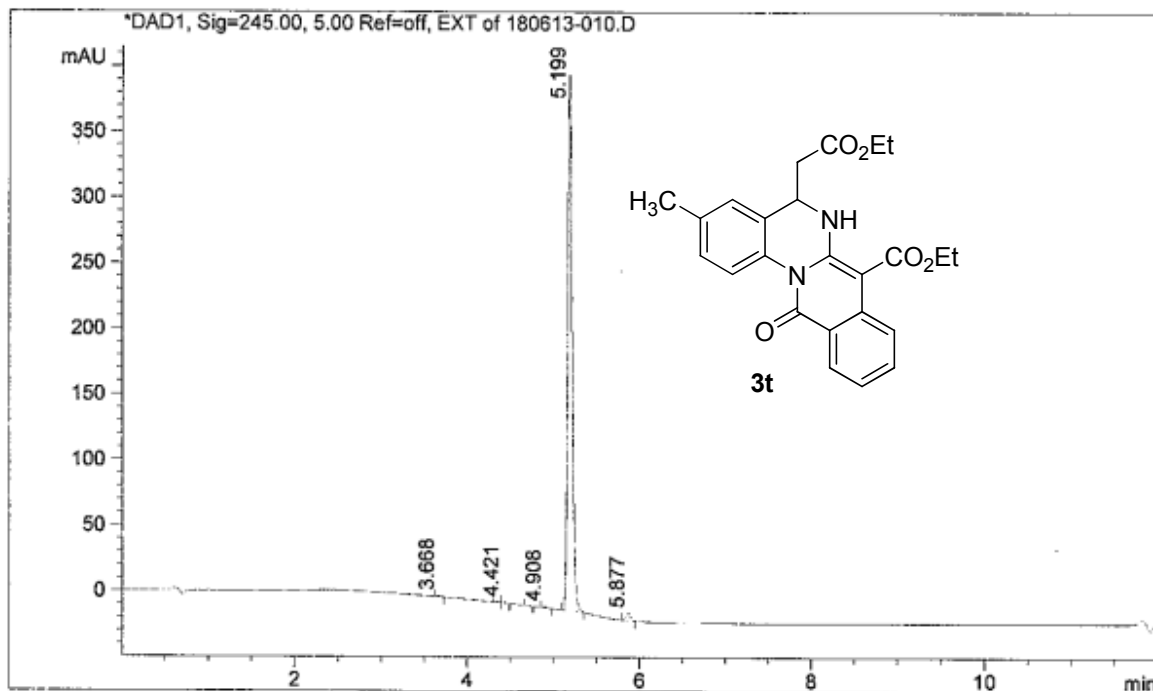


Signal 1: DAD1 B, Sig=240,5 Ref=off

Peak #	RT [min]	Area	Area %
1	3.376	1.183	0.026
2	3.837	2.615	0.057
3	4.202	1.032	0.022
4	4.360	4526.196	98.298
5	4.648	4.946	0.107
6	4.807	10.607	0.230
7	4.870	2.008	0.044
8	5.092	2.860	0.062
9	5.370	53.141	1.154



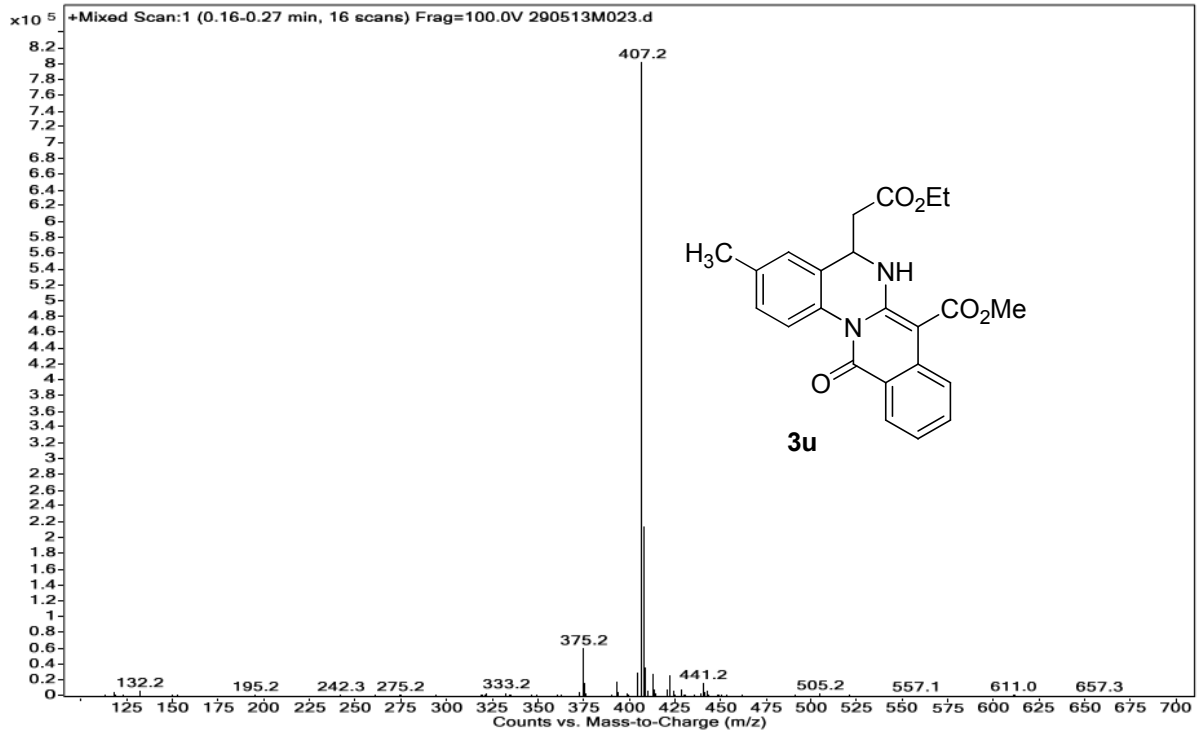
Injection Date	: Tue, 18. Jun. 2013	Seq Line	: 10
Sample Name	: ILS-ARJ-4-1	Location	: Vial 16
Acq Operator	: RADHA	Inj. No.	: 1
Acq. Method	: D:\chem32\1\DATA\180613-MC 2013-06-18 18-44-29\C-18 ->	Inj. Vol.	: 5 µl
Analysis Method	: D:\CHEM32_002\1\METHODS\C-18 A80B20GM.M		
Method Info	: Column:Symmetry C-18 75*4.6mm,3.5µ		
	: Mobile phase: A) 0.1% HCOOH in water,B) ACN T%B:0/20,0.5/20,4/98,10/98,10.5/20,12/20		
	: Flow:1.0 ml/min Diluent: ACN:Water(80:20)		



Signal 1: DAD1, Sig=245.00, 5.00 Ref=off, EXT

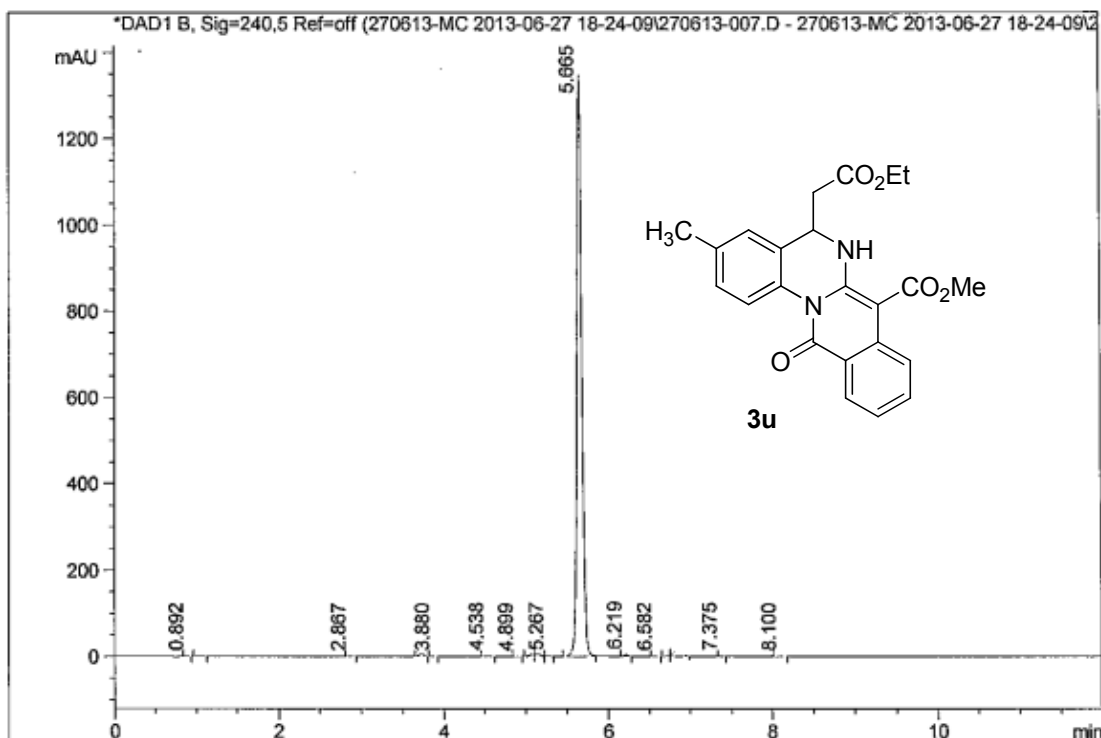
Peak #	RT [min]	Area	Area %
1	3.668	1.676	0.112
2	4.361	2.207	0.148
3	4.421	1.648	0.110
4	4.721	1.388	0.093
5	4.908	2.510	0.168
6	5.199	1464.308	97.996
7	5.877	20.523	1.373





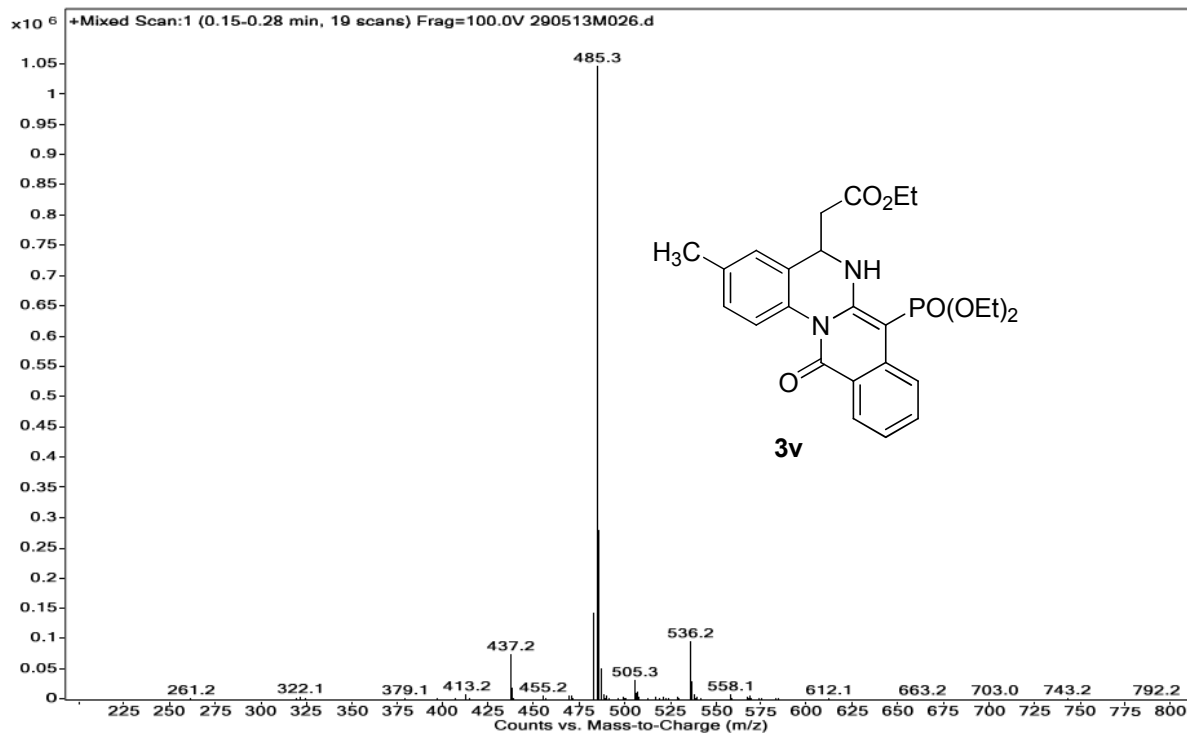
Injection Date : Thu, 27. Jun. 2013  
 Sample Name : ILS/ARJ/4/2  
 Acq Operator : RADHA  
 Acq. Method : D:\chem32\1\DATA\270613-MC 2013-06-27 18-24-09\C-18 ->  
 Analysis Method : D:\CHEM32\_002\1\METHODS\C-18 A50B50-GM.M  
 Method Info : Column : Symmetry C-18 75\*4.6mm,3.5µm  
 Mobile phase: A) 0.1% HCOOH in Water , B) ACN (gradient )  
 T/B%:0/50,0.5/50,6/98,10/98,10.5/50,12/50  
 Flow: 1.0 ml/min, Diluent: ACN:Water(90:10)

Seq Line : 11  
 Location : Vial 80  
 Inj. No. : 1  
 Inj. Vol. : 5 µl

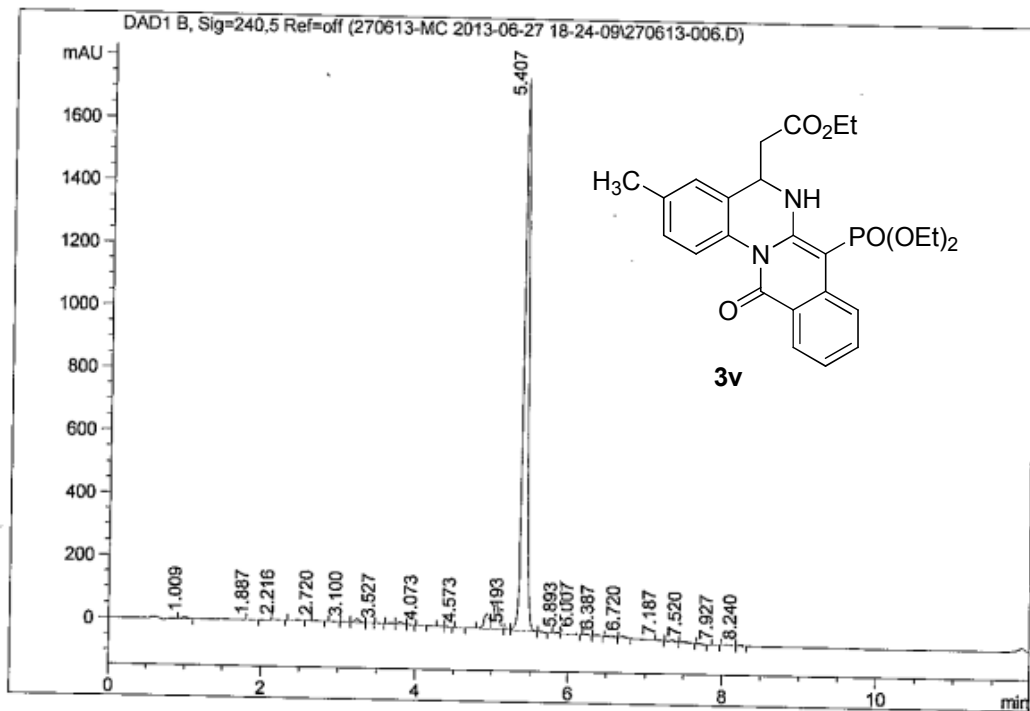


Signal 1: DAD1 B, Sig=240,5 Ref=off

Peak #	RT [min]	Area	Area %	Peak #	RT [min]	Area	Area %
1	0.892	1.028	0.017	10	5.267	1.883	0.030
2	1.019	2.796	0.045	11	5.665	5631.288	97.936
3	2.867	1.927	0.031	12	6.219	12.389	0.200
4	3.729	22.696	0.366	13	6.582	2.462	0.040
5	3.880	1.755	0.028	14	6.753	6.162	0.100
6	4.538	8.155	0.132	15	6.861	5.158	0.350
7	4.899	1.852	0.030	16	7.375	1.648	0.027
8	5.065	20.447	0.330	17	8.100	2.875	0.046
9	5.151	18.080	0.292				

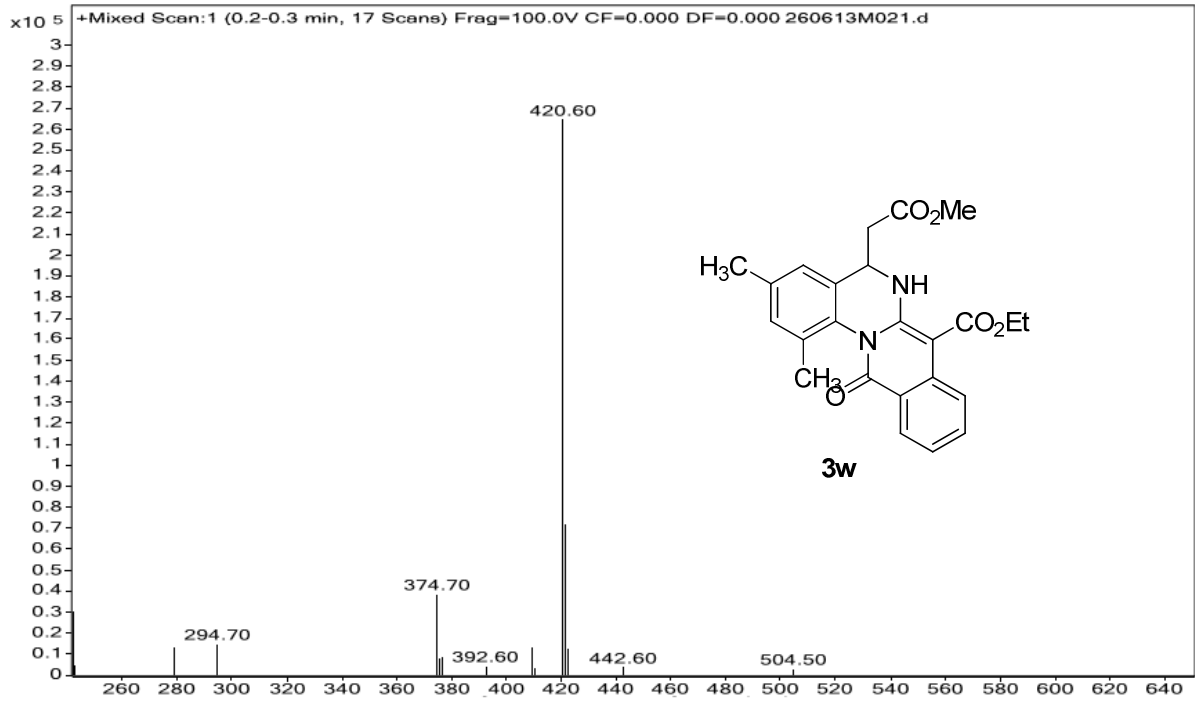


Injection Date : Thu, 27. Jun. 2013                      Seq Line :            10  
 Sample Name    : ILS/ARJ/4/5                                Location    :        Vial 79  
 Acq Operator   : RADHA                                        Inj. No.    :            1  
 Acq. Method    : D:\chem32\1\DATA\270613-MC 2013-06-27 18-24-09\C-18 -> Inj. Vol.    :            5 µl  
 Analysis Method : D:\CHEM32\_002\1\METHODS\C-18 A50B50-GM.M  
 Method Info    : Column : Symmetry C-18 75\*4.6mm, 3.5µm  
                   Mobile phase: A) 0.1% HCOOH in Water , B) ACN (gradient )  
                   T/B%:0/50,0.5/50,6/98,10/98,10.5/50,12/50  
                   Flow: 1.0 ml/min, Diluent: ACN:Water(90:10)

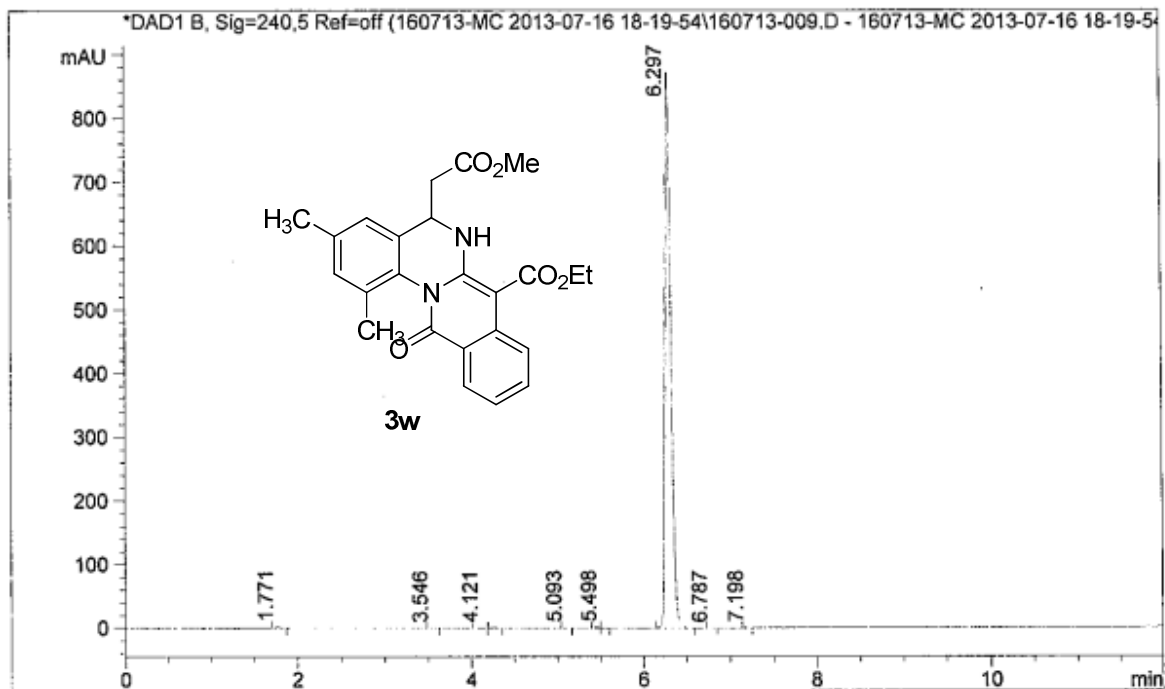


Signal 1: DAD1 B, Sig=240,5 Ref=off

Peak #	RT [min]	Area	Area %	Peak #	RT [min]	Area	Area %
1	1.009	16.882	0.175	13	3.913	4.755	0.049
2	1.887	1.535	0.016	14	4.073	3.448	0.036
3	2.216	6.659	0.069	15	4.347	7.240	0.075
4	2.473	9.882	0.103	16	4.400	6.571	0.068
5	2.720	3.246	0.034	17	4.573	1.453	0.015
6	2.940	2.594	0.027	18	4.927	214.291	2.225
7	3.100	3.878	0.040	19	5.052	404.548	4.200
8	3.246	51.016	0.530	20	5.193	7.334	0.076
9	3.400	1.097	0.011	21	5.407	8528.083	89.952
10	3.527	2.756	0.029	22	5.653	4.753	0.049
11	3.693	15.851	0.165	23	5.893	14.094	0.146
12	3.807	38.811	0.403				

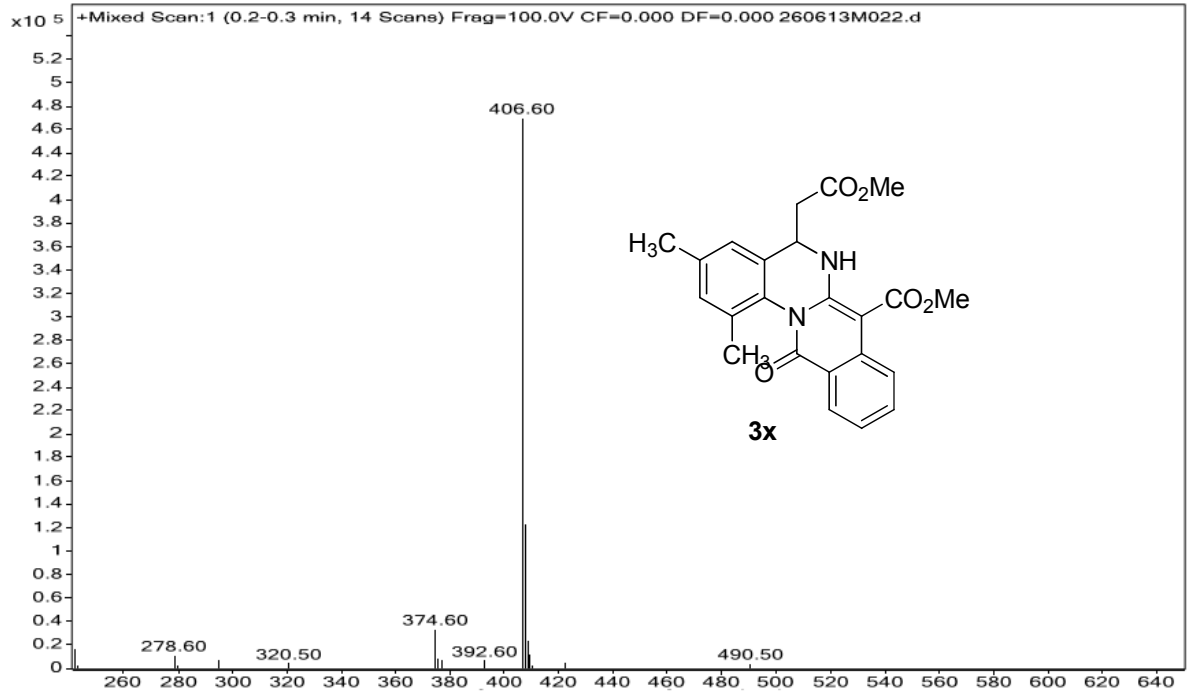


Injection Date : Tue, 16. Jul. 2013  
 Sample Name : ILS/ARJ/4/28  
 Acq Operator : RADHA  
 Acq. Method : D:\chem32\1\DATA\160713-MC 2013-07-16 18-19-54\C-18 ->  
 Analysis Method : D:\CHEM32\_002\1\METHODS\C-18 A50B50-GM.M  
 Method Info : Column : Symmetry C-18 75\*4.6mm,3.5µm  
 Mobile phase: A) 0.1% HCOOH in Water , B) ACN (gradient )  
 T/B%:0/50,1.0/50,6/98,10/98,10.5/50,12/50  
 Flow: 1.0 ml/min, Diluent: ACN:Water(90:10)



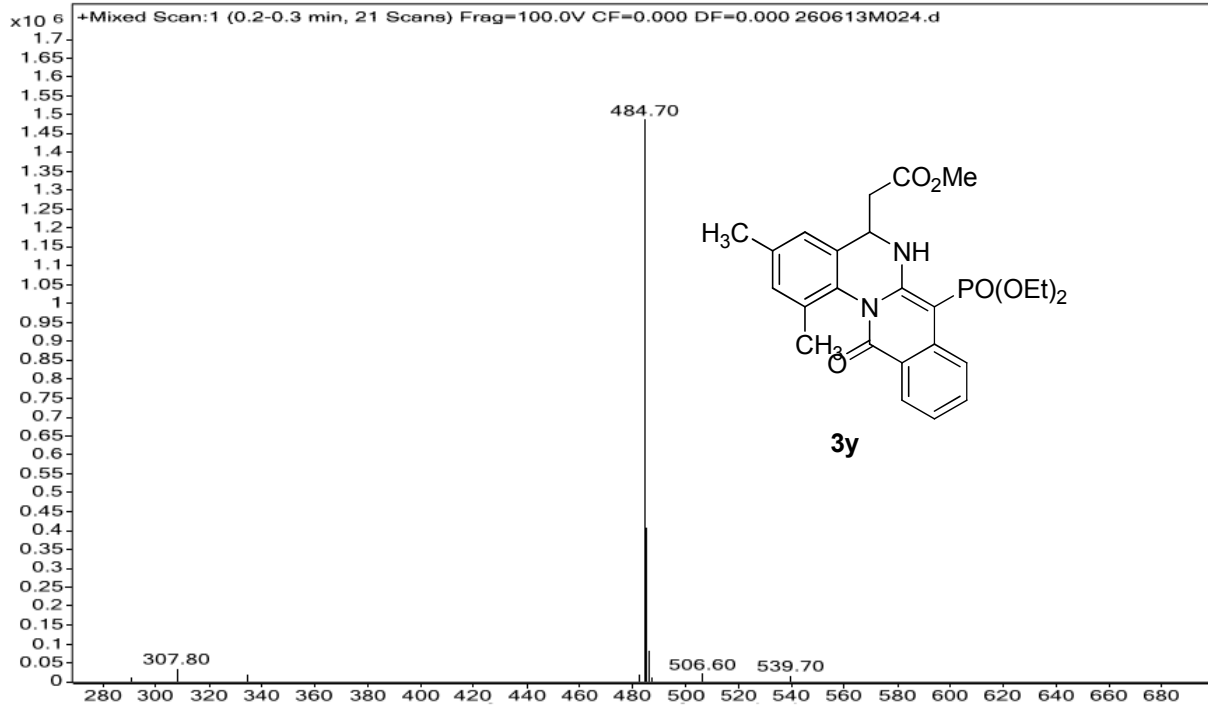
Signal 1: DAD1 B, Sig=240,5 Ref=off

Peak #	RT [min]	Area	Area %
1	1.771	8.086	0.195
2	3.546	1.384	0.033
3	4.121	2.094	0.051
4	4.254	6.138	0.148
5	5.093	1.313	0.032
6	5.463	4.545	0.110
7	5.498	2.100	0.051
8	6.297	4113.708	99.331
9	6.787	1.054	0.025
10	7.198	1.002	0.024

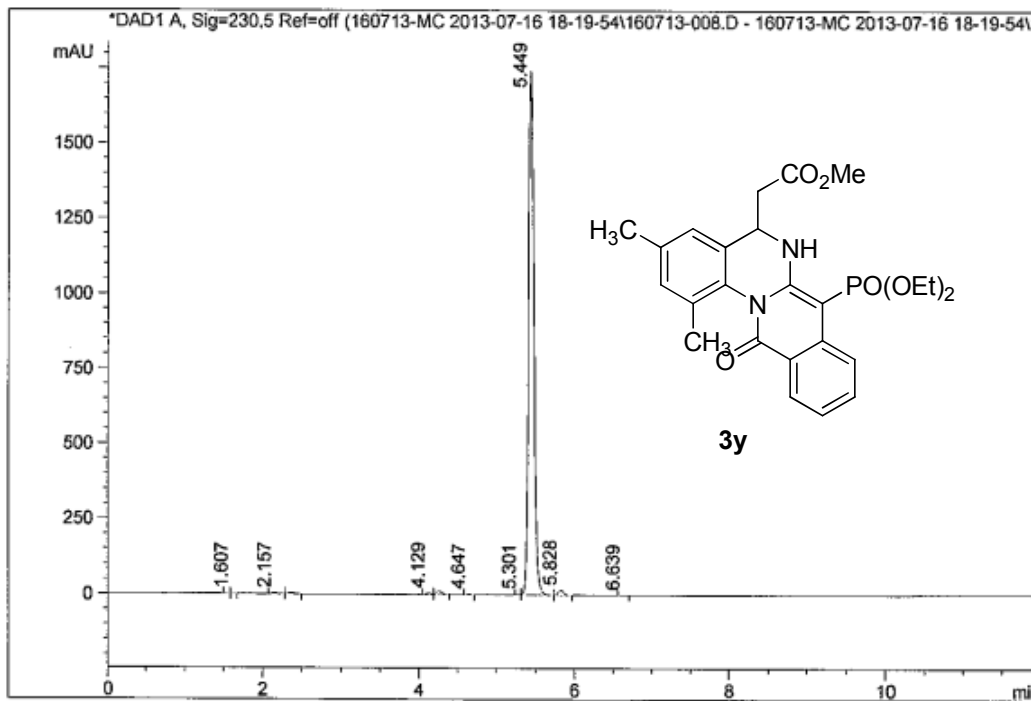






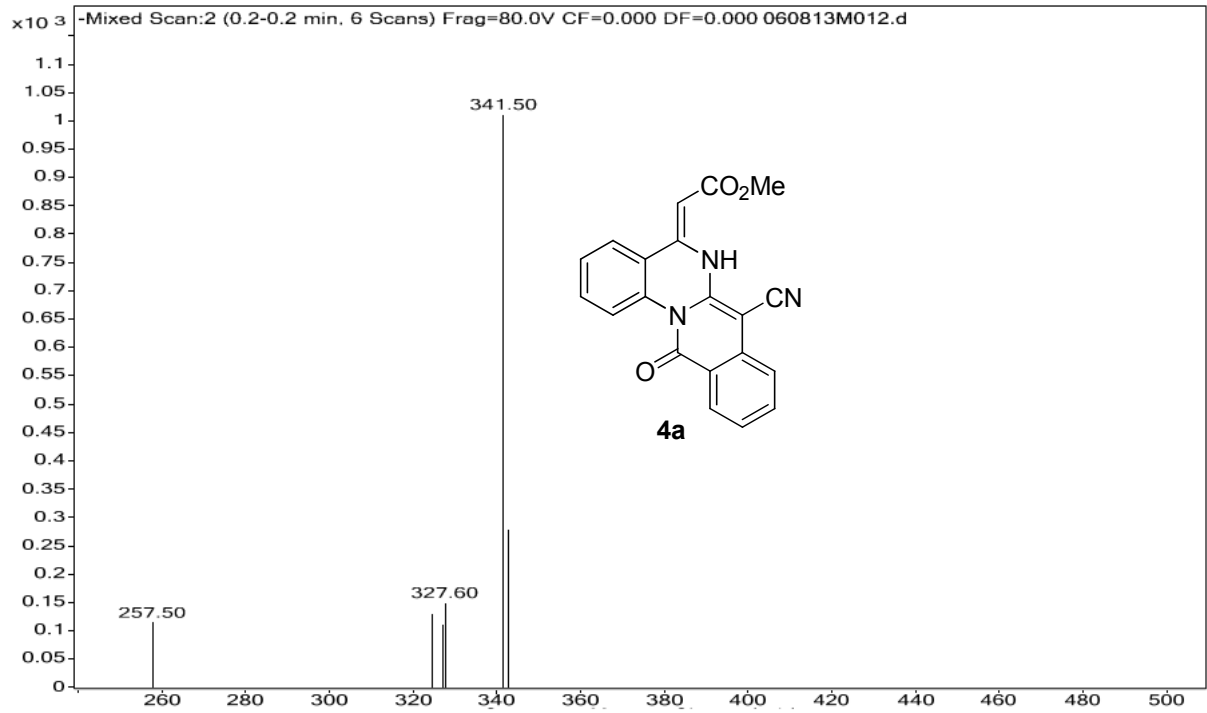


Injection Date : Tue, 16. Jul. 2013      Seq Line : 6  
 Sample Name : ILS/ARJ/4/33      Location : Vial 16  
 Acq Operator : RADHA      Inj. No. : 1  
 Acq. Method : D:\chem32\1\DATA\160713-MC 2013-07-16 18-19-54\C-18 ->      Inj. Vol. : 5 µl  
 Analysis Method : D:\CHEM32\_002\1\METHODS\C-18 A50B50-GM.M  
 Method Info : Column : Symmetry C-18 75\*4.6mm,3.5µm  
               Mobile phase: A) 0.1% HCOOH in Water , B) ACN (gradient )  
               T/B%:0/50,1.0/50,6/98,10/98,10.5/50,12/50  
               Flow: 1.0 ml/min, Diluent: ACN:Water(90:10)

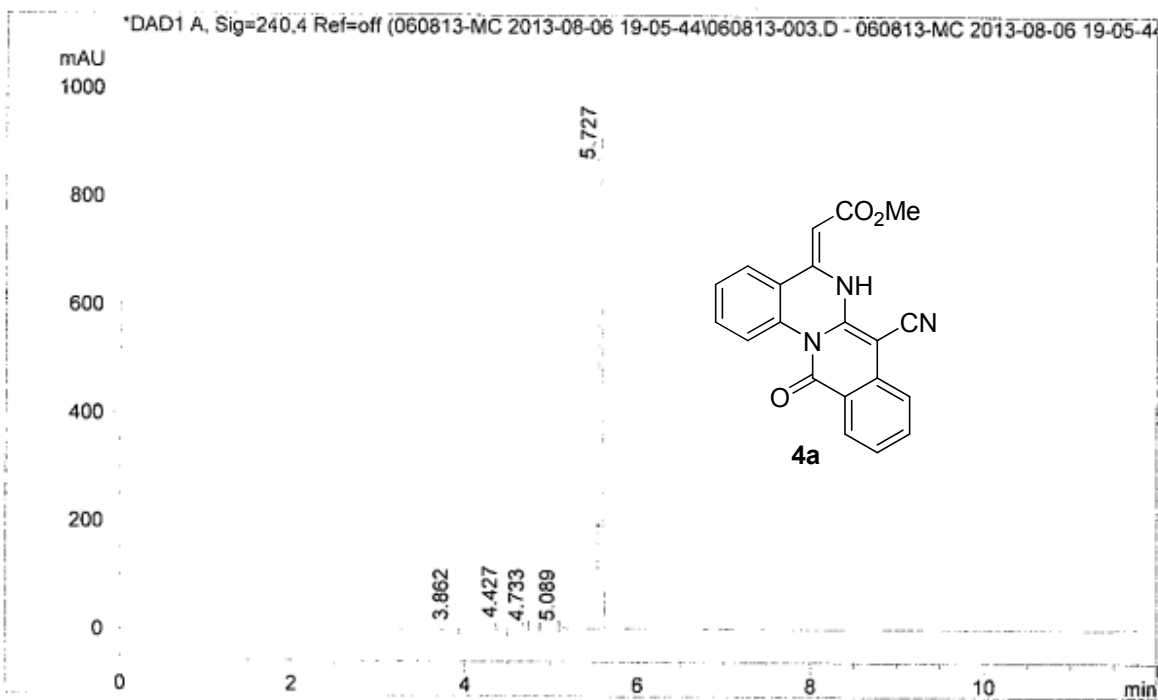


Signal 1: DAD1 A, Sig=230,5 Ref=off

Peak #	RT [min]	Area	Area %
1	1.553	1.958	0.023
2	1.607	1.019	0.012
3	2.157	13.370	0.159
4	2.371	18.903	0.224
5	4.129	20.280	0.241
6	4.259	49.344	0.586
7	4.647	2.126	0.025
8	5.301	2.924	0.035
9	5.449	8245.056	97.876
10	5.828	67.835	0.805
11	6.639	1.163	0.014

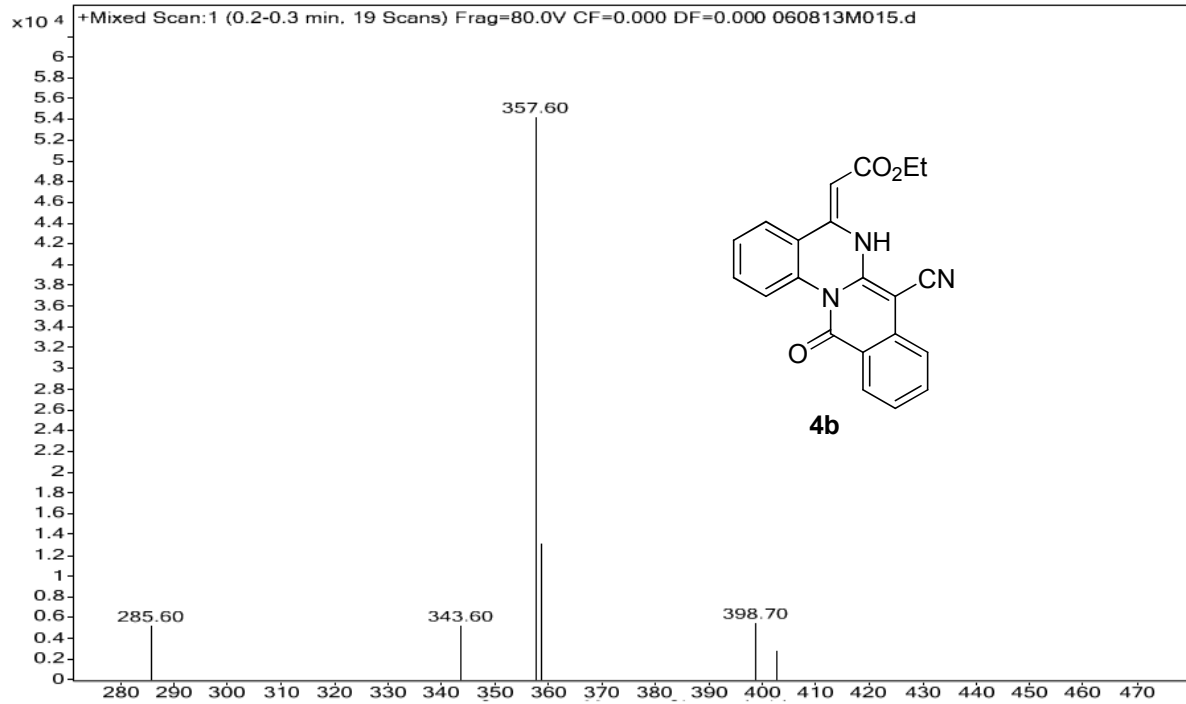


Injection Date : Tue, 6. Aug. 2013  
 Sample Name : ILS-ARJ-4-68  
 Acq Operator : RADHA  
 Acq. Method : D:\chem32\1\DATA\060813-MC 2013-08-06 19-05-44\C-18 ->  
 Analysis Method : D:\CHEM32\_002\1\METHODS\C-18 A80B20GM.M  
 Method Info : Column:Symmetry C-18 75\*4.6mm,3.5µ  
 Mobile phase: A) 0.1% HCOOH in Water , B) ACN  
 T/B%:0/50,1/50,4/98,10/98,10.5/50,12/50  
 Flow: 1.0 ml/min, Diluent: ACN:Water(90:10)



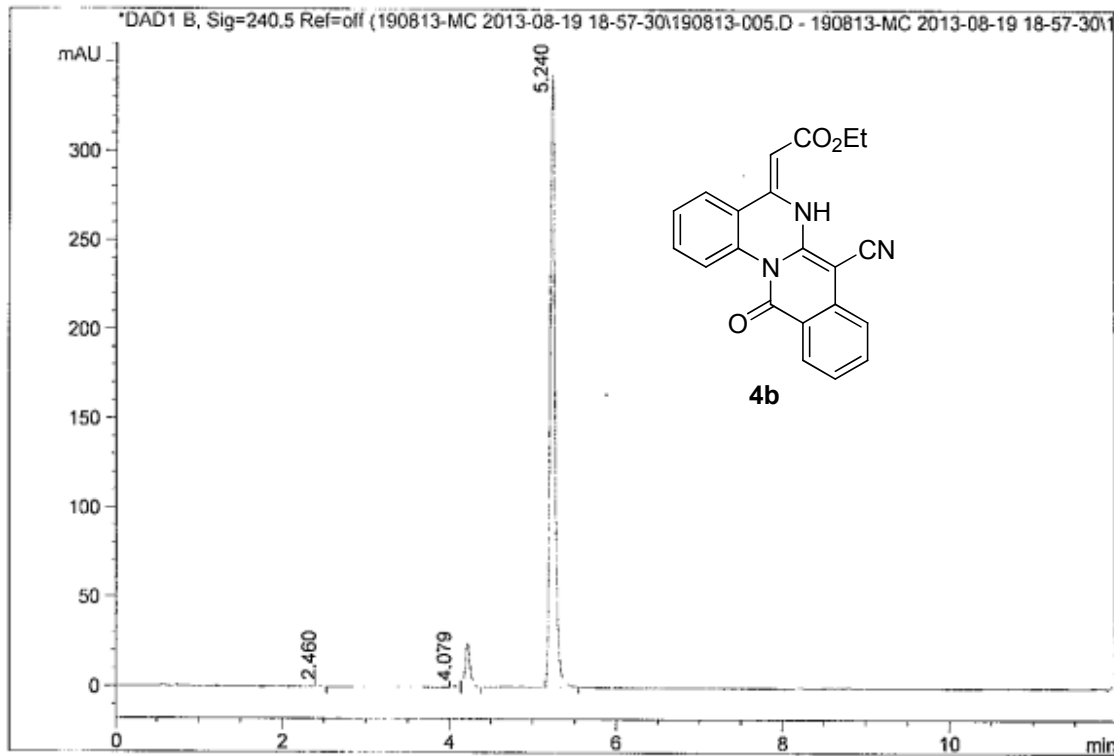
Signal 1: DAD1 A, Sig=240,4 Ref=off

Peak #	RT [min]	Area	Area %
1	3.862	16.002	0.470
2	4.427	82.888	2.666
3	4.733	8.814	0.259
4	4.785	45.060	1.324
5	5.089	5.246	0.154
6	5.727	3215.073	95.126



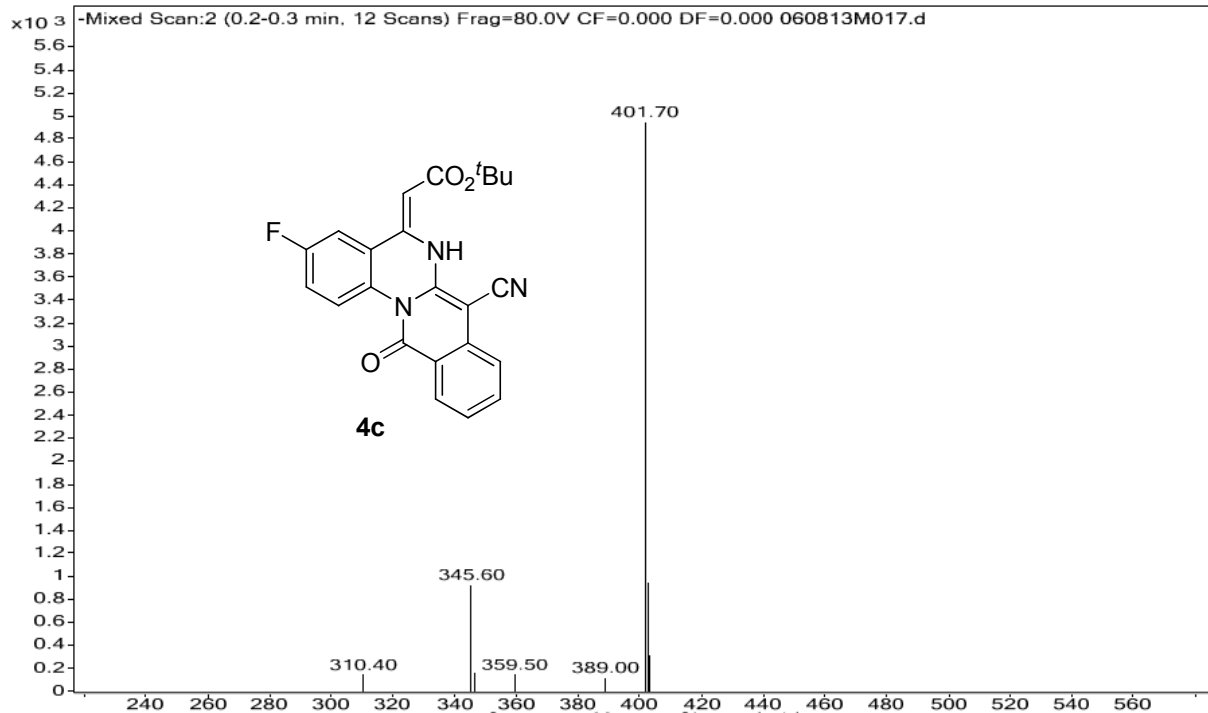
Injection Date : Mon, 19. Aug. 2013  
 Sample Name : ILS-ARJ-4-64  
 Acq Operator : RADHA  
 Acq. Method : D:\chem32\1\DATA\190813-MC 2013-08-19 18-57-30\C-18 ->  
 Analysis Method : D:\CHEM32\_002\1\METHODS\C-18 A50B50-GM.M  
 Method Info : Column : Symmetry C-18 75\*4.6mm,3.5µm  
 Mobile phase: A) 0.1% HCOOH in Water , B) ACN  
 T/B%:0/50,1/50,4/98,10/98,10.5/50,12/50  
 Flow: 1.0 ml/min, Diluent: ACN:Water(90:10)

Seq Line : 5  
 Location : Vial 13  
 Inj. No. : 1  
 Inj. Vol. : 5 µl

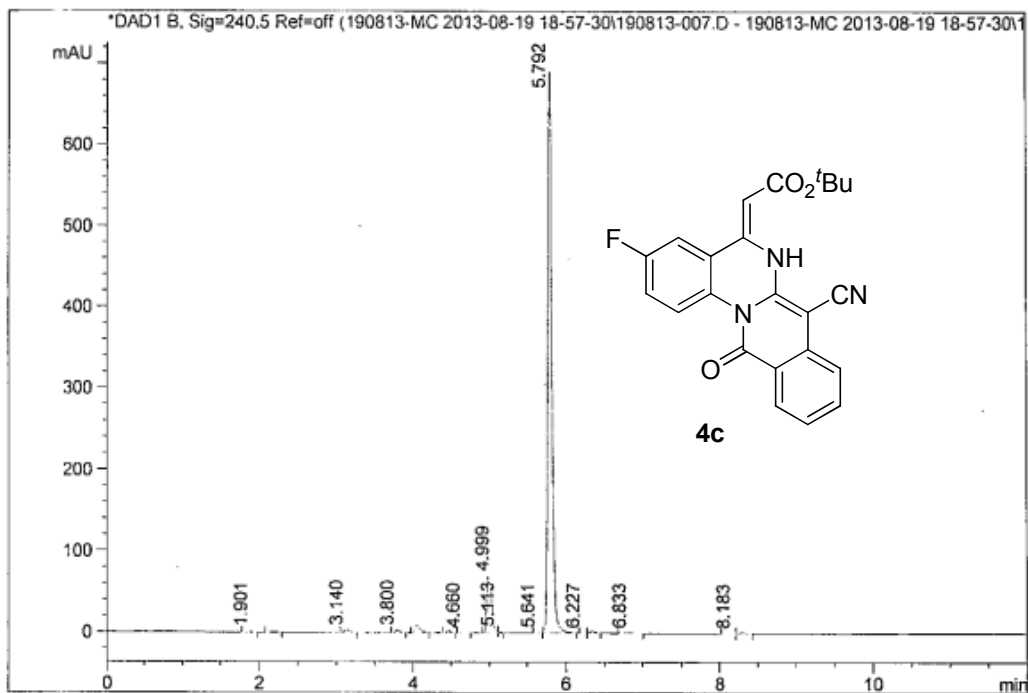


Signal 1: DAD1 B, Sig=240,5 Ref=off

Peak #	RT [min]	Area	Area %
1	2.460	1.248	0.086
2	4.079	2.312	0.158
3	4.222	95.930	6.573
4	5.240	1359.985	93.183



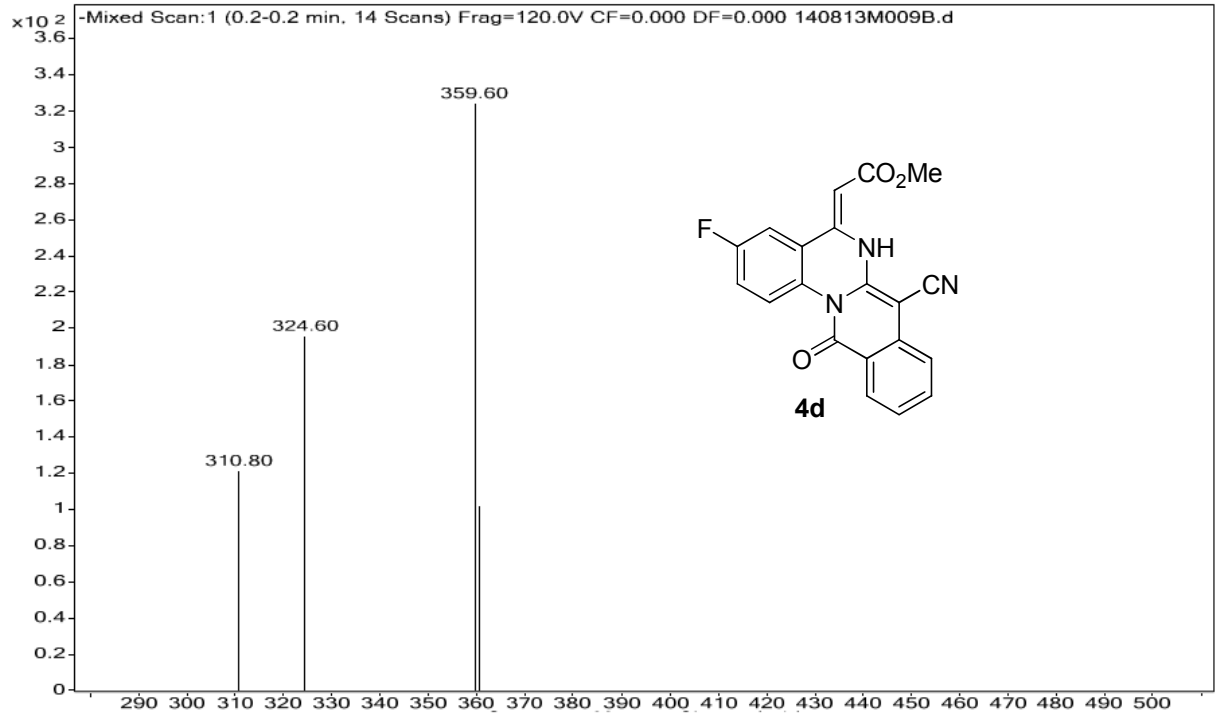
	Seq Line : /
Injection Date : Mon, 19. Aug. 2013	Location : Vial 15
Sample Name : ILS-ARJ-4-11	Inj. No. : 1
Acq Operator : RADHA	Inj. Vol. : 5 $\mu$ l
Acq. Method : D:\chem32\1\DATA\190813-MC 2013-08-19 18-57-30\C-18 ->	
Analysis Method : D:\CHEM32_002\1\METHODS\C-18 A50B50-GM.M	
Method Info : Column : Symmetry C-18 75*4.6mm,3.5 $\mu$ m	
Mobile phase: A) 0.1% HCOOH in Water , B) ACN	
T/B%:0/50,1/50,4/98,10/98,10.5/50,12/50	
Flow: 1.0 ml/min, Diluent: ACN:Water(90:10)	



Signal 1: DAD1 B, Sig=240,5 Ref=off

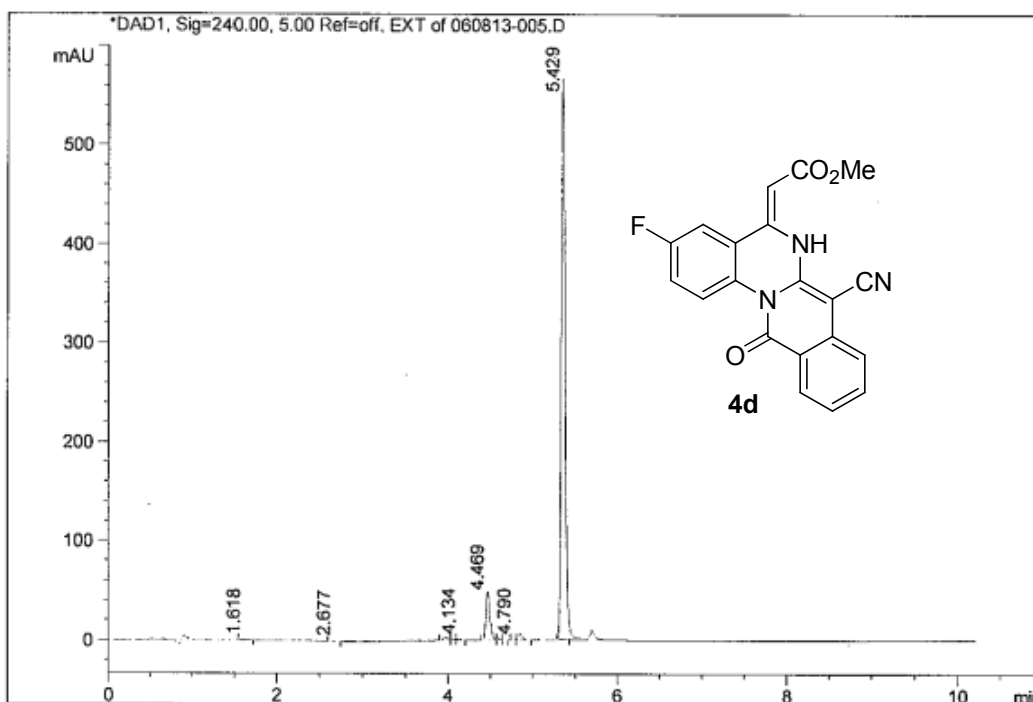
Peak #	RT [min]	Area	Area %
1	1.901	2.375	0.078
2	2.191	3.200	0.105
3	3.140	14.892	0.491
4	3.800	13.069	0.431
5	4.059	36.089	1.189
6	4.469	6.969	0.230
7	4.660	1.179	0.039
8	4.999	320.646	5.464
9	5.113	2.288	0.075
10	5.641	1.287	0.042
11	5.792	2602.894	90.858
12	6.227	1.314	0.043





Injection Date : Tue, 6. Aug. 2013  
 Sample Name : ILS-ARJ-4-42  
 Acq Operator : RADHA  
 Acq. Method : D:\chem32\1\DATA\060813-MC 2013-08-06 19-05-44\C-18 ->  
 Analysis Method : D:\CHEM32\_002\1\METHODS\C-18 A80B20GM.M  
 Method Info : Column:Symmetry C-18 75\*4.6mm,3.5µ  
 Mobile phase: A) 0.1% HCOOH in Water , B) ACN  
 T/B%:0/50,1/50,4/98,10/98,10.5/50,12/50  
 Flow: 1.0 ml/min, Diluent: ACN:Water(90:10)

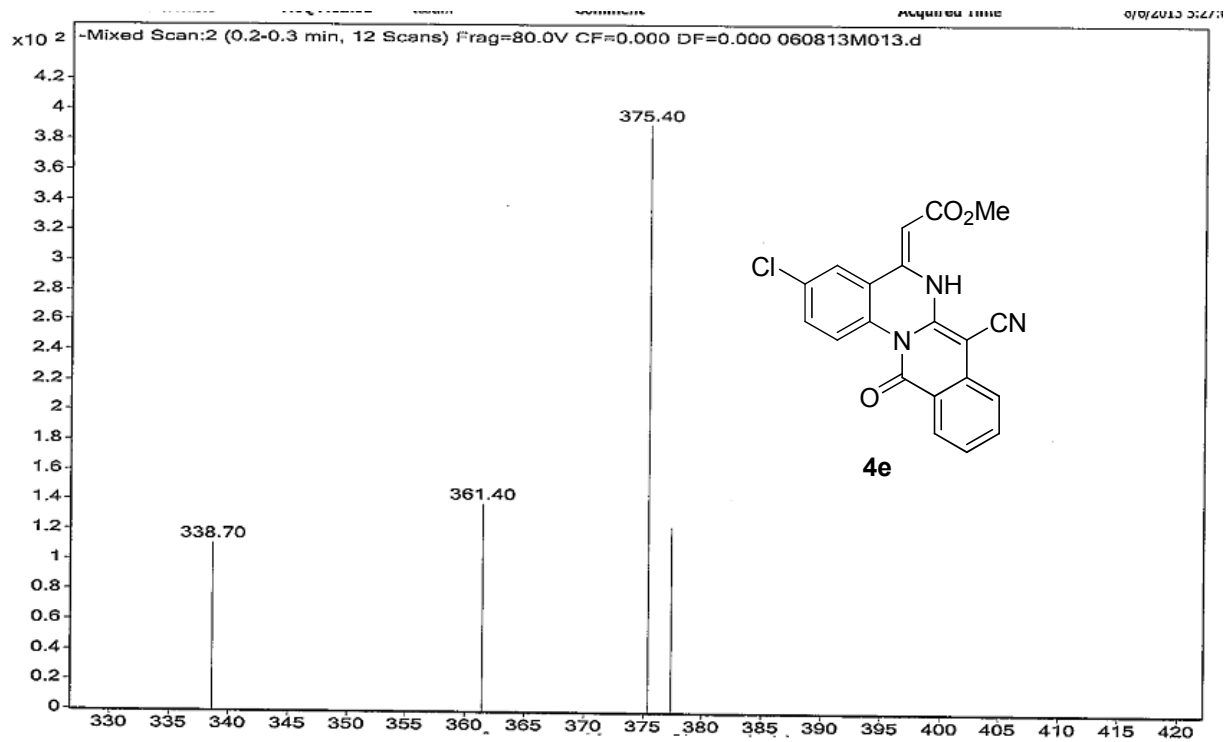
Seq Line : 5  
 Location : Vial 24  
 Inj. No. : 1  
 Inj. Vol. : 5 µl



Signal 1: DAD1, Sig=240.00, 5.00 Ref=off, EXT

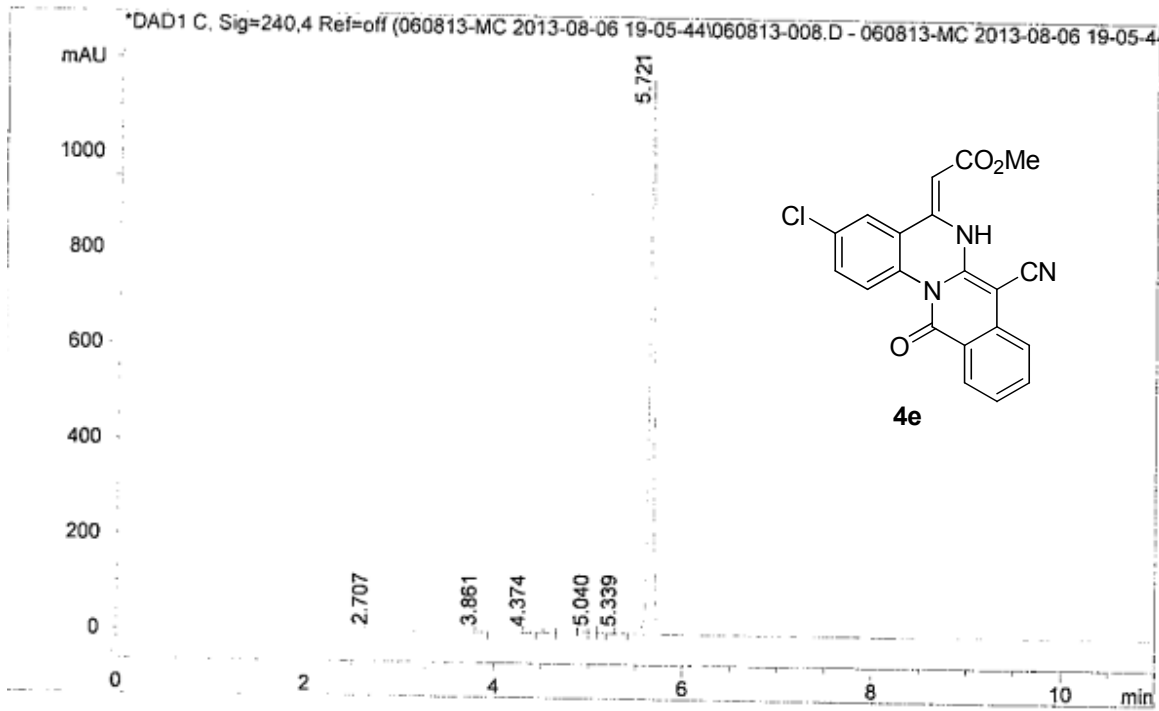
Peak #	RT [min]	Area	Area-%
1	1.618	1.931	0.092
2	2.677	1.649	0.079
3	3.974	10.801	0.517
4	4.056	3.673	0.176
5	4.134	3.126	0.149
6	4.469	110.077	5.525
7	4.595	4.004	0.191
8	4.634	1.256	0.060
9	4.790	1.245	0.060
10	4.860	19.489	0.932
11	5.429	1923.689	92.319

*RP*  
*07/08*



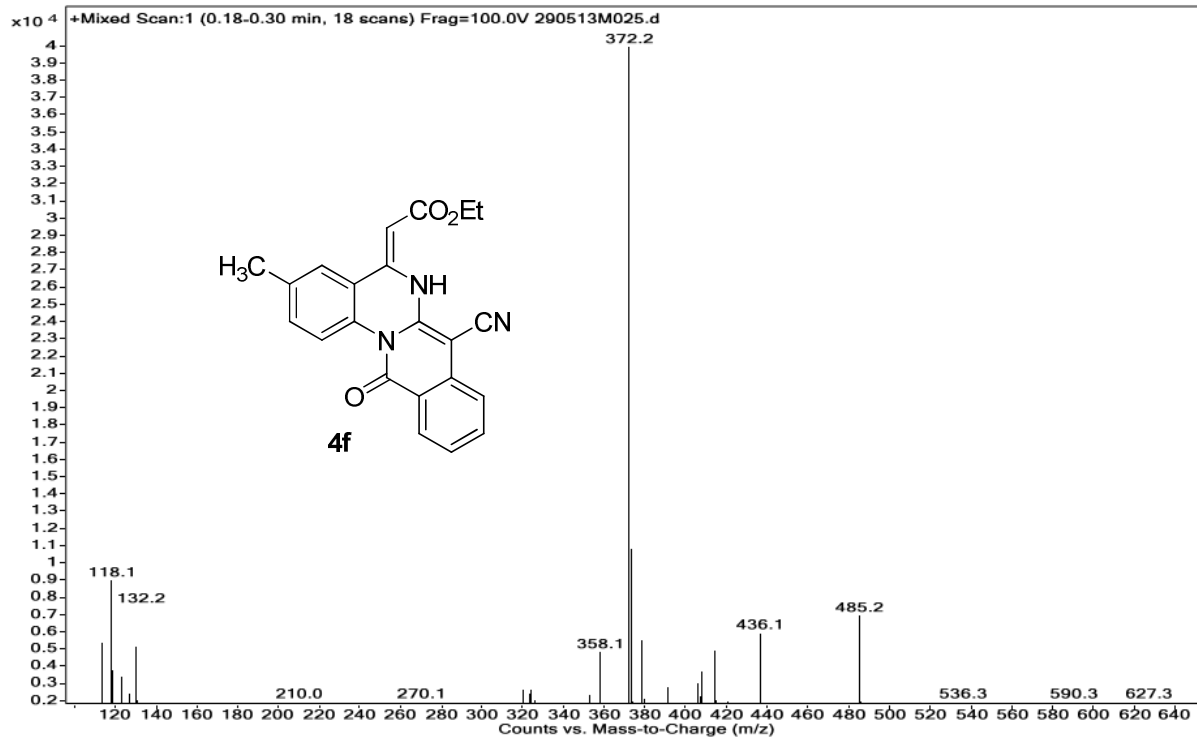
Injection Date : Tue, 6. Aug. 2013  
 Sample Name : ILS-ARJ-4-22  
 Acq Operator : RADHA  
 Acq. Method : D:\chem32\1\DATA\060813-MC 2013-08-06 19-05-44\C-18 ->  
 Analysis Method : D:\CHEM32\_002\1\METHODS\C-18 A80B20GM.M  
 Method Info : Column:Symmetry C-18 75\*4.6mm,3.5µ  
 Mobile phase: A) 0.1% HCOOH in Water , B) ACN  
 T/B%:0/50,1/50,4/98,10/98,10.5/50,12/50  
 Flow: 1.0 ml/min, Diluent: ACN:Water(90:10)

Seq Line : 8  
 Location : Vial 21  
 Inj. No. : 1  
 Inj. Vol. : 5 µl



Signal 1: DAD1 C, Sig=240,4 Ref=off

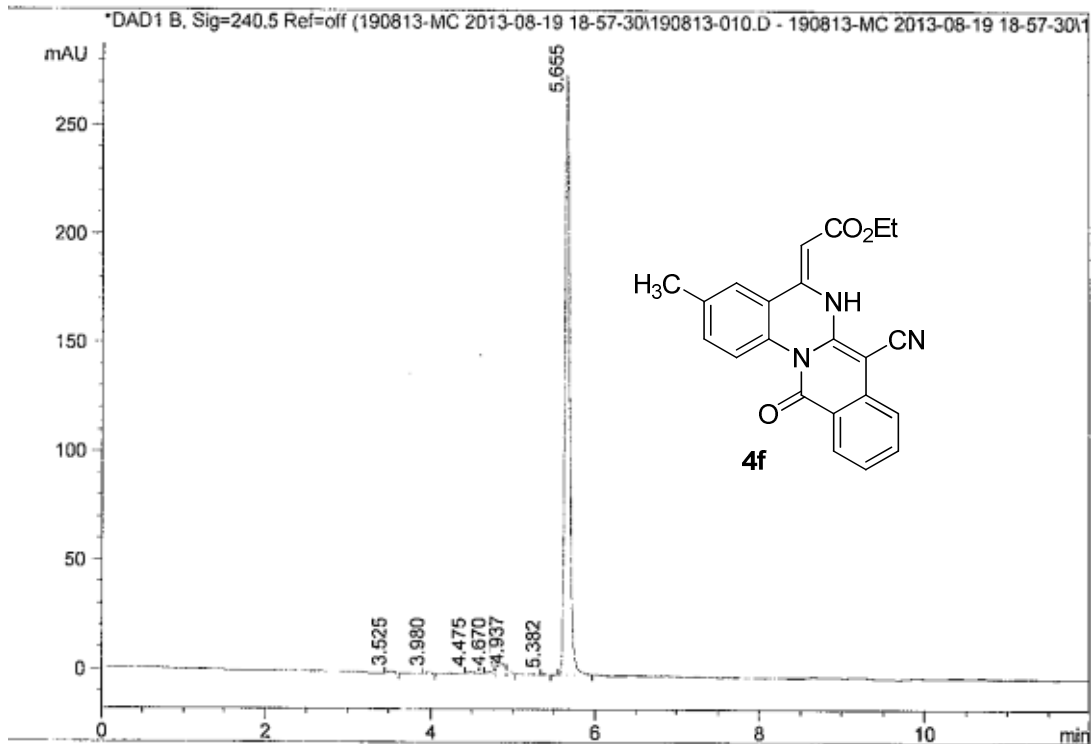
Peak #	RT [min]	Area	Area %
1	2.707	1.867	0.048
2	3.861	5.225	0.135
3	4.374	133.317	2.486
4	4.583	2.869	0.074
5	4.895	13.728	0.355
6	5.040	121.156	2.330
7	5.127	4.488	0.116
8	5.339	7.467	0.193
9	5.721	3628.149	94.263



```

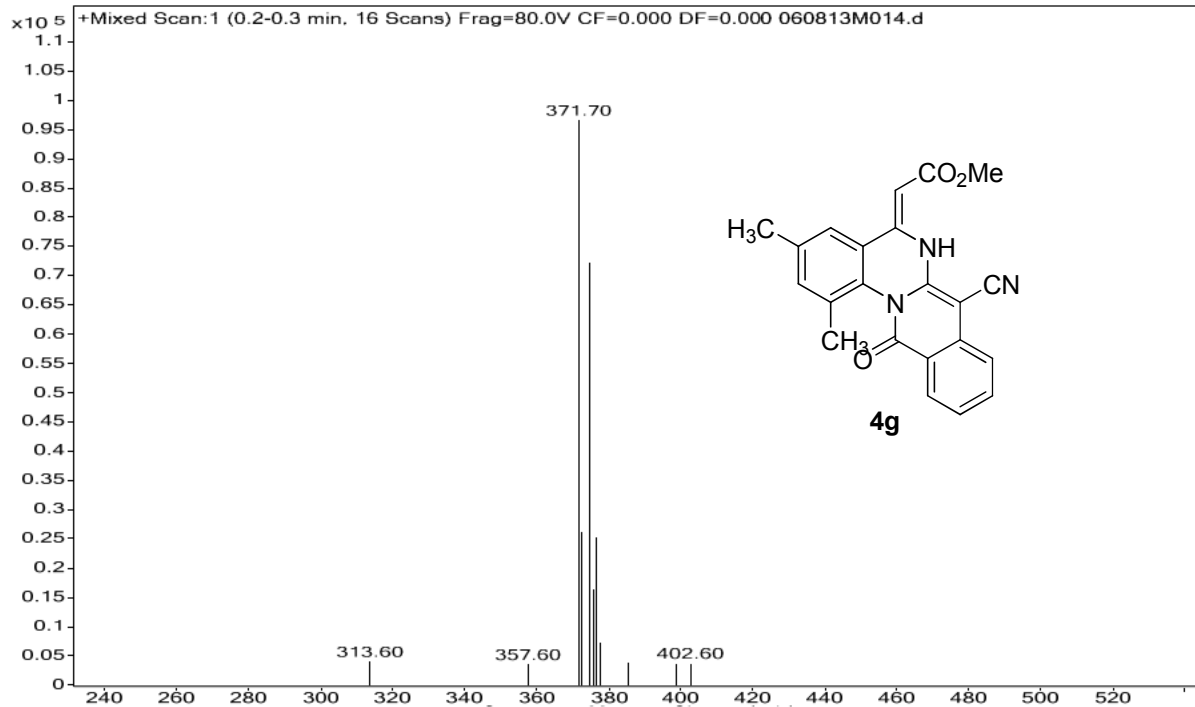
Injection Date  : Mon, 19. Aug. 2013                Seq Line   :           10
Sample Name    : ILS-ARJ-4-4                       Location    :           Vial 18
Acq Operator   : RADHA                               Inj. No.   :           1
Acq. Method    : D:\chem32\1\DATA\190813-MC 2013-08-19 18-57-30\C-18 -> Inj. Vol.  :           5 µl
Analysis Method : D:\CHEM32_002\1\METHODS\C-18 A50B50-GM.M
Method Info    : Column : Symmetry C-18 75*4.6mm,3.5µm
                  Mobile phase: A) 0.1% HCOOH in Water , B) ACN
                  T/B%:0/50,1/50,4/98,10/98,10.5/50,12/50
                  Flow: 1.0 ml/min, Diluent: ACN:Water(90:10)

```



Signal 1: DAD1 B, Sig=240,5 Ref=off

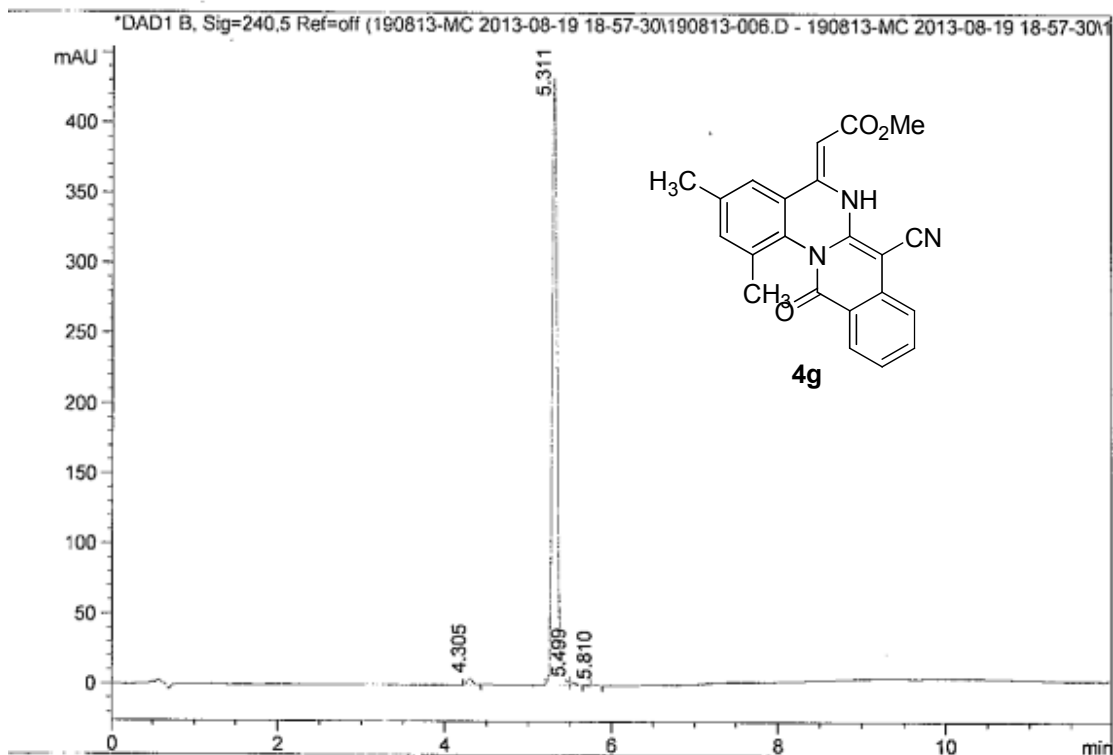
Peak #	RT [min]	Area	Area %
1	3.525	4.250	0.321
2	3.980	3.649	0.275
3	4.475	3.740	0.282
4	4.670	53.400	3.834
5	4.848	30.174	2.276
6	4.937	6.652	0.502
7	5.382	1.860	0.140
8	5.655	1091.989	91.470



```

Injection Date   : Mon, 19. Aug. 2013
Sample Name      : ILS-ARJ-4-63
Acq Operator     : RADHA
Acq. Method      : D:\chem32\1\DATA\190813-MC 2013-08-19 18-57-30\C-18 ->
Analysis Method  : D:\CHEM32_002\1\METHODS\C-18 A50B50-GM.M
Method Info      : Column : Symmetry C-18 75*4.6mm,3.5µm
                   Mobile phase: A) 0.1% HCOOH in Water , B) ACN
                   T/B%:0/50,1/50,4/98,10/98,10.5/50,12/50
                   Flow: 1.0 ml/min, Diluent: ACN:Water(90:10)
Seq Line        :
Location        : Vial 14
Inj. No.       : 1
Inj. Vol.      : 8 µl

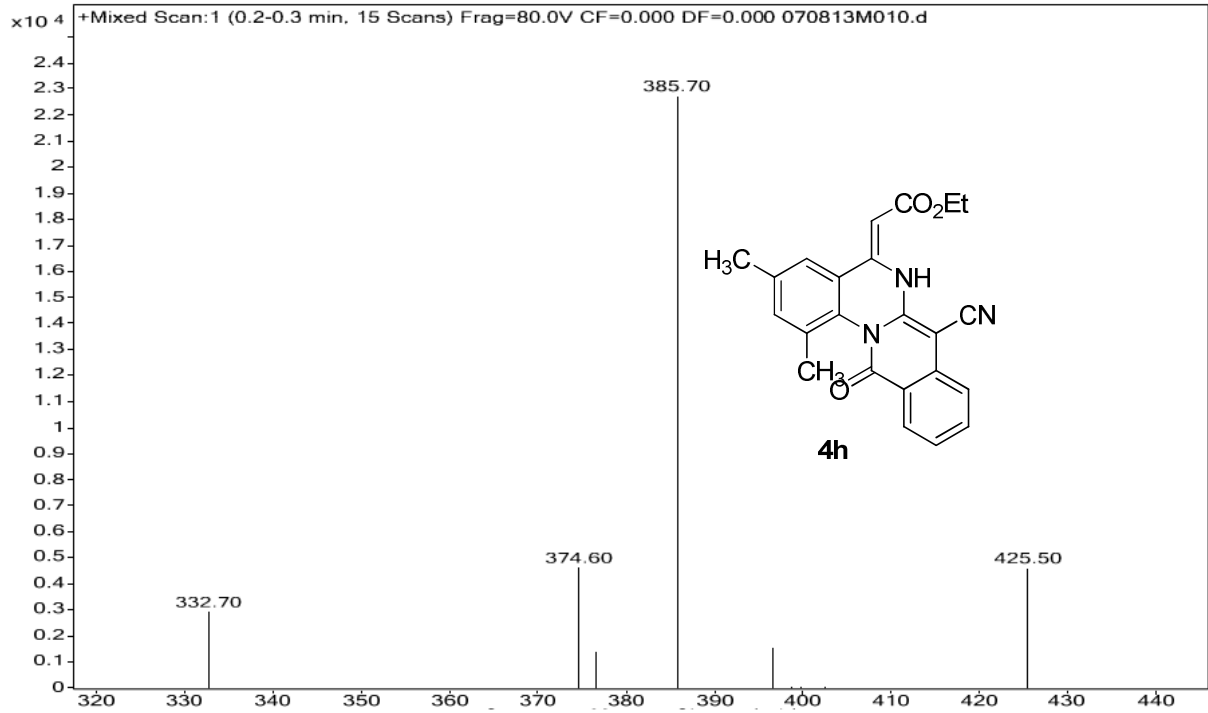
```



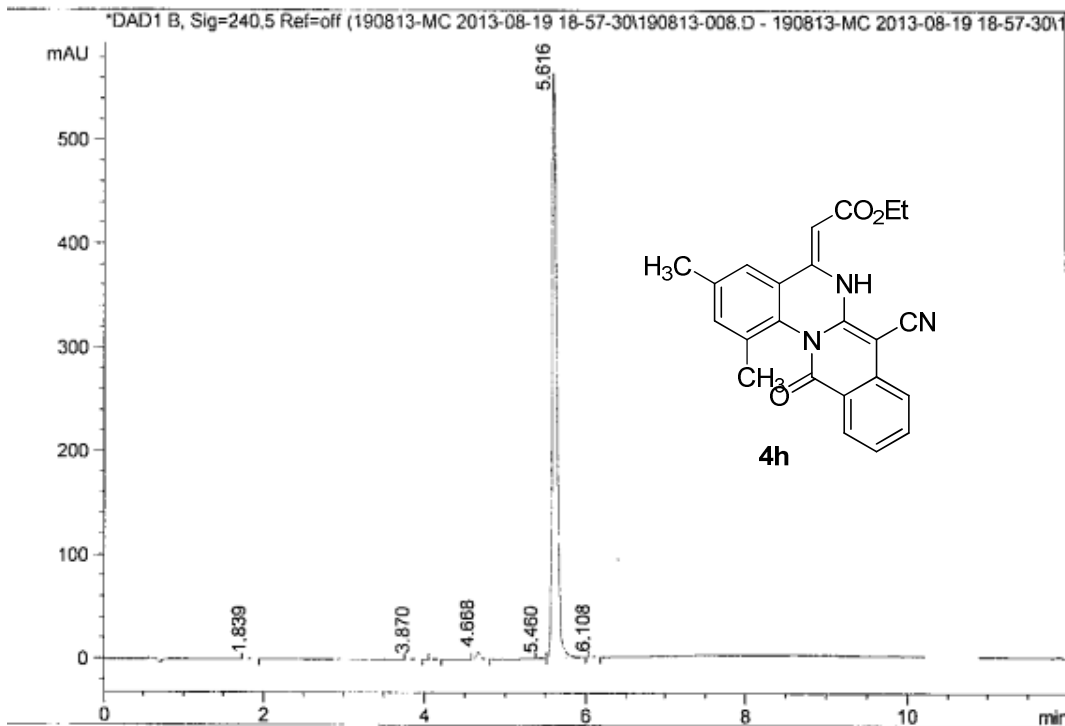
Signal 1: DAD1 B, Sig=240,5Ref=off

Peak #	RT [min]	Area	Area %
1	4.305	19.110	1.089
2	5.311	1725.353	98.366
3	5.499	7.662	0.437
4	5.810	1.892	0.108





Injection Date	: Mon, 19. Aug. 2013	Seq Line	: 8
Sample Name	: ILS-ARJ-4-70	Location	: Vial 16
Acq Operator	: RADHA	Inj. No.	: 1
Acq. Method	: D:\chem32\1\DATA\190813-MC 2013-08-19 18-57-30\C-18 ->	Inj. Vol.	: 8 µl
Analysis Method	: D:\CHEM32_002\1\METHODS\C-18 A50B50-GM.M		
Method Info	: Column : Symmetry C-18 75*4.6mm,3.5µm		
	Mobile phase: A) 0.1% HCOOH in Water , B) ACN		
	T/B%:0/50,1/50,4/98,10/98,10.5/50,12/50		
	Flow: 1.0 ml/min, Diluent: ACN:Water(90:10)		



Signal 1: DAD1 B, Sig=240,5 Ref=off

Peak #	RT [min]	Area	Area %
1	1.839	1.258	0.056
2	3.870	2.907	0.129
3	4.129	2.806	0.124
4	4.668	27.931	1.238
5	5.460	1.685	0.075
6	5.616	2217.449	98.288
7	6.108	2.029	0.090

RF  
20/08/13