

## Supporting Information-III

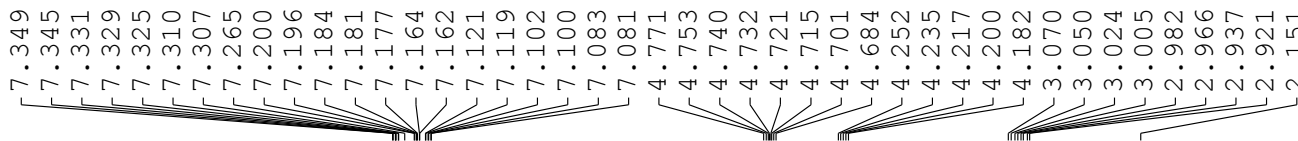
### NMR Spectral Data

# Asymmetric Synthesis of Tetrahydroquinolines through Supramolecular Organocatalysis

**Dhevalapally B. Ramachary,\* and Kodambahalli S. Shruthi**

*Catalysis Laboratory, School of Chemistry, University of Hyderabad, Central University (P.O.),  
Hyderabad 500 046, India*

*E-mail: [ramsc@uohyd.ernet.in](mailto:ramsc@uohyd.ernet.in) or [ramchary.db@gmail.com](mailto:ramchary.db@gmail.com)*

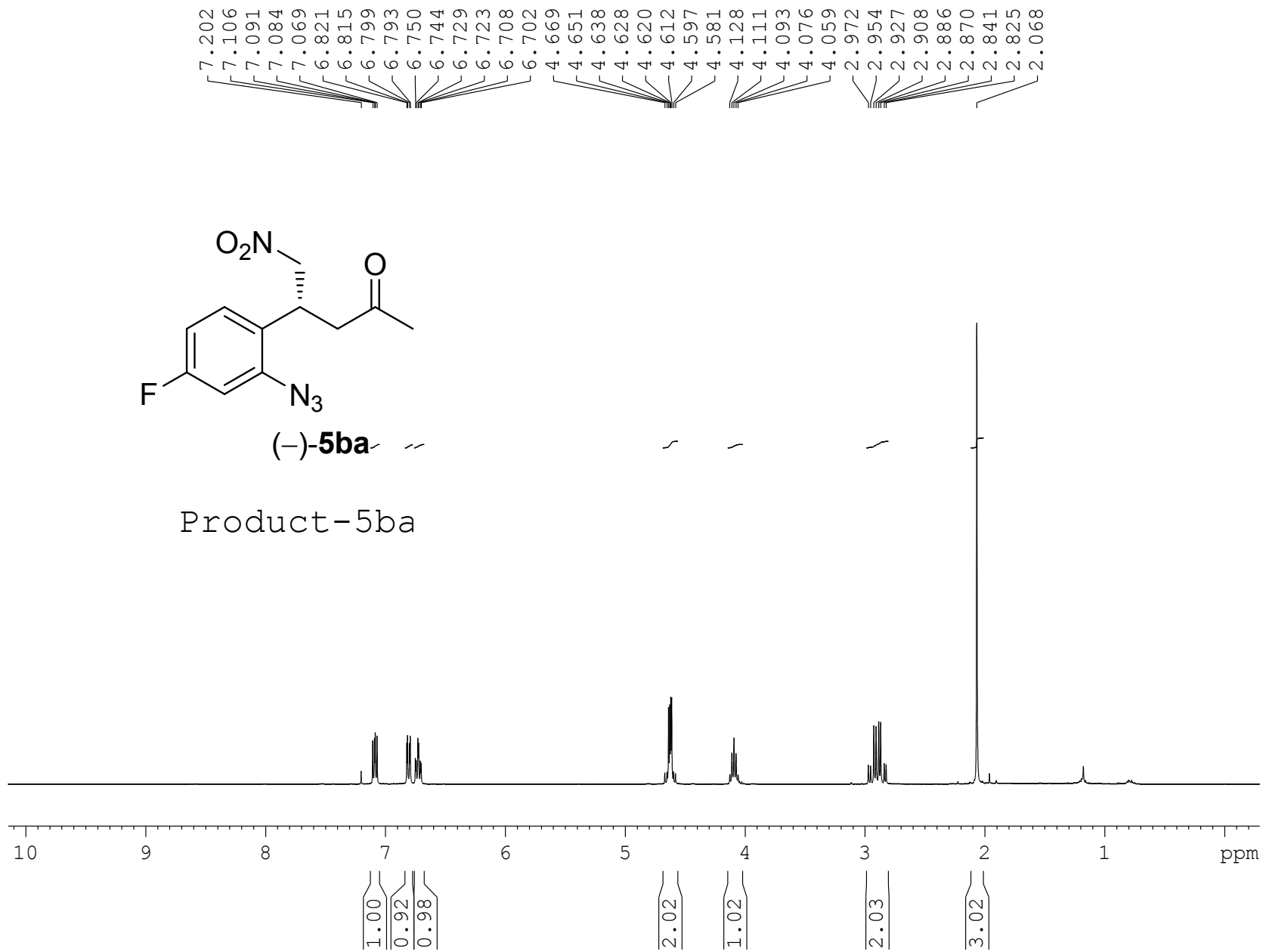


— 205.52

— 137.78  
— 129.39  
— 129.13  
— 125.18  
— 118.66

— 77.68  
— 77.32  
— 77.00  
— 76.68

— 44.54  
— 34.95  
— 30.21



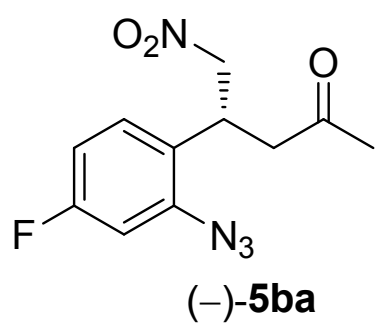
— 205.32

— 163.74  
— 161.26

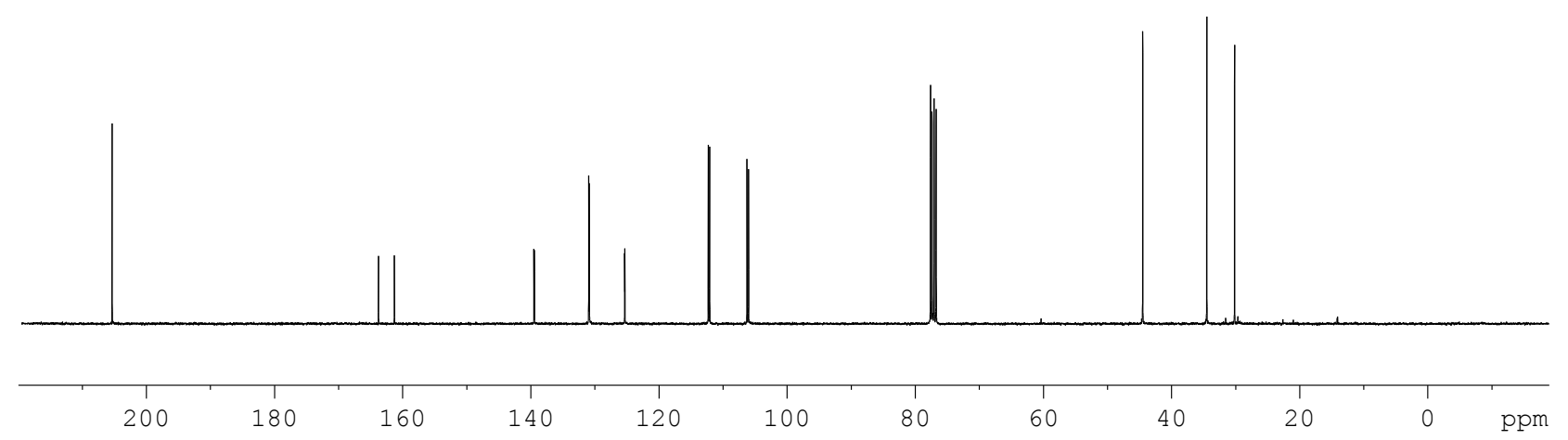
— 139.47  
— 139.39  
— 130.92  
— 130.82  
— 125.31  
— 125.27  
— 112.25  
— 112.04  
— 106.21  
— 105.96

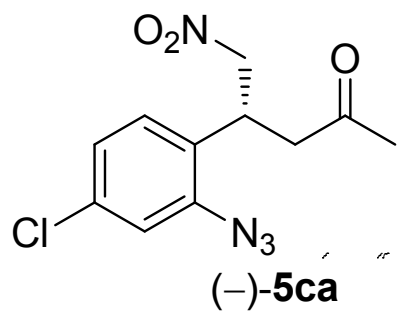
— 77.57  
— 77.32  
— 77.00  
— 76.68

— 44.43  
— 34.43  
— 30.09

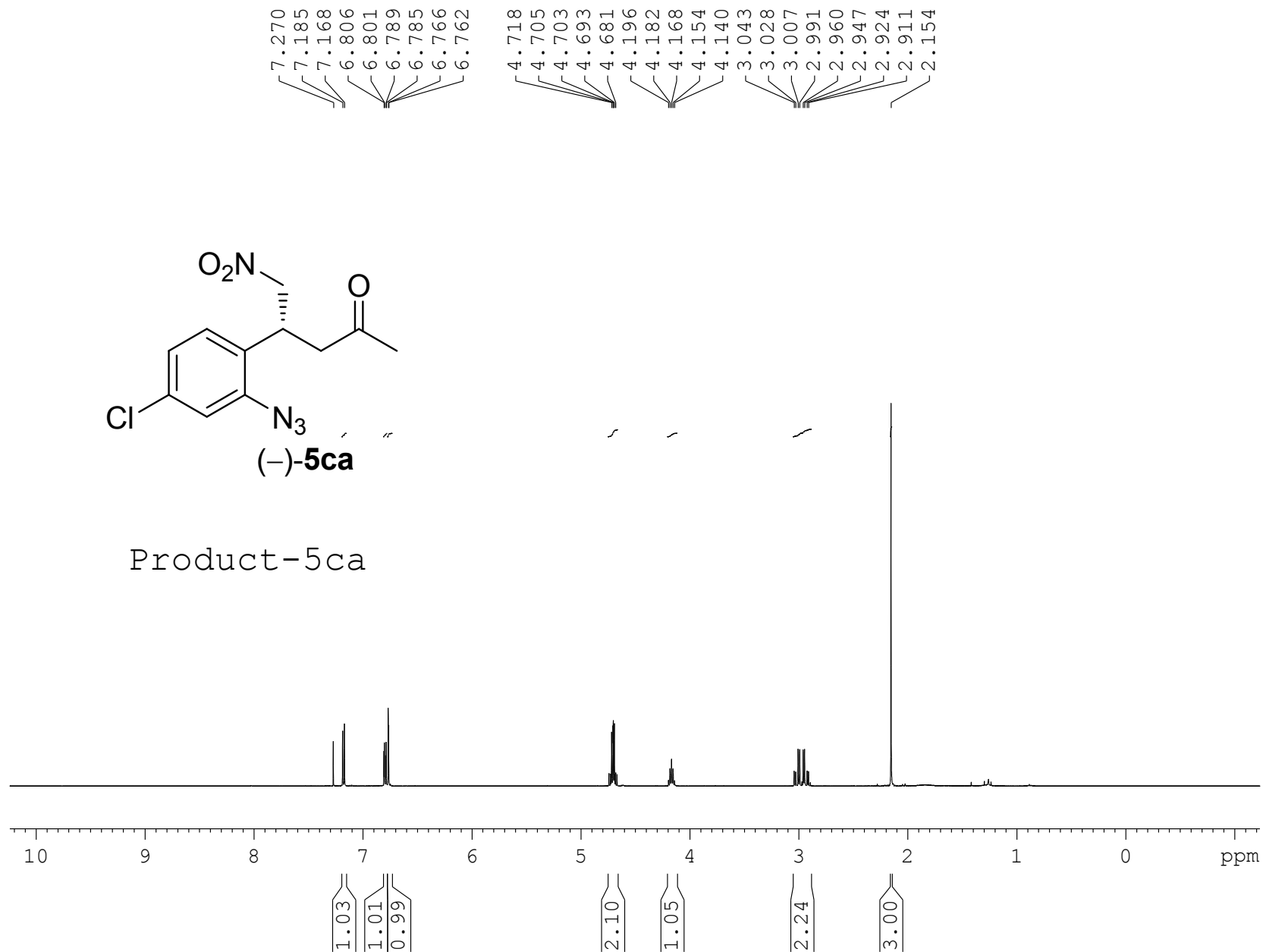


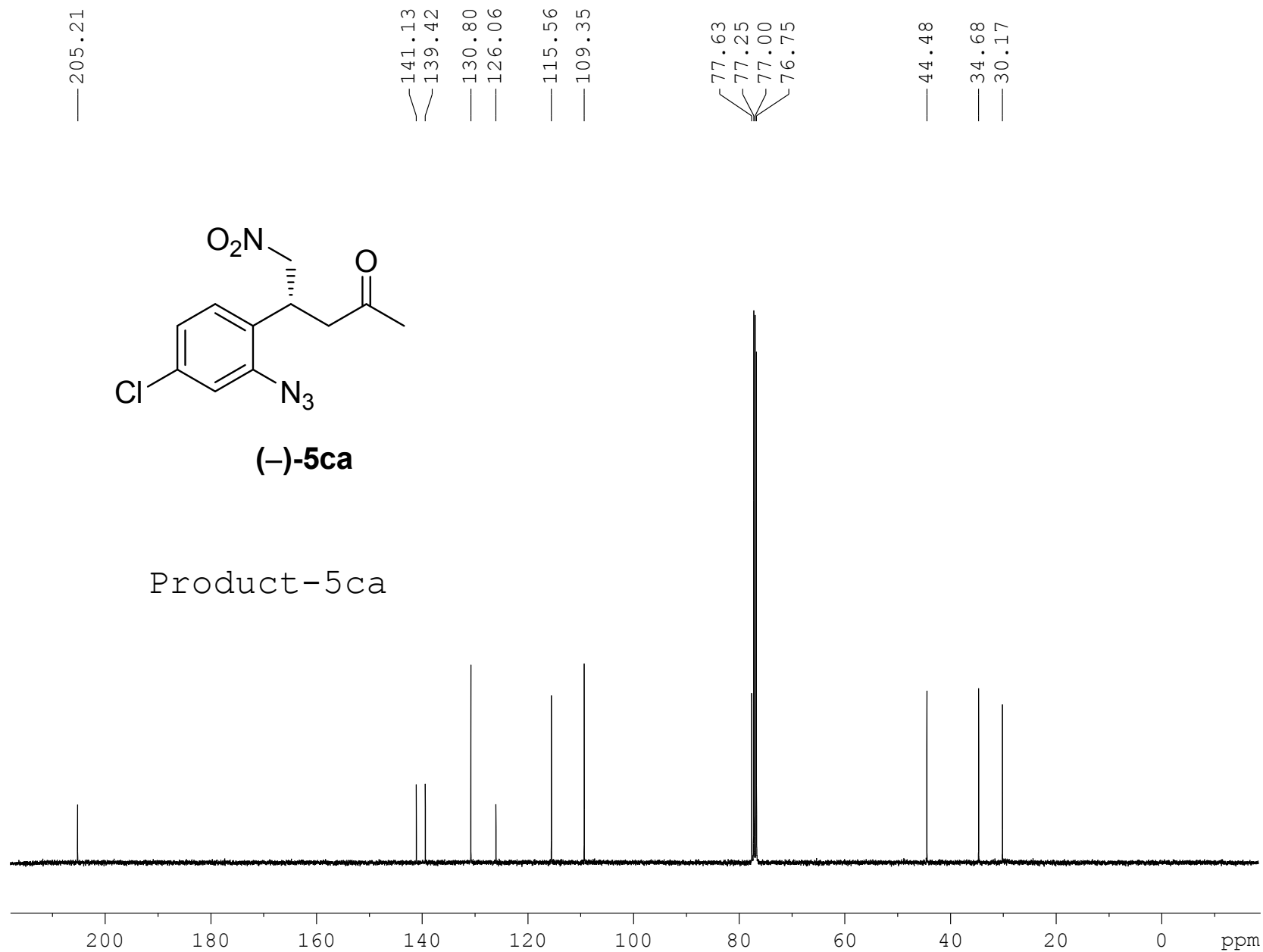
Product-5ba

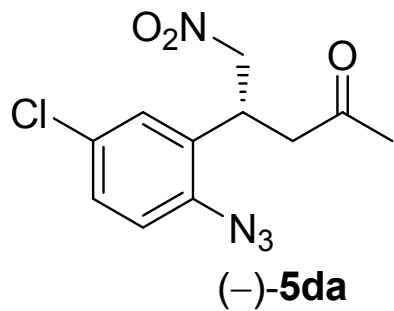




Product-5ca







Product-5da



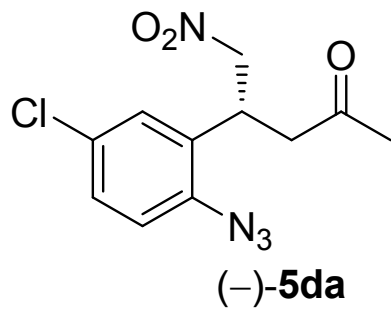
— 205.05

136.45  
131.18  
130.37  
129.42  
129.02  
119.83

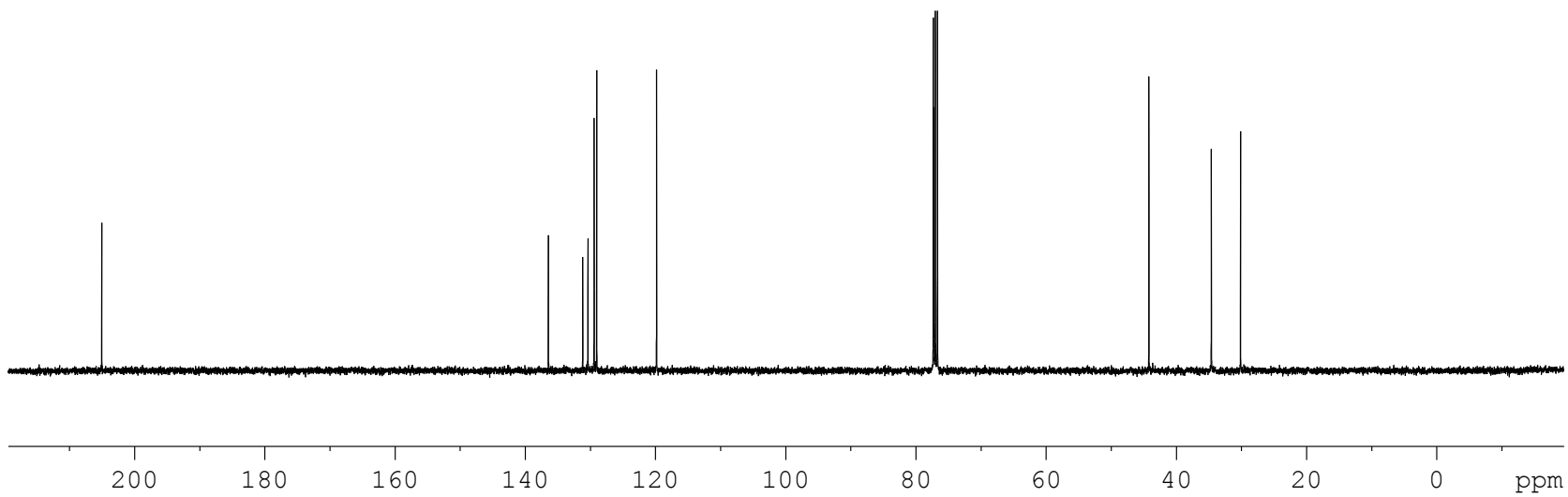
77.32  
77.23  
77.00  
76.68

— 44.20

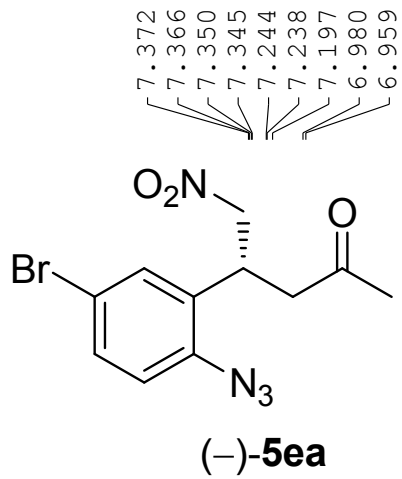
— 34.61  
— 30.12



Product-5da





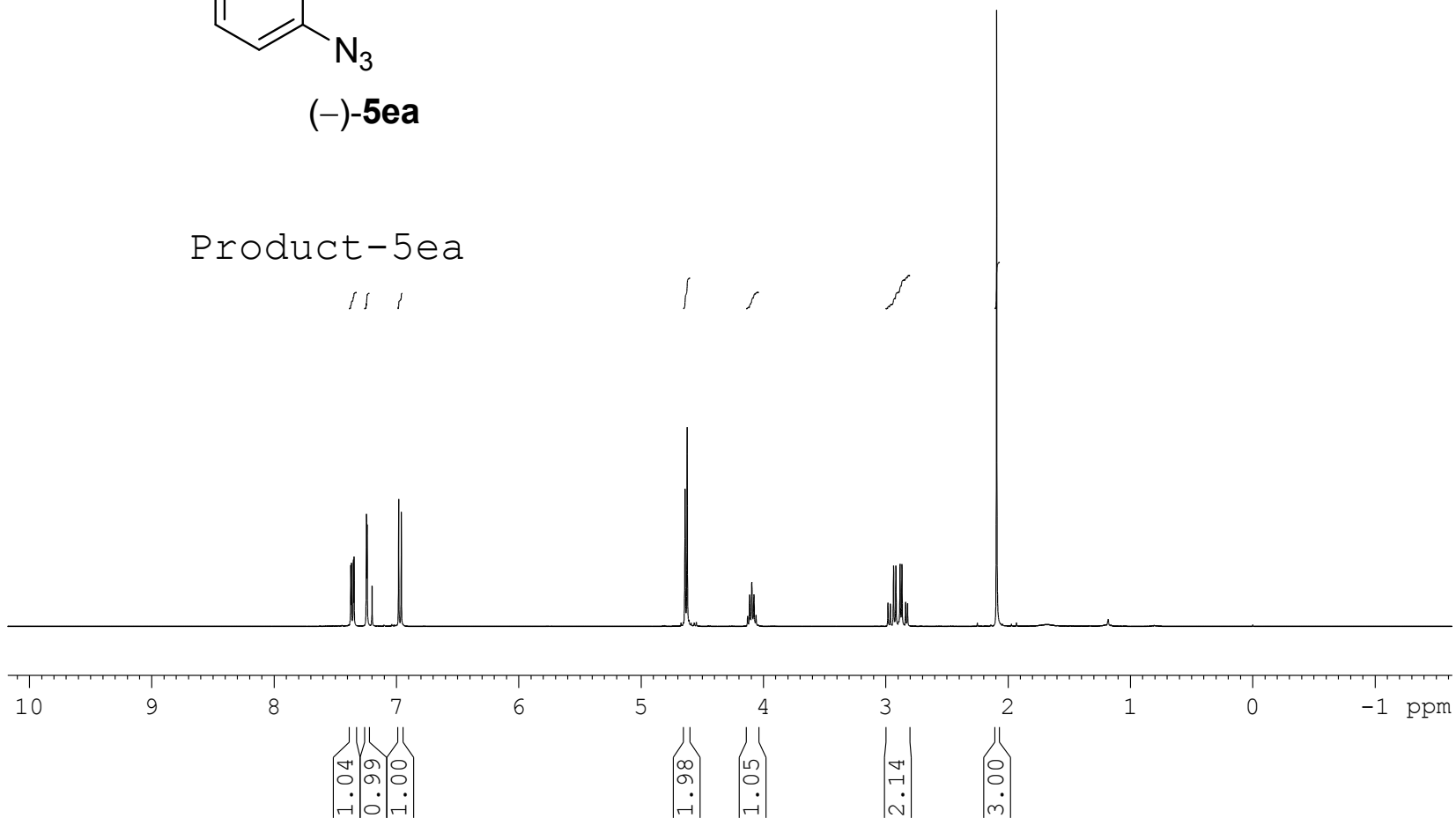


7.372  
 7.366  
 7.350  
 7.345  
 7.244  
 7.238  
 7.197  
 6.980  
 6.959

4.639  
 4.622  
 4.128  
 4.111  
 4.093  
 4.076  
 4.059  
 2.982  
 2.963  
 2.936  
 2.917  
 2.883  
 2.868  
 2.838  
 2.822  
 2.094

Product-5ea

|||

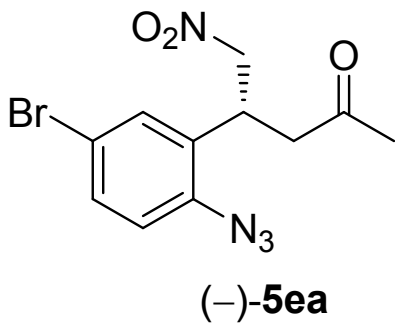


— 205.03

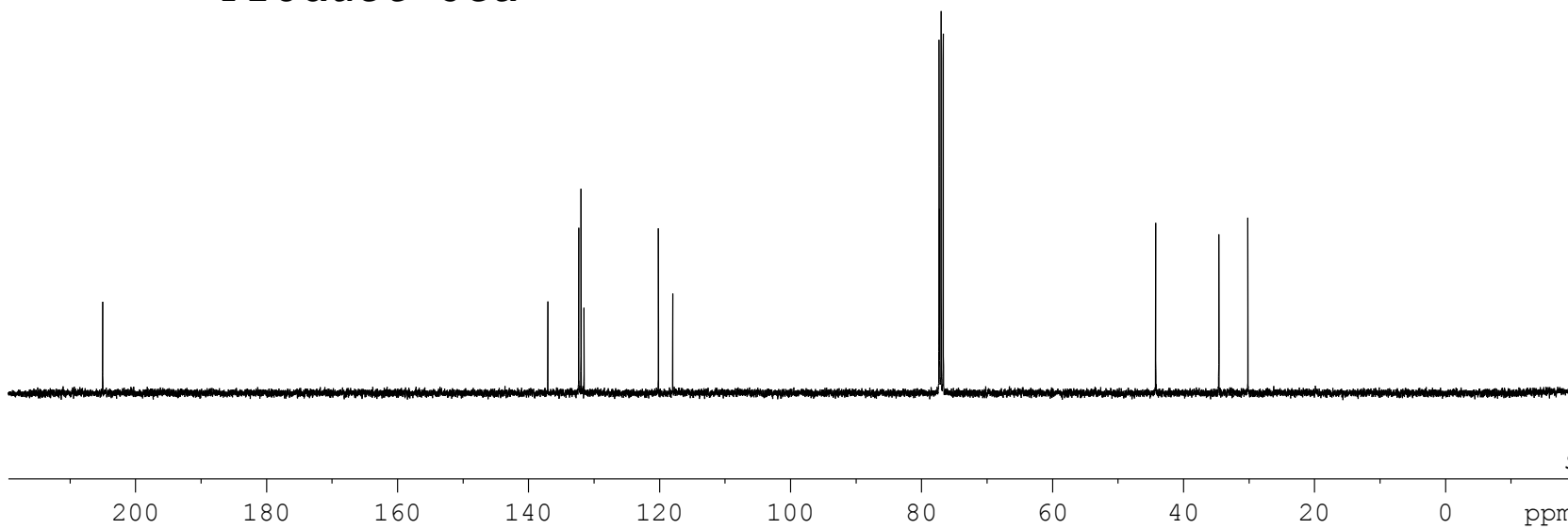
137.06  
132.34  
131.99  
131.54  
120.17  
117.98

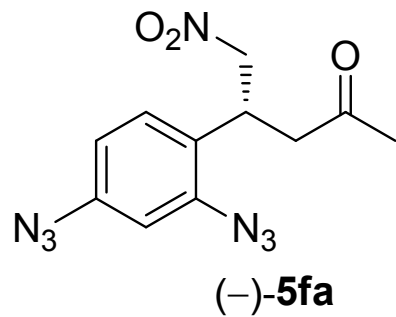
77.32  
77.25  
77.00  
76.68

— 44.24  
— 34.59  
— 30.16

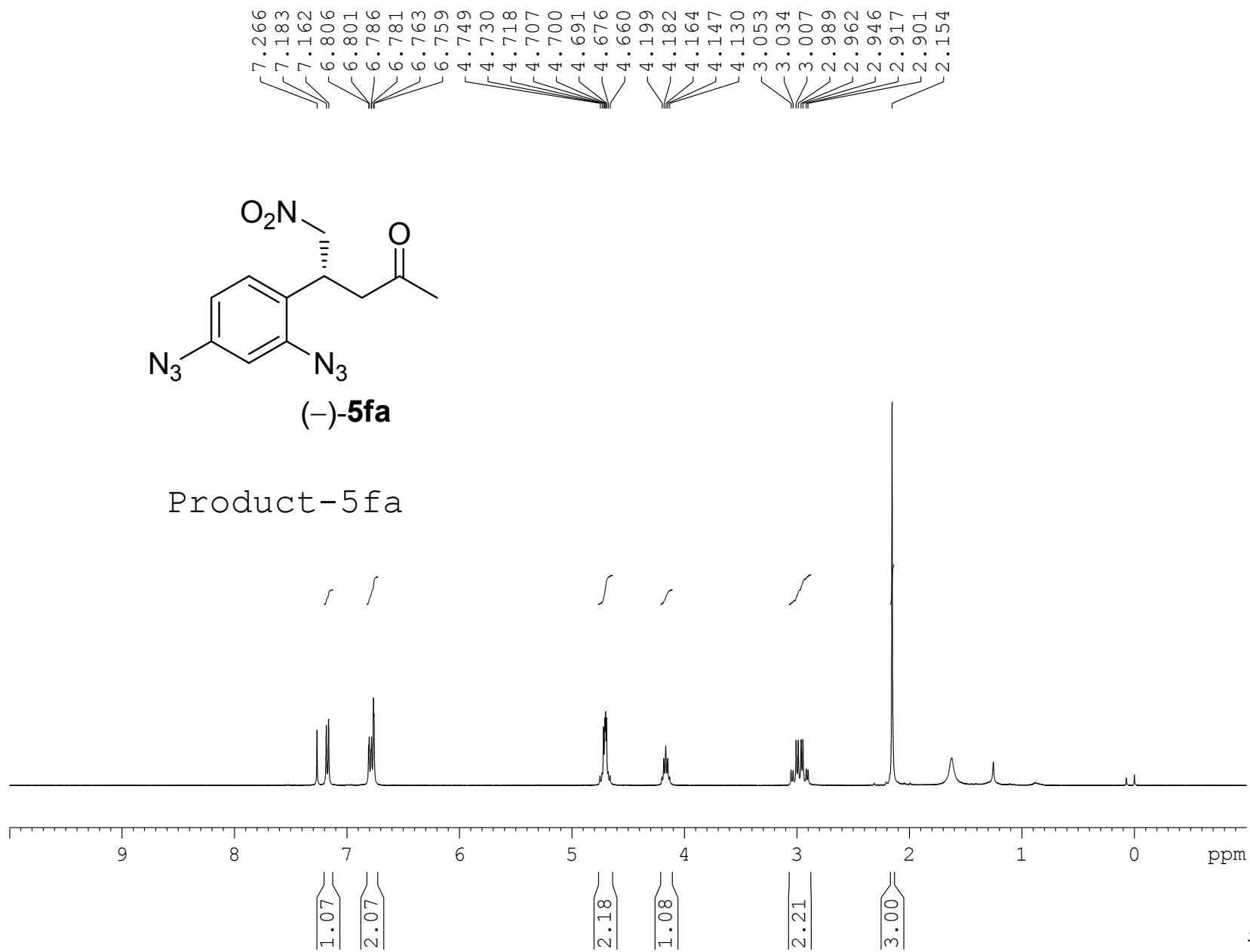


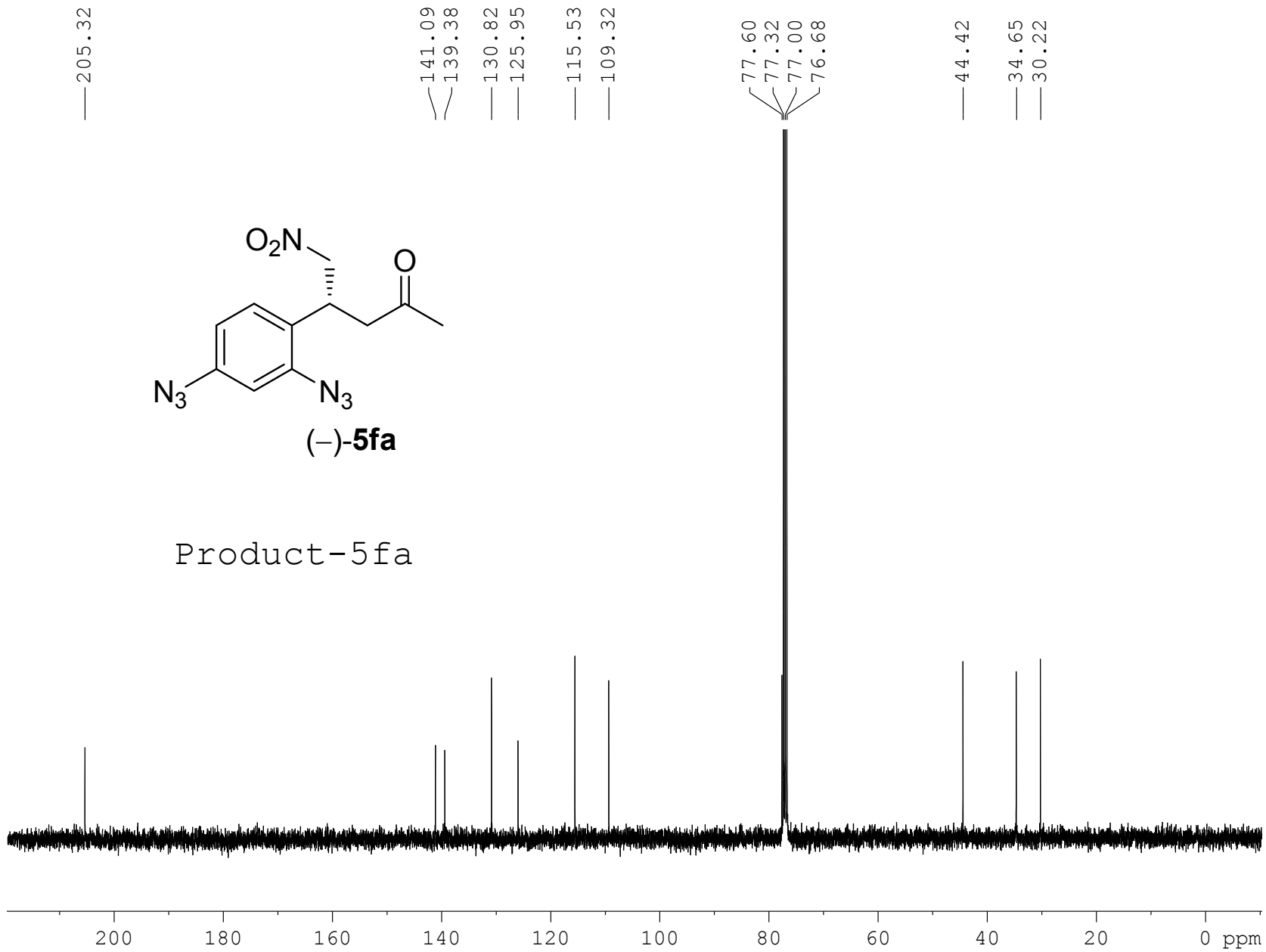
Product-5ea

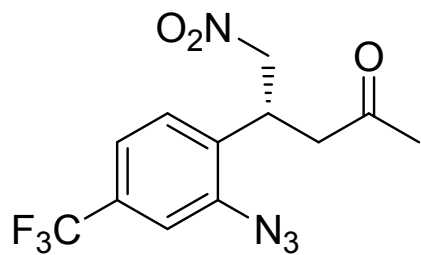




Product-5fa

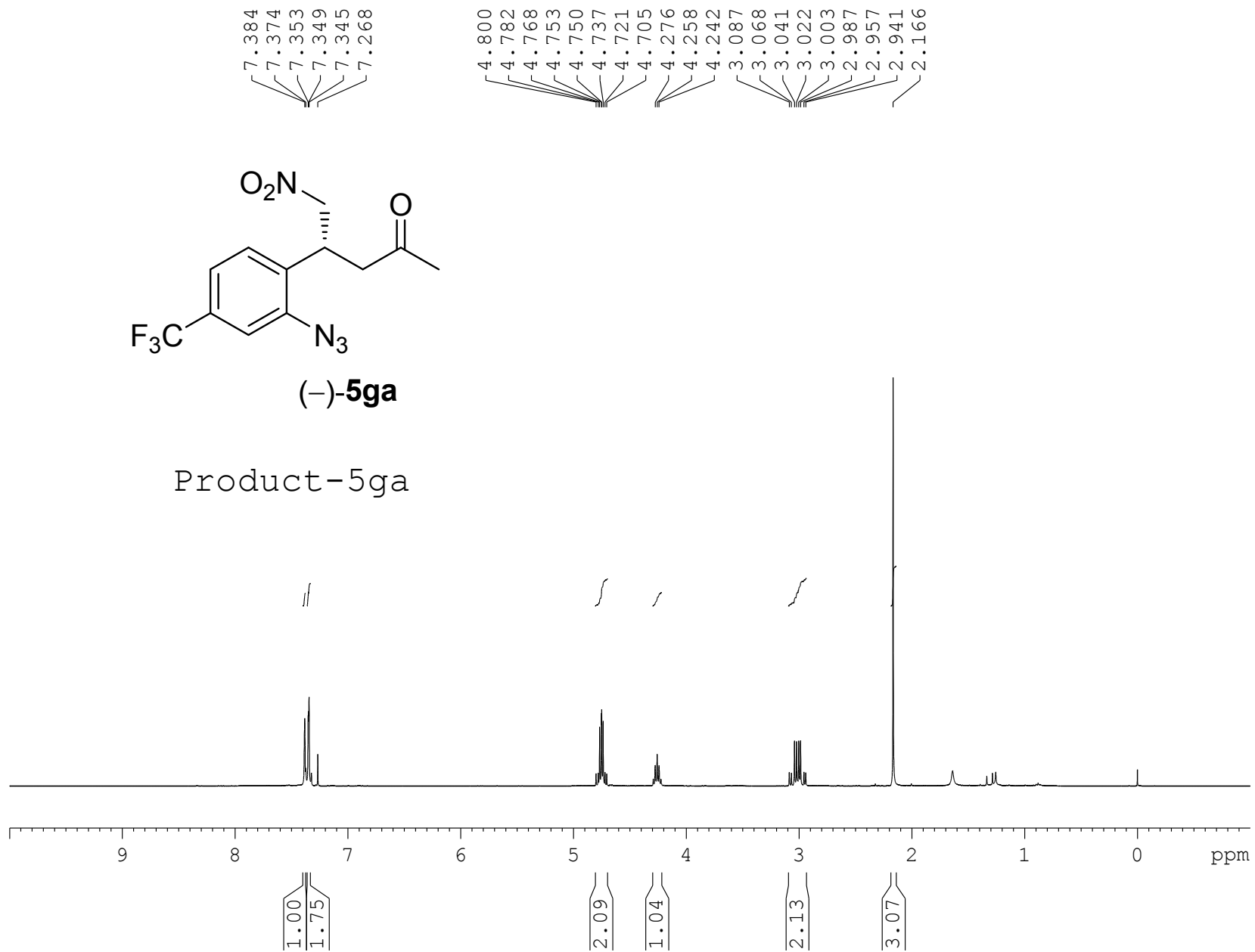


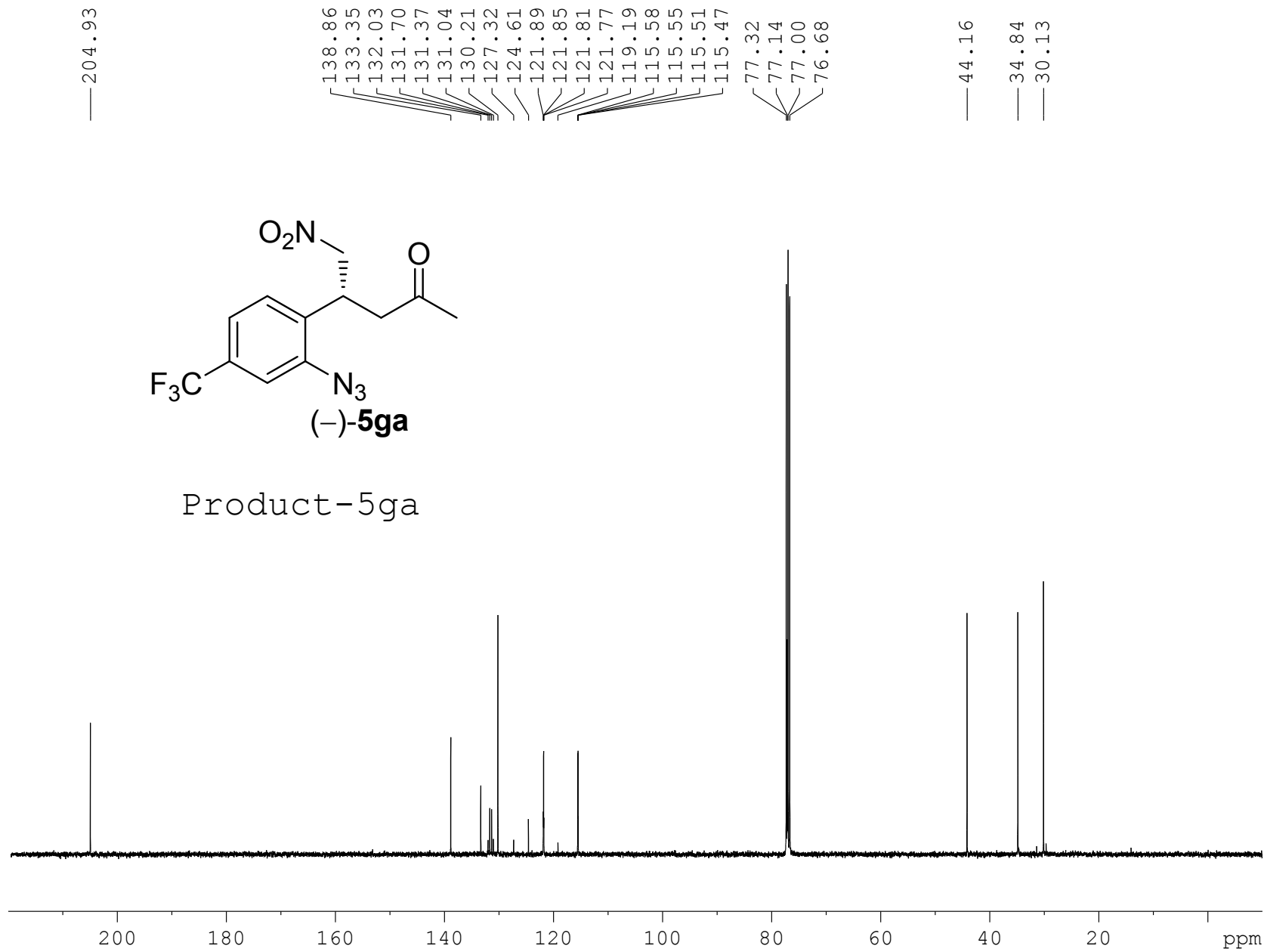


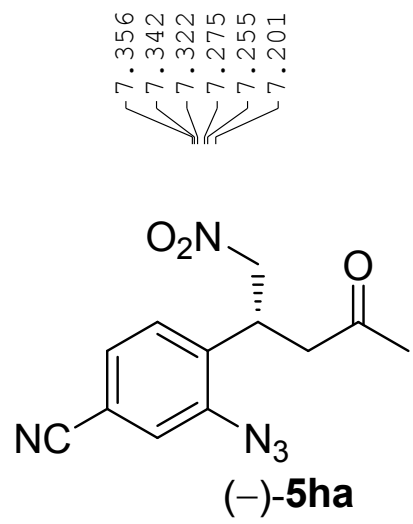


**(-)-5ga**

Product-5ga



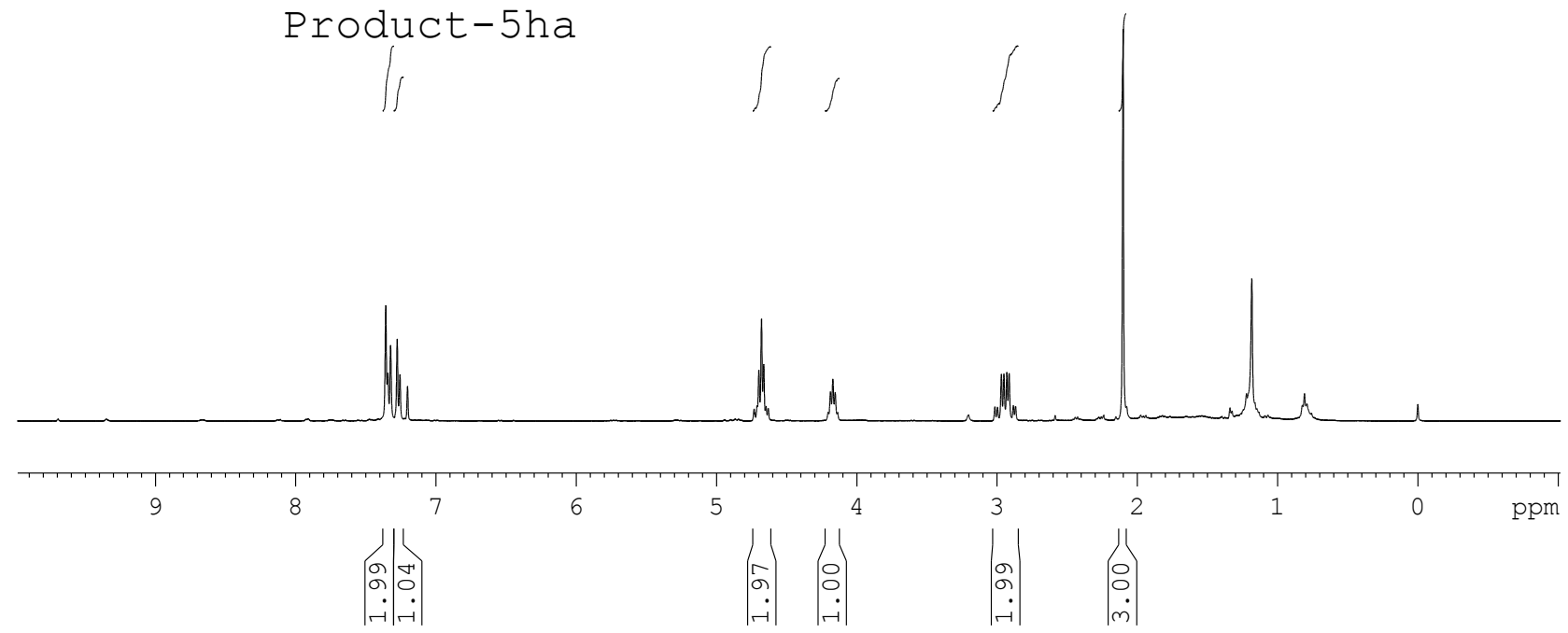


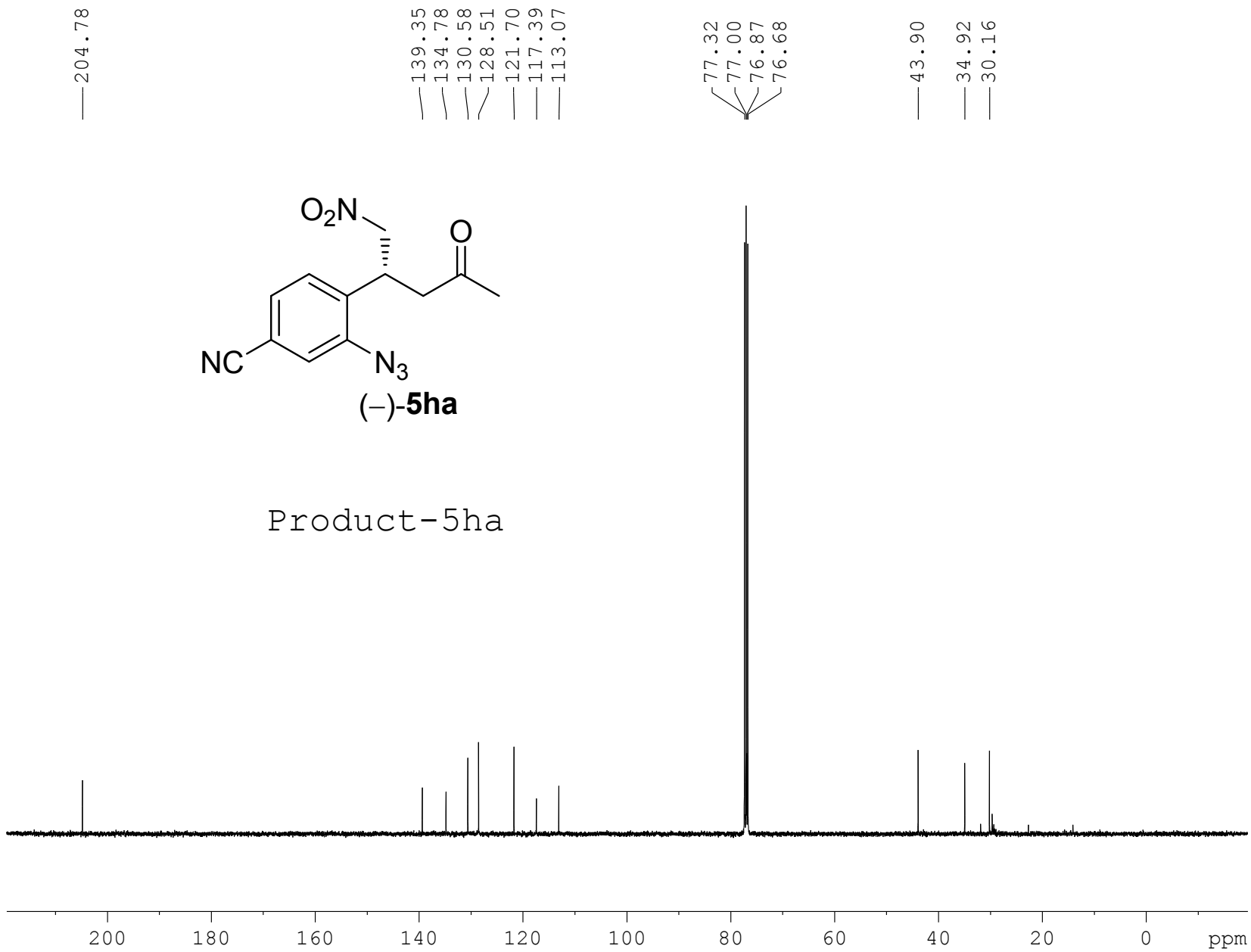


7.356  
 7.342  
 7.322  
 7.275  
 7.255  
 7.201

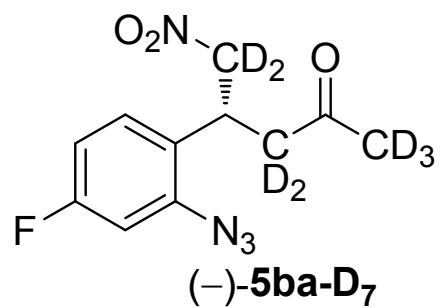
4.730  
 4.711  
 4.698  
 4.679  
 4.663  
 4.647  
 4.631  
 4.188  
 4.171  
 4.154  
 3.015  
 2.997  
 2.969  
 2.951  
 2.930  
 2.914  
 2.884  
 2.868  
 2.102

Product-5ha

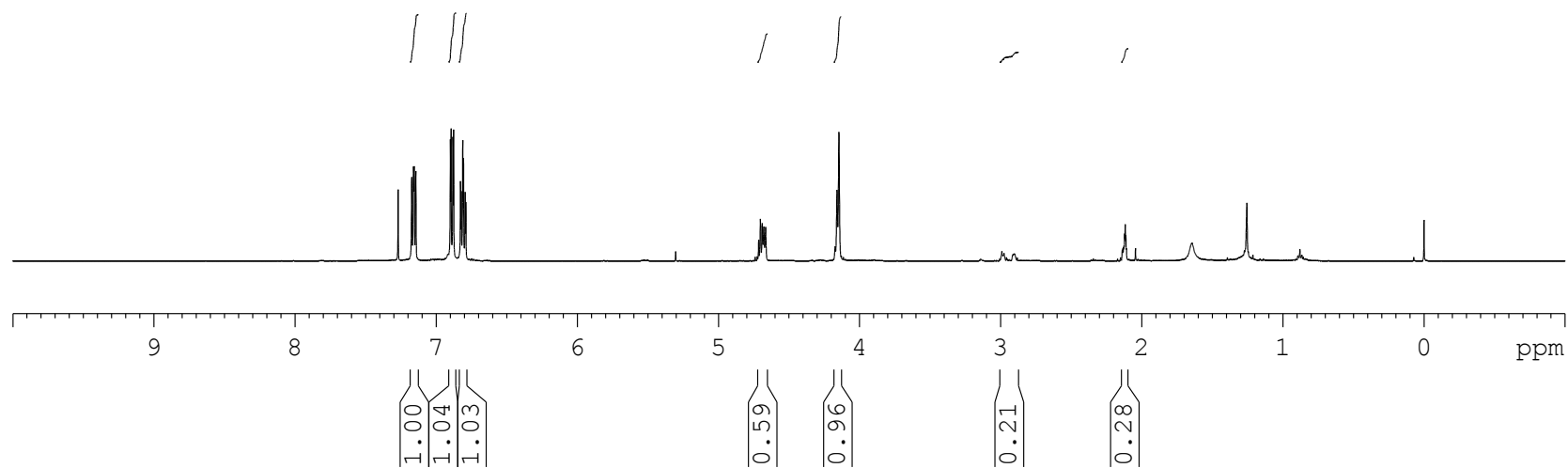


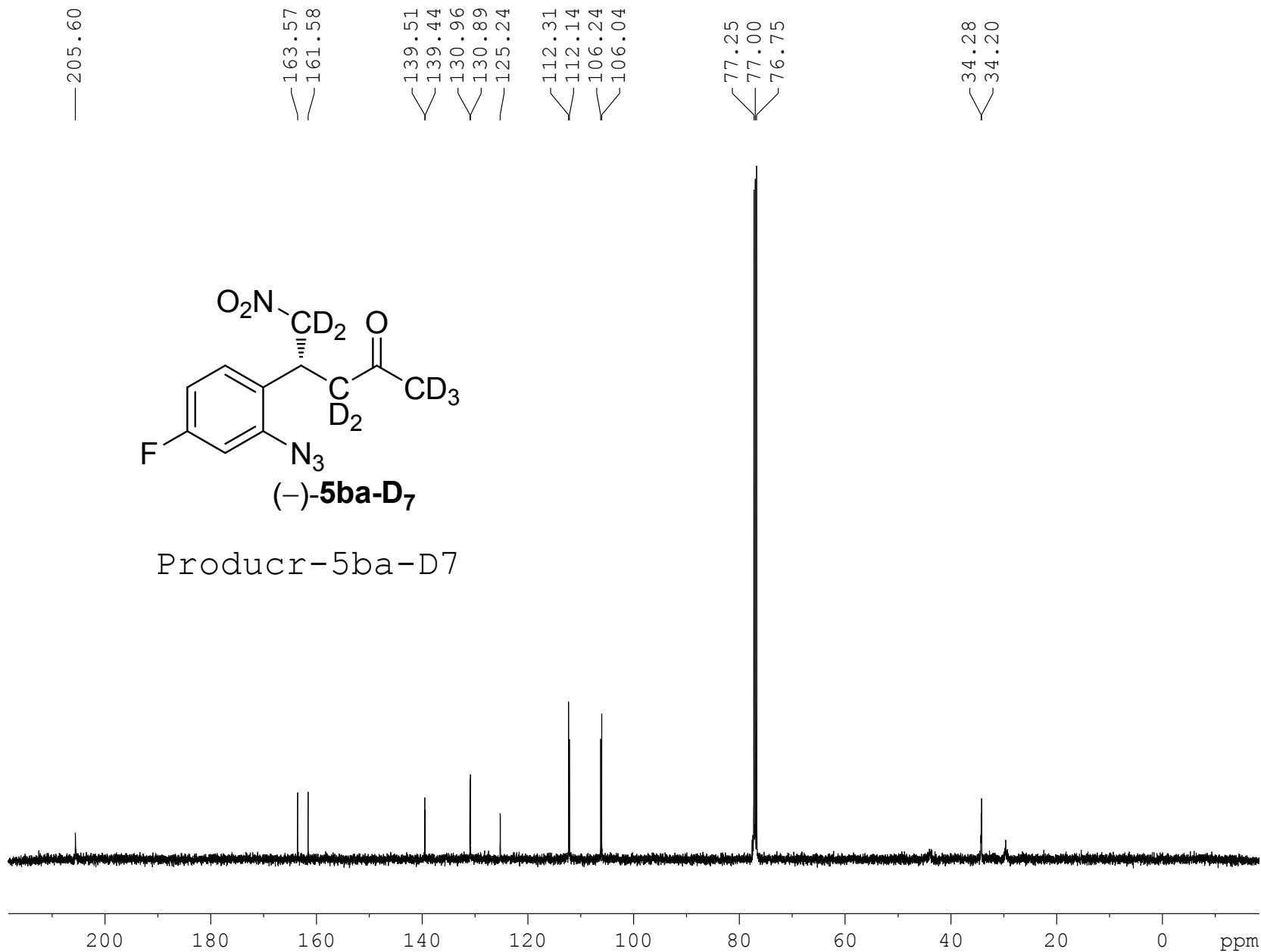




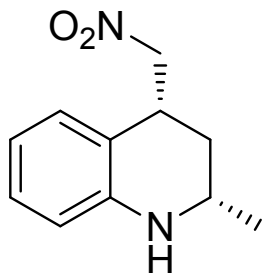


Product-5ba-D7



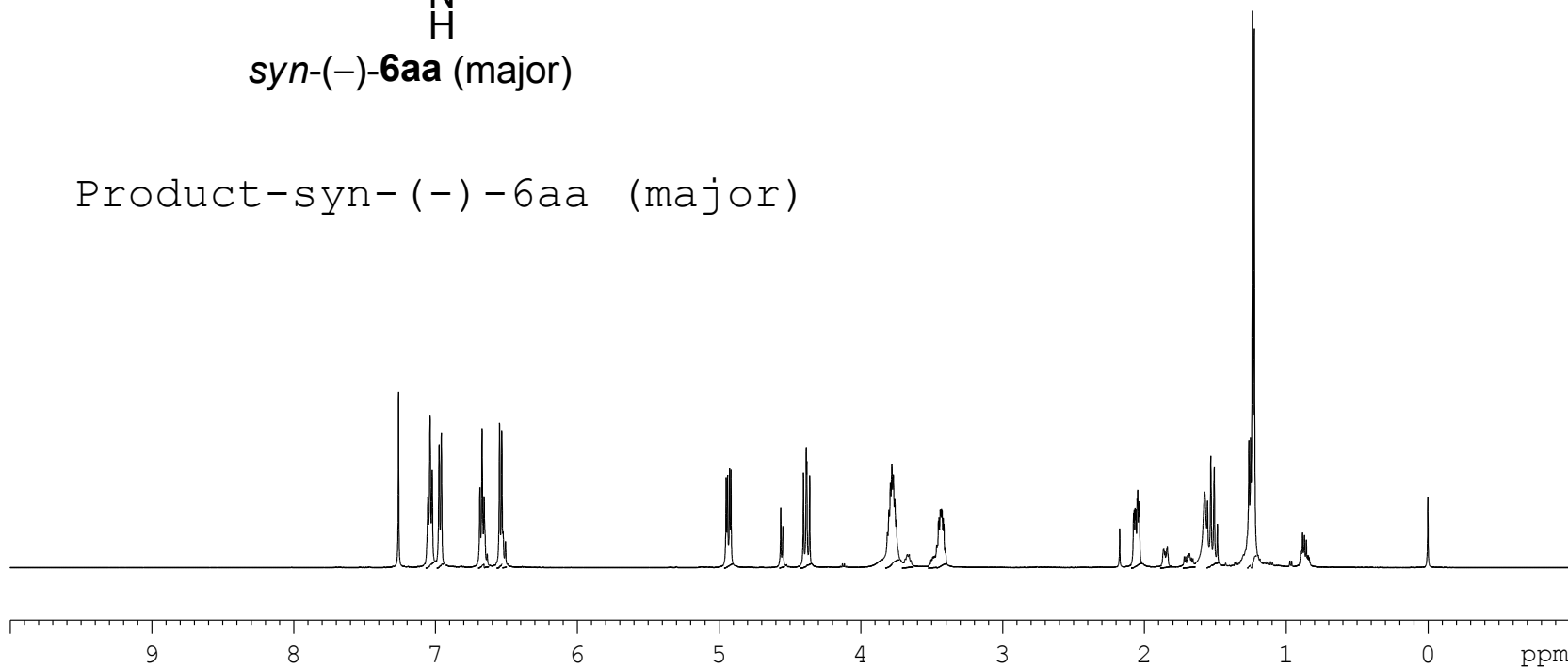


7.259  
7.052  
7.037  
7.022  
6.973  
6.958  
6.685  
6.671  
6.656  
6.547  
6.531  
6.522  
4.949  
4.939  
4.925  
4.915  
4.564  
4.549  
4.404  
4.384  
4.380  
4.360  
3.812  
3.801  
3.790  
3.780  
3.770  
3.760  
3.748  
3.452  
3.447  
3.439  
3.434  
3.430  
3.425  
3.418  
3.413  
2.076  
2.071  
2.064  
2.059  
2.050  
2.046  
2.039  
2.034  
1.574  
1.554  
1.531  
1.506  
1.484  
1.262  
1.250  
1.237  
1.224



*syn*-(-)-**6aa** (major)

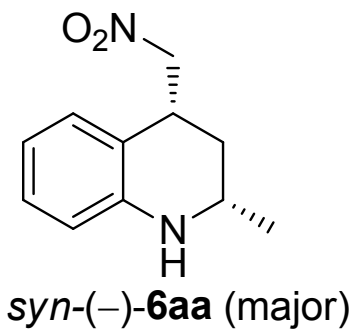
Product-*syn*-(-)-**6aa** (major)



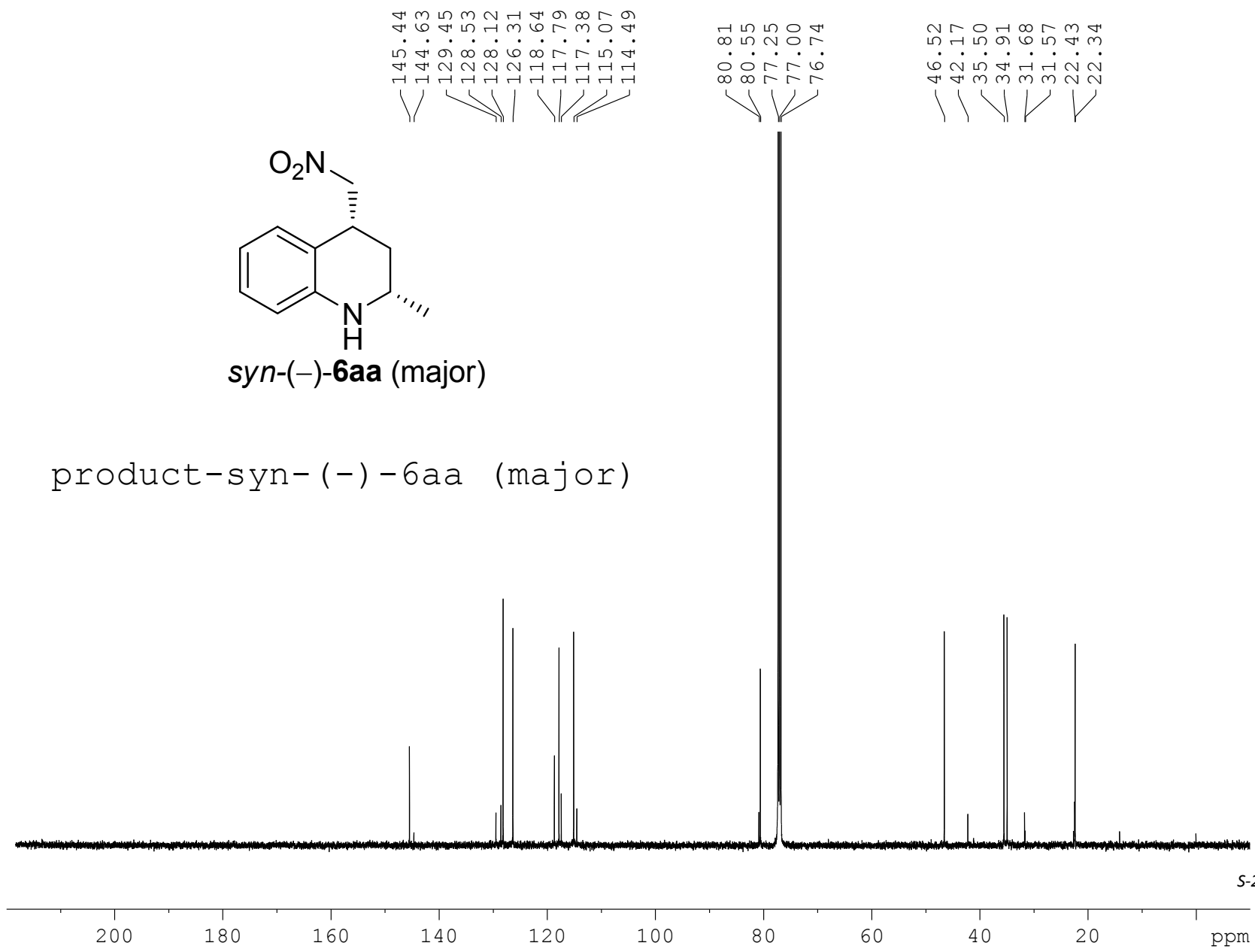
1.31  
0.99  
1.05  
0.28  
0.97  
0.23

1.01  
0.31  
1.02  
1.98  
0.25  
0.29  
1.04

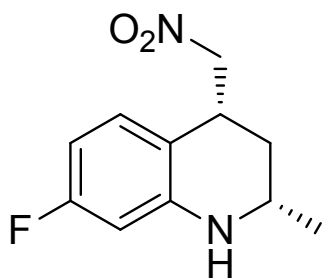
1.12  
0.29  
0.27  
1.28  
0.81  
2.99



product-*syn*-(-)-**6aa** (major)

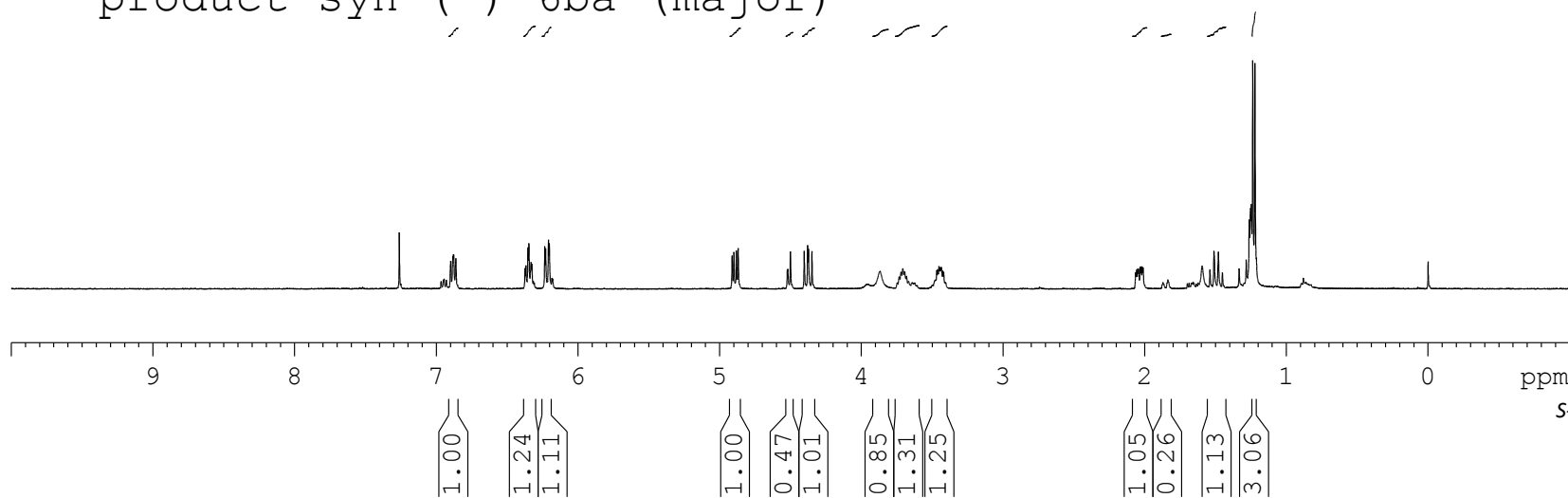


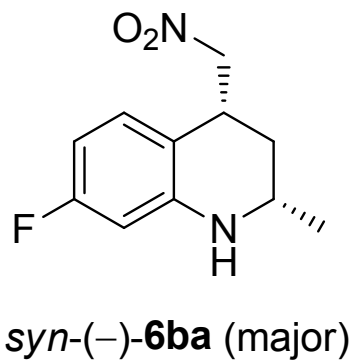
7.262  
6.899  
6.884  
6.880  
6.878  
6.863  
6.375  
6.369  
6.354  
6.348  
6.333  
6.327  
6.236  
6.229  
6.210  
6.203  
4.913  
4.901  
4.883  
4.870  
4.523  
4.519  
4.501  
4.404  
4.380  
4.374  
4.350  
3.708  
3.469  
3.462  
3.453  
3.447  
3.442  
3.435  
3.426  
2.058  
2.050  
2.044  
2.033  
2.026  
2.019  
2.012  
1.595  
1.540  
1.512  
1.480  
1.334  
1.284  
1.263  
1.254  
1.248  
1.238  
1.223  
1.212



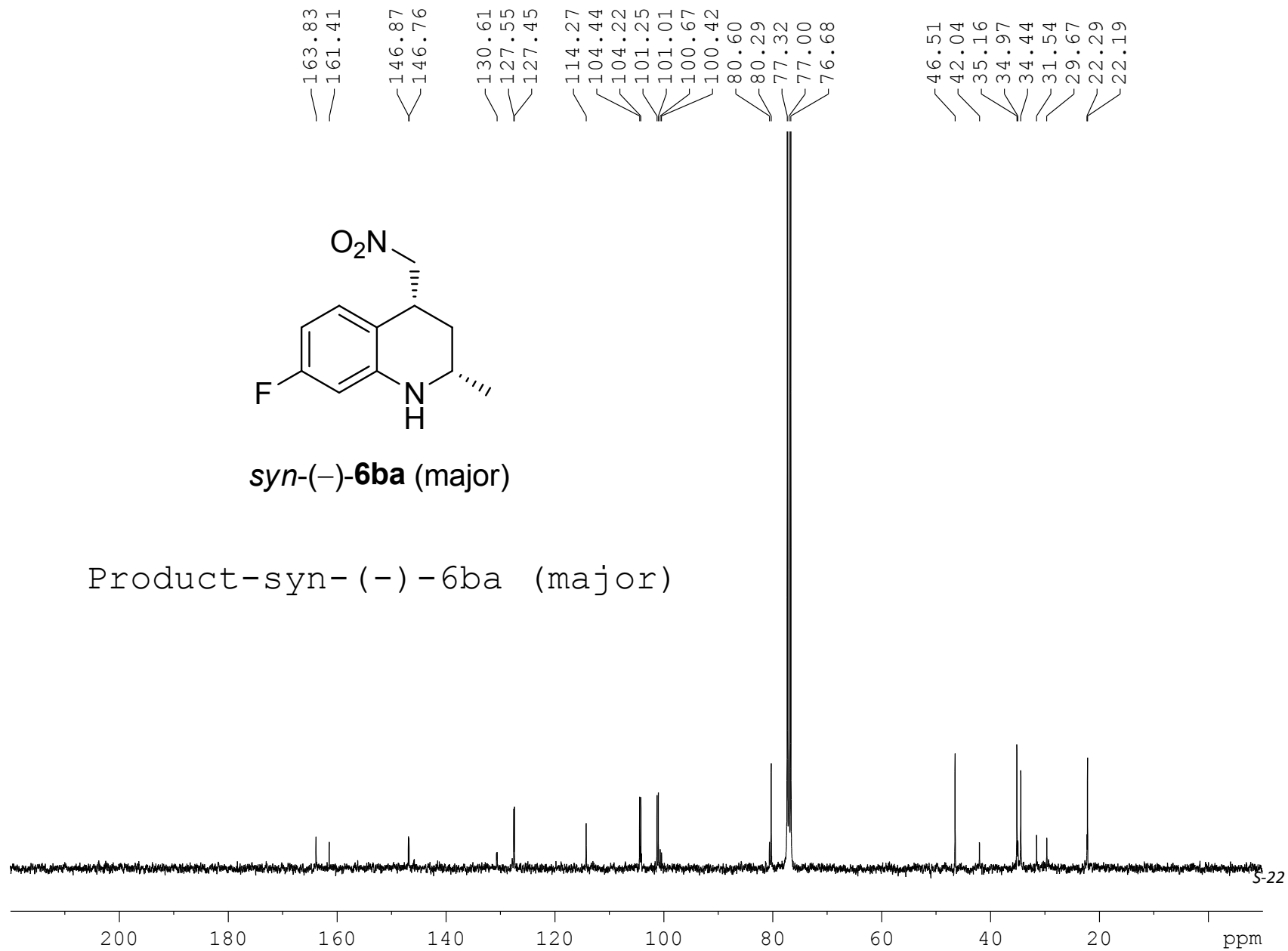
*syn*-(-)-**6ba** (major)

product-*syn*-(-)-**6ba** (major)

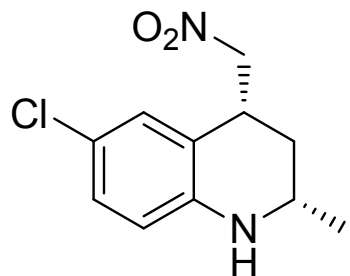




Product-*syn*-(-)-**6ba** (major)

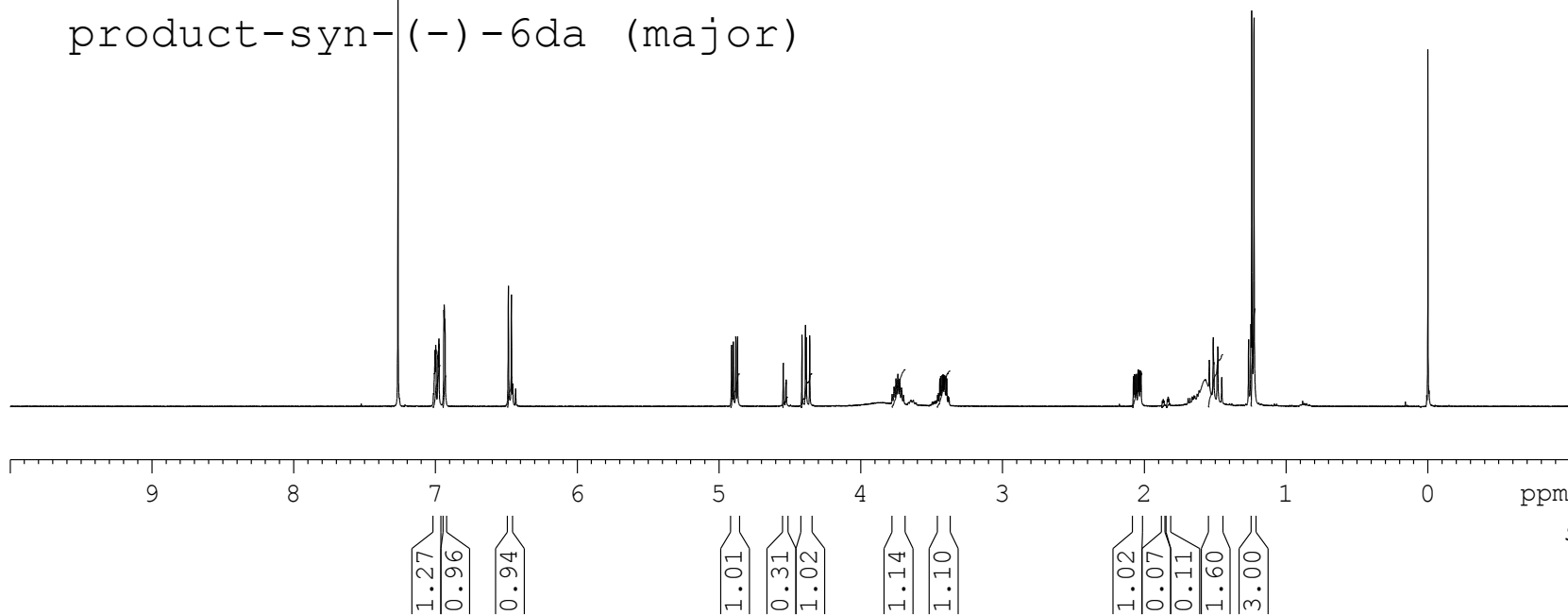


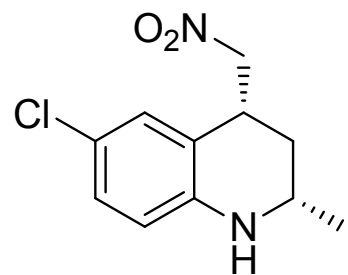
7.263  
7.006  
7.002  
7.000  
6.996  
6.994  
6.981  
6.979  
6.975  
6.973  
6.939  
6.936  
6.933  
6.931  
6.484  
6.463  
4.910  
4.898  
4.879  
4.867  
4.545  
4.413  
4.388  
4.383  
4.358  
3.750  
3.737  
3.724  
3.441  
3.434  
3.425  
3.419  
3.413  
3.407  
3.398  
3.391  
2.076  
2.070  
2.062  
2.055  
2.044  
2.038  
2.029  
2.023  
1.542  
1.514  
1.510  
1.486  
1.482  
1.454  
1.264  
1.249  
1.242  
1.226



*syn*-(-)-**6da** (major)

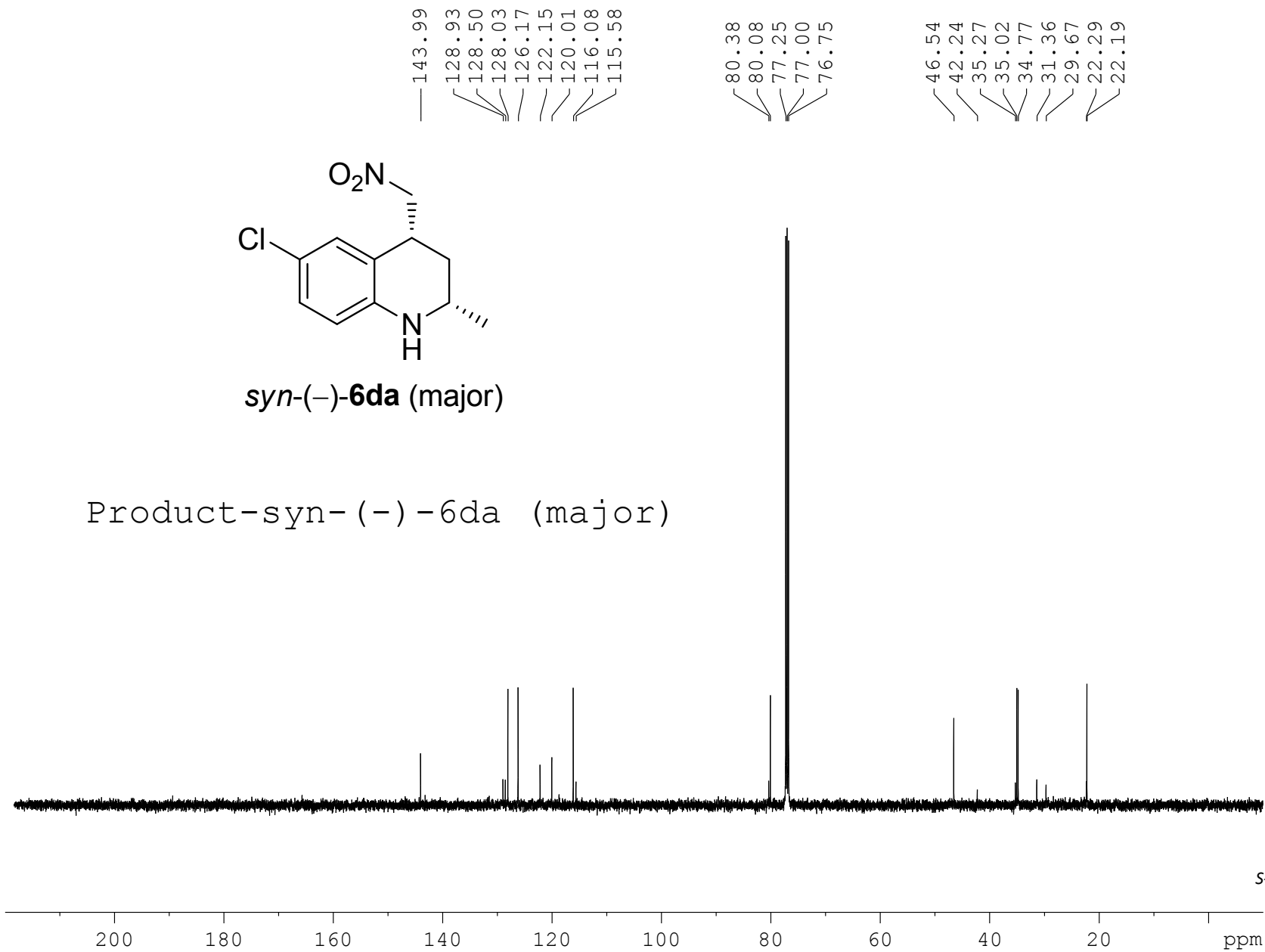
product-*syn*-(-)-**6da** (major)





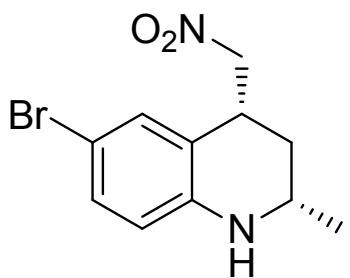
*syn*-(-)-**6da** (major)

Product-*syn*-(-)-6da (major)



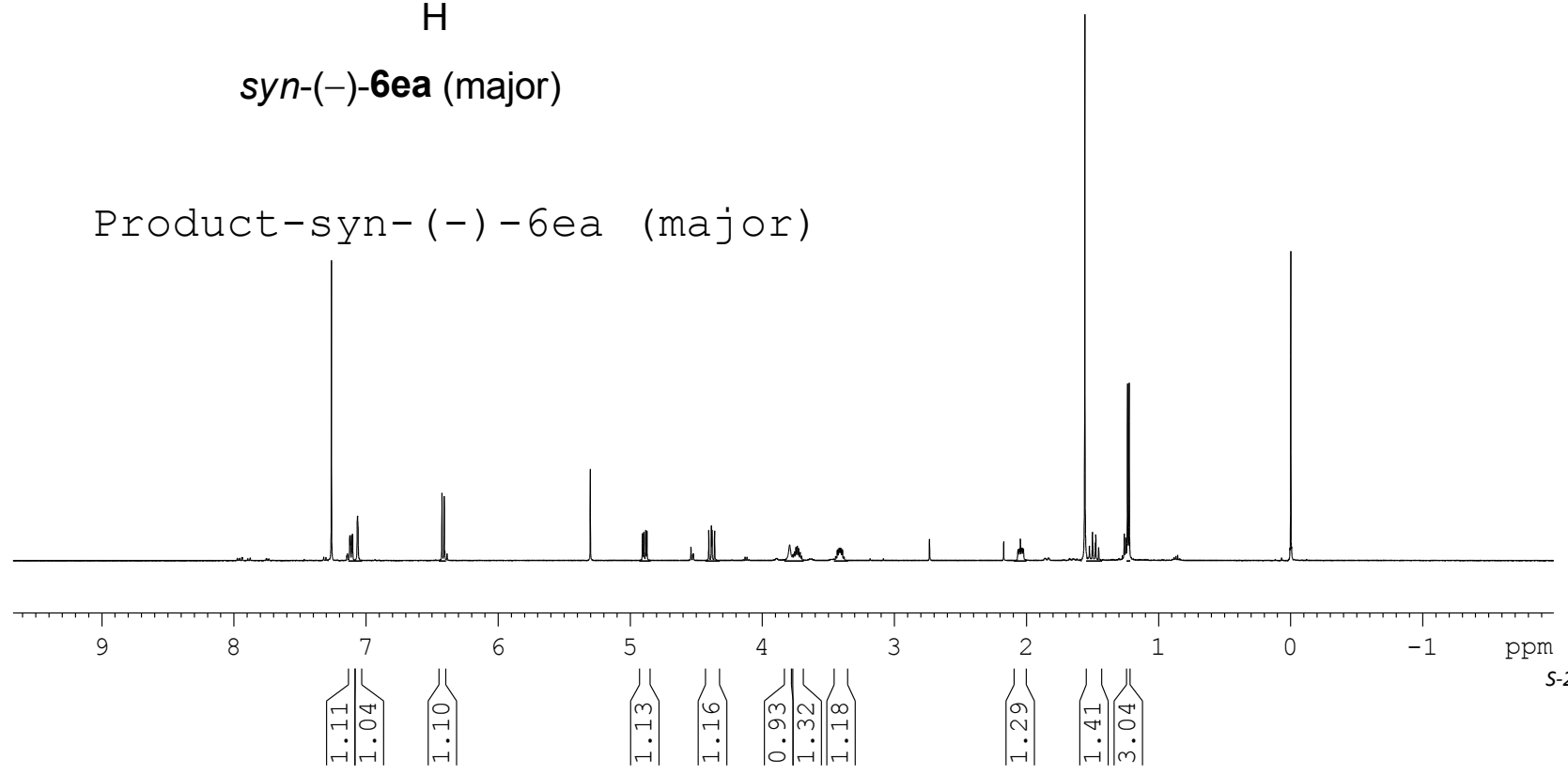


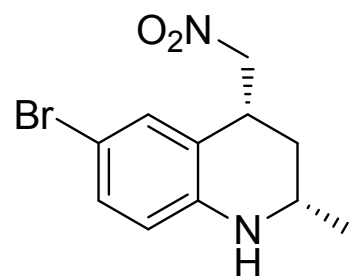
7.262  
7.122  
7.119  
7.105  
7.102  
7.065  
7.064  
7.062  
6.425  
6.407  
4.906  
4.897  
4.882  
4.873  
4.539  
4.404  
4.384  
4.380  
4.360  
3.792  
3.768  
3.757  
3.747  
3.736  
3.726  
3.715  
3.433  
3.428  
3.421  
3.416  
3.412  
3.406  
3.399  
3.394  
2.066  
2.061  
2.054  
2.047  
2.040  
2.035  
2.029  
2.024  
1.524  
1.502  
1.499  
1.480  
1.476  
1.454  
1.261  
1.249  
1.236  
1.223



*syn*-(-)-**6ea** (major)

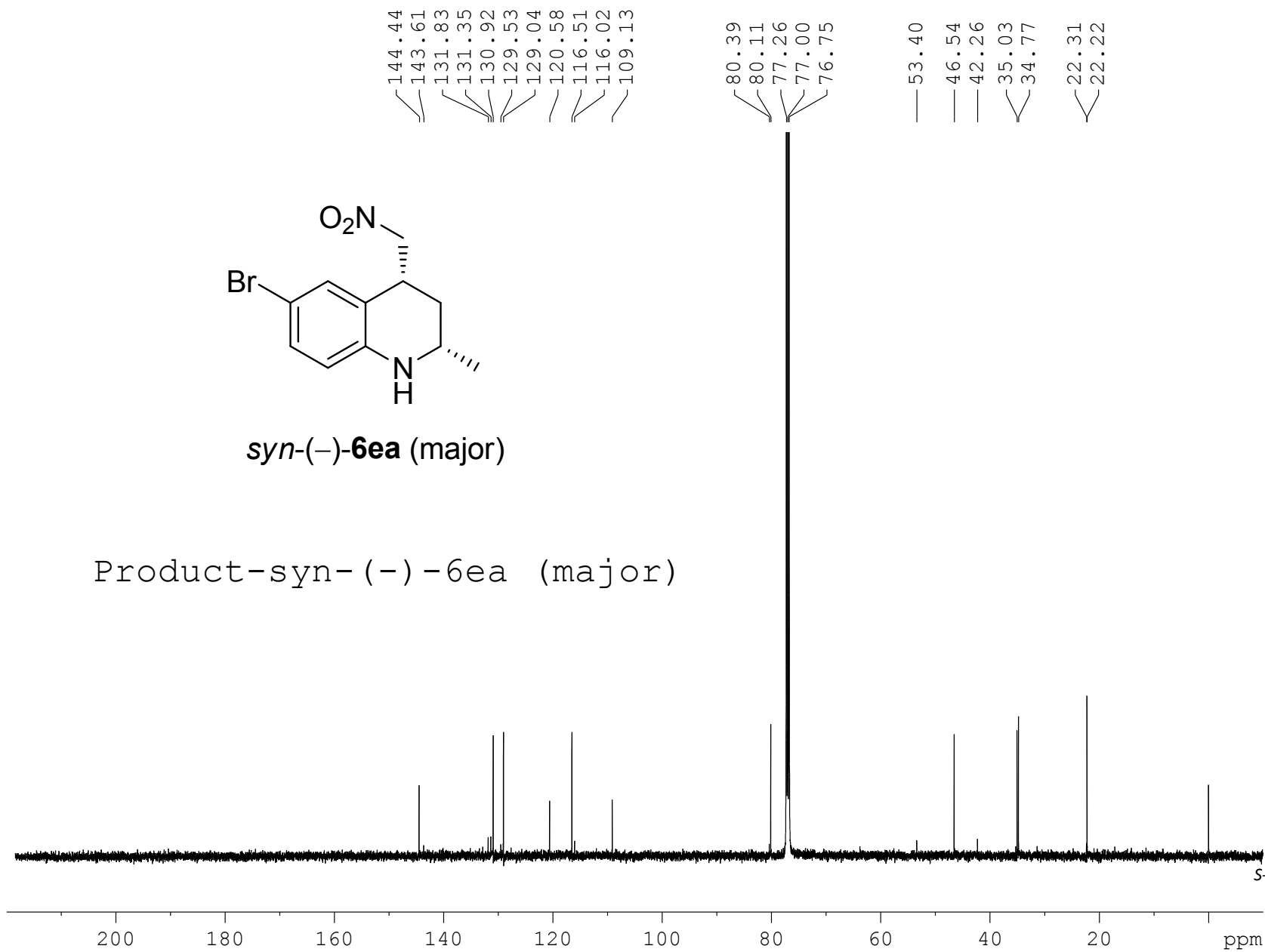
Product-*syn*-(-)-**6ea** (major)



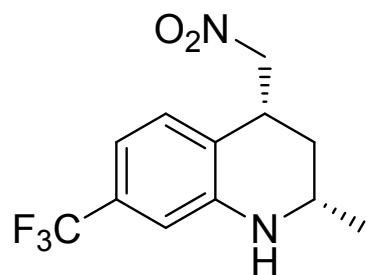


*syn*-(-)-**6ea** (major)

Product-*syn*-(-)-**6ea** (major)

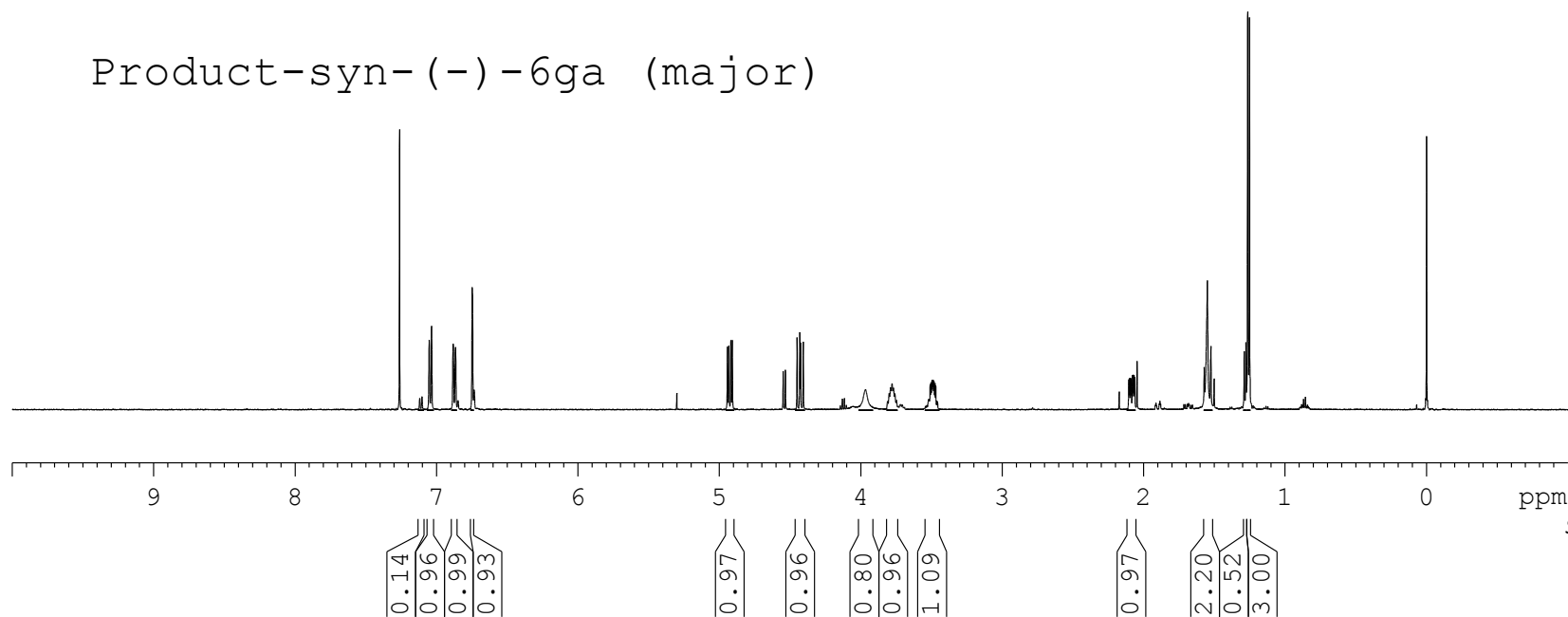


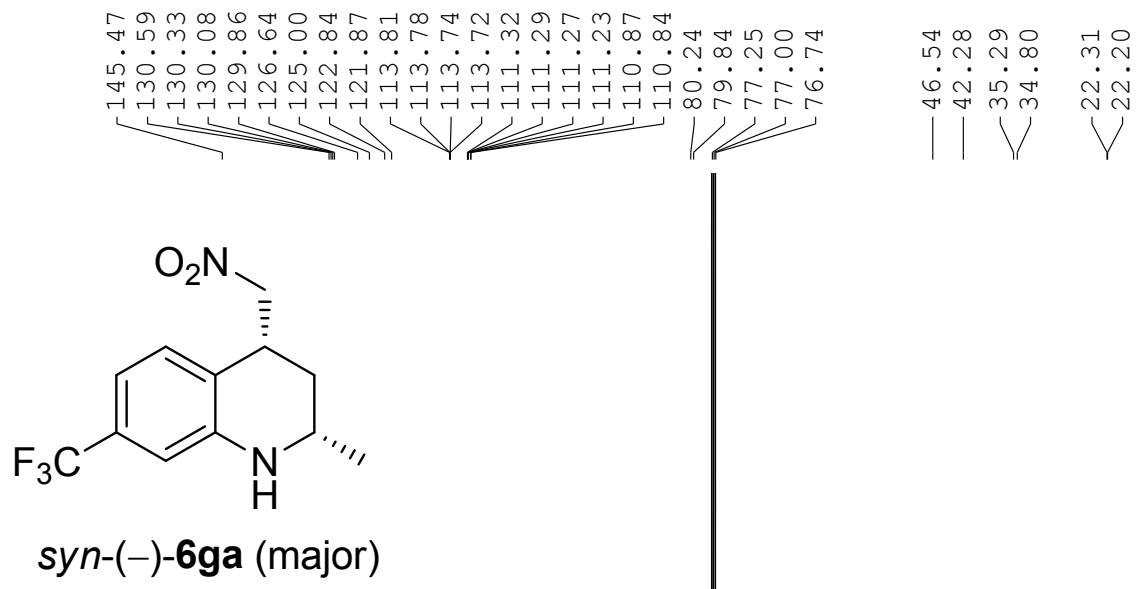
7.261  
7.118  
7.102  
7.051  
7.035  
6.882  
6.865  
6.848  
6.747  
6.734  
4.942  
4.932  
4.918  
4.908  
4.548  
4.532  
4.449  
4.430  
4.425  
4.406  
3.966  
3.799  
3.788  
3.778  
3.768  
3.758  
3.747  
3.521  
3.516  
3.509  
3.503  
3.496  
3.490  
3.487  
3.482  
3.474  
3.469  
2.104  
2.099  
2.092  
2.087  
2.078  
2.073  
2.067  
2.062  
1.884  
1.571  
1.549  
1.523  
1.500  
1.288  
1.276  
1.263  
1.251



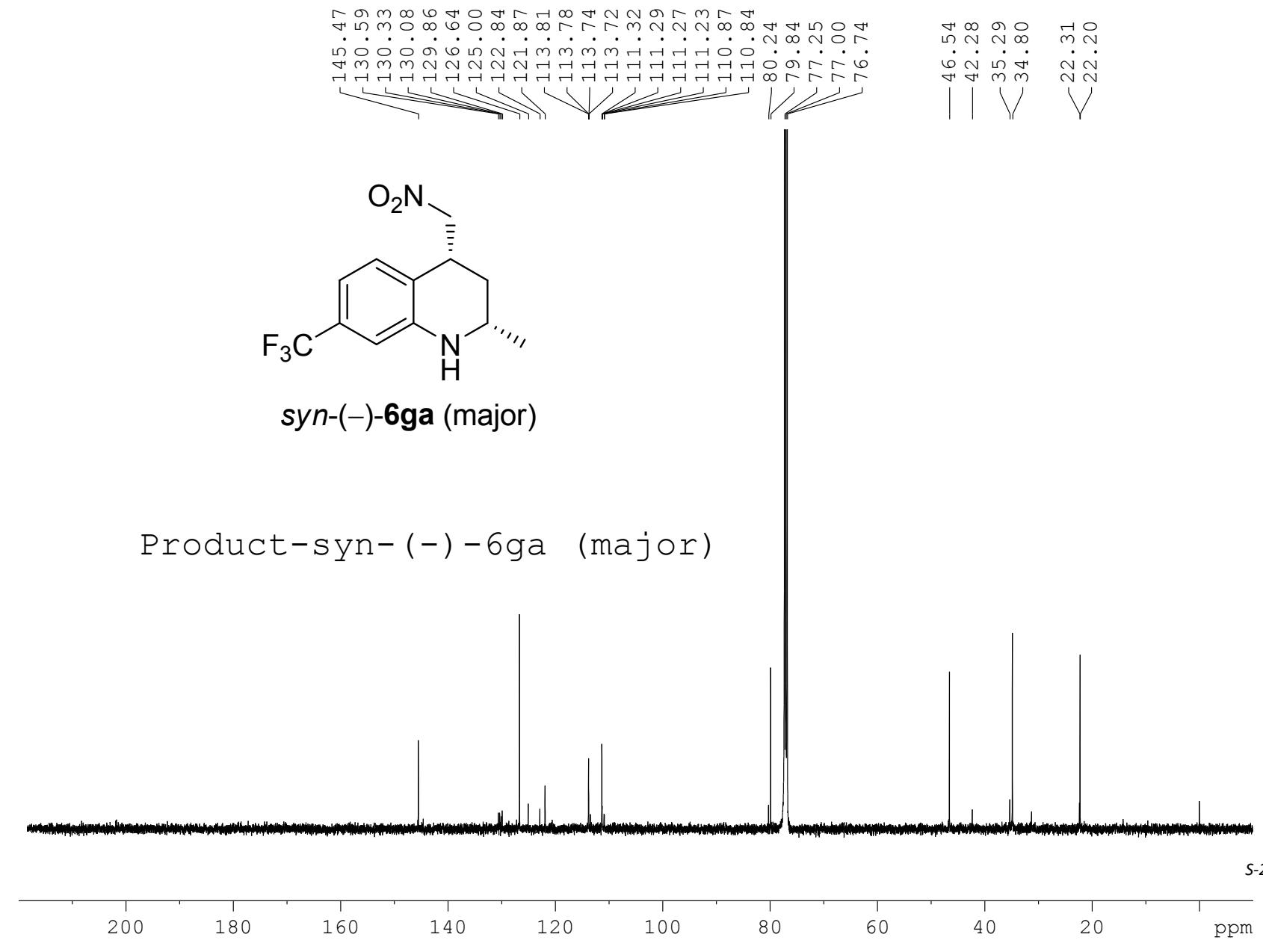
*syn*-(-)-**6ga** (major)

Product-*syn*-(-)-**6ga** (major)

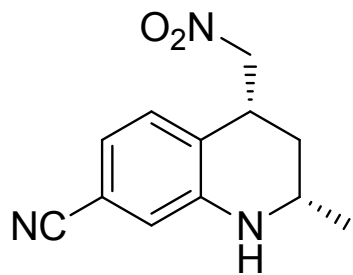




Product-*syn*-(-)-**6ga** (major)

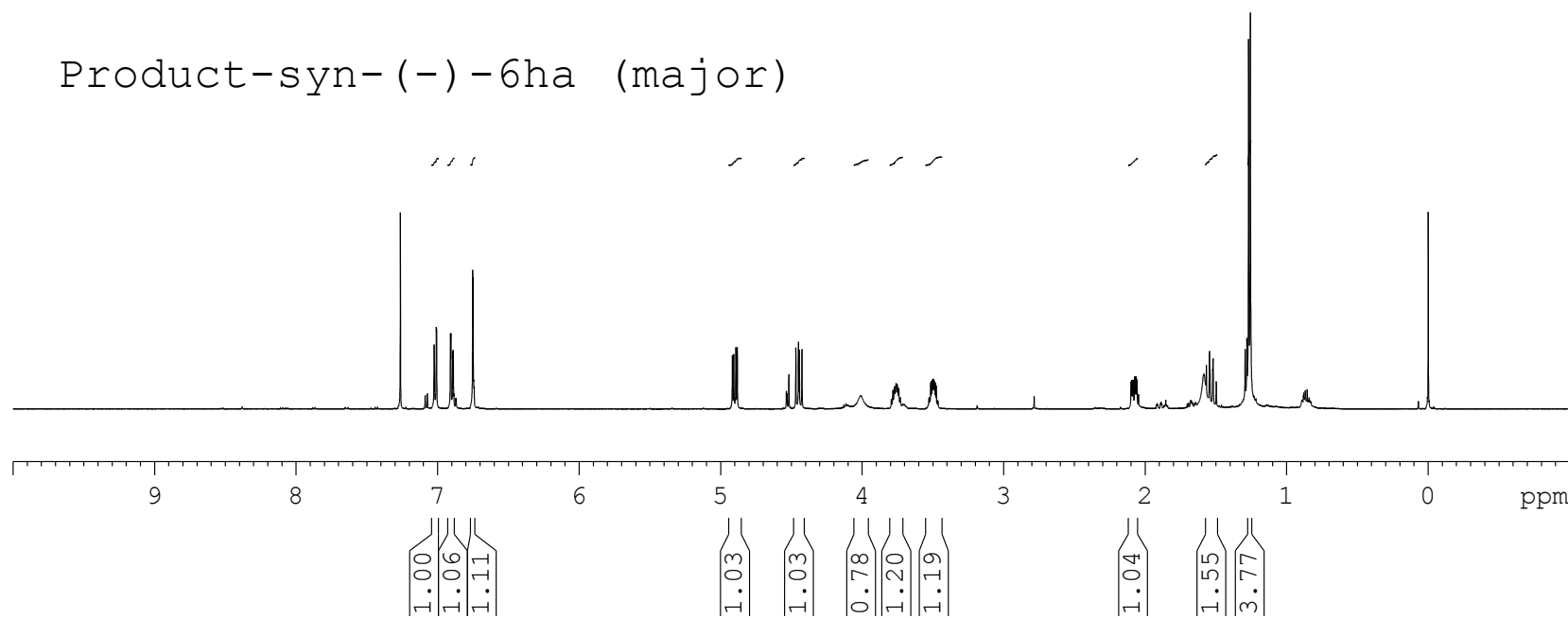


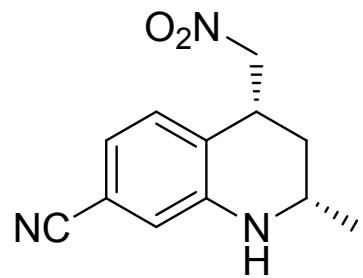
7.264  
7.026  
7.024  
7.010  
7.008  
6.910  
6.907  
6.894  
6.891  
6.753  
6.750  
6.746  
6.743  
4.918  
4.908  
4.893  
4.883  
4.519  
4.469  
4.451  
4.444  
4.426  
3.772  
3.761  
3.753  
3.743  
3.517  
3.511  
3.504  
3.499  
3.495  
3.489  
3.482  
3.477  
2.101  
2.095  
2.089  
2.084  
2.075  
2.070  
2.064  
2.058  
1.586  
1.569  
1.546  
1.543  
1.524  
1.521  
1.498  
1.294  
1.282  
1.270  
1.257



**syn-(-)-6ha (major)**

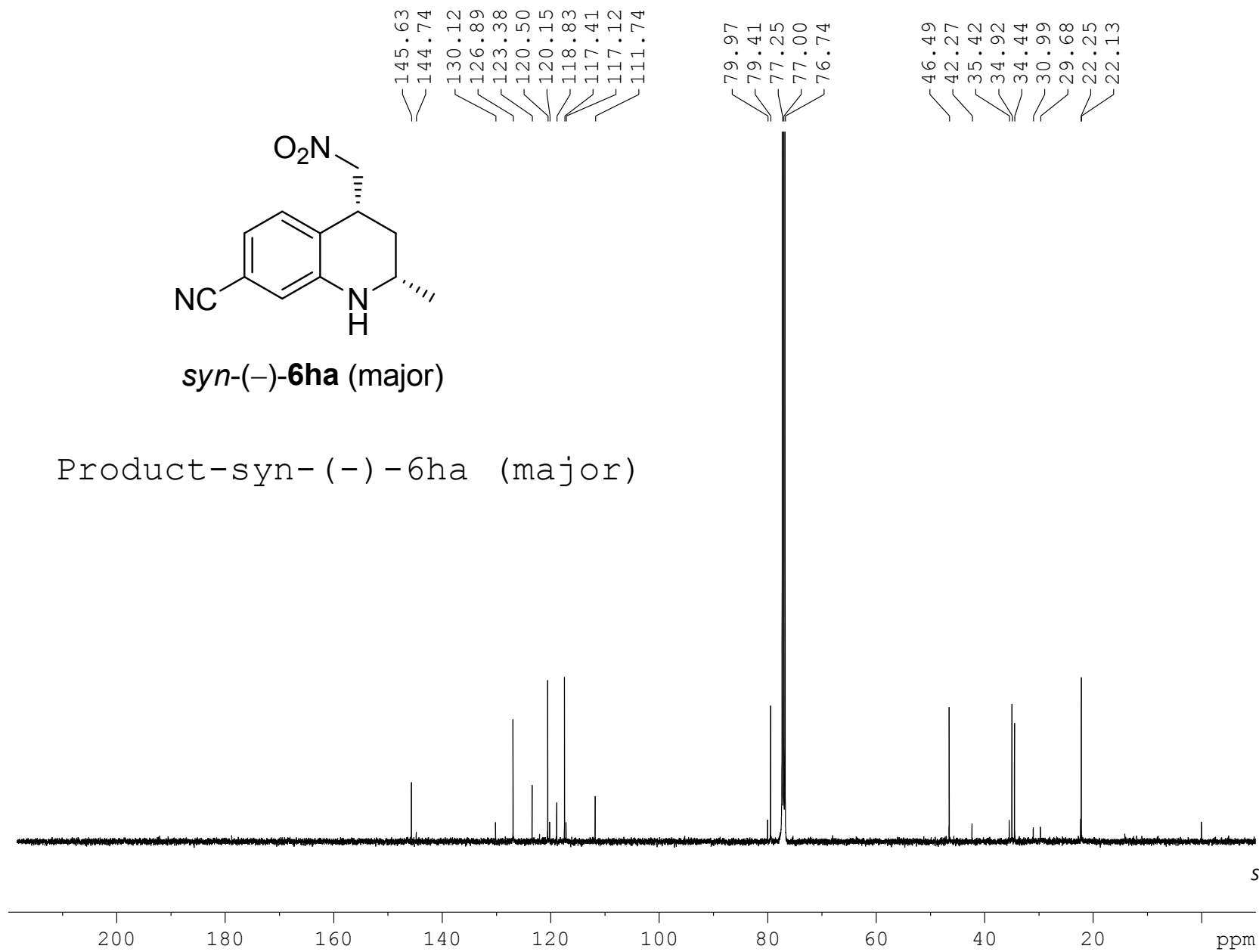
Product-syn-(-)-6ha (major)



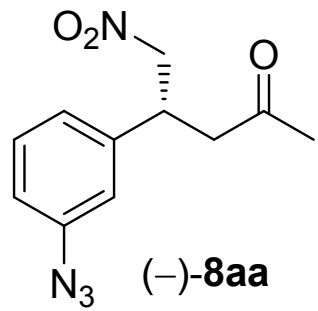


*syn*-(-)-**6ha** (major)

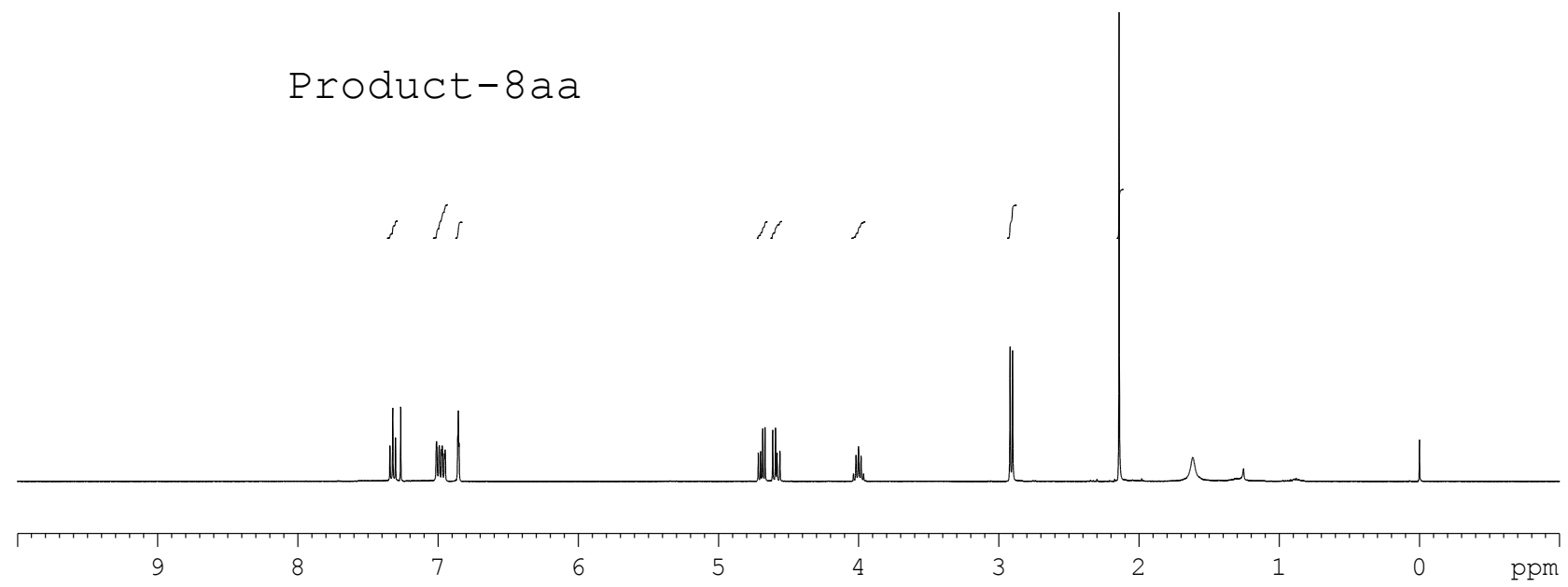
Product-*syn*-(-)-6ha (major)



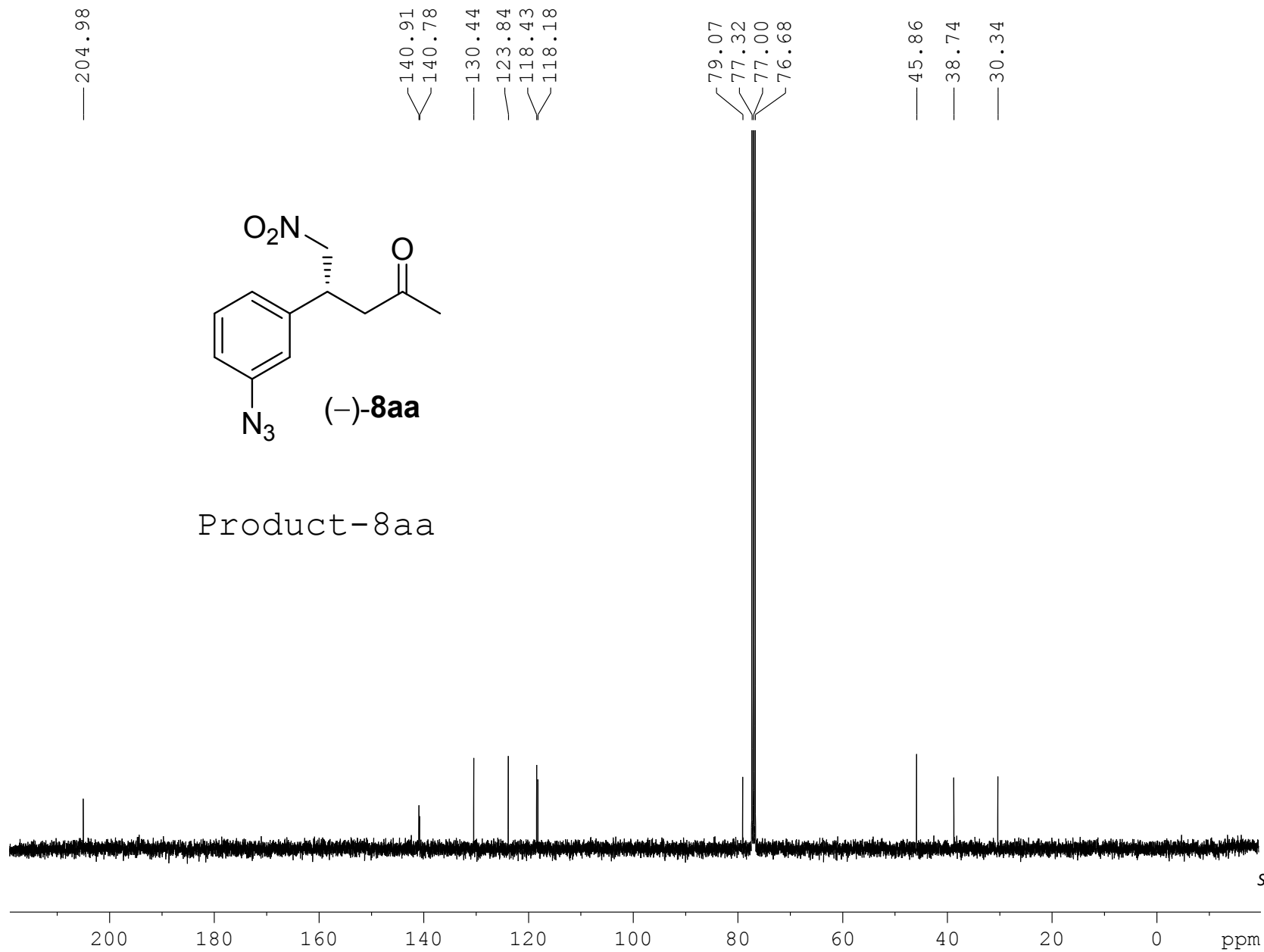
7.341  
7.322  
7.302  
7.265  
7.010  
6.990  
6.974  
6.972  
6.968  
6.954  
6.952  
6.948  
6.858  
6.854  
6.849  
4.716  
4.699  
4.684  
4.668  
4.613  
4.593  
4.582  
4.562  
4.037  
4.019  
4.001  
3.983  
3.965  
2.920  
2.902  
— 2.142



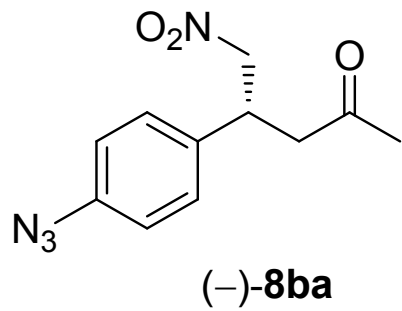
Product-8aa



1.05  
2.01  
0.96  
1.00  
1.01  
0.99  
1.99  
2.95







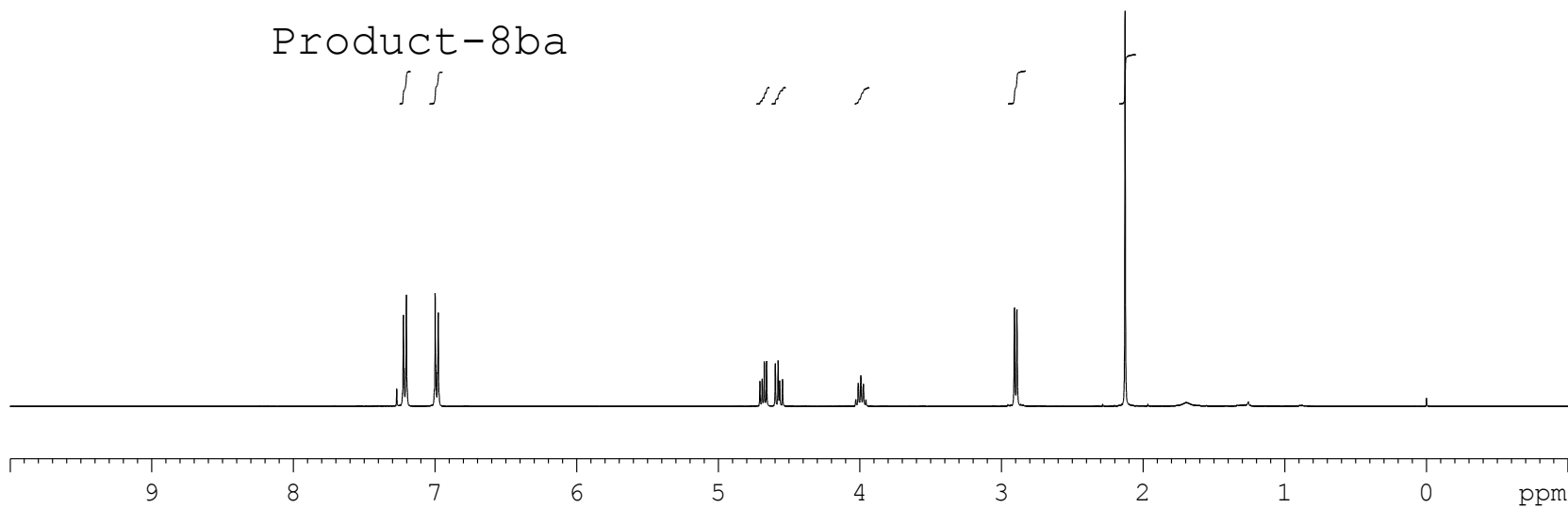
7.269  
 7.228  
 7.222  
 7.205  
 7.201  
 7.003  
 6.997  
 6.993  
 6.981  
 6.976

4.705  
 4.688  
 4.674  
 4.657  
 4.596  
 4.576  
 4.565  
 4.545  
 4.010  
 3.992  
 3.973

2.907  
 2.889

2.126

Product-8ba



1.98  
1.95

1.00  
1.00

0.98

2.00

3.00

— 205.13

— 139.63

— 135.39

— 128.82

— 119.58

79.29

77.32

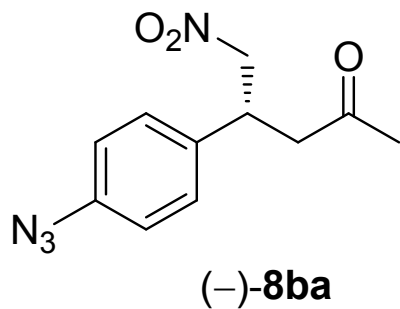
77.00

76.68

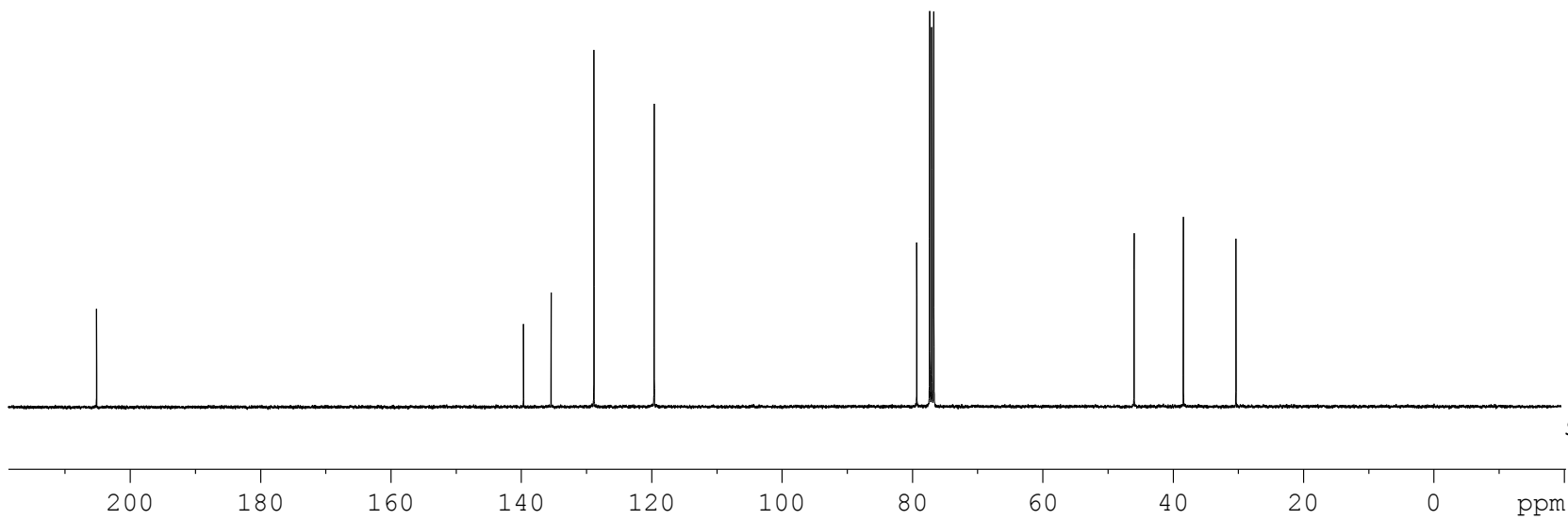
— 45.96

— 38.39

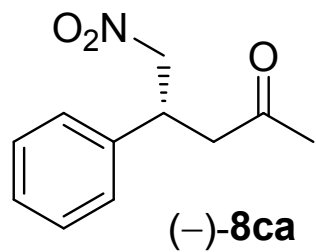
— 30.33



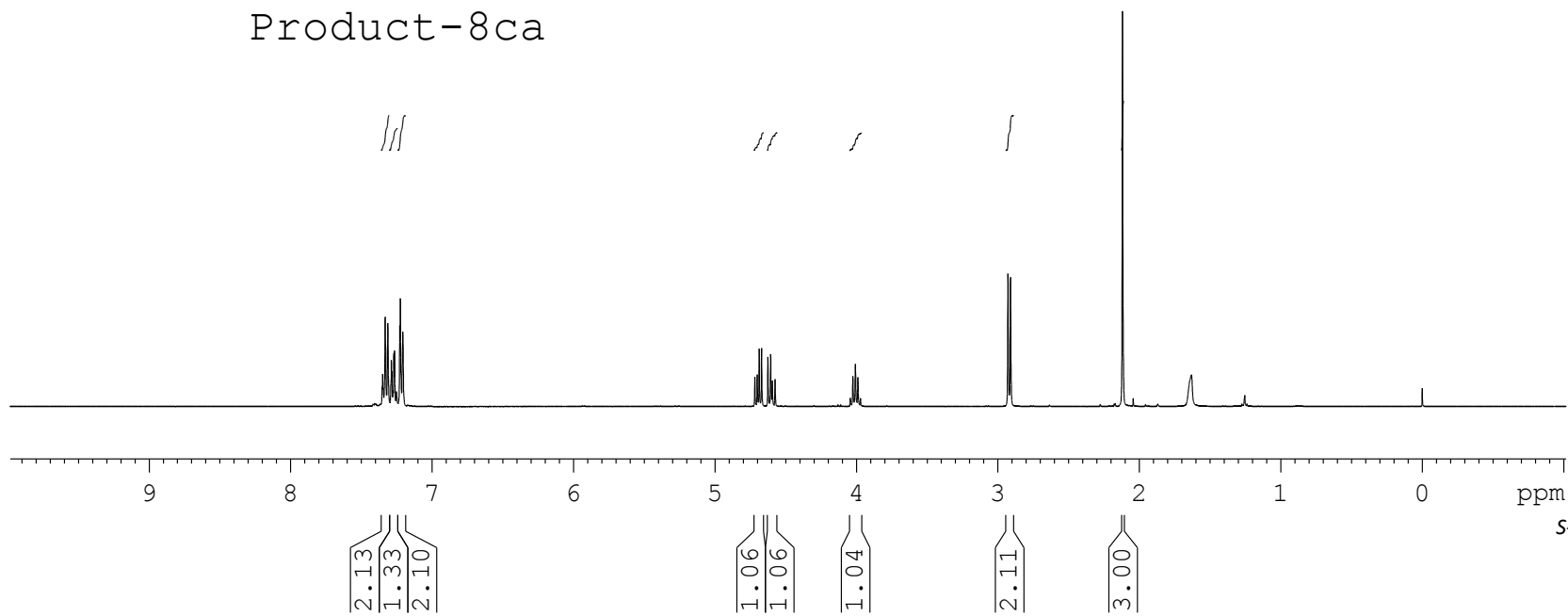
Product-8ba



7.351  
7.348  
7.344  
7.331  
7.327  
7.312  
7.290  
7.286  
7.283  
7.274  
7.268  
7.263  
7.253  
7.250  
7.247  
7.227  
7.223  
7.218  
7.206  
4.717  
4.700  
4.686  
4.669  
4.624  
4.605  
4.593  
4.574  
4.042  
4.024  
4.006  
3.988  
3.970  
2.927  
2.909  
— 2.118



Product-8ca



— 205.41

— 138.78

— 129.04

— 127.88

— 127.35

— 79.42

— 77.32

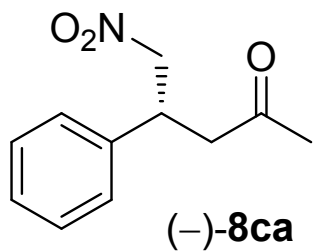
— 77.00

— 76.68

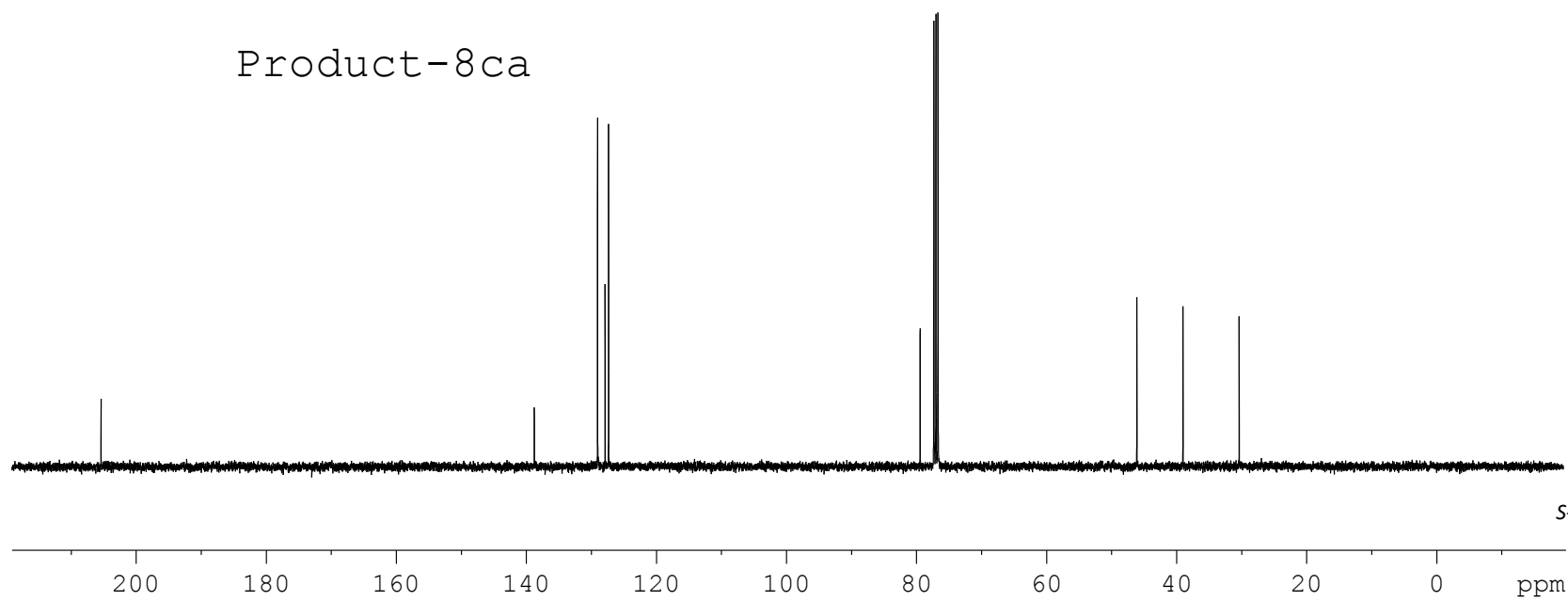
— 46.10

— 39.01

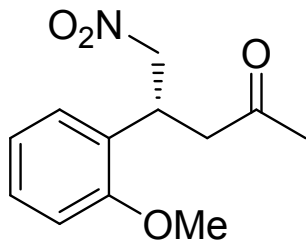
— 30.36



Product-8ca

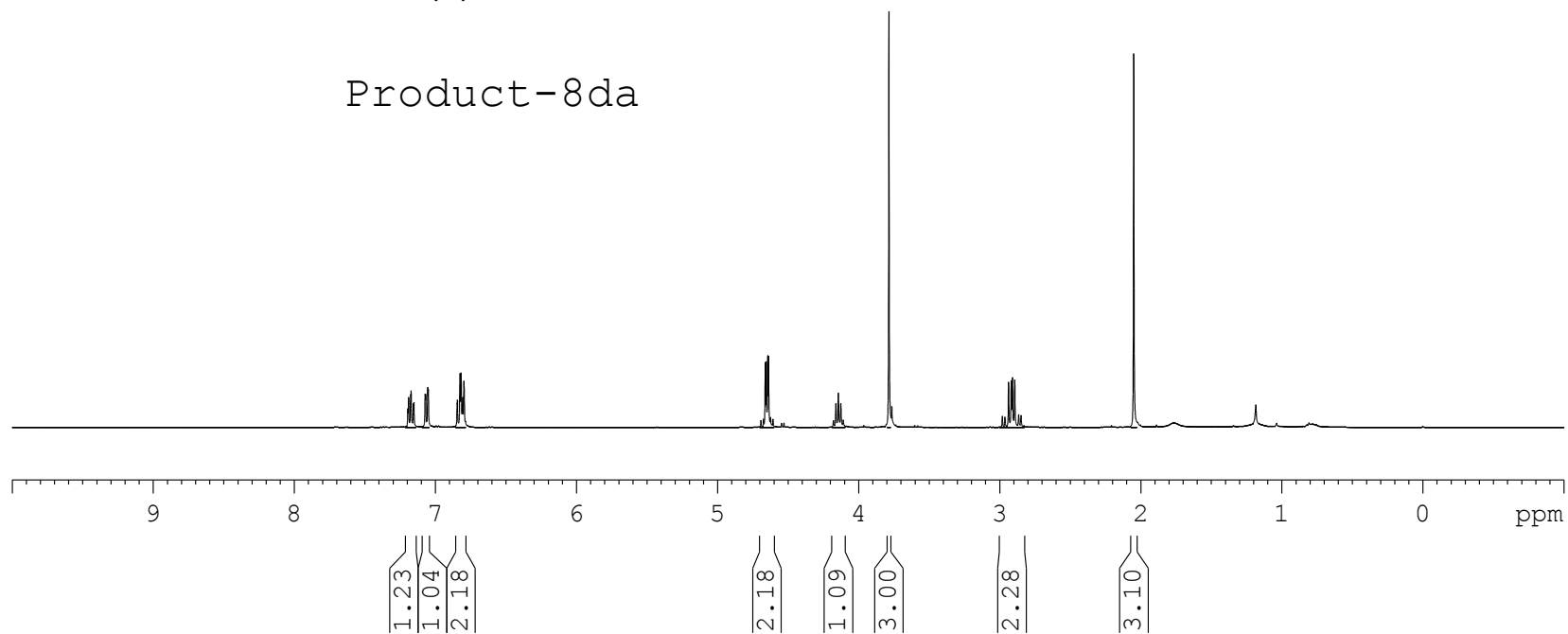


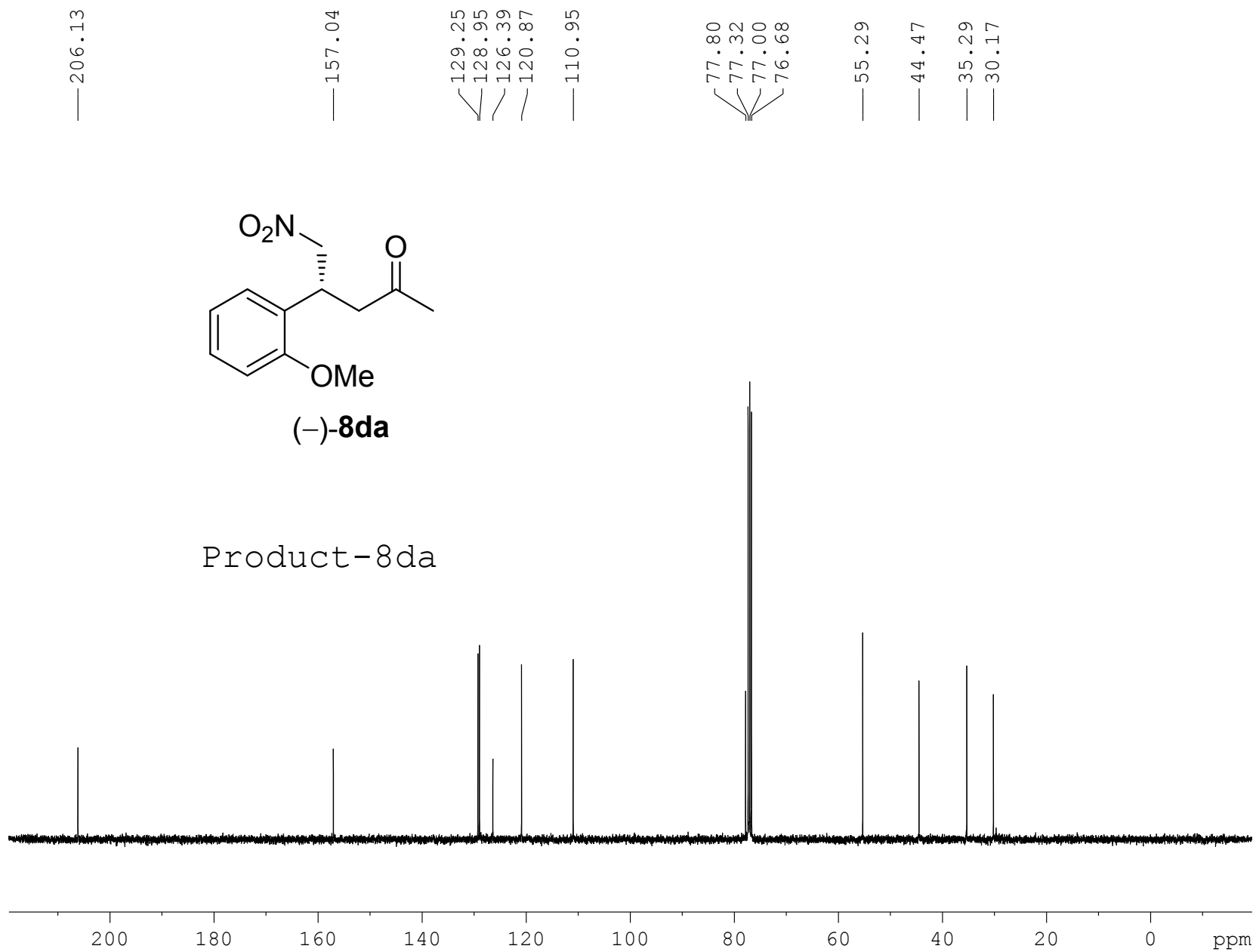
7.196  
7.191  
7.189  
7.175  
7.172  
7.157  
7.152  
7.073  
7.069  
7.054  
7.051  
6.846  
6.844  
6.825  
6.819  
6.807  
6.798  
4.692  
4.675  
4.662  
4.654  
4.644  
4.638  
4.623  
4.607  
4.178  
4.161  
4.144  
4.126  
4.109  
3.785  
2.981  
2.962  
2.937  
2.918  
2.909  
2.893  
2.865  
2.848  
2.049



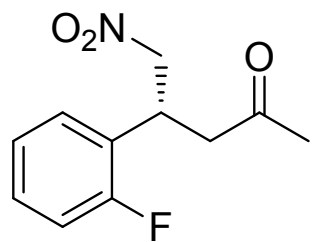
**(-)-8da**

Product-8da



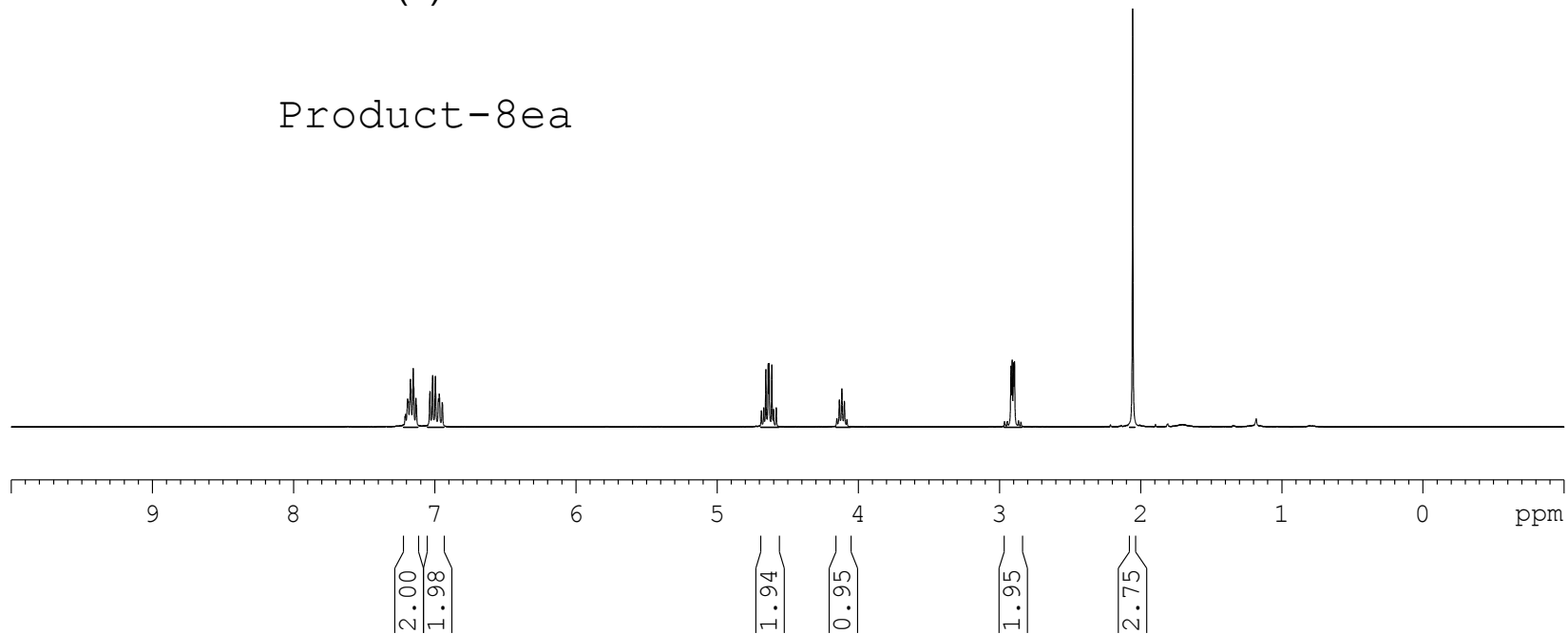


7.209  
7.205  
7.191  
7.186  
7.171  
7.167  
7.152  
7.148  
7.133  
7.129  
7.034  
7.032  
7.015  
7.014  
6.995  
6.974  
6.967  
6.946  
4.685  
4.668  
4.654  
4.637  
4.630  
4.611  
4.599  
4.580  
4.150  
4.133  
4.115  
4.097  
4.079  
2.963  
2.944  
2.917  
2.909  
2.899  
2.892  
2.863  
2.847  
2.055



**(-)-8ea**

Product-8ea



— 205.24

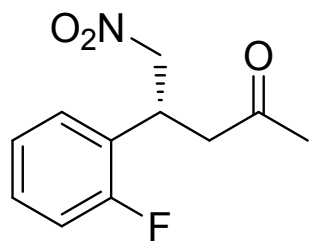
— 162.00  
— 159.56

— 129.94  
— 129.90  
— 129.59  
— 129.50  
— 125.55  
— 125.42  
— 124.57  
— 124.54  
— 116.08  
— 115.86

— 77.70  
— 77.68  
— 77.32  
— 77.00  
— 76.68

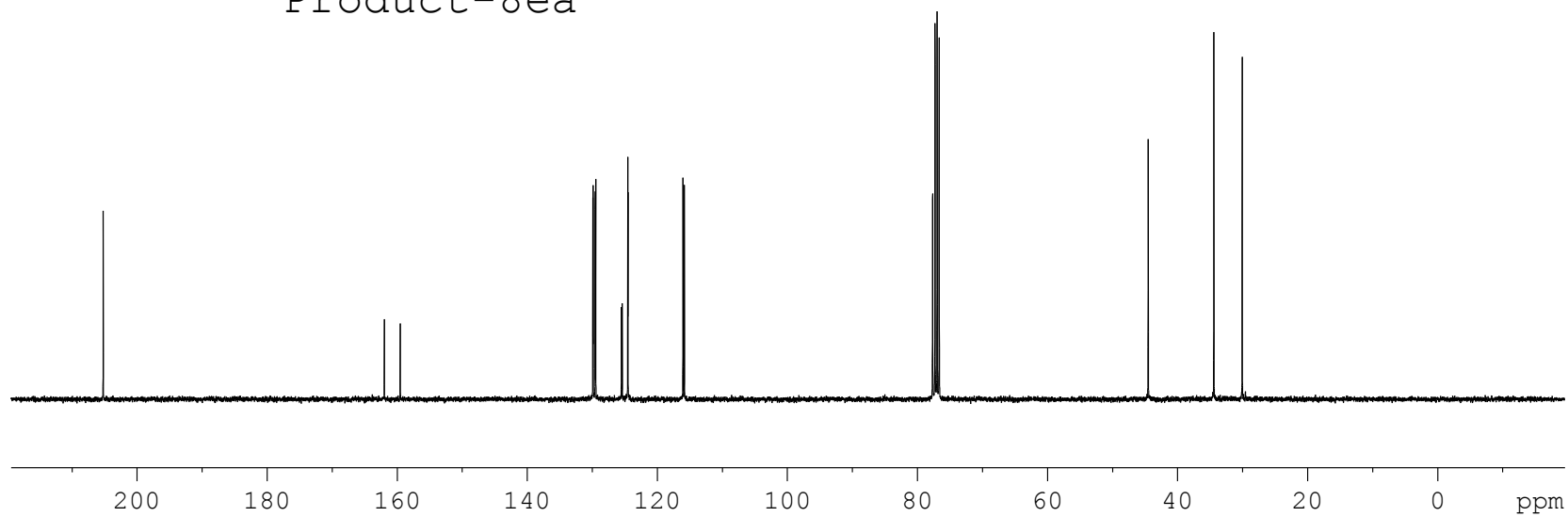
— 44.55  
— 44.53

— 34.45  
— 30.08



**(-)-8ea**

Product-8ea



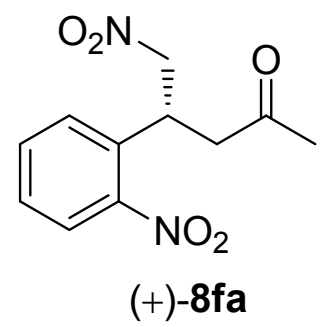


7.821  
7.800  
7.536  
7.517  
7.497  
7.390  
7.370  
7.351  
7.324  
7.304

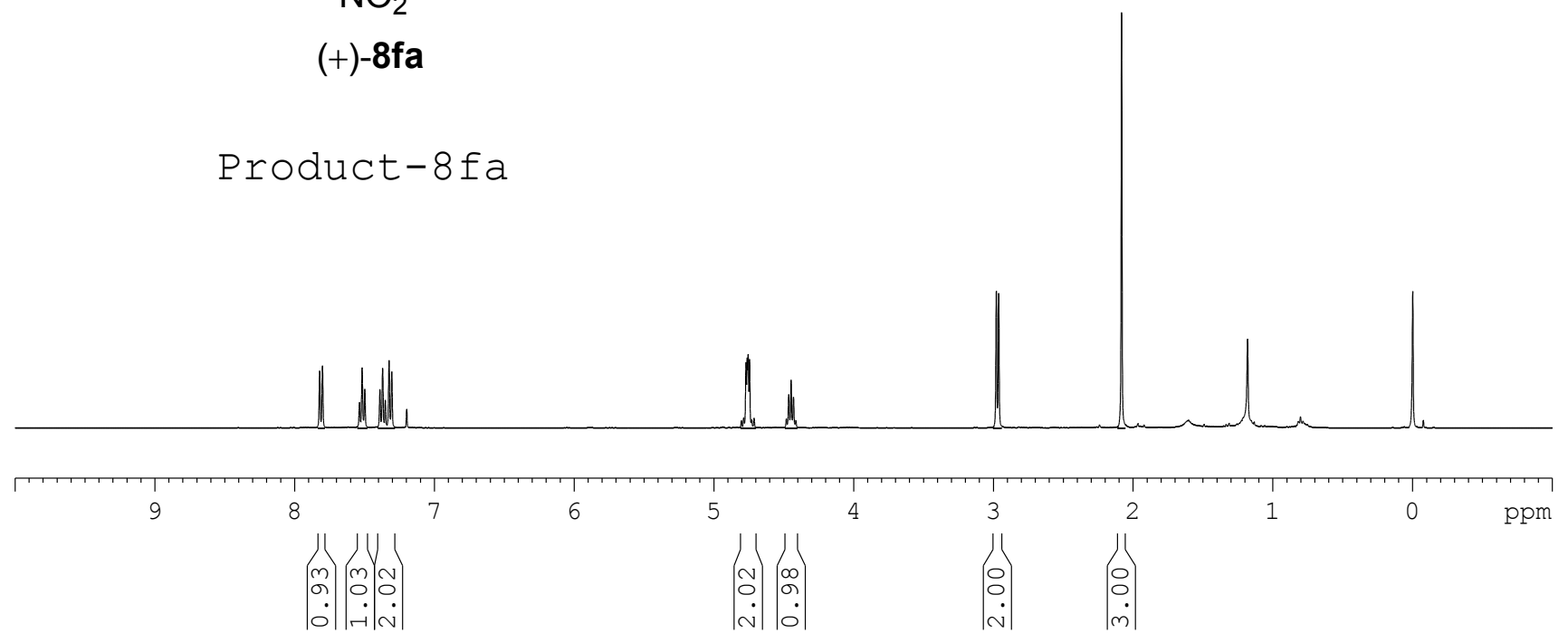
4.802  
4.786  
4.769  
4.761  
4.754  
4.744  
4.729  
4.711  
4.480  
4.463  
4.446  
4.430  
4.413

2.980  
2.963

2.083



Product-8fa



— 204.76

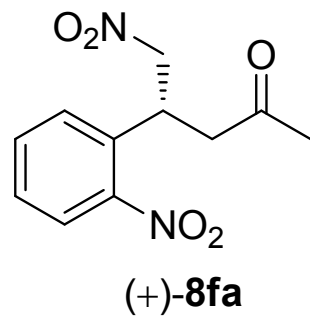
— 149.83

133.46  
133.24  
128.66  
128.47  
125.13

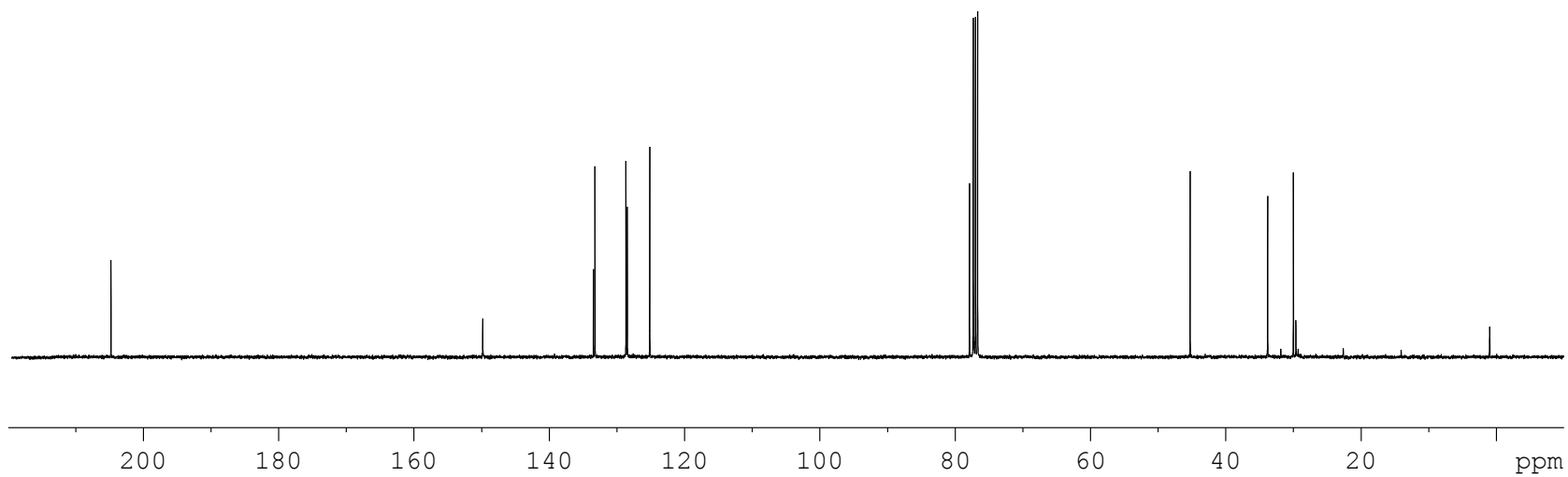
77.87  
77.31  
77.00  
76.68

— 45.25

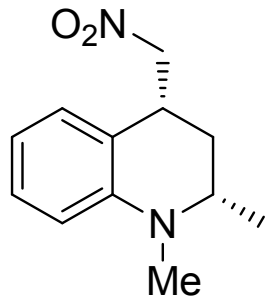
33.79  
30.00  
29.62



Product-8fa

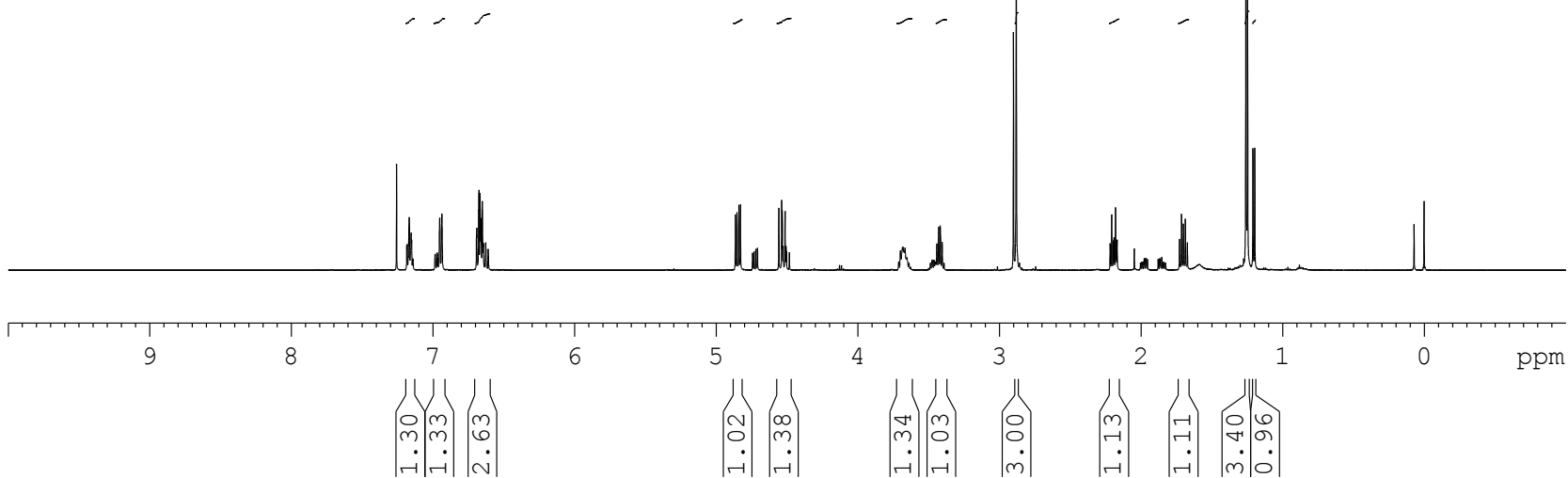


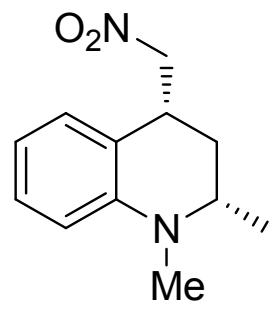
7.256  
7.184  
7.181  
7.168  
7.167  
7.165  
7.153  
7.150  
6.951  
6.936  
6.691  
6.689  
6.676  
6.674  
6.667  
6.662  
6.660  
6.651  
6.644  
6.642  
6.627  
4.863  
4.851  
4.839  
4.827  
4.556  
4.536  
4.532  
4.526  
4.512  
4.506  
3.679  
3.441  
3.427  
3.416  
3.403  
2.900  
2.880  
2.216  
2.205  
2.195  
2.189  
2.178  
2.173  
2.167  
1.727  
1.713  
1.699  
1.685  
1.671  
1.259  
1.246  
1.208  
1.196



*syn*-(+)-**9aa** (major)

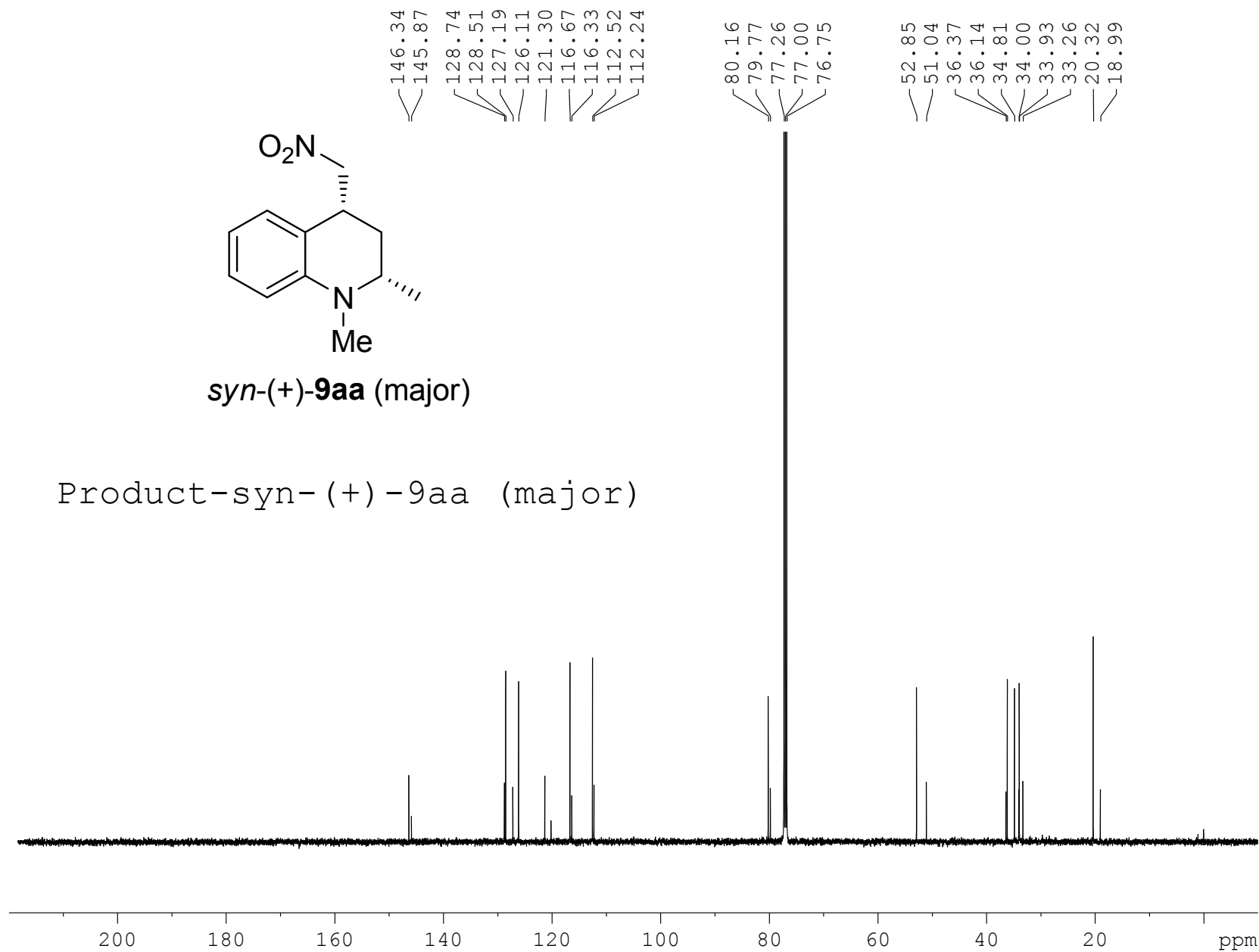
Product-*syn*-(+)-**9aa** (major)

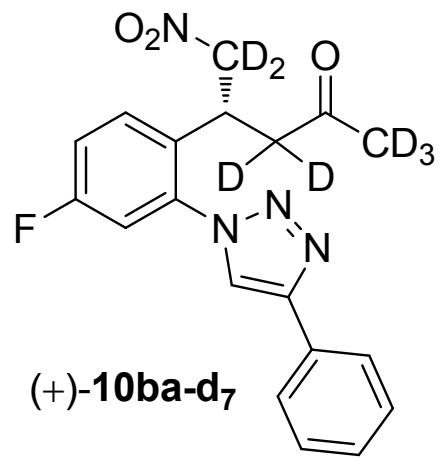
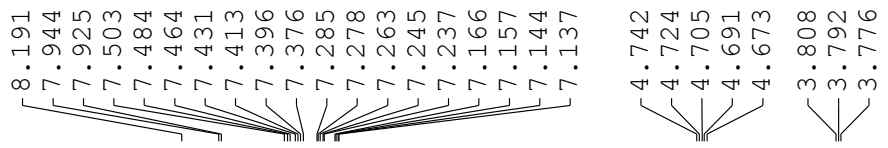




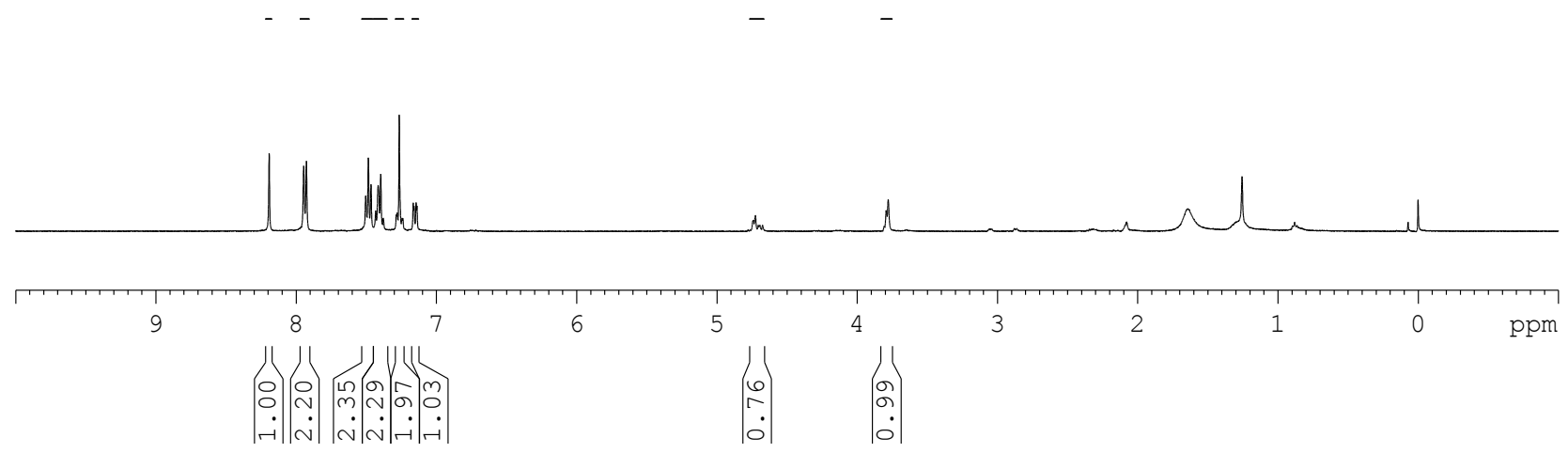
*syn*-(+)-**9aa** (major)

Product-*syn*-(+)-**9aa** (major)

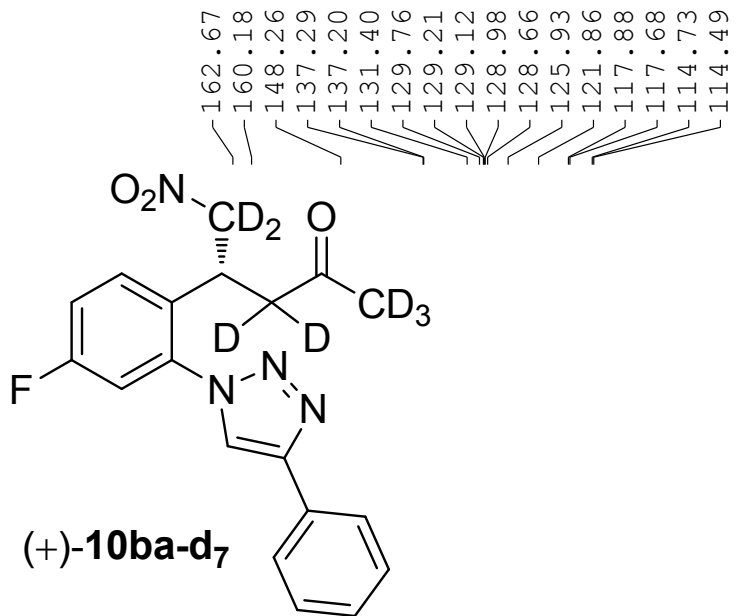




Product-10ba-d7



— 205.35



77.32  
77.00  
76.68

32.88  
32.81

Product-10ba-d7

