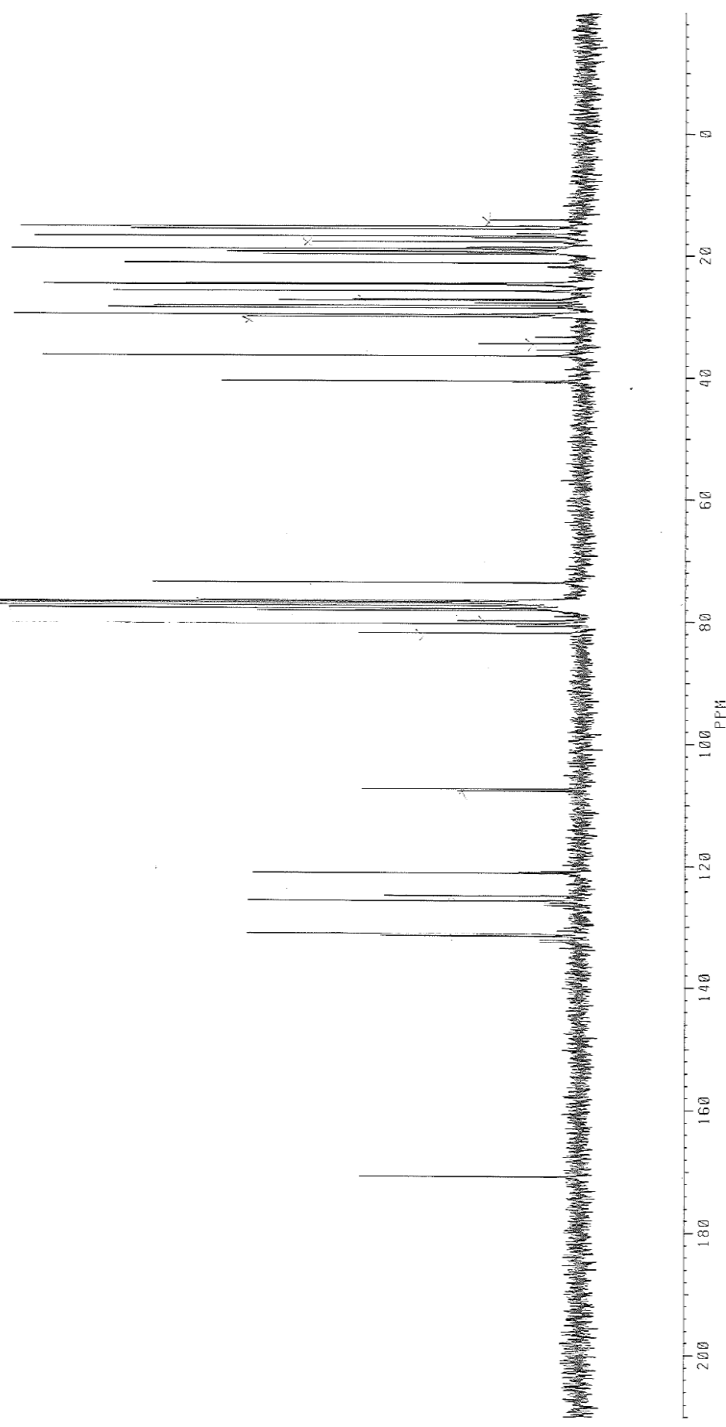


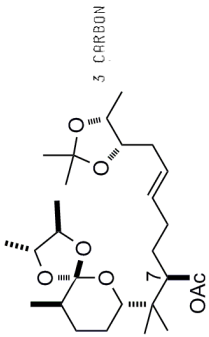
66

SKI1158.2C  
 DATE 22-12-87  
 SF 100.614  
 SY 74.8900000  
 O1 54000.000  
 S1 65536  
 TD 65536  
 SW 25000.000  
 HZ/PI .763  
 PW 3.0  
 RD 0.0  
 RG 1.511  
 KG 400  
 NS 1605  
 TE 297  
 FW 31300  
 OZ 6000.000  
 DP 15H 88  
 LB 2.000  
 GB 0.0  
 CY 33.00  
 F1 18.00  
 F2 210.003P  
 HZ/CH 781.234  
 PPM/CH 6.970  
 SR 43875.41

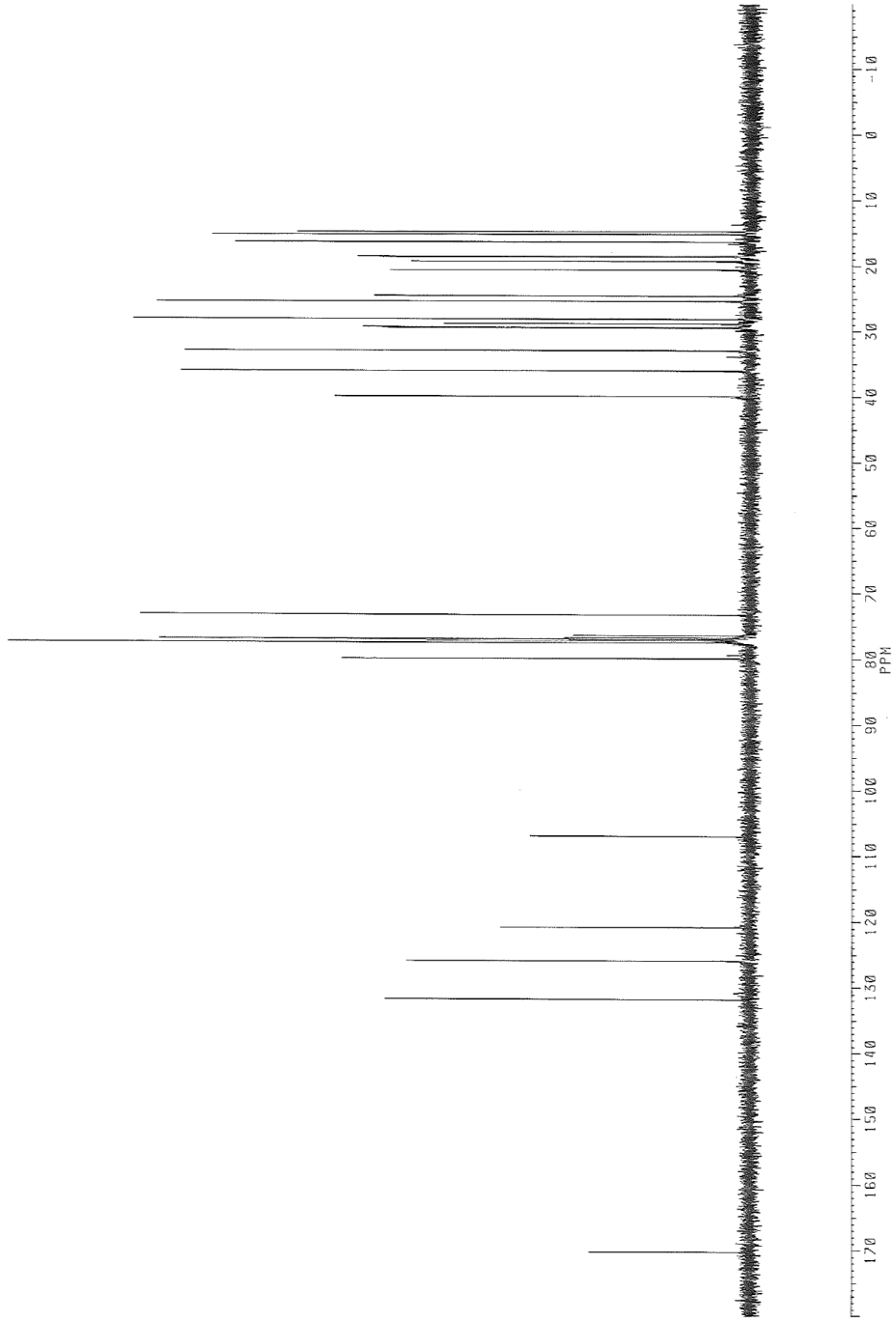
66

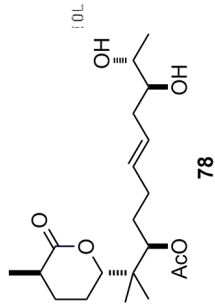




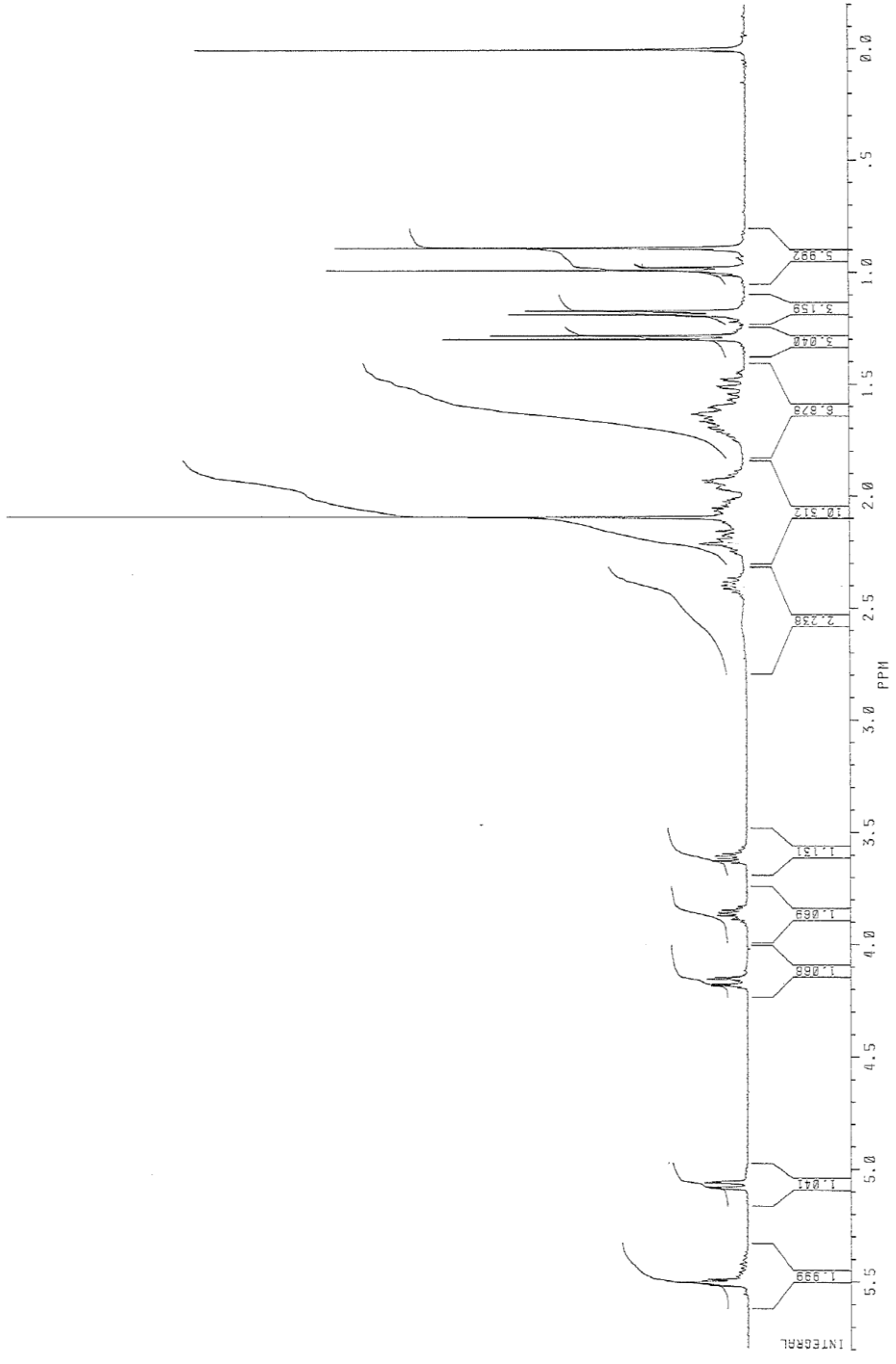


~~84128~~  
 SKI100-1CAR 44.3  
 DATE 10-2-87  
 SF 100.614  
 SY 74.8900000  
 OL 54000.000  
 SL 65536  
 TD 65536  
 SW 25000.000  
 HZ/PT .763  
 PW 3.0  
 RD 0.0  
 AQ 1.511  
 RG 400  
 NS 800  
 TE 297  
 FW 31300.000  
 OZ 6000.000  
 DP 15H BB  
 LB 0.0  
 CB 0.0  
 CY 32.00  
 F1 18.00  
 F2 -19.992P  
 HZ/CM 689.774  
 PPM/CM 6.061  
 SR 43913.56

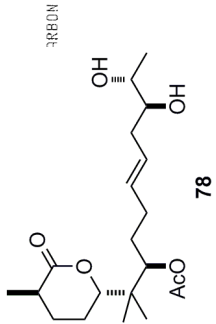




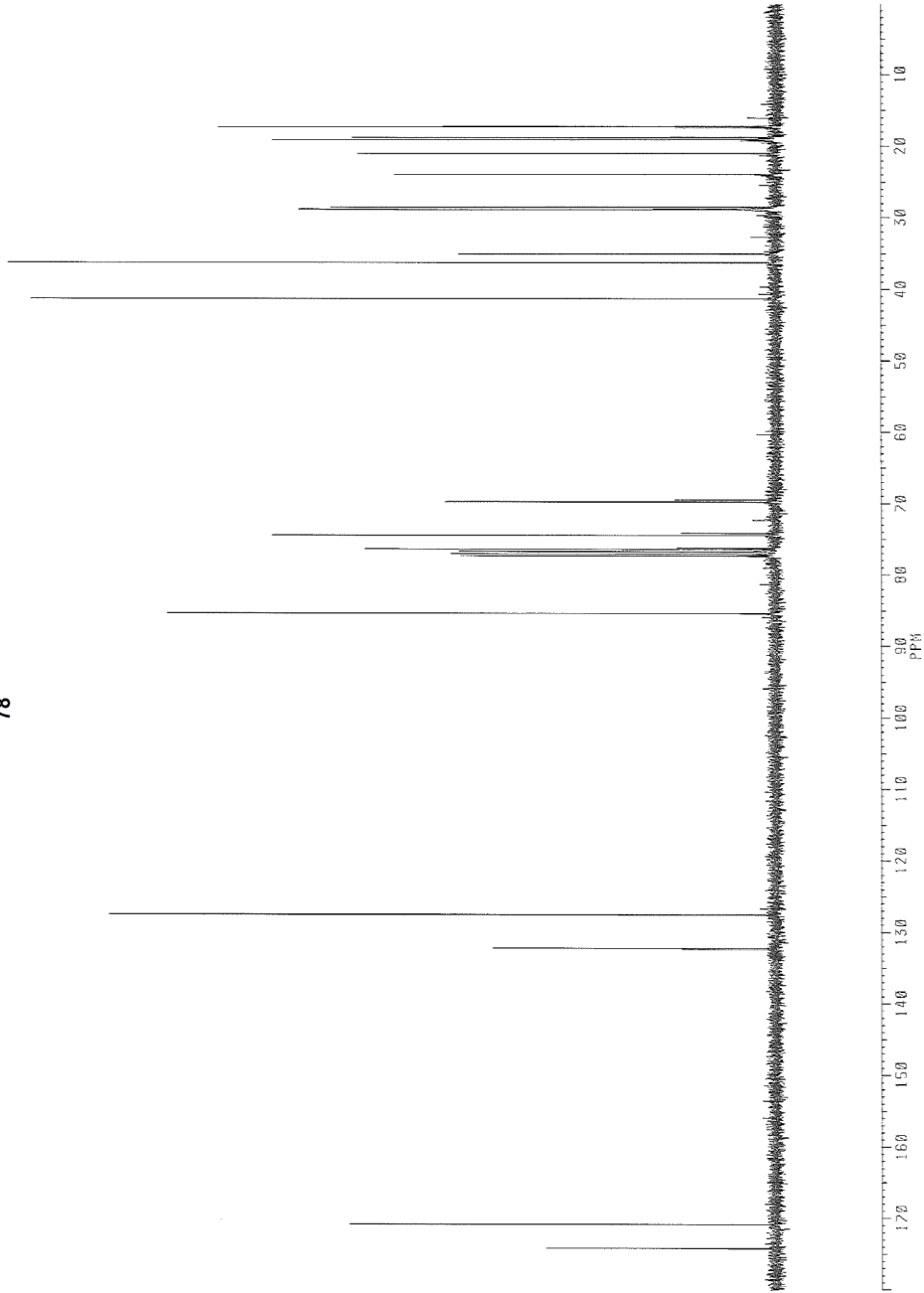
SKI119.001  
 DATE 24-2-87  
 SF 400.134  
 SY 74.8900000  
 OI 6400.000  
 SI 16384  
 TD 16384  
 SW 6024.096  
 HZ/PT .735  
 PW 3.0  
 RD 2.000  
 AQ 1.560  
 RG 64  
 NS 52  
 TE 297  
 FW 2600  
 OZ 6000.000  
 DP 15H P0  
 LB 0.0  
 GB 0.0  
 CX 33.00  
 CY 18.00  
 F1 5.800P  
 F2 --2.200P  
 HZ/CH 72.756  
 PPM/CH .182  
 SR 4391.72



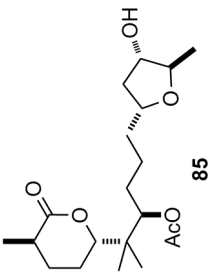
78



SK1149.LCAR  
 DATE 6--3-87  
 SF 100.614  
 SY 74.8300000  
 O1 54000.000  
 S1 65536  
 TD 65536  
 SW 25000.000  
 HZ/PT .765  
 PW 3.0  
 RD 0.0  
 AQ 1.311  
 RG 400  
 TS 266  
 TE 297  
 FV 31300  
 O2 6000.000  
 DP 15H 6B  
 LB 0.0  
 GB 0.0  
 CX 33.00  
 CY 18.00  
 F1 180.005P  
 F2 .004P  
 HZ/CN 548.808  
 PPH/CH 5.455  
 SR 43881.52







9K-II-67.C

41.30  
40.51  
36.28  
36.18  
29.55  
29.34  
28.57  
23.96  
22.42  
20.93  
19.17  
18.81  
17.61  
15.52  
17.29

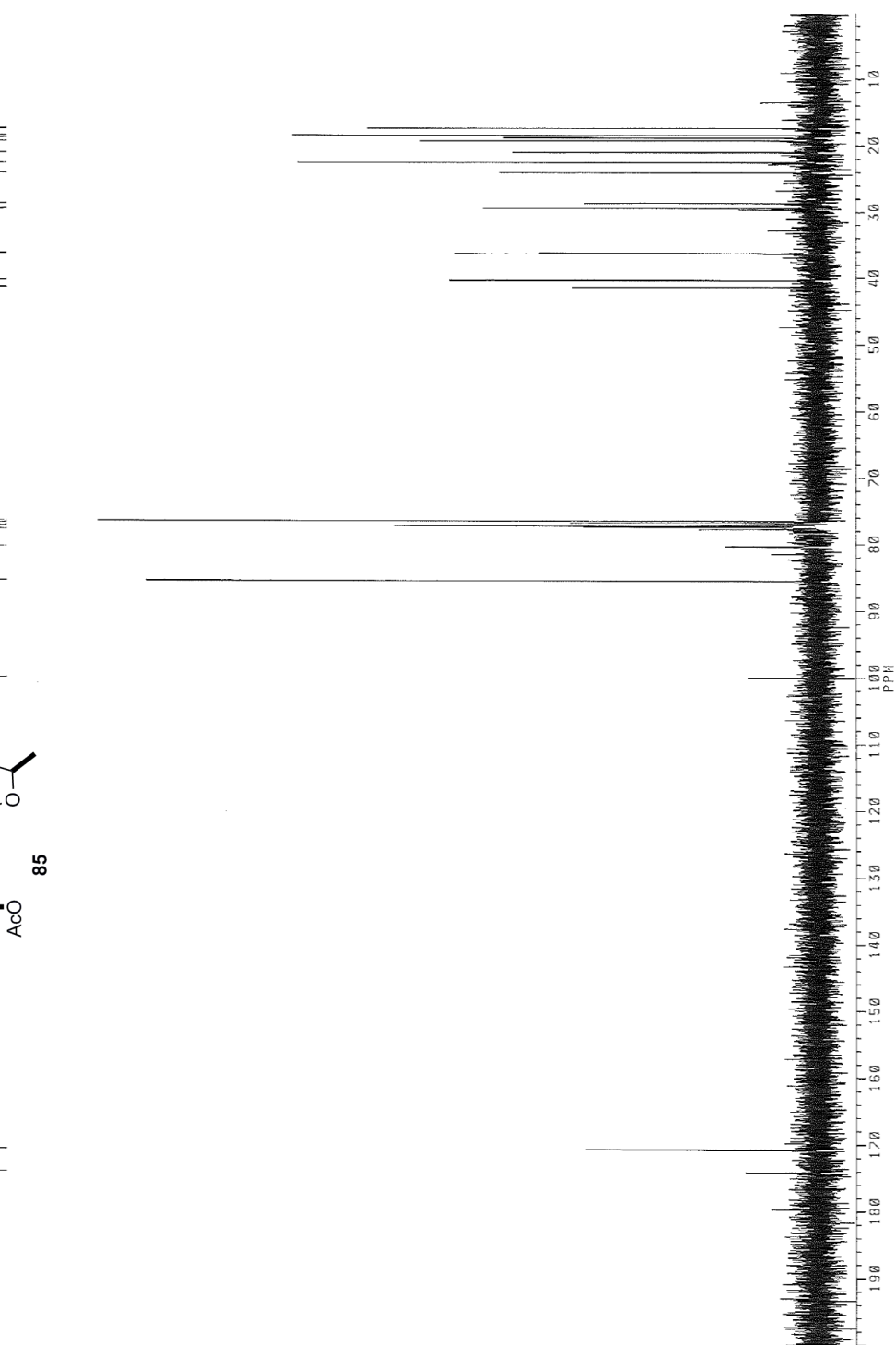
95.46  
90.28  
77.54  
77.31  
77.19  
72.08  
75.67  
78.48

174.18  
170.22

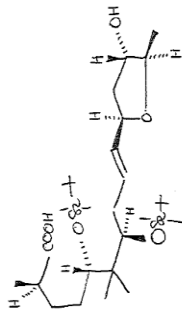
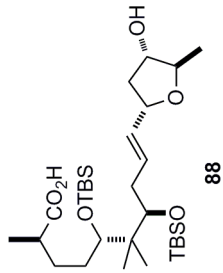


AJ1165.001  
DATE 6-6-87  
SF 100.614  
SY 74.8900000  
Q1 54000.000  
S1 65536  
TD 65536  
SW 25000.000  
HZ/PT .763  
PW 3.0  
RD 0.0  
AQ 1.311  
RG 400  
NS 1402  
TE 297  
FW 31300  
DZ 60000.000  
DF 15H 86  
LB 0.0  
GB 0.0  
CB 33.00  
CY 18.00  
F1 200.001P  
F2 200.004P  
HZ/CM 609.724  
PPM/CH 6.061  
SR 43876.17

PPM

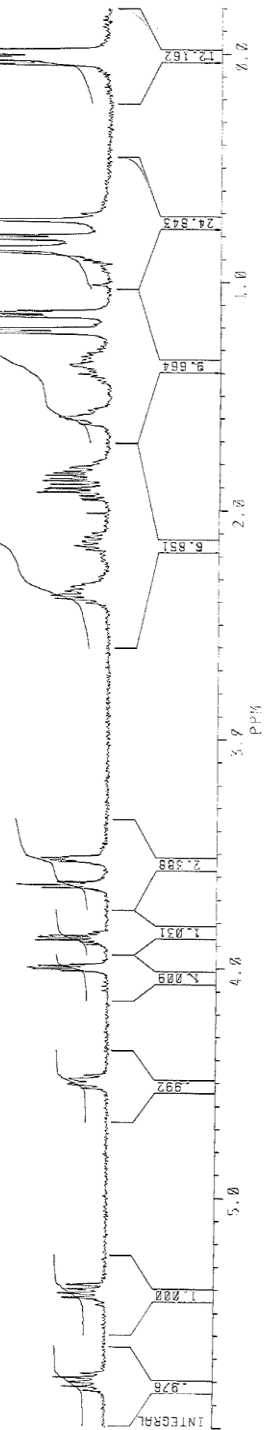






88

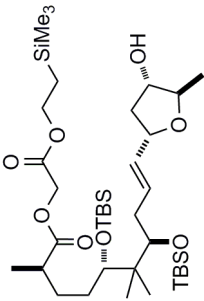
~~88188~~  
 TV11123.001  
 DATE 9-4-85  
 SF 400.134  
 SY 74.890  
 OI 6400.000  
 SI 16384  
 TD 16384  
 SW 6024.096  
 HZ/PT .735  
 PW 3.0  
 RD 0.000  
 AQ 1.560  
 RC 32  
 NS 16  
 TE 297  
 FW 7600  
 OZ 5902.000  
 DP 1SH P0  
 LB 0.000  
 CB 0.000  
 CX 33.000  
 CI 0.000  
 F1 2400.000  
 F2 -80.100  
 HZ/CM 75.185  
 PPM/CM 75.185  
 SR 4406.38



88

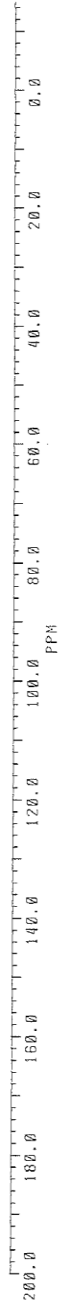


IV-4-77



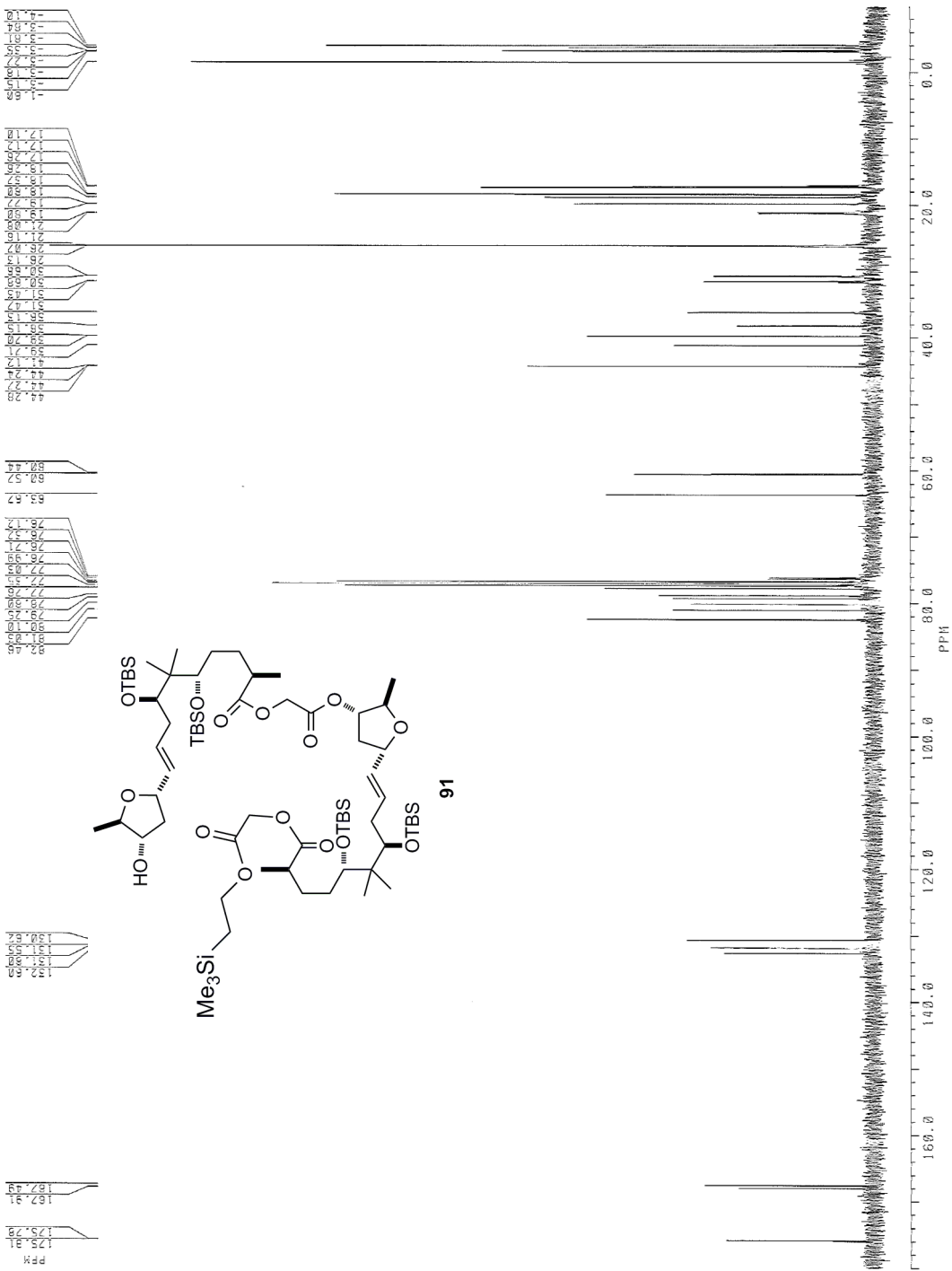
~~XXXX~~  
 TVIV77.001  
 DATE 27-12-85  
 SF 100.627  
 ST 74.890  
 OI 54000.000  
 S1 65536  
 ID 65536  
 SW 25000.000  
 HZ/PT .765  
 PW 3.0  
 RO 0.0  
 RC 1.311  
 NS 400  
 TE 2953  
 293  
 FW 31300  
 OZ 5628.500  
 DP 15H P0  
 LB -500  
 GB 0.0  
 CX 30.00  
 CY 17.00  
 F1 200.001PPH  
 F2 -14.998PPH  
 HZ/CM 721.156  
 PPH/CM 7.167  
 SR 43875.94

89



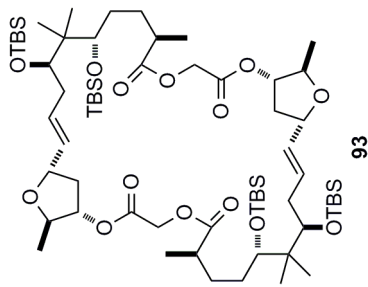


TV IV - 81



~~XXXX~~  
 TV1101.002  
 DATE 10-1-86  
 SF 100.585  
 SY 74.893  
 O1 54000.000  
 S1 65536  
 I0 65536  
 M 25000.000  
 HZ/PT .763  
 PW 3.0  
 RD 0.0  
 AQ 1.511  
 RC 400  
 NS 1311  
 TE 297  
 FW 31300.000  
 O2 5500.000  
 DP 1.5H BB  
 LB 0.000  
 OY 32.00  
 CX 0.0  
 F1 170.999PPM  
 F2 -0.998PPM  
 HZ/CX 579.117  
 PPM/CX 5.757  
 SR 43877.46

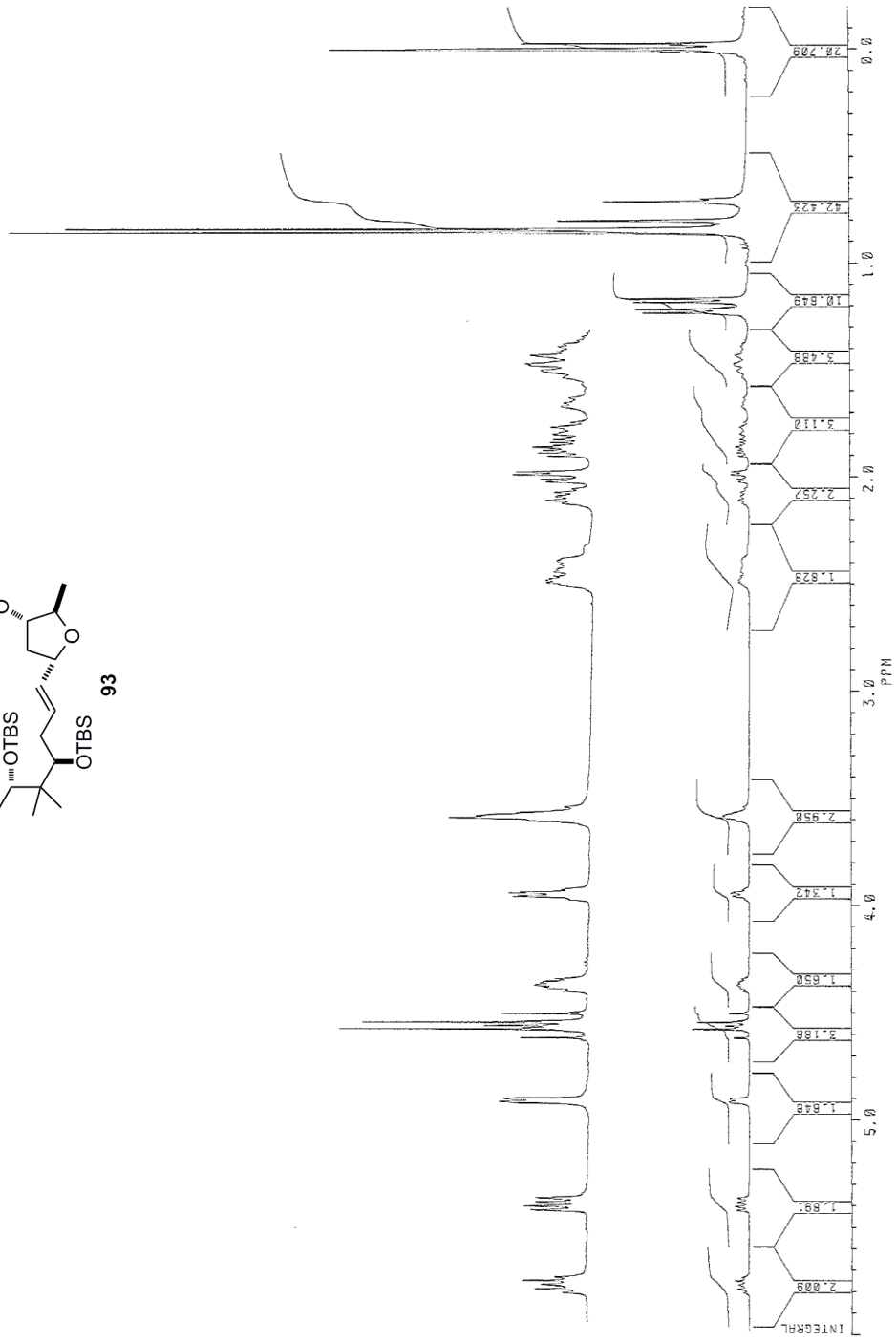
91



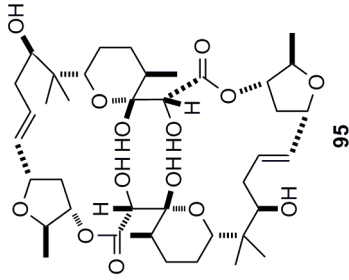
93

~~XXXX~~  
 TVIB84.001  
 DATE 17-1-86  
 SF 400.147  
 SY 74.890  
 O1 6400.000  
 SI 16384  
 TD 16384  
 SW 6024.096  
 HZ/PT 1.755  
 PW 3.0  
 RD 5.000  
 RC 2.560  
 RG 8  
 NS 32  
 TE 293  
 FW 7600  
 O2 6088.206  
 DP 8L P0  
 LB 0.0  
 GB 0.0  
 CX 35.00  
 CY 18.00  
 F1 6.001PPM  
 F2 -.200PPM  
 HZ/CM 75.185  
 PPM/CM .188  
 SR 4406.28

93



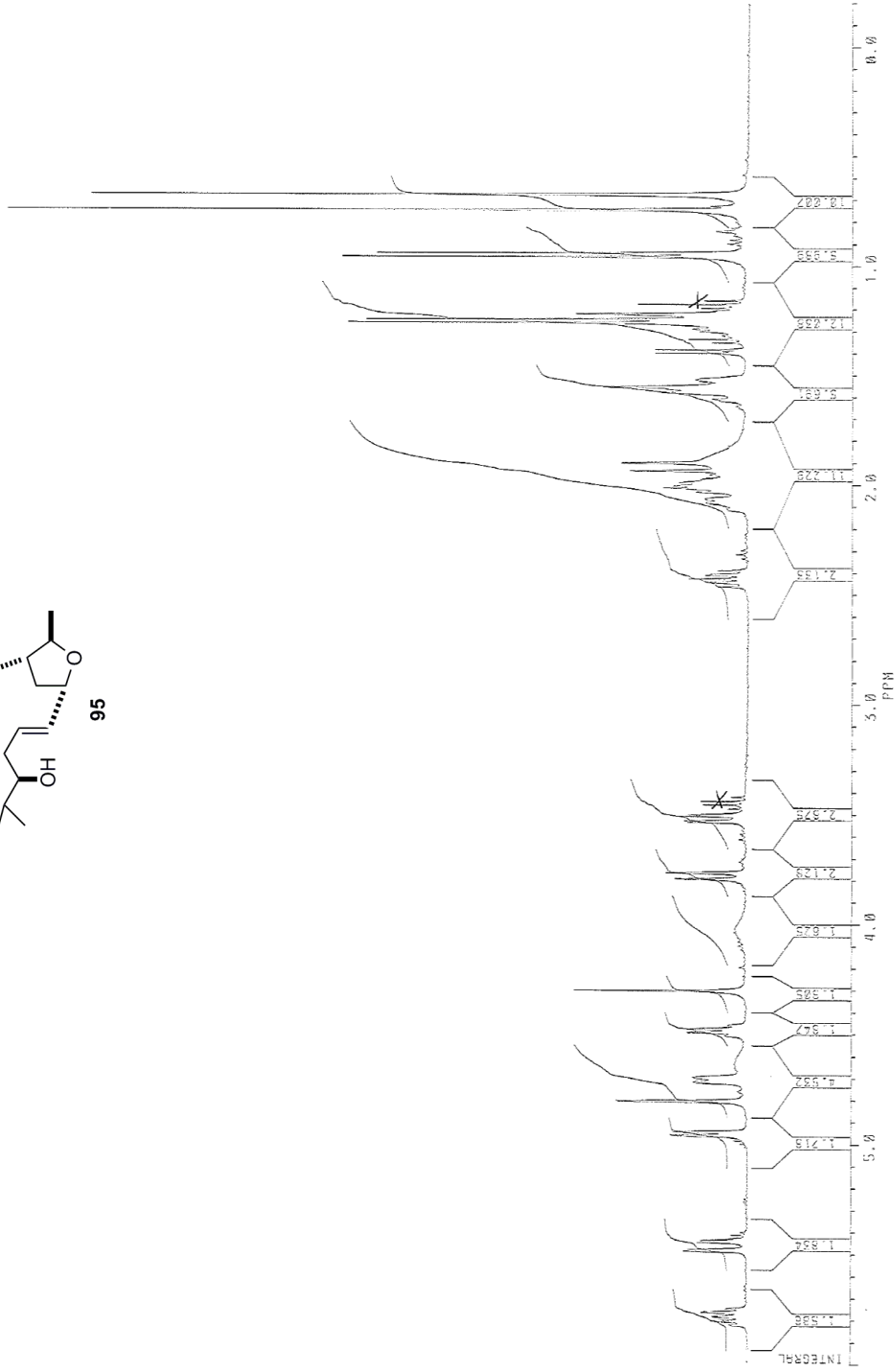




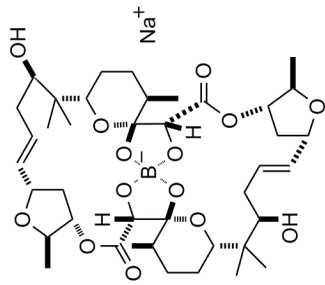
95

~~XXXX~~  
 TV11100.002  
 DATE 30-5-85  
 SF 400.134  
 ST 74.890  
 OI 6400.000  
 SI 18.834  
 SA 16.904  
 SA 6824.000  
 HZ/Pf .735  
 PW 3.0  
 RO 0.000  
 AO 1.300  
 GC 64  
 NS 128  
 TE 297  
 FW 7600  
 OZ 5365.686  
 DP 15H P0  
 LB 0.000  
 GB 0.000  
 CX 35.00  
 CY 18.00  
 F1 2401.01  
 F2 -80.19  
 HZ/CH 75.185  
 PPR/CH .188  
 SR 4406.58

95

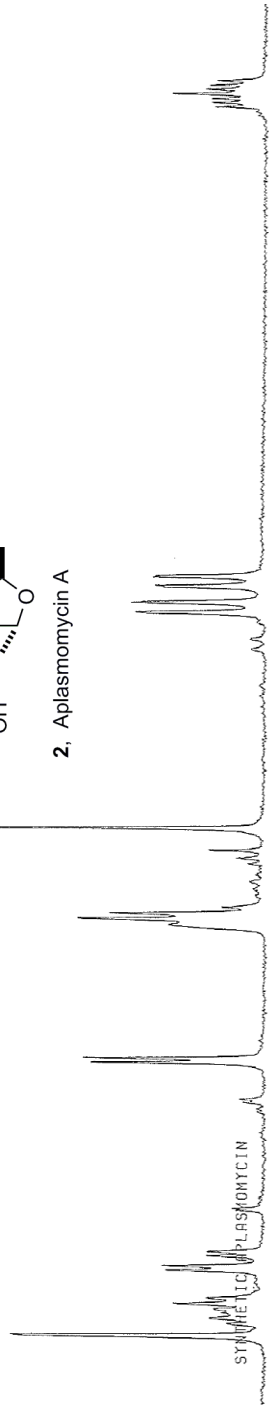




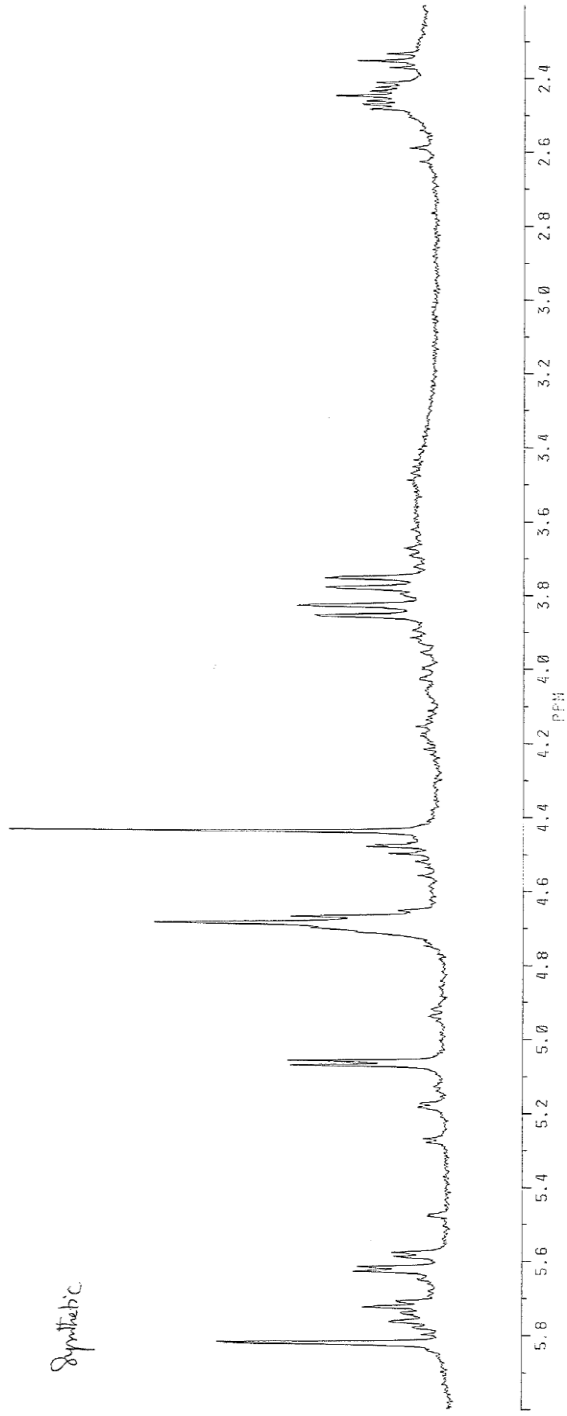


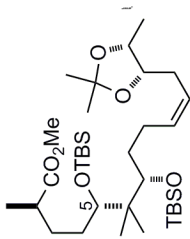
2, Aplasmomycin A

Authentic



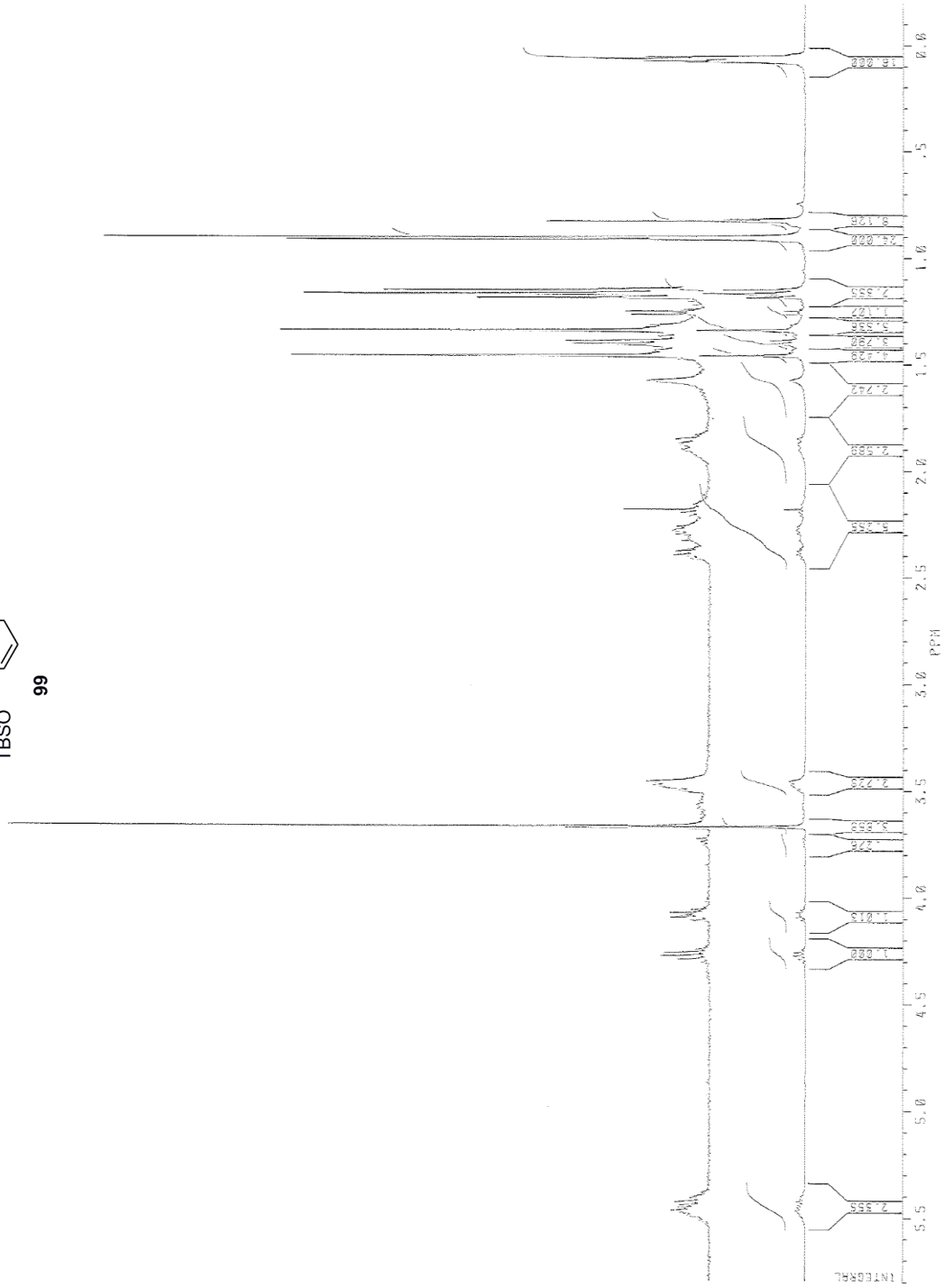
Synthetic





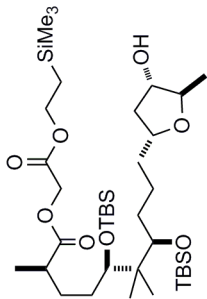
SKV51.001  
 DATE 12-5-88  
 SF 400.134  
 SY 74.8900000  
 Q1 6400.000  
 S1 18384  
 T0 16384  
 SW 6024.096  
 HZ/P1 .795  
 PW 5.0  
 RD 2.000  
 RG 1.368  
 RC 32  
 WS 32  
 TE 297  
 FV 2600  
 Q2 6000.000  
 DP 1SH PC  
 LB 0.0  
 GB 0.0  
 CX 55.00  
 CY 18.00  
 F1 5.001P  
 F2 -.198P  
 HZ/CH 72.754  
 PPH/CH .182  
 SR 4393.00

99



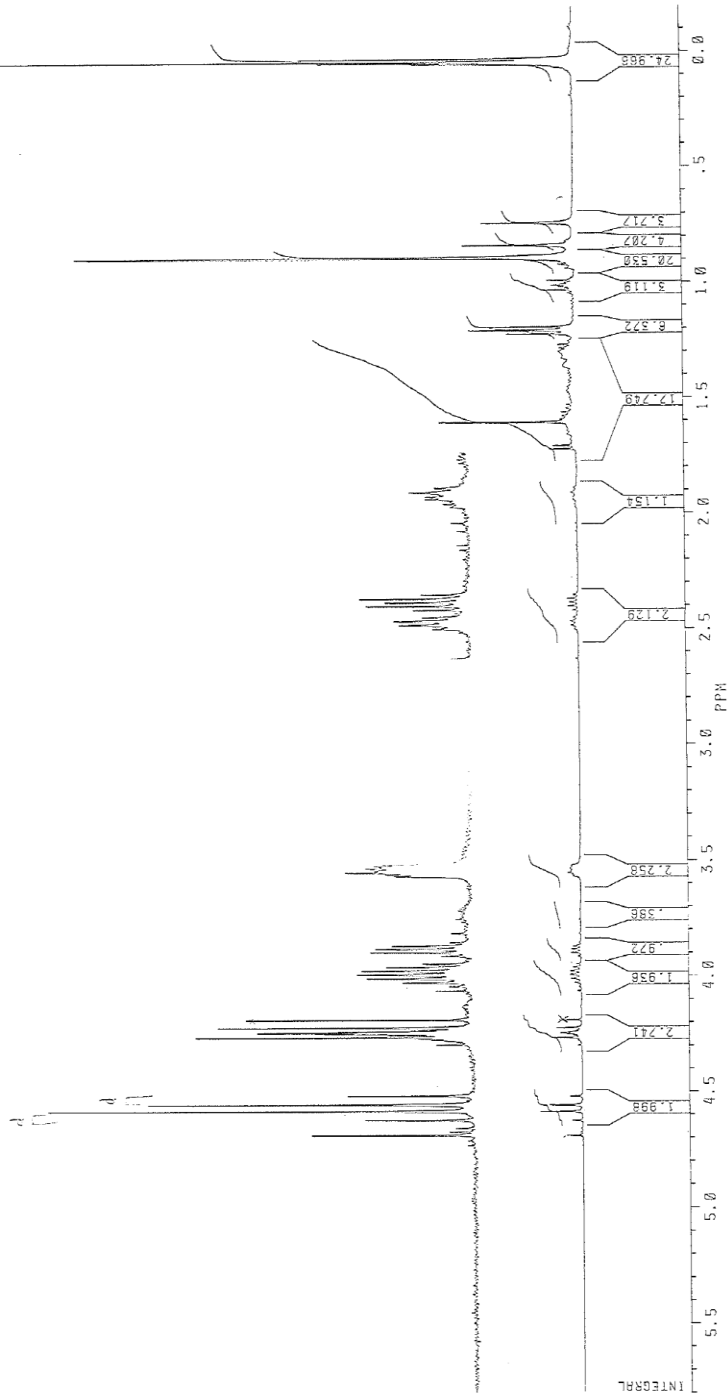






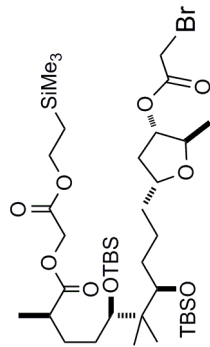
106

~~EX1188~~  
 SKV27 001  
 DATE 29-4-88  
 SF 400.134  
 SY 74.8550000  
 OL 6400.000  
 SL 16384  
 TD 16384  
 SM 6024.096  
 HZ/PT .235  
 PW 3.0  
 RD 2.000  
 AQ 1.360  
 RG 32  
 NS 32  
 TE 297  
 FW 7600  
 DZ 6000.000  
 DP 15H P0  
 LB 0.0  
 CB 0.0  
 CY 30.00  
 CX 10.00  
 FI 0.801P  
 FZ 0.198P  
 HZ/CM 72.734  
 PPM/CM .182  
 SK 4393.00







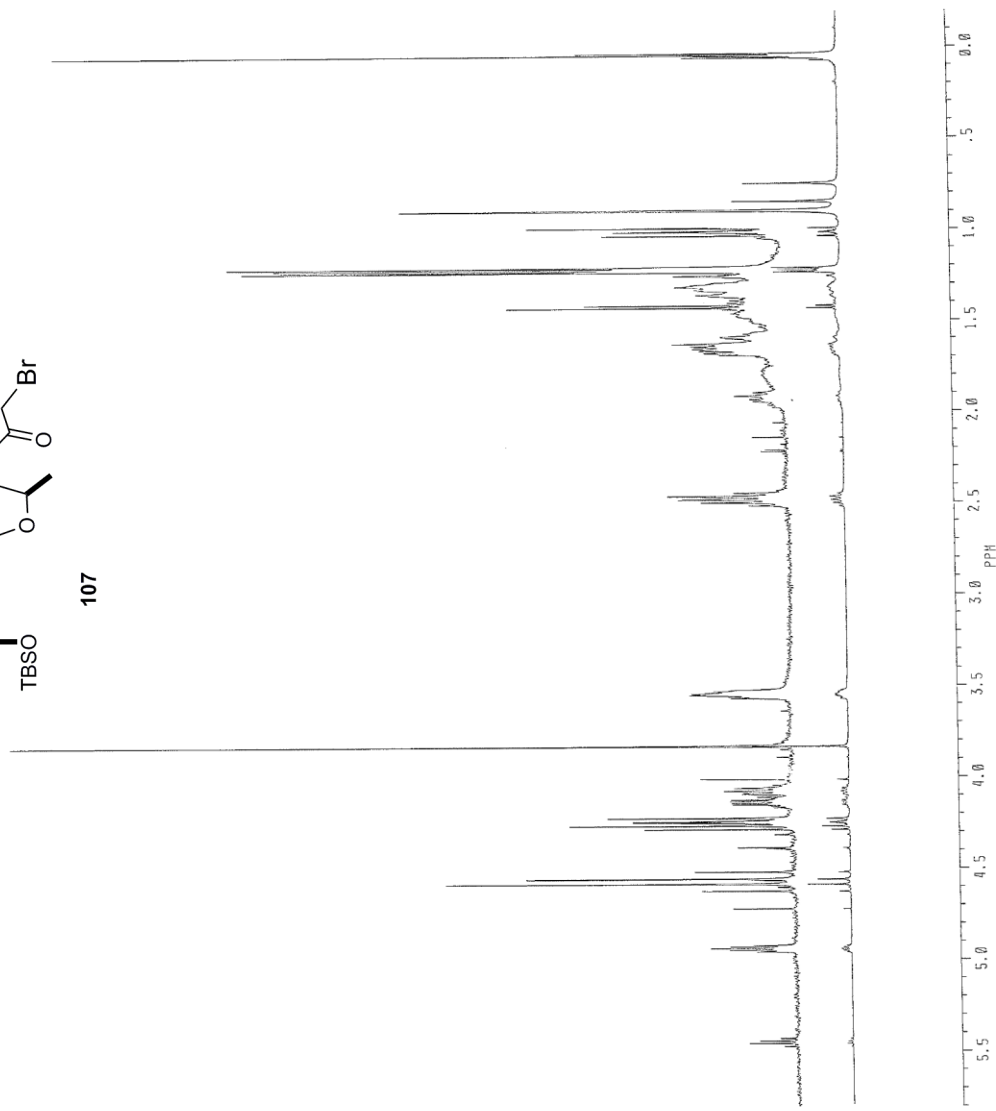


107



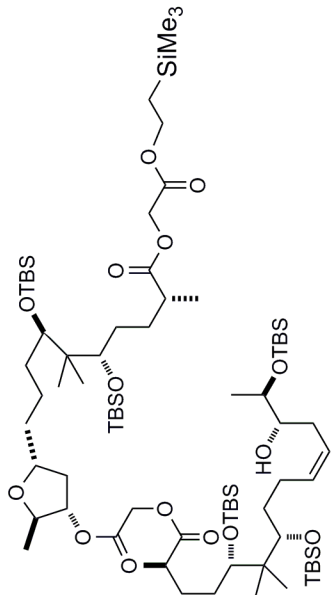
SKY33.001  
 DATE 17-5-08  
 SF 400.134  
 ST 74.8900000  
 O1 6390.008  
 S1 16384  
 S2 16384  
 SZ 6024.096  
 HZ/P1 .735  
 PH 3.0  
 R0 2.000  
 R1 1.563  
 R2 40  
 NS 32  
 TE 297  
 FM 7600  
 D2 6000.000  
 DP 15H P0  
 LB 0.0  
 GB 0.0  
 CX 35.00  
 CY 18.00  
 F1 5.001P  
 F2 -.198P  
 HZ/CN 72.734  
 PPM/CN .182  
 SR 4395.00

107





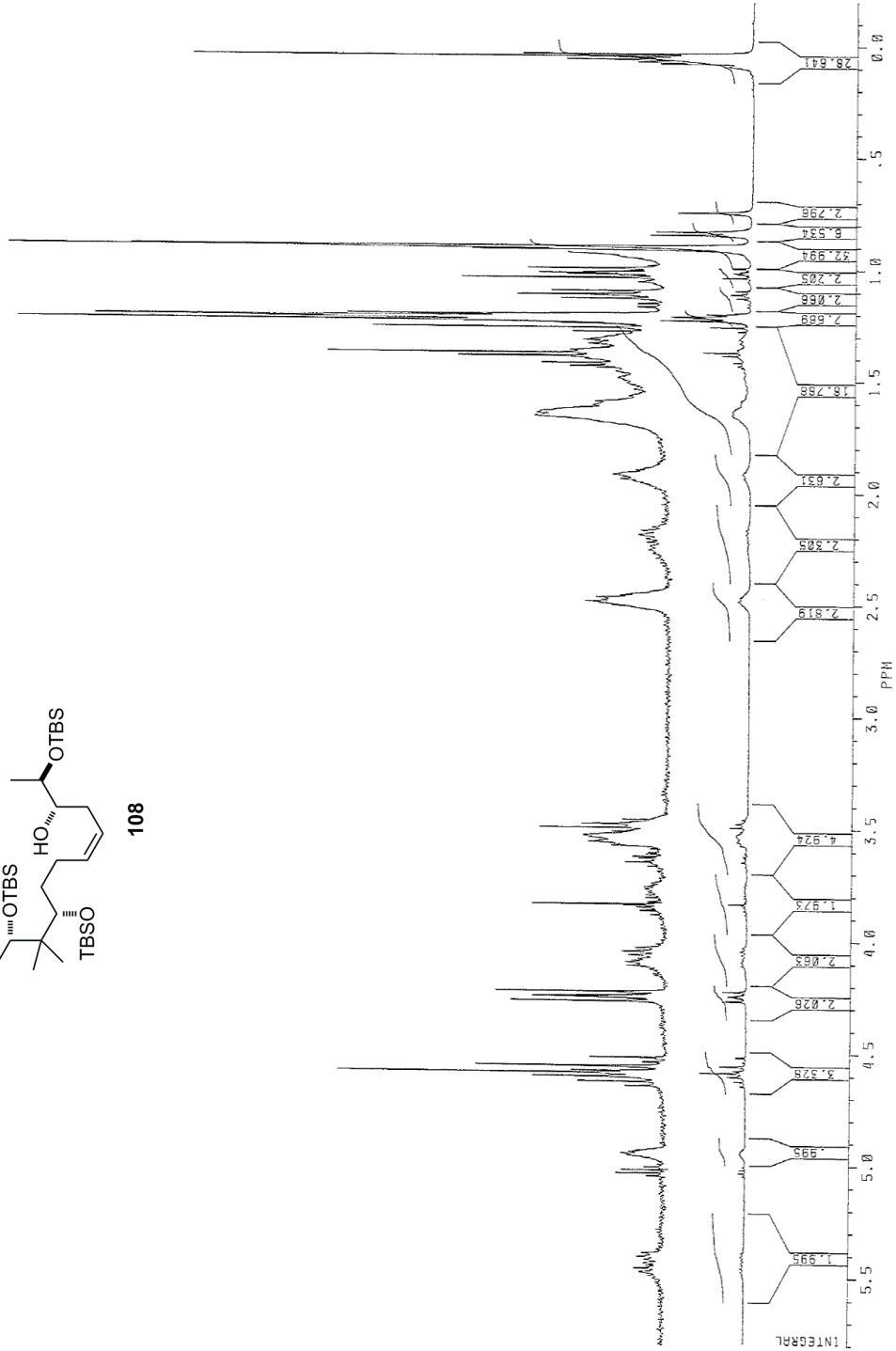




108

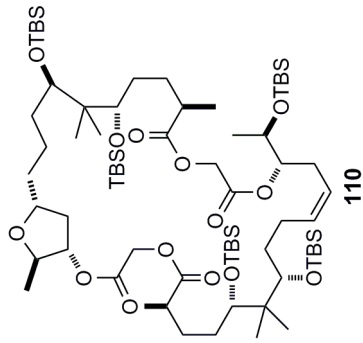
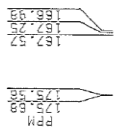
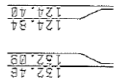
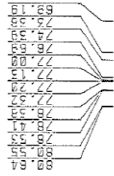
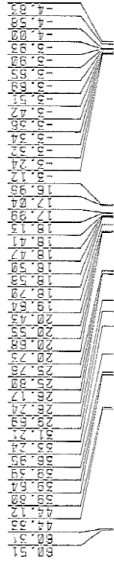
SKV37 001  
 DATE 27-5-88  
 SF 400.134  
 SY 74.8900000  
 O1 6400.000  
 S1 16384  
 TD 16384  
 SW 6024.096  
 HZ/PT .735  
 PW 3.0  
 RD 2.000  
 AQ 1.560  
 RG 32  
 NS 32  
 TE 297  
 FW 7500  
 O2 6000.000  
 DP 15H P0  
 LB 0.0  
 GB 0.0  
 CX 53.00  
 CY 8.00  
 FL 5.801P  
 F2 -.198P  
 HZ/CM 72.734  
 PPM/CM .182  
 SR 4393.100

108



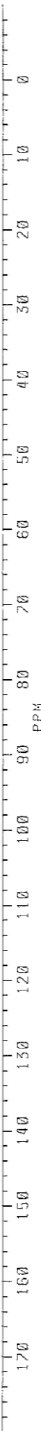
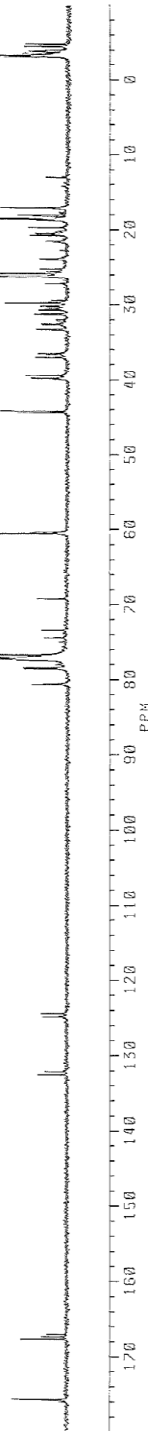


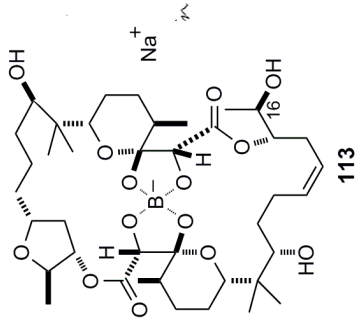
SK-V-42.1C



~~EXPLOR~~  
 SKV42.1C  
 DATE 12-6-88  
 SF 100.614  
 SY 7A.8880000  
 O1 54000.000  
 S1 65536  
 TD 65536  
 SW 25000.000  
 HZ/PT .765  
 PW 3.0  
 RD 0.0  
 AQ 1.311  
 RG 400  
 NS 43252  
 TE 292  
 FW 31300  
 O2 6000.000  
 DP LSH BB  
 LB 1.000  
 GB 0.0  
 CX 33.00  
 CY 18.00  
 F1 180.005P  
 F2 -9.998P  
 HZ/CM 579.302  
 PPM/CM 5.758  
 SR 43872.36

110

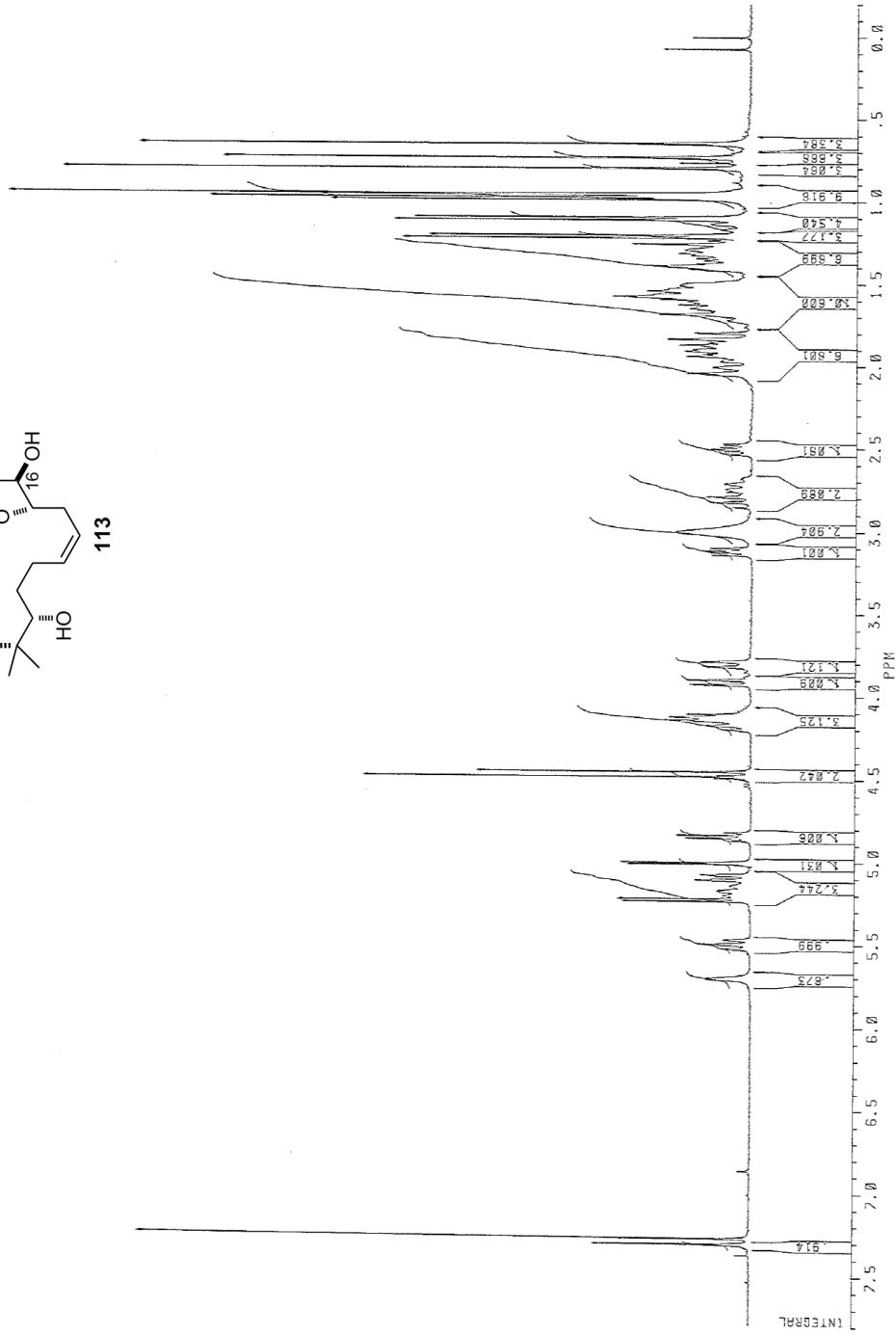




~~8X00XR~~  
 SKPVTB DVBM  
 DATE 30-10-87

SF 400.134  
 SY 74.8300000  
 OI 6400.000  
 S1 16304  
 S2 16304  
 S3 16304.000  
 S4 16304.000  
 S5 16304.000  
 S6 16304.000  
 S7 16304.000  
 S8 16304.000  
 S9 16304.000  
 S10 16304.000  
 S11 16304.000  
 S12 16304.000  
 S13 16304.000  
 S14 16304.000  
 S15 16304.000  
 S16 16304.000  
 S17 16304.000  
 S18 16304.000  
 S19 16304.000  
 S20 16304.000  
 S21 16304.000  
 S22 16304.000  
 S23 16304.000  
 S24 16304.000  
 S25 16304.000  
 S26 16304.000  
 S27 16304.000  
 S28 16304.000  
 S29 16304.000  
 S30 16304.000  
 S31 16304.000  
 S32 16304.000  
 S33 16304.000  
 S34 16304.000  
 S35 16304.000  
 S36 16304.000  
 S37 16304.000  
 S38 16304.000  
 S39 16304.000  
 S40 16304.000  
 S41 16304.000  
 S42 16304.000  
 S43 16304.000  
 S44 16304.000  
 S45 16304.000  
 S46 16304.000  
 S47 16304.000  
 S48 16304.000  
 S49 16304.000  
 S50 16304.000  
 S51 16304.000  
 S52 16304.000  
 S53 16304.000  
 S54 16304.000  
 S55 16304.000  
 S56 16304.000  
 S57 16304.000  
 S58 16304.000  
 S59 16304.000  
 S60 16304.000  
 S61 16304.000  
 S62 16304.000  
 S63 16304.000  
 S64 16304.000  
 S65 16304.000  
 S66 16304.000  
 S67 16304.000  
 S68 16304.000  
 S69 16304.000  
 S70 16304.000  
 S71 16304.000  
 S72 16304.000  
 S73 16304.000  
 S74 16304.000  
 S75 16304.000  
 S76 16304.000  
 S77 16304.000  
 S78 16304.000  
 S79 16304.000  
 S80 16304.000  
 S81 16304.000  
 S82 16304.000  
 S83 16304.000  
 S84 16304.000  
 S85 16304.000  
 S86 16304.000  
 S87 16304.000  
 S88 16304.000  
 S89 16304.000  
 S90 16304.000  
 S91 16304.000  
 S92 16304.000  
 S93 16304.000  
 S94 16304.000  
 S95 16304.000  
 S96 16304.000  
 S97 16304.000  
 S98 16304.000  
 S99 16304.000  
 S100 16304.000

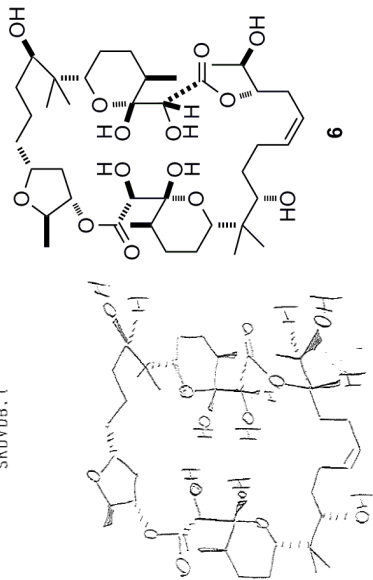
113







SKDVDB.1



~~XXXX~~

SKDVDB.001  
DATE 15-7-87

SF 400.134  
SY 74.8900000  
O1 6400.000  
SI 16384  
TD 16384  
SW 6024.096  
HZ/PF .735

PW 3.0  
R0 2.000  
R1 1.560  
RG 40  
NS 96  
TE 297

FW 7600  
OZ 6000.000  
DP 1SH P0

LB 0.0  
GB 0.0  
CX 33.00  
CI 16.000P  
F1 7.200P  
F2 7.200P  
HZ/CM 97.200  
PPM/CM 97.200  
SR 4392.46

6

