

Supplementary Data

The Mechanism of [2+1] and [2+2] Cycloaddition Reactions of 1-(Phenylseleno)-2-(trimethylsilyl)ethene: An Isotopic Labelling Study

Shoko Yamazaki* and Yuichiro Yanase

Department of Chemistry, Nara University of Education, Takabatake-cho, Nara 630-8528, Japan

Kagetoshi Yamamoto

Department of Chemistry, Graduate School of Science, Osaka University, Toyonaka, Osaka 560-0043, Japan

Contents

1. Copy of NOESY spectra for 3-1-d .	page 1-3
2. Copies of HMBC spectra for 7-1-d .	page 4
3. Copies of HMBC spectra for 8-1-d .	page 5
4. Copies of NOESY spectra for 9-2-d .	page 6-7

PCYCL000

exp5 neway

ACQUISITION ARRAYS
array phase
arraydim 512
phase 1
1 1
2 2

DATE

200

200

200

200

200

200

200

200

200

200

200

200

200

200

200

200

200

200

200

200

200

200

200

200

200

200

200

200

200

200

200

200

200

200

200

200

200

200

200

200

200

200

200

200

200

200

200

200

200

200

200

200

200

200

200

200

200

200

200

200

200

200

200

200

200

200

200

200

200

200

ACQUISITION ARRAYS
array phase
arraydim 512
phase 1
1 1
2 2

DATE

200

200

200

200

200

200

200

200

200

200

200

200

200

200

200

200

200

200

200

200

200

200

200

200

200

200

200

200

200

200

200

200

200

200

200

200

200

200

200

200

200

200

200

200

200

200

200

200

200

200

200

200

200

200

200

200

200

200

200

200

200

200

200

200

200

200

200

200

200

200

ACQUISITION ARRAYS
array phase
arraydim 512
phase 1
1 1
2 2

DATE

200

200

200

200

200

200

200

200

200

200

200

200

200

200

200

200

200

200

200

200

200

200

200

200

200

200

200

200

200

200

200

200

200

200

200

200

200

200

200

200

200

200

200

200

200

200

200

200

200

200

200

200

200

200

200

200

200

200

200

200

200

200

200

200

200

200

200

200

200

200

ACQUISITION ARRAYS
array phase
arraydim 512
phase 1
1 1
2 2

DATE

200

200

200

200

200

200

200

200

200

200

200

200

200

200

200

200

200

200

200

200

200

200

200

200

200

200

200

200

200

200

200

200

200

200

200

200

200

200

200

200

200

200

200

200

200

200

200

200

200

200

200

200

200

200

200

200

200

200

200

200

200

200

200

200

200

200

200

200

200

200

ACQUISITION ARRAYS
array phase
arraydim 512
phase 1
1 1
2 2

DATE

200

200

200

200

200

200

200

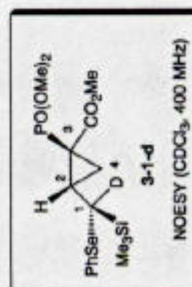
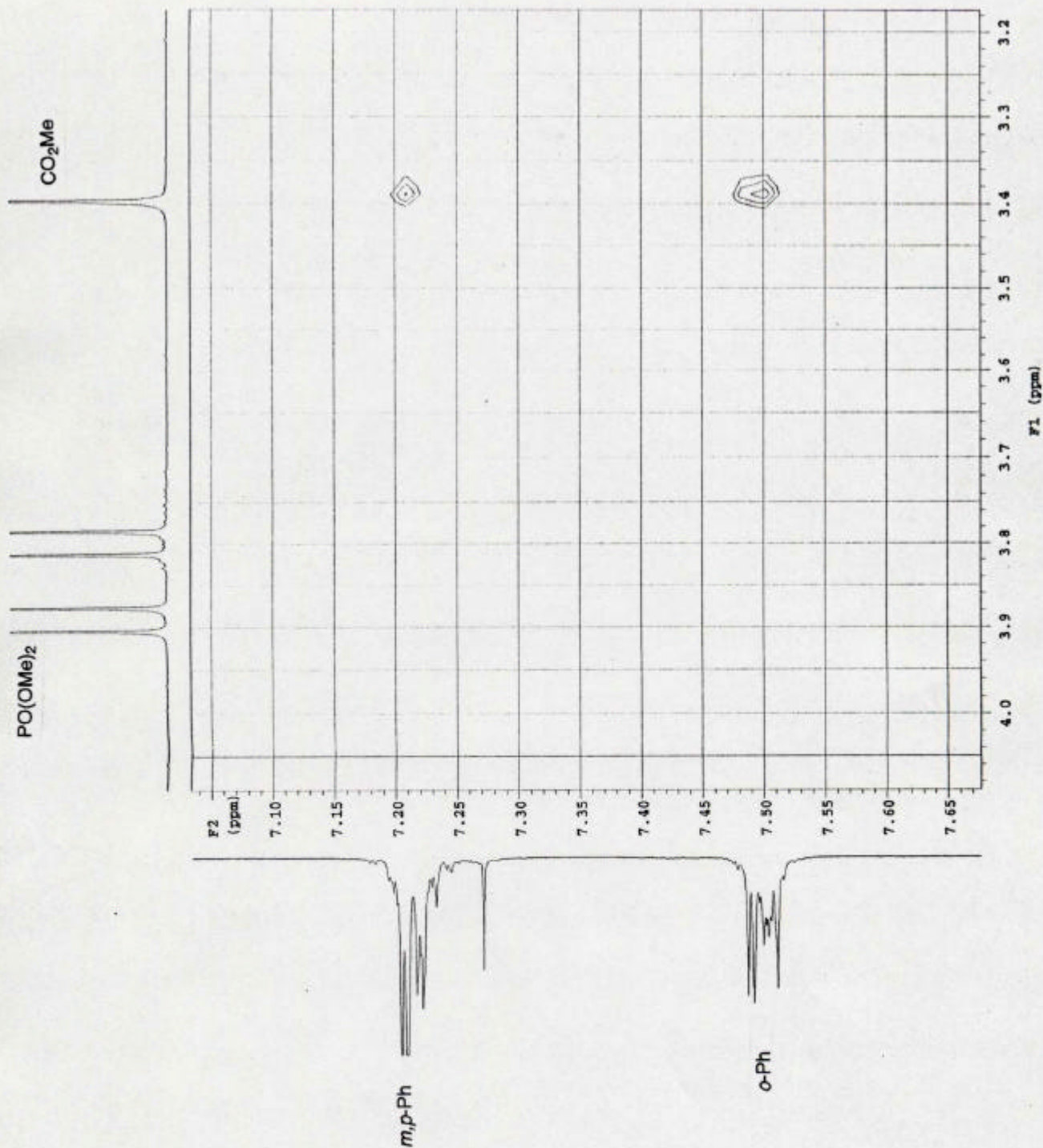
200

200

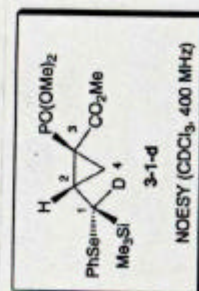
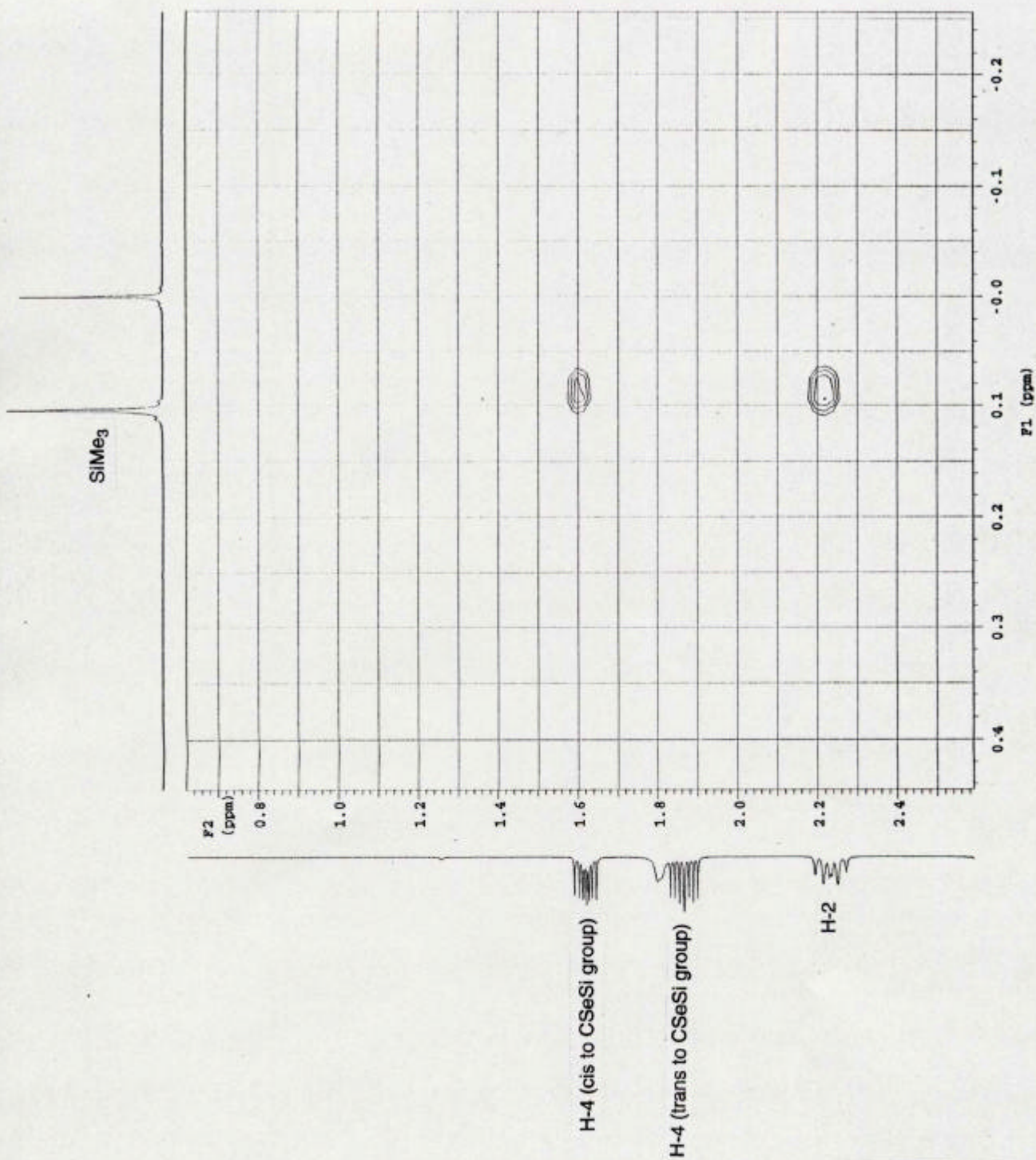
200

$\tau_k = 4$

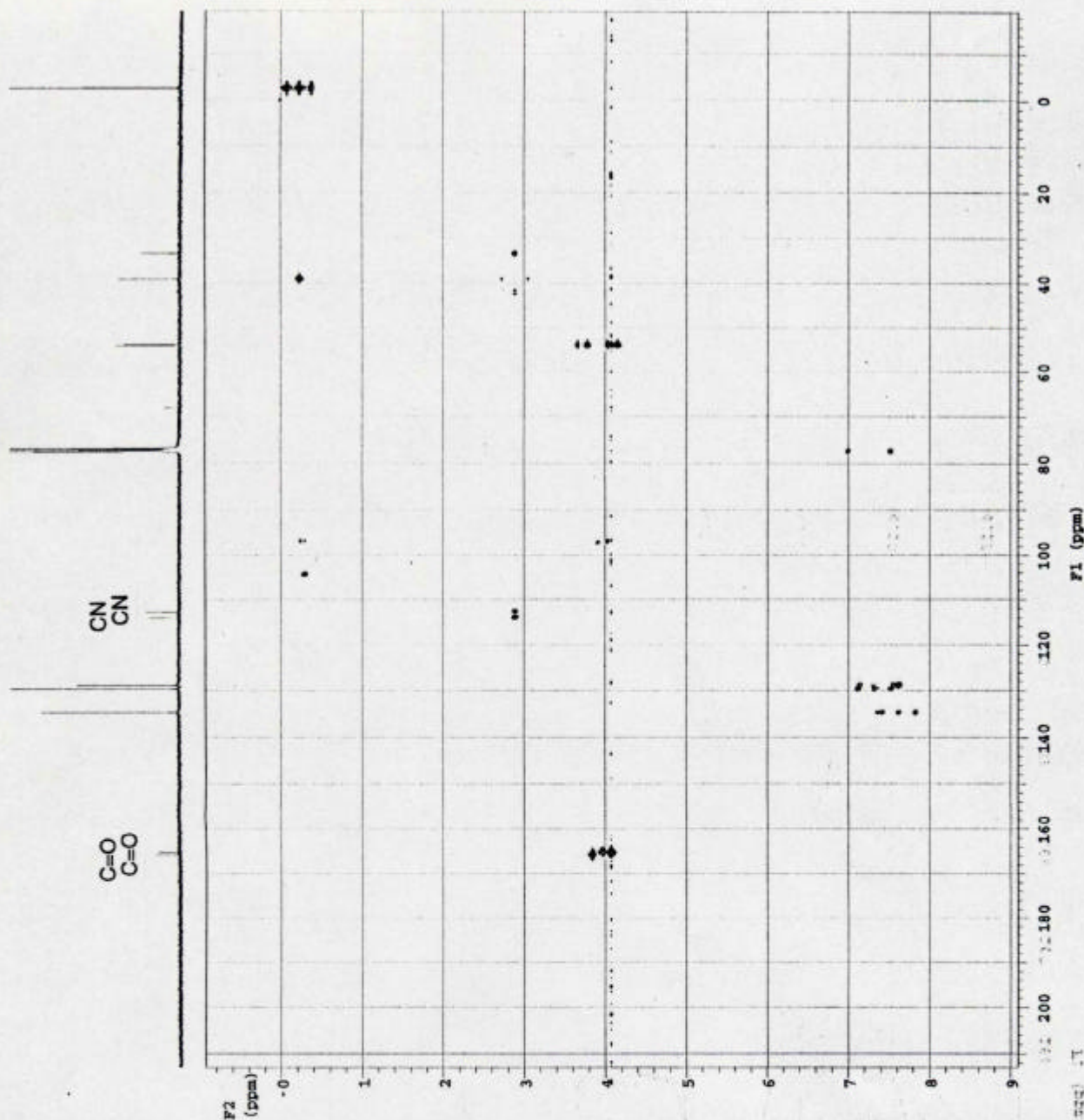
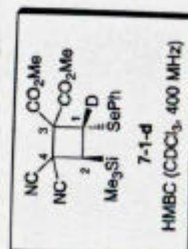
2



$\tau_k=5$



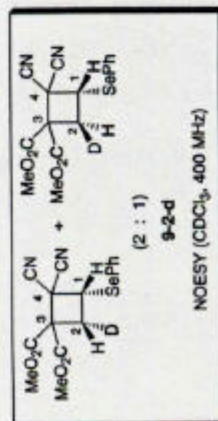
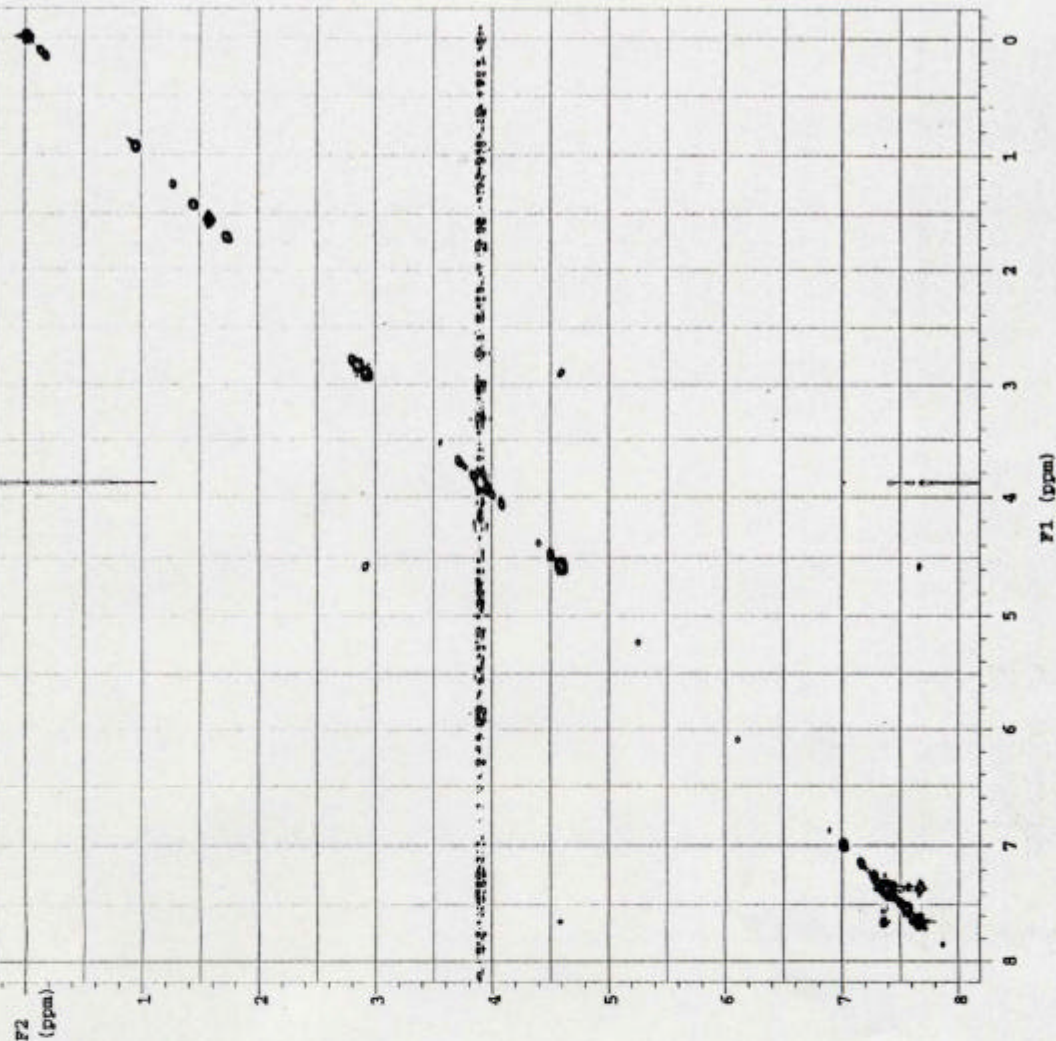
1989

[illegible]

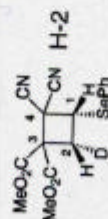
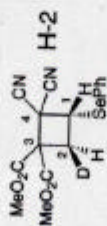
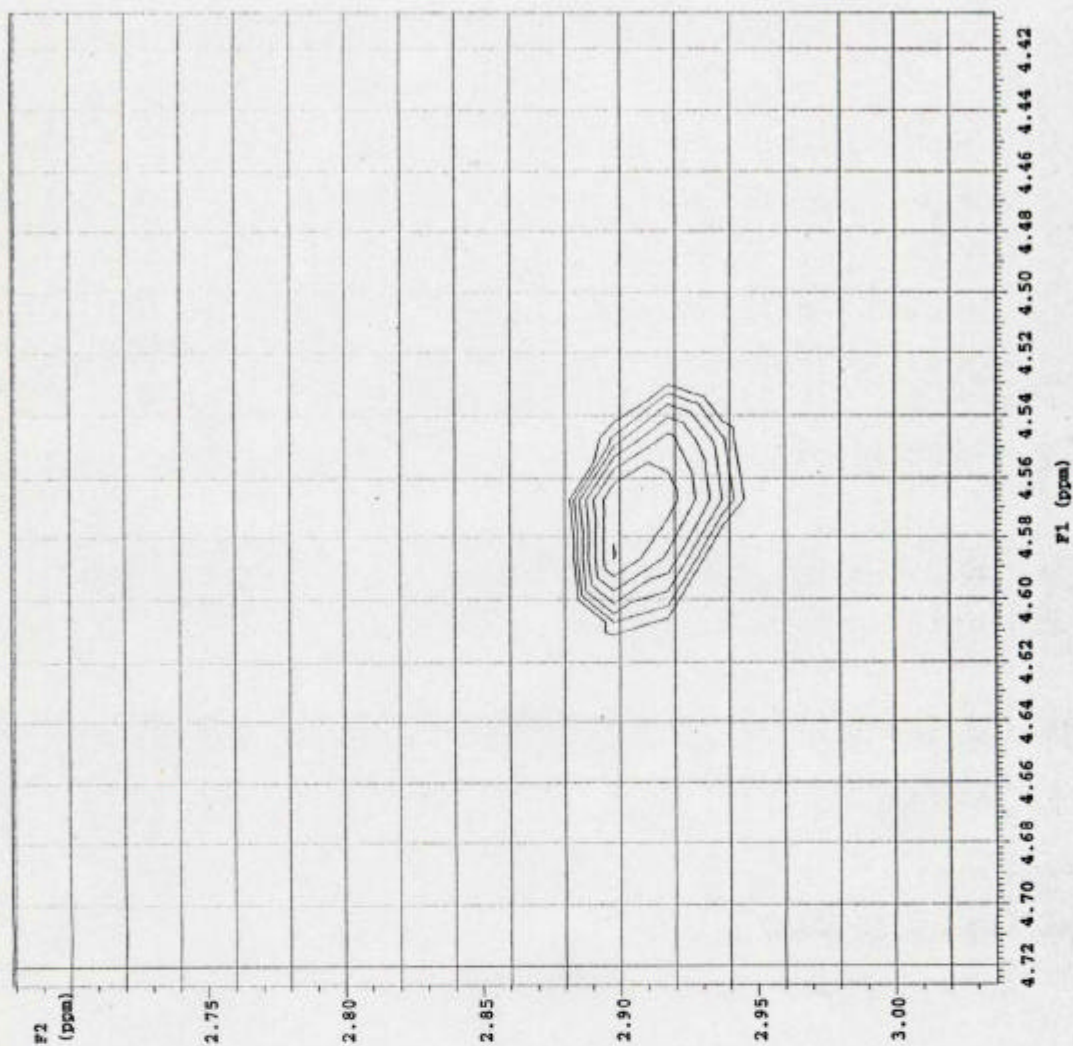
Cyclodextrin

exp7 nusey

SAMPLE DATE Jan 29 99 DEFC 359.944
 solvent CDCl3 dn HI 10
 file /export/home/~dper
 vnmr1/no/ymsae2/C- Acf
 yoldetac_mony dn n 1
 yoldetac_mony c 2
 ACQUISITION
 afeq 359.944 adf 200
 to HI dmec 1.0
 at 0.124 dmec 1.0
 up 1024 homo PROCESSING
 wv 4059.9
 fb 2000 gt 9.059
 ba 4 gfs not used
 ee 8 wfile
 tpr 61 proc ft
 pw 11.0 fn 1024
 dl 1.256 math z
 presat 0
 mix 1.200 warr
 tof -359.7 wexp
 at 40 wst
 ct 40 wst
 n 2D PROCESSING
 alock n 50 gfi 0.029
 gain FLAG 50 gfi not used
 ii y wfile
 la n proc ft
 qp y fn 1024
 la y
 n
 2D ACQUISITION
 wv 4059.9
 nl 256
 phase nusey
 DISPLAY
 sp -164.4
 wp 3376.6
 vs 500
 ac 19
 wc 200
 hnm 16.48
 ls 500.00
 rll 1516.4
 rfp 1142.8
 th 4
 lsa 100.000
 al p0
 2D DISPLAY
 ap1 -164.4
 wp1 3376.6
 ad1 9
 wd1 200
 rll1 1516.4
 rfp1 0



H-1



9-2-d
NOESY (CDCl₃, 400 MHz)