

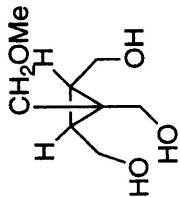
Meotriol

exp2 stdlh

```

SAMPLE          DEC. & VT
date Jul 11 00 dfrq 399.936
solvent CDC13 dn H1
file exp dpr 20
ACQUISITION    dof 0
sfrq 399.937 dm nmn
tn HI dm c
at 3.744 dmf 200
sv 44928 dseq
sw 5999.3 dres 1.0
fb 3000 homo
bs 16 PROCESSING
tpr 61 wfile
pw 5.5 proc ft
dl 1.256 fn not used
tof 600.0 math f
nt 16
ct 16 warr react
alock n warr procpilot
gain not used wbs
FLAGS          wnt
il n
in n
op y
hs nm
DISPLAY
sp -80.0
vp 4079.2
vs 214
sc 0
wc 380
hnm 10.74
ls 1097.24
rf1 384.7
rfp 0
th 20
ins 100.000
nm ph

```



10
¹H NMR (CDCl₃, 400 MHz)

