

Supplementary Information

Supramolecular Architecture of Tetrathiafulvalene Bridged Bis(β -Cyclodextrin) with Porphyrin and Its Photophysical Behaviors

Ying-Ming Zhang, Yong Chen, Rui-Jie Zhuang, Yu Liu*

*Department of Chemistry, State Key Laboratory of Elemento-Organic Chemistry, Nankai
University, Tianjin, 300071, P. R. China*

yuliu@nankai.edu.cn

Table of Contents.

¹ H NMR spectrum of 3	S3
¹³ C NMR spectrum of 3	S3
MALDI-TOF spectrum of 3	S4
2D NOESY spectrum of 3	S4
¹ H NMR titration of 3	S5
Job's plot of the 3/4 system.....	S5
2D ROESY spectrum of 3/4 complex.....	S6
TEM and AFM images of the linear assembly	S7

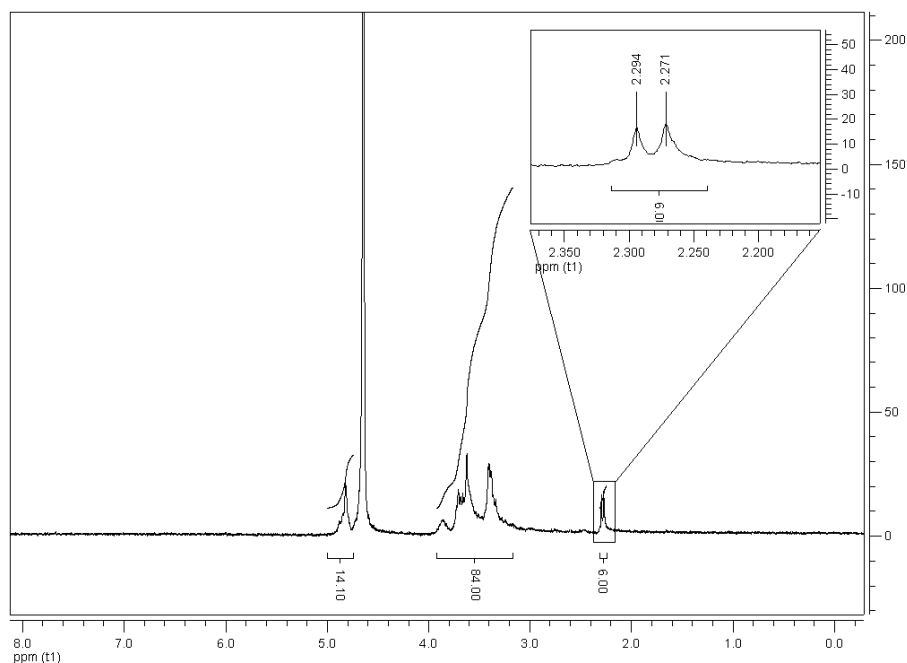


Figure S1. ^1H NMR (400 MHz, D_2O , ppm) spectrum of **3**. Inset: Magnified area of $-\text{SCH}_3$ protons.

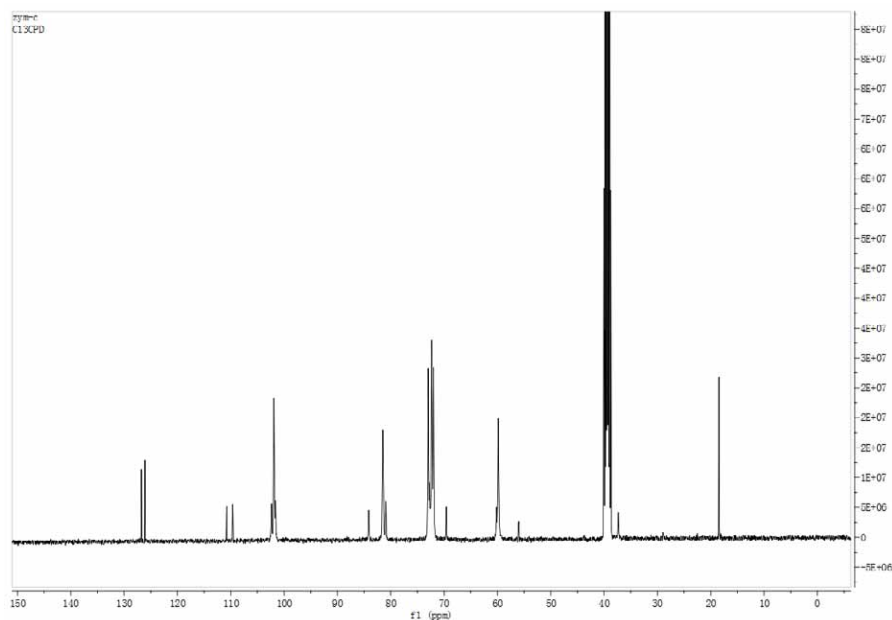


Figure S2. ^{13}C NMR (100 MHz, $\text{DMSO}-d_6$, ppm) spectrum of **3**.

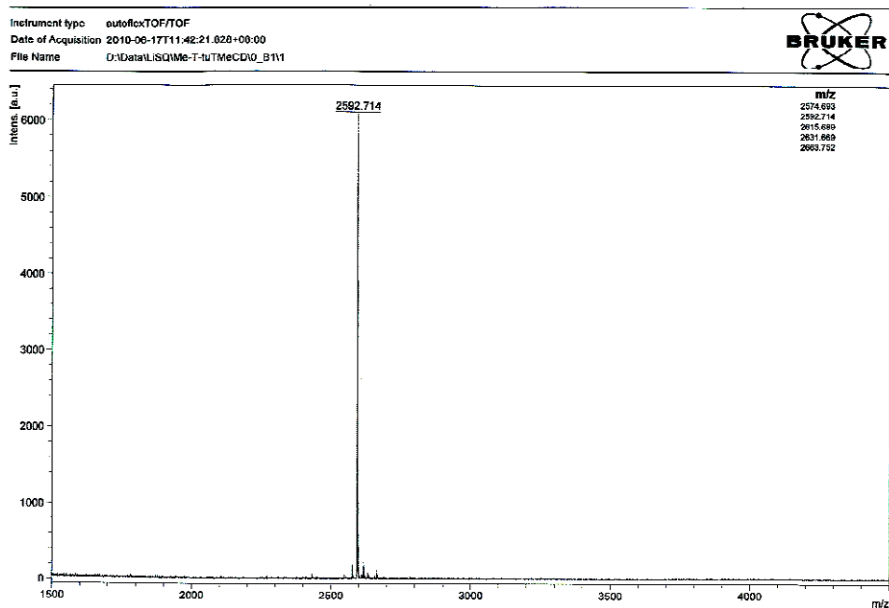


Figure S3. MALDI-TOF spectra of **3**.

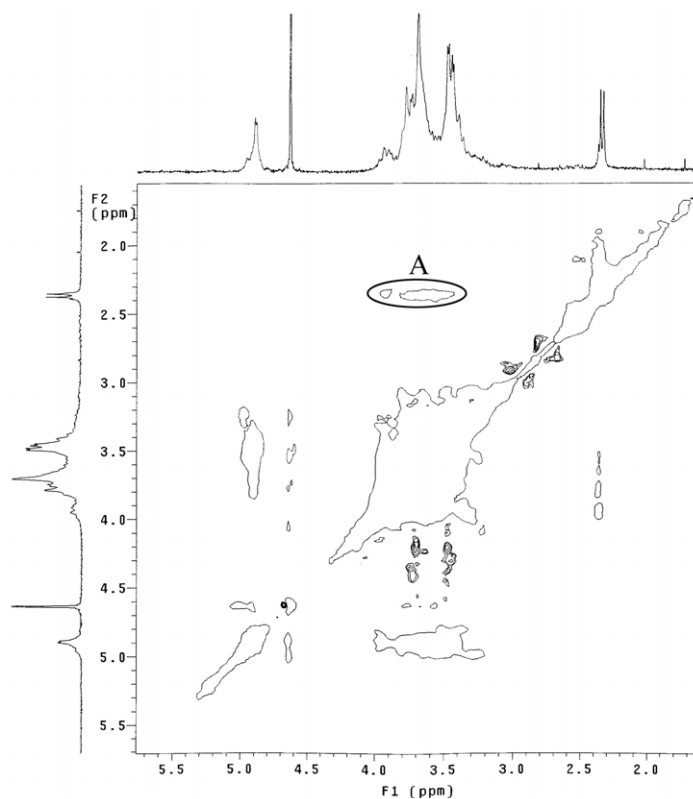


Figure S4. 2D NOESY spectrum (300 MHz) of **3** ($[3] = 1.0 \times 10^{-3}$ M) in D_2O at 25 °C. Peaks A

corresponded to the NOE cross-peaks between -SCH₃ and CDs.

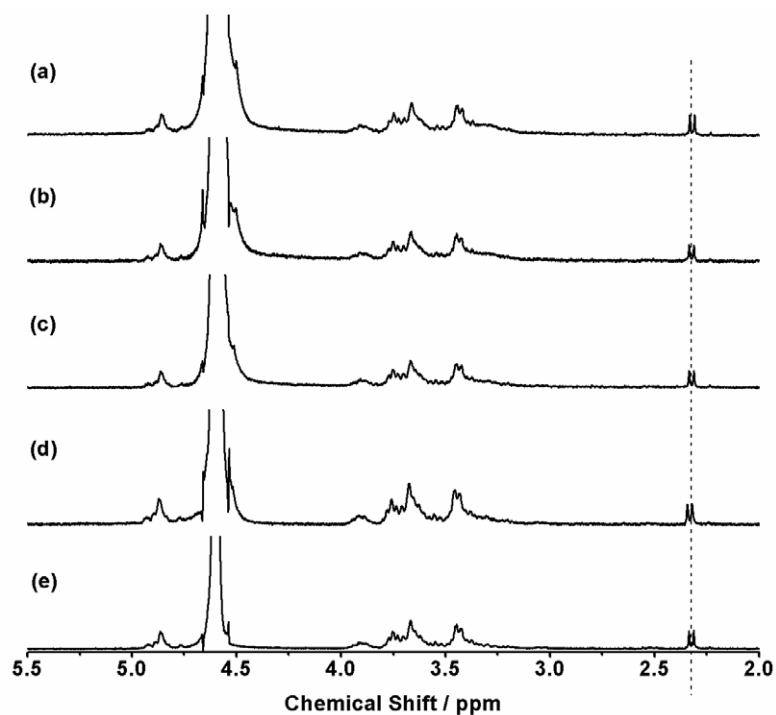


Figure S5. ¹H NMR titration of **3** ($3.1\text{--}9.5 \times 10^{-4}$ M, from a to e) in D₂O at 25 °C.

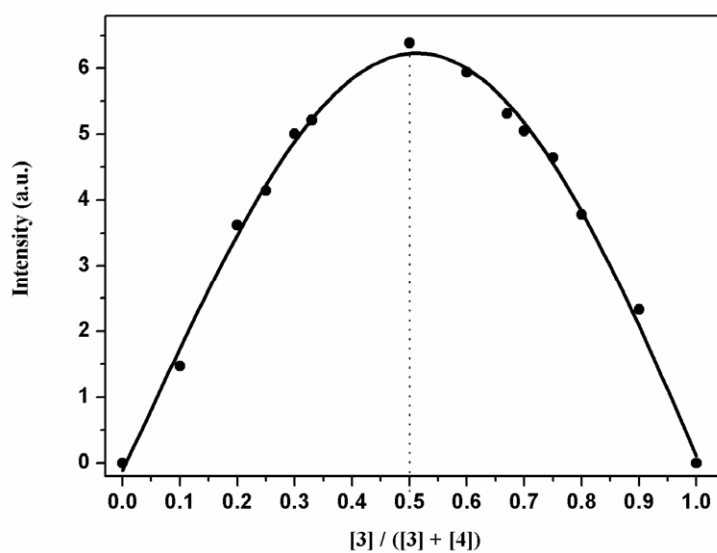


Figure S6. Job's plot of the **3/4** system in NaH₂PO₄-Na₂HPO₄ buffer solution (pH 7.2) at 643 nm.

([**3**] + [**4**] = 1×10^{-5} M, $\lambda_{\text{ex}} = 422$ nm).

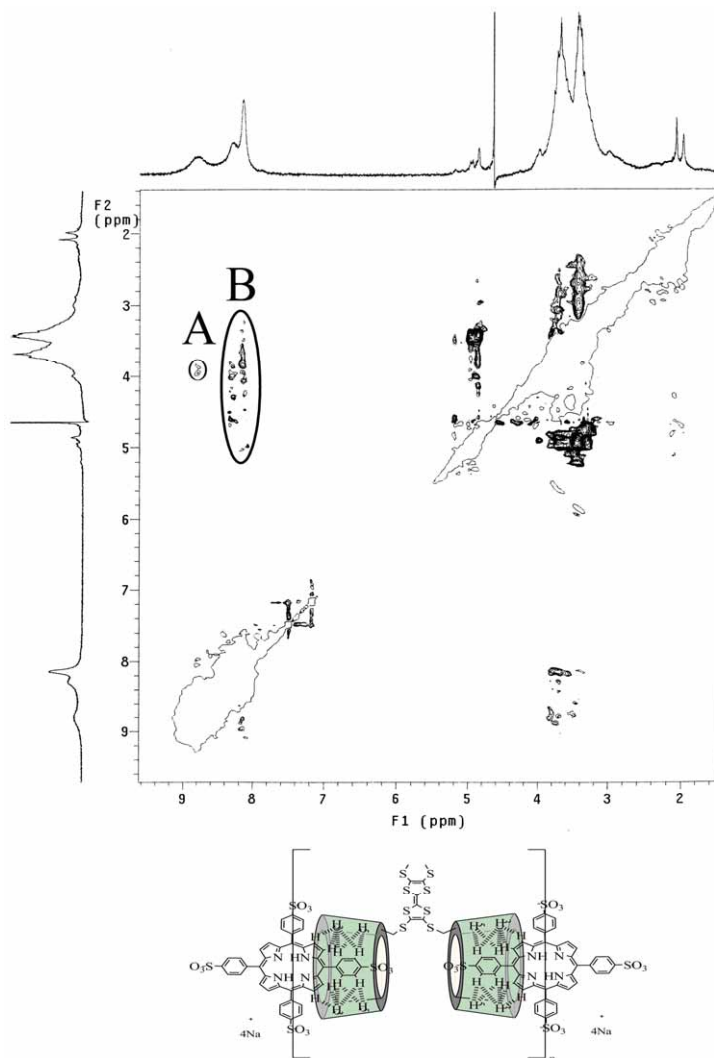


Figure S7. 2D ROESY spectrum (300 MHz) of a mixture of **3** and **4** ([**3**] = [**4**] = 1.0×10^{-3} M) in D₂O at 25 °C. Peaks A and B corresponded to the NOE cross-peaks between porphyrins and CDs.

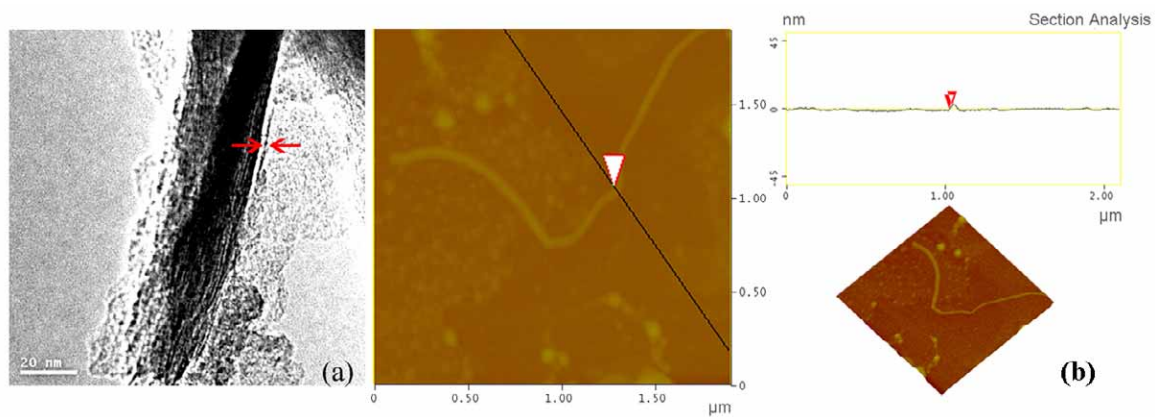


Figure S8. TEM (a) and AFM (b) images of the linear assembly.