

Supplementary Information for:

Construction of mixed micelle with cross-linked core and dual responsive shells

Cong Chang, Hua Wei, Qian Li, Bin Yang, Ni Chen, Jin-Ping Zhou,

Xian-Zheng Zhang,^{*} and Ren-Xi Zhuo

*Key Laboratory of Biomedical Polymers of Ministry of Education & Department of
Chemistry, Wuhan University, Wuhan 430072, P. R. China*

^{*} *E-mail: xz-zhang@whu.edu.cn; Fax/Tel: +86-27-68754509*

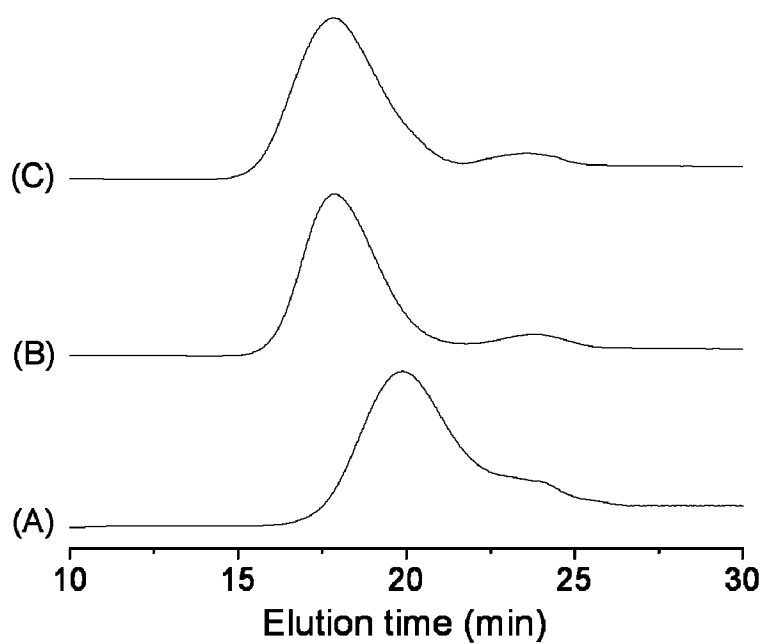


Fig. S1. SEC traces of (A) P(MMA_{285-co}-MPMA₅), (B) P(MMA_{285-co}-MPMA₅)-*b*-PNIPAAm₃₅₁, and (C) P(MMA_{285-co}-MPMA₅)-*b*-PDEA₂₉₀.