

Supporting Information

Hierarchical Self-Assembly and Secondary Structures of Linear Polypeptides Graft onto POSS in the Side Chain through Click Chemistry

Yung-Chih Lin and Shiao-Wei Kuo*

Department of Materials and Optoelectronic Science, Center for Nanoscience and Nanotechnology, National Sun Yat-Sen University, Kaohsiung, 804, Taiwan.

Correspondence to: Shiao-Wei Kuo (Email: kuosw@faculty.nsysu.edu.tw)

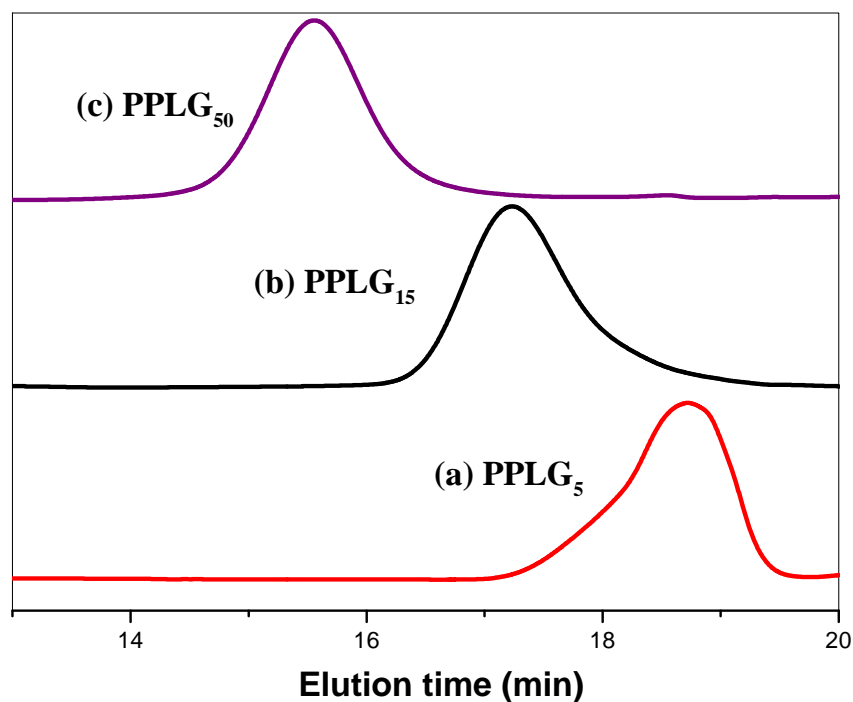


Figure S1: GPC traces of (a), PPLG₅, (b) PPLG₁₅, (c) PPLG₅₀

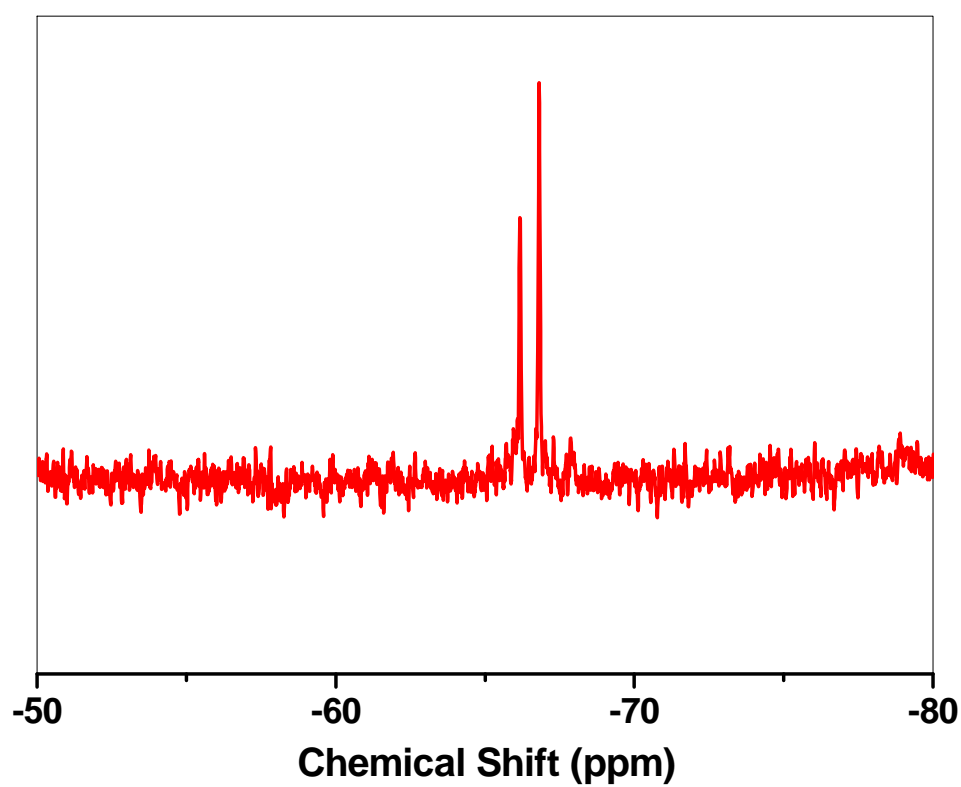


Figure S2: ^{29}Si NMR spectra of (a) PPLG₅-g-POSS.

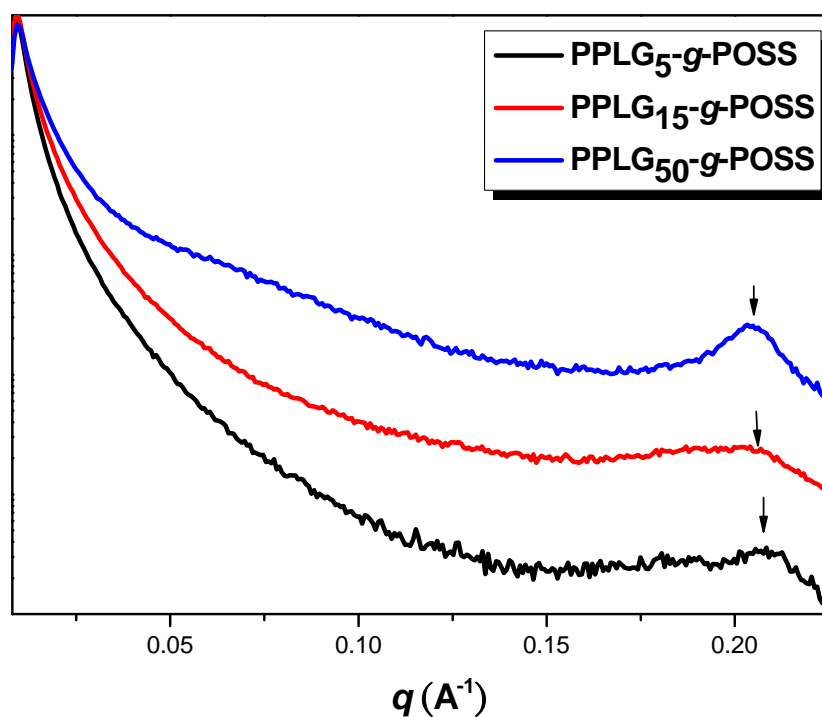


Figure S3: SAXS patterns (recorded at 393 K) of PPLG-*g*-POSS species incorporating different degrees of polymerization.