

Figure S1. Two-dimensional homonuclear ^1H COSY (a) and ^1H NOESY (b) NMR spectra of PMEP in CDCl_3 . One-dimensional ^1H NMR spectra appear above and to the left to aid interpretation.

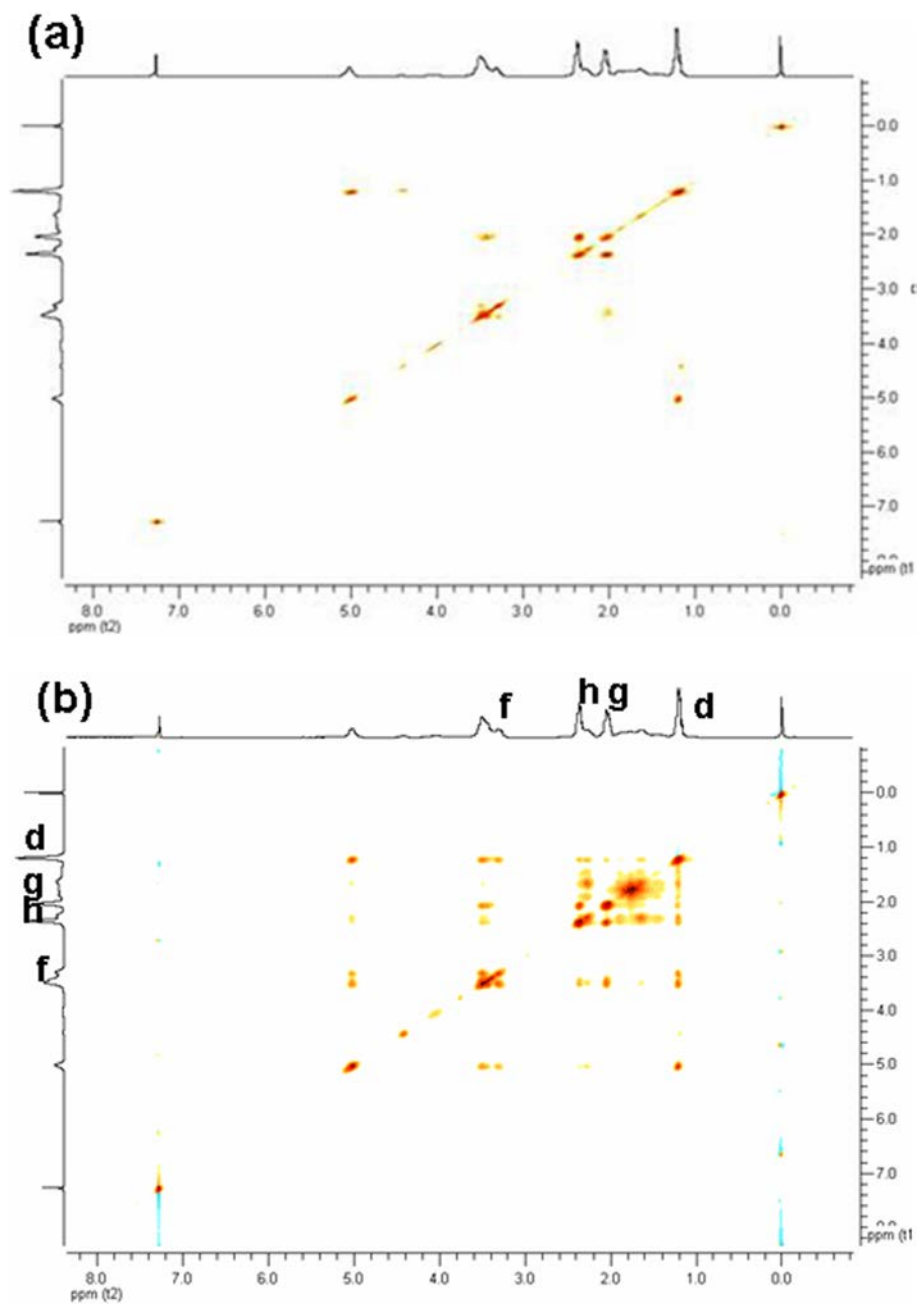


Figure S2. Two-dimensional homonuclear ^1H COSY (a) and ^1H NOESY (b) NMR spectra of PAPP in CDCl_3 . One-dimensional ^1H NMR spectra appear above and to the left to aid interpretation.