

Figure S1. (a) ^1H NMR spectrum of (top) crude I-TP_{3a} and (b) precipitated I-TP_{7a} (bottom)

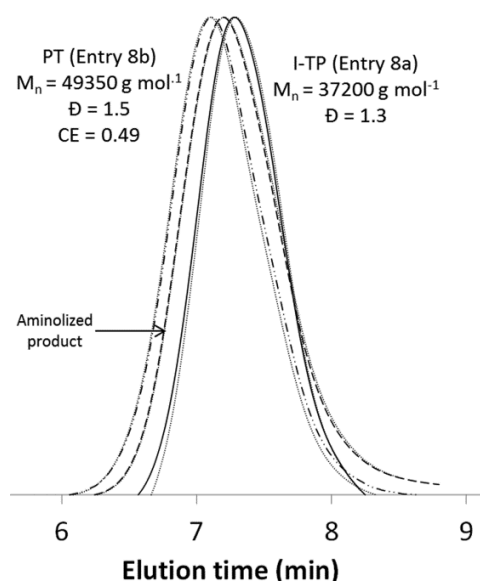


Figure S2. SEC traces of poly(butyl acrylate-*b*-styrene) I-TP_{8a}, its corresponding PT_{8b} and the aminolized product PT_{8b}

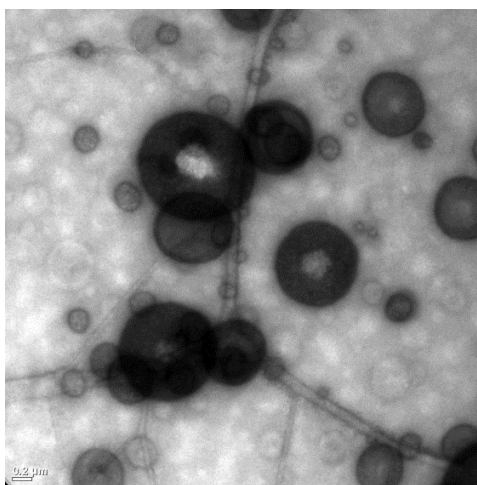


Figure S3. TEM, analysis of block copolymer in Entry 6c