

Electronic Supplementary Information

Polymer Electrolyte Membranes Based on Poly(*m*-phenylene)s with Sulfonic Acid via Long Alkyl Side Chains

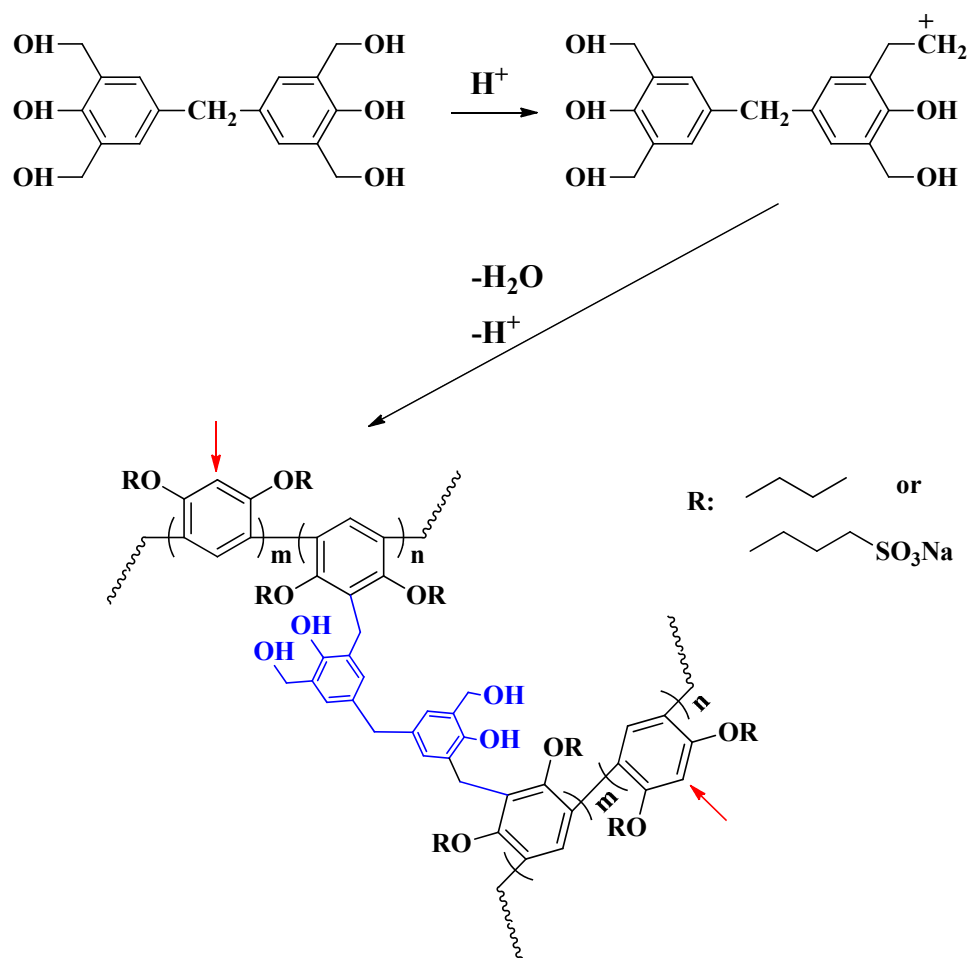
Xuan Zhang, Li Sheng, Tomoya Higashihara*, and Mitsuru Ueda*

Department of Organic and Polymeric Materials, Tokyo Institute of Technology,

2-12-1-H120, O-okayama, Meguro-ku, Tokyo 152-8552, Japan.

Fax: +81-3-5734-2127, E-mail: thigashihara@polymer.titech.ac.jp;

ueda.m.ad@polymer.titech.ac.jp



Scheme S1 Structures of **c-SPMPs** (red arrows: possible cross-linking sites).