

Supporting Information

Table S1: Found and calculated C,H,N elemental composition of the networks

	C(%)	H(%)	N(%)
PImin			
exp	81.04	4.61	12.15
calc	82.05	4.72	13.20
PImCl			
exp	64.31	4.97	7.02
calc	71.41	4.22	10.75
PNHC			
exp	79.83	4.34	10.21
calc	83.04	4.46	12.50
PCuNHC			
exp	70.31	3.24	10.65
calc*	64.87	3.51	9.76

*calculated for a completely Cu-coordinated network

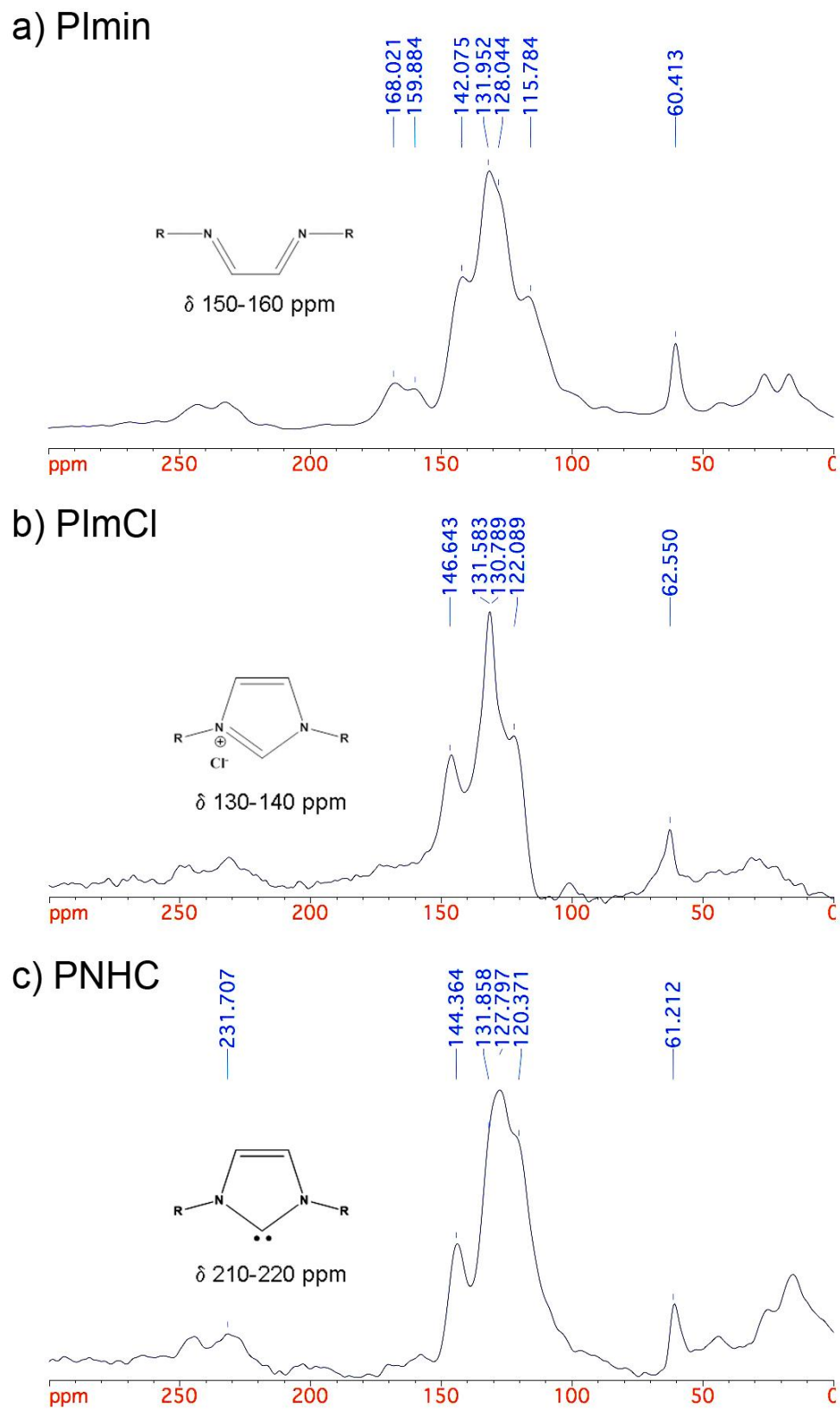
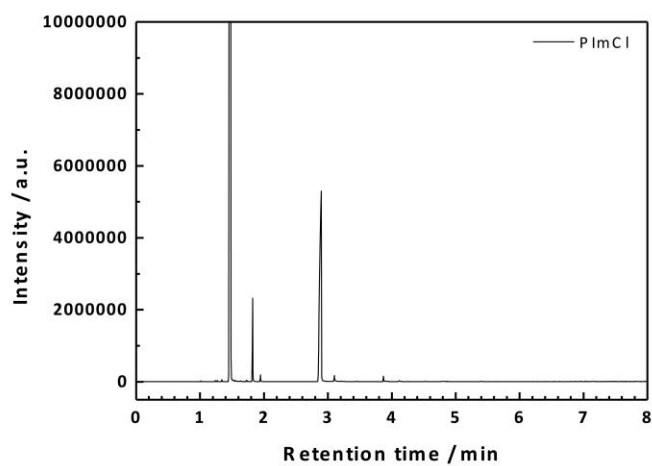


Figure S1: ^{13}C CP-MAS NMR spectra of PImin, PImCl and PNHC with the relevant molecule units.

a) PImCl



b) PNHC

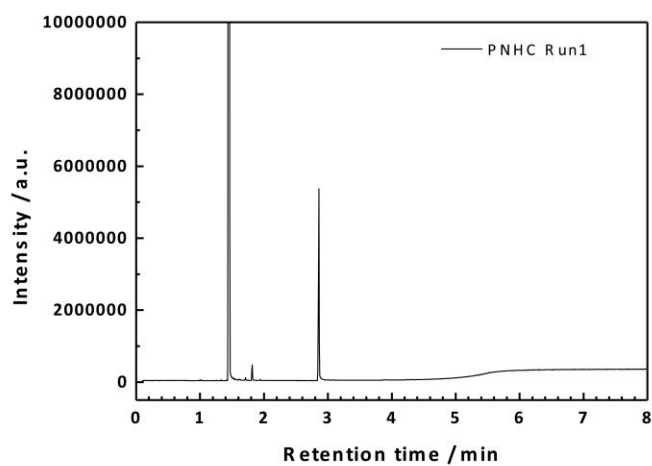


Figure S2: Representative GC-MS data obtained after cycloaddition of CO₂ over PImCl and PNHC with epichlorohydrin