

pH-Responsive high internal phase emulsions stabilized by core cross-linked star (CCS) polymers

Supporting Information

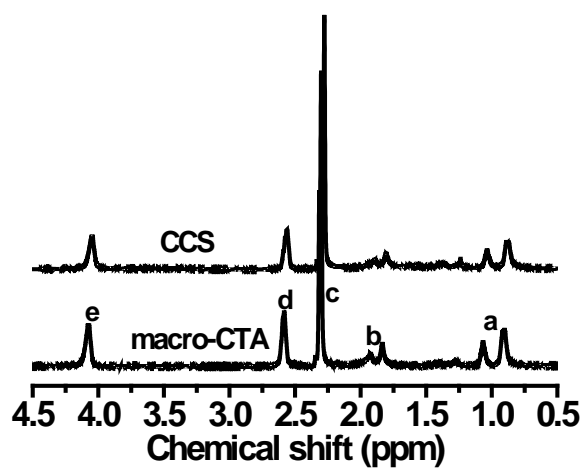


Fig. S1 ¹H NMR spectra in CDCl₃ of the PDMAEMA macro-CTA and PDMAEMA CCS polymer.

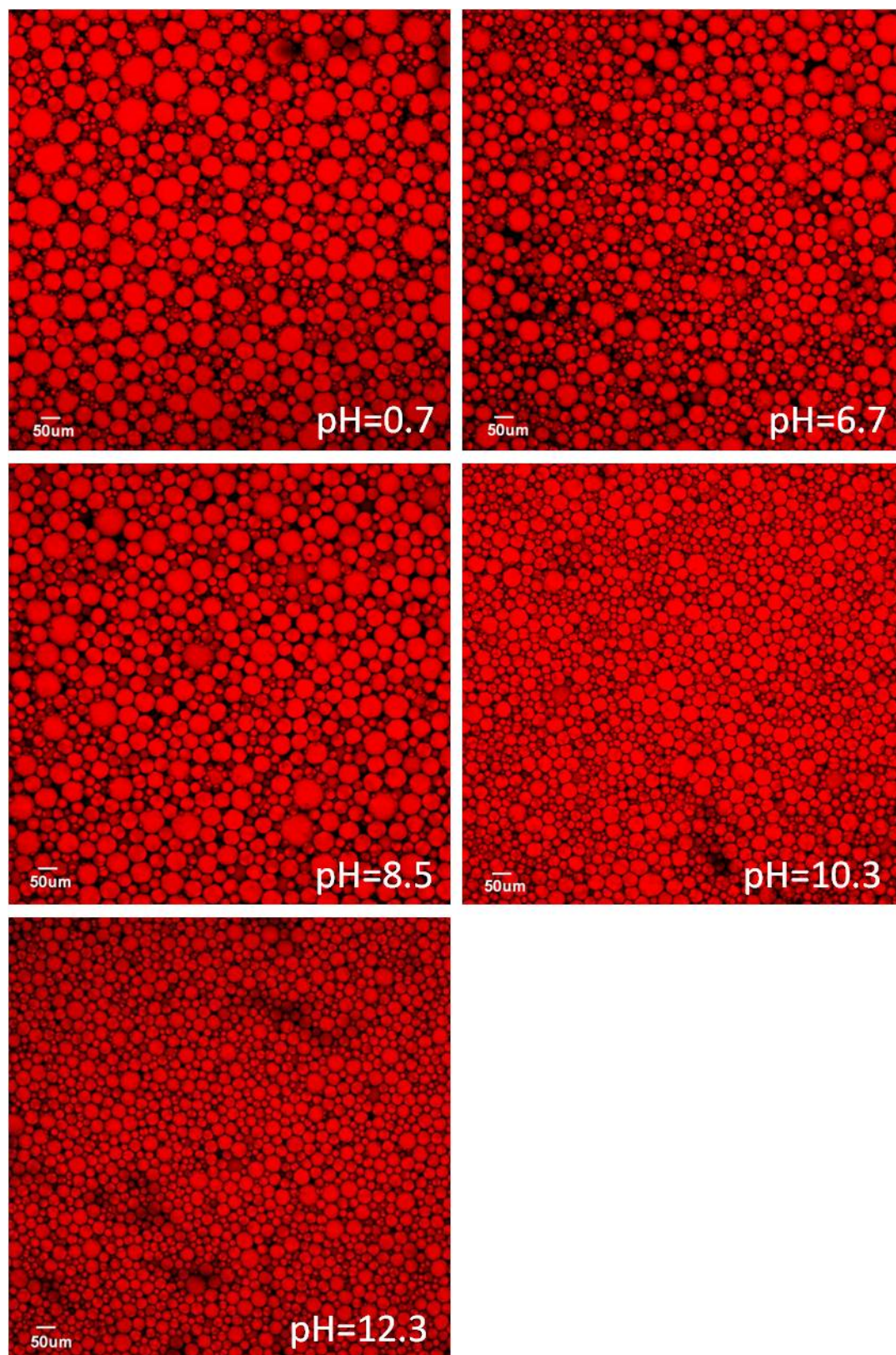


Fig. S2 CLSM images of HIPEs (0.5 wt% CCS solution, 80 vol% oil) at different pH values. All the scale bars are 50 μm.