

Supporting Information

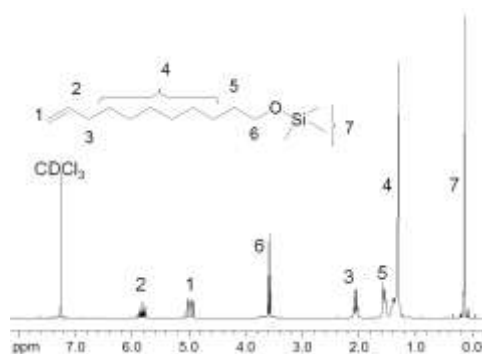


Fig. S1 ^1H NMR spectrum of $\text{H}_2\text{C}=\text{CH}(\text{CH}_2)_9\text{-OSiMe}_3$.

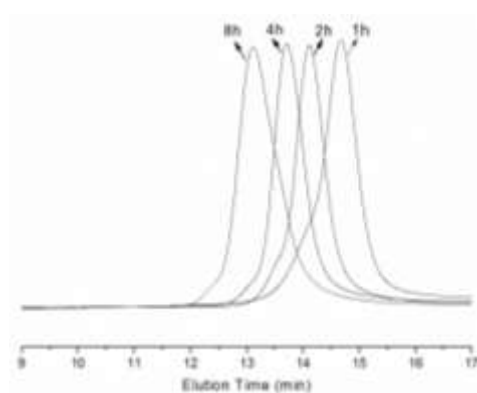


Fig. S2 GPC elution curves of poly(ethylene-co-10-undecen-1-ol)s obtained at different times (EU1, EU4, EU5 and EU6 in Table 1).

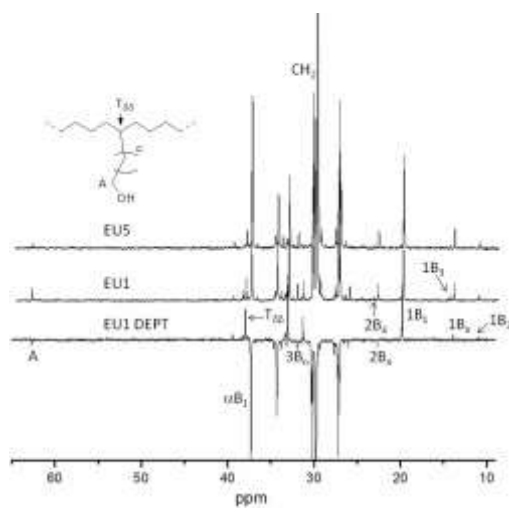
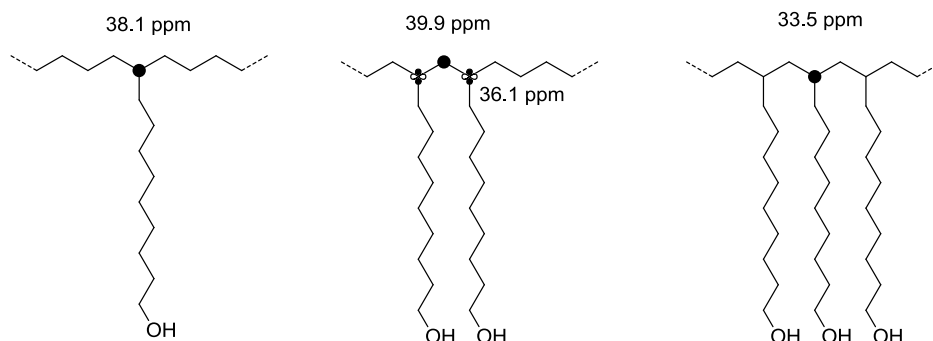


Fig. S3. ^{13}C NMR and DEPT spectra of the poly(ethylene-co-10-undecen-1-ol)s (EU1, EU5 in Table 1).

Table S1 Main Chemical shifts and assignments of ^{13}C NMR.^{1,2}

Chemical shift (ppm)	Assignment
11.10	1B ₂
14.12	1B _n
14.65	1B ₃
20.04	1B ₁
22.92	2B _n
23.37	2B ₄
32.23	3B _n
37.29	αB_1
38.11	T _{$\delta\delta$}

Scheme S1 Microstructure unit of incorporation of 10-undecen-1-ol in PE chain⁴⁻⁶



References

- 1 Galland, G. B.; de Souza, R. F.; Mauler, R. S.; Nunes, F. F. *Macromolecules*, 1999, **32**, 1620.
- 2 Kunrath, F. A.; Monta, E. F.; Casagrande, O. L.; Mauler, R. S.; de Souza, R. F. *Macromol. Chem. Phys.*, 2002, **203**, 2407.

- 3 Carone, C. L. P.; Crossetti, G. L.; Basso, N. R. S.; Moraes, A. G. O.; Dos Santos, J. H. Z.; Bisatto, R.; Galland, G. B. *J. Polym. Sci., Part A: Polym. Chem.* 2007, **45**, 5199.
- 4 Xu, B. C.; Hu, T.; Wu, J. Q.; Hu, N. H.; Li, Y. S. *Dalton Trans.* 2009, 41, 8854.
- 5 Imuta, J.; Toda Y.; Kashiwa, N. *Chem. Lett.* 2001, **7**, 710.
- 6 Kashiwa, N.; Matsugi, T.; Kojoh, S.; Kaneko, H.; Kawahara, N.; Matsuo, S.; Nobori, T.; Imuta, J. *J. Polym. Sci., Part A: Polym. Chem.* 2003, **41**, 3657.