

Supplementary Information

Functional films from unsaturated poly(macrolactones) by thiol-ene cross-linking and functionalisation

Zeliha Ates, Andreas Heise*

School of Chemical Sciences, Dublin City University, Dublin 9, Ireland. Fax: 00353 (0)1 700 5503; Tel: 00353 (0)1 7006709; E-mail: andreas.heise@dcu.ie

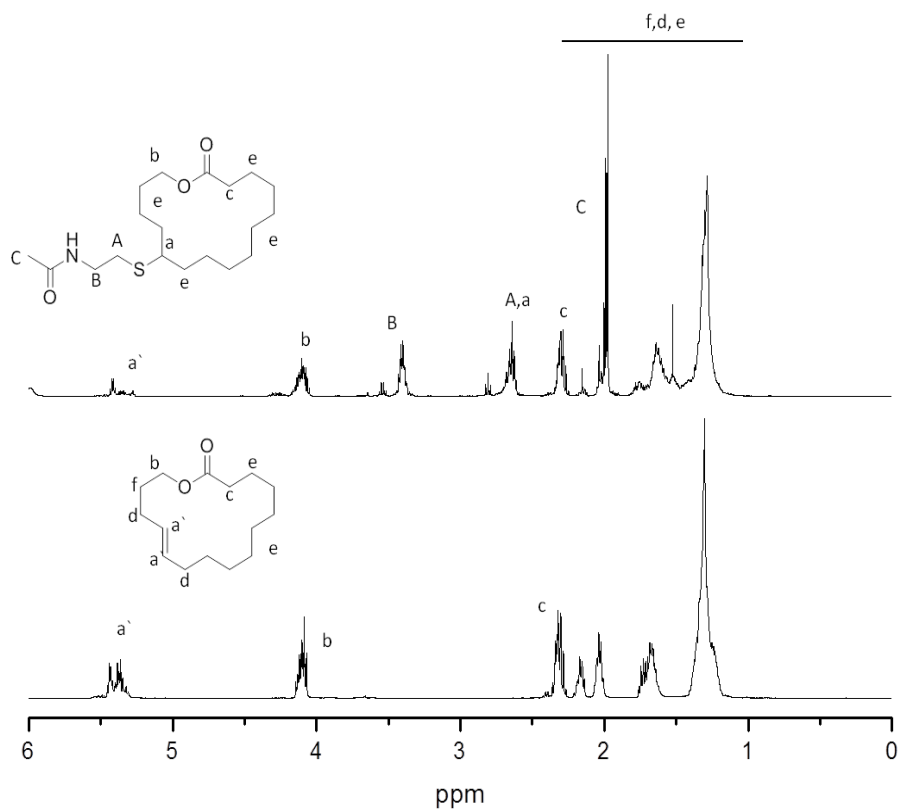


Figure S1: ¹H NMR spectra of Globalide (GI) and the thiol-ene coupling product from nACA and GI (unpurified product). Spectra recorded in CDCl₃ using a 400 MHz spectrometer. Thiol-ene coupling yield calculated as 55%.

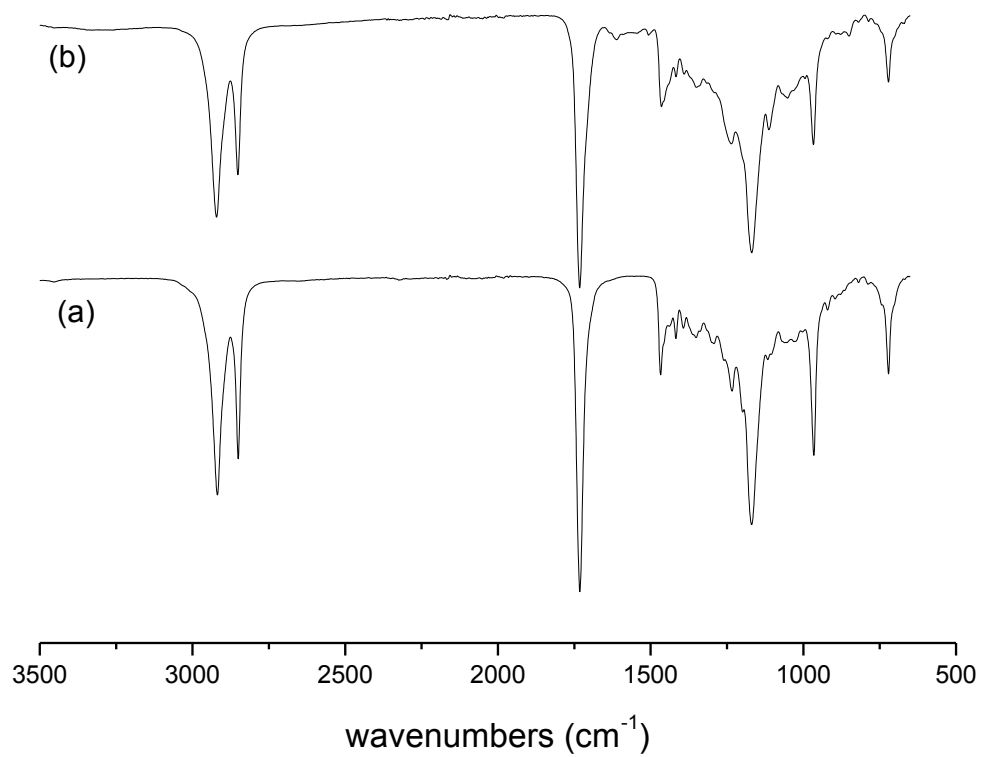


Figure S2: ATR-IR spectra of (a) Cross-linked PGI and (b) FITC coupled to amine functional cross-linked PGI showing no unbound FITC peak around 2100 cm⁻¹ after washing).