

Supporting information

Co-delivery of 5-fluorocytosine and cytosine deaminase into glioma cells mediated by an intracellular environment-responsive nanovesicle

Lu Wang[†], Yuanyuan Yuan[†], Shudong Lin, Du Cheng, Xiaoying Wang, Qing Jiang, Xintao Shuai*

PCFM Lab of Ministry of Education, School of Chemistry and Chemical Engineering, Sun Yat-sen University, Guangzhou, Guangdong 510275, China.

[†]These authors contributed equally to this work.

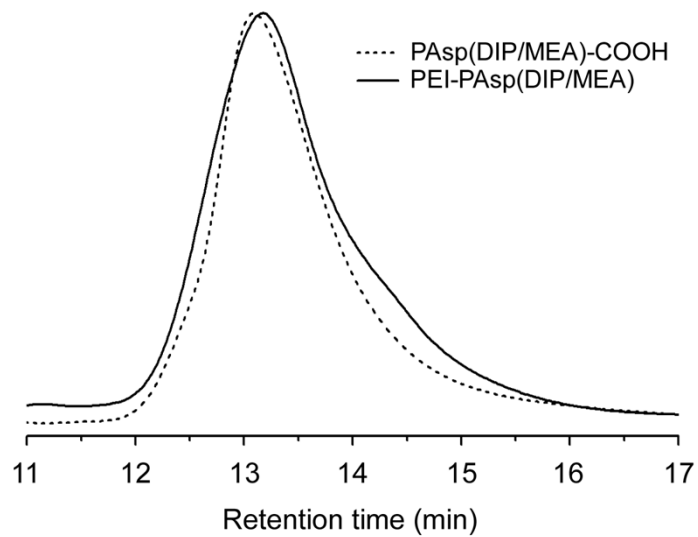
** Correspondence should be addressed to:*

Xintao Shuai

Tel.: +86-20-84110365

Fax: +86-20-84112245;

E-mail: shuaixt@mail.sysu.edu.cn



Name	M_{NMR}/kDa	M_n/kDa	Polydispersity
PAsp(DIP/MEA)-COOH	10.9	12.2	1.47
PEI-PAsp(DIP/MEA)	11.5	13.3	1.49

Fig. S1 GPC curves of PAsp(DIP/MEA)-COOH and PEI-PAsp(DIP/MEA) in DMF containing LiBr (1g/L) at a flow rate of 1.0 mL/min.

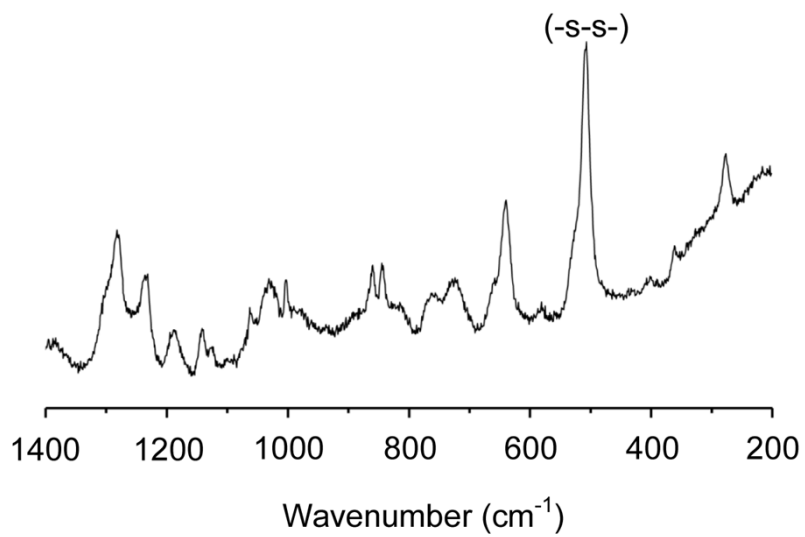


Fig. S2 Raman spectrum of the vesicle based on PEI-PAsp(DIP/MEA) clearly showing the formation of disulfide bonds.

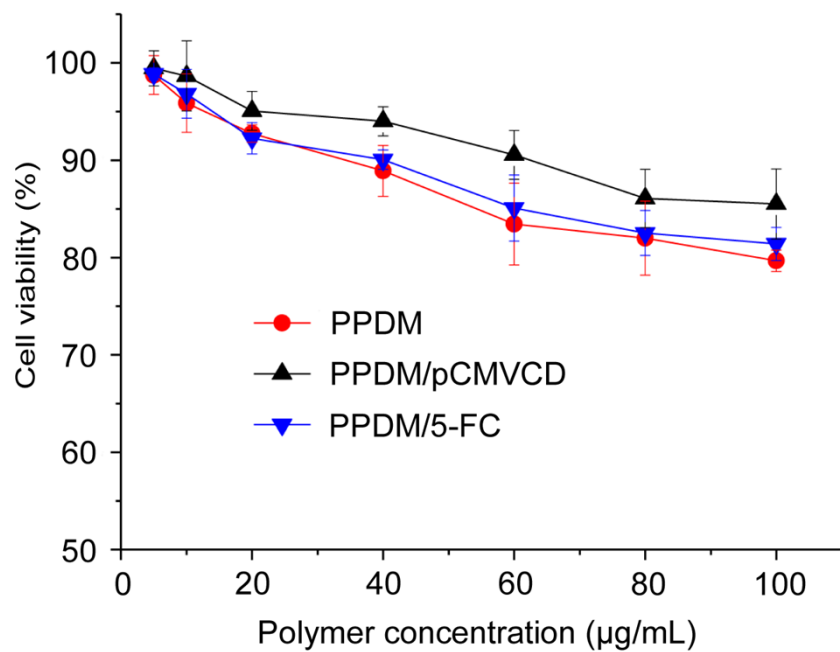


Fig. S3 Viability of C6 cells in the presence of nanocomplexes encapsulating single therapeutic agent in comparison with empty carrier. Data are presented as mean±SE (n=3).

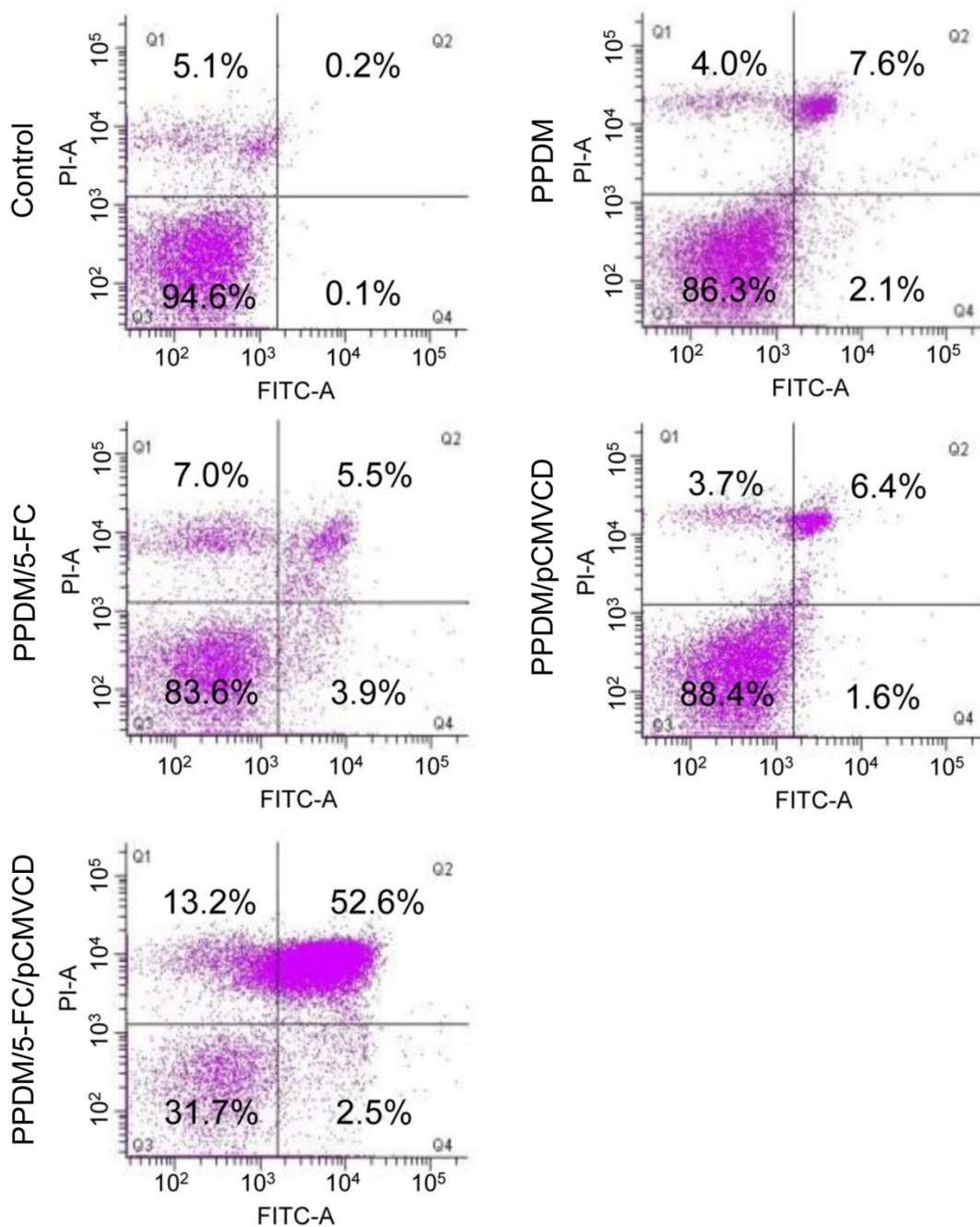


Fig. S4 The percentage of apoptotic cells quantified by Annexin-V-FITC and PI flow cytometry (Q1: necrotic cells; Q2: late apoptotic cells; Q3: normal viable cells; Q4: early apoptotic cells.). Images show cells incubated with: PPDM, PPDM/5-FC, PPDM/pCMVCD, PPDM/5-FC/pCMVCD, respectively. Data are given as mean \pm SE (n=3).