

(Electronic Supplementary Information for *Polymer Chemistry*)

## **Biostable and bio-reducible polymersomes for intracellular delivery of doxorubicin**

Thavasyappan Thambi,<sup>a</sup> V.G. Deepagan,<sup>a</sup> Yung Doug Suh,<sup>ab</sup> Gi-Ra Yi,<sup>a</sup>  
Jun Young Lee,<sup>a</sup> Doo Sung Lee,<sup>a</sup> and Jae Hyung Park<sup>\*abc</sup>

<sup>a</sup>School of Chemical Engineering, College of Engineering,  
Sungkyunkwan University, Suwon 440-746, Republic of Korea

<sup>b</sup>NanoBio Fusion Research Center, Korea Research Institute of Chemical Technology, Daejeon  
305-600, Republic of Korea

<sup>c</sup>Department of Health Sciences and Technology, SAIHST, Sungkyunkwan University, Suwon  
440-746, Republic of Korea

\*Corresponding author:

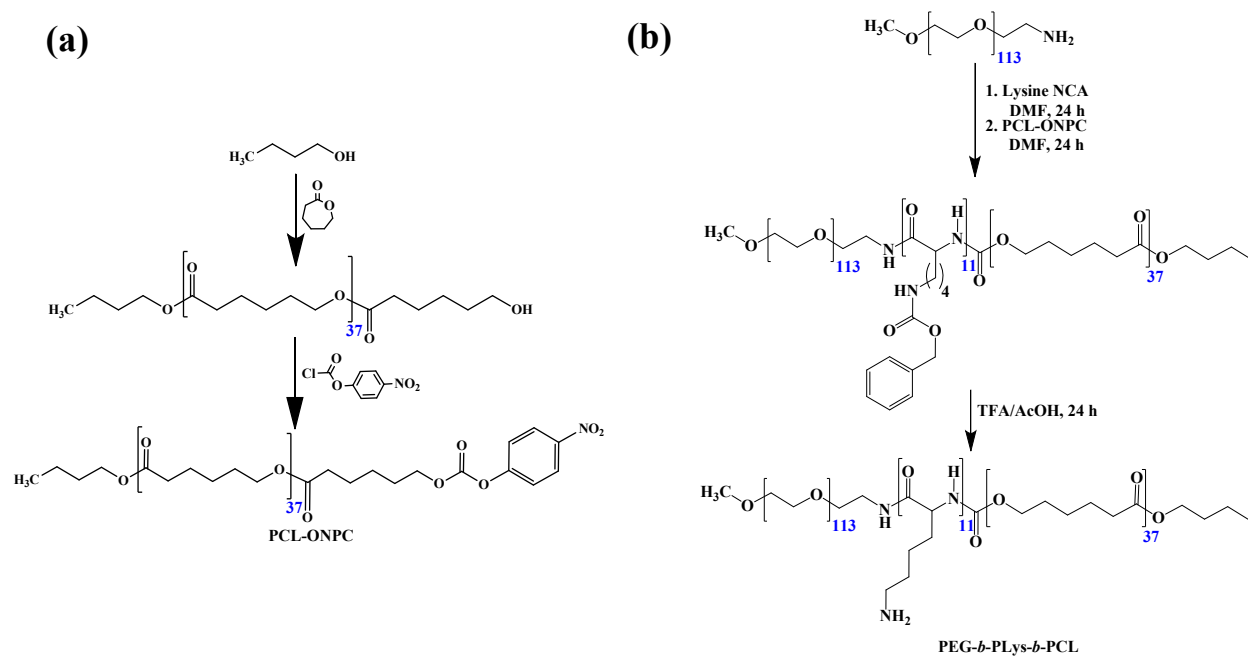
Jae Hyung Park, Ph.D.

Departments of Polymer Science and Chemical Engineering

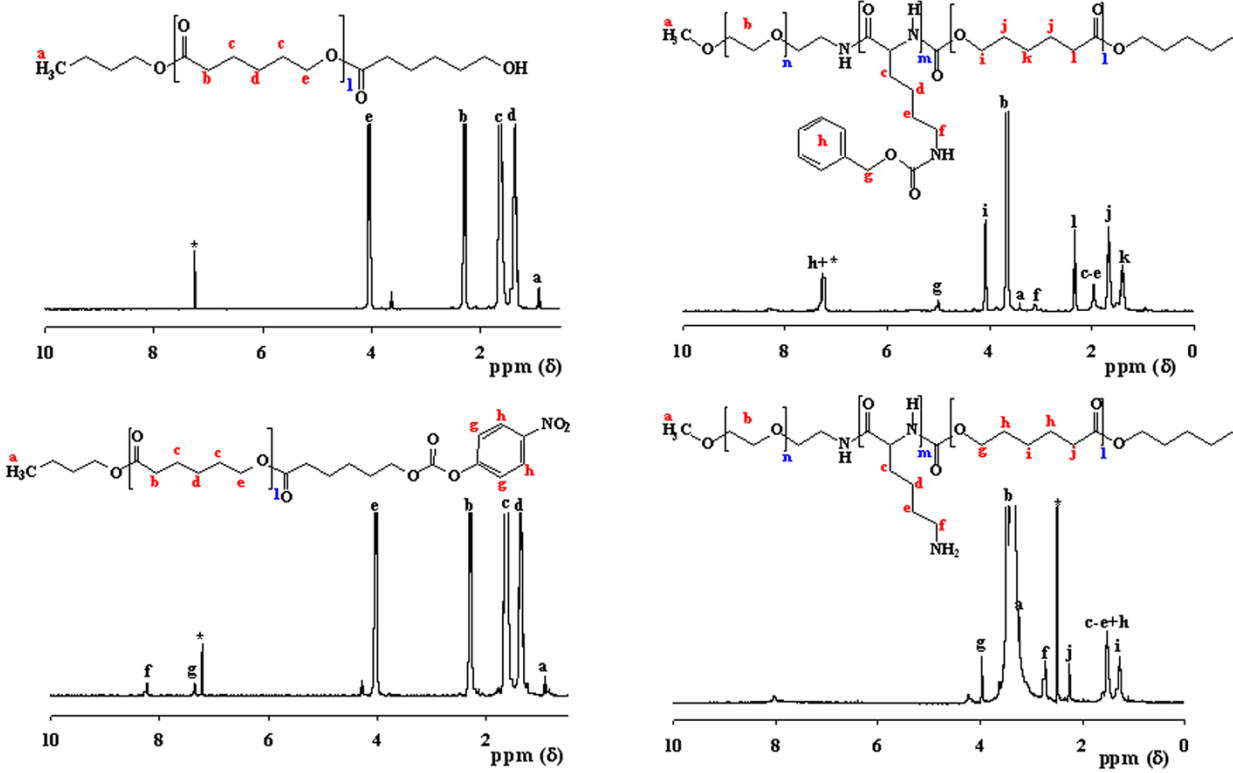
College of Engineering

Sungkyunkwan University, Suwon 440-746, Republic of Korea

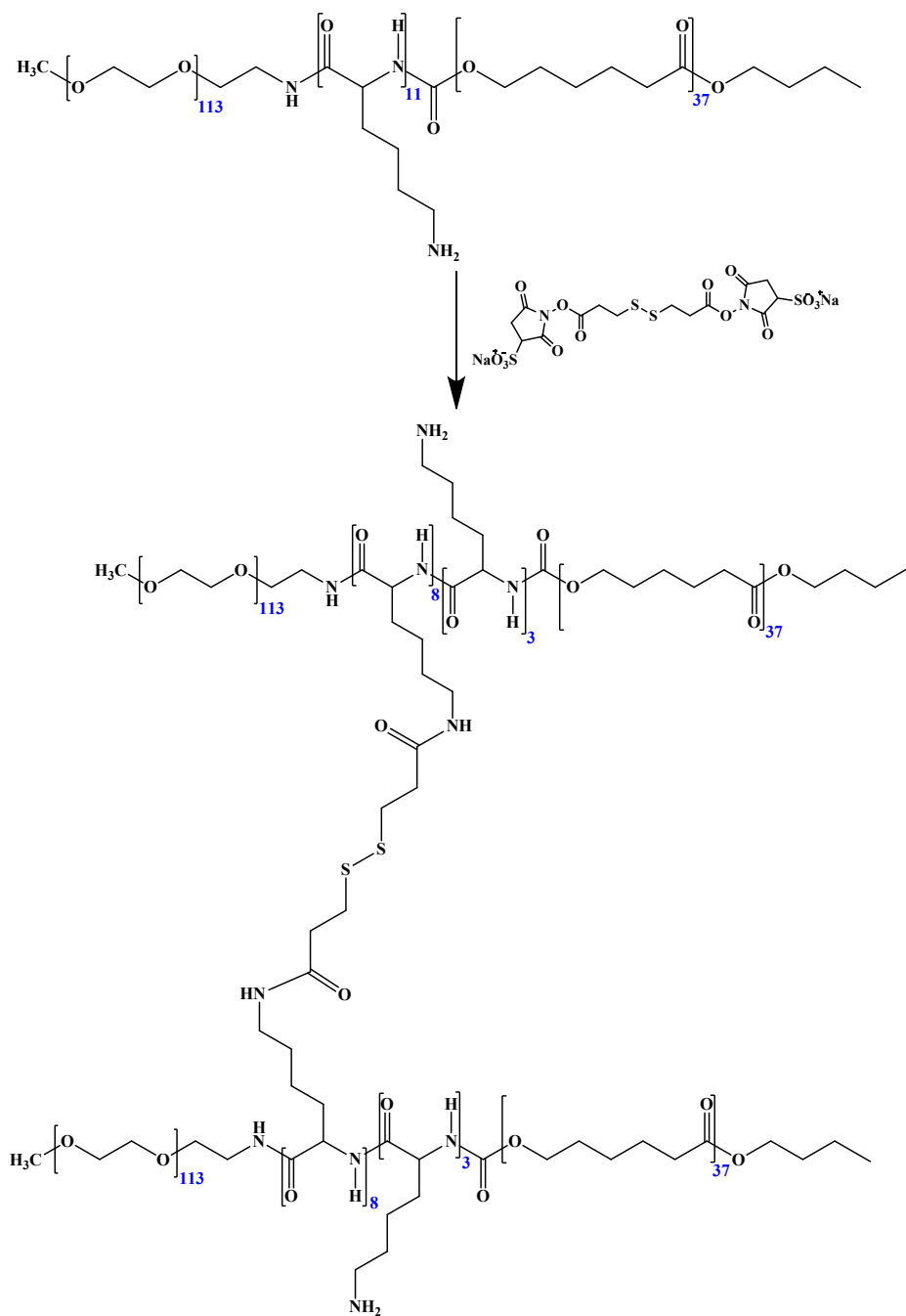
Tel: +82-31-290-7288; fax: +82-31-299-6857; e-mail: [jhpark1@skku.edu](mailto:jhpark1@skku.edu)



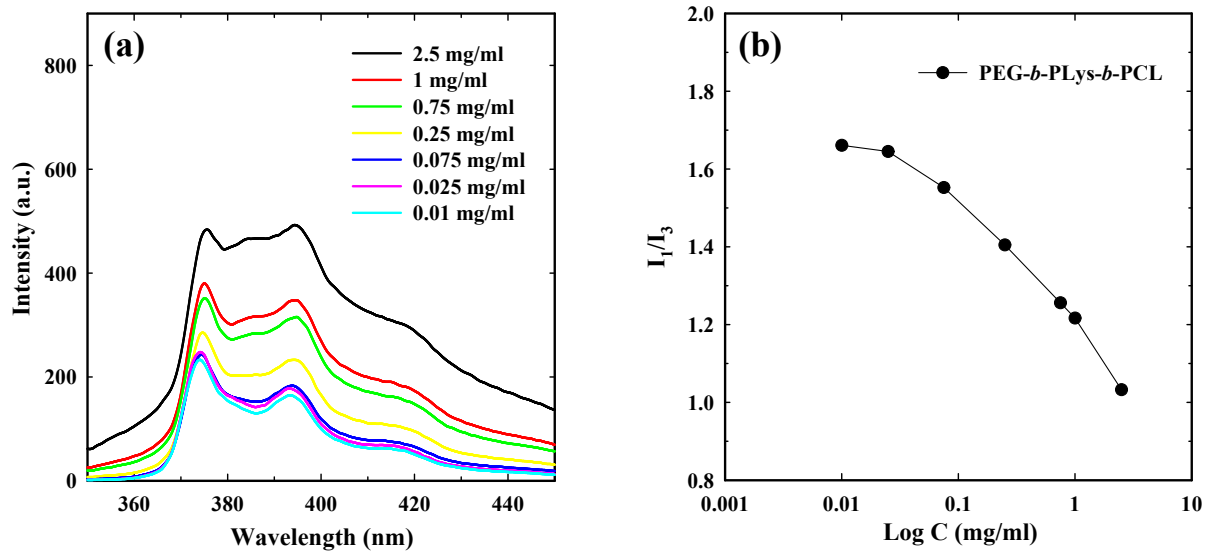
**Fig. S1.** Synthetic route for preparation of (a) PCL-ONPC and (b) PEG-*b*-PLys-*b*-PCL.



**Fig. S2.** <sup>1</sup>H NMR spectra of PEG-*b*-PLys-*b*-PCL and its intermediates. \* indicates the solvent peak.



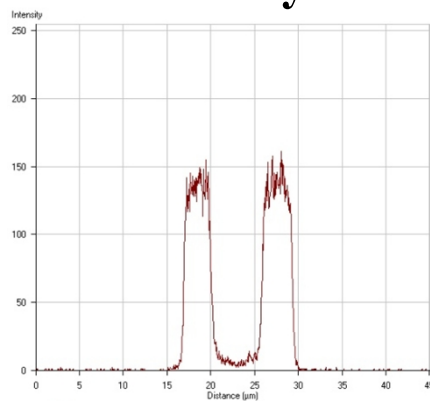
**Fig. S3.** Synthetic route for preparation of CLPMs. The repeating units are corresponds to CLPM2.



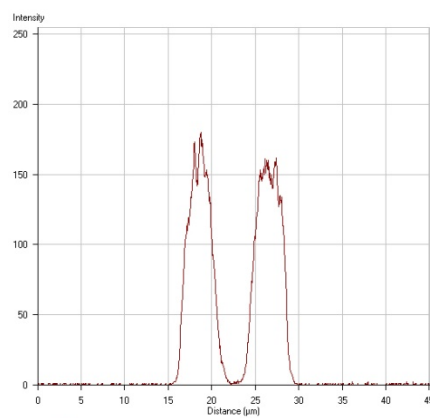
**Fig. S4.** (a) Emission spectra of pyrene in the presence of PEG-*b*-PLys-*b*-PCL copolymer. (b) Plot of pyrene intensity versus copolymer concentrations.

# Fluorescence intensity

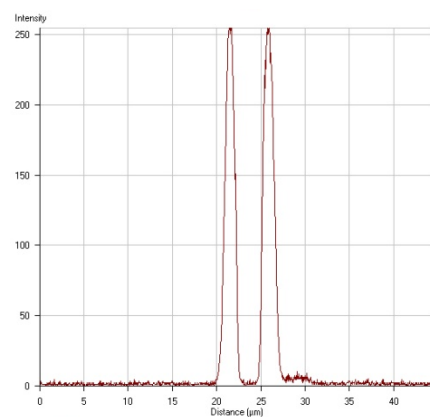
**NCPM**



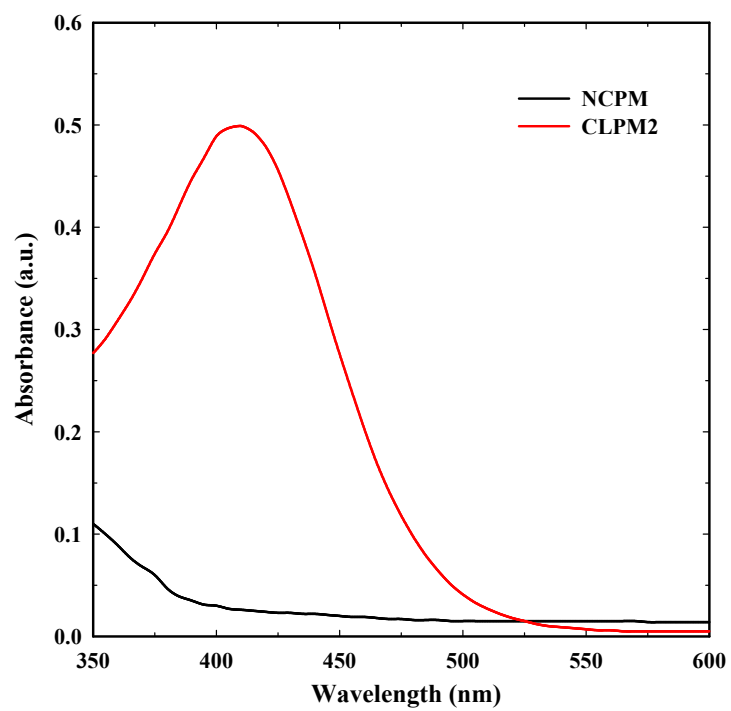
**CLPM1**



**CLPM2**



**Fig. S5.** Fluorescent intensity profiles of Nile-red loaded NCPM; CLPM1; and CLPM2 observed using CLSM.



**Fig. S6:** UV-vis spectra of NCPM and GSH-treated CLPM2.