

Incorporation of Core-shell Particles in Methacrylate based Composites for an Improvement of the Mechanical Properties

Benedict Sandmann,^{ab} Bobby Happ,^{ab} Igor Perevyazko,^{ab} Tobias Rudolph,^{ab} Felix H. Schacher,^{ab} Stephanie Hoepfener,^{ab} Ulrich Mansfeld,^{ab} Martin D. Hager,^{ab} Urs K. Fischer,^c Peter Burtscher,^c Norbert Moszner^{*c} and Ulrich S. Schubert^{*ab}

^aLaboratory of Organic and Macromolecular Chemistry (IOMC), Friedrich Schiller University Jena, Humboldtstraße 10, 07743 Jena, Germany

^bJena Center for Soft Matter (JCSM), Friedrich Schiller University Jena, Philosophenweg 7, 07743 Jena, Germany

^cIvoclar Vivadent AG, Bendererstrasse 2, FL-9494 Schaan, Liechtenstein

Correspondence to: Ulrich S. Schubert (E-mail: ulrich.schubert@uni-jena.de) or Norbert Moszner (E-mail: norbert.moszner@ivoclarvivadent.com)

Supporting Information

Dynamic light scattering results:

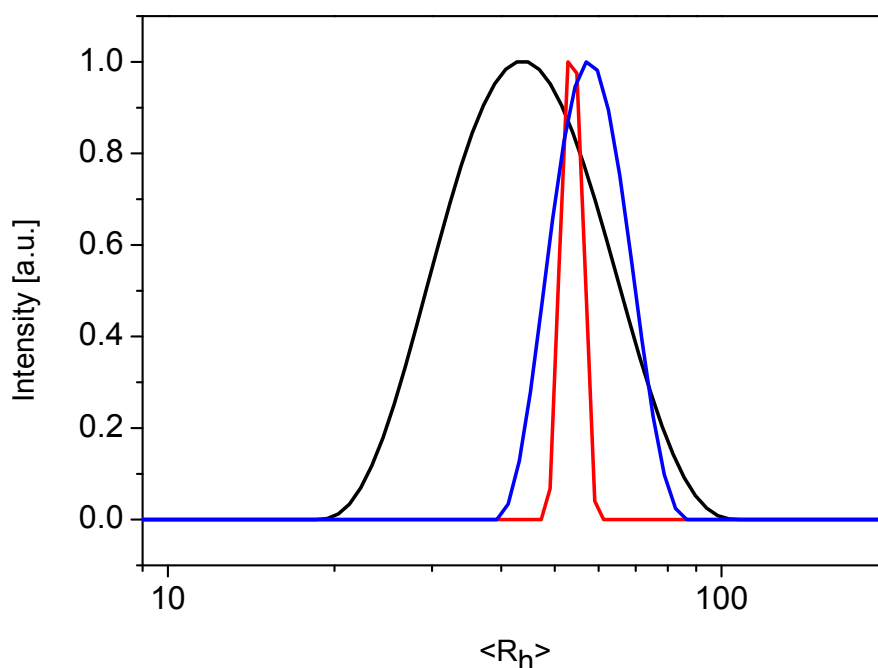


FIGURE SI-1 DLS trace of polymer seeds **1** (black line) and polymer cores **2** (red line) and **3** (blue line).

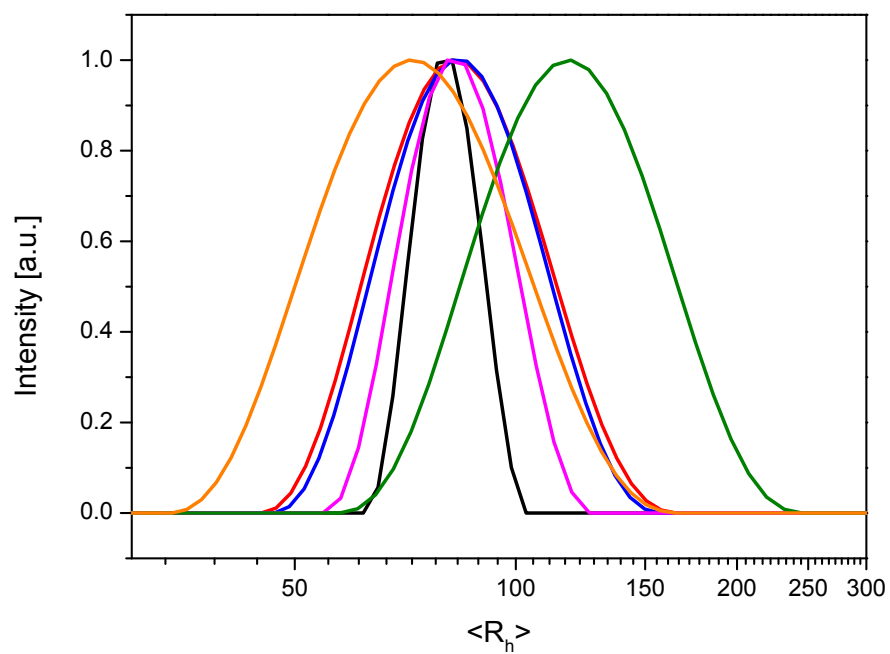


FIGURE SI-2 DLS trace of core-shell particles **4** (black line) **5** (red line), **7** (orange line), **9** (blue line), **10** (pink line) and **11** (green line).

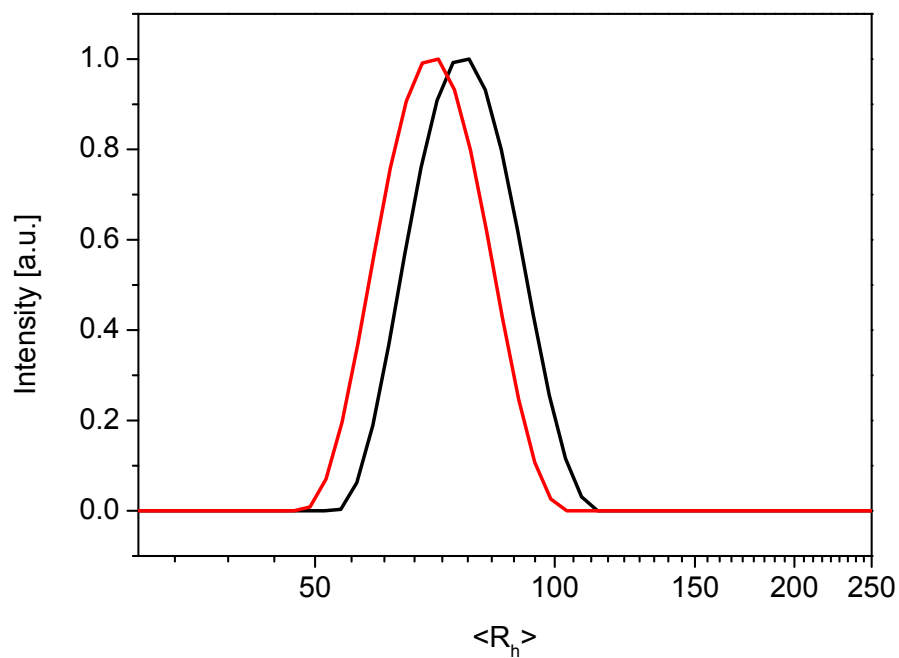


FIGURE SI-3 DLS trace of core-shell particles **6** (red line) and **8** (black line).