

Supporting Information

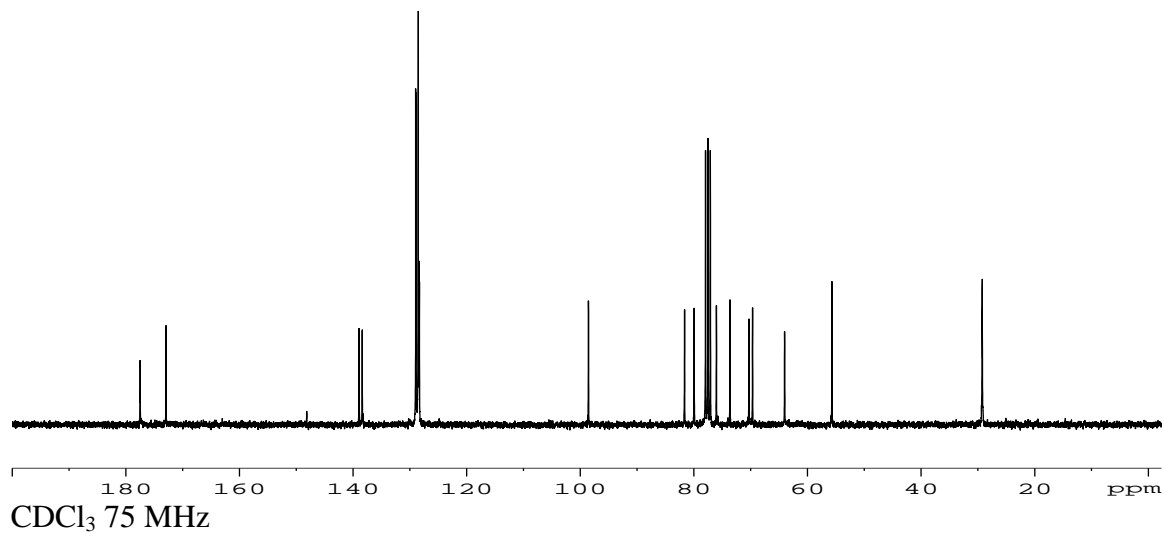
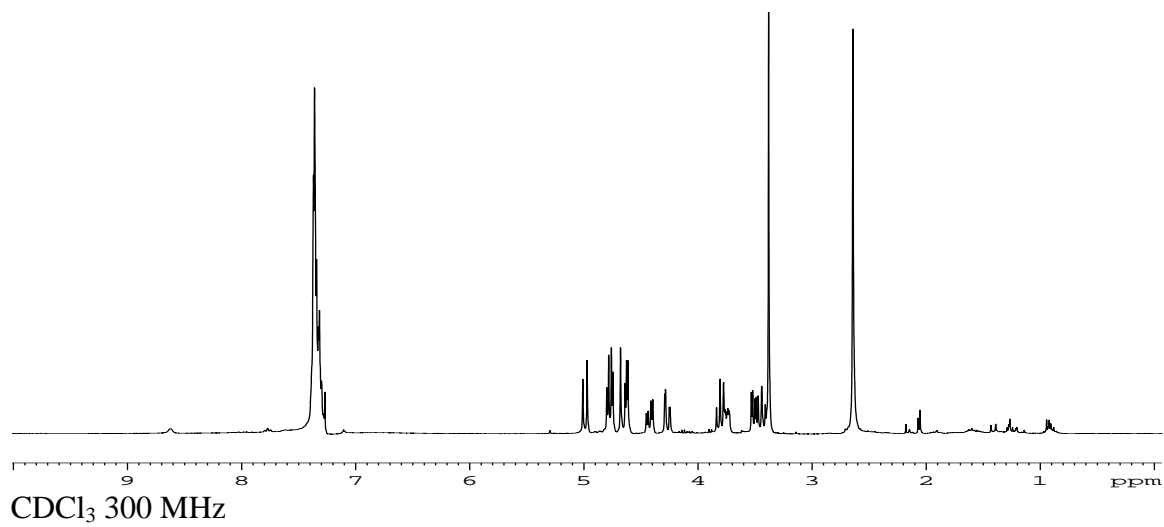
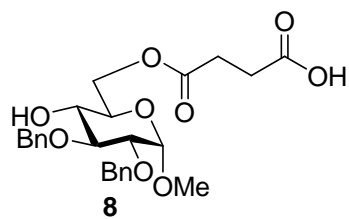
Development of LPS Antagonistic Therapeutics: Synthesis and Evaluation of Glucopyranoside-Spacer-Amino Acid Motifs

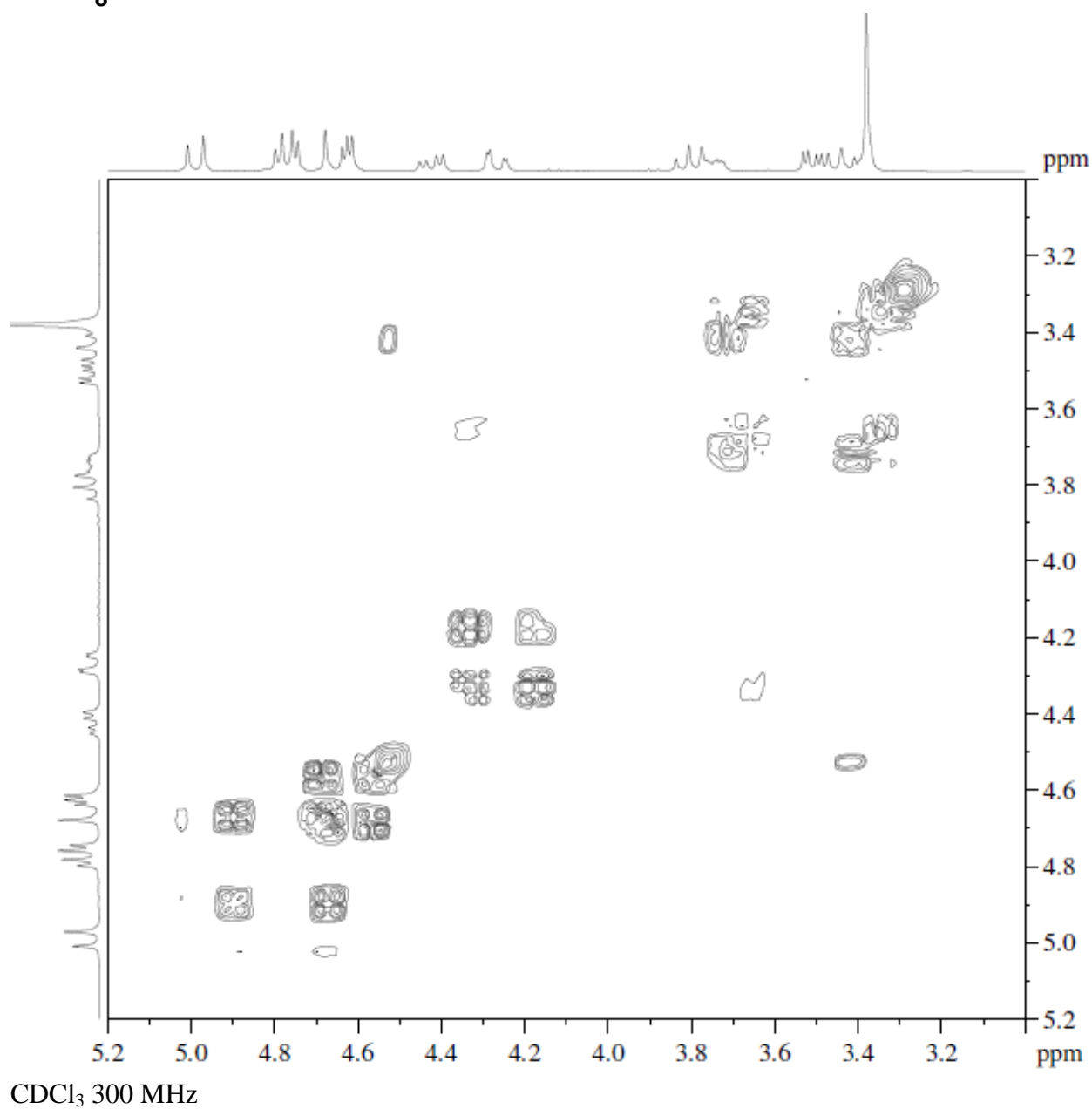
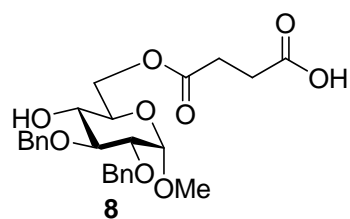
Sophon Kaothip, Geeta Paranjape, Shana E. Terrill, Aileen F. G. Bongat, Maria L. D. Udan, Teerada Kamkhachorn, Hope L. Johnson, Michael R. Nichols,* and Alexei V. Demchenko*

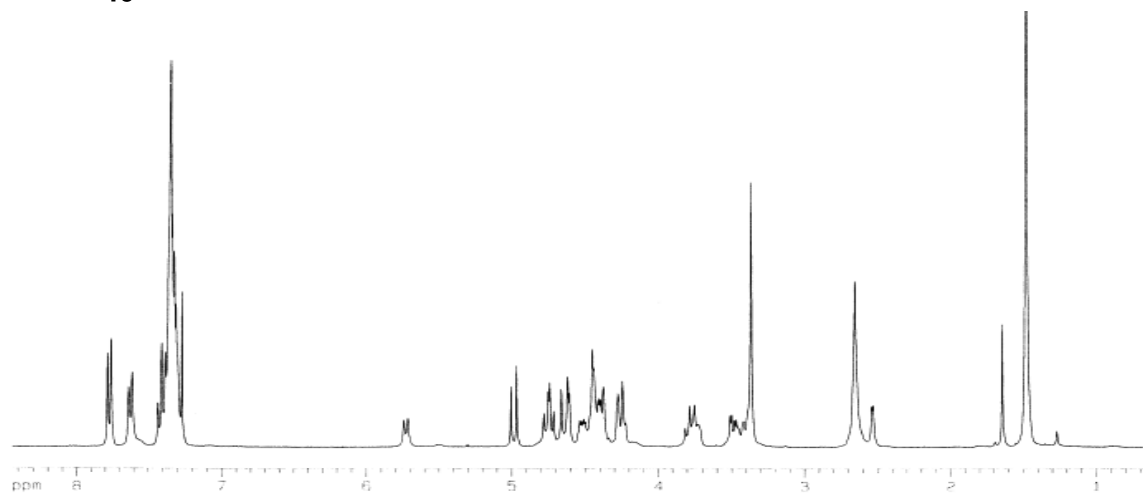
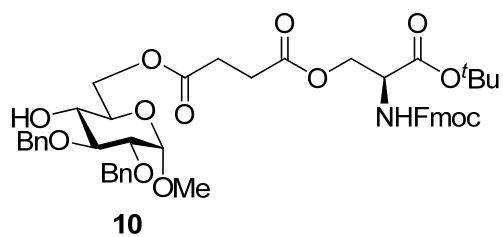
Department of Chemistry and Biochemistry, University of Missouri – St. Louis, One University Boulevard, St. Louis, MO 63121, USA

Contents:

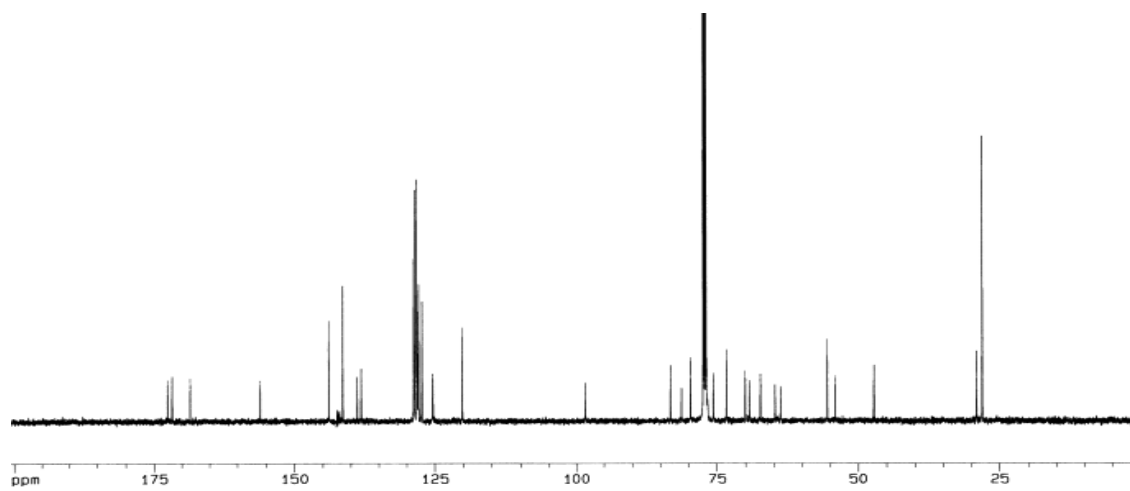
NMR spectra of compound 8	S-2
NMR spectra of compound 10	S-4
NMR spectra of compound 11	S-6
NMR spectra of compound 12	S-8
NMR spectra of compound 13	S-10
NMR spectra of compound 15	S-12
NMR spectra of compound 16	S-14
NMR spectra of compound 17	S-16
NMR spectra of compound 18	S-18
NMR spectra of compound 19	S-20
NMR spectra of compound 22	S-22
NMR spectra of compound 23	S-24
NMR spectra of compound 24	S-26



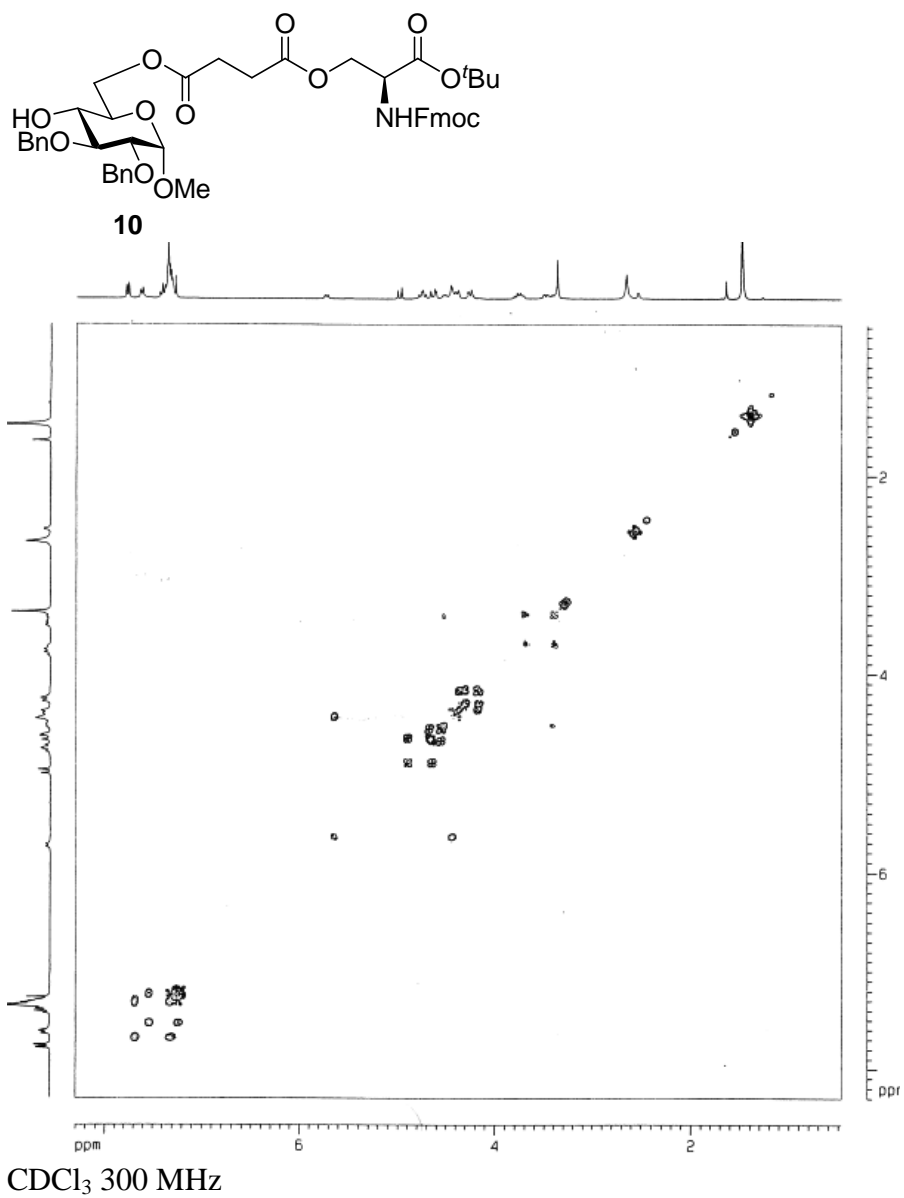


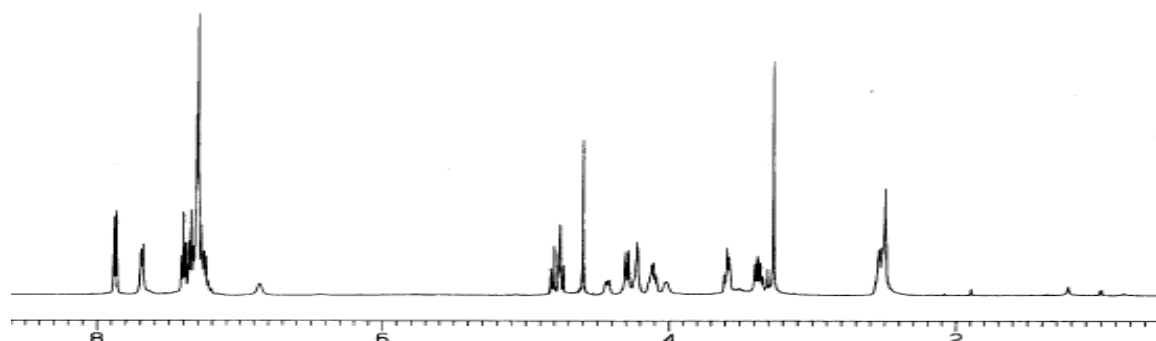
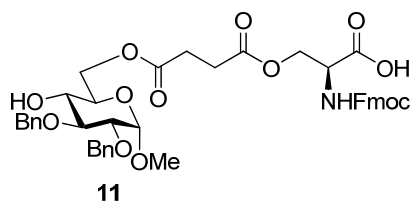


CDCl₃ 300 MHz

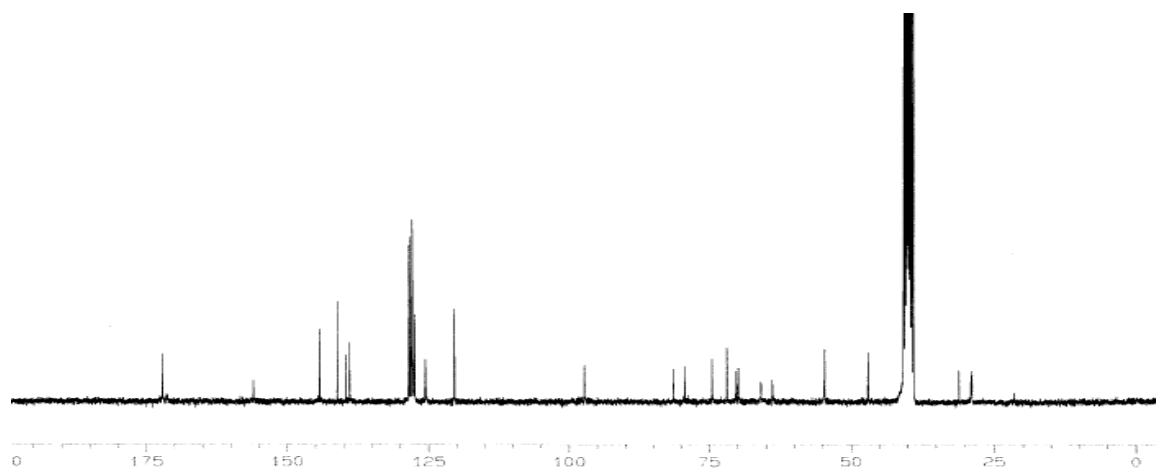


CDCl₃ 125 MHz

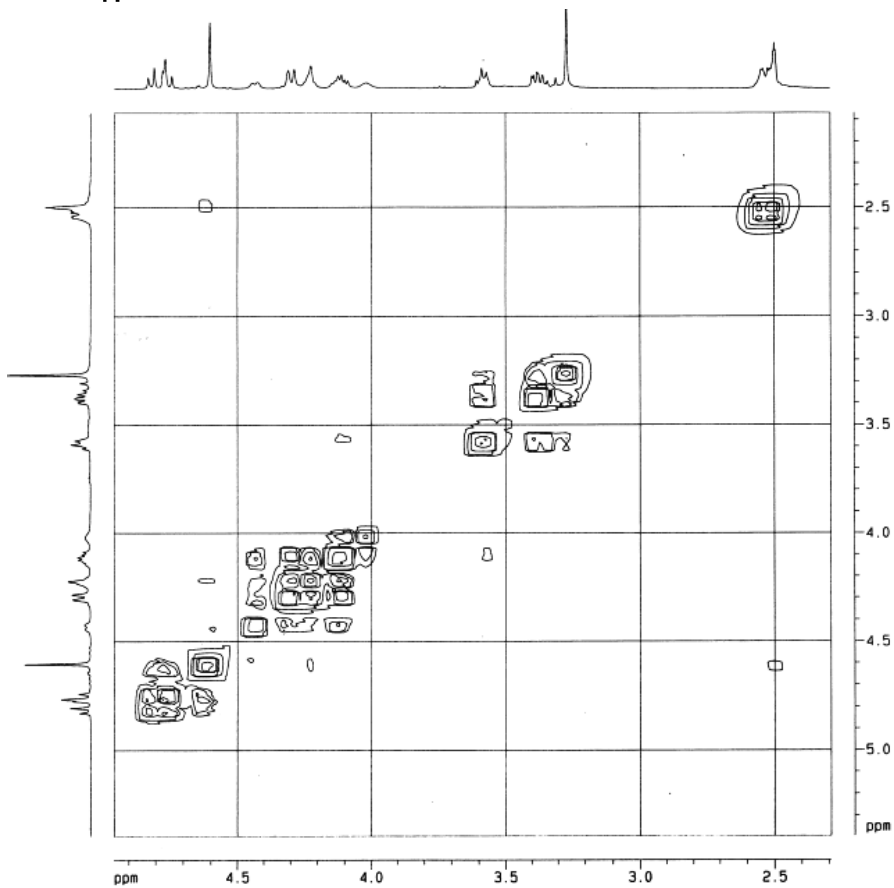
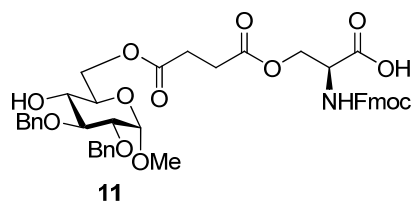




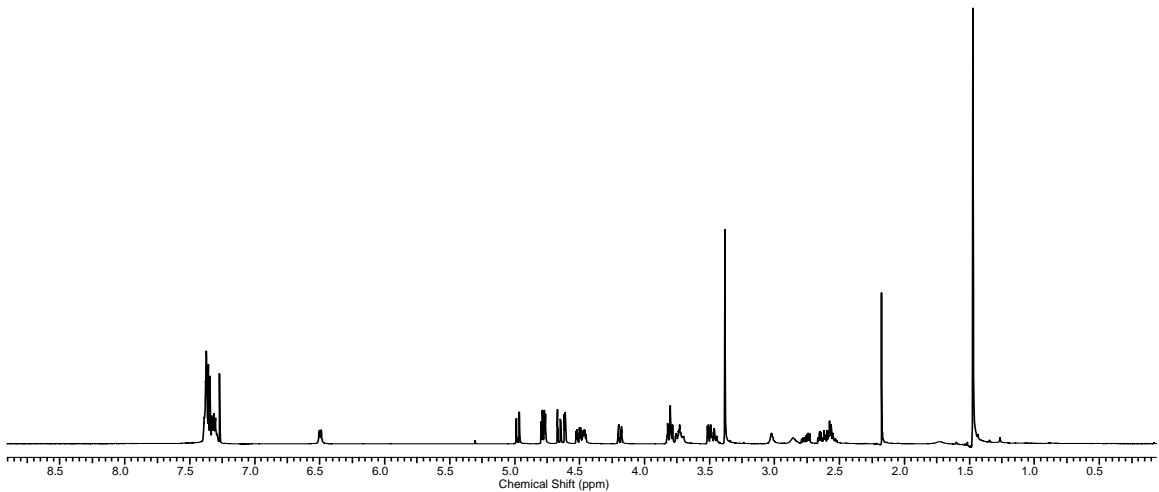
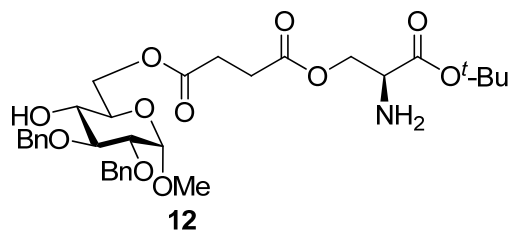
$\text{CDCl}_3:(\text{CD}_3)_2\text{SO}$ (4:2) 500 MHz



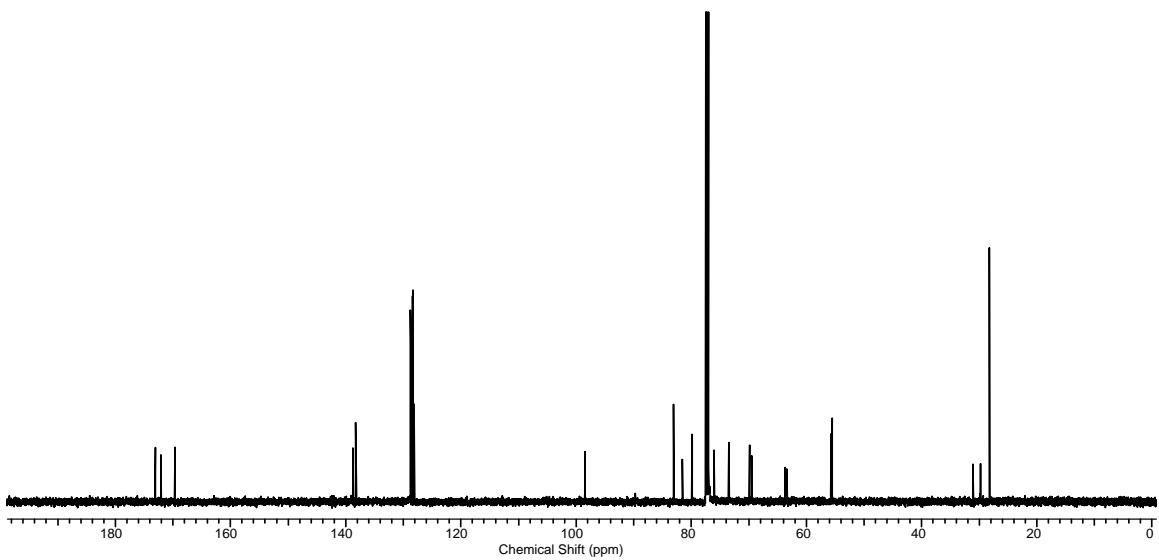
$\text{CDCl}_3:(\text{CD}_3)_2\text{SO}$ (4:2) 75 MHz



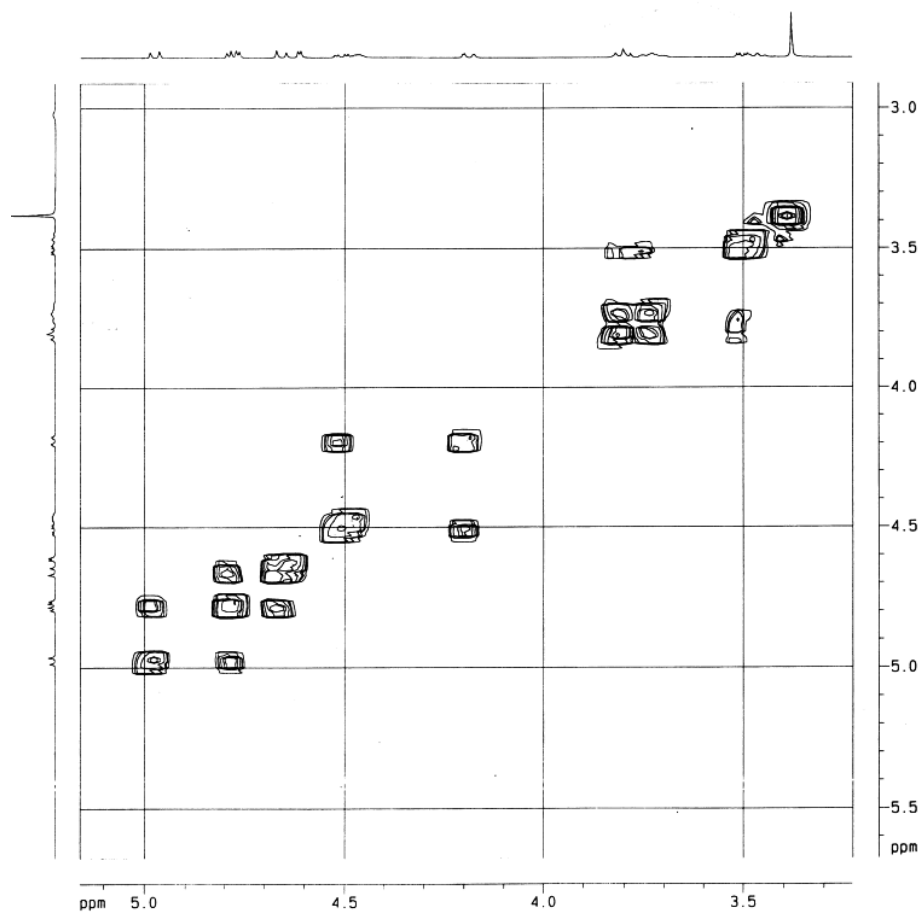
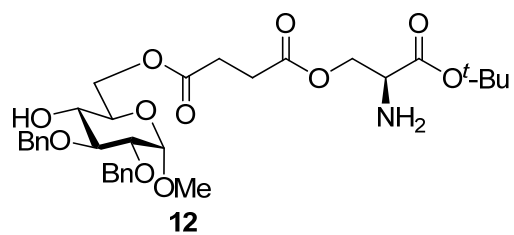
$\text{CDCl}_3:(\text{CD}_3)_2\text{SO}$ (4:2) 500 MHz



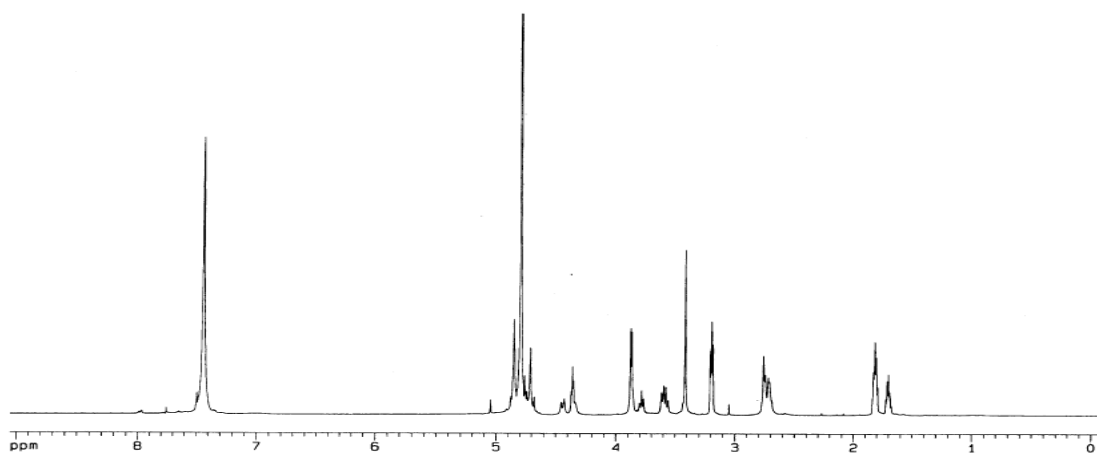
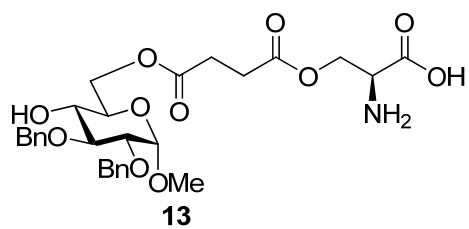
CDCl₃ 500 MHz



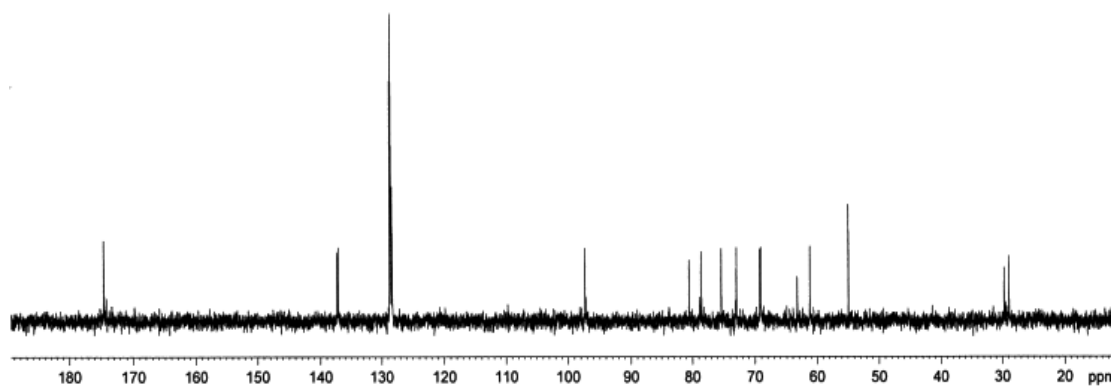
CDCl₃ 125 MHz



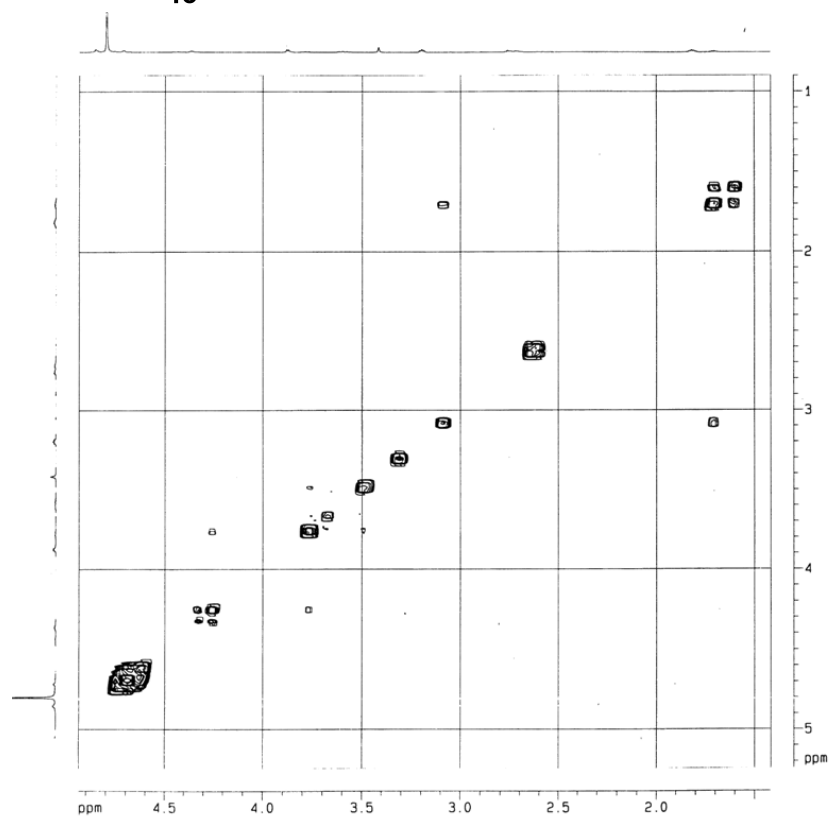
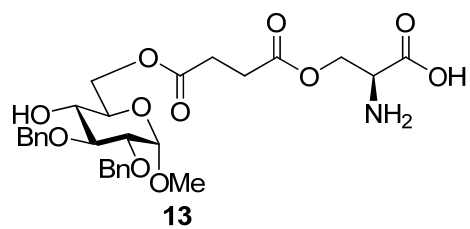
CDCl_3 500 MHz



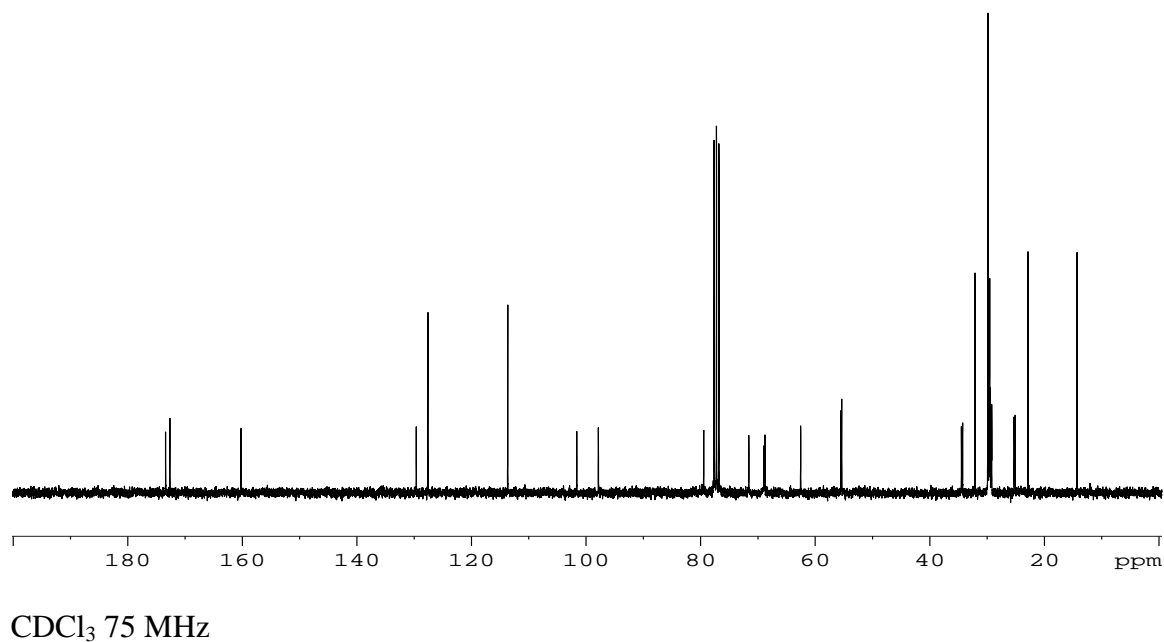
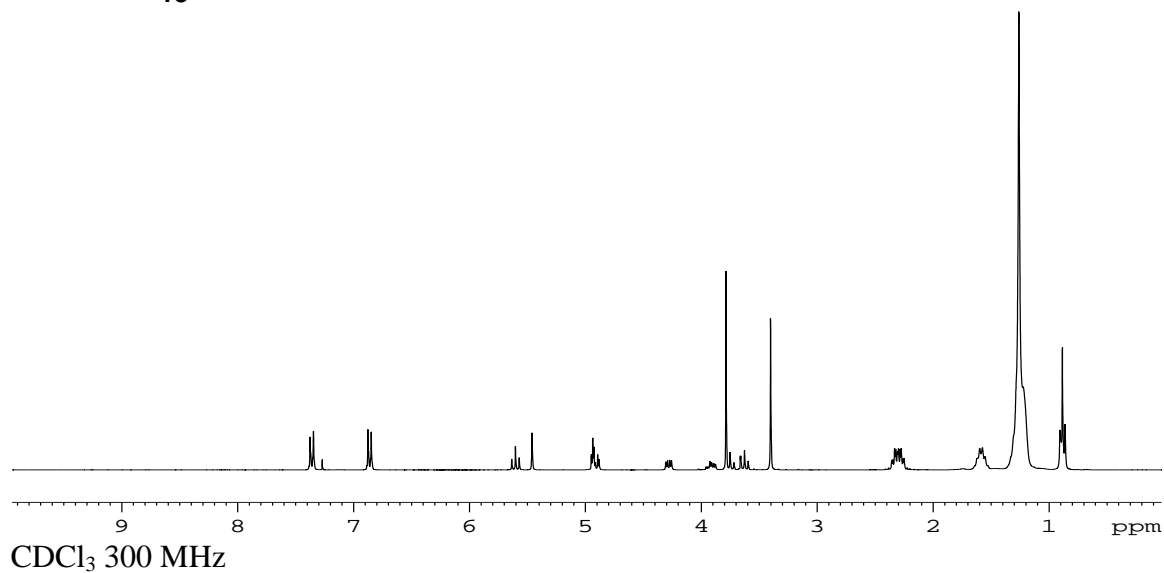
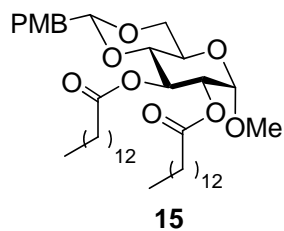
D₂O 500 MHz

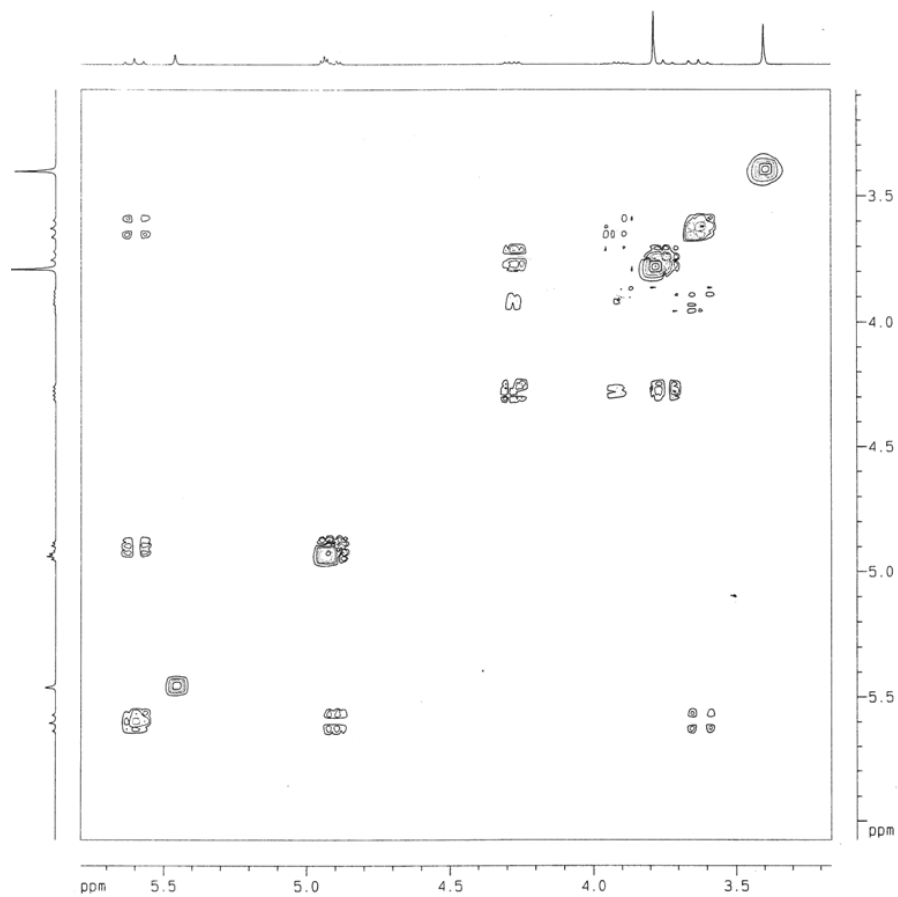
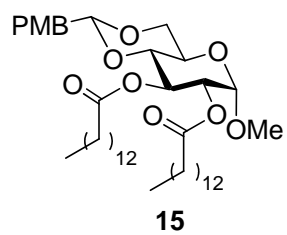


D₂O 75 MHz

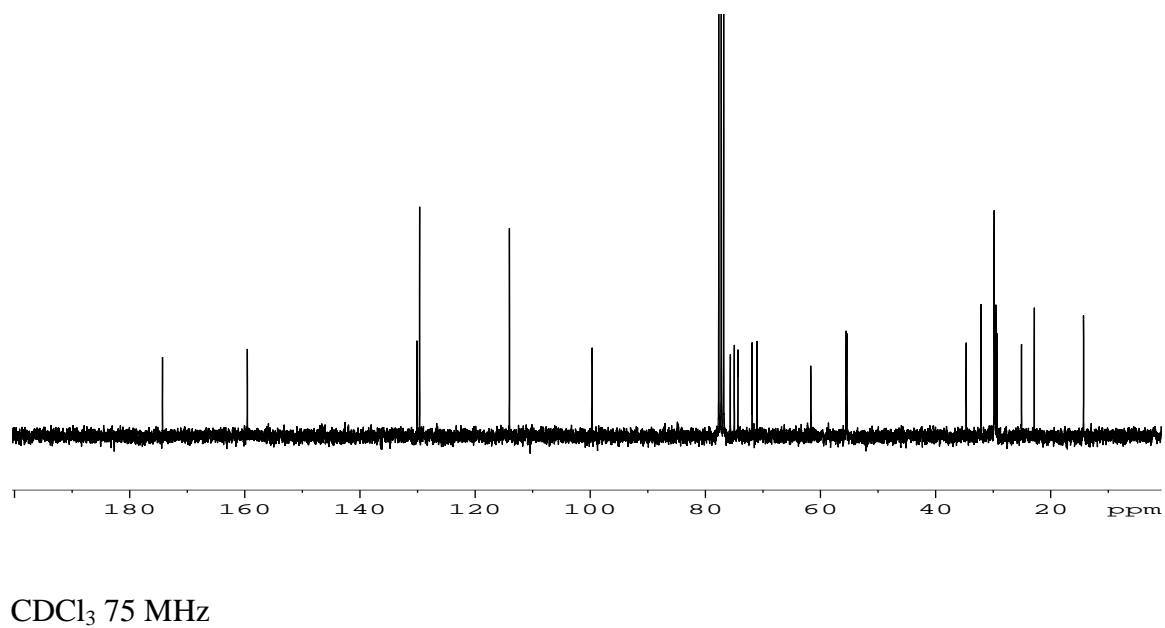
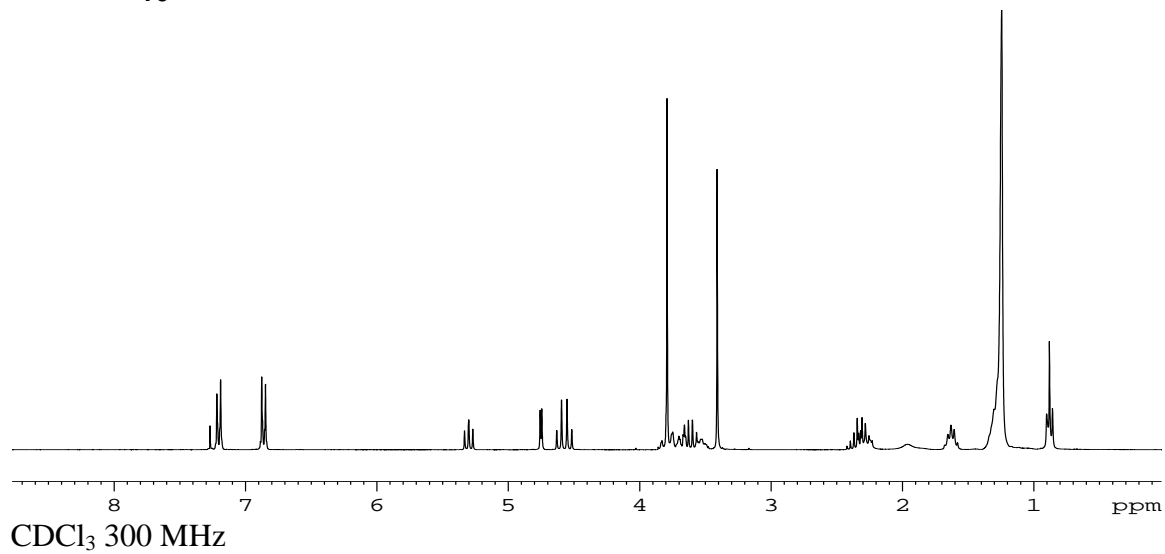
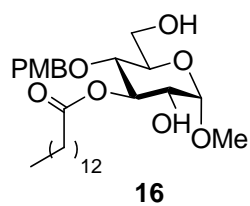


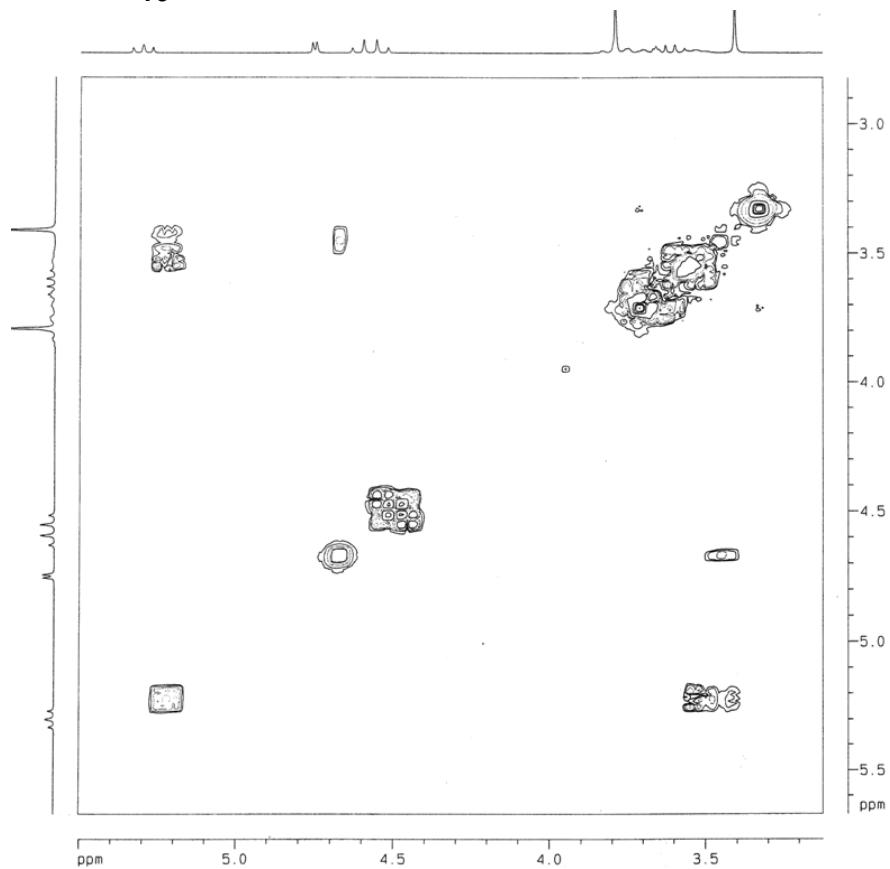
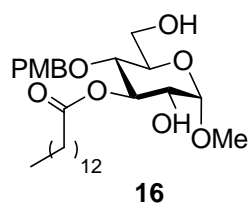
D₂O 500 MHz



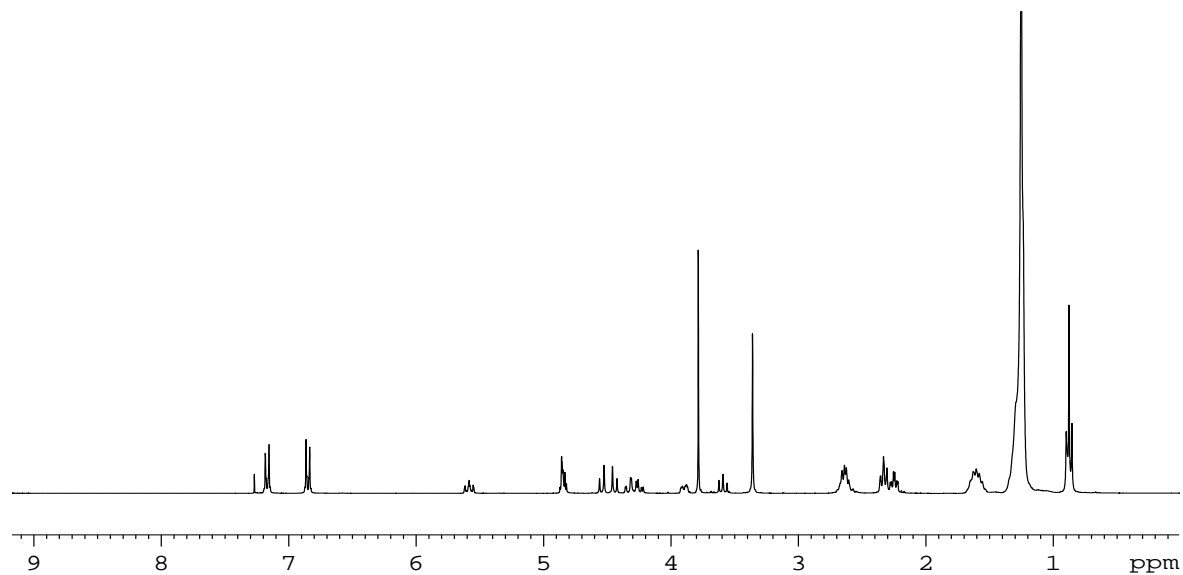
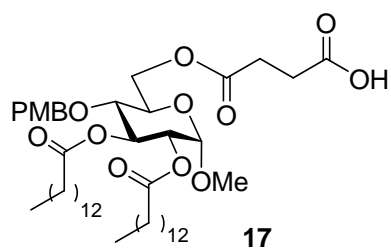


CDCl_3 300 MHz

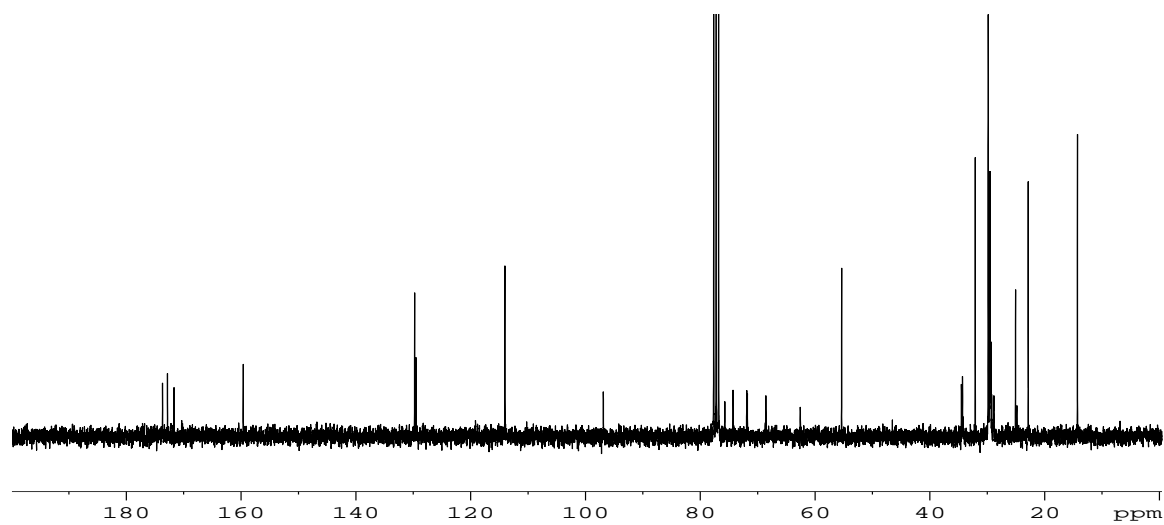




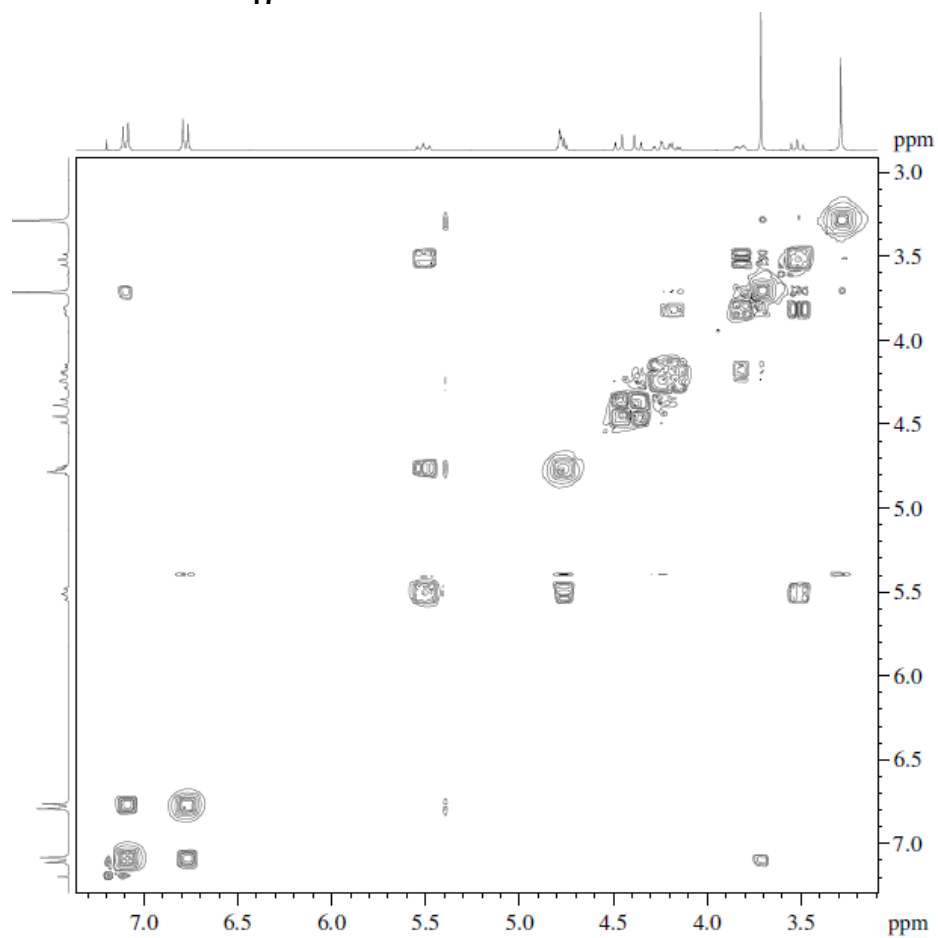
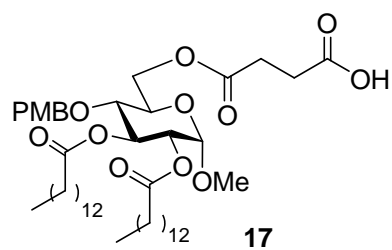
CDCl_3 300 MHz



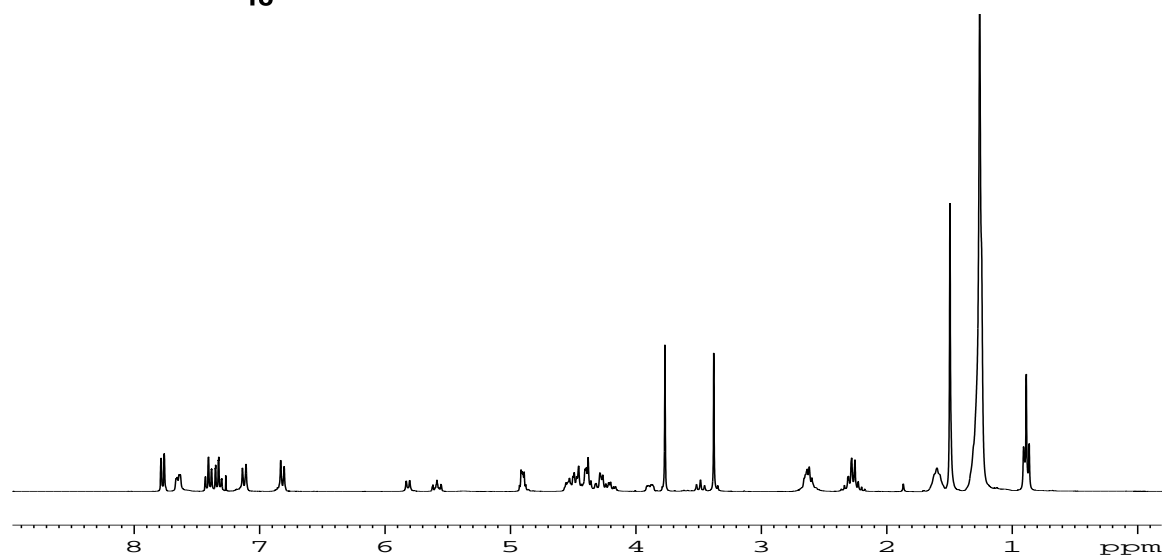
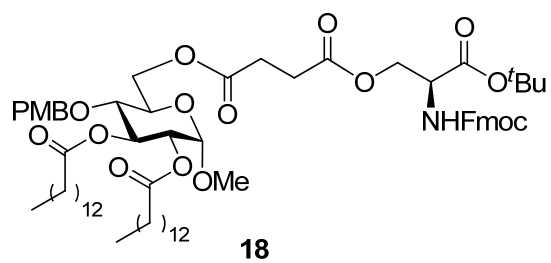
CDCl₃ 300 MHz



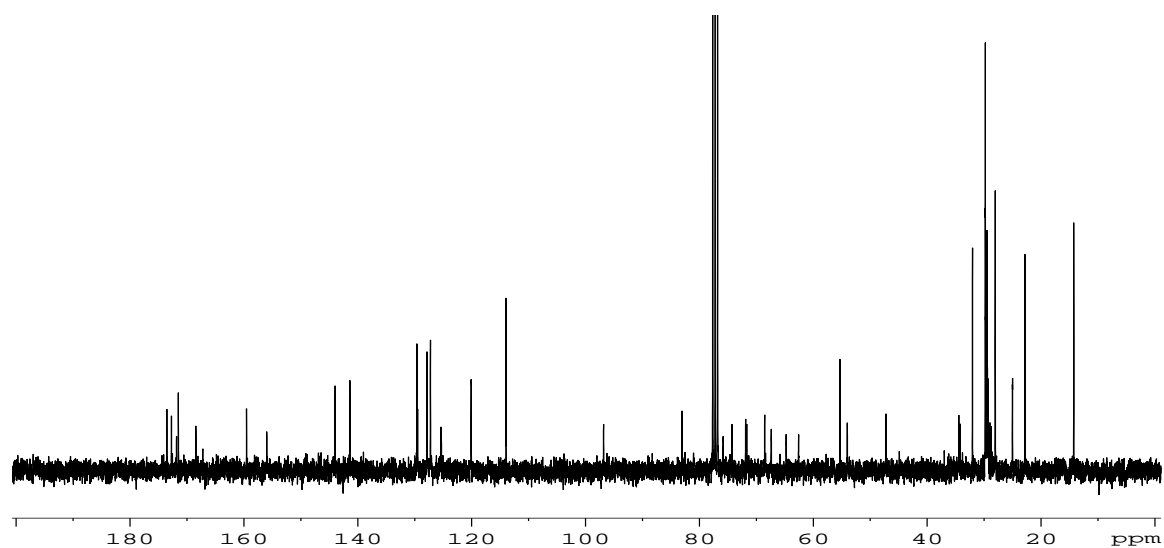
CDCl₃ 75 MHz



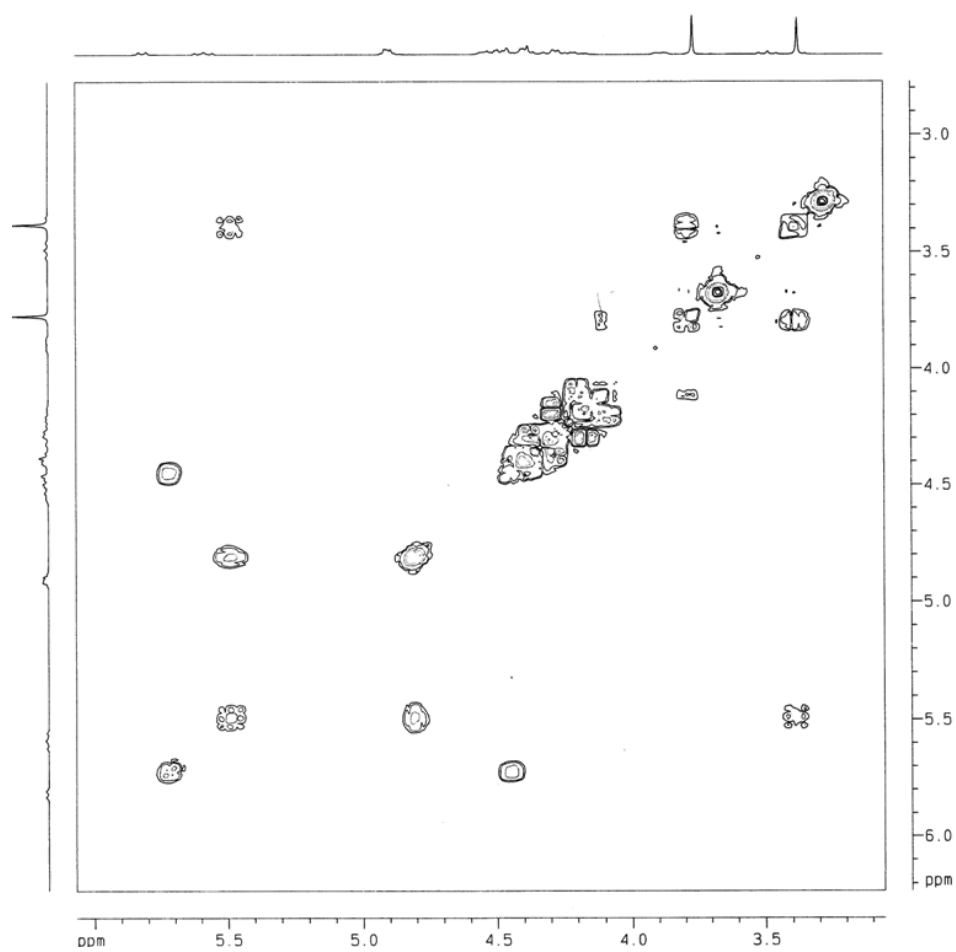
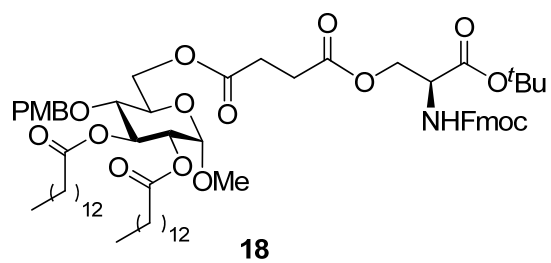
CDCl_3 300 MHz



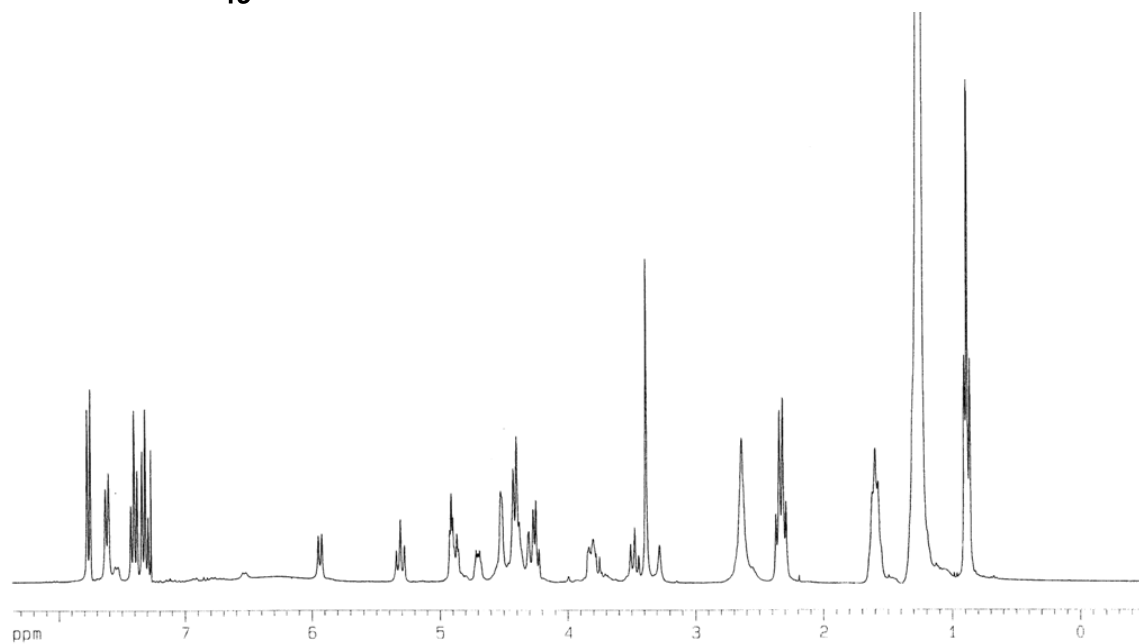
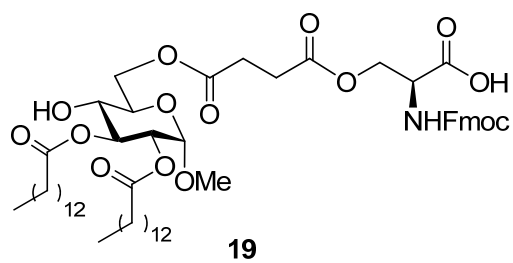
CDCl₃ 300 MHz



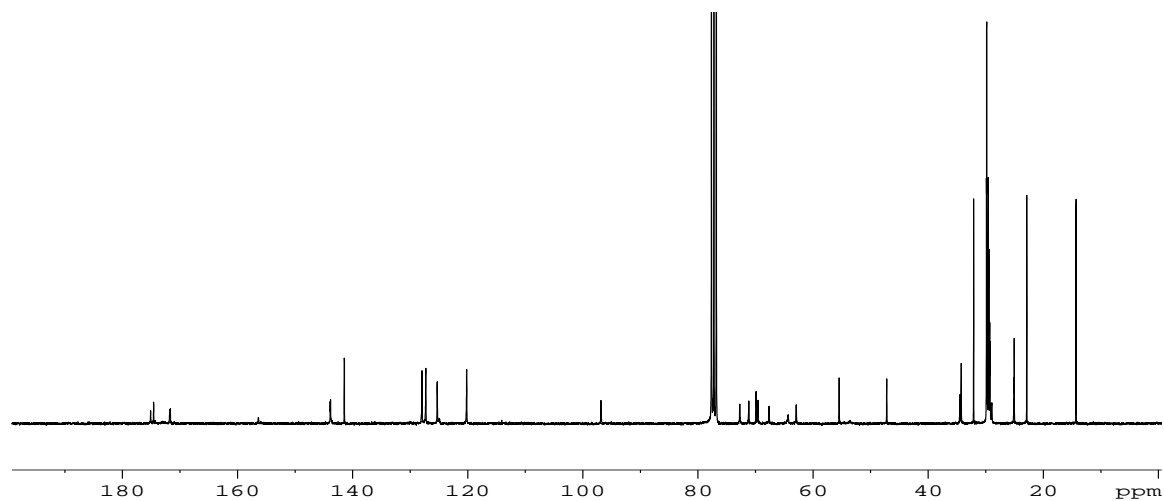
CDCl₃ 75 MHz



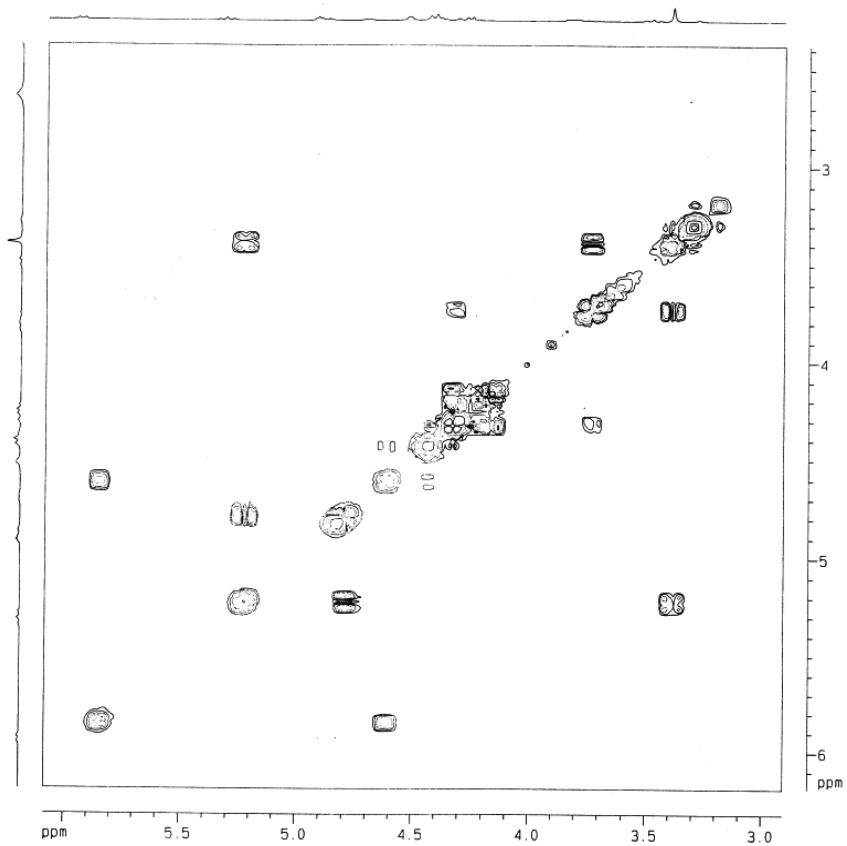
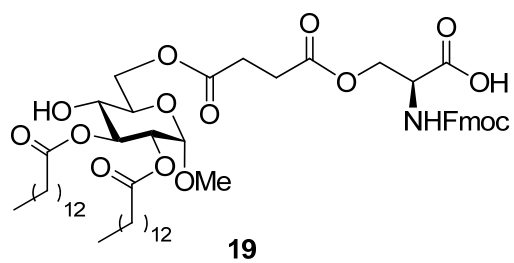
CDCl_3 300 MHz



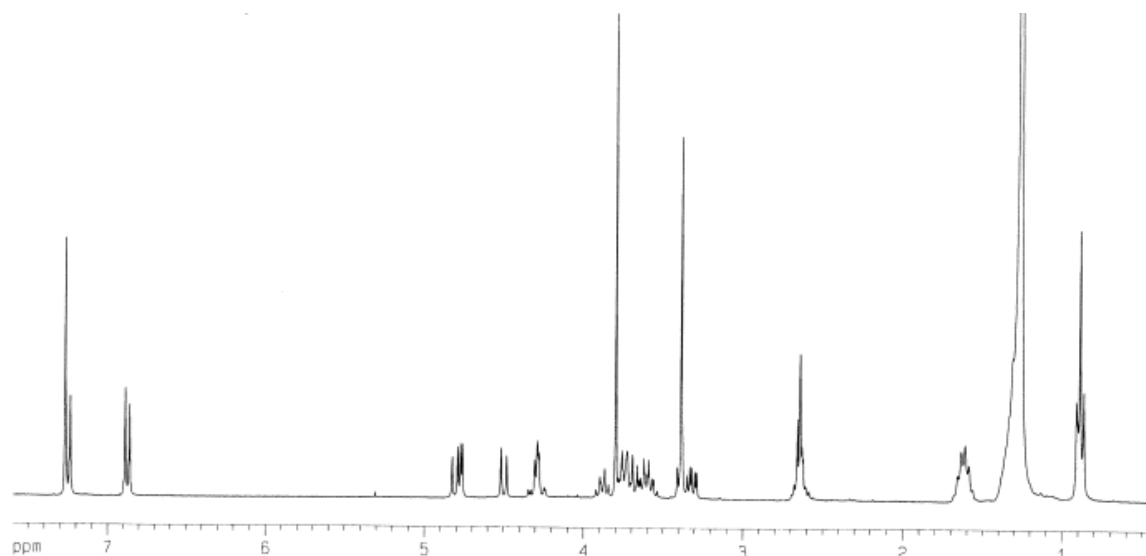
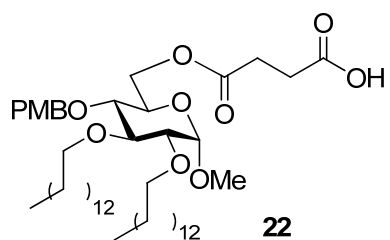
CDCl₃ 300 MHz



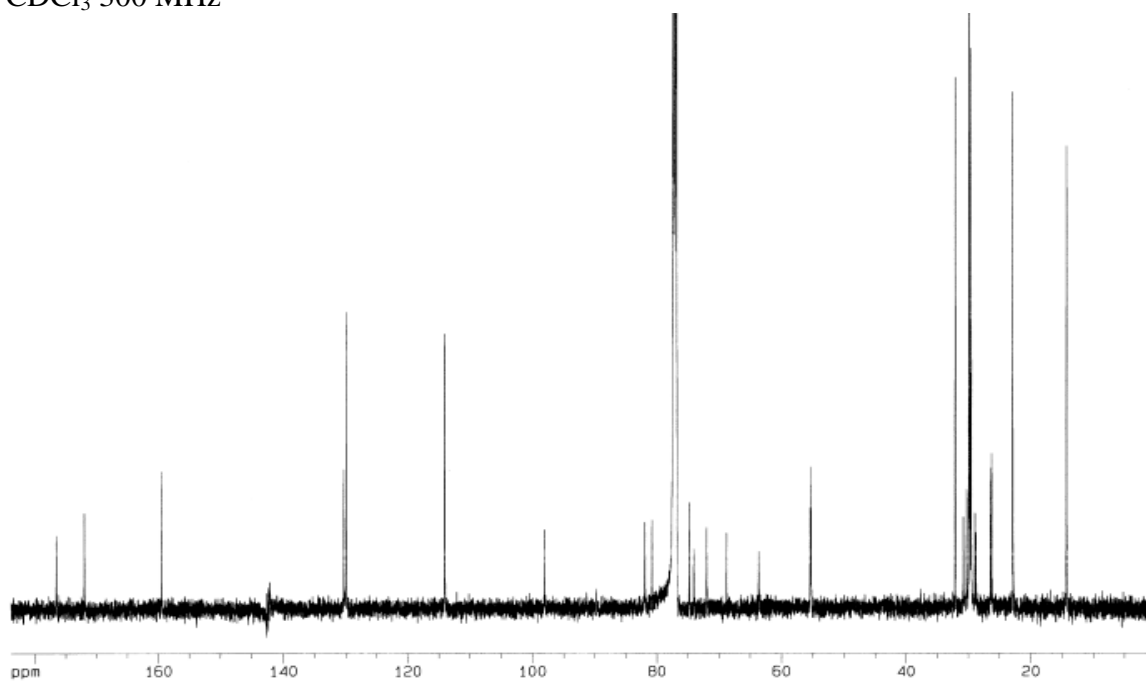
CDCl₃ 75 MHz



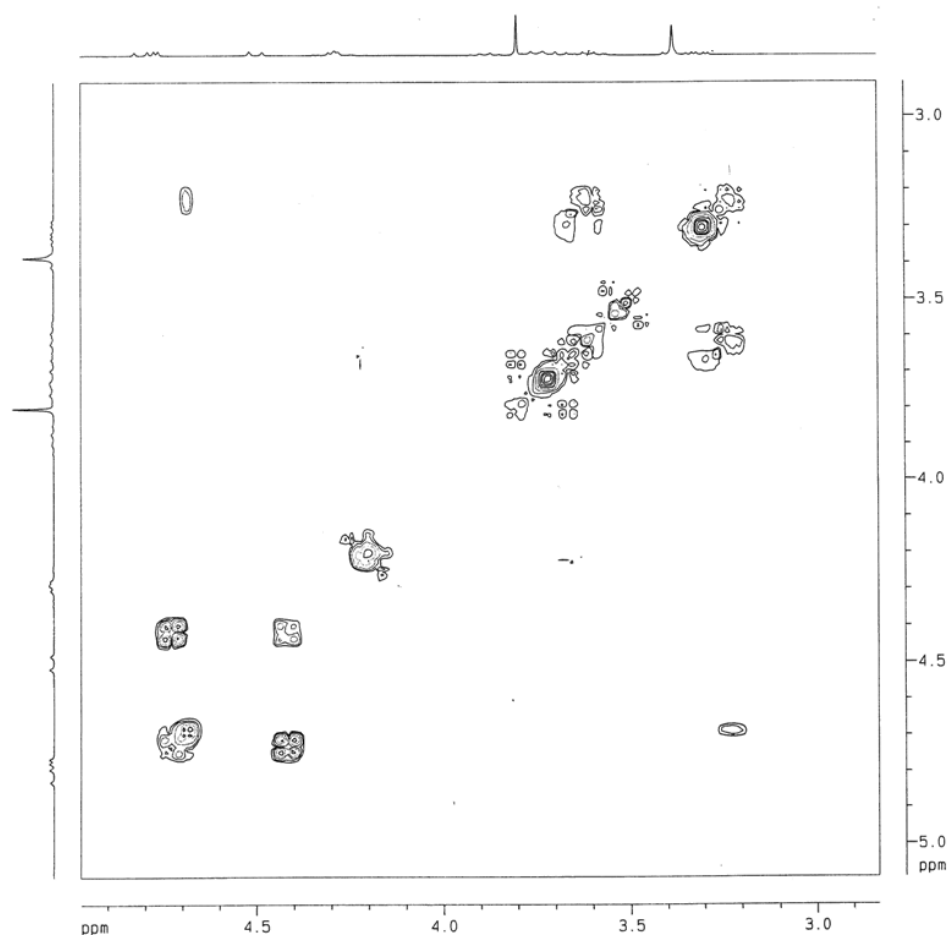
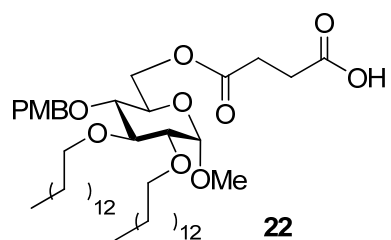
CDCl₃ 300 MHz



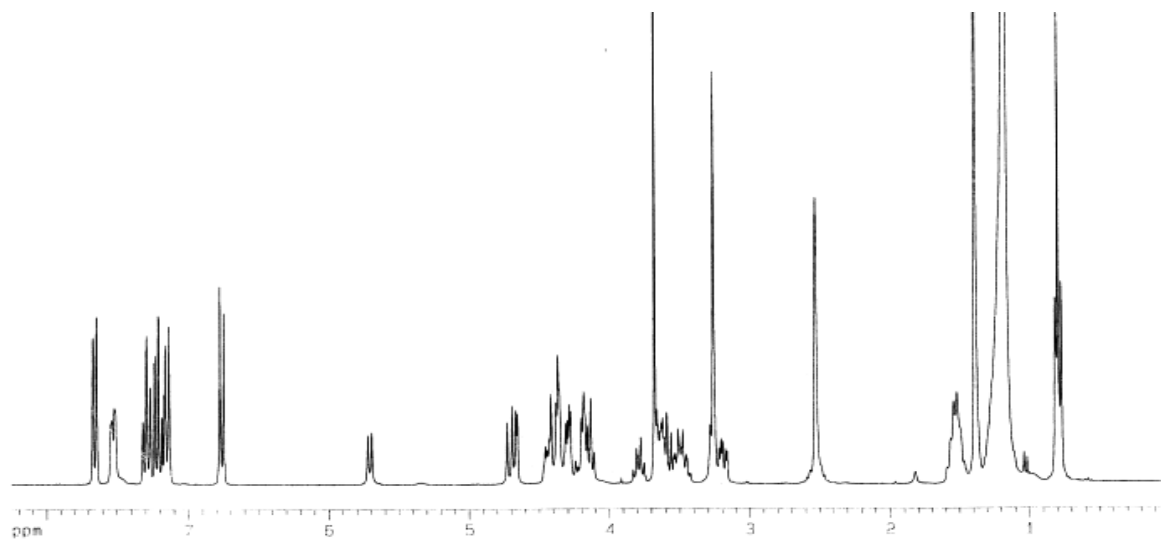
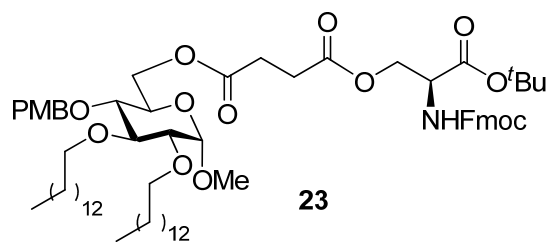
CDCl₃ 300 MHz



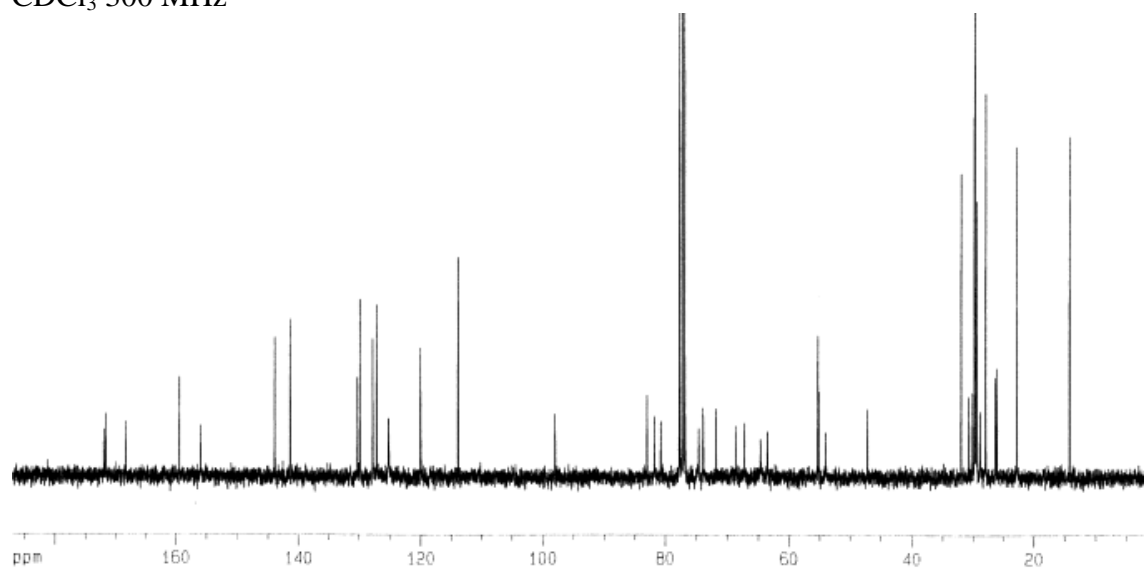
CDCl₃ 125 MHz



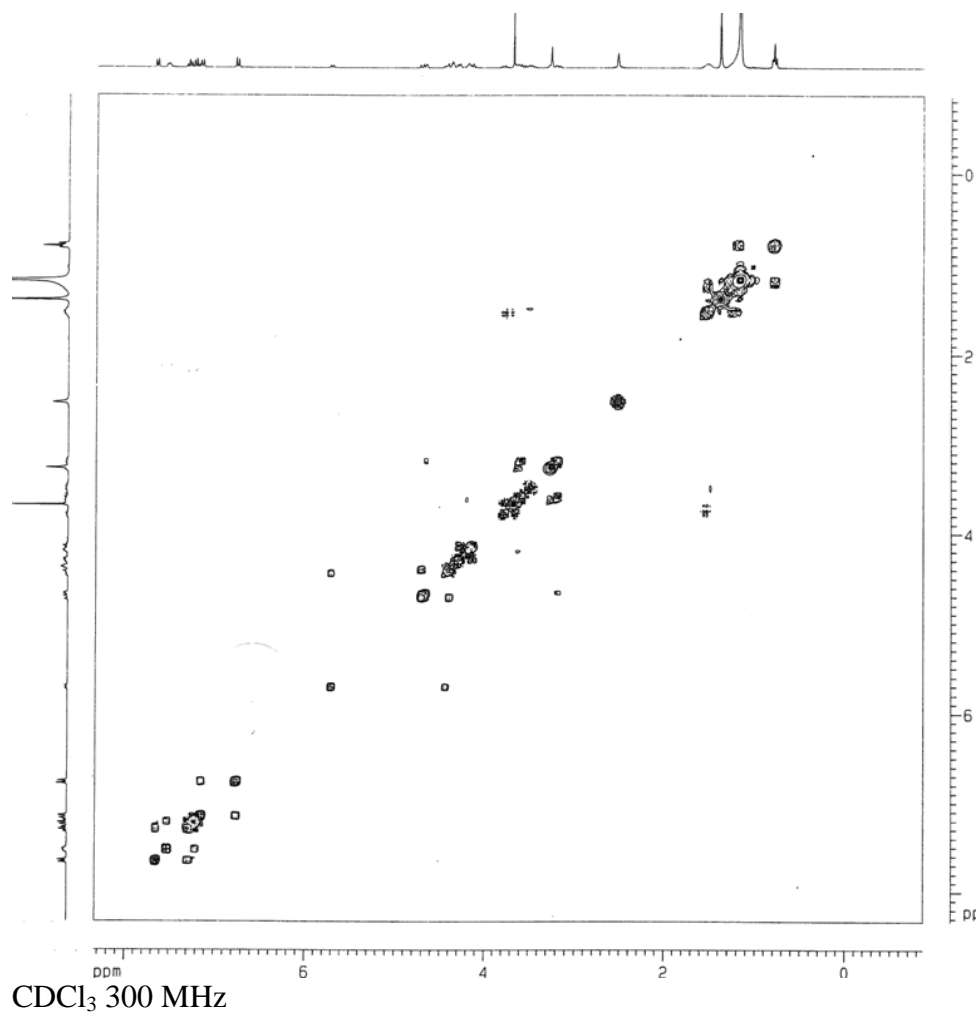
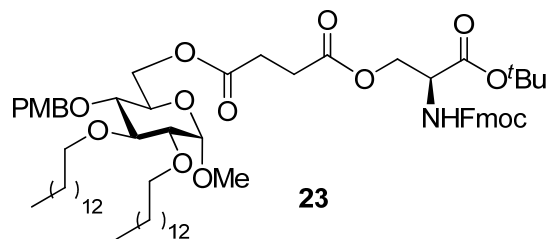
CDCl_3 300 MHz

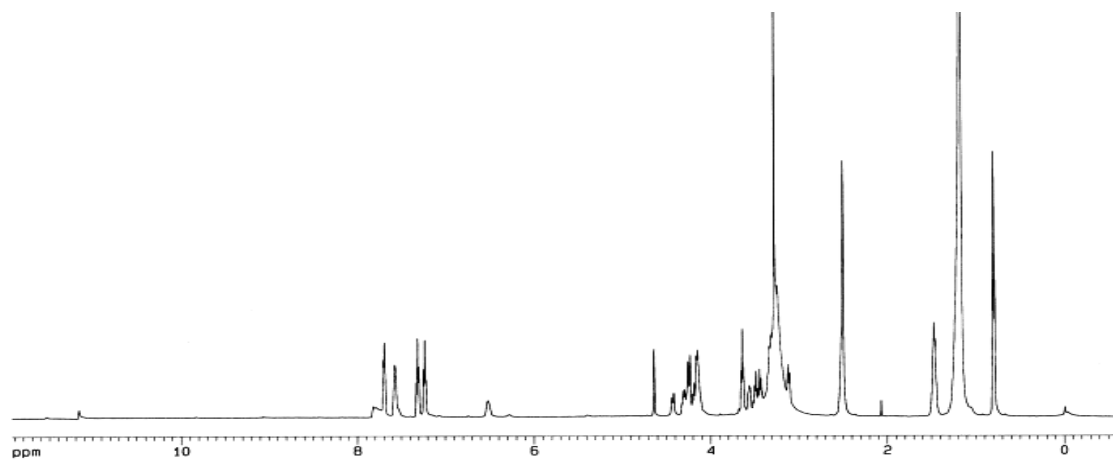
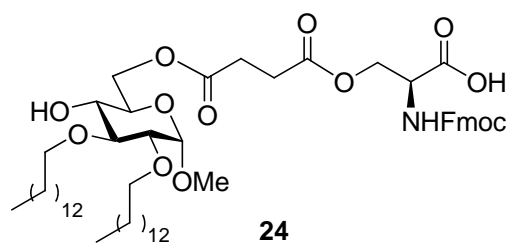


CDCl₃ 300 MHz

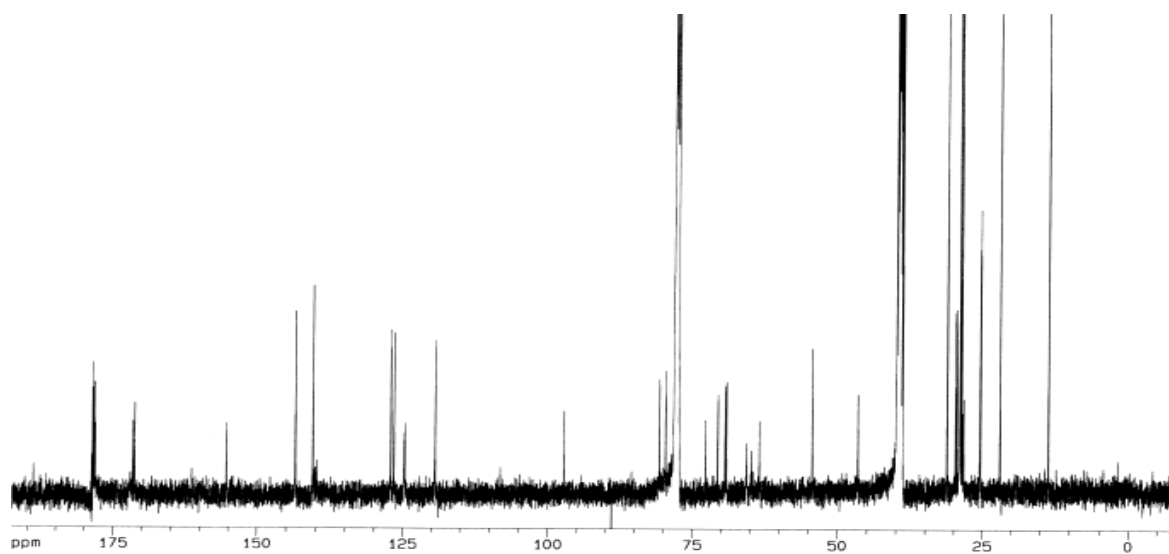


CDCl₃ 75 MHz

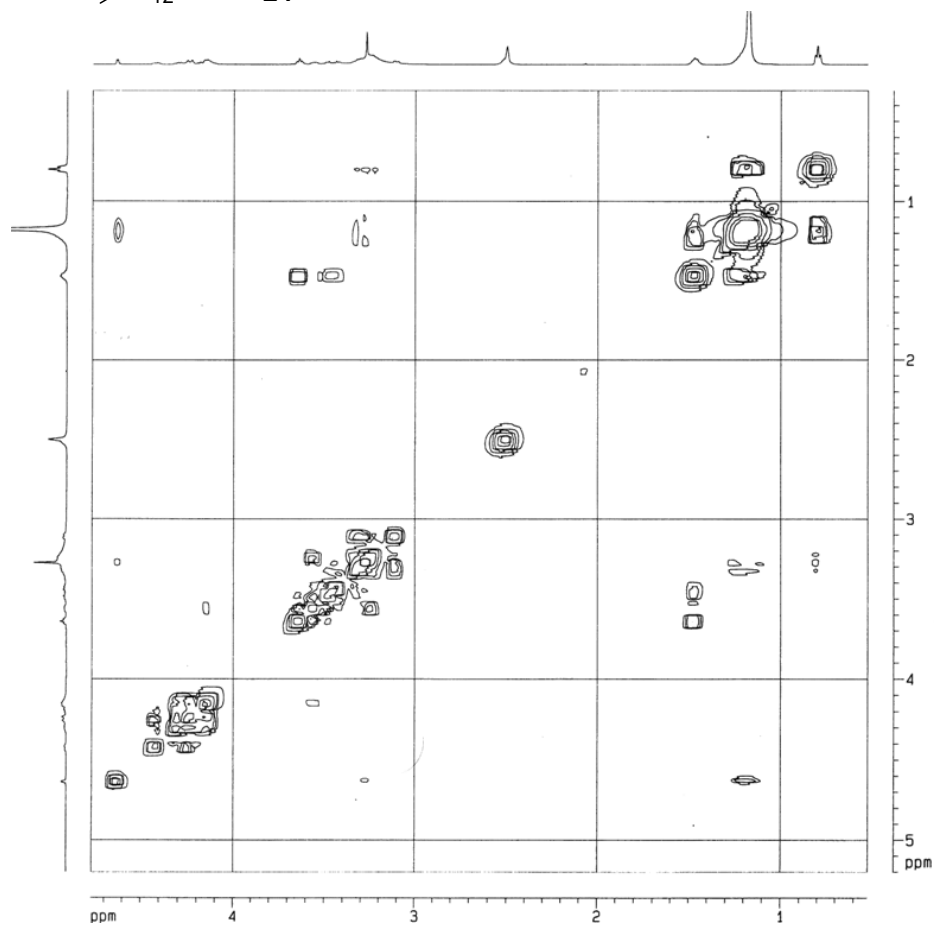
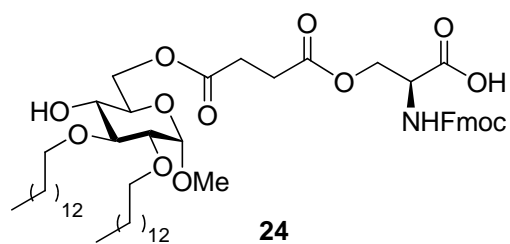




$\text{CDCl}_3:(\text{CD}_3)_2\text{SO}$ (4:2) 500 MHz



$\text{CDCl}_3:(\text{CD}_3)_2\text{SO}$ (4:2) 125 MHz



$\text{CDCl}_3:(\text{CD}_3)_2\text{SO}$ (4:2) 500 MHz