

† Electronic Supplementary Information (ESI) for Organic & Biomolecular Chemistry DOI: 10.1039/b000000x/

Supplementary material

Additional bioactive guanidine alkaloids from the Mediterranean sponge *Crambe crambe*

Stéphanie Bondu, Grégory Genta-Jouve, Marta Leirós, Carmen Valle, Jean-Marie Guignonis, Luis M. Botana, and Olivier P. Thomas*

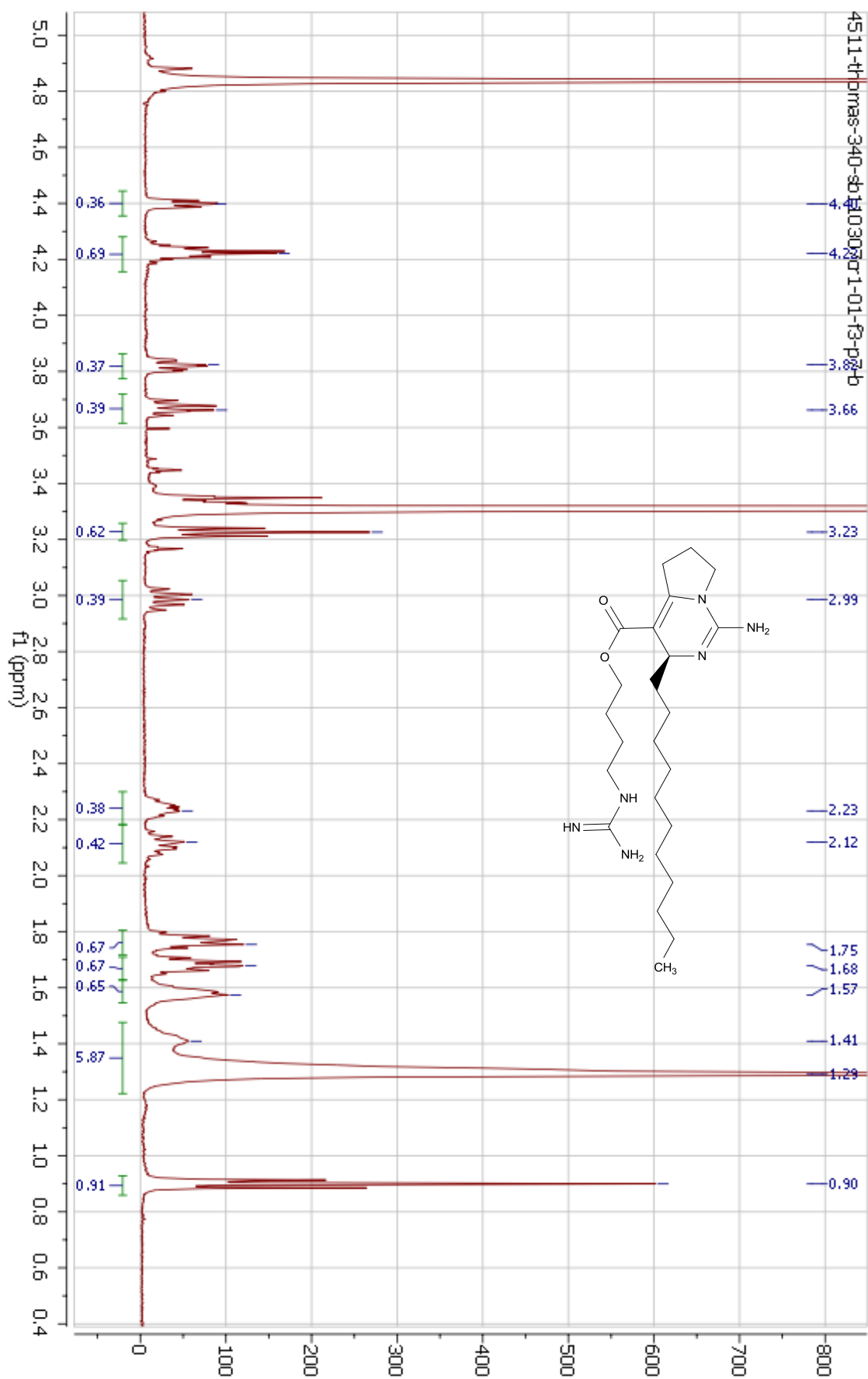
E-mail: olivier.thomas@unice.fr

NMR spectra

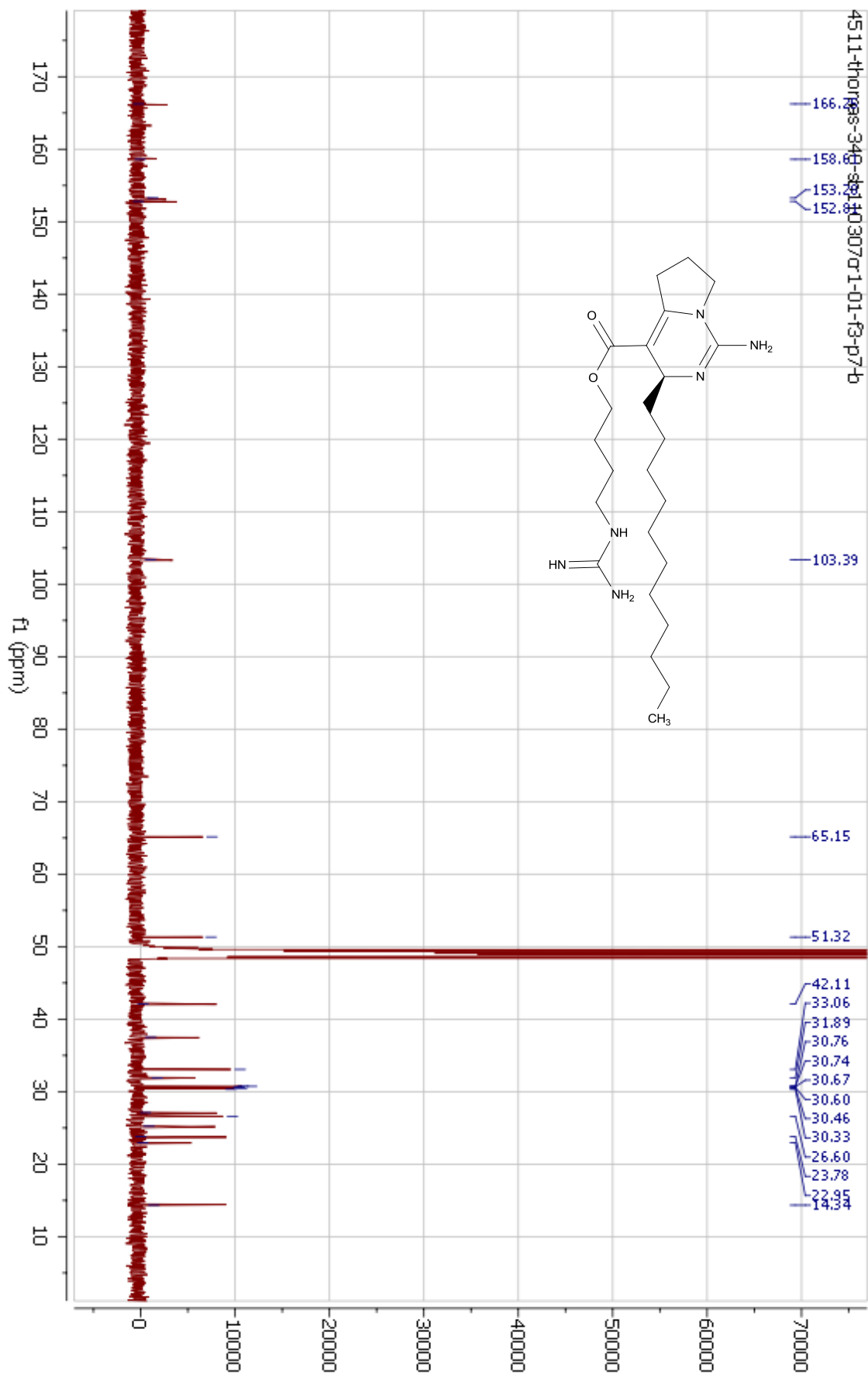
Crambescin A2 (1)	
¹ H NMR spectrum (500 MHz, CD3OD)	S-2
¹³ C NMR spectrum (125 MHz, CD3OD)	S-3
¹ H- ¹ H COSY spectrum (500 MHz, CD3OD)	S-4
Crambescin A1 (4)	
¹ H NMR spectrum (500 MHz, CD3OD)	S-5
¹³ C NMR spectrum (125 MHz, CD3OD)	S-6
¹ H- ¹ H COSY spectrum (500 MHz, CD3OD)	S-7
Didehydrocrambescin A1 (5)	
¹ H NMR spectrum (500 MHz, CD3OD)	S-8
¹ H- ¹ H COSY spectrum (500 MHz, CD3OD)	S-9
Crambescin B1 (7)	
¹ H NMR spectrum (500 MHz, CD3OD)	S-10
¹³ C NMR spectrum (125 MHz, CD3OD)	S-11
¹ H- ¹ H COSY spectrum (500 MHz, CD3OD)	S-12
Crambescin C1 (10)	
¹ H NMR spectrum (500 MHz, CD3OD)	S-13
¹ H- ¹ H COSY spectrum (500 MHz, CD3OD)	S-14
¹ H- ¹³ C HMBC spectrum (500 MHz, CD3OD)	S-15
¹ H NMR spectra of crambescins A2 (1-3) and crambescin A1 (4)	S-16
¹ H NMR spectra of crambescins B2 (6-8)	S-16
¹ H NMR spectra of crambescins C1 (9-11)	S-17
¹ H NMR spectrum of crambescidine 816 (12)	S-18
¹³ C NMR spectrum of crambescidine 816 (12)	S-19

HRMS/MS data

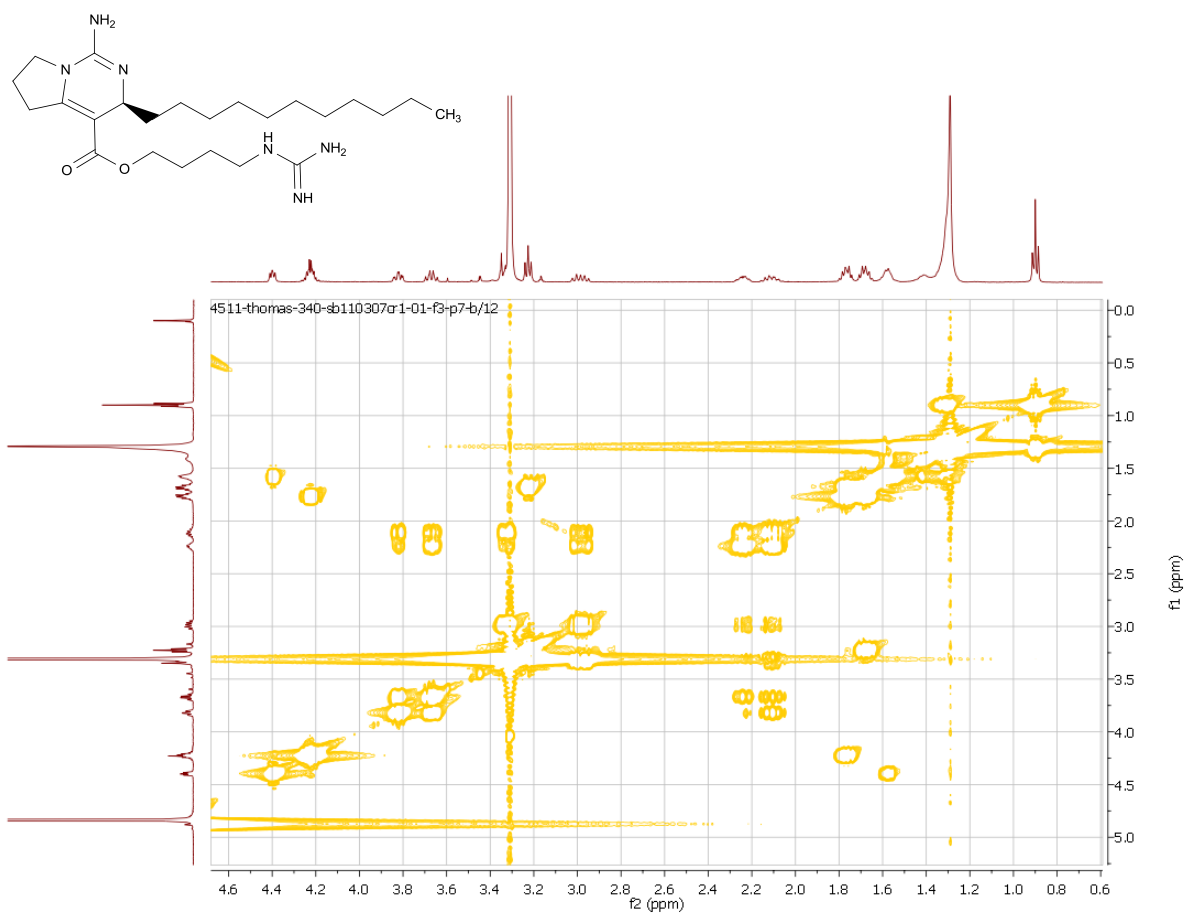
HRMS/MS spectra of crambescin A2 (1)	S-20
HRMS/MS spectra of crambescin A2 (2)	S-20
HRMS/MS spectra of crambescin A2 (3)	S-21
HRMS/MS spectra of crambescin A1 (4)	S-21
HRMS/MS spectra of didehydrocrambescin A1 (5)	S-22
HRMS/MS spectra of crambescin B1 (6)	S-22
HRMS/MS spectra of crambescin B1 (7)	S-23
HRMS/MS spectra of crambescin B1 (8)	S-23
HRMS/MS spectra of crambescin C1 (9)	S-24
HRMS/MS spectra of crambescin C1 (10)	S-24
HRMS/MS spectra of crambescin C1 (11)	S-25



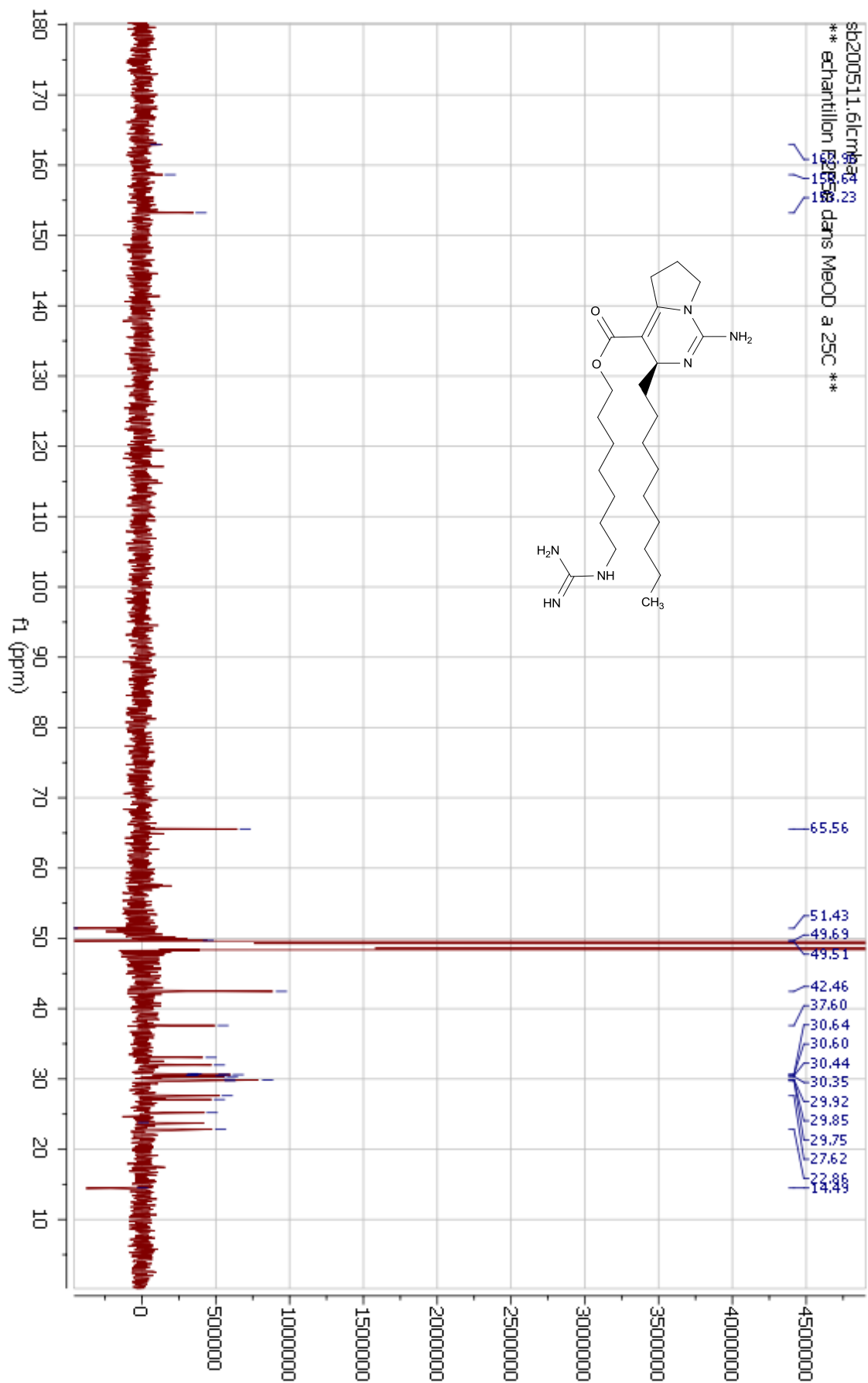
¹H NMR spectrum (500 MHz, CD₃OD) of crambescin A2 (1)



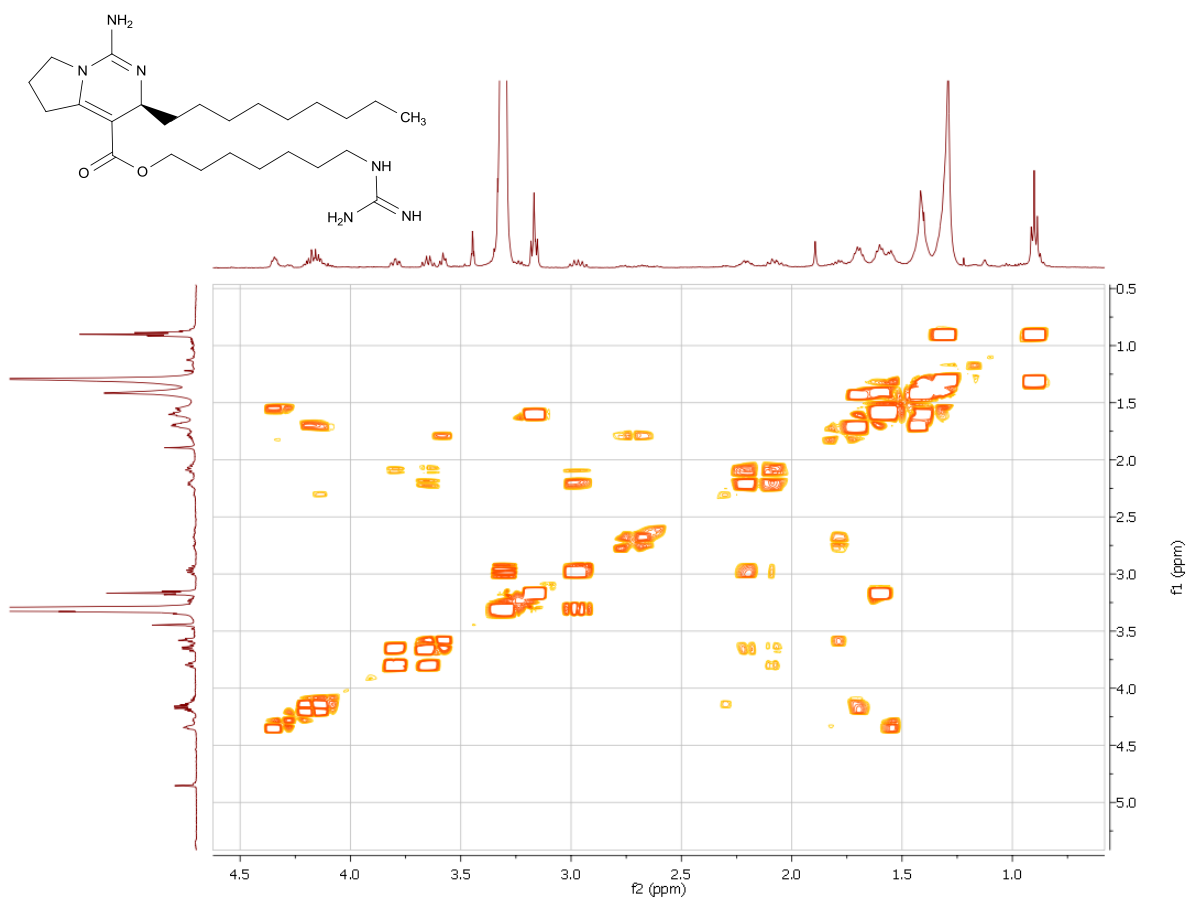
¹³C NMR spectrum (125 MHz, CD₃OD) of crambescin A2 (1)



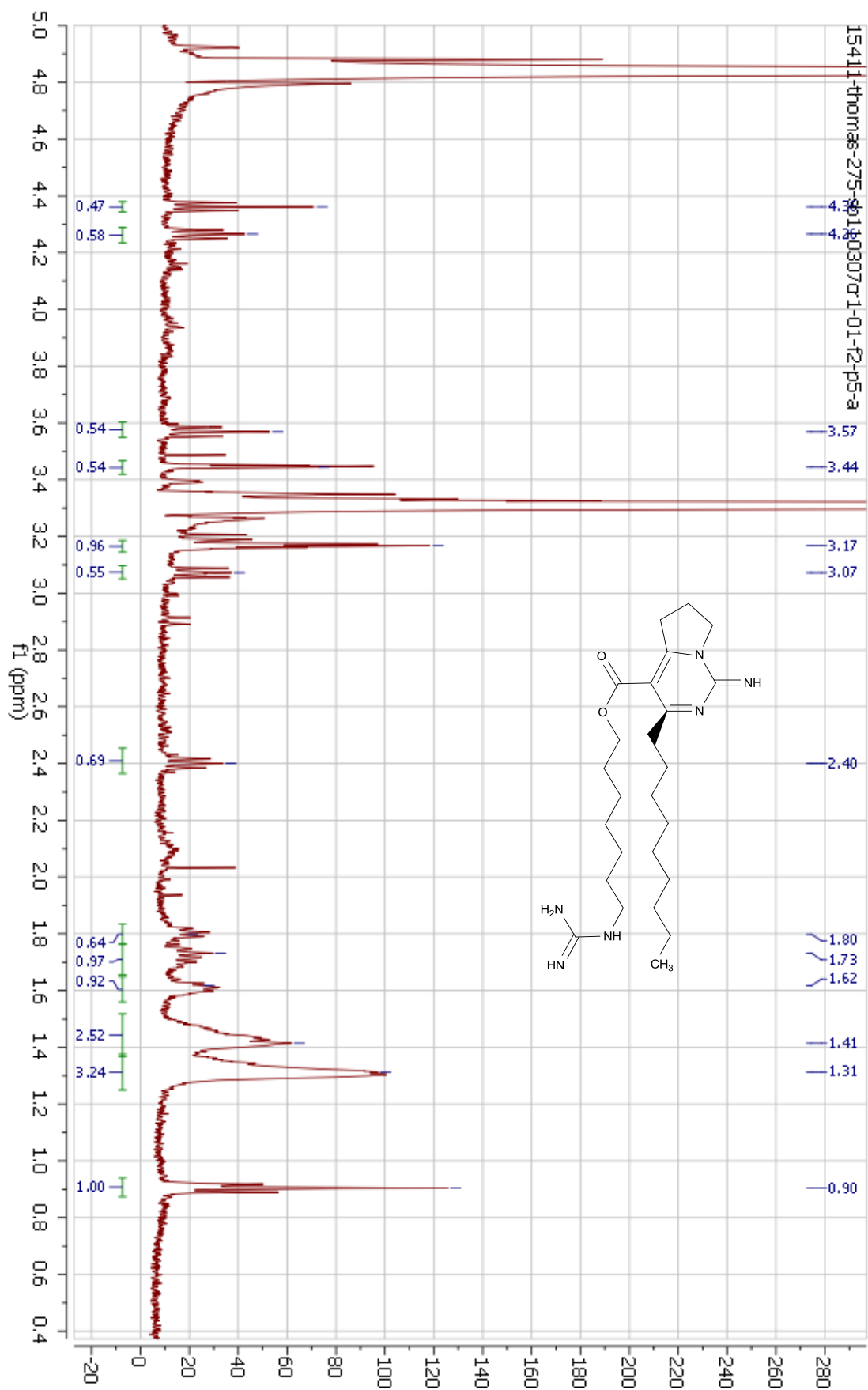
^1H - ^1H COSY spectrum (500 MHz, CD_3OD) of crambescin A2 (1)



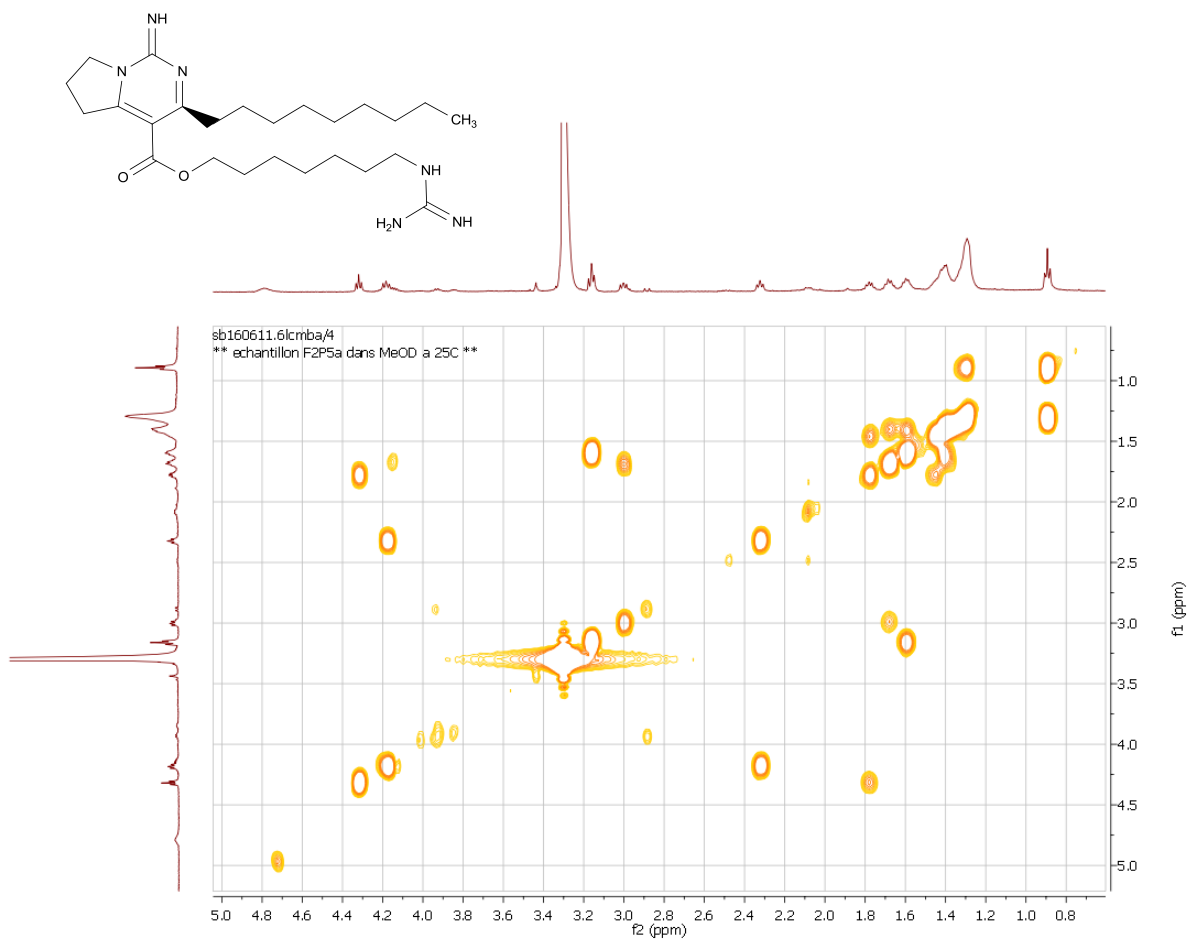
^{13}C NMR spectrum (125 MHz, CD_3OD) of crambescin A1 (4)



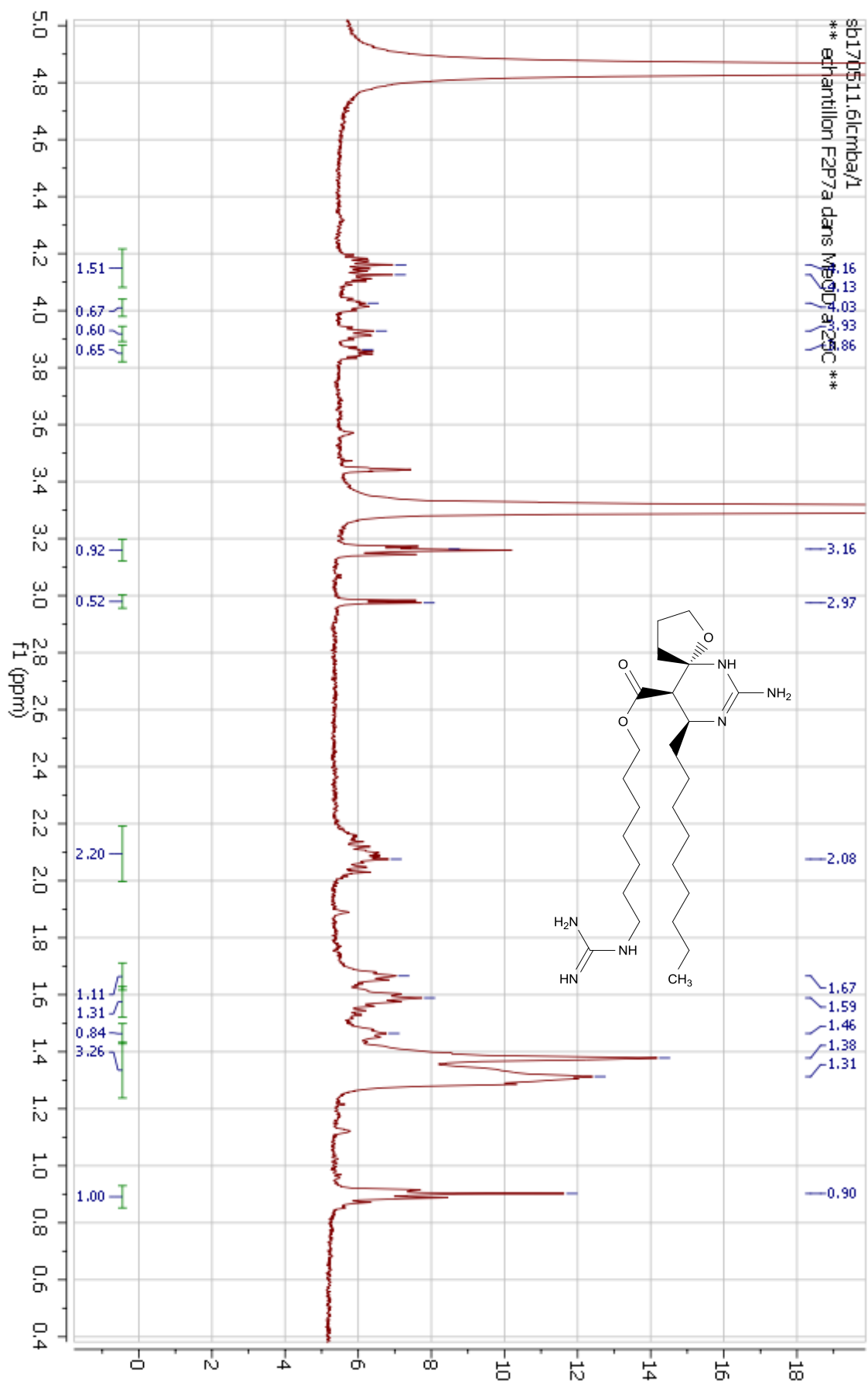
¹H-¹H COSY spectrum (500 MHz, CD₃OD) of crambescin A1 (4)



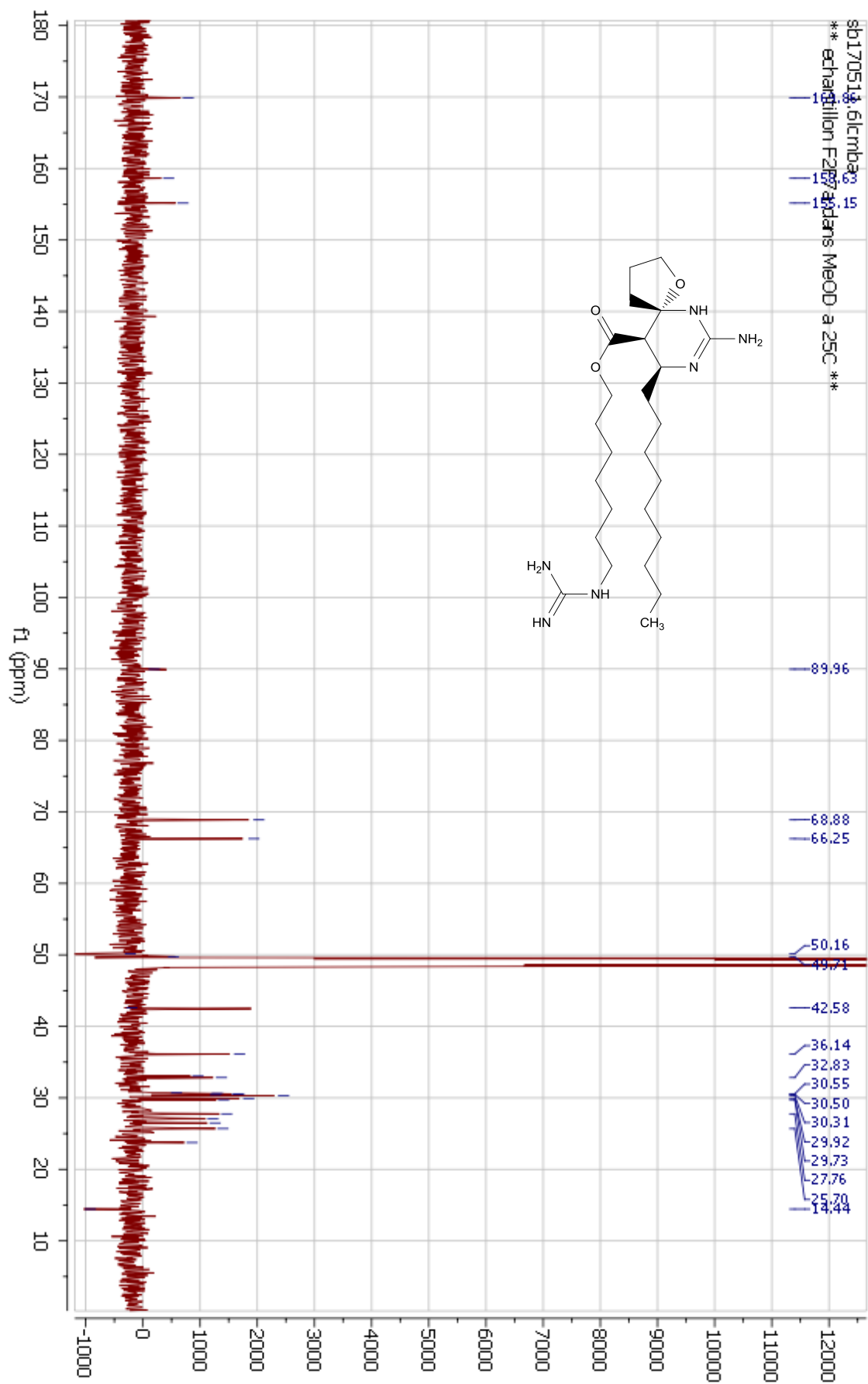
^1H NMR spectrum (500 MHz, CD_3OD) of didehydrocrambescin A1 (5)



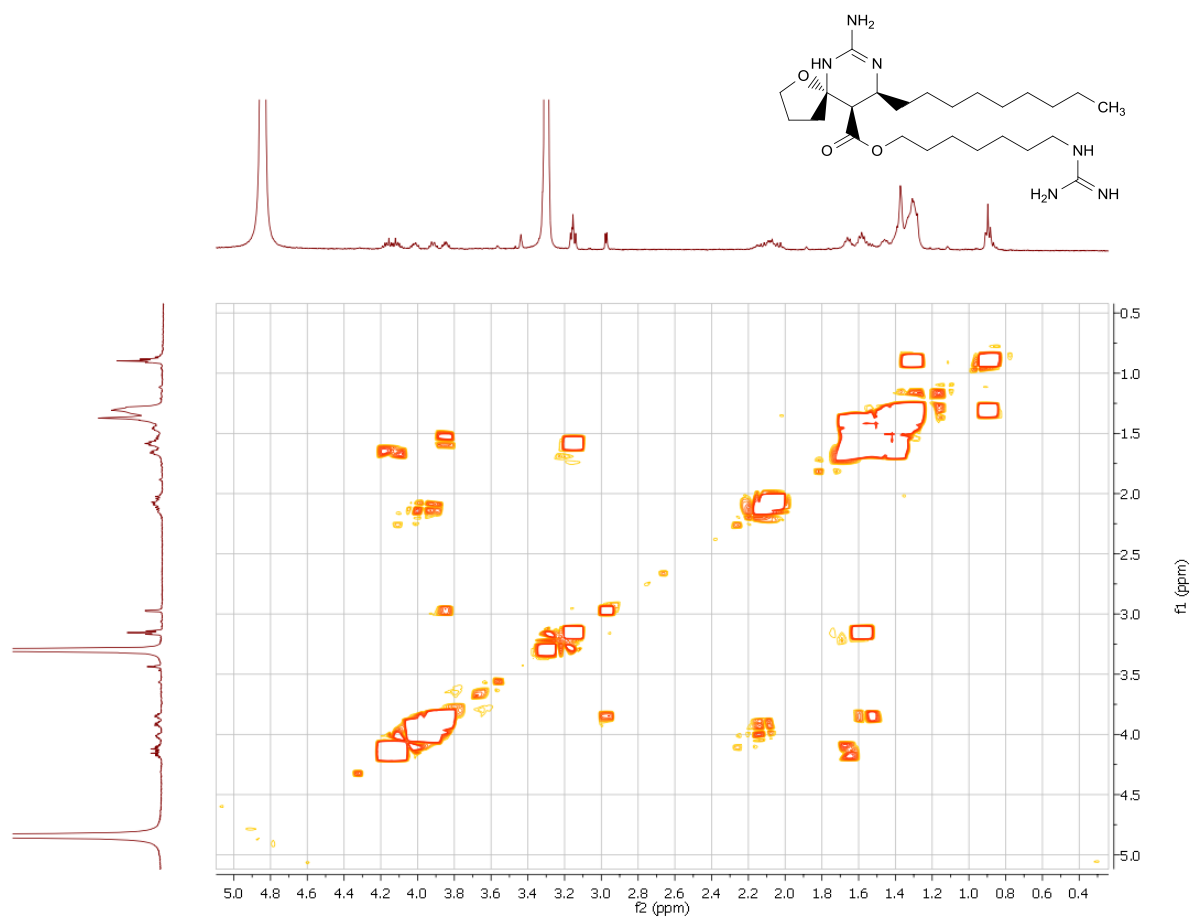
^1H - ^1H COSY spectrum (500 MHz, CD₃OD) of didehydrocrambescin A1 (5)



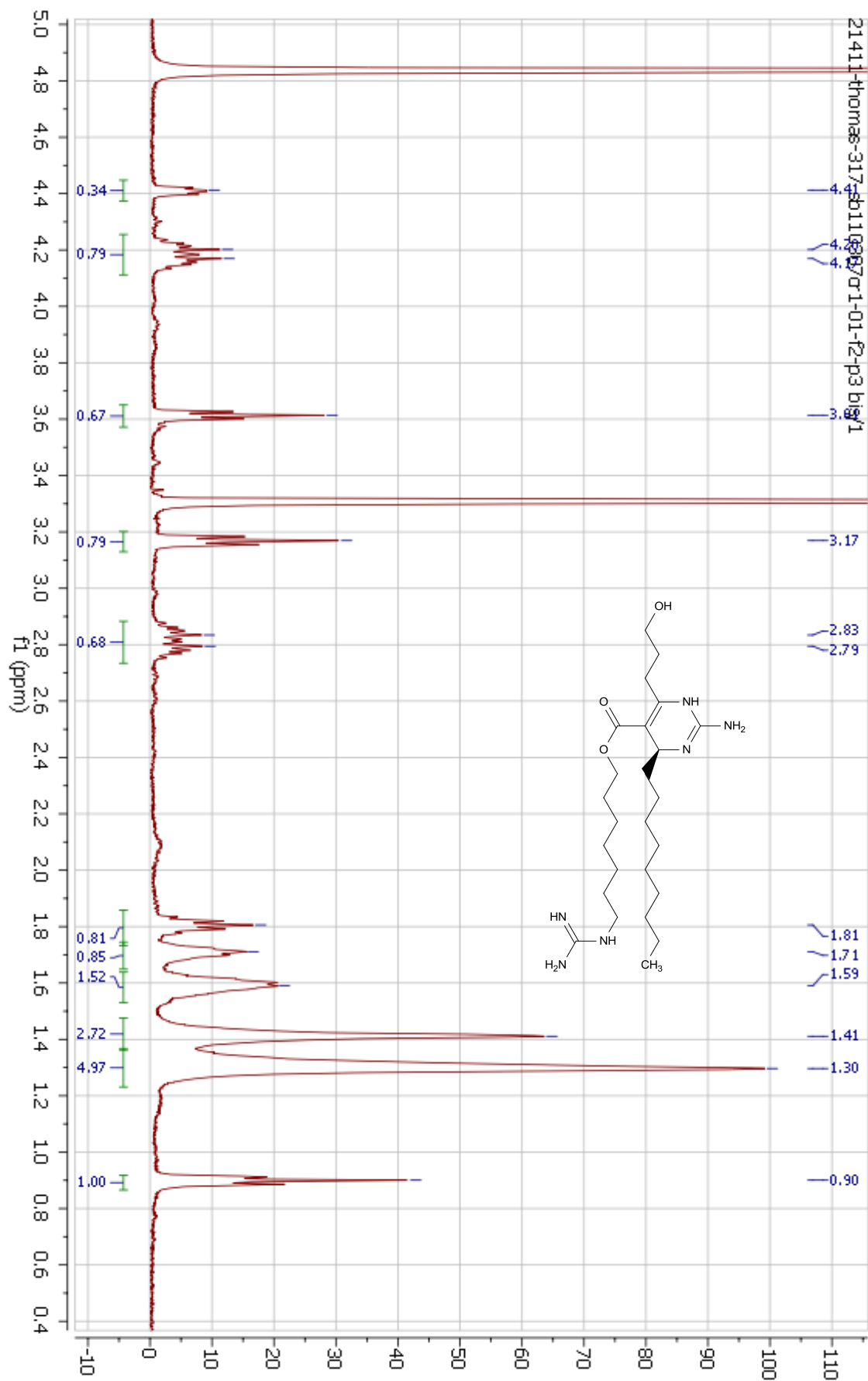
¹H NMR spectrum (500 MHz, CD₃OD) of crambescin B1 (7)



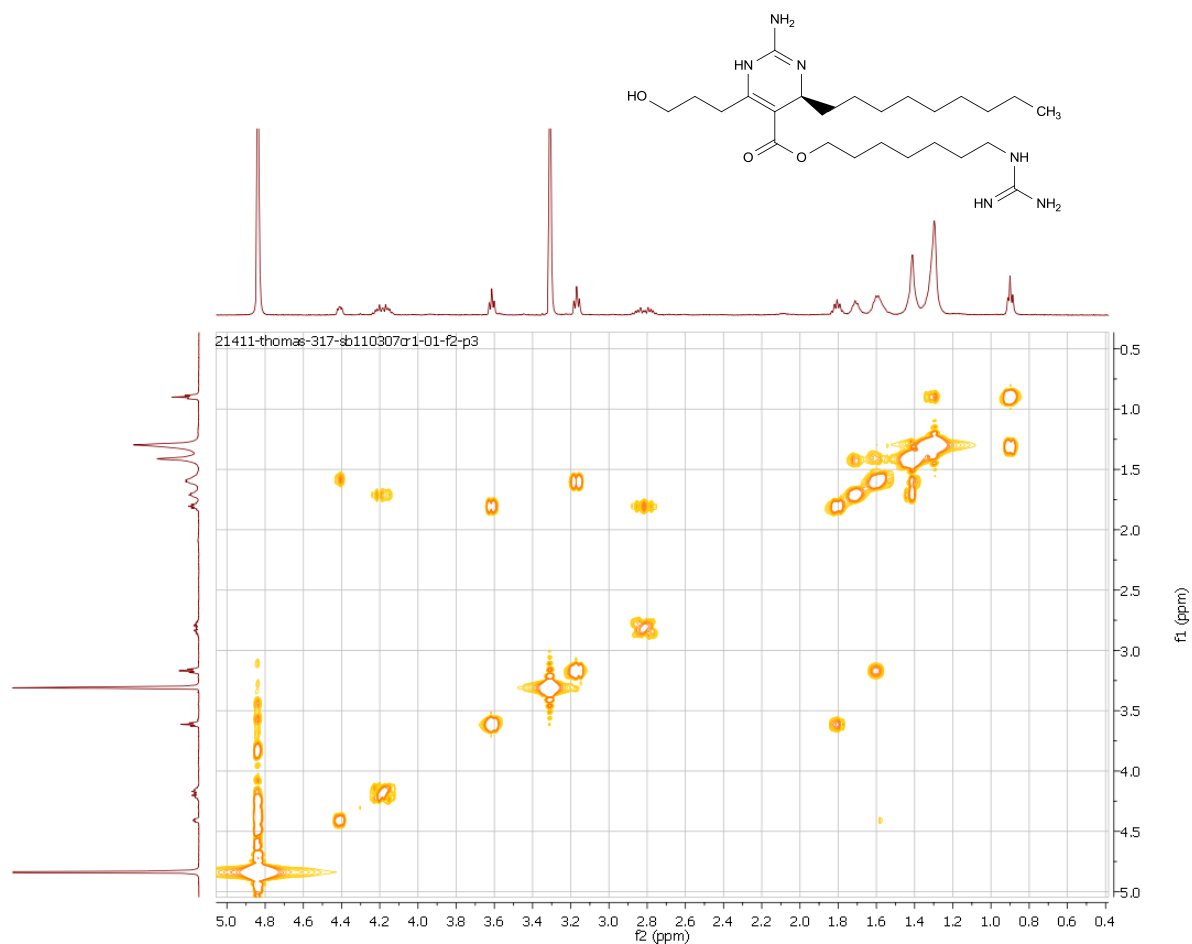
¹³C NMR spectrum (125 MHz, CD₃OD) of crambescin B1 (7)



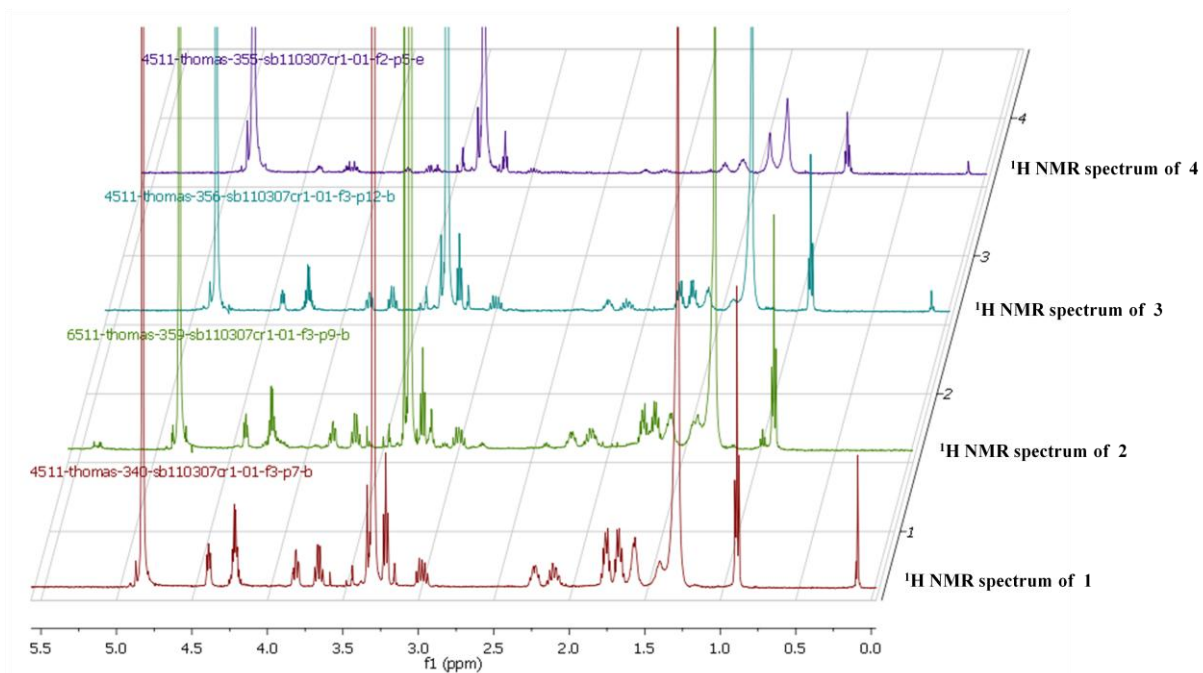
^1H - ^1H COSY spectrum (500 MHz, CD_3OD) of crambescin B1 (7)



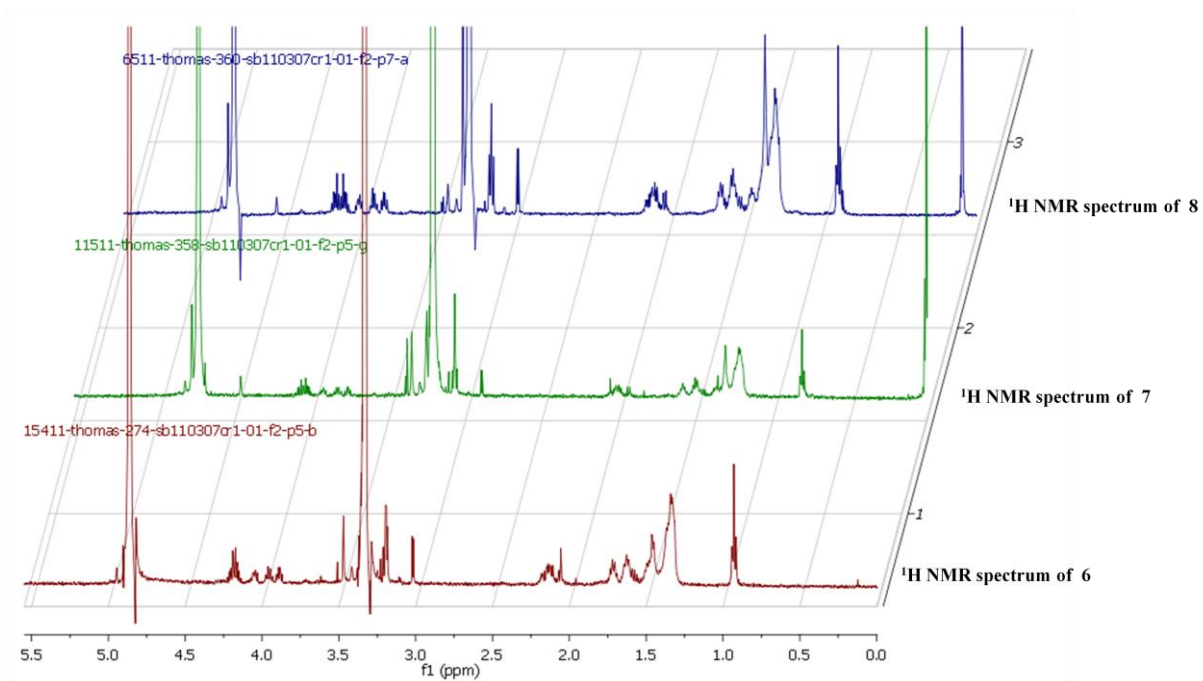
¹H NMR spectrum (500 MHz, CD₃OD) of crambescin C1 (10)



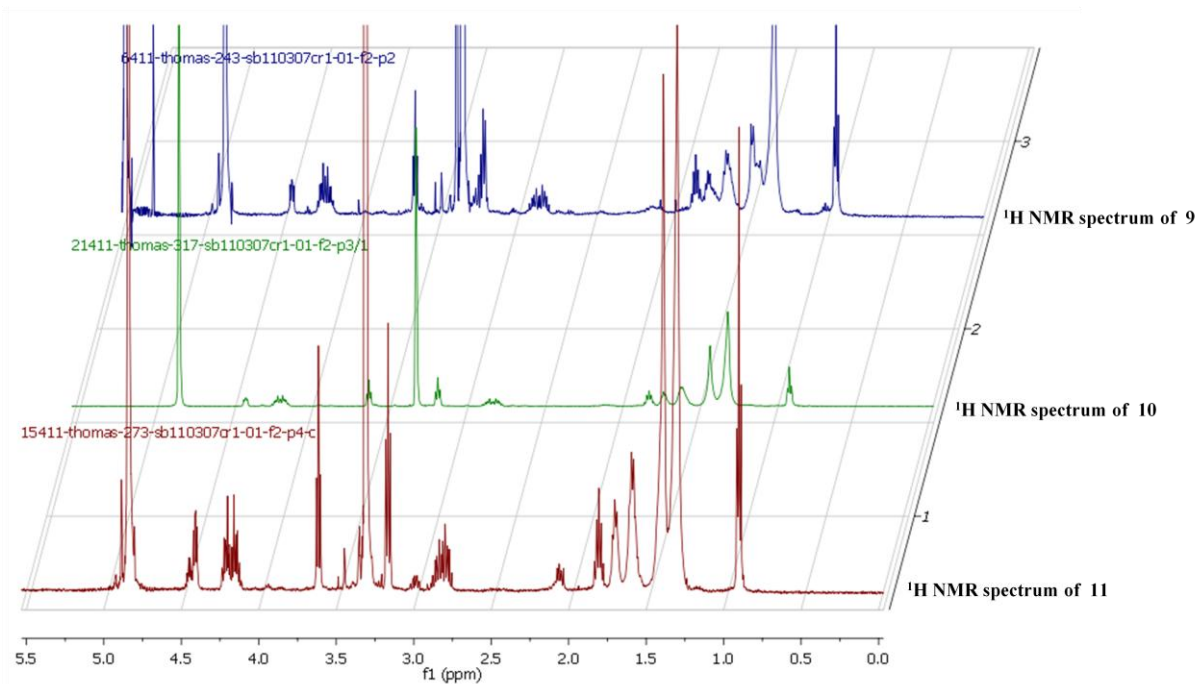
¹H-¹H COSY spectrum (500 MHz, CD₃OD) of crambescin C1 (10)



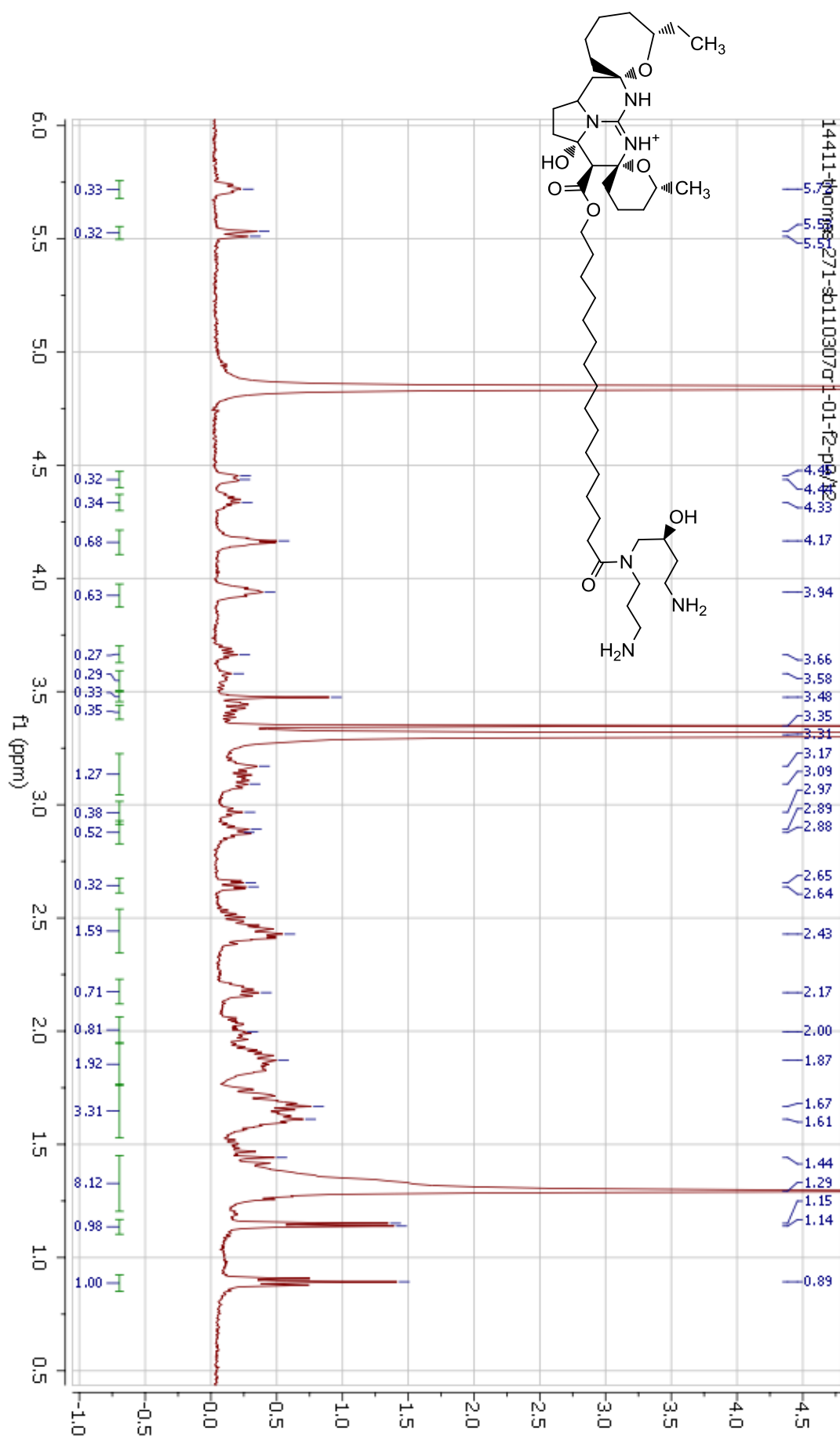
¹H NMR spectra of crambescins A2 (1-3) and crambescin A1 (4)



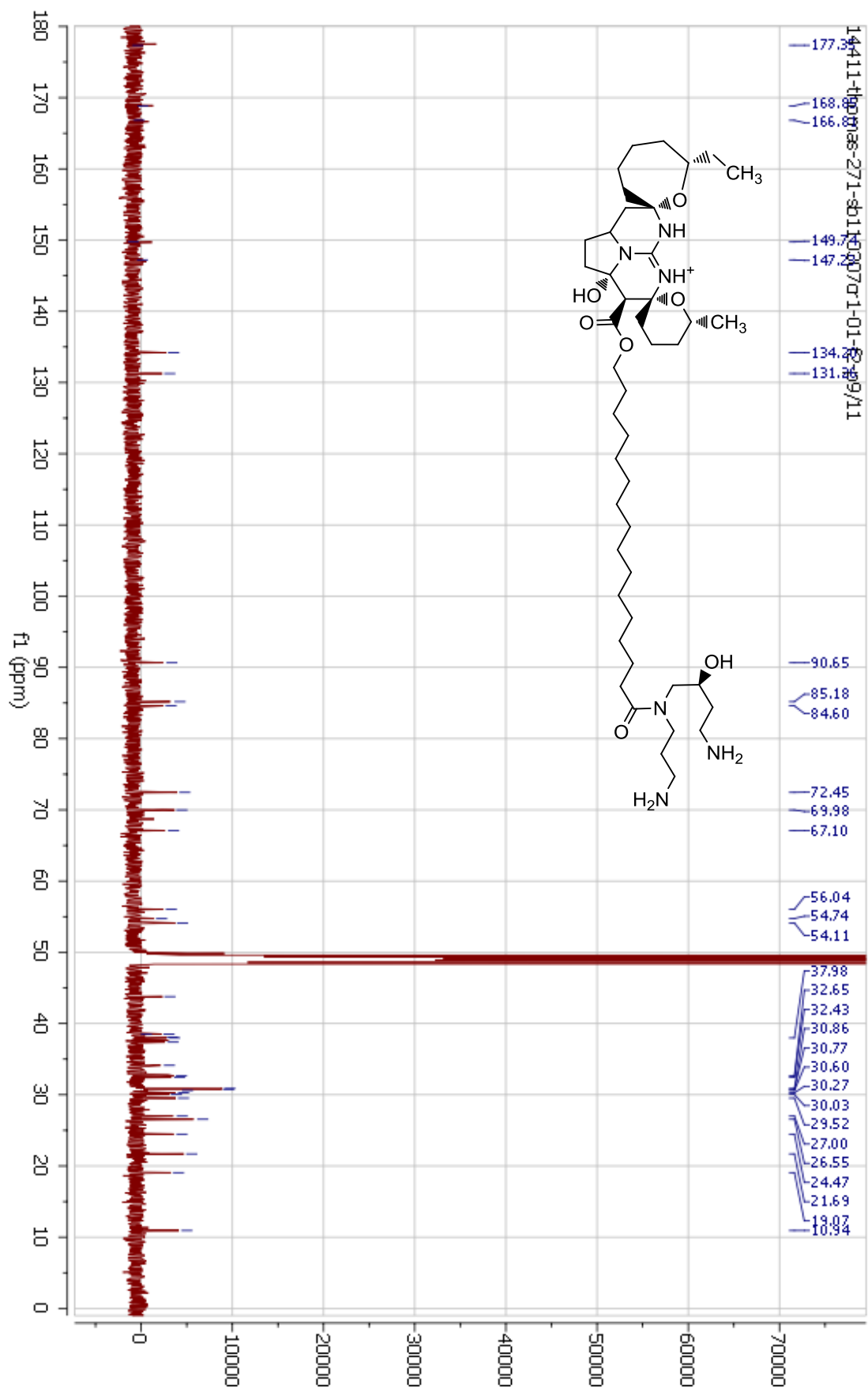
¹H NMR spectra of crambescins B1 (6-8)



¹H NMR spectra of crambescins C1 (9-11)

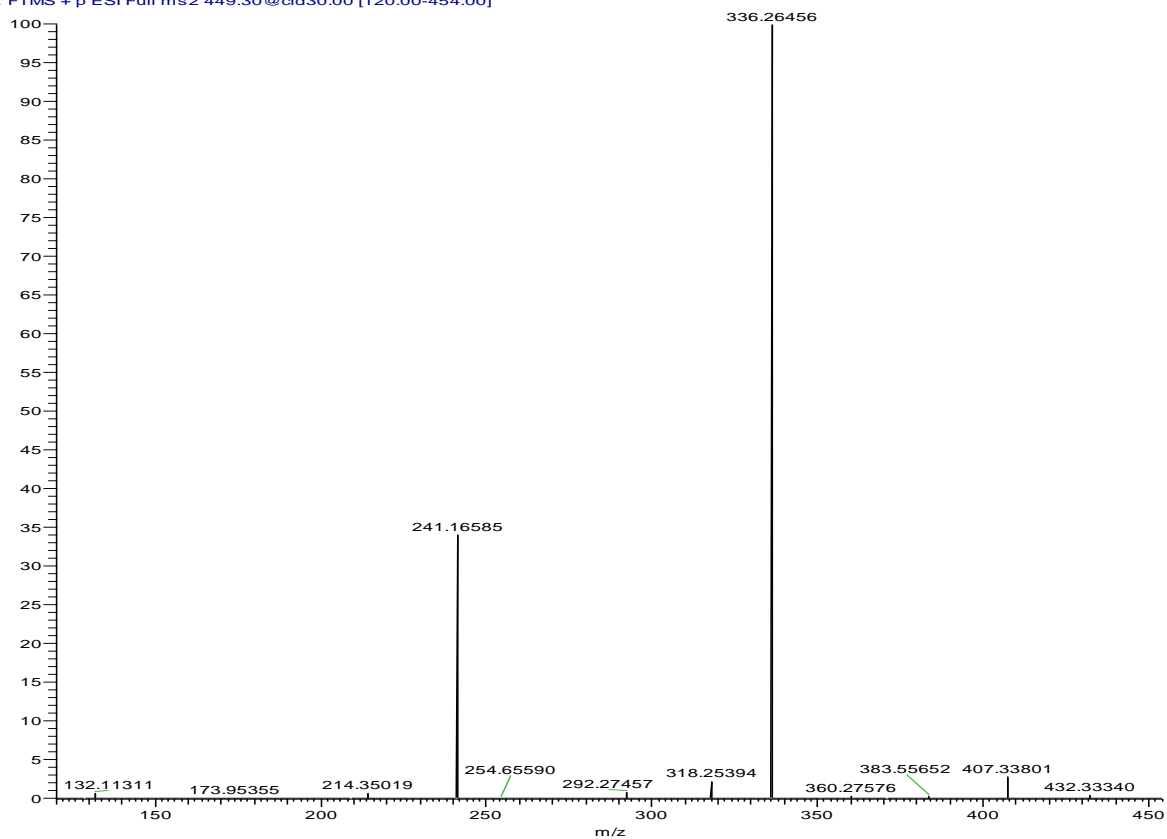


¹H NMR spectrum of crambescidin 816 (12)



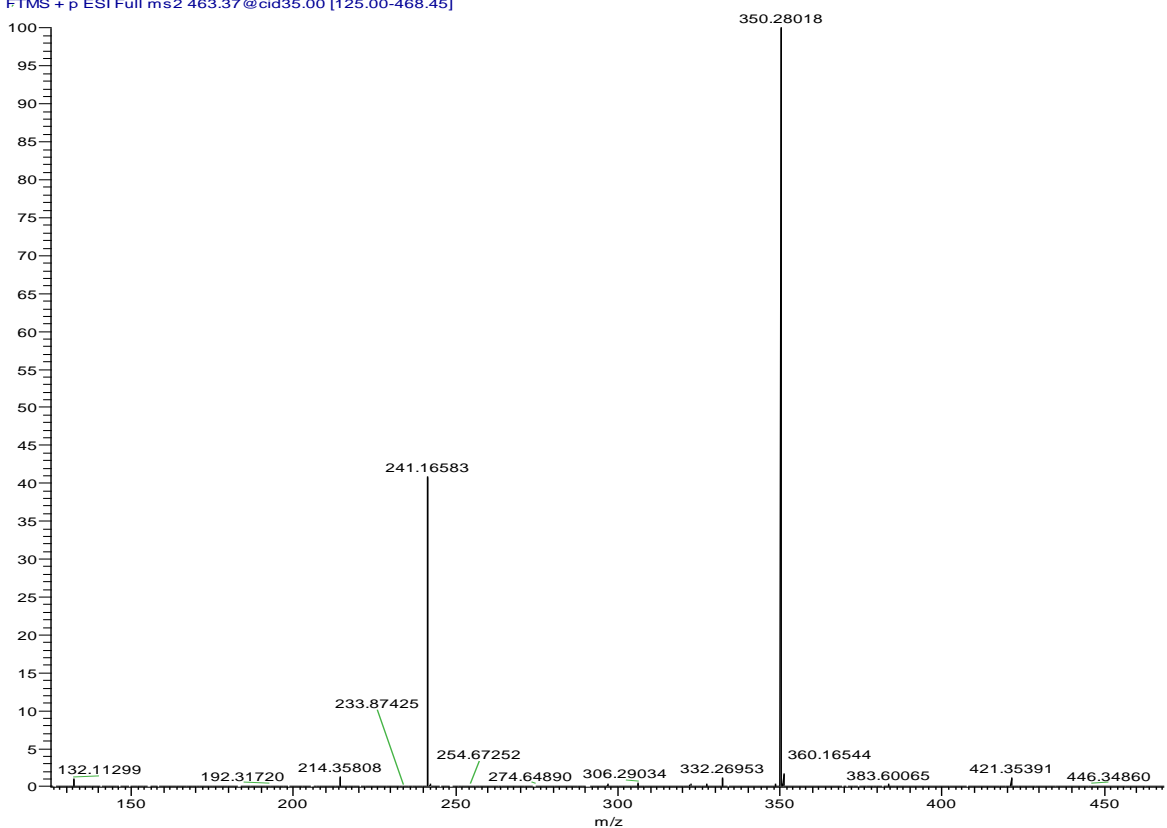
¹³C NMR spectrum of crambescidin 816 (12)

OTH_110803123213 #5 RT: 0.05 AV: 1 NL: 2.35E7
T: FTMS + p ESI Full ms2 449.30@cid30.00 [120.00-454.00]



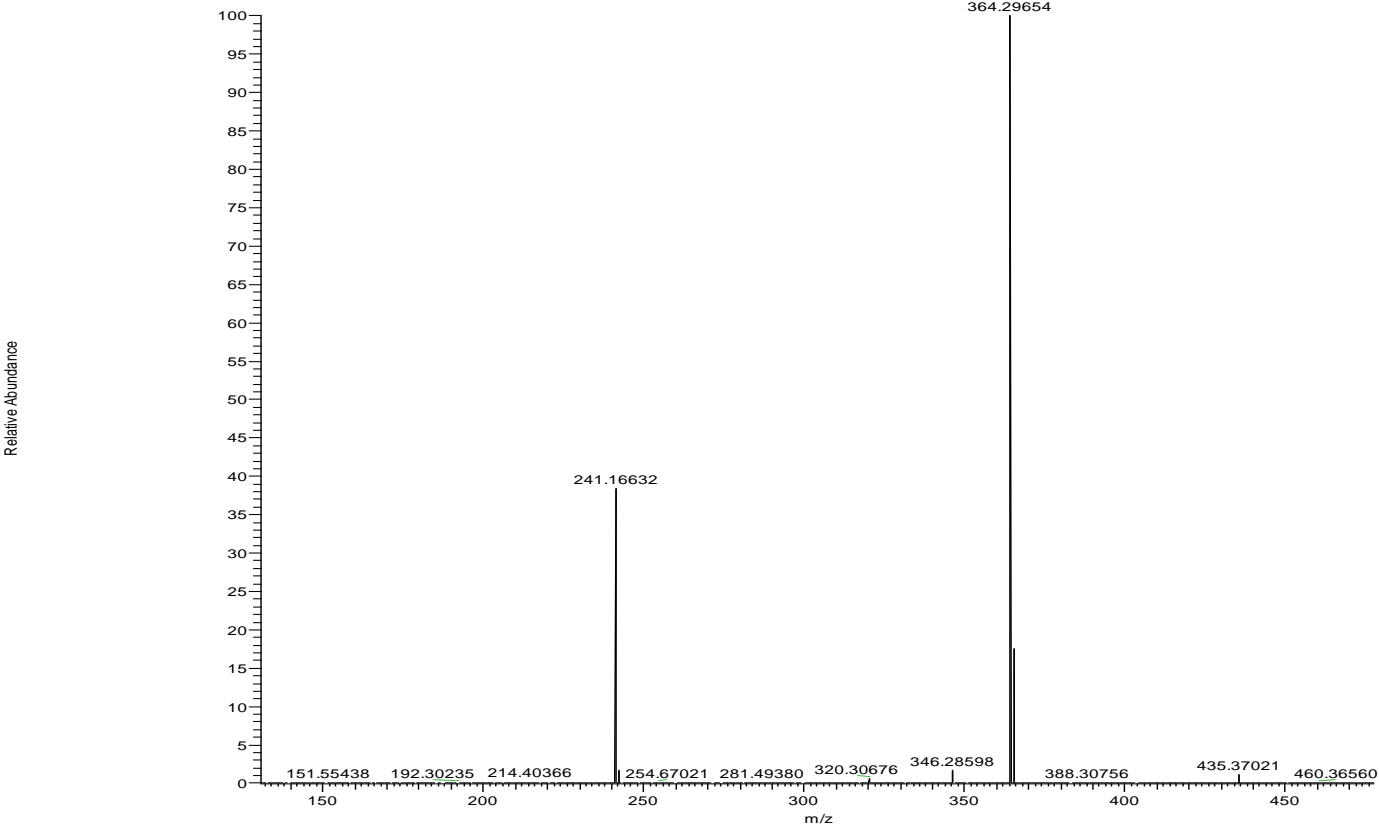
HRMS/MS spectrum of crambescin A2 (1)

OTH_110708181022 #2 RT: 0.05 AV: 1 NL: 8.71E6
T: FTMS + p ESI Full ms2 463.37@cid35.00 [125.00-468.45]



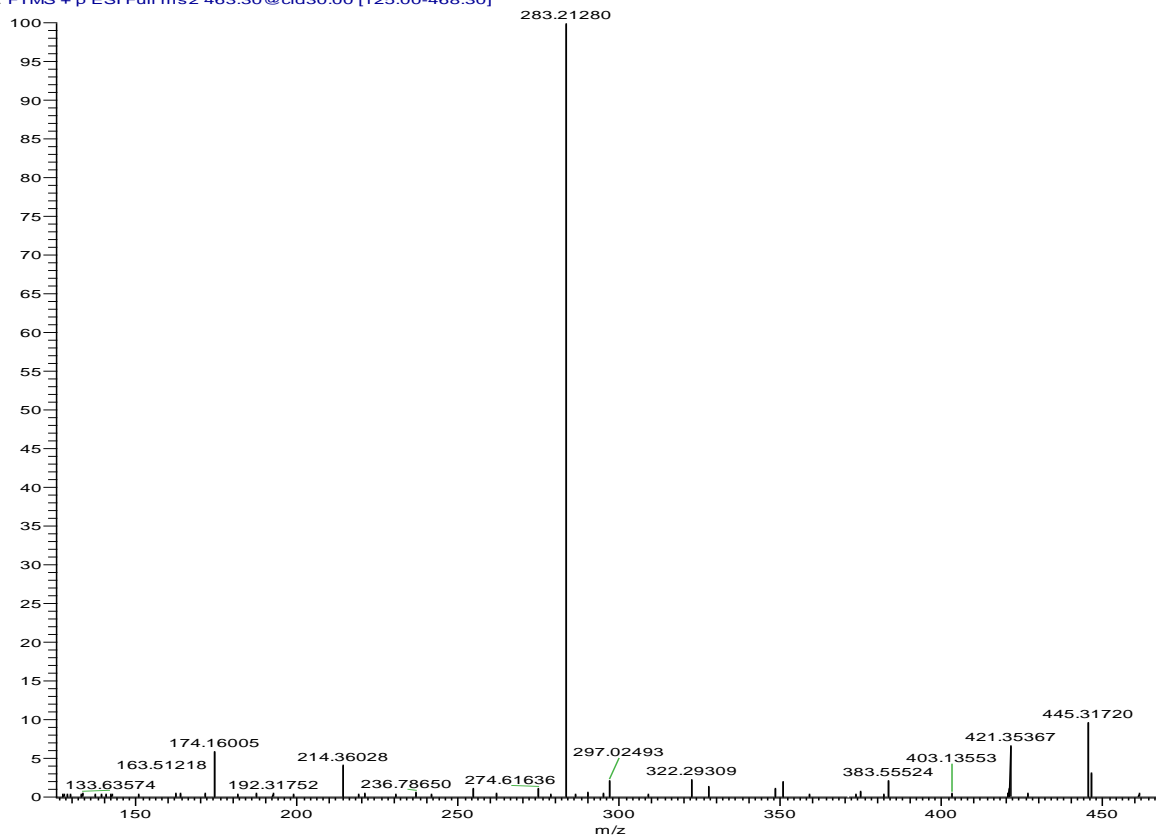
HRMS/MS spectrum of crambescin A2 (2)

OTH_110708161737 #2 RT: 0.04 AV: 1 NL: 1.76E6
T: FTMS + p ESI Full ms2 477.30@cid35.00 [130.00-482.30]



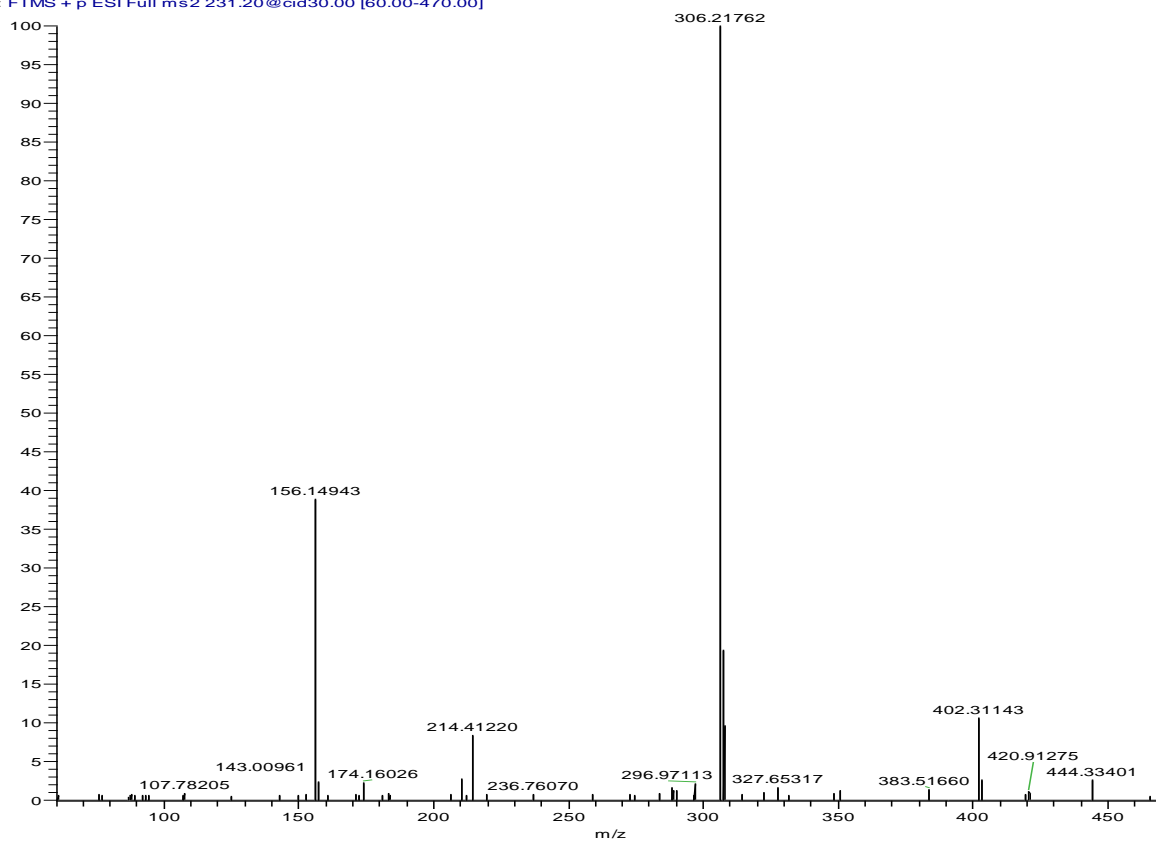
HRMS/MS spectrum of crambescin A2 (3)

OTH_110803125128 #5 RT: 0.05 AV: 1 NL: 2.94E6
T: FTMS + p ESI Full ms2 463.30@cid30.00 [125.00-468.30]



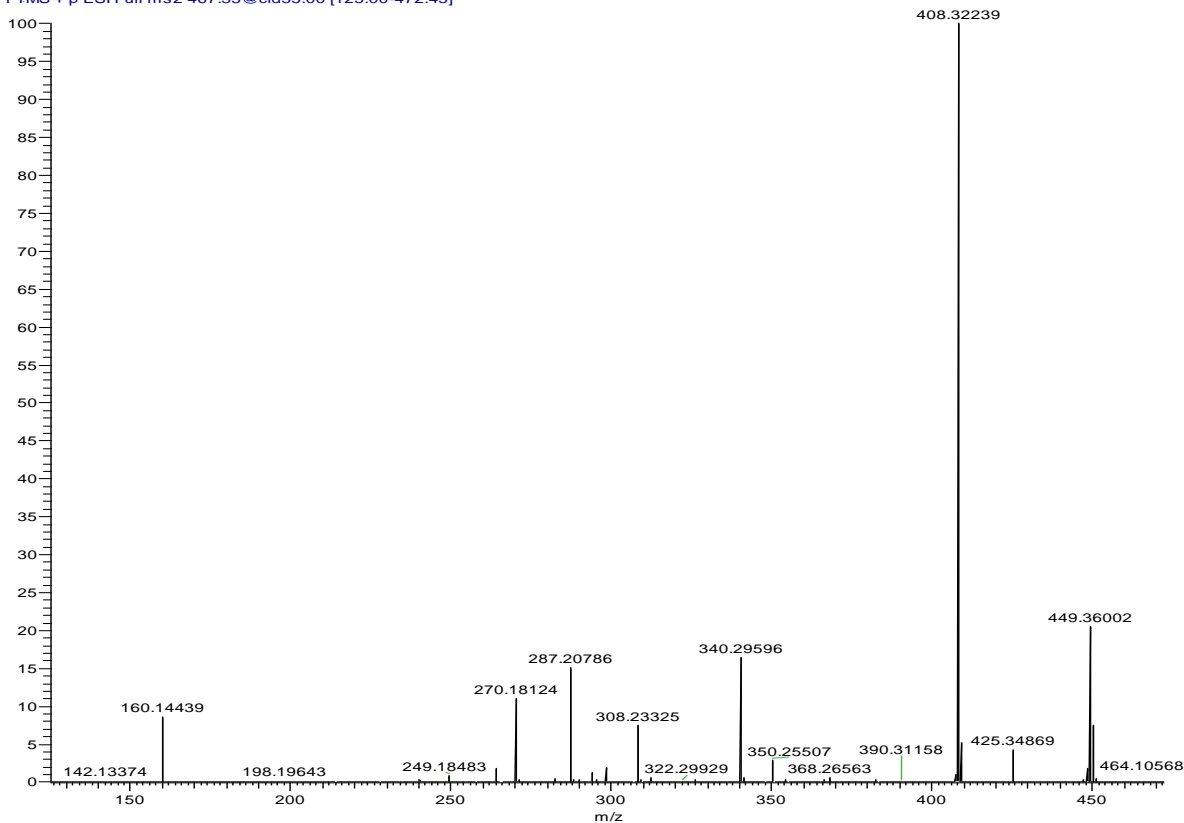
HRMS/MS spectrum of crambescin A1 (4)

OTH_110913164654 #8 RT: 0.07 AV: 1 NL: 1.27E5
T: FTMS + p ESI Full ms2 231.20@cid30.00 [60.00-470.00]



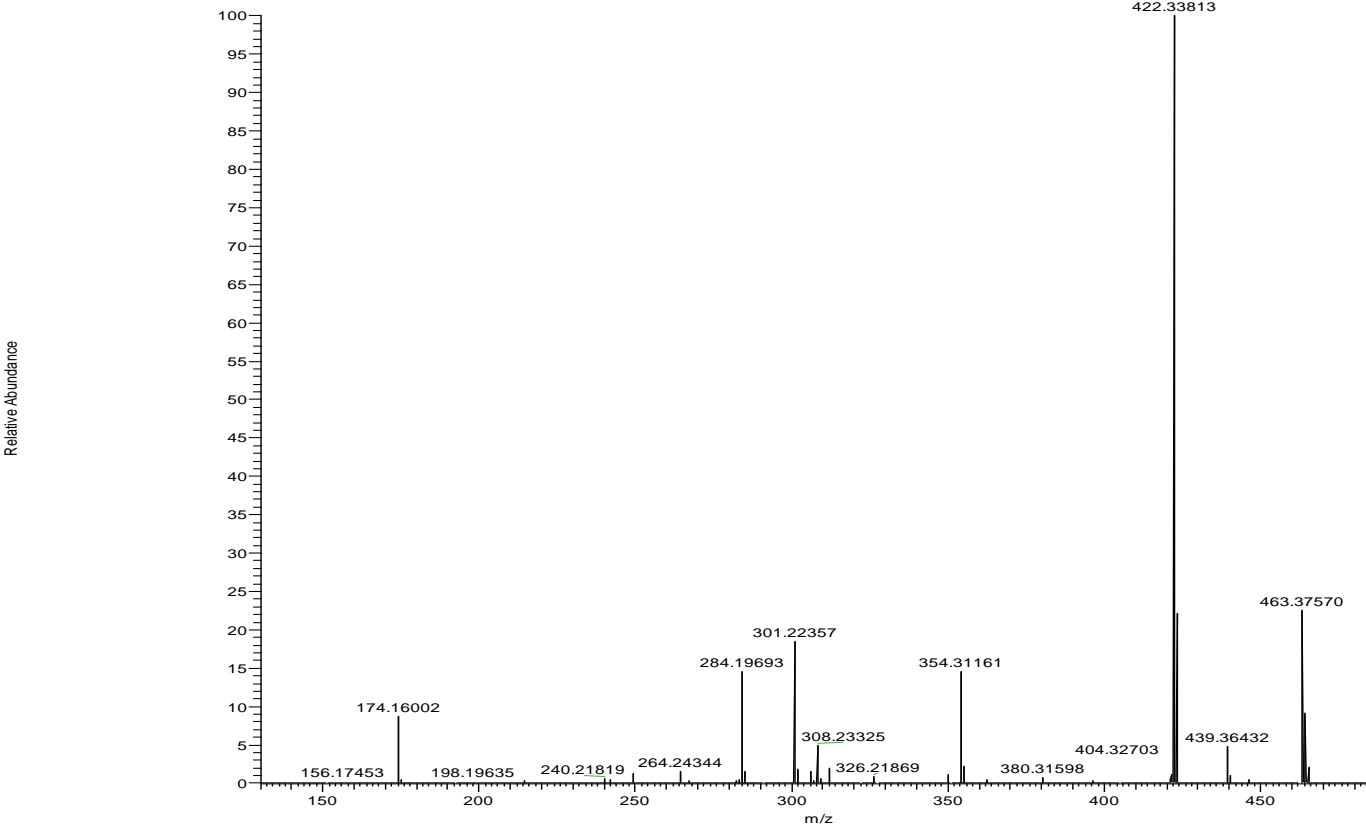
HRMS/MS spectrum of didehydrocrambescin A1 (5)

OTH_110708171926 #4 RT: 0.04 AV: 1 NL: 5.80E6
T: FTMS + p ESI Full ms2 467.35@cid35.00 [125.00-472.45]



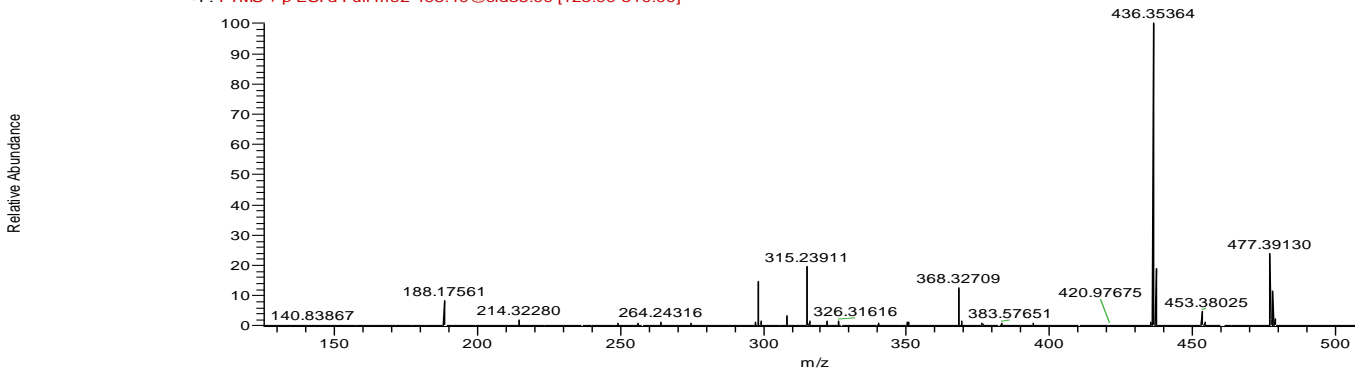
HRMS/MS spectrum of crambescin B1 (6)

OTH_110708170525 #4 RT: 0.04 AV: 1 NL: 1.22E7
T: FTMS + p ESI Full ms2 481.30@cid35.00 [130.00-486.40]



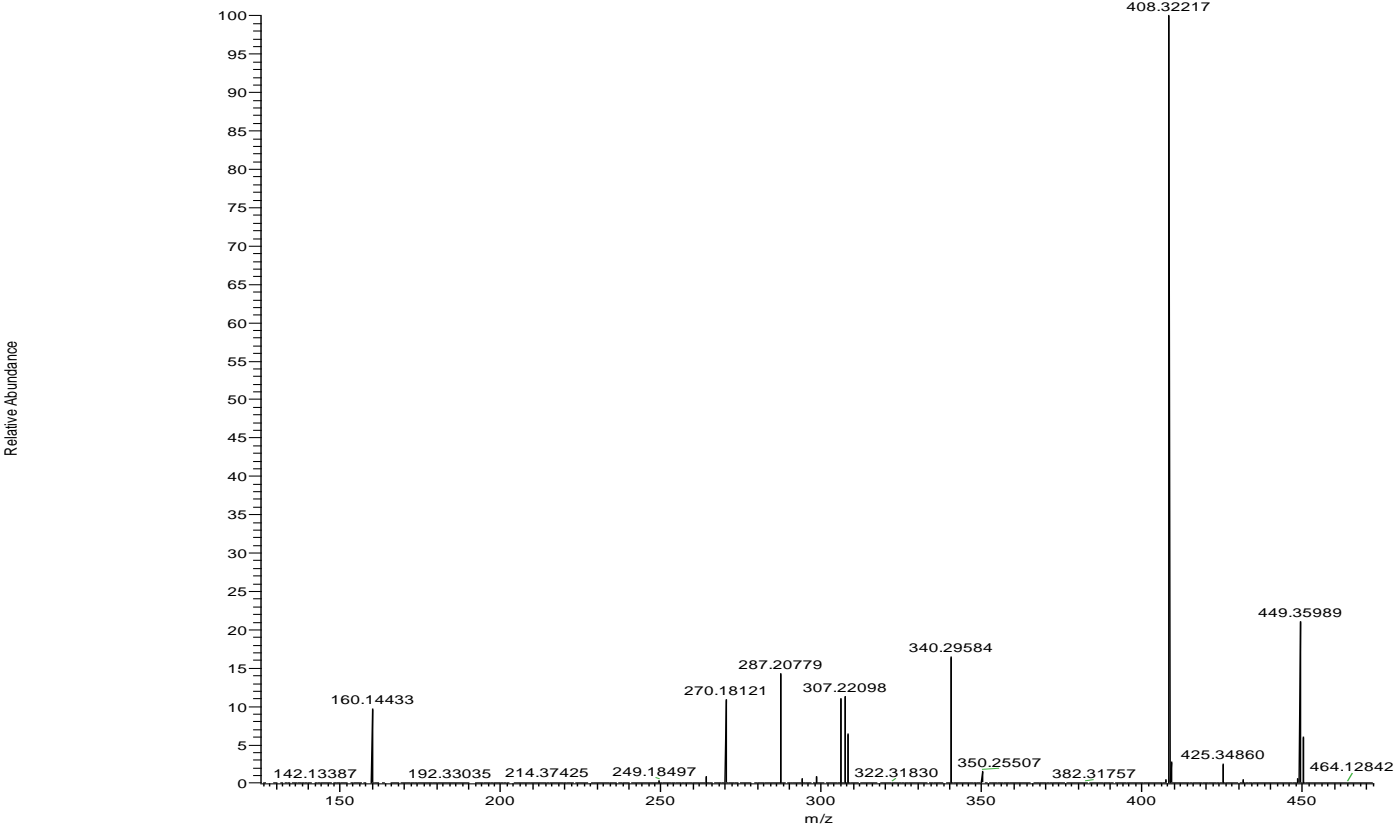
HRMS/MS spectrum of crambescin B1 (7)

080711OTH01 #132 RT: 2.03 AV: 1 NL: 1.26E6
F: FTMS + p ESI d Full ms2 495.40@cid35.00 [125.00-510.00]



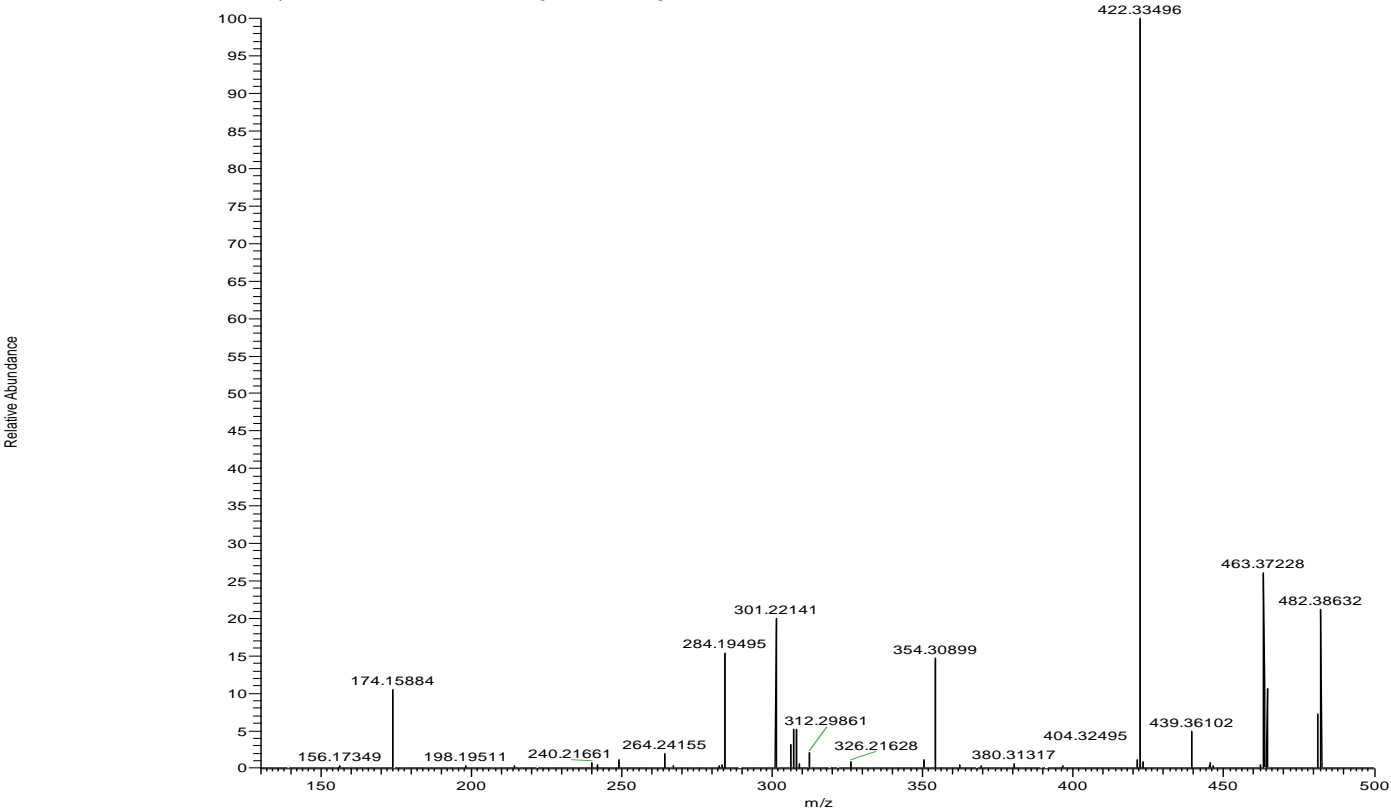
HRMS/MS spectrum of crambescin B1 (8)

OTH_110708175541 #2 RT: 0.03 AV: 1 NL: 4.24E6
T: FTMS + p ESI Full ms2 467.37@cid35.00 [125.00-472.36]



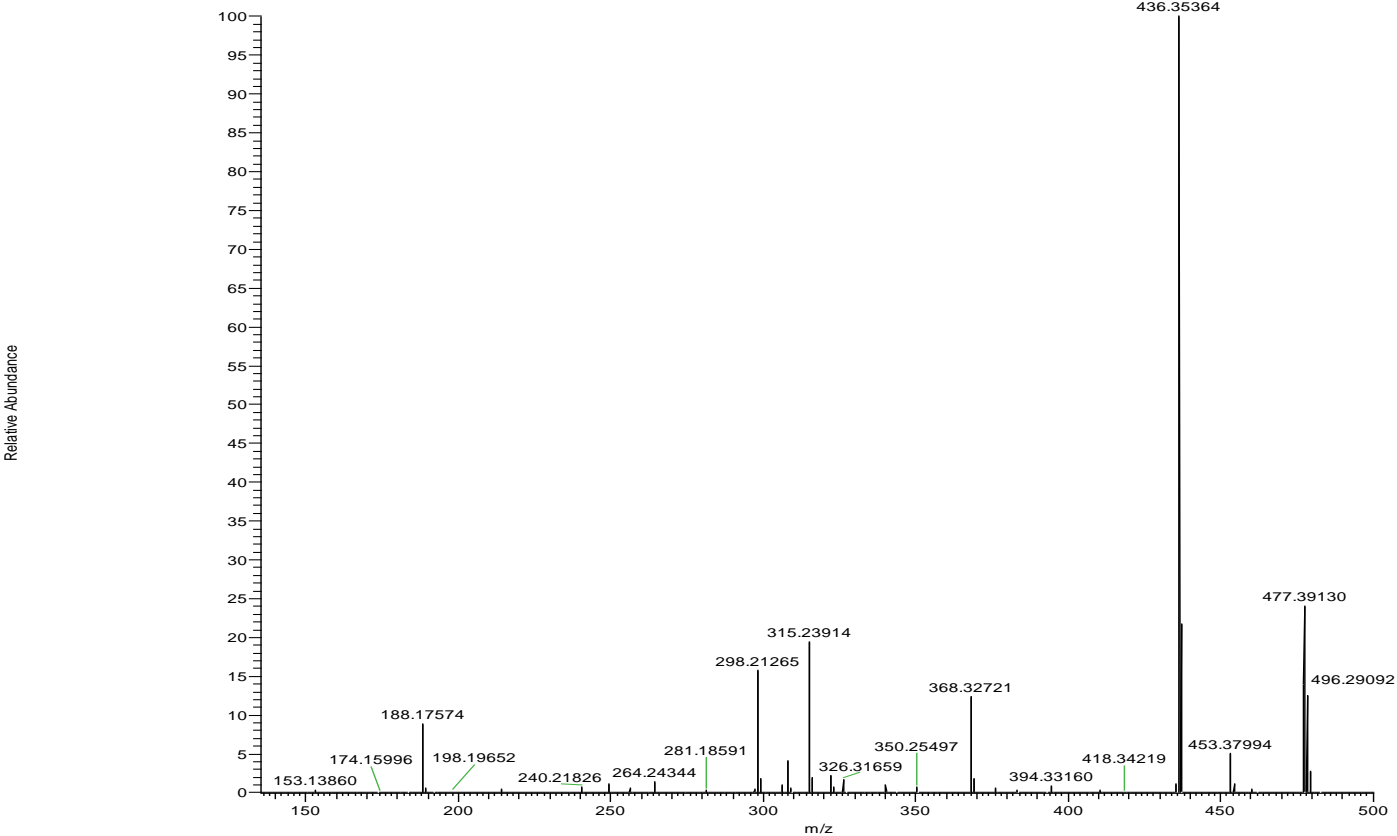
HRMS/MS spectrum of crambescin C1 (9)

OTH_110704183839 #4 RT: 0.04 AV: 1 NL: 1.80E7
T: FTMS + p ESI Full ms2 481.38@cid25.00 [130.00-500.00]



HRMS/MS spectrum of crambescin C1 (10)

OTH_110708164747 #3 RT: 0.03 AV: 1 NL: 1.35E7
T: FTMS + p ESI Full ms2 495.40@cid35.00 [135.00-500.40]



HRMS/MS spectrum of crambescin C1 (11)