

Supporting Information for:

Fabrication of magnetic drug-loaded polymeric composite nanofibres and their drug release characteristics

Authors: *Linge Wang et al.*

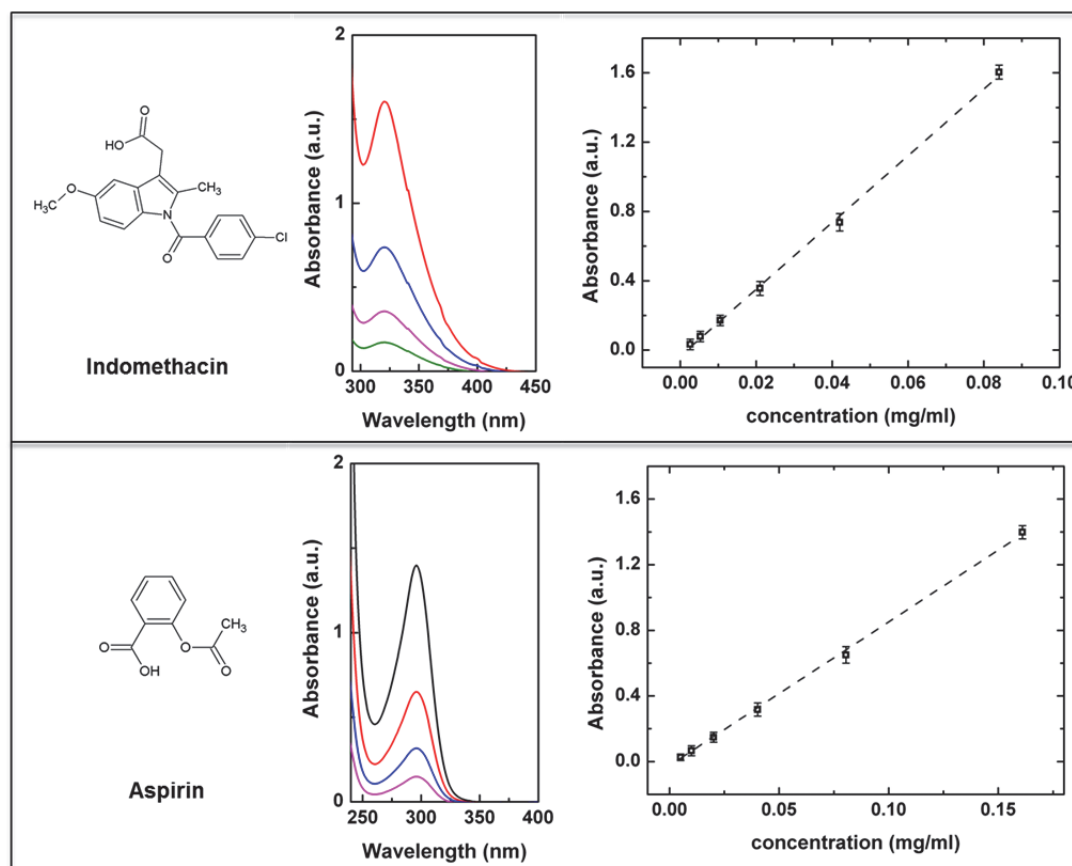


Figure S1. The calibration curves of indomethacin and aspirin released in the artificial intestinal juice.

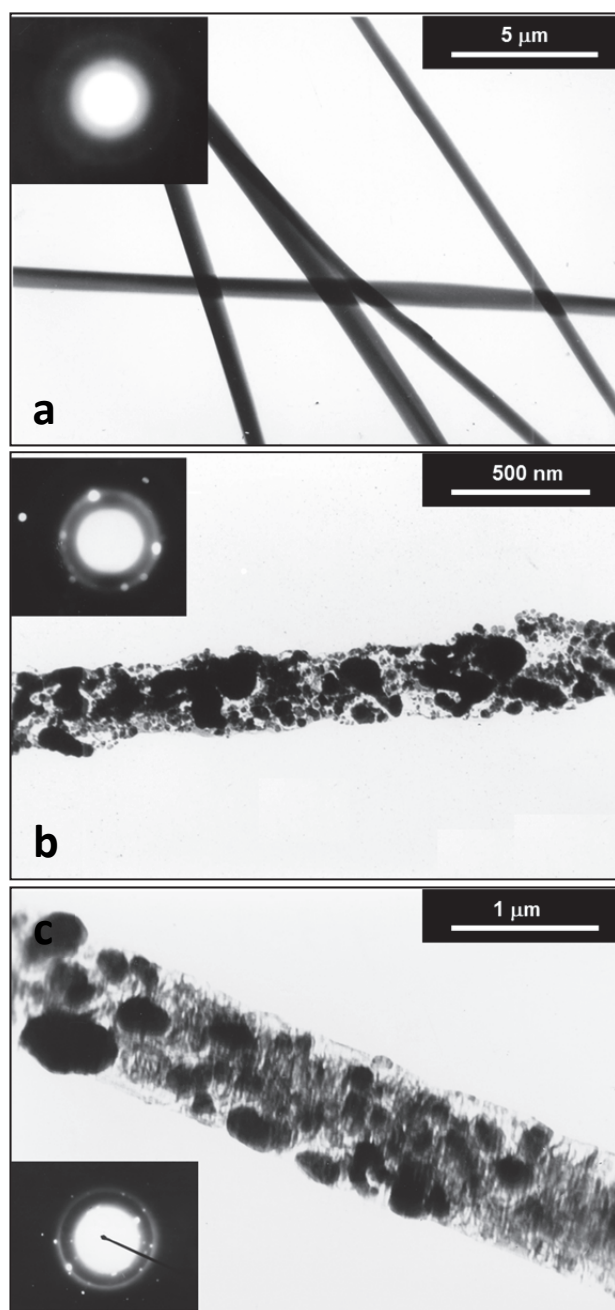


Figure S2. Typical TEM micrographs and the selected-area electron diffraction patterns of (a) the CA nanofibres, (b) the HPMCP/IDN/Fe₃O₄ nanofibres (9:1:9), and (c) the CA/aspirin/Fe₃O₄ nanofibres (9:1:9).

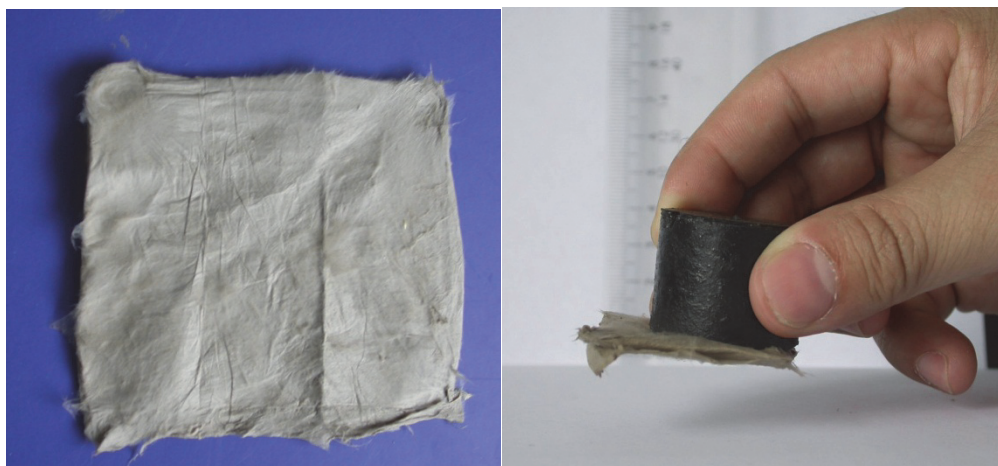


Figure S3. Electrospun fibre mat from HPMCP/IDN/Fe₃O₄ (9:1:9) solution, and a demonstration of the nanofibres attracted by a magnet.