

Single Crystal Structure Refinement of One- and Two-layer Hydrate of Sodium-Fluorohectorite

Hussein Kalo,^a Wolfgang Miliusa and Josef Breua^{*}

[†]Lehrstuhl für Anorganische Chemie I, Universität Bayreuth, D-95440 Bayreuth, Germany

Supporting Information:

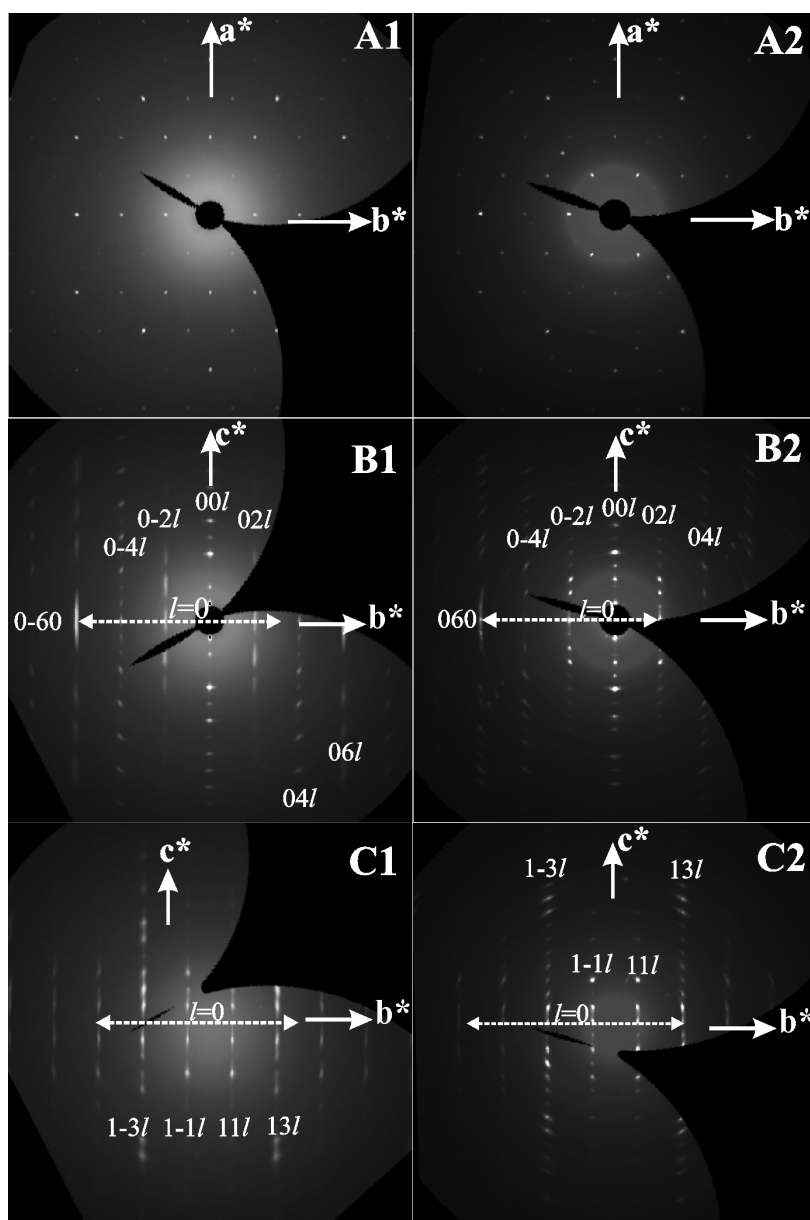


Fig. S1 Reciprocal lattice space of 1WL (A1, B1, C1) and 2WL (A2, B2, C2) hydrate. The images of $hk0$, $0kl$ and $1kl$ planes were created using the X-area software from STOE.

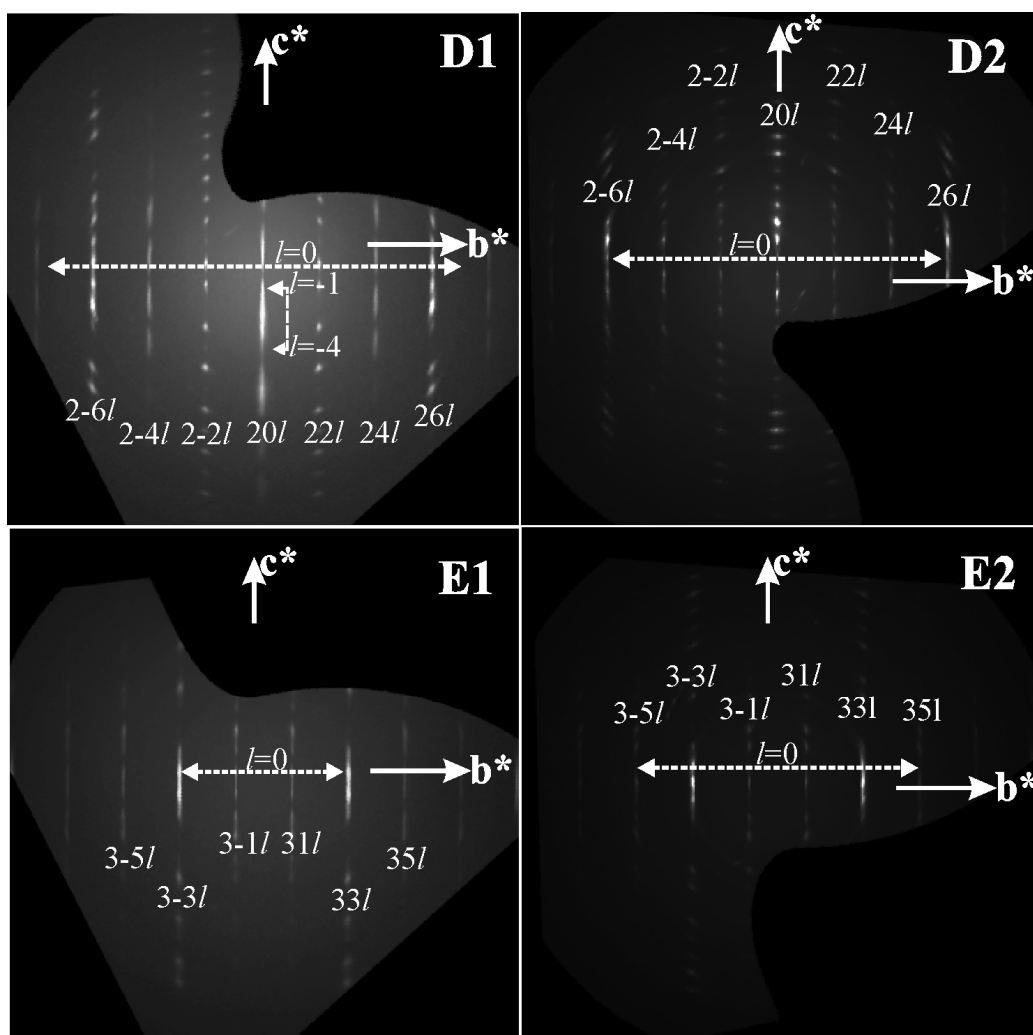


Fig. S2 Reciprocal lattice space of 1WL (D1, E1) and 2WL (D2, E2) hydrate. The images of $2kl$ and $3kl$ planes were created using the X-area software from STOE.

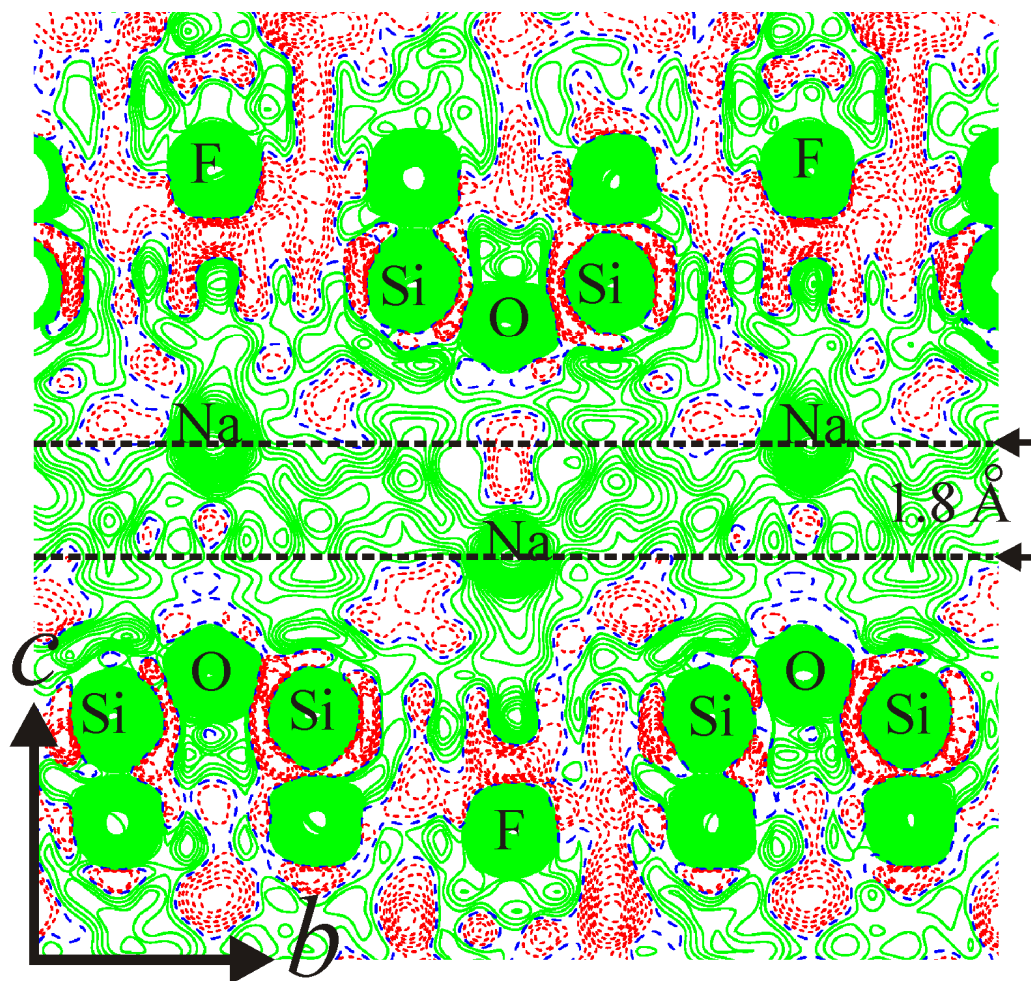


Fig. S3 Fo-map of 1WL of Na-hect projected along a. Prominent electron density peaks are labelled

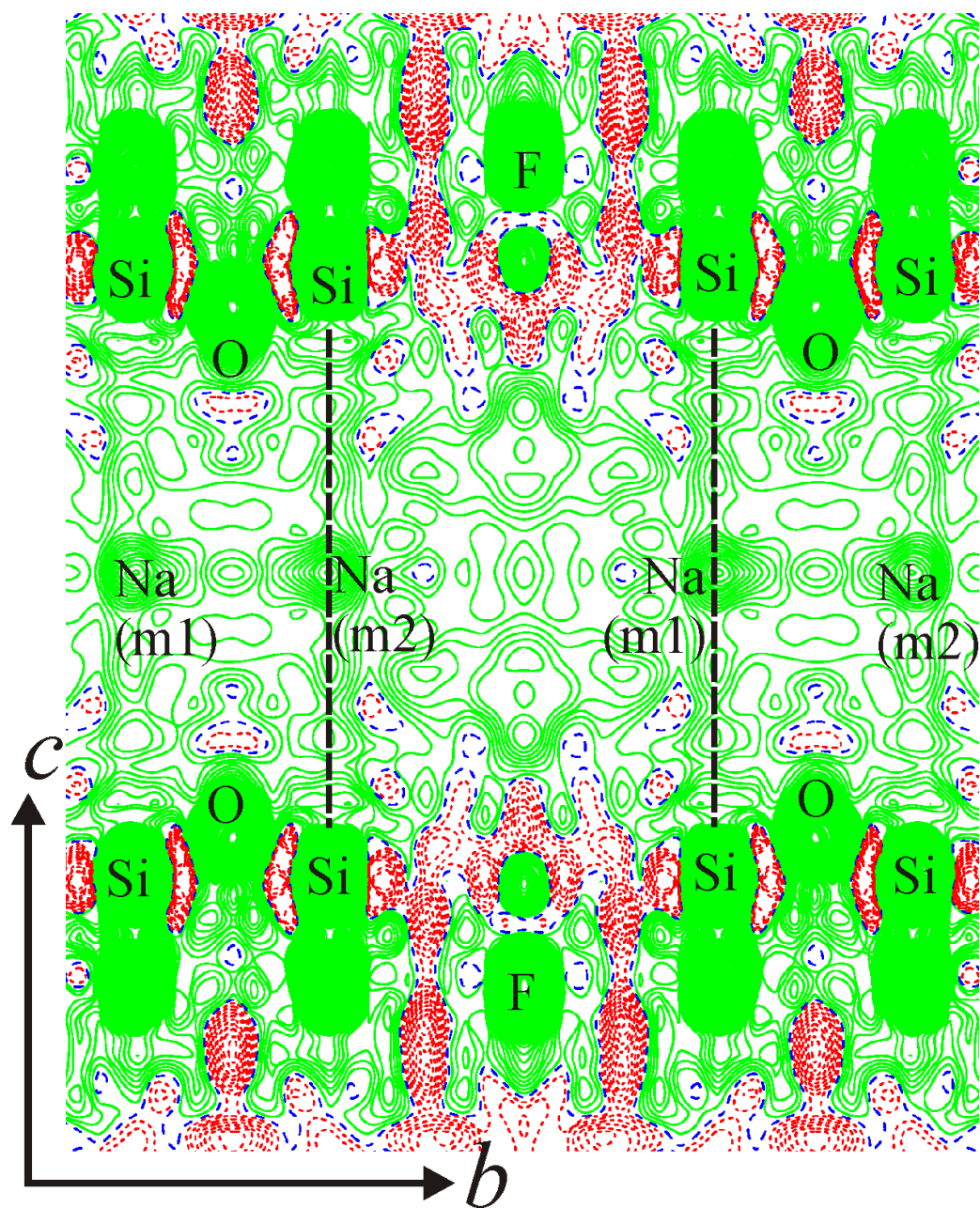


Fig. S4 Fo-map of 2WL of Na-hect projected along a. Prominent electron density peaks are labelled.

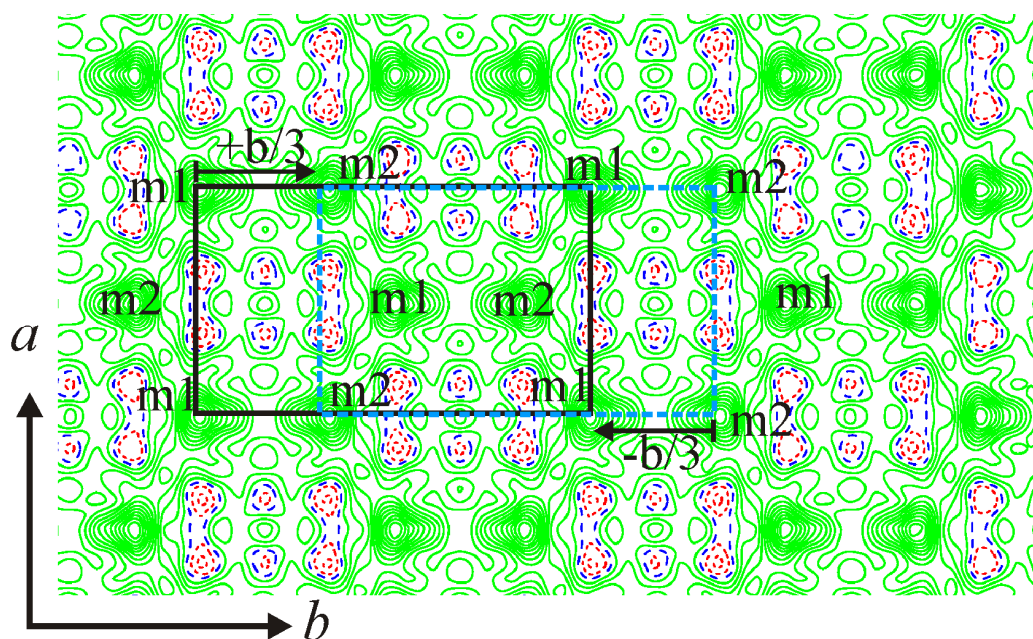


Fig. S5 Fo-map of the *ab*-plane at $z = 7.5 \text{ \AA}$ of 2WL of Na-hect. Note the equal electron density at *m1* and *m2* sites.

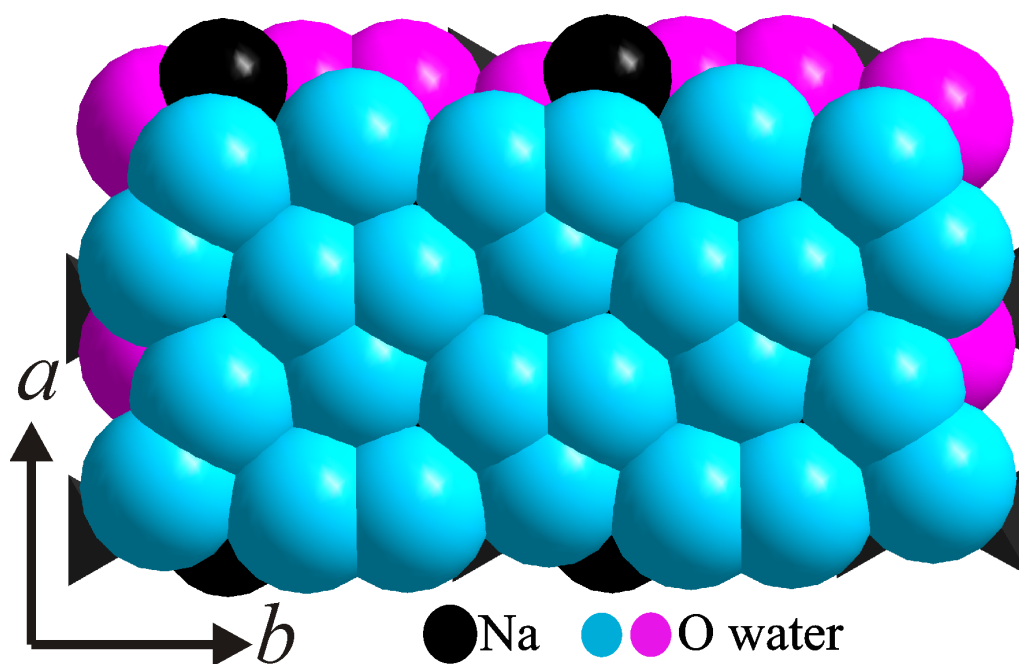


Fig. S6 CPK representation of the interlayer space underlining the densely packed arrangement of interlayer water.