

ESIPT based dual fluorescent sensor and concentration dependent reconfigurable Boolean operators

Vijay Luxami^{*a} and Subodh Kumar^b

School of Chemistry and Biochemistry, Thapar University, Patiala

Email: vj_luxami@yahoo.co.in

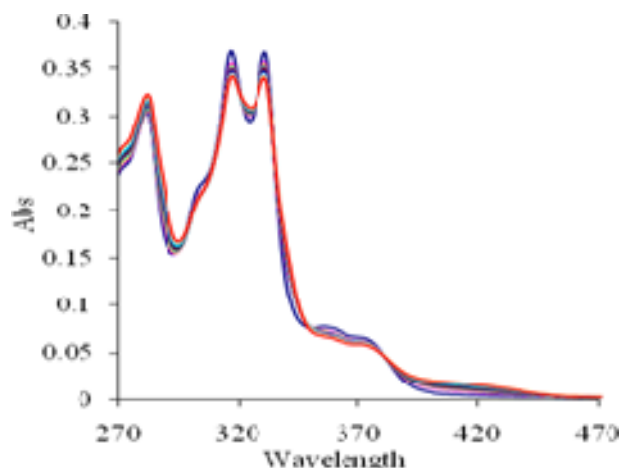


Figure 1: The effect of incremental addition of Cu^{2+} ions on the absorption spectra **1** ($10 \mu\text{M}$) at $\text{pH } 7.0 \pm 0.1$ (10 mM HEPES in $\text{CH}_3\text{CN}:\text{H}_2\text{O}$ 4:1, v:v).

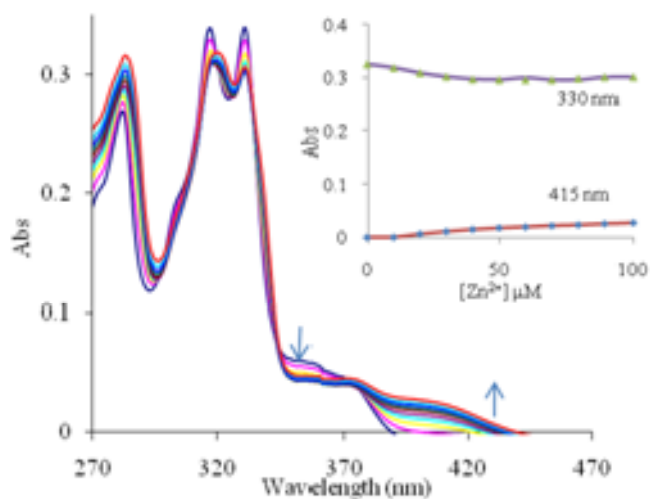


Figure 2: The effect of incremental addition of Zn^{2+} ions on the absorption spectrum of **1** ($10 \mu\text{M}$) at $\text{pH } 7.0 \pm 0.1$ (10 mM HEPES in $\text{CH}_3\text{CN}:\text{H}_2\text{O}$ 4:1, v:v). Inset shows spectral fitting of the absorbance data at 320 nm and 420 nm for chemosensor **1** on addition of different concentrations of Zn^{2+} ions (points are experimental values, line shows the curve fitting).

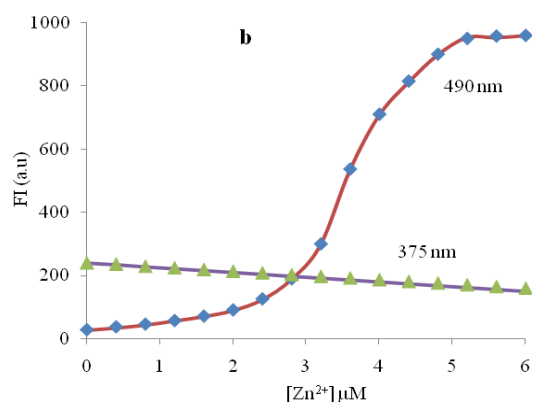


Figure 3 Spectral fitting of the fluorescence data at 375 nm and 490 nm for prober **1** on addition of different concentrations of Zn²⁺ ions (points are experimental values, line shows the curve fitting)