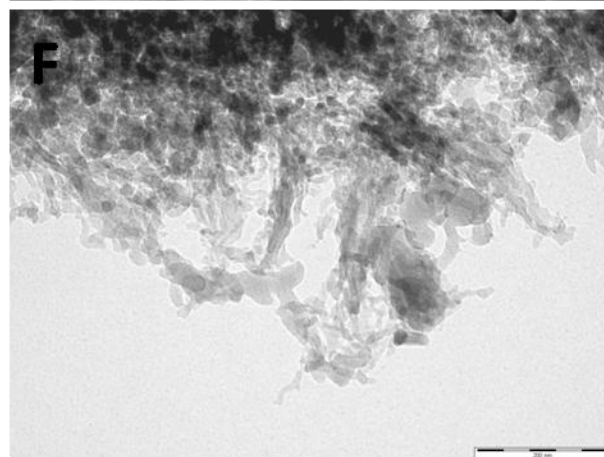
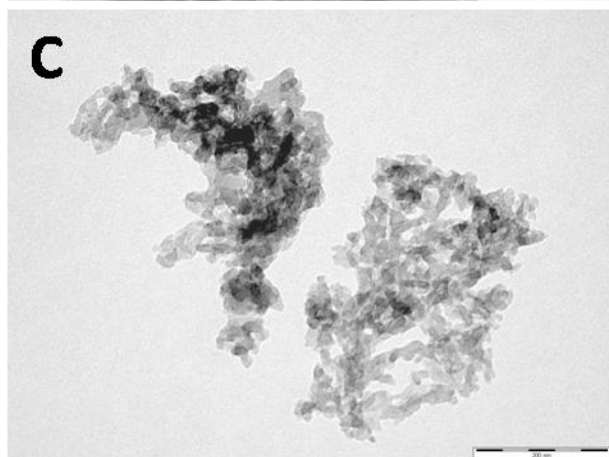
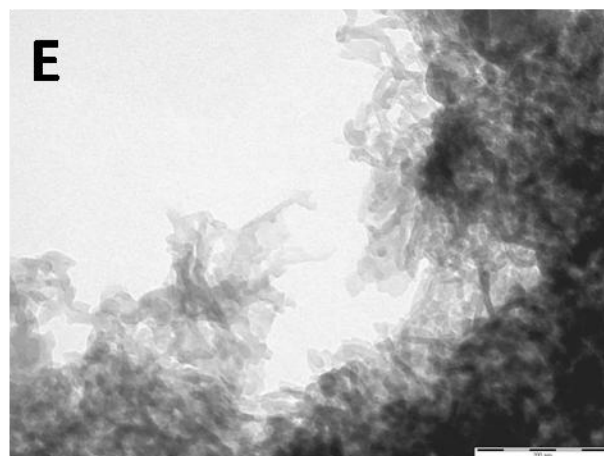
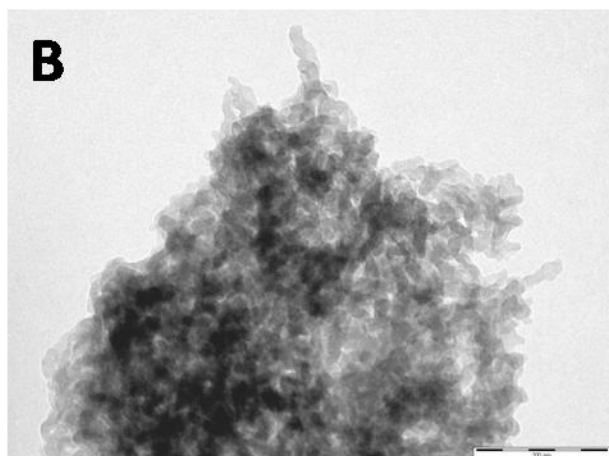
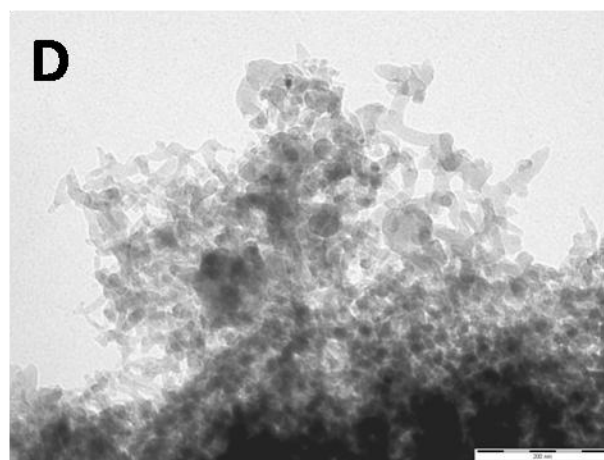
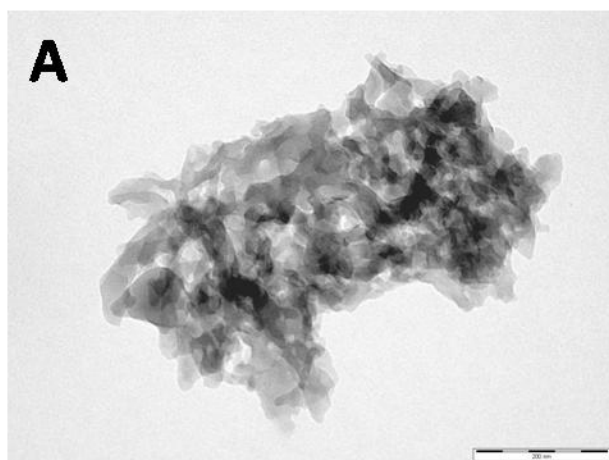
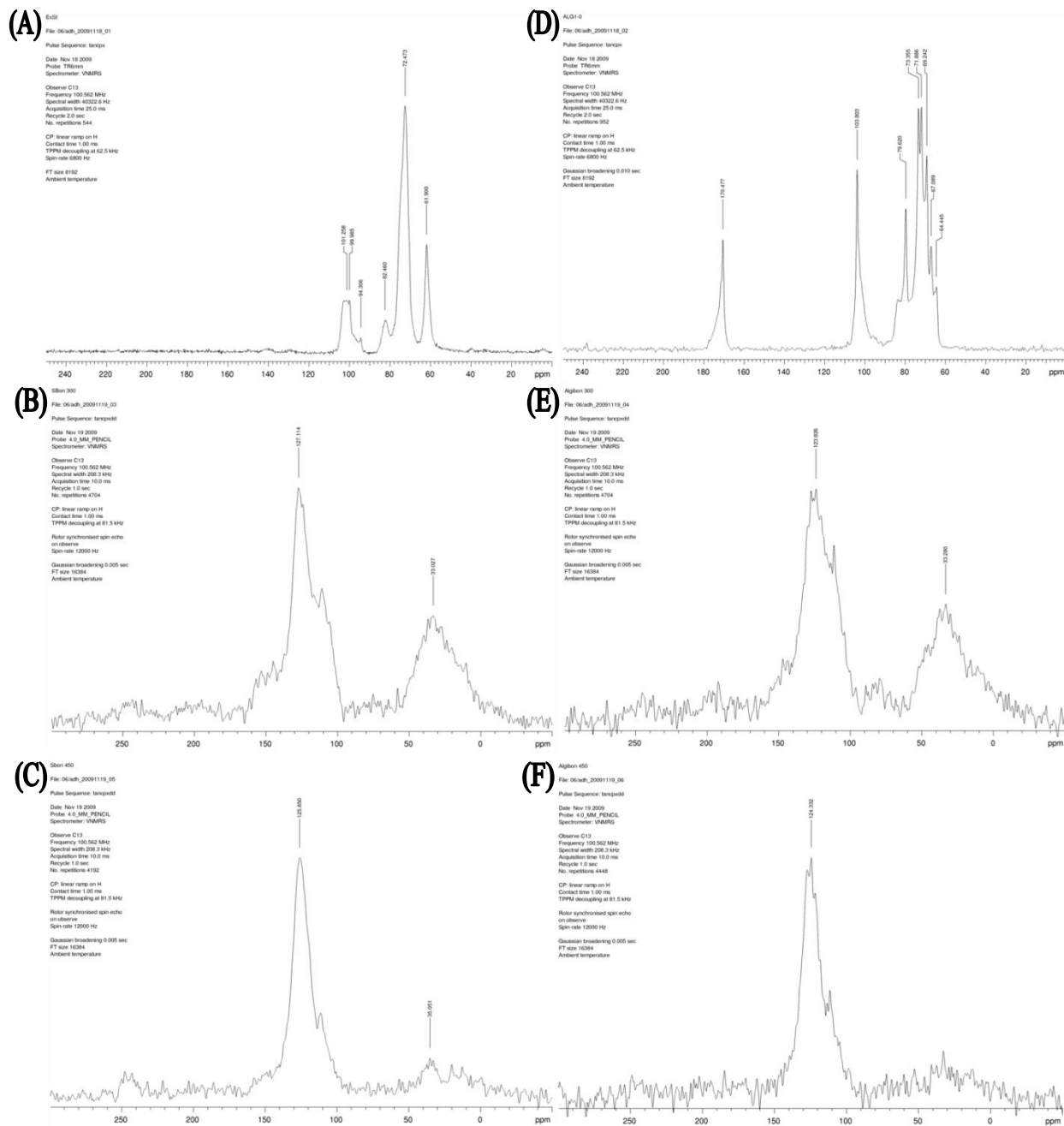


Supplementary Material

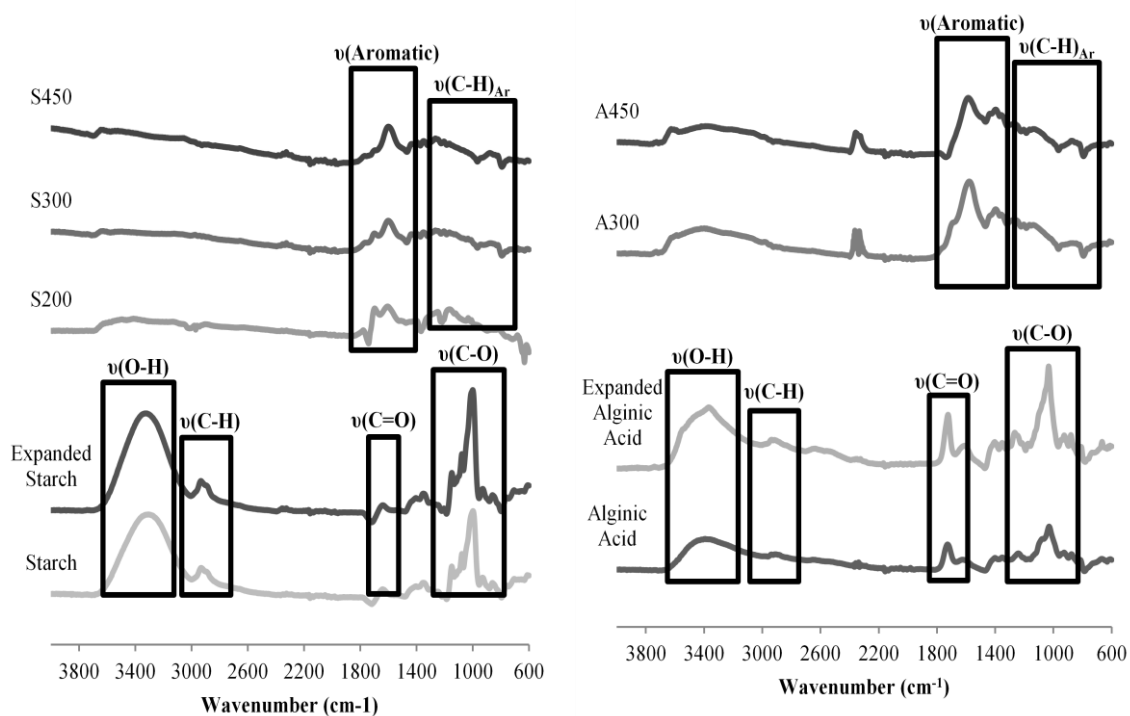
SF. 1 TEM images of A) S300, B) S450, C) S800, D) A300, E) A450 and F) A800



SF. 2 ¹³C-MAS NMR of (A) expanded starch, (B) S300, (C) S450, (D) expanded alginate acid, (E) A300 and (F) A450

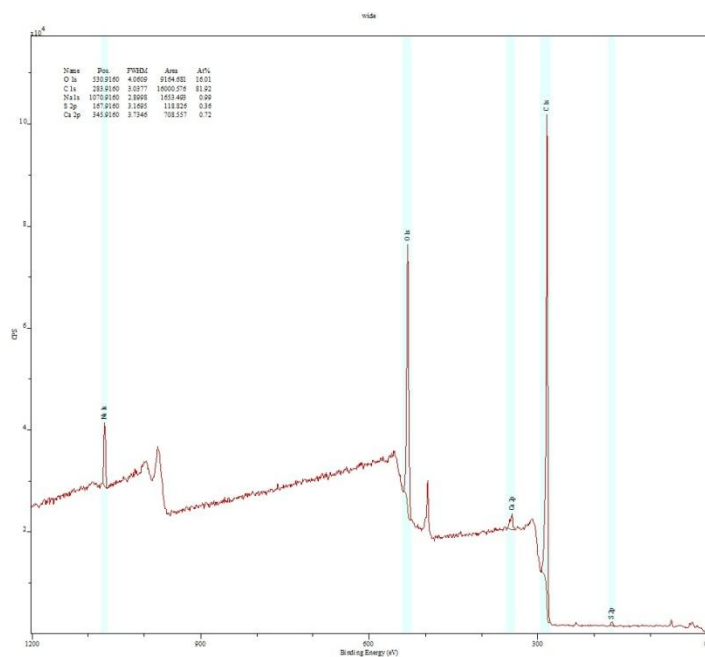


SF. 3 FT-IR spectra of (A) starch Starbons® (B) alginic acid Starbons® at increasing preparation temperatures.

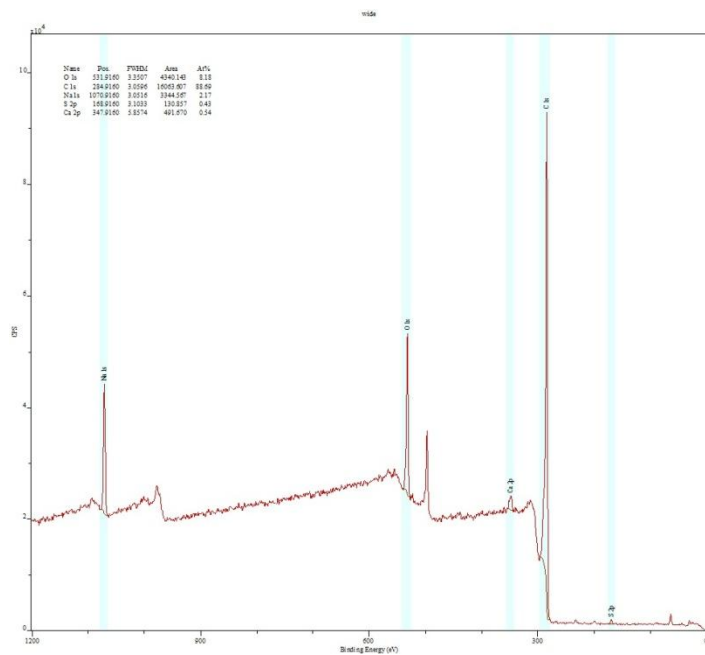


SF. 4 XPS survey scans (A) A300, (B) A800, (C) S300, and (D) S800

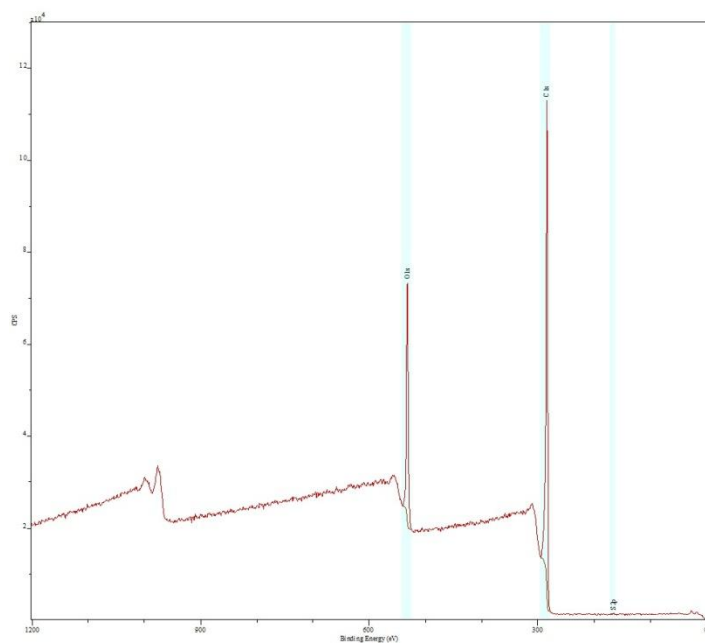
(A)



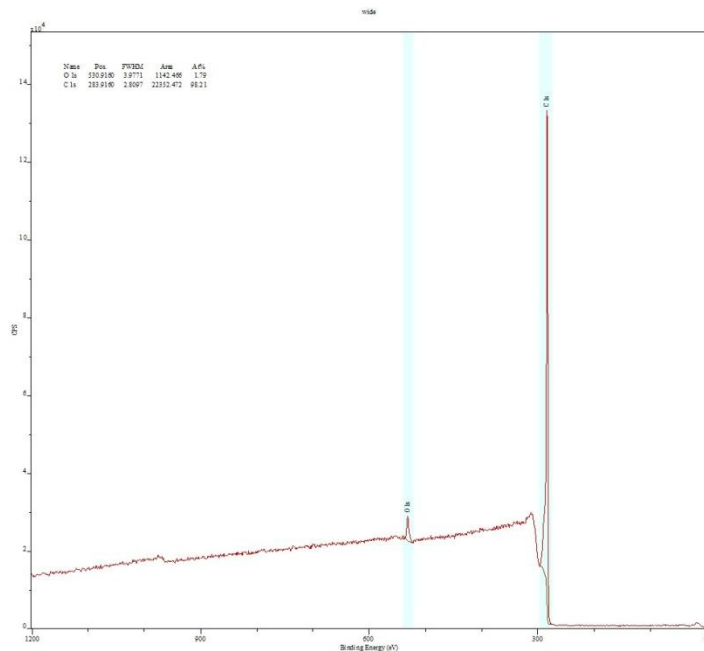
(B)



(C)



(D)



ST 1: CHN analysis of adsorbent materials

	%C	%H	%N	%Rest
S300	73.00	3.72	0.17	
S800	87.97	0.87	0.20	10.96
A300	60.06	2.76	0.28	36.90
A800	76.94	0.72	0.34	22.00

SF 5. Adsorption of acid blue 92 on various adsorbents versus contact time

