

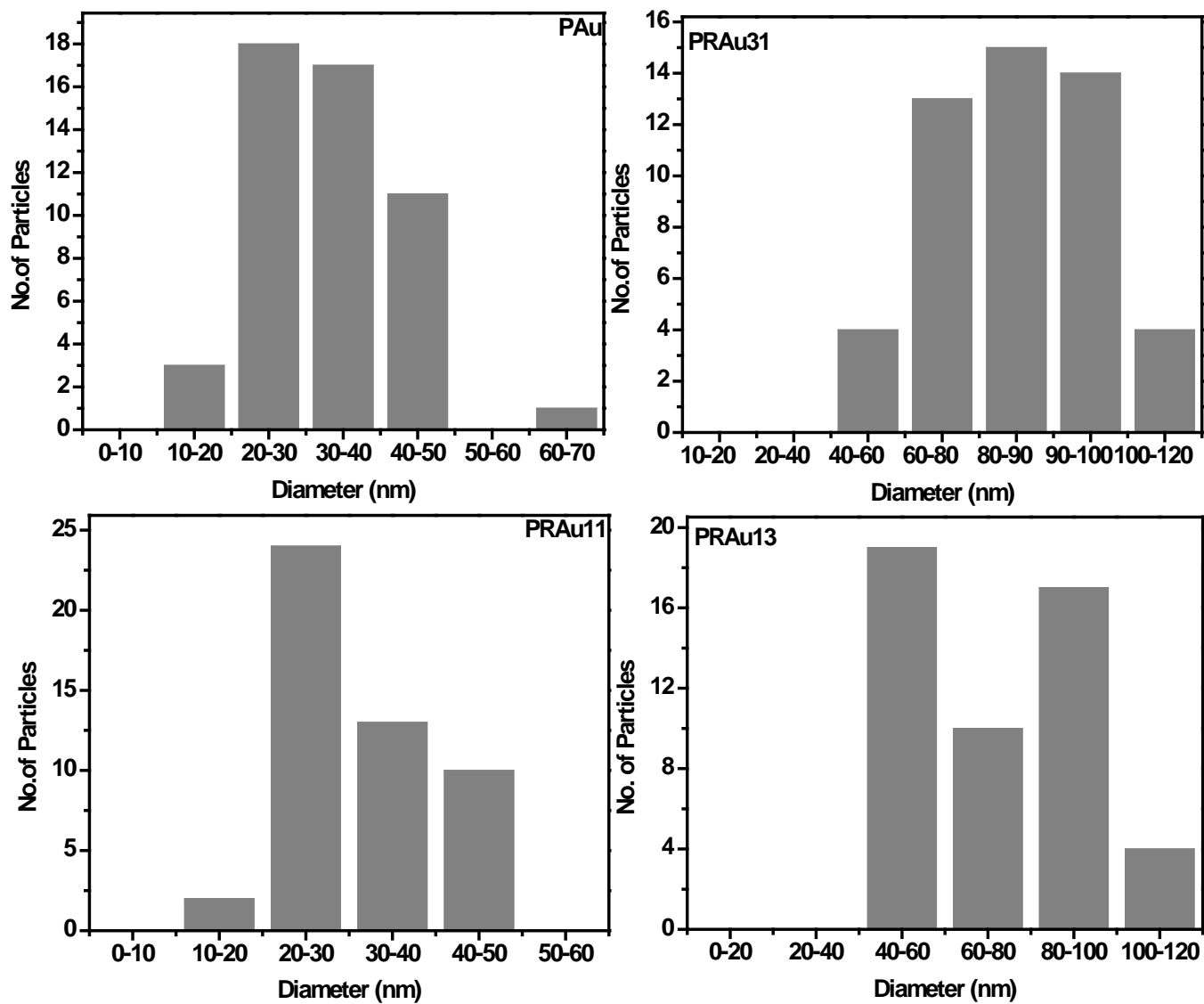
Supplementary Materials of the Manuscript

Polythiophene-g-poly(dimethylaminoethyl methacrylate) Stabilized Au Nanoparticles and its morphology tuning by RNA with variation of electronic Properties

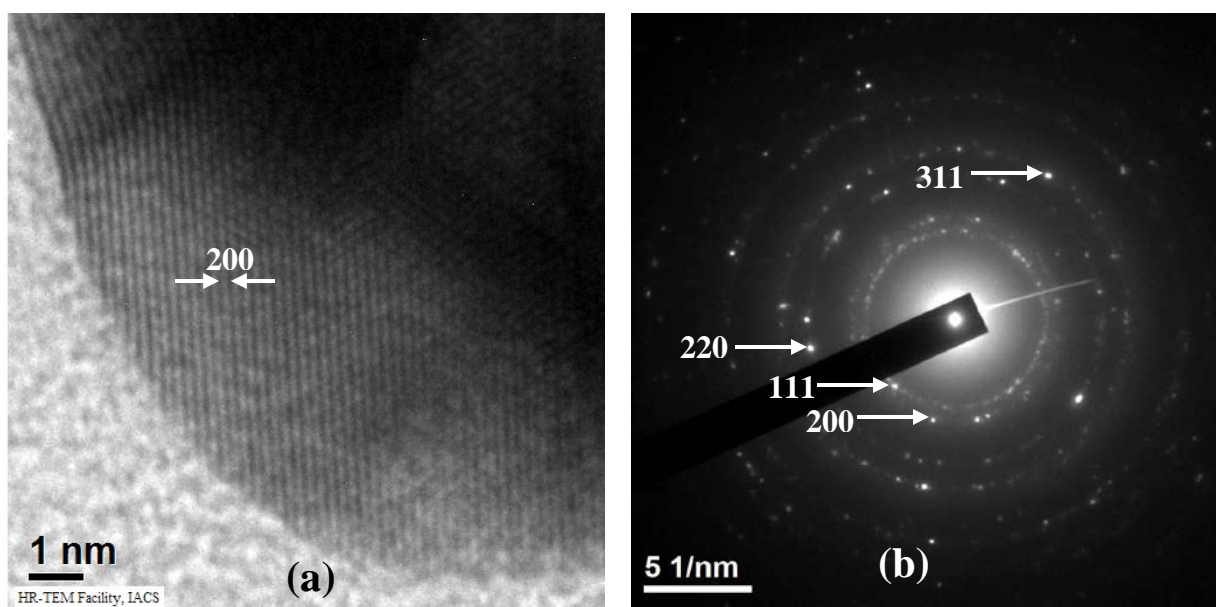
Parimal Routh, Sandip Das and Arun K. Nandi*

Polymer Science Unit, Indian Association for the Cultivation of Science, Jadavpur,
Kolkata 700 032, India

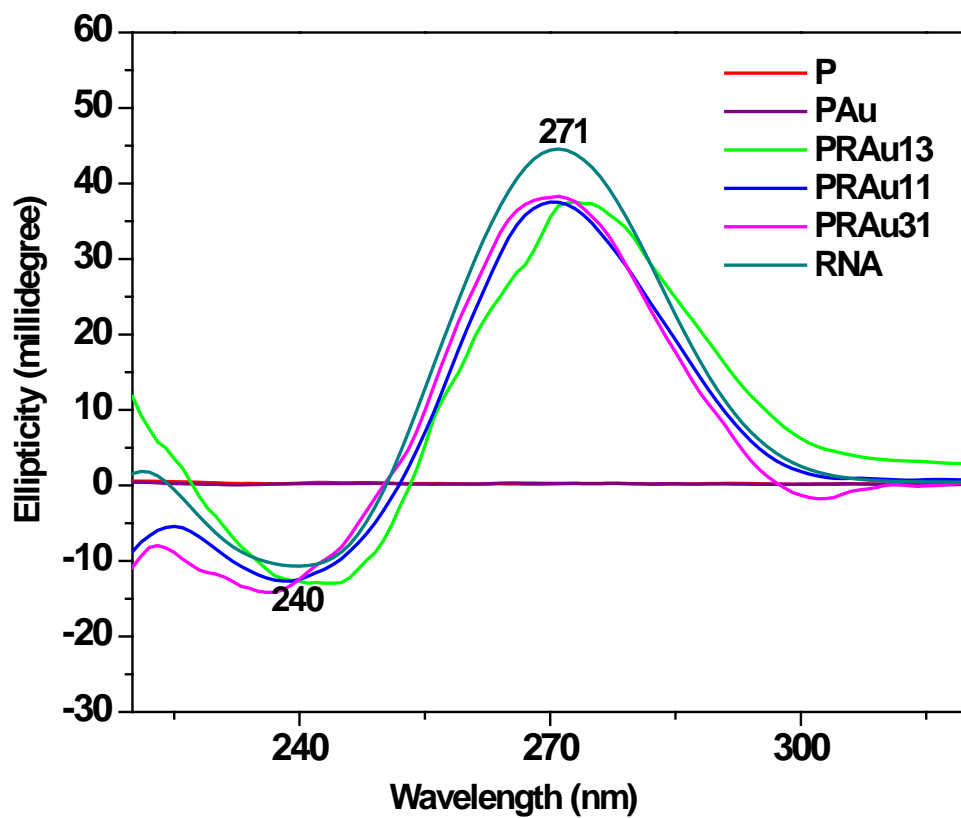
* For correspondence: psuakn@iacs.res.in



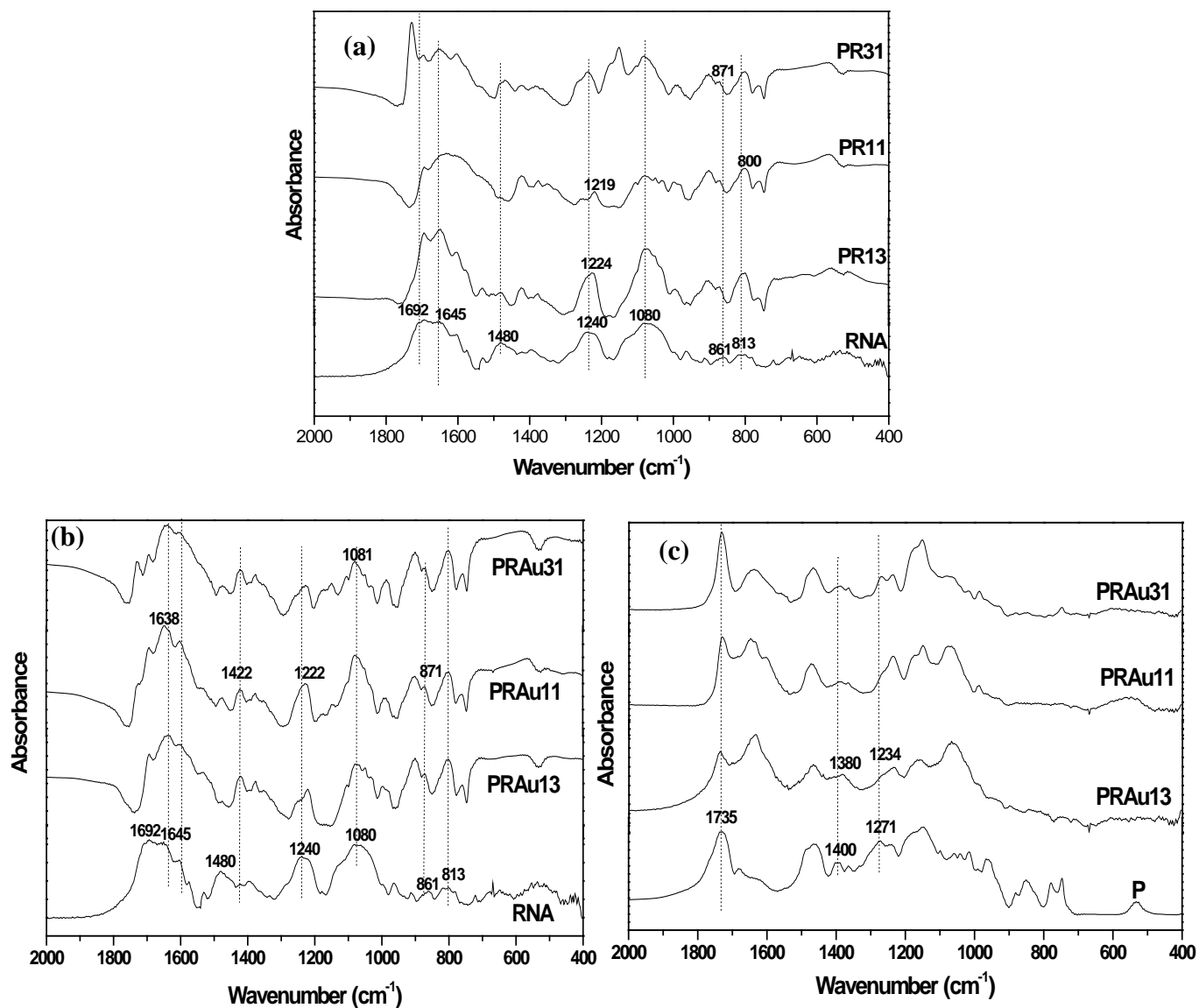
SI.Fig. -1: Particle size distribution of P Au, PRAu11, PRAu13, PRAu31



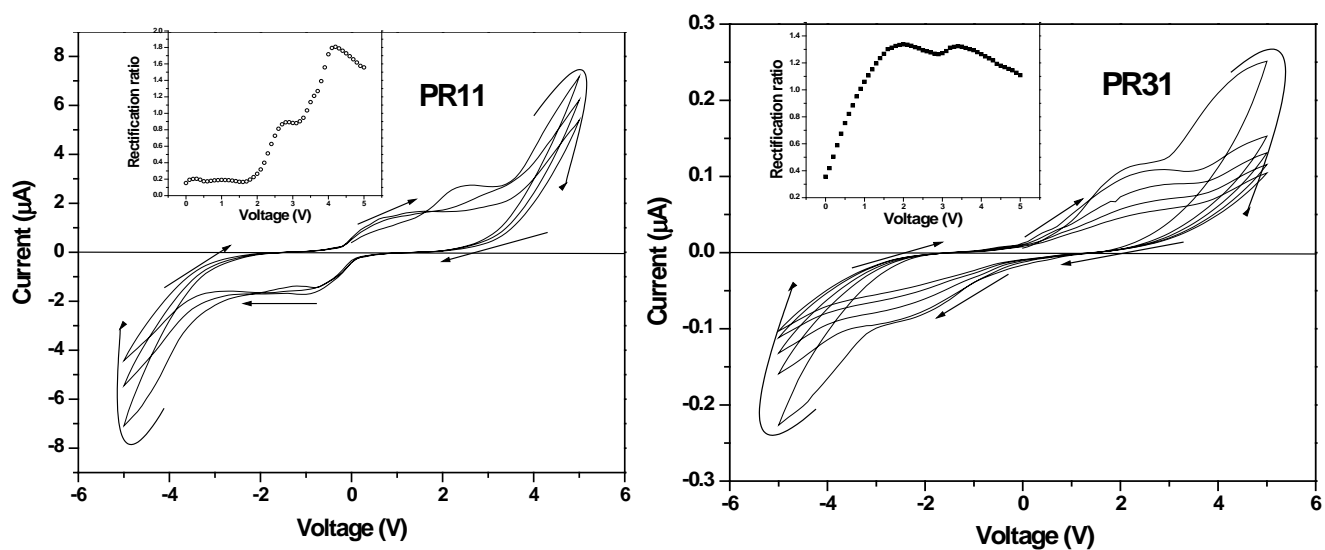
SI.Fig. -2 (a) Electron diffraction pattern and (b) HRTEM image of PRAu13 system to conform the presence of Au NPs on the PR hybrid.



SI.Fig. -3 Normalized CD spectra of RNA, P, PAu and nanobiocomposite (PRAu13, PRAu11 and PRAu31) with respect to RNA concentration at 30 °C



SI.Fig. -4 FT-IR spectra of (a) pure RNA and P subtracted PR hybrid, (b) pure RNA and P subtracted PRAu, (c) pure P and RNA subtracted PRAu nanobiocomposite



SI.Fig. - 5 Current-Voltage (I-V) characteristic curves of PR11 and PR31 hybrids. (inset: plot for rectification ratio vs voltage (V) of the respective hybrids)