

Electronic Supplementary Information (ESI)

Control of spin-spin exchange interactions in polynitroxides through inclusion within γ -cyclodextrin

Mintu Porel,^a M. Francesca Ottaviani,^{b*} Steffen Jockusch,^c Nicholas J. Turro^{c*} and V. Ramamurthy^{a*}

^aDepartment of Chemistry, University of Miami, Coral Gables, Florida 33124, United States

^bDepartment of Earth, Life and Environmental Sciences (DiSTeVA), University of Urbino, 61029 Urbino, Italy

^cDepartment of Chemistry, Columbia University, New York, New York 10027, United States

Contents

| | Content | Page # |
|---------|---|--------|
| Fig. S1 | EPR titration spectra of T2 with γ -CD | S2 |
| Fig. S2 | EPR titration spectra of T3 with γ -CD | S2 |
| Fig. S3 | EPR spectra of T3 in solution at different temperatures | S3 |
| Fig. S4 | Arrhenius plot for T2 in γ -CD | S3 |
| Fig. S5 | Arrhenius plot for T3 in solution and γ -CD | S4 |

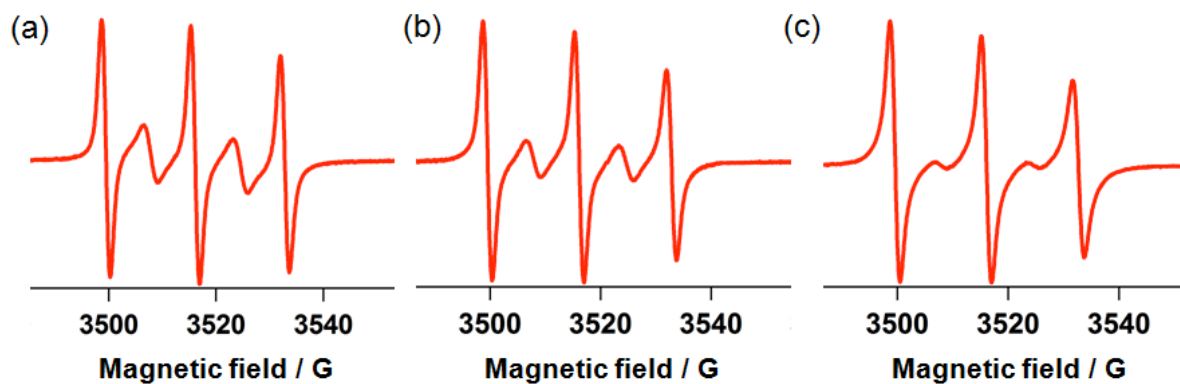


Fig. S1 EPR titration spectra of T2 with γ -CD; (a) $[T2]/[\gamma\text{-CD}] = 1:0$, (b) $[T2]/[\gamma\text{-CD}] = 1:4$ and $[T2]/[\gamma\text{-CD}] = 1:20$; $[T2] = 0.1 \text{ mM}$ at 295 K.

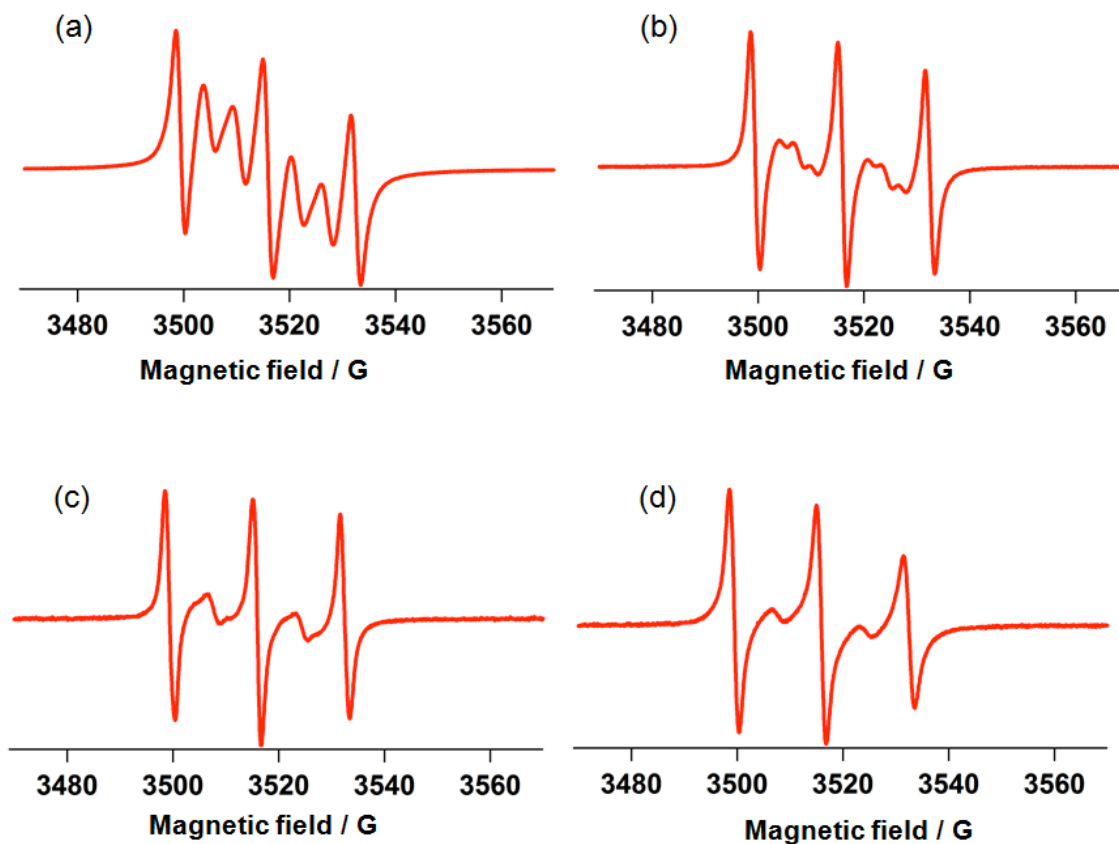


Fig. S2 EPR titration spectra of T3 with γ -CD; (a) $[T3]/[\gamma\text{-CD}] = 1:0$, (b) $[T3]/[\gamma\text{-CD}] = 1:2$, (c) $[T3]/[\gamma\text{-CD}] = 1:4$ and (d) $[T3]/[\gamma\text{-CD}] = 1:10$; $[T3] = 0.1 \text{ mM}$ at 295 K.

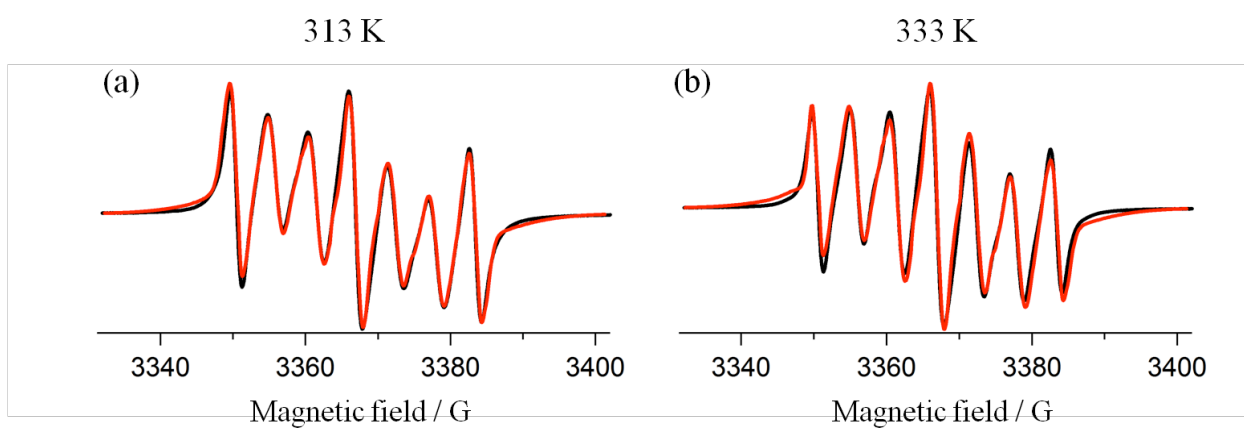


Fig. S3 EPR spectra of T3 in 1:1 MeOH/water at different temperatures.

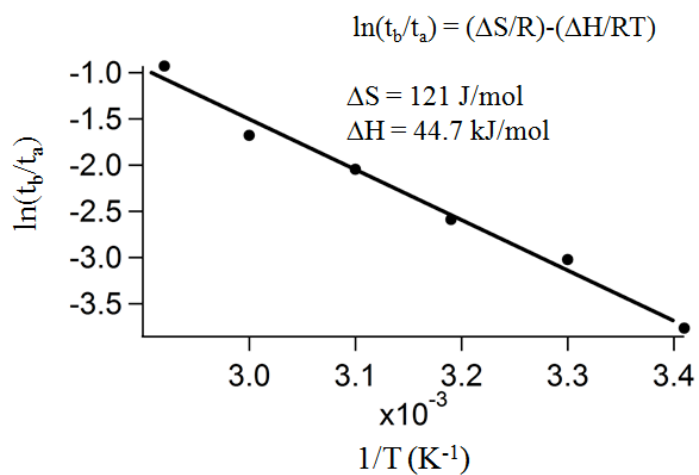


Fig. S4 Arrhenius plot for T2 in presence of 20 equivalent of γ -CD. ($t_b = t_{\text{close}}$; $t_a = t_{\text{far}}$)

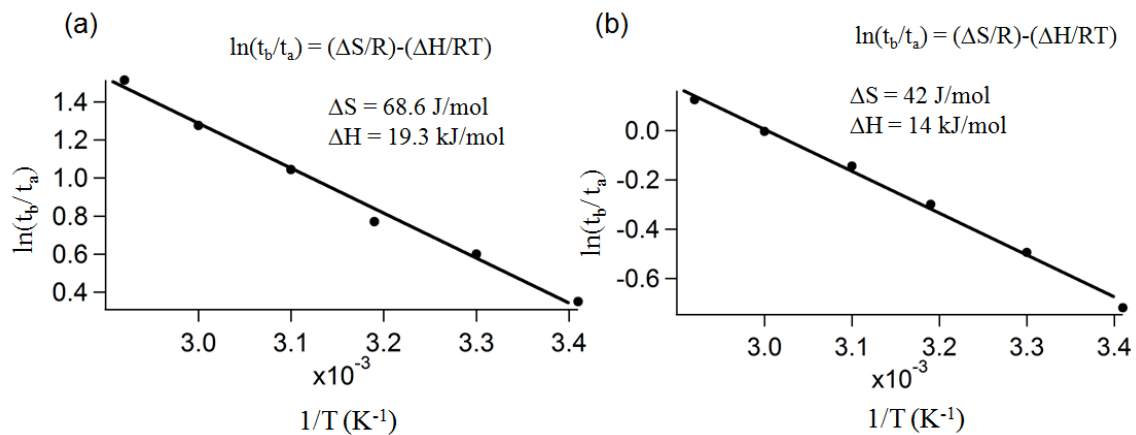


Fig. S5 Arrhenius plot for T3 in (a) 1:1 MeOH/water and (b) in presence of 20 equivalent γ -CD. ($t_b = t_{\text{close}}$; $t_a = t_{\text{far}}$)