

Supporting Information for “Cathodic deposition of interlaced nanosheet-like cobalt sulfide films for high-performance supercapacitors”

Jeng-Yu Lin* and Shu-Wei Chou

Mr. S. W. Chou and Dr. J. Y. Lin

Dept. of Chemical Engineering, Tatung University, No. 40, Sec. 3, Chungshan North Rd., Taipei
City 104, Taiwan

Fax: +886-225861939

E-mail: jylin@ttu.edu.tw

[*] Corresponding author

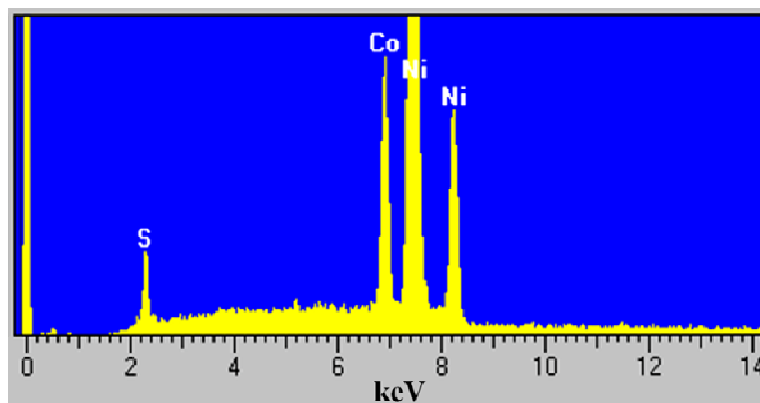


Figure S1 X-ray energy dispersive spectroscopy of the thin film deposited on Ni foam.

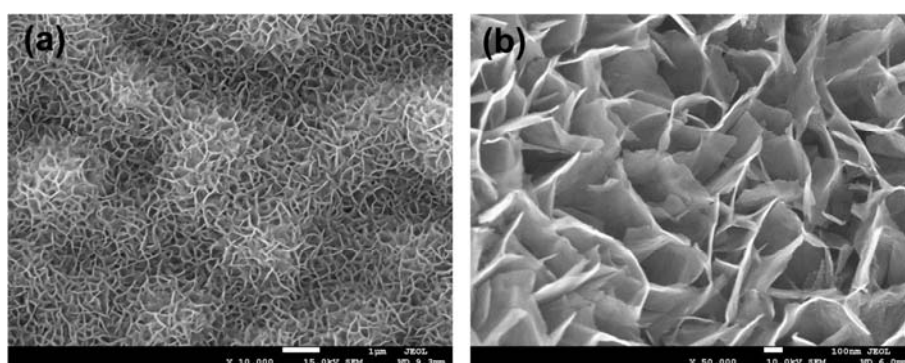


Figure S2 FESEM images of the interlaced nanosheet-like CoS electrode after 1000 consecutive charge-discharge cycles at 8 A g^{-1} . (a) 10000 X and (b) 50000 X.