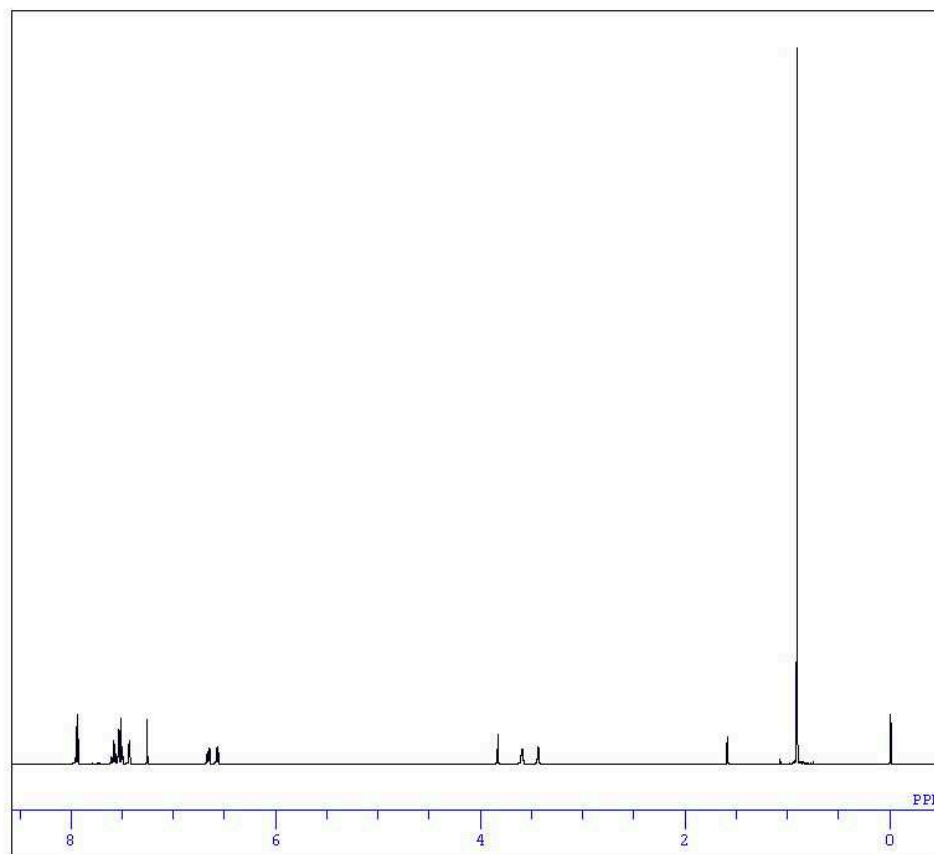
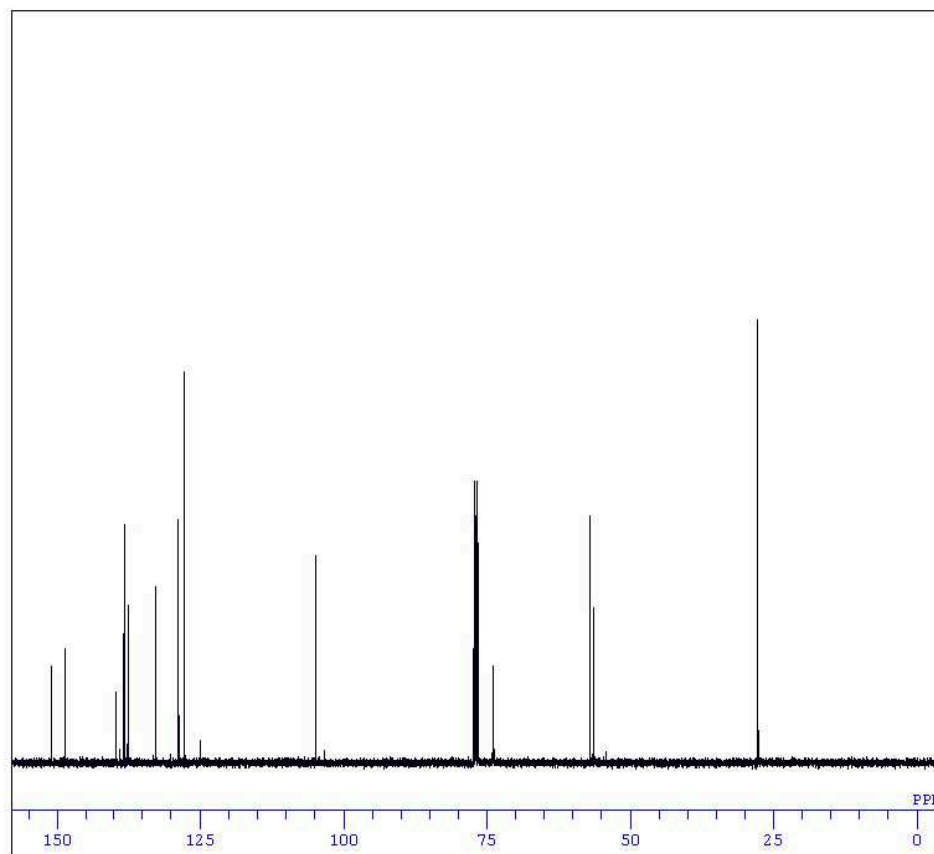


NMR DATA



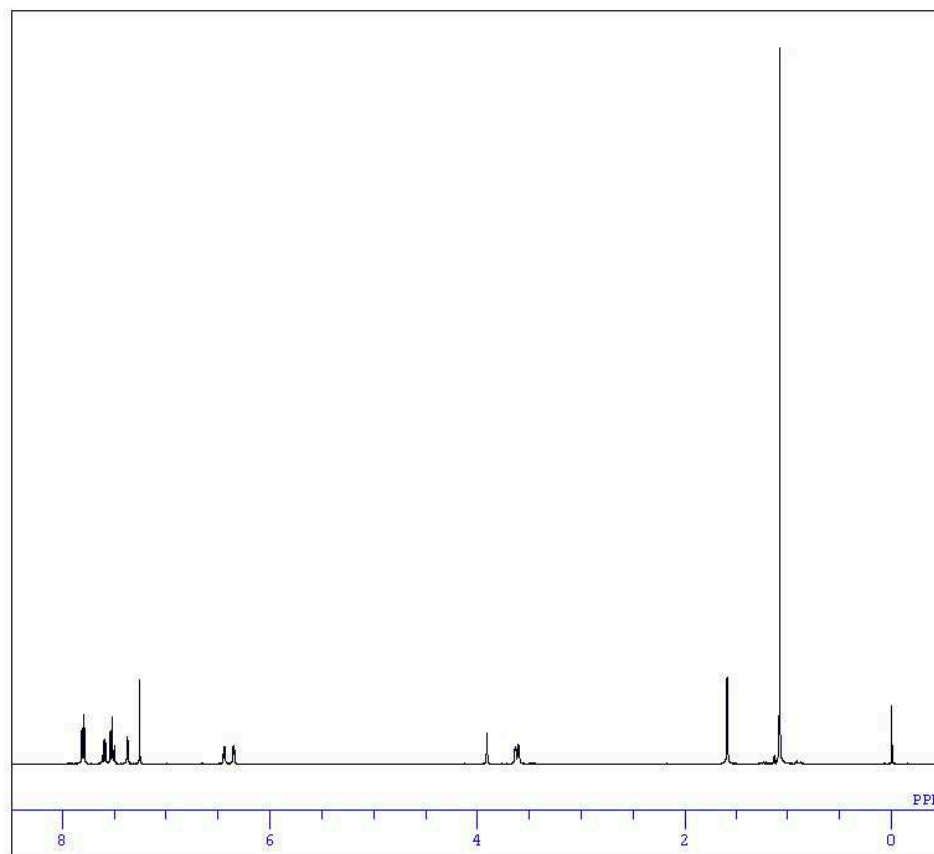
DFILE E:\mr'effl[f^],PH-NMR\s125-co.  
COMNT  
DATIM Mon Jul 09 08:17:46 2012  
OBNUC 1H  
EXMOD NON  
OBFRQ 399.65 MHz  
OBSET 124.00 KHz  
OBFIN 10500.0 Hz  
POINT 32768  
FREQU 7993.6 Hz  
SCANS 16  
ACQTM 4.099 sec  
PD 2.901 sec  
PW1 5.5 us  
IRNUC 1H  
CTEMP 23.6 c  
SLVNT CDCL3  
EXREF 0.00 ppm  
BF 2.40 Hz  
RGAIN 15

syn-7



DFILE E:\MR'effl[f^\13C-NMR\syn t-B  
COMNT  
DATIM Thu Aug 23 14:02:24 2012  
OBNUC 13C  
EXMOD BCM  
OBFRQ 100.40 MHz  
OBSET 125.00 KHz  
OBFIN 10500.0 Hz  
POINT 32768  
FREQU 27173.9 Hz  
SCANS 1666  
ACQTM 1.206 sec  
PD 1.794 sec  
PW1 5.6 us  
IRNUC 1H  
CTEMP -204.8 c  
SLVNT CDCL3  
EXREF 77.00 ppm  
BF 2.40 Hz  
RGAIN 26

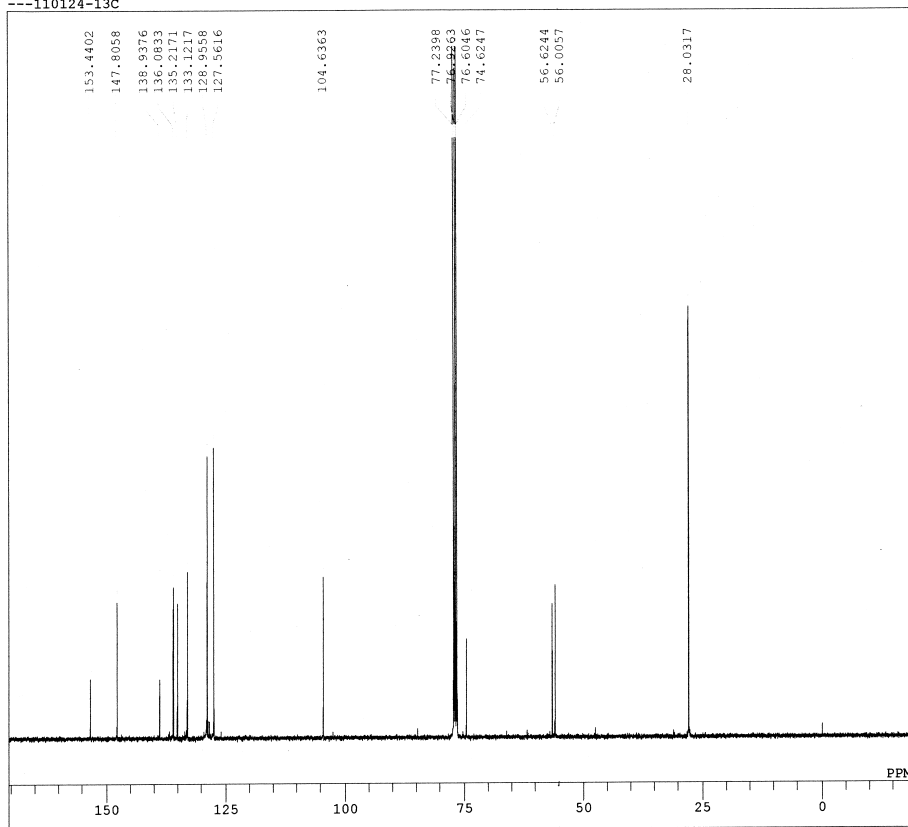
*syn-7*



DFILE E:\'a'effl[f^]y0078saikessyo ( :  
COMNT  
DATIM Mon Jun 04 11:24:34 2012  
OBNUC 1H  
EXMOD NON  
OBFRQ 399.65 MHz  
OBSET 124.00 KHz  
OBFIN 10500.0 Hz  
POINT 32768  
FREQU 7993.6 Hz  
SCANS 8  
ACQTM 4.099 sec  
PD 2.901 sec  
PW1 5.5 us  
IRNUC 1H  
CTEMP 22.2 c  
SLVNT CDCL3  
EXREF 0.00 ppm  
BF 2.40 Hz  
RGAIN 18

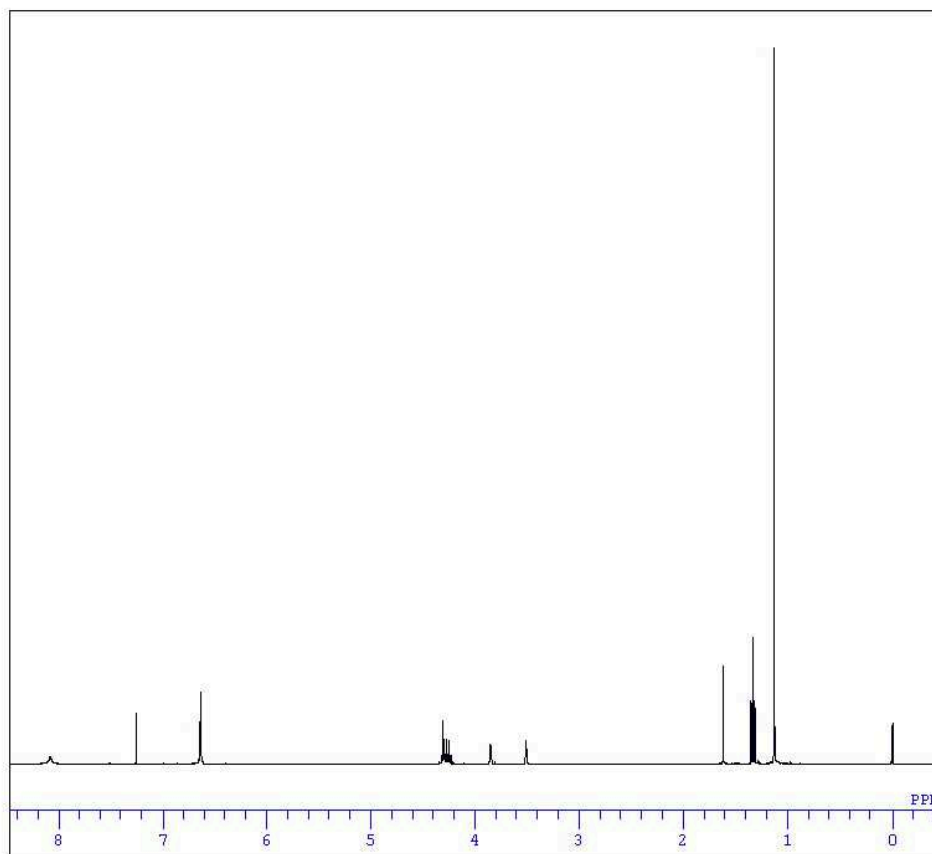
*anti-7*

F:\NMR\---110124-13C.als  
---110124-13C



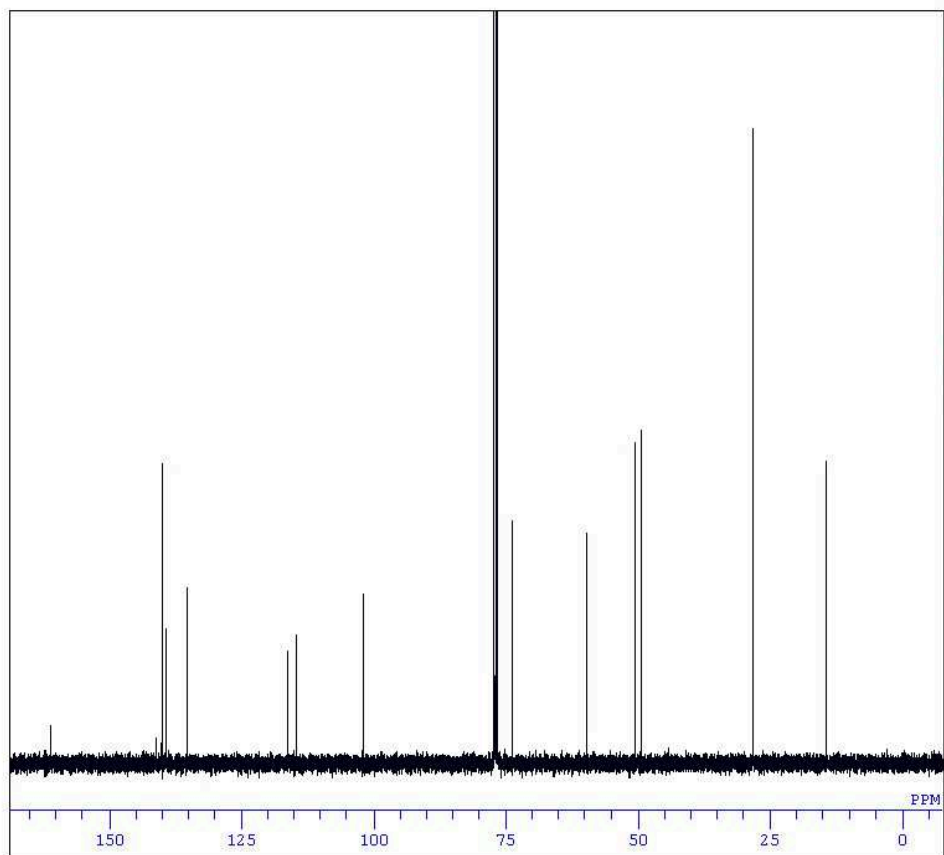
DFILE F:\NMR\---110124-13C.als  
COMNT ---110124-13C  
DATIM Tue Jan 25 06:12:59 2011  
OBNUC 13C  
EXMOD BCM  
OBFRQ 100.40 MHz  
OBSET 125.00 KHz  
OBFIN 10500.0 Hz  
POINT 32768  
FREQU 27173.9 Hz  
SCANS 10000  
ACQTM 1.206 sec  
PD 1.794 sec  
PW1 5.6 us  
IRNUC 1H  
CTEMP 20.7 c  
SLVNT CDCL3  
EXREF 0.00 ppm  
BF 0.90 Hz  
RGAIN 24

*anti-7*

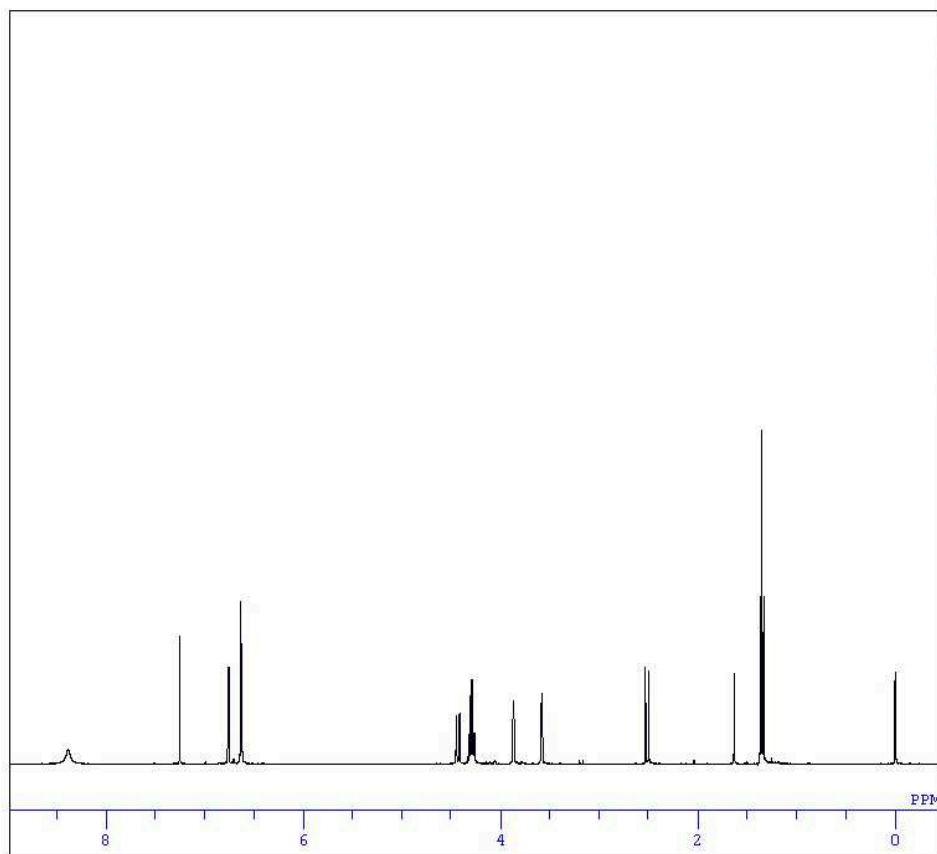


DFILE E:\'a'effl[f^\[221]t-BuOpyrro.  
COMNT  
DATIM Wed Jul 18 16:35:54 2012  
OBNUC 1H  
EXMOD NON  
OBFRQ 399.65 MHz  
OBSET 124.00 KHz  
OBFIN 10500.0 Hz  
POINT 32768  
FREQU 7993.6 Hz  
SCANS 32  
ACQTM 4.099 sec  
PD 2.901 sec  
PW1 5.5 us  
IRNUC 1H  
CTEMP 24.1 c  
SLVNT CDCL3  
EXREF 0.00 ppm  
BF 2.40 Hz  
RGAIN 17

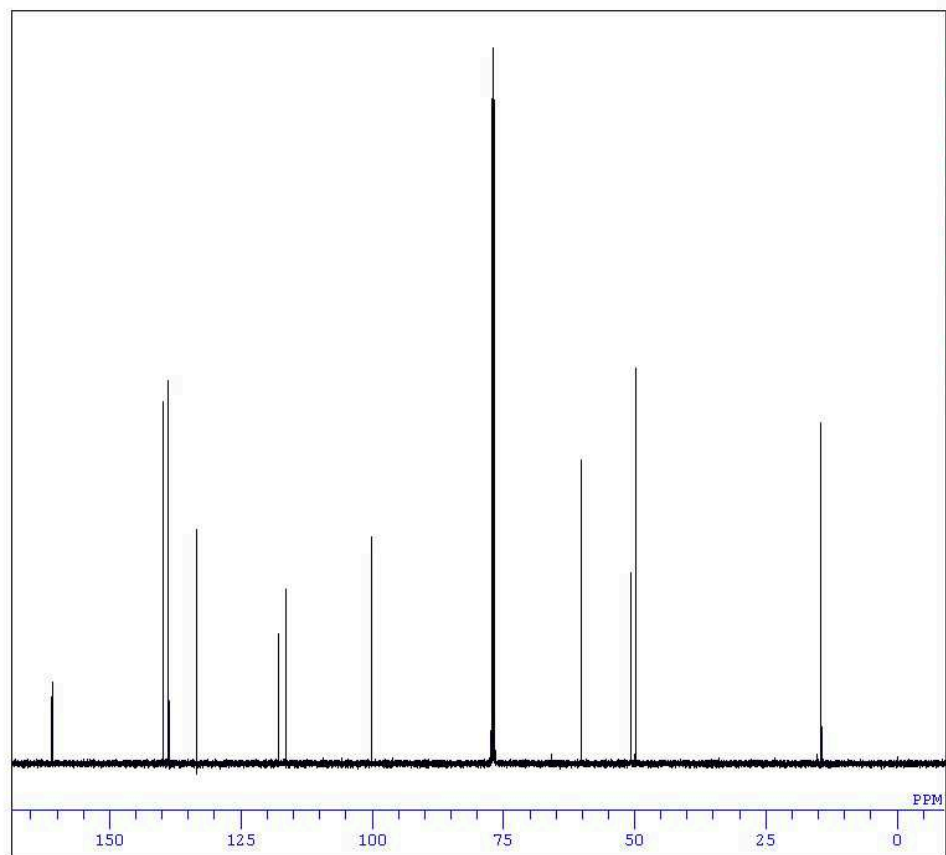
8



DFILE E:\MR'effl[f^\13C-NMR\syn t-B  
COMNT  
DATIM Tue Aug 07 06:39:22 2012  
OBNUC 13C  
EXMOD BCM  
OBFRQ 100.40 MHz  
OBSET 125.00 KHz  
OBFIN 10500.0 Hz  
POINT 32768  
FREQU 27173.9 Hz  
SCANS 10000  
ACQTM 1.206 sec  
PD 1.794 sec  
PW1 5.6 us  
IRNUC 1H  
CTEMP 25.4 c  
SLVNT CDCL3  
EXREF 77.00 ppm  
BF 2.40 Hz  
RGAIN 25

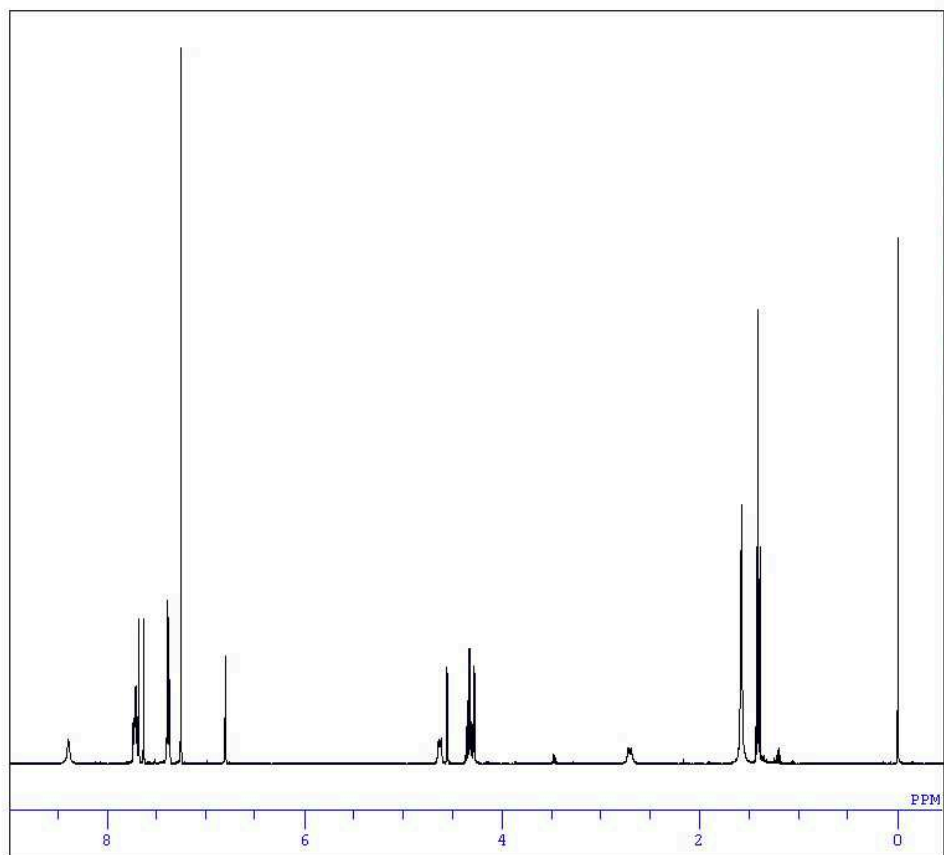


```
D:FILE E:\mr'effl[f^],PH-NMR\s030-fJ.  
COMNT  
DATIM Mon Jul 04 10:01:53 2011  
OBNUC 1H  
EXMOD NON  
OBFRQ 399.65 MHz  
OBSET 124.00 KHz  
OBFIN 10500.0 Hz  
POINT 32768  
FREQU 7993.6 Hz  
SCANS 8  
ACQTM 4.099 sec  
PD 2.901 sec  
PW1 5.5 us  
IRNUC 1H  
CTEMP 25.8 c  
SLVNT CDCL3  
EXREF 0.00 ppm  
BF 2.40 Hz  
RGAIN 18
```



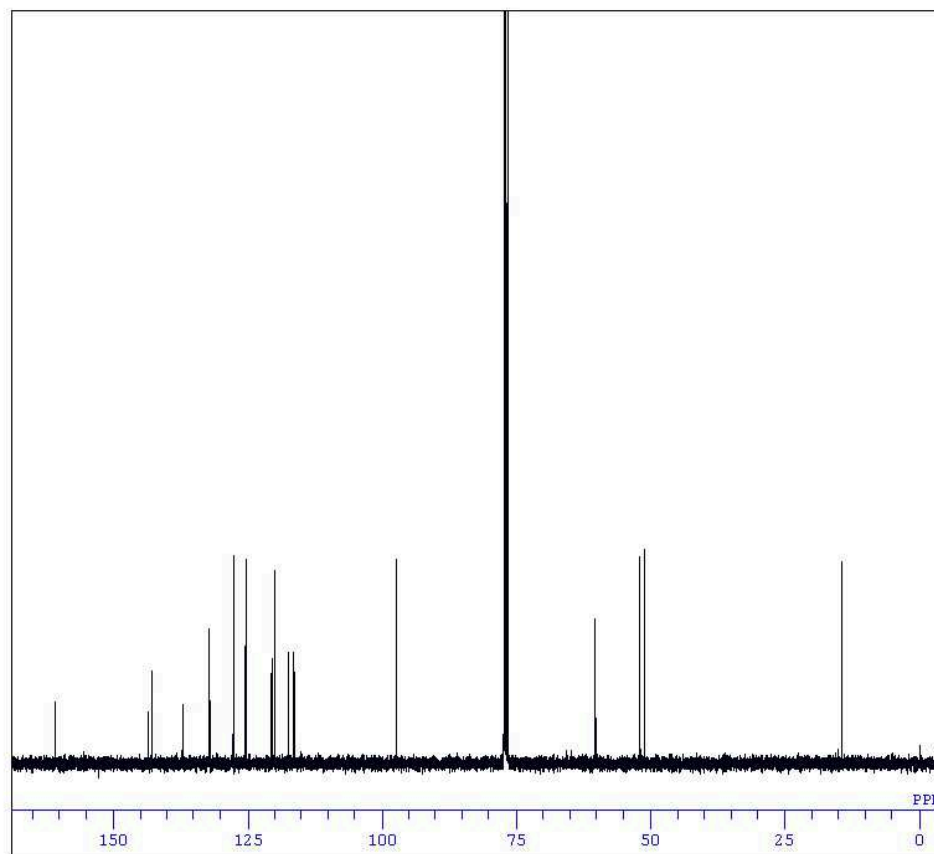
DFILE E:\MR'effl[f^\13C-NMR\syn HO[:  
COMNT  
DATIM Tue Aug 21 05:49:42 2012  
OBNUC 13C  
EXMOD BCM  
OBFRQ 100.40 MHz  
OBSET 125.00 KHz  
OBFIN 10500.0 Hz  
POINT 32768  
FREQU 27173.9 Hz  
SCANS 10000  
ACQTM 1.206 sec  
PD 1.794 sec  
PW1 5.6 us  
IRNUC 1H  
CTEMP -113.1 c  
SLVNT CDCL3  
EXREF 77.00 ppm  
BF 2.40 Hz  
RGAIN 26





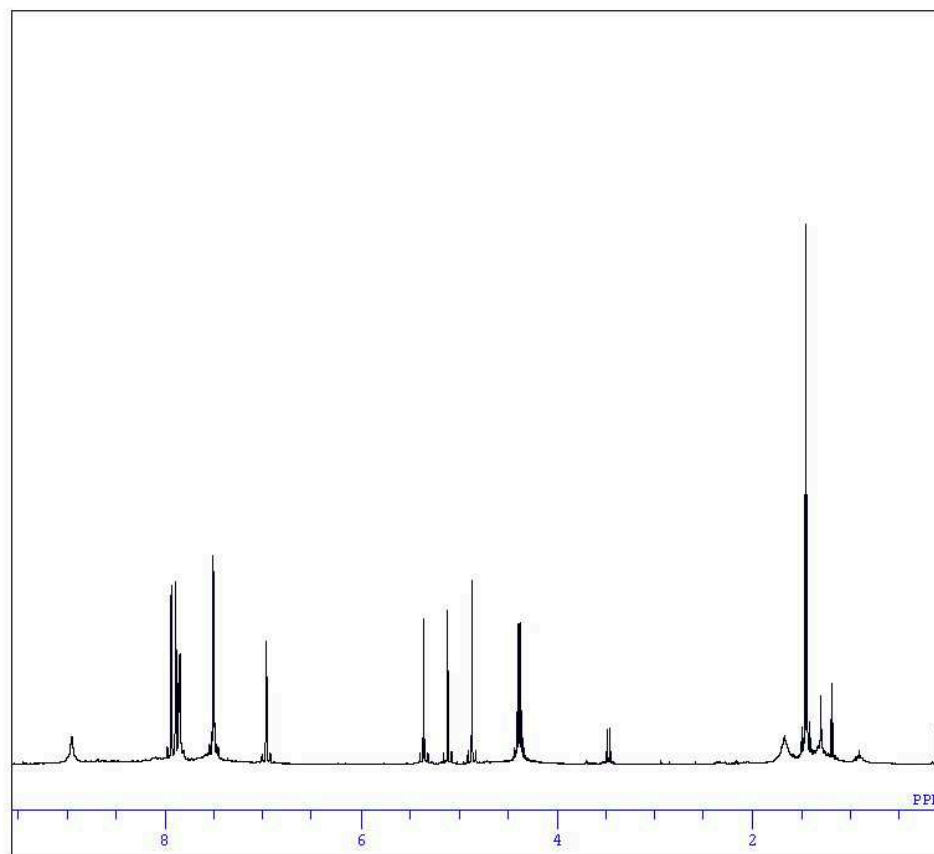
DFILE E:\MR'effl[f^\naphtho[221]OHp;  
COMNT  
DATIM Wed Jul 18 16:49:18 2012  
OBNUC 1H  
EXMOD NON  
OBFRQ 399.65 MHz  
OBSET 124.00 KHz  
OBFIN 10500.0 Hz  
POINT 32768  
FREQU 7993.6 Hz  
SCANS 32  
ACQTM 4.099 sec  
PD 2.901 sec  
PW1 5.5 us  
IRNUC 1H  
CTEMP 23.7 c  
SLVNT CDCL3  
EXREF 0.00 ppm  
BF 2.40 Hz  
RGAIN 21

10



DFILE E:\MR'effl[f^\13C-NMR\naphtho  
COMNT  
DATIM Wed Aug 22 05:23:23 2012  
OBNUC 13C  
EXMOD BCM  
OBFRQ 100.40 MHz  
OBSET 125.00 KHz  
OBFIN 10500.0 Hz  
POINT 32768  
FREQU 27173.9 Hz  
SCANS 10000  
ACQTM 1.206 sec  
PD 1.794 sec  
PW1 5.6 us  
IRNUC 1H  
CTEMP 4.7 c  
SLVNT CDCL3  
EXREF 77.00 ppm  
BF 2.40 Hz  
RGAIN 26

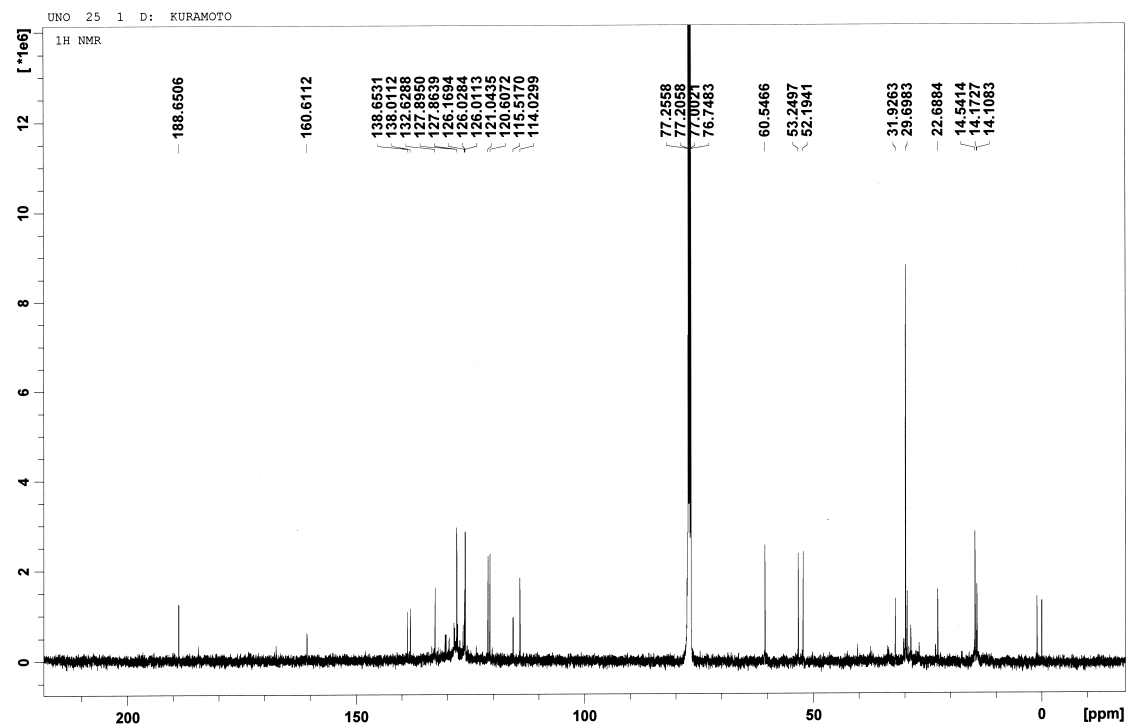
10

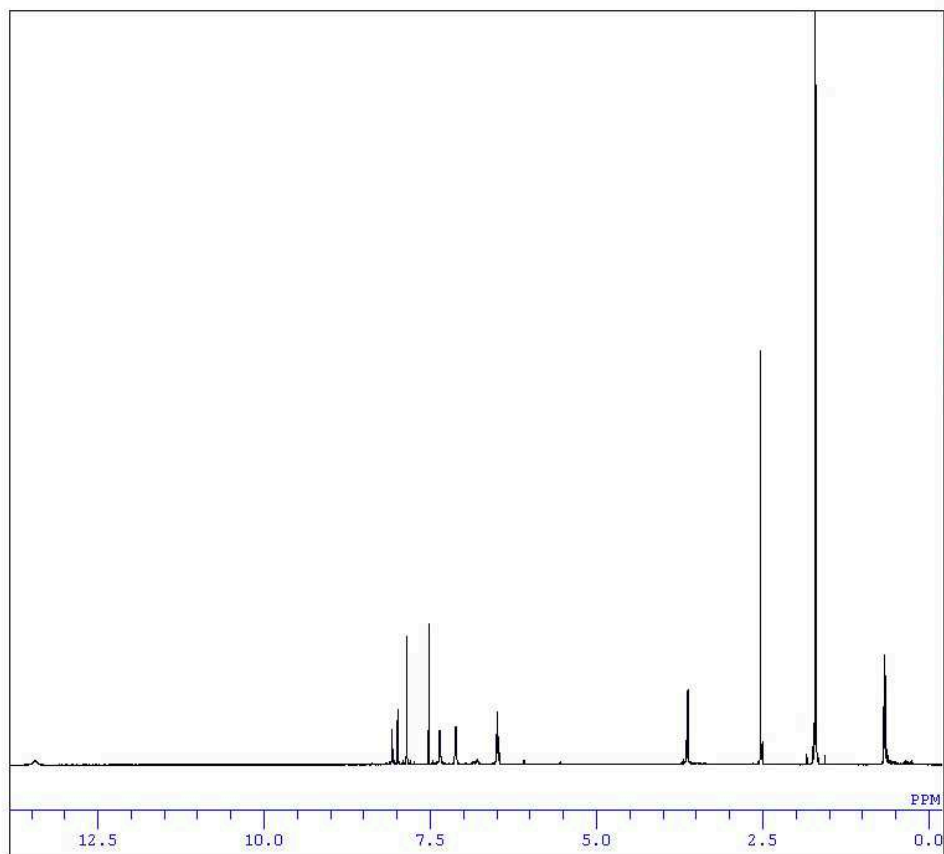


DFILE E:\MR'effl[f^]NMR 500MHz\53 m  
COMNT  
DATIM 2012/Feb/07 13:31:36  
OBNUC 1H  
EXMOD zg30  
OBFRQ 500.23 MHz  
OBSET 0.00 KHz  
OBFIN 3078.1 Hz  
POINT 131072  
FREQU 10330.6 Hz  
SCANS 32  
ACQTM 3.172 sec  
PD 1.000 sec  
PW1 12.0 us  
IRNUC OFF  
CTEMP 22.1 c  
SLVNT CD2CL2  
EXREF 5.36 ppm  
BF 2.40 Hz  
RGAIN 81

2

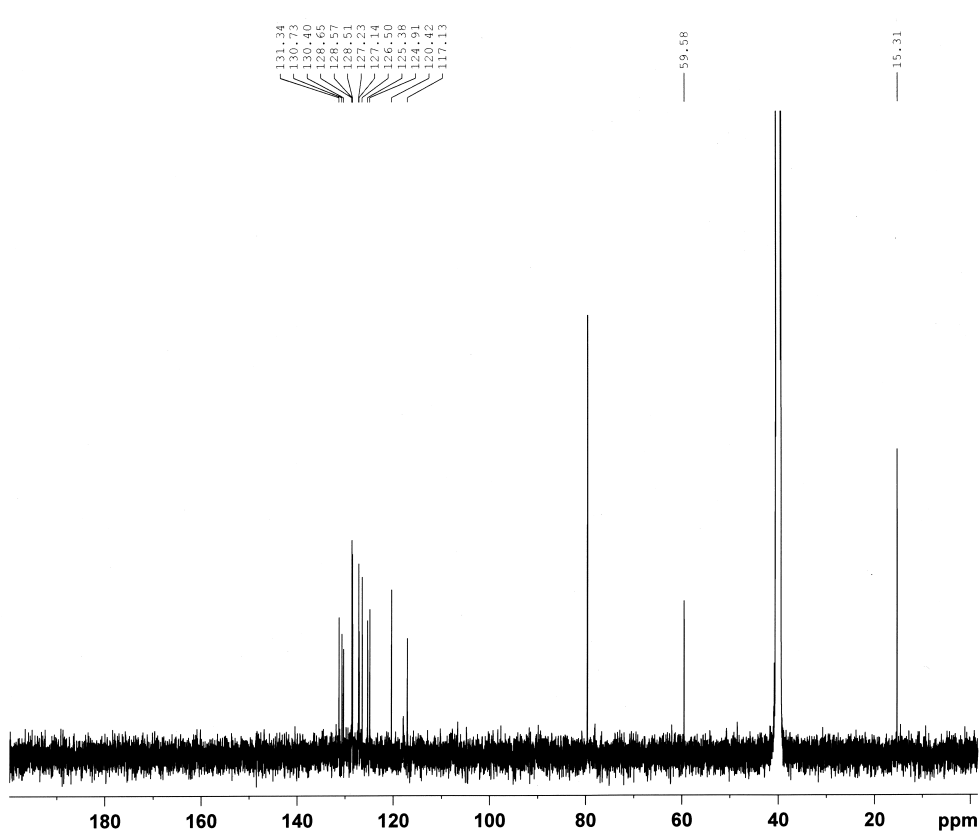
2





```
DFILE C:\ALICE\COMMON\fid.als
COMNT
DATIM 2011/Jan/24 16:13:17
OBNUC 1H
EXMOD zg30
OBFRQ 500.23 MHz
OBSET 0.00 KHz
OBFIN 3078.1 Hz
POINT 131072
FREQU 10330.6 Hz
SCANS 32
ACQTM 3.172 sec
PD 1.000 sec
PW1 12.0 us
IRNUC OFF
CTEMP 22.3 c
SLVNT DMSO
EXREF 2.54 ppm
BF 2.40 Hz
RGAIN 203
```

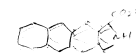
**3** in DMSO-d6



```
NAME UNO
EXPNO 40
PROCNO 1
Date_ 20110125
Time_ 9.18
INSTRUM spect
PROBHD 5 mm PABBO BB-
PULPROG zgpg30
TD 65536
SOLVENT DMSO
NS 18543
DS 4
SWH 29761.904 Hz
FIDRES 0.454131 Hz
AQ 1.1010548 sec
RG 203
DW 16.800 usec
DE 6.50 usec
TE 297.4 K
D1 2.00000000 sec
D11 0.03000000 sec
TD0 1
```

```
===== CHANNEL f1 =====
NUC1 13C
P1 9.00 usec
PL1 -0.90 dB
PL1W 119.28540039 W
SFO1 125.7955118 MHz
```

```
===== CHANNEL f2 =====
CPDPRG2 waltz16
NUC2 1H
PCPD2 80.00 usec
PL2 -0.10 dB
PL12 16.38 dB
PL13 18.20 dB
PL2W 24.70150375 W
PL12W 0.55555040 W
PL13W 0.36536196 W
SFO2 500.2320009 MHz
SI 32768
SF 125.7829340 MHz
WDW EM
SSB 0
LB 1.00 Hz
GB 0
PC 1.40
```



3