

Fig. S1 Effect of pan-milling on the percentage crystallinity index (% CrI) of WCF.

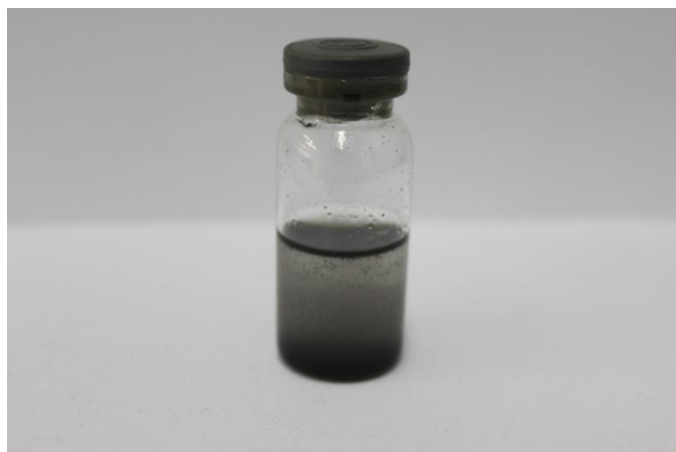


Fig. S2 Digital micrograph of WCF/IL (0.5 wt%) blend after heated at 100 °C for 12 h.

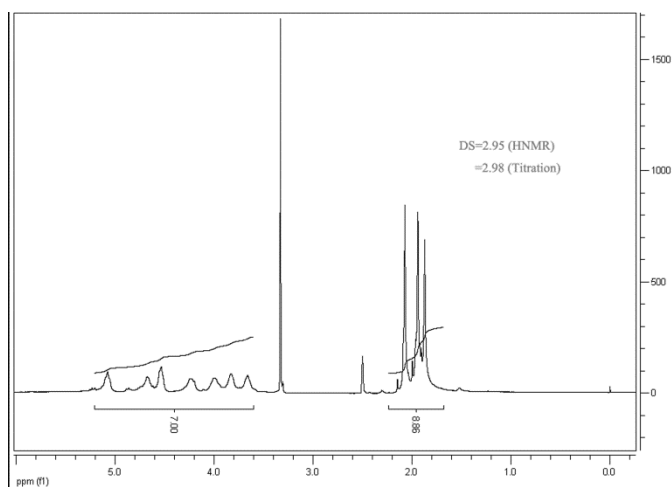


Fig. S3 <sup>1</sup>H NMR spectrum of the CA sample produced using 75 mol% IL and its DS



S4 Digital micrograph of the water solution detrived from Soxhlet extracting WCF for 24 h