

Supplementary Information

Strong Fluorescence of a Hyperbranched Phosphate: Origins and Dependence on Various Factors

Tuan Liu, Yan Meng, Xiaochen Wang, Haiqiao Wang and Xiaoyu Li

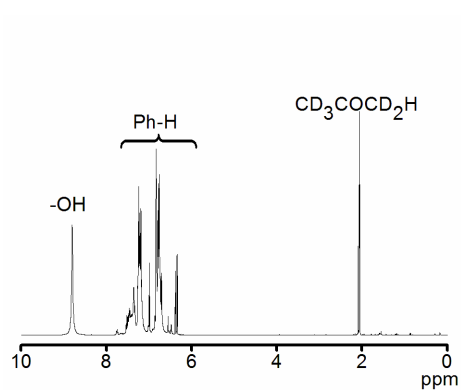


Figure S1. The ^1H NMR spectra of HHPP.

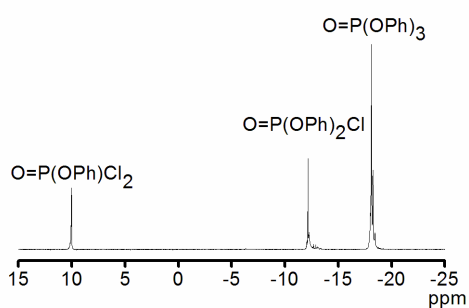


Figure S2. The ^{31}P NMR spectra of HHPP.

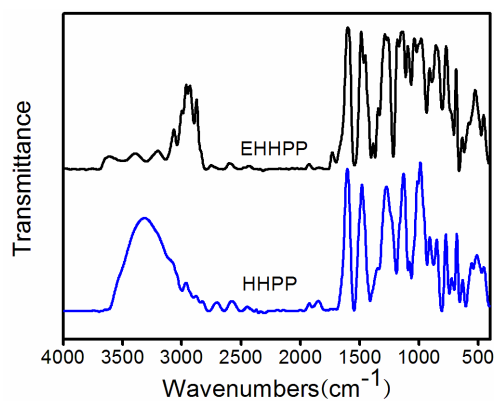


Figure S3. FTIR spectra of HHPP (bottom red curve) and EHHPP (top black curve).

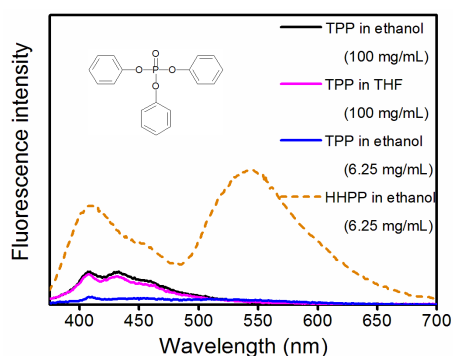


Figure S4. The fluorescence spectra of TPP in ethanol and THF solutions at a concentration of 100 mg/mL are shown as black and red curves. The fluorescence spectra of HHPP (dashed curve) and TPP (blue curve) at the concentration of 6.25 mg/mL in ethanol are also shown. The chemical structure of TTP is also shown.

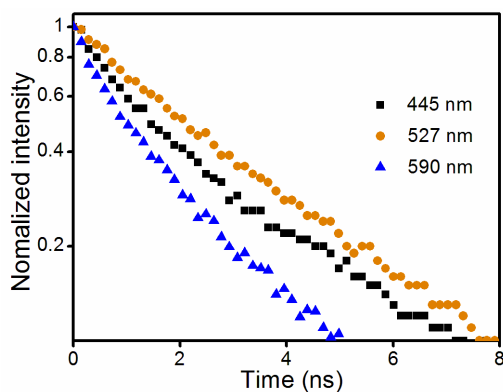


Figure S5. Time-resolved fluorescence decays for HHPP in ethanol at pH=11. The three wavelengths correspond with the three maximum peaks in Figure 6B.