

Electronic Supplementary Material (ESI) for RSC Advances  
This journal is © The Royal Society of Chemistry 2012

## *Supporting Information for*

### **In(OTf)<sub>3</sub> Catalyzed C3-benylation of Indoles with Benzyl**

#### **Alcohols in Water**

*Lin Wu,<sup>a</sup> Ran Jiang,<sup>b</sup> Jin-Ming Yang,<sup>a</sup> Shun-Yi Wang<sup>b\*</sup> and Shun-Jun Ji<sup>b\*</sup>*

<sup>a</sup> Key Laboratory of Coastal Wetland Bioresources and Environmental Protection of Jiangsu Province, College of Chemistry and Chemical Engineering, Yancheng Teachers University, Yancheng 224002, China

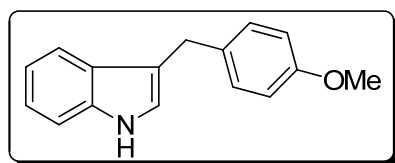
<sup>b</sup>Key Laboratory of Organic Synthesis of Jiangsu Province, College of Chemistry, Chemical Engineering and Materials Science, Soochow University, Suzhou 215123, China.

*E-mail: shunyi@suda.edu.cn; chemjsj@suda.edu.cn*

#### **Table of Contents**

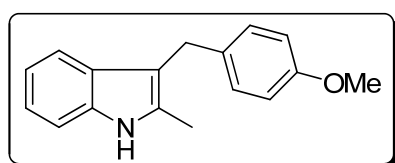
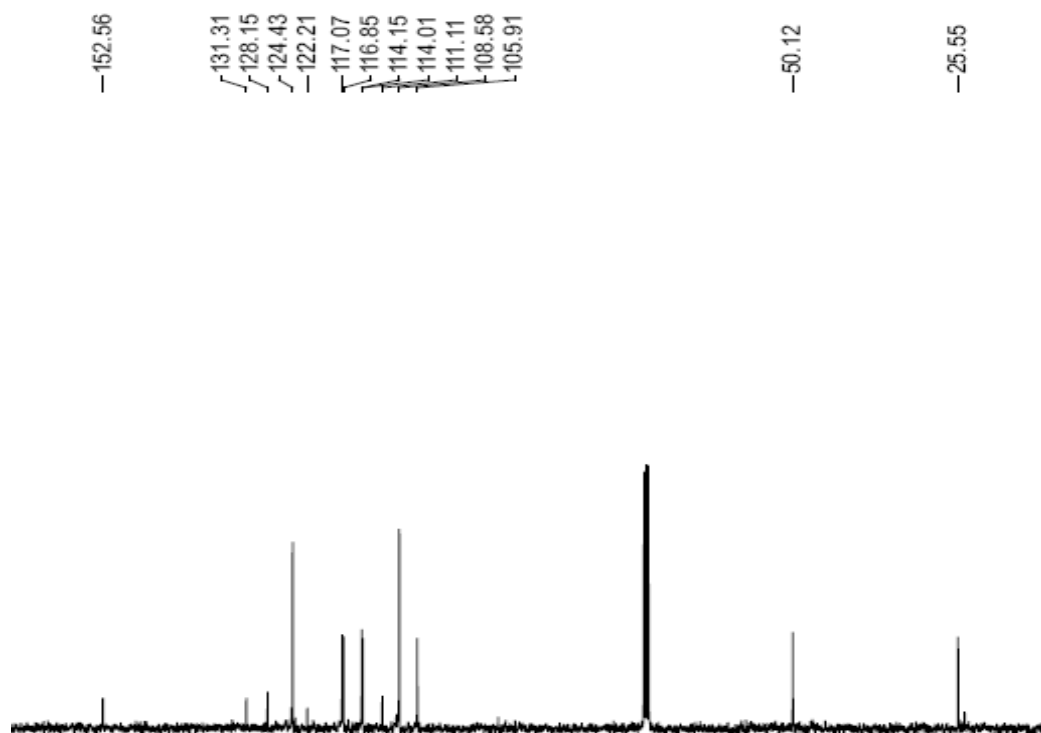
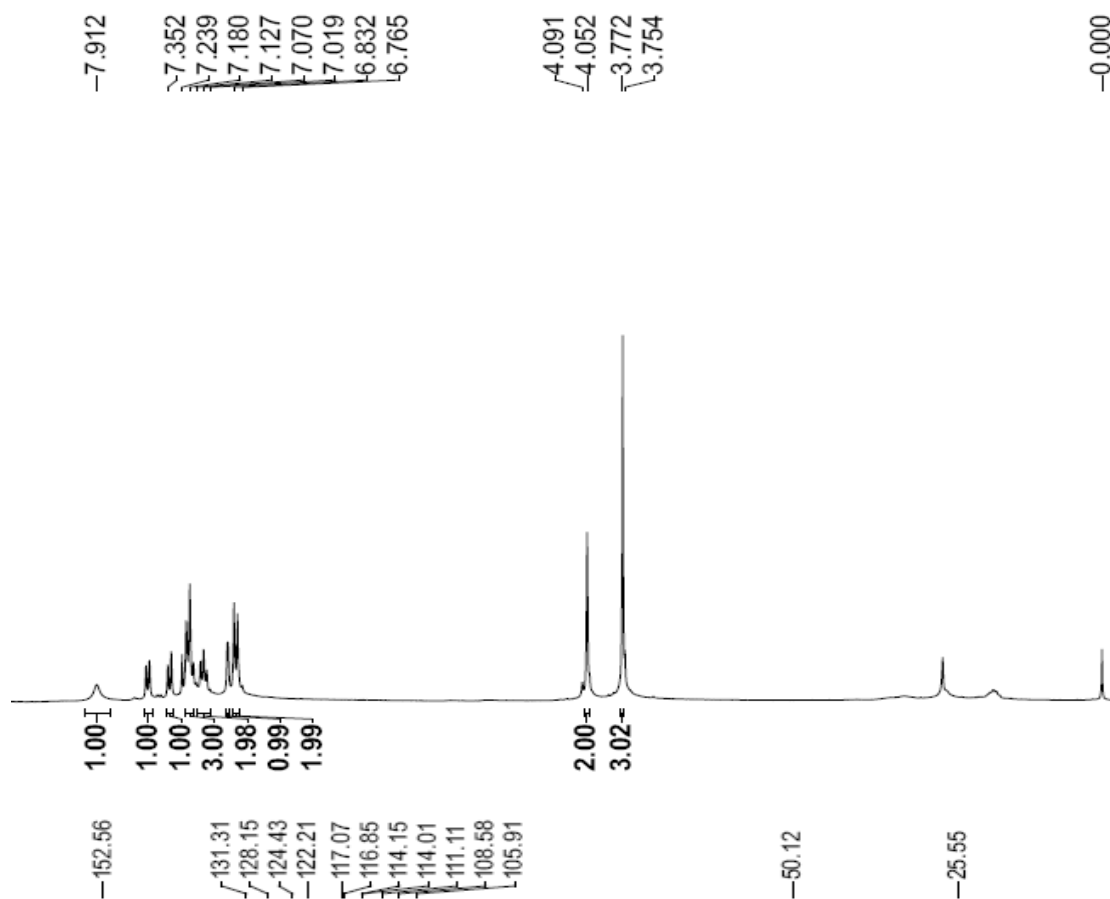
**Copies of <sup>1</sup>H and <sup>13</sup>C NMR Spectra**

S2-S22



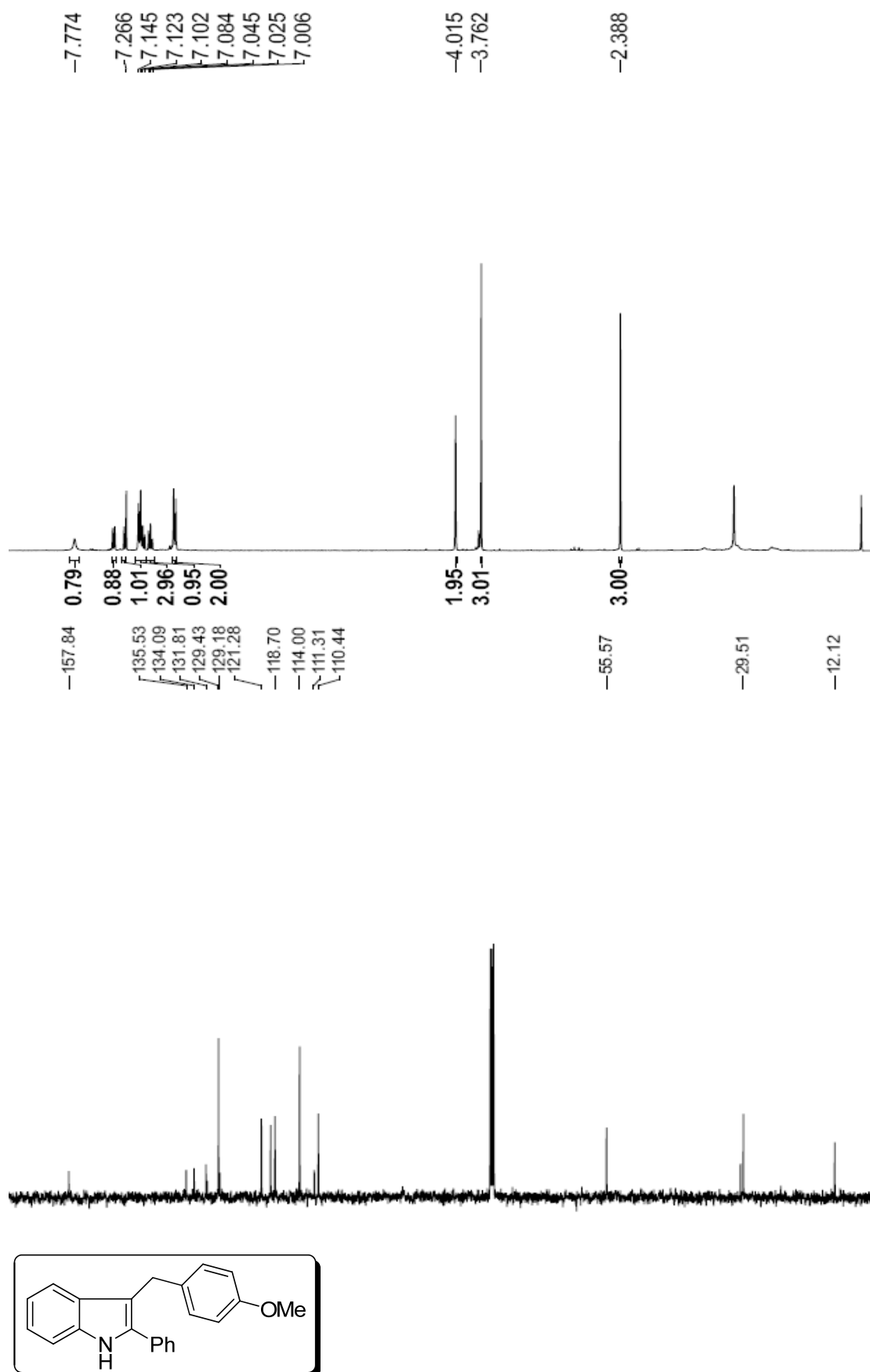
**3-(4-Methoxy-benzyl)-1H-indole (3a)**

Electronic Supplementary Material (ESI) for RSC Advances  
This journal is © The Royal Society of Chemistry 2012



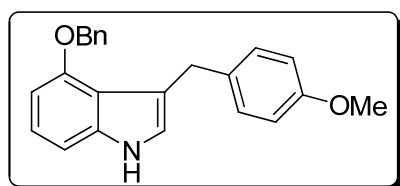
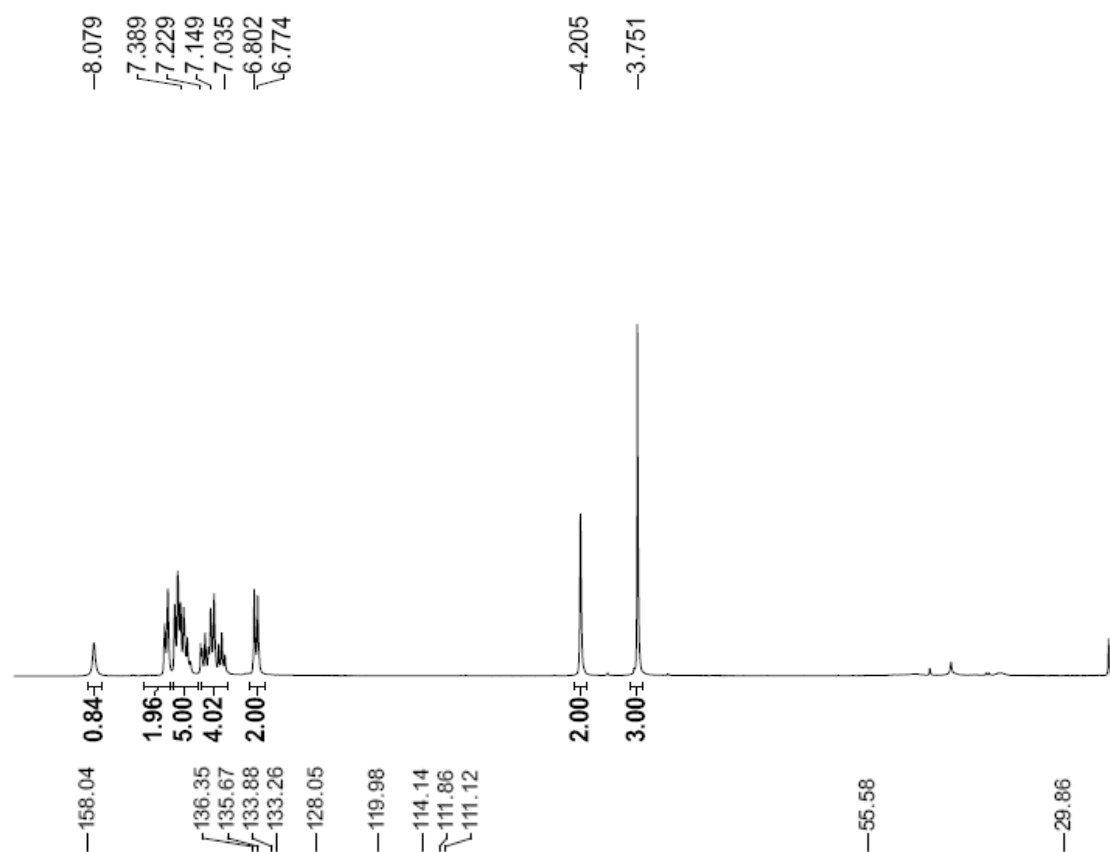
Electronic Supplementary Material (ESI) for RSC Advances  
This journal is © The Royal Society of Chemistry 2012

### 3-(4-methoxybenzyl)-2-methyl-1H-indole(3b)



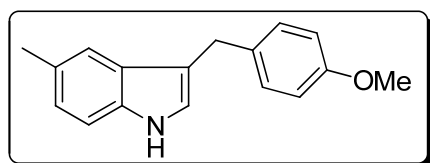
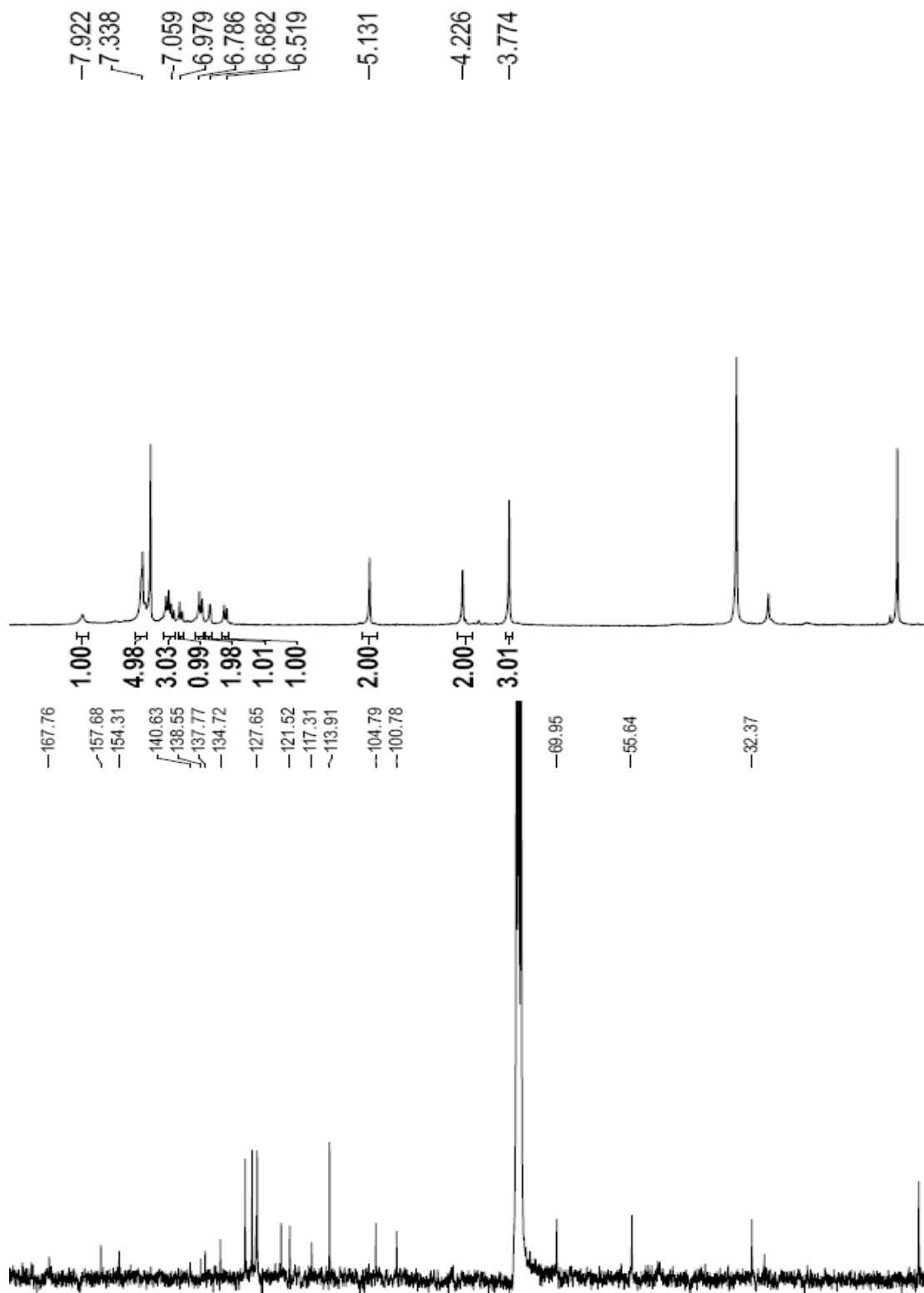
Electronic Supplementary Material (ESI) for RSC Advances  
This journal is © The Royal Society of Chemistry 2012

### 3-(4-methoxybenzyl)-2-phenyl-1H-indole (3c)



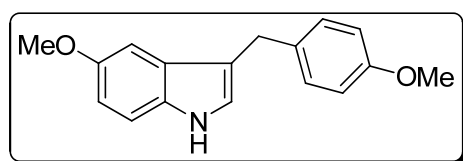
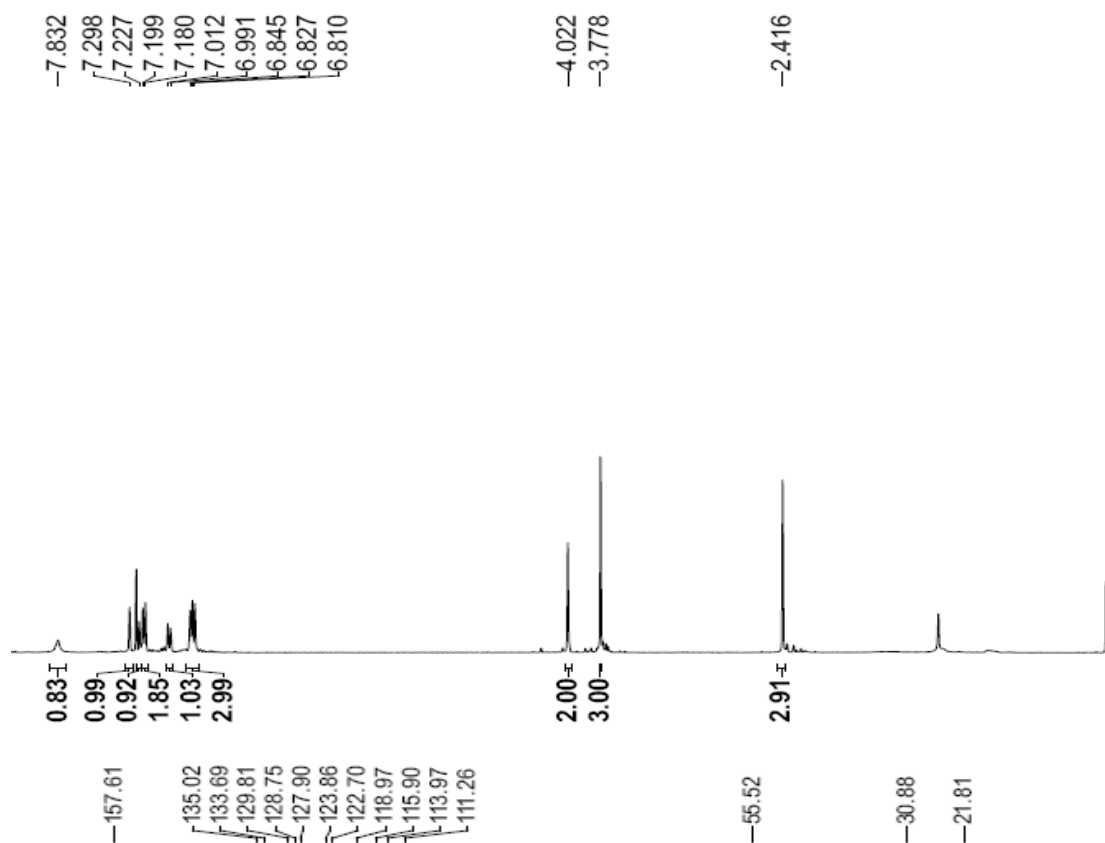
### 4-(benzyloxy)-3-(4-methoxybenzyl)-1H-indole (3f)

Electronic Supplementary Material (ESI) for RSC Advances  
This journal is © The Royal Society of Chemistry 2012



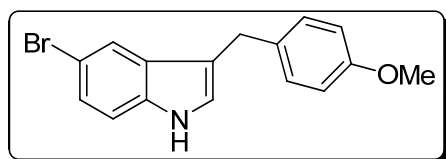
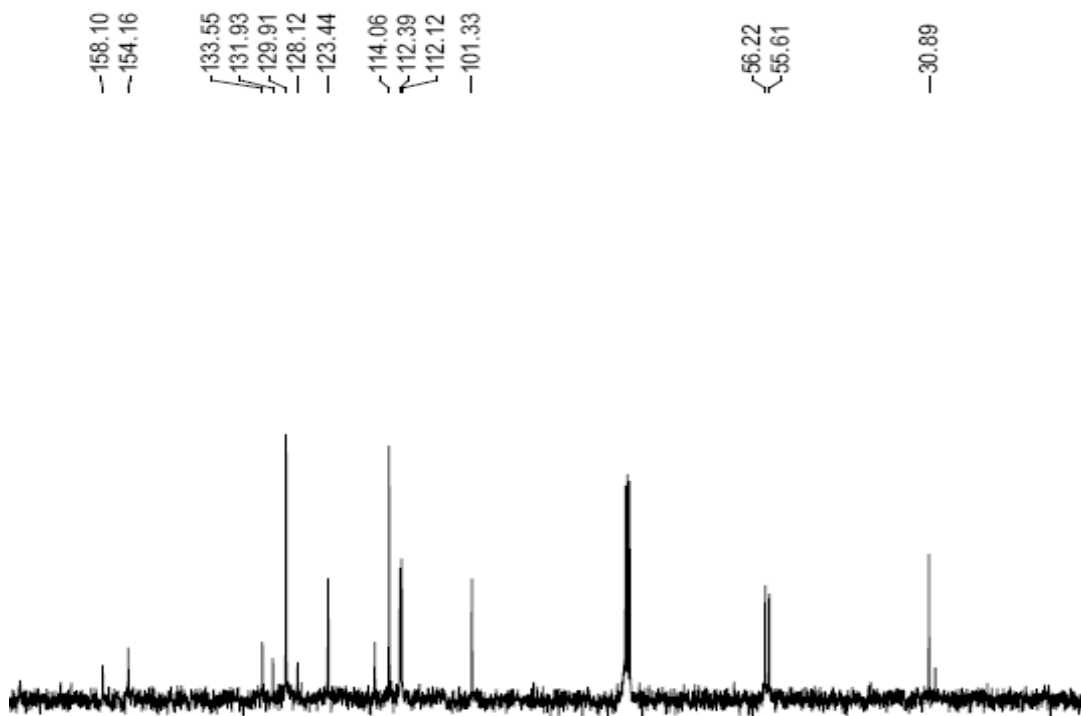
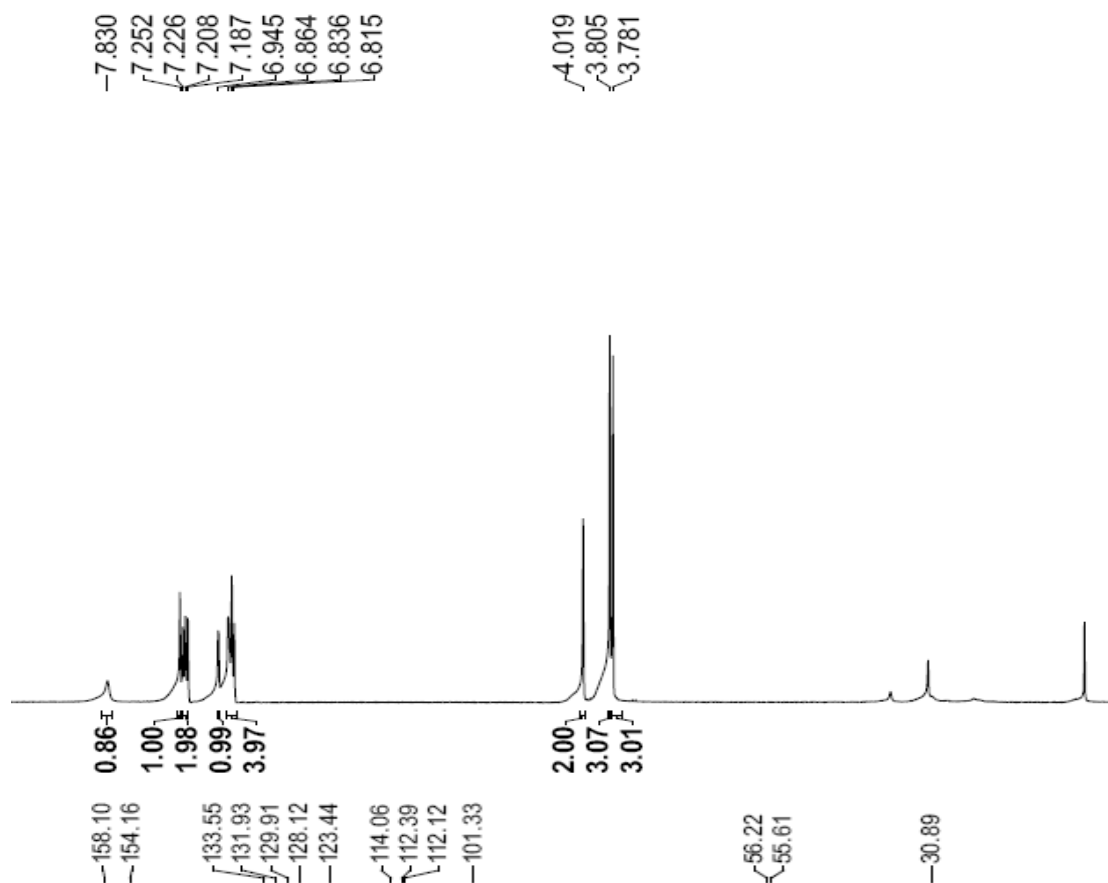
**3-(4-methoxybenzyl)-5-methyl-1H-indole (3g)**

Electronic Supplementary Material (ESI) for RSC Advances  
This journal is © The Royal Society of Chemistry 2012



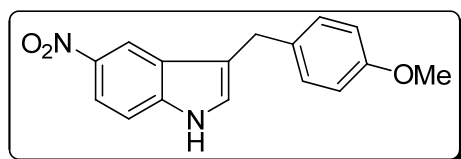
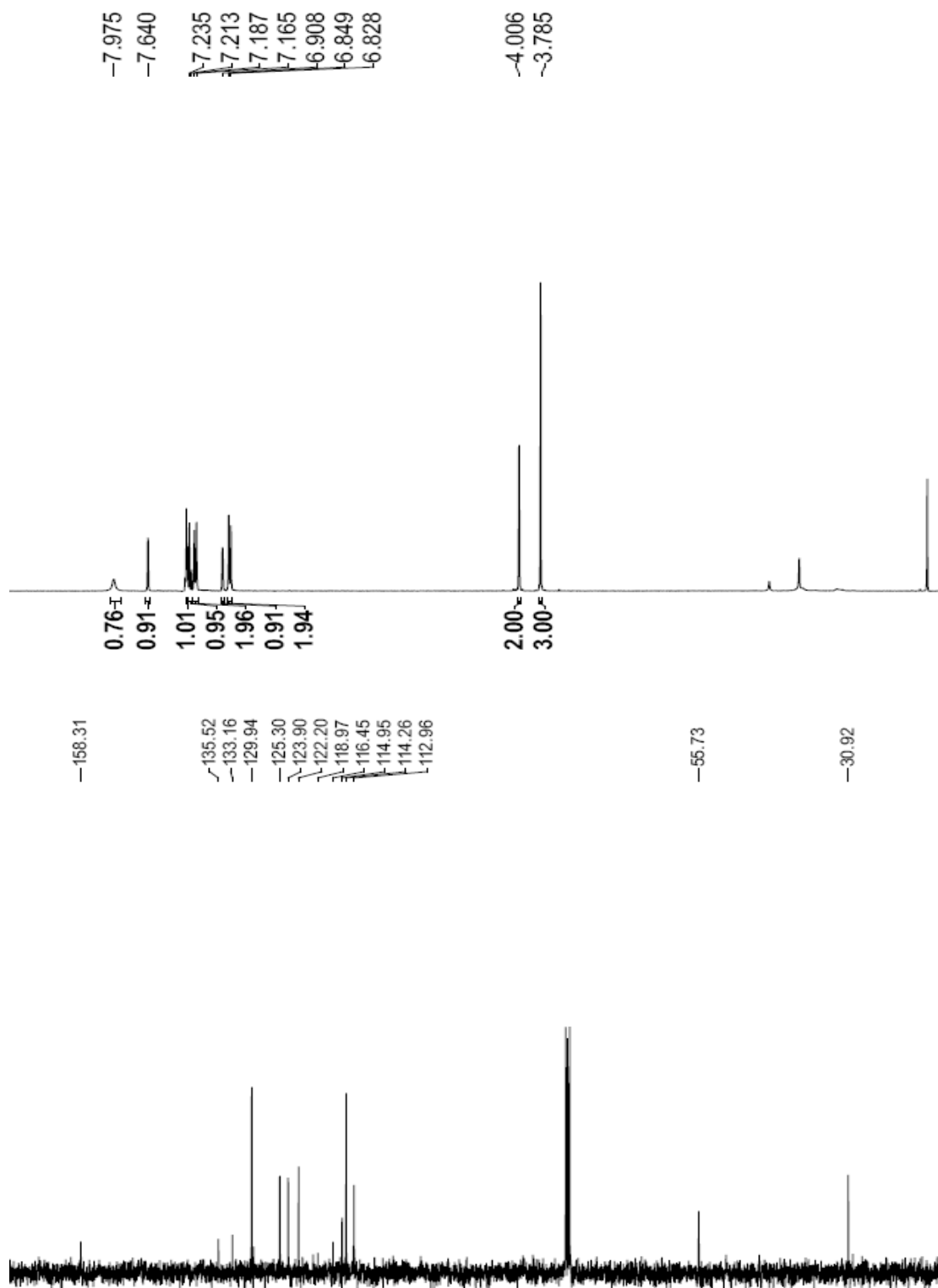
**5-methoxy-3-(4-methoxybenzyl)-1H-indole (3h)**

Electronic Supplementary Material (ESI) for RSC Advances  
This journal is © The Royal Society of Chemistry 2012



**5-bromo-3-(4-methoxybenzyl)-1H-indole (3i)**

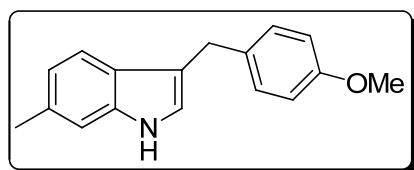
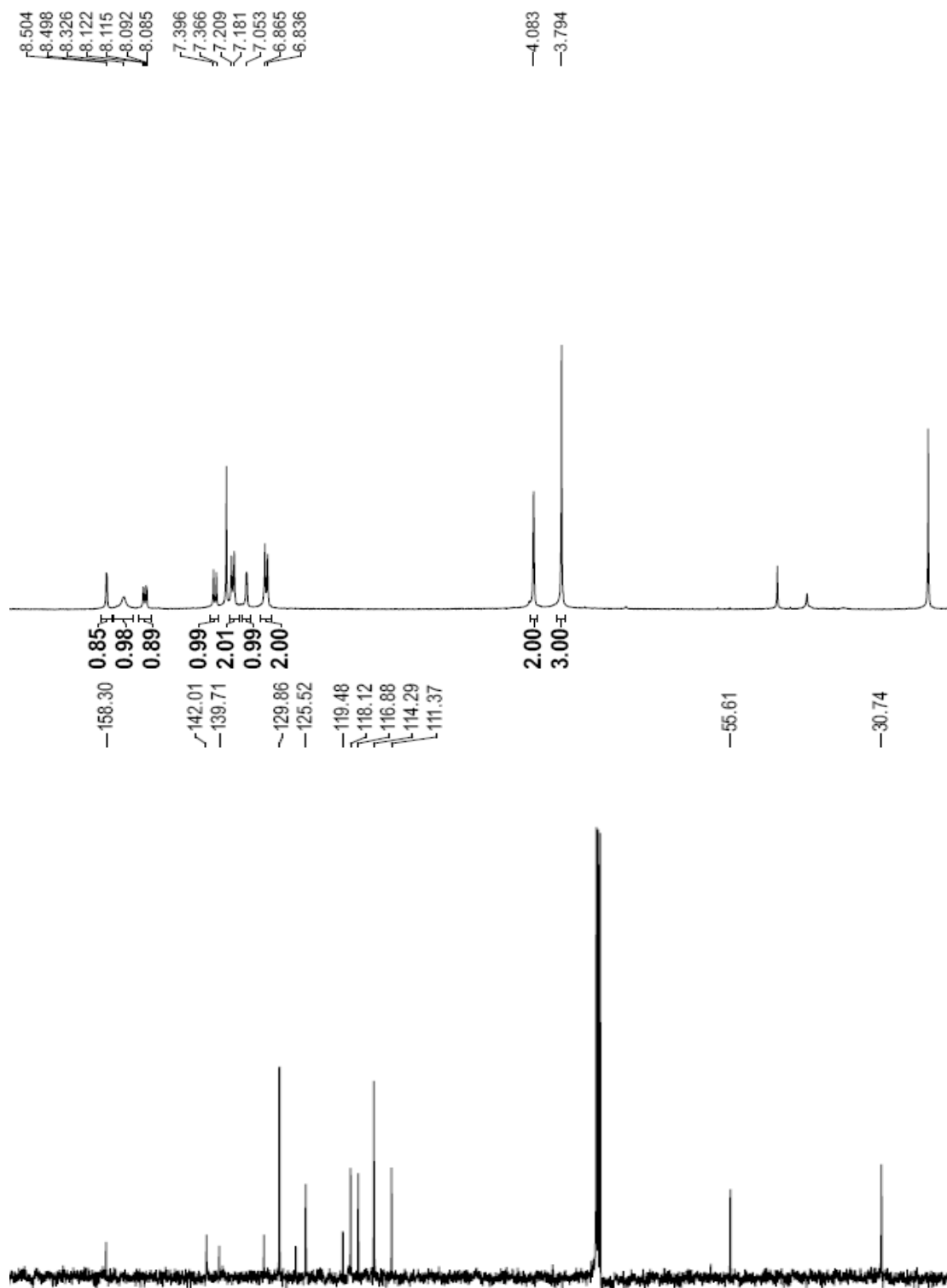
Electronic Supplementary Material (ESI) for RSC Advances  
This journal is © The Royal Society of Chemistry 2012



**3-(4-methoxybenzyl)-5-nitro-1H-indole (3j)**

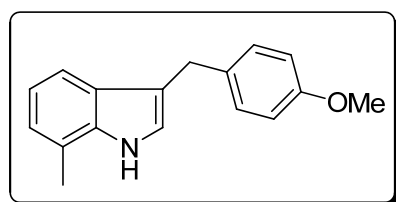
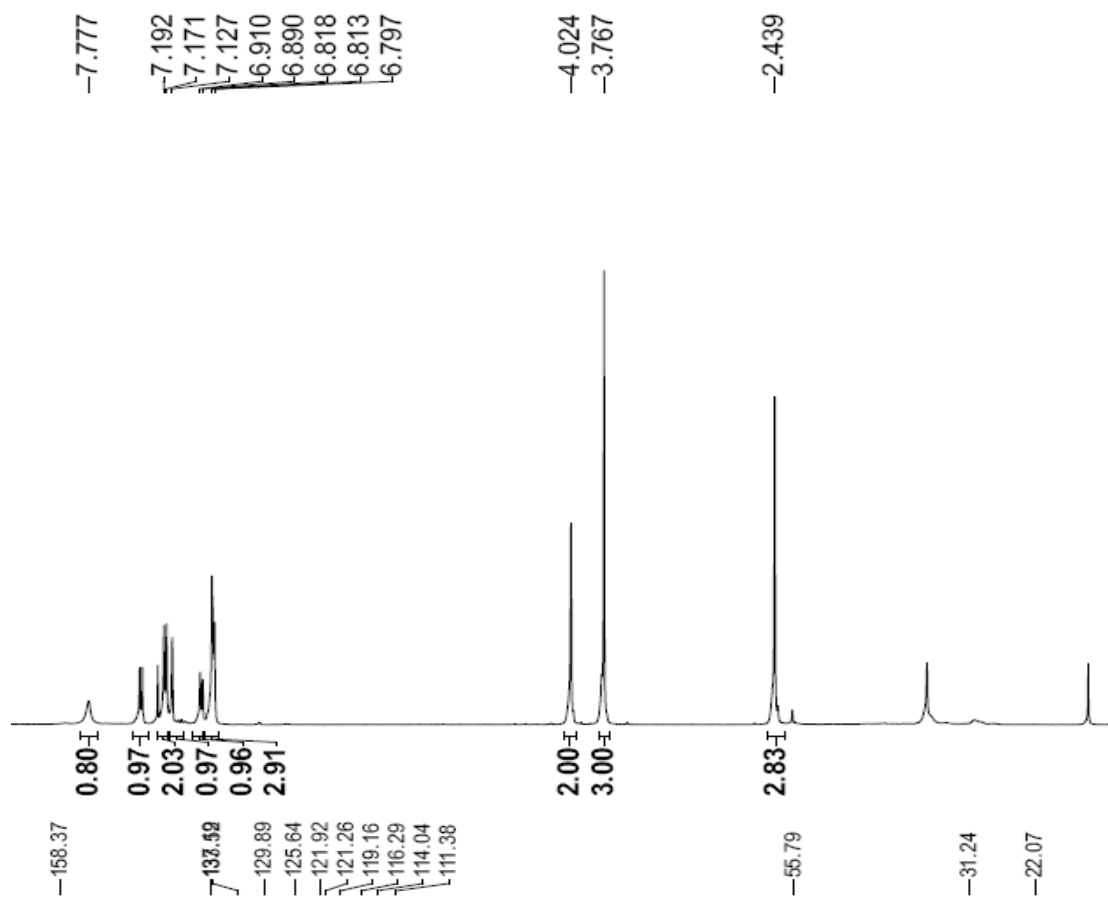


Electronic Supplementary Material (ESI) for RSC Advances  
This journal is © The Royal Society of Chemistry 2012



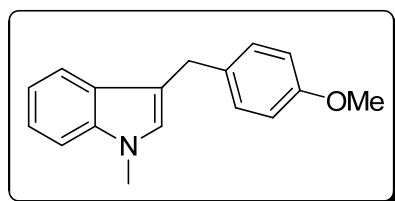
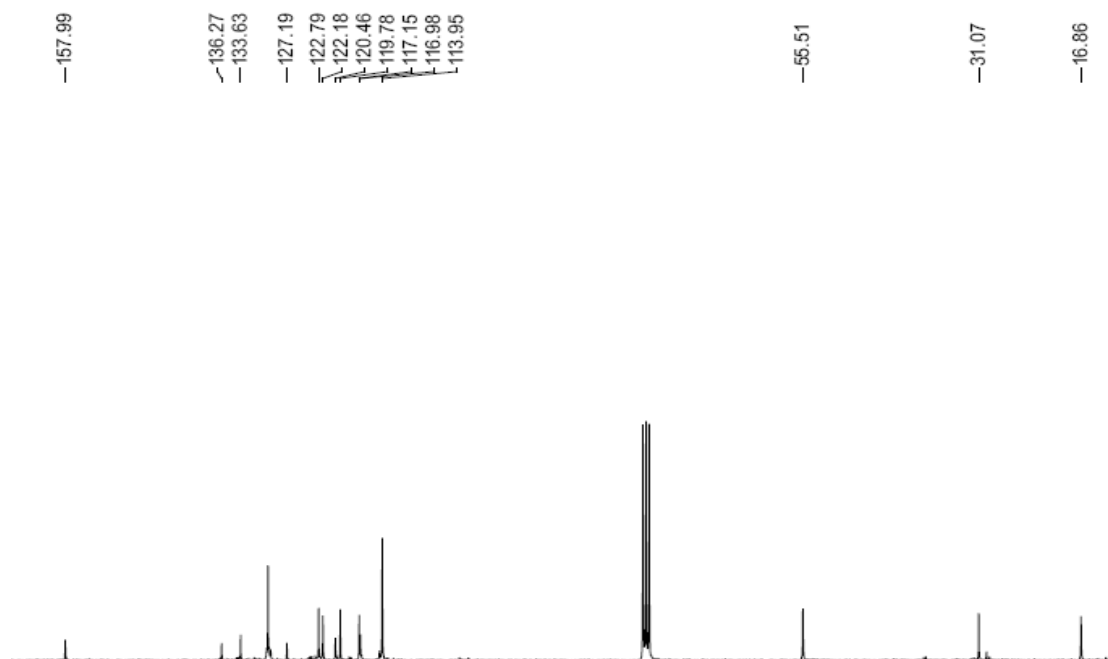
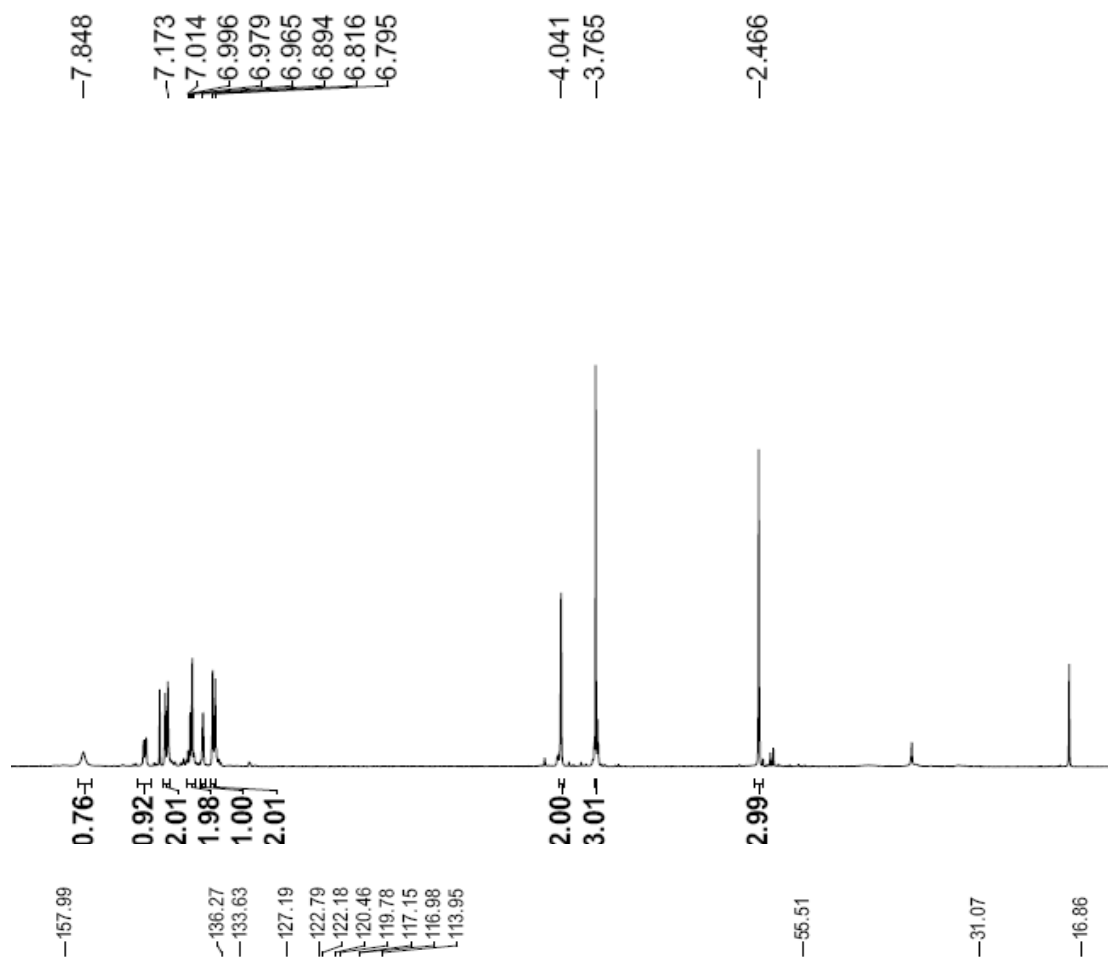
3-(4-methoxybenzyl)-6-methyl-1H-indole (3k)

Electronic Supplementary Material (ESI) for RSC Advances  
This journal is © The Royal Society of Chemistry 2012



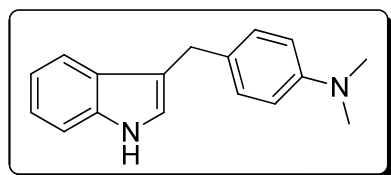
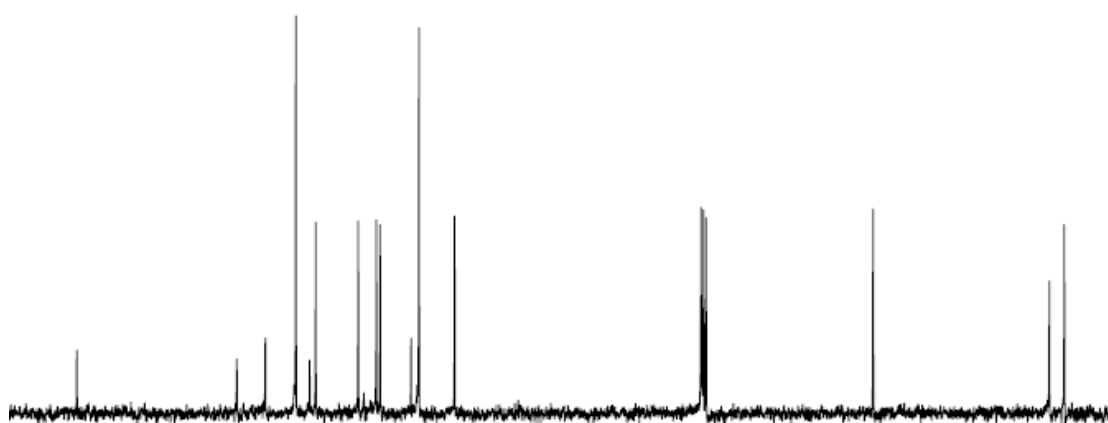
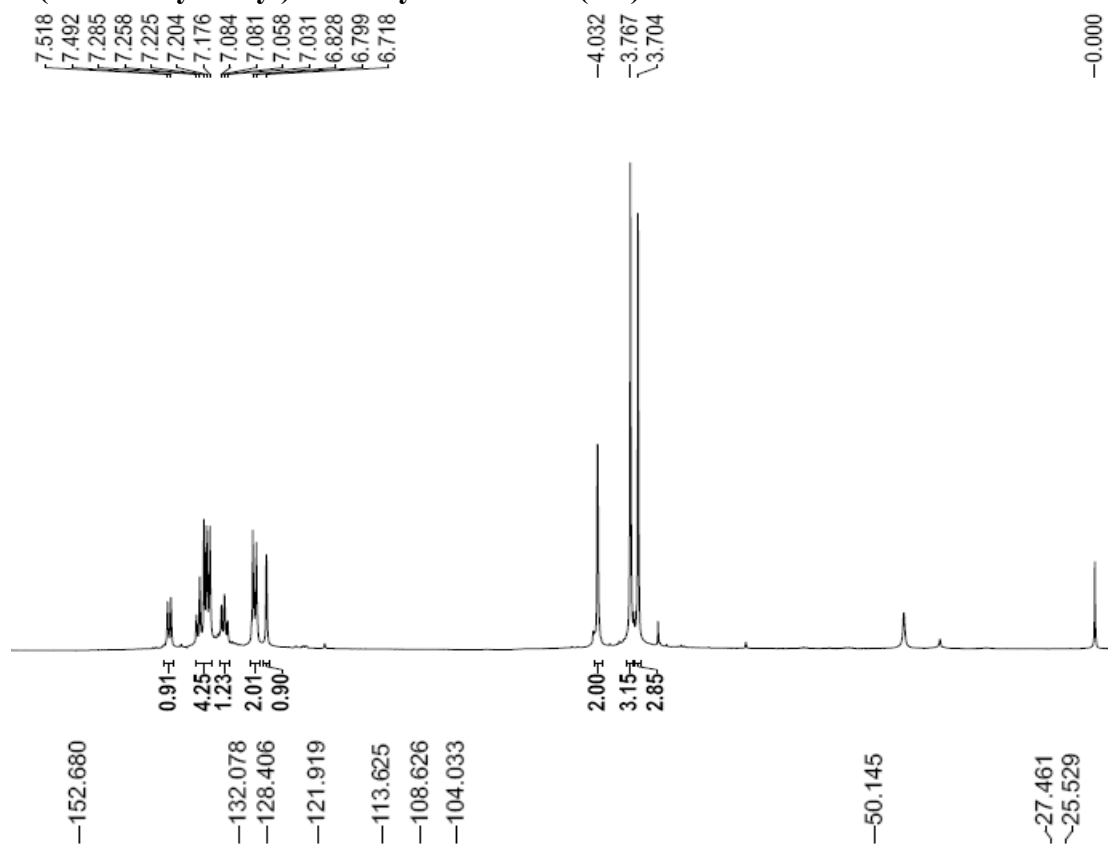
**3-(4-methoxybenzyl)-7-methyl-1H-indole (31)**

Electronic Supplementary Material (ESI) for RSC Advances  
This journal is © The Royal Society of Chemistry 2012



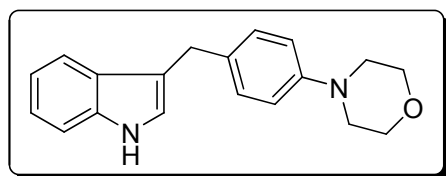
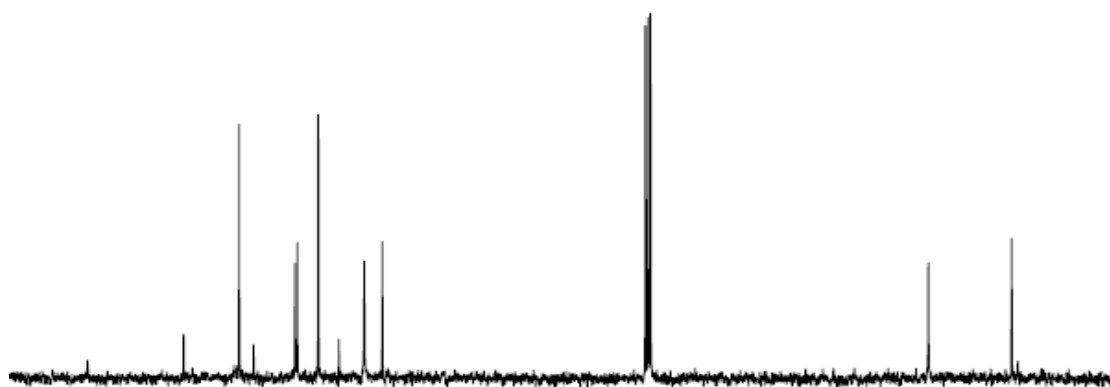
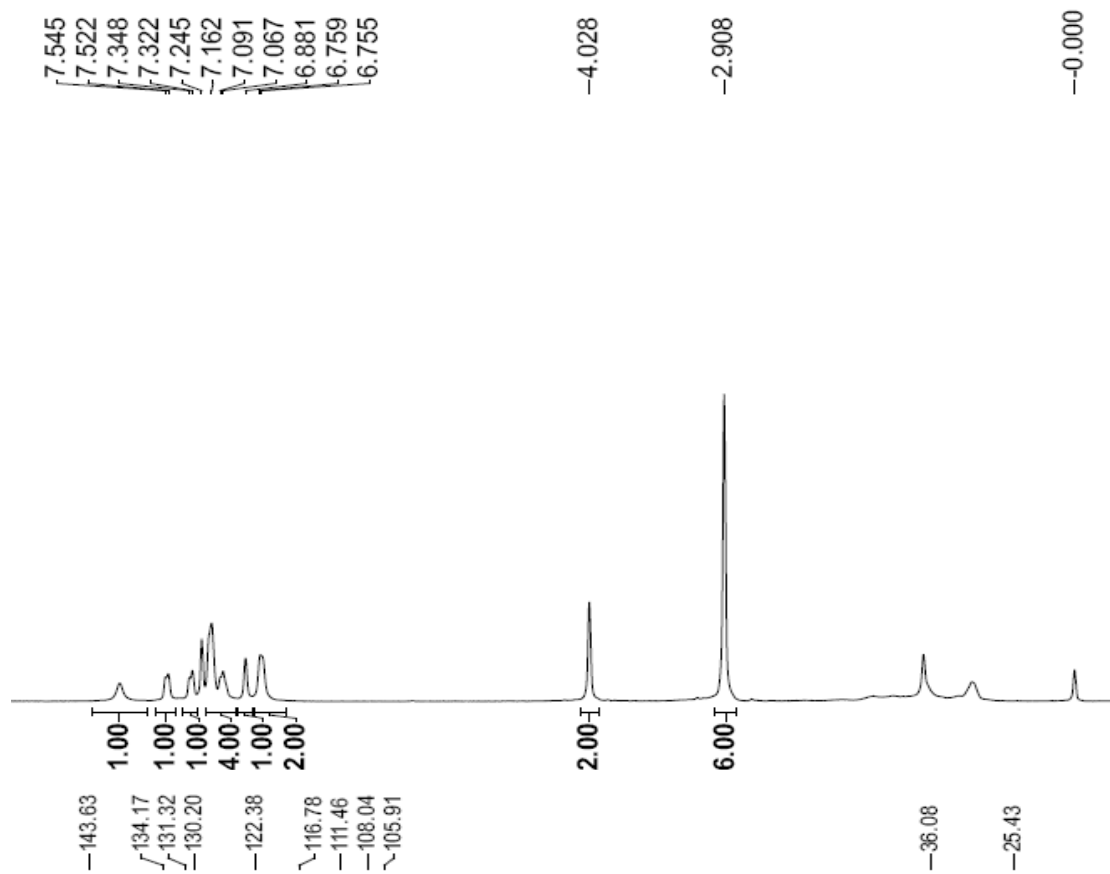
Electronic Supplementary Material (ESI) for RSC Advances  
This journal is © The Royal Society of Chemistry 2012

### 3-(4-methoxybenzyl)-1-methyl-1H-indole (3m)



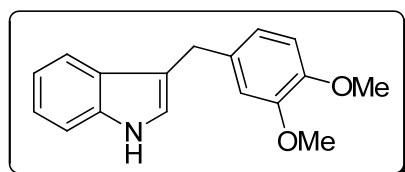
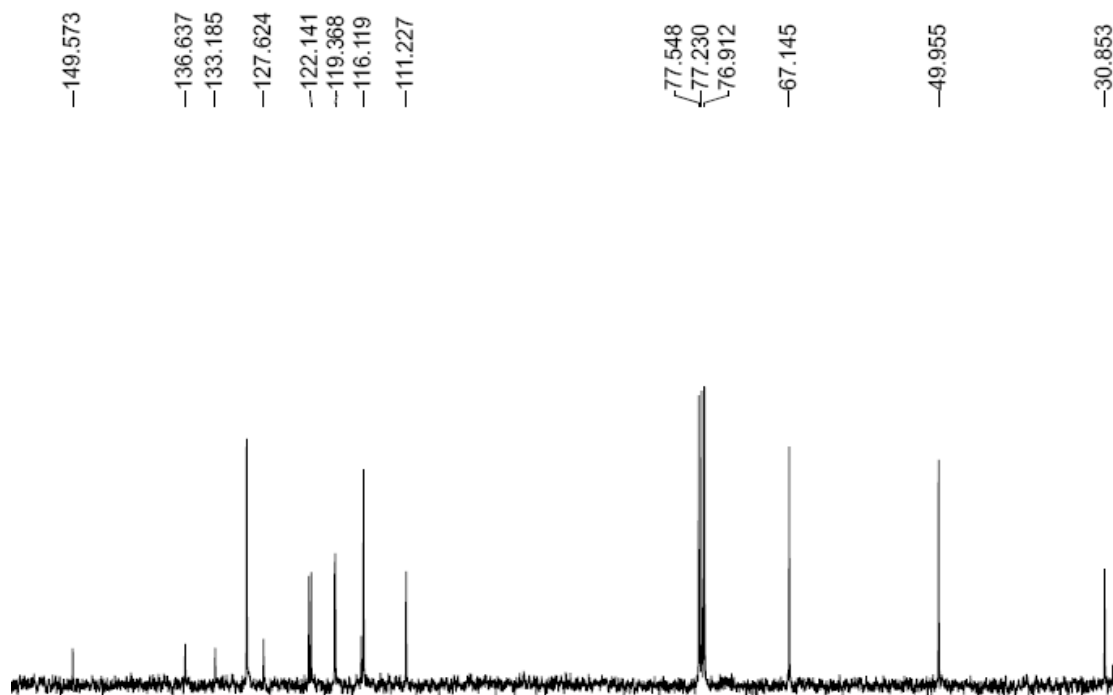
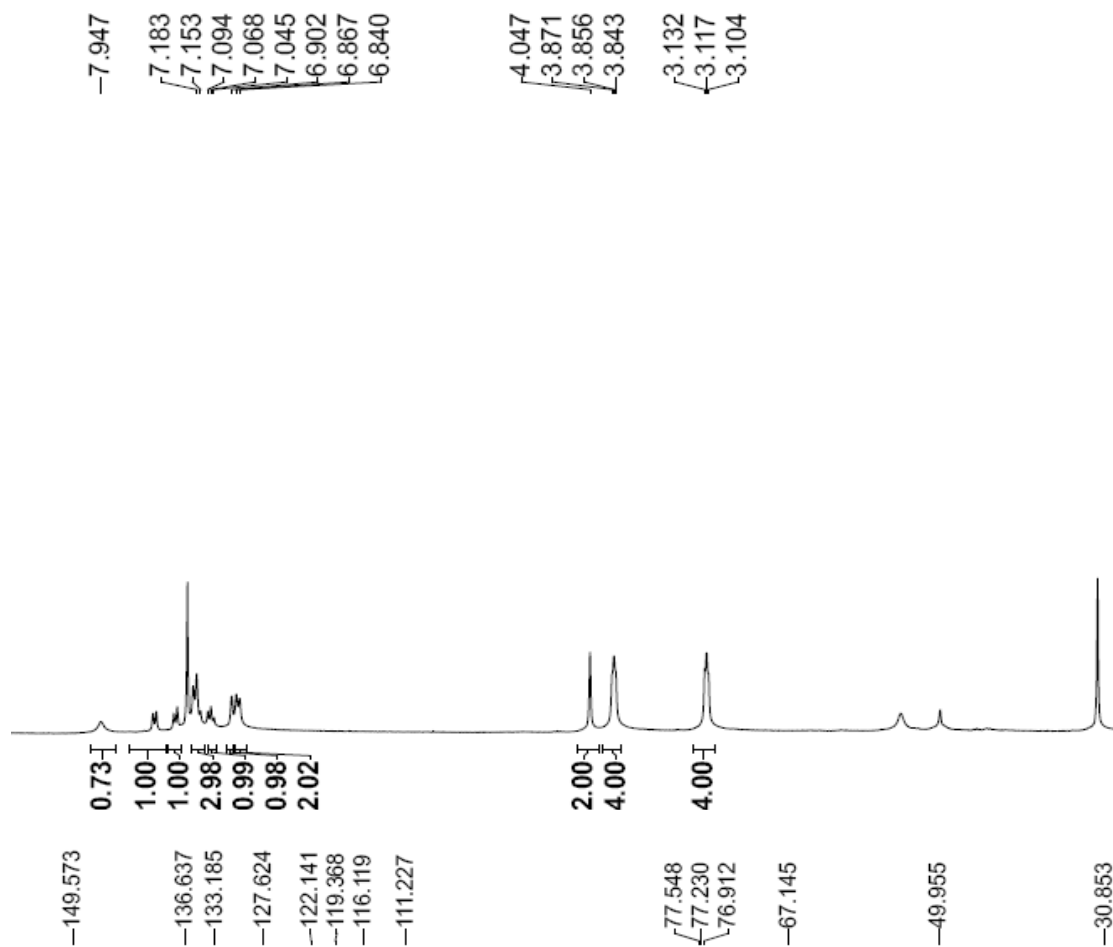
### 4-((1H-indol-3-yl)methyl)-N,N-dimethylaniline (3n)

Electronic Supplementary Material (ESI) for RSC Advances  
This journal is © The Royal Society of Chemistry 2012



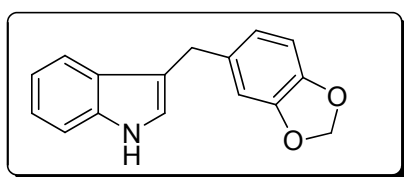
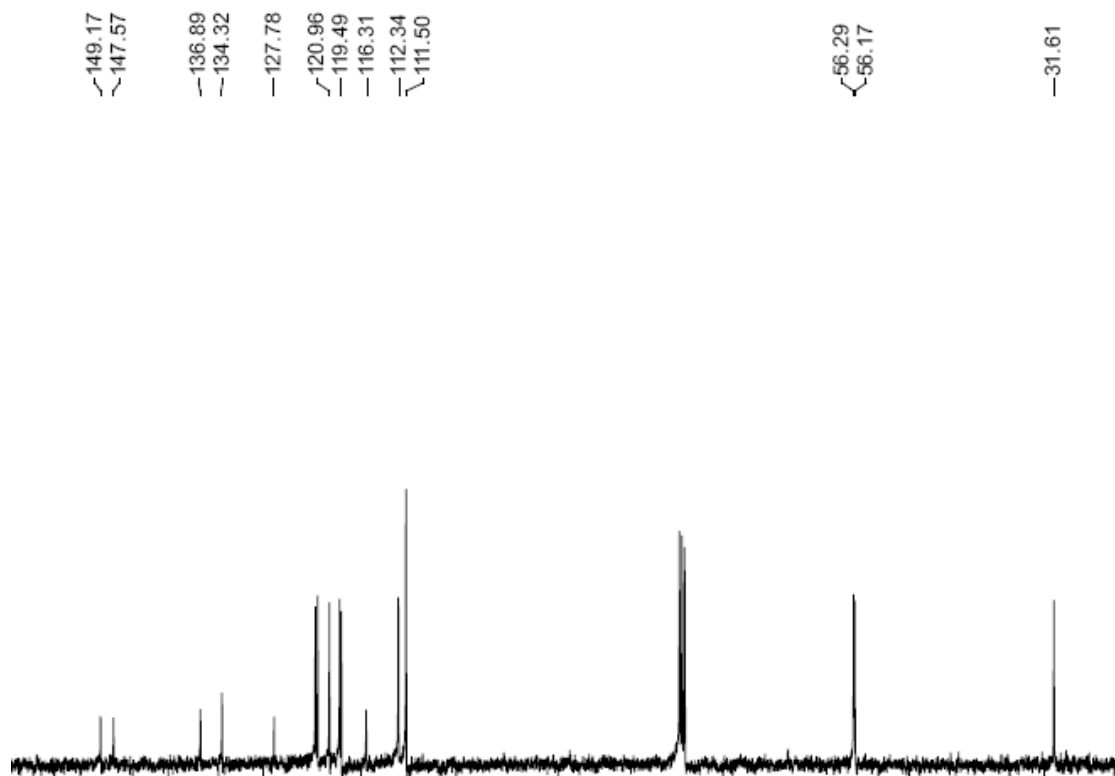
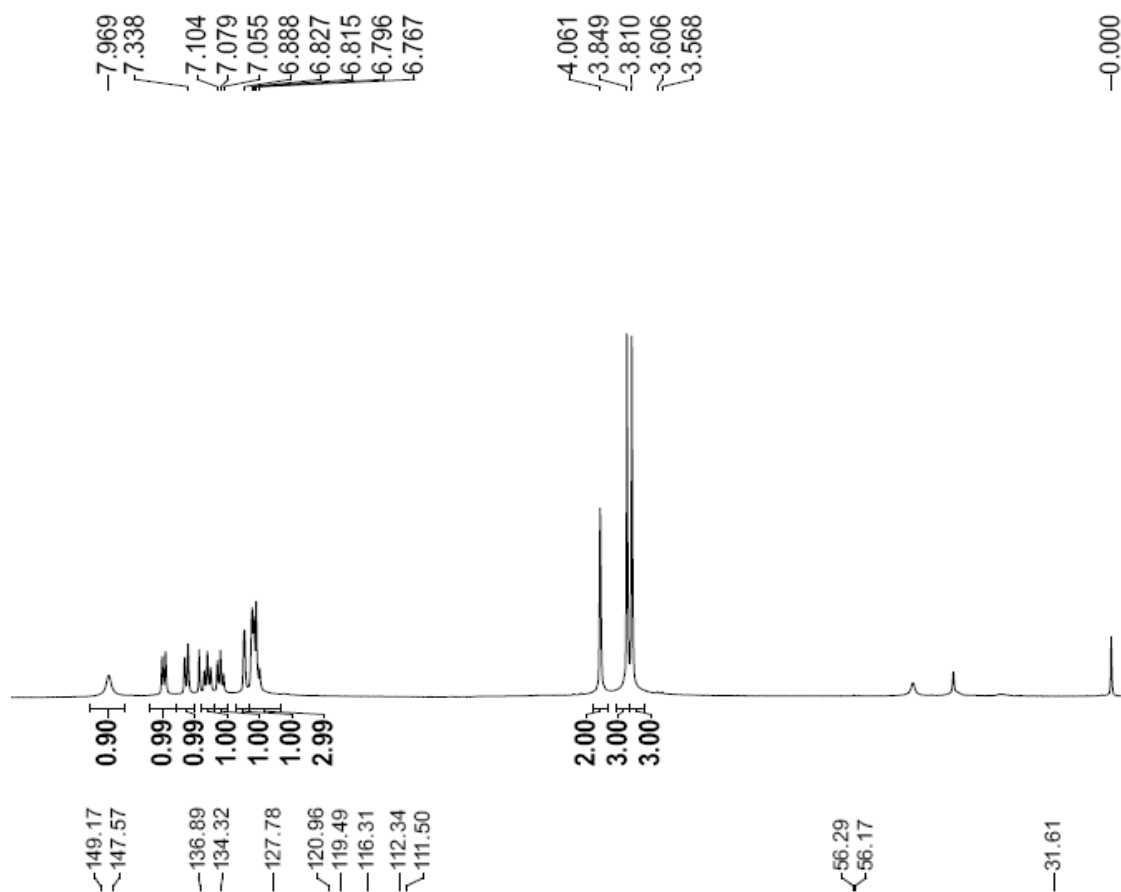
4-(4-((1H-indol-3-yl)methyl)phenyl)morpholine (3o)

Electronic Supplementary Material (ESI) for RSC Advances  
This journal is © The Royal Society of Chemistry 2012



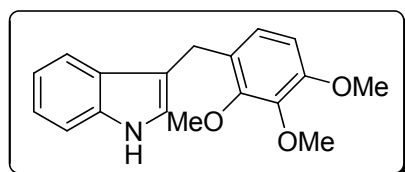
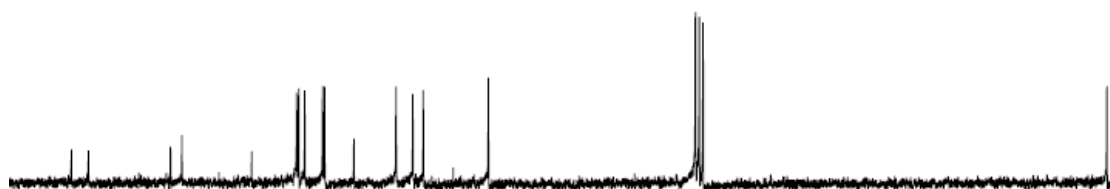
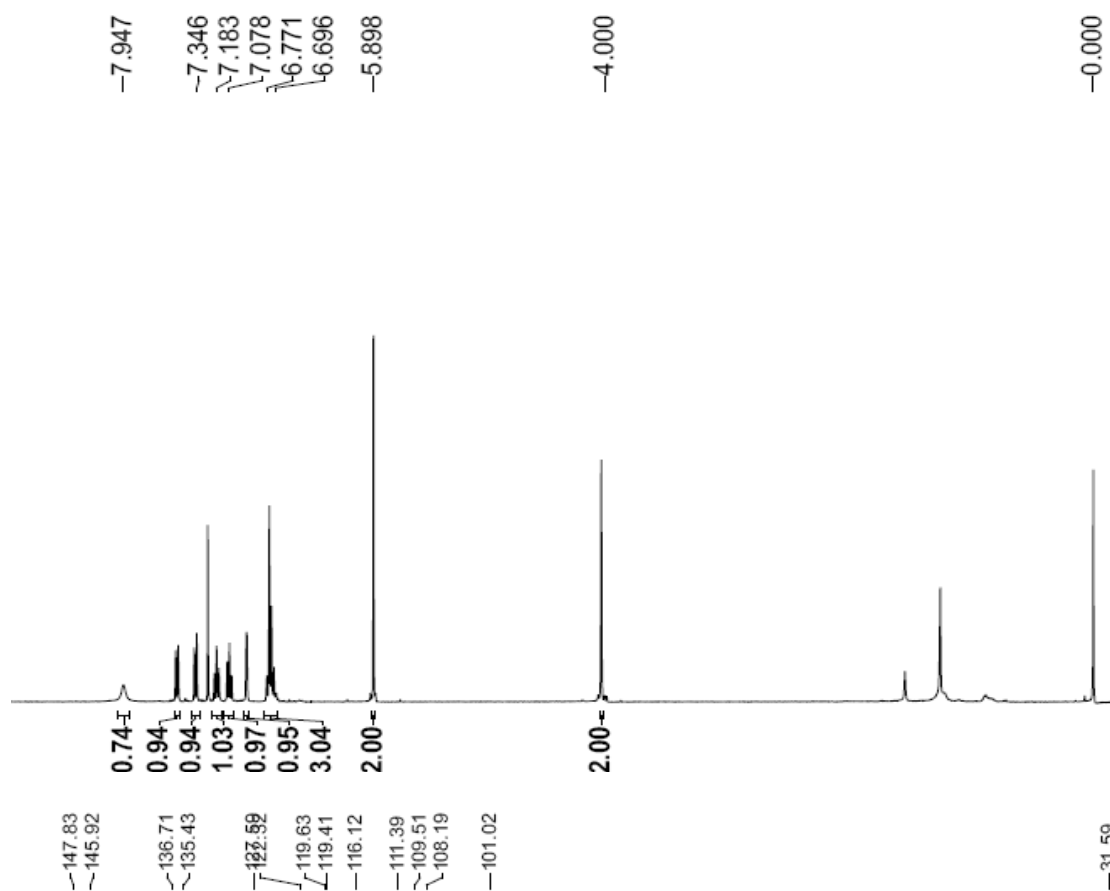
**3-(3,4-dimethoxybenzyl)-1H-indole(3p)**

Electronic Supplementary Material (ESI) for RSC Advances  
This journal is © The Royal Society of Chemistry 2012



Electronic Supplementary Material (ESI) for RSC Advances  
This journal is © The Royal Society of Chemistry 2012

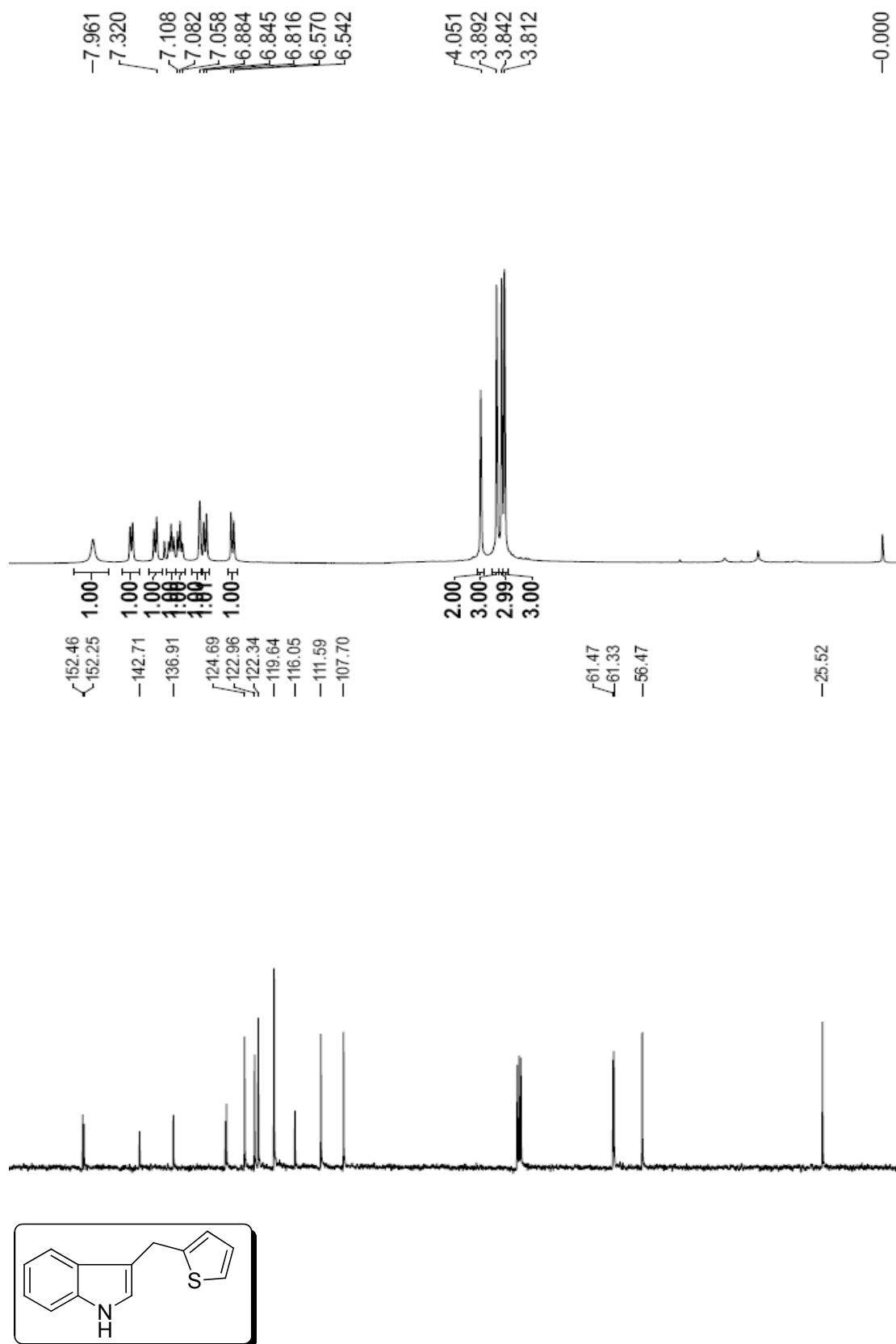
### 3-Benzo[1,3]dioxol-5-ylmethyl-1H-indole (3p)



### 3-(2,3,4-trimethoxybenzyl)-1H-indole (3r)

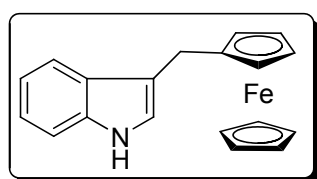
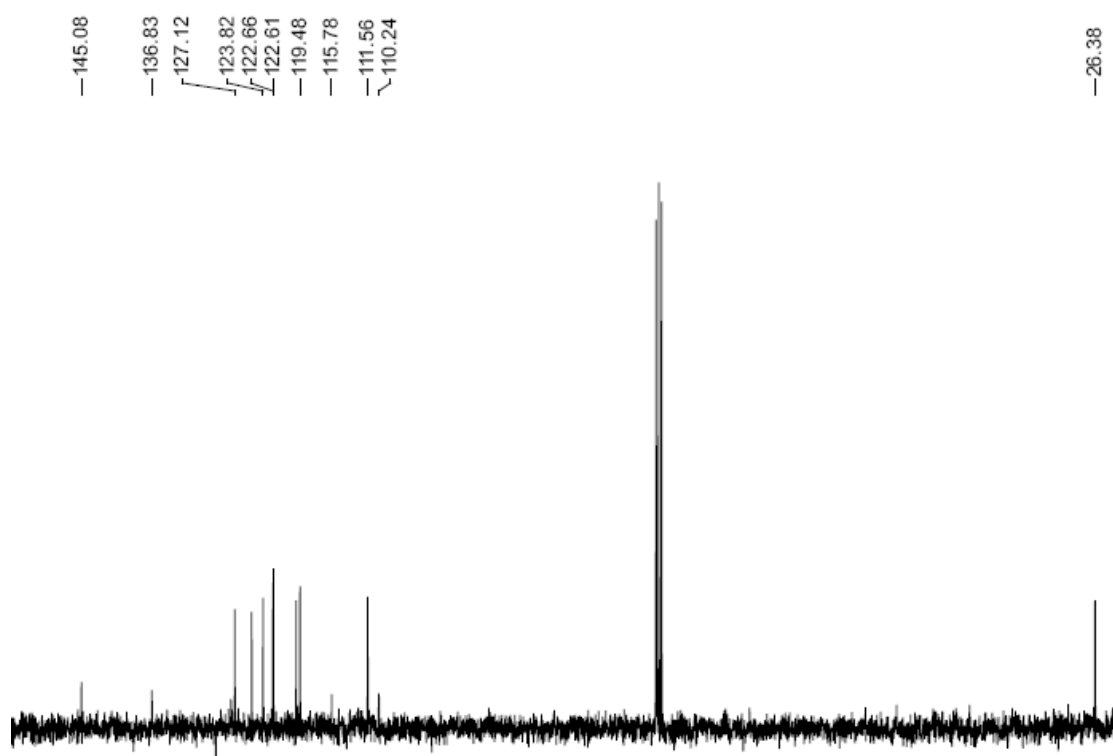
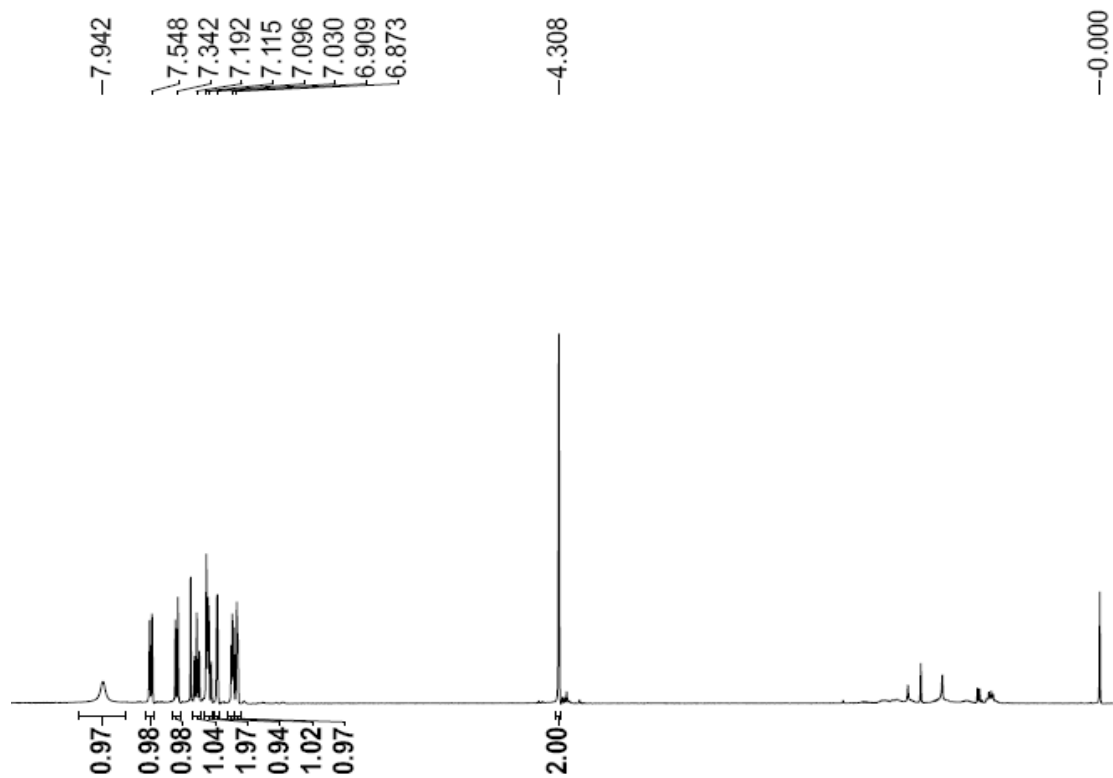


Electronic Supplementary Material (ESI) for RSC Advances  
This journal is © The Royal Society of Chemistry 2012



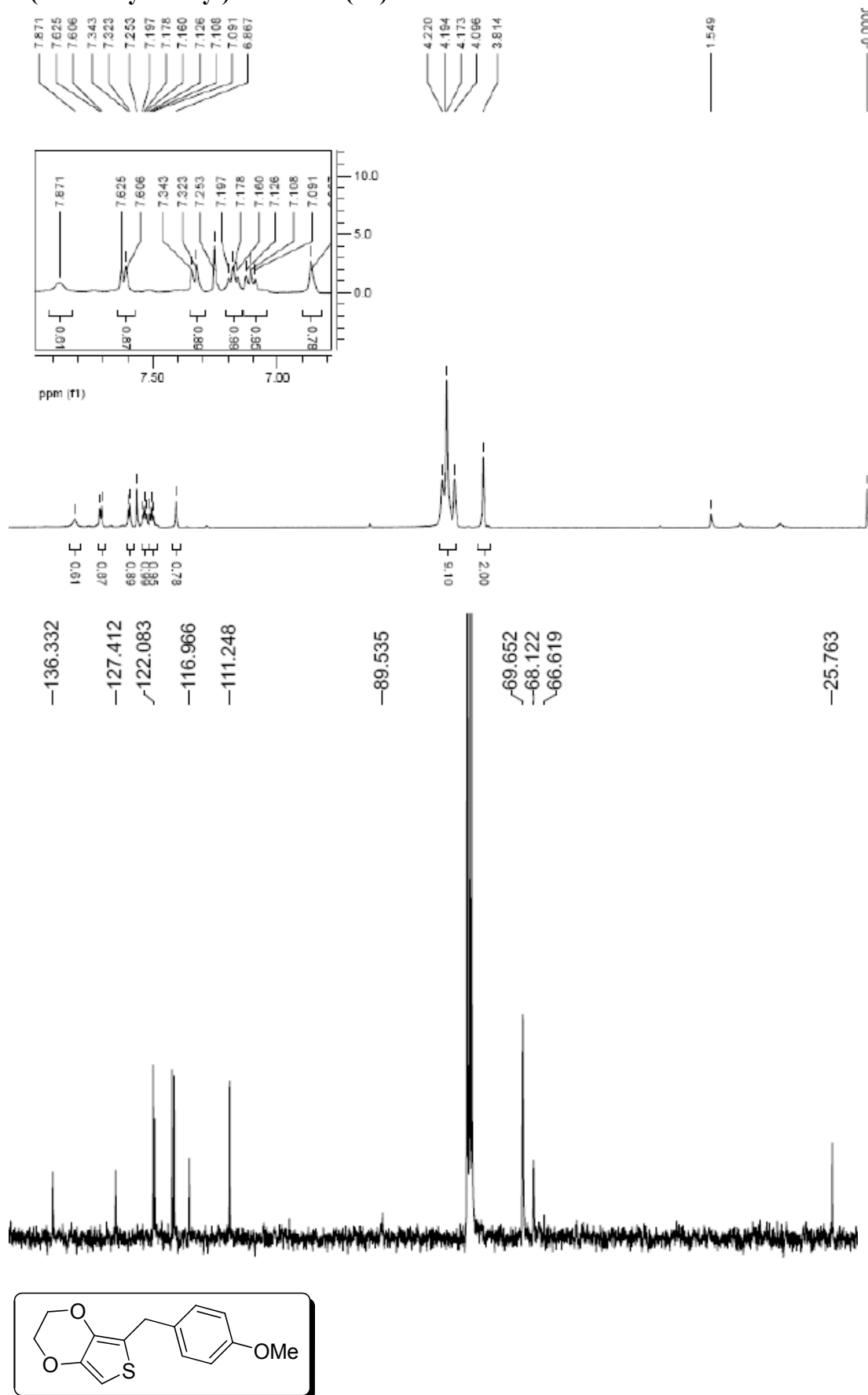
3-(thiophen-2-ylmethyl)-1H-indole (3v)

Electronic Supplementary Material (ESI) for RSC Advances  
This journal is © The Royal Society of Chemistry 2012



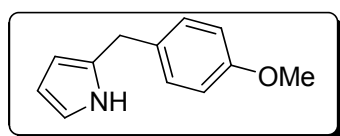
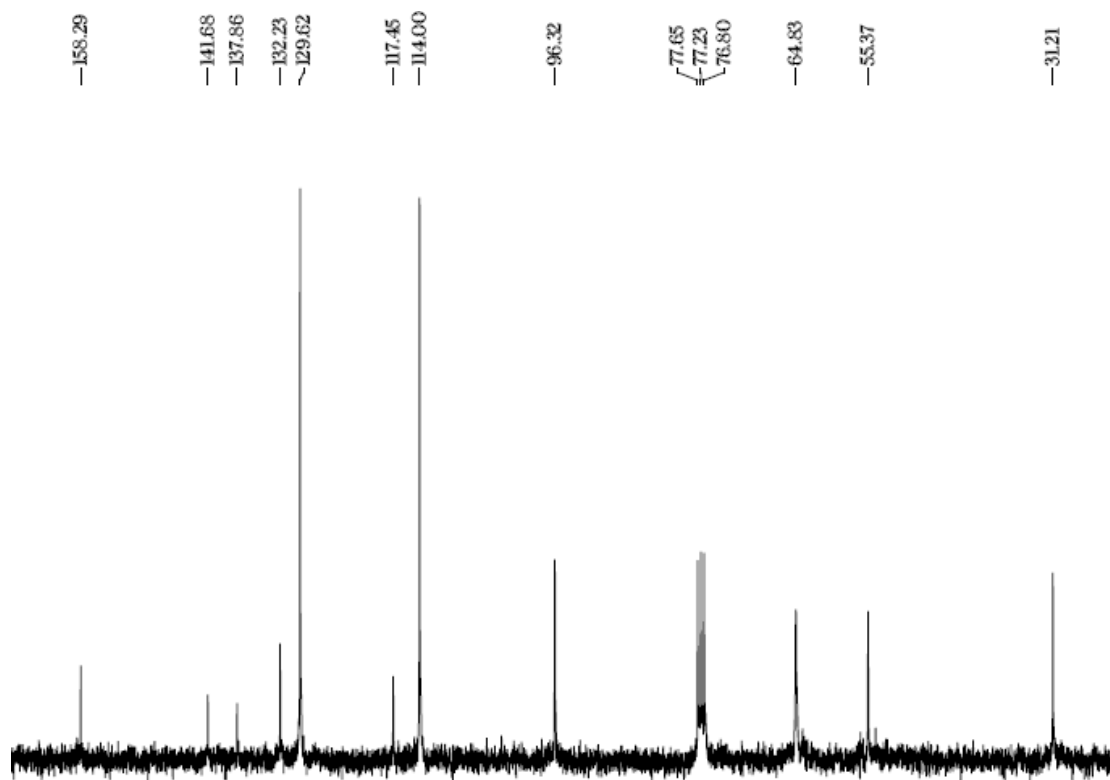
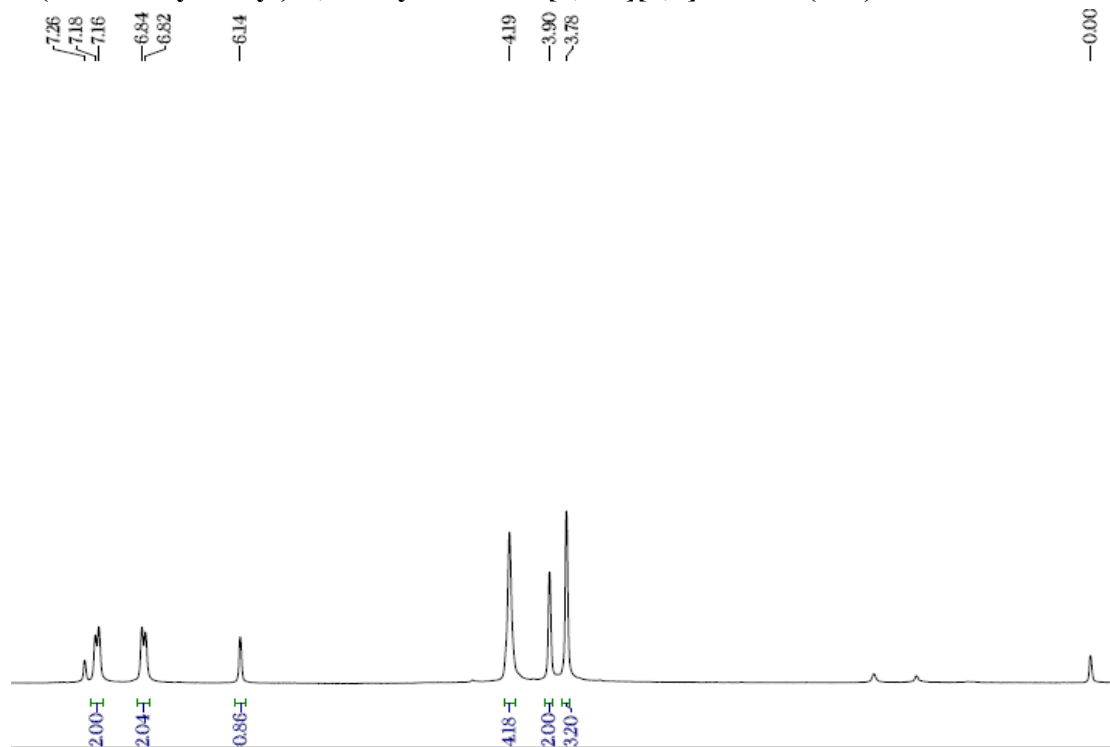
Electronic Supplementary Material (ESI) for RSC Advances  
This journal is © The Royal Society of Chemistry 2012

### 3-(ferrocenylmethyl)-1H-indole(3u)



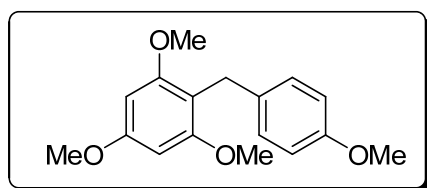
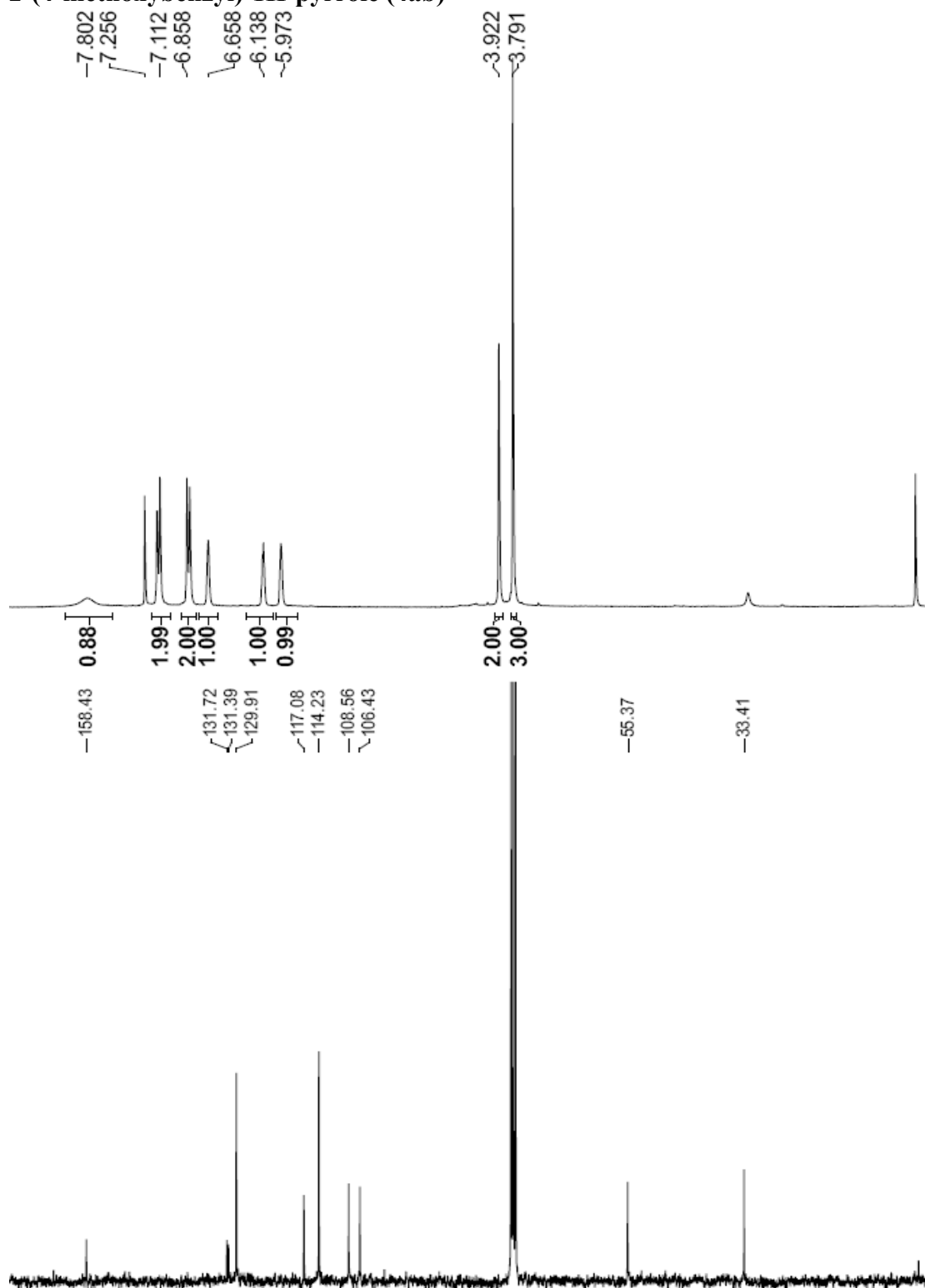
Electronic Supplementary Material (ESI) for RSC Advances  
This journal is © The Royal Society of Chemistry 2012

**5-(4-methoxybenzyl)-2,3-dihydrothieno[3,4-b][1,4]dioxine (4aa)**



Electronic Supplementary Material (ESI) for RSC Advances  
This journal is © The Royal Society of Chemistry 2012

**2-(4-methoxybenzyl)-1H-pyrrole (4ab)**



Electronic Supplementary Material (ESI) for RSC Advances  
This journal is © The Royal Society of Chemistry 2012

**1,3,5-trimethoxy-2-(4-methoxybenzyl)benzene (4ac)**

