

Supporting Information for

Nanoliter-scale, Regenerable Ion Sensor: Sensing with Surface Functionalized Microstructured Optical Fiber

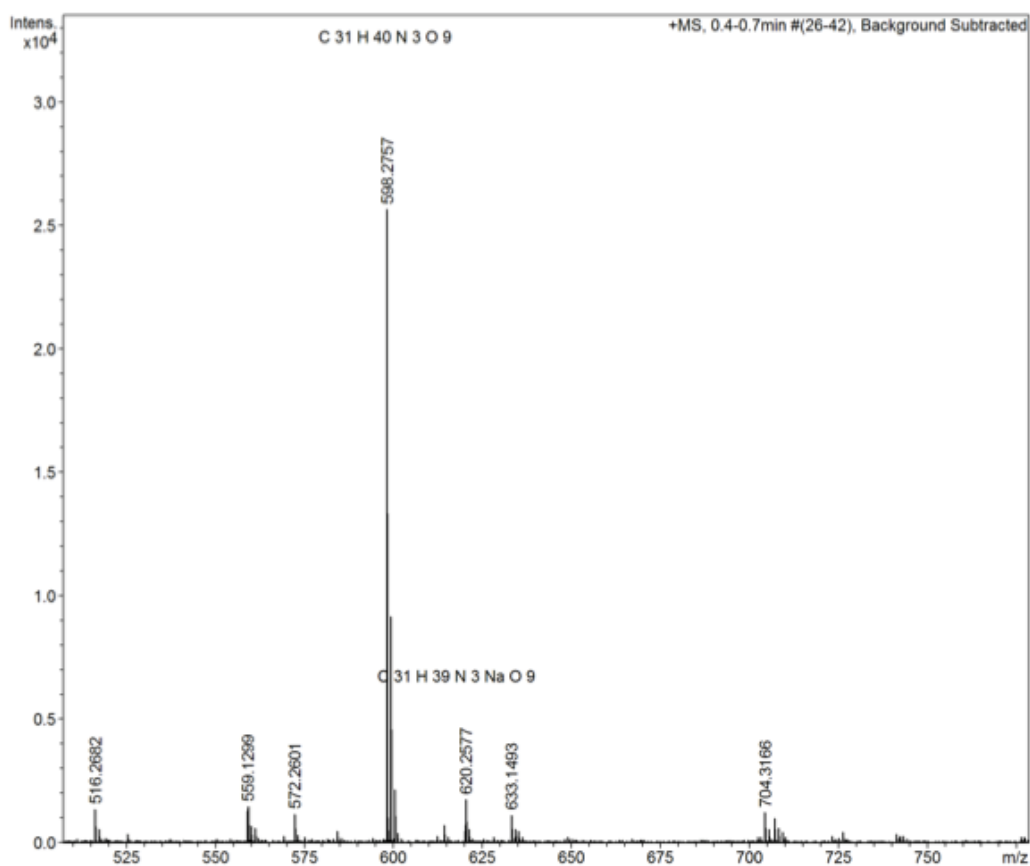
Mass Spectrum SmartFormula Report

Analysis Info

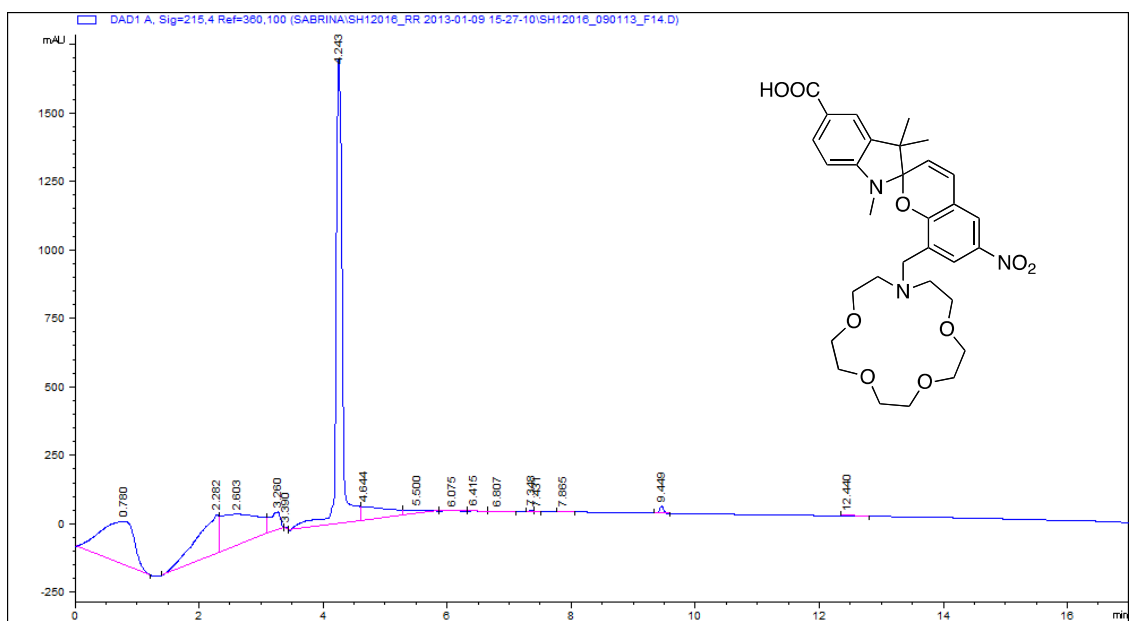
Analysis Name D:\Data\STUDENT DATA\EXTERNAL\ABELL\ABELL_14112012_SH12016_3732.d
Method pos_tune_wide_lc_mp.m Acquisition Date 11/14/2012 10:47:56 AM
Sample Name SH12016 Instrument / Ser# maXis 10152
Comment

Acquisition Parameter

Source Type	ESI	Ion Polarity	Positive	Set Nebulizer	1.0 Bar
Focus	Not active	Set Capillary	4000 V	Set Dry Heater	200 °C
Scan Begin	300 m/z	Set End Plate Offset	-500 V	Set Dry Gas	8.0 l/min
Scan End	2900 m/z	Set Collision Cell RF	3000.0 Vpp	Set Divert Valve	Waste



Analytical HPLC Results:



Column: Agilent Eclipse plus C18, 5 μ m, 4.6 x 260 mm

Conditions: 20-100% Acetonitrile over 20 min.