

Supporting Information

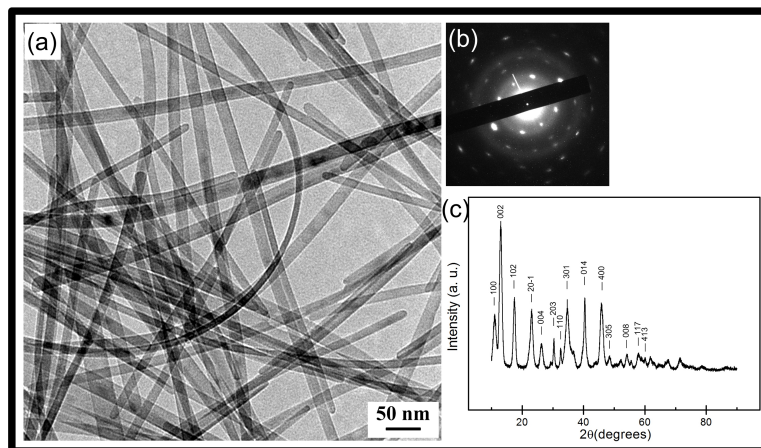


Figure S1. (a) large-area TEM image; (b) SAED pattern, and (c) XRD pattern of Ni(OH)₂ nanowire.

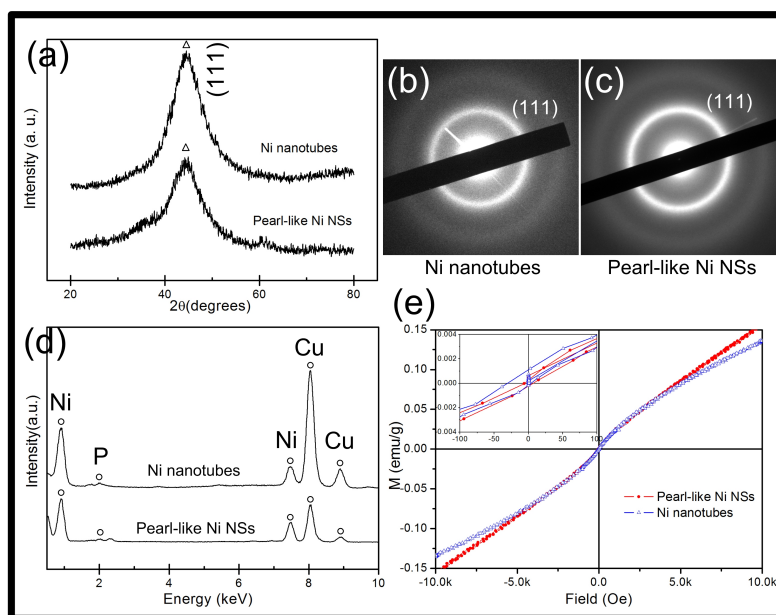


Figure S2. (a) XRD patterns, (b) and (c) SAED patterns, and (d) EDS patterns for Ni NTs and pearl-like Ni NSs synthesized by autocatalytic-assembled on the Ni(OH)₂ nanowires; (e) hysteresis loop at 300K for Ni NTs and pearl-like Ni NSs.

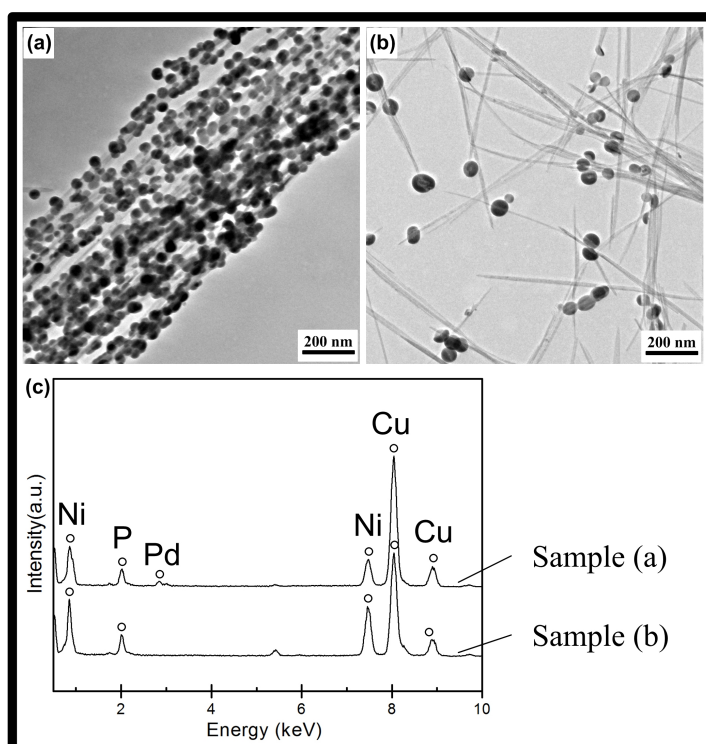


Figure S3. TEM image of the samples collected only after the reaction started for 5 min with different concentration of the PdCl_2 solution (a) at 1.69 m mol/L and (b) at 0.62 m mol/L; (c) EDS pattern of the samples in (a) and (b).