

Supporting information

Table S1. Surface area, pore size, and pore volume of MA

Surface area (m ² /g)	Pore diameter (nm)	Pore volume (cm ³ /g)
209	4	0.24

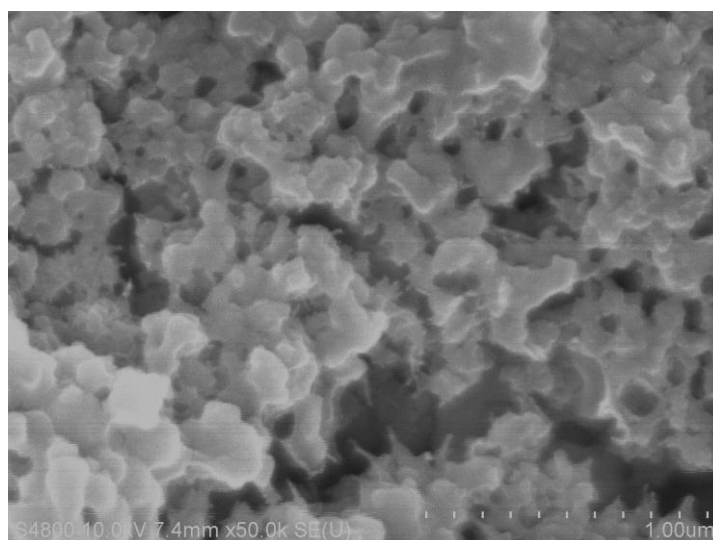


Fig. S1 SEM images of Alum

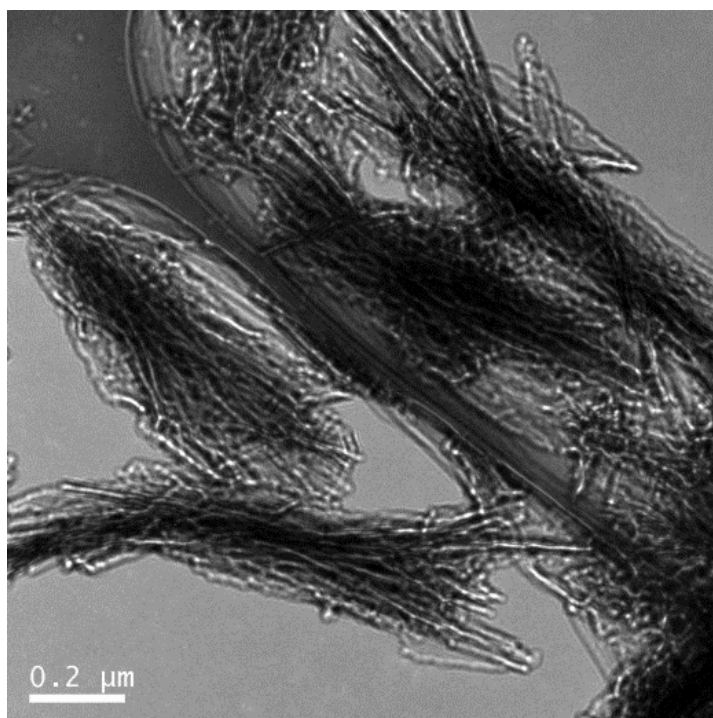


Fig. S2 TEM images of MA

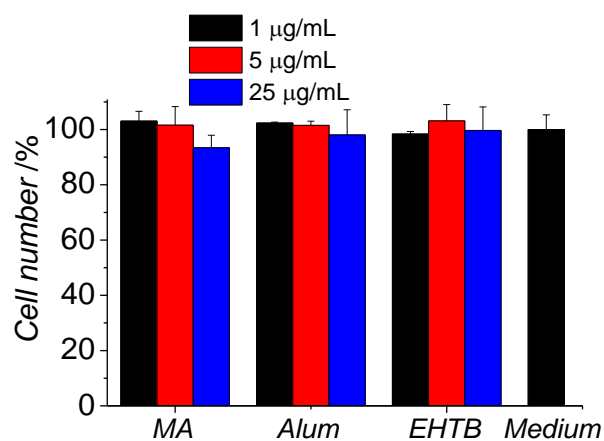


Fig. S3 Viability of the cells

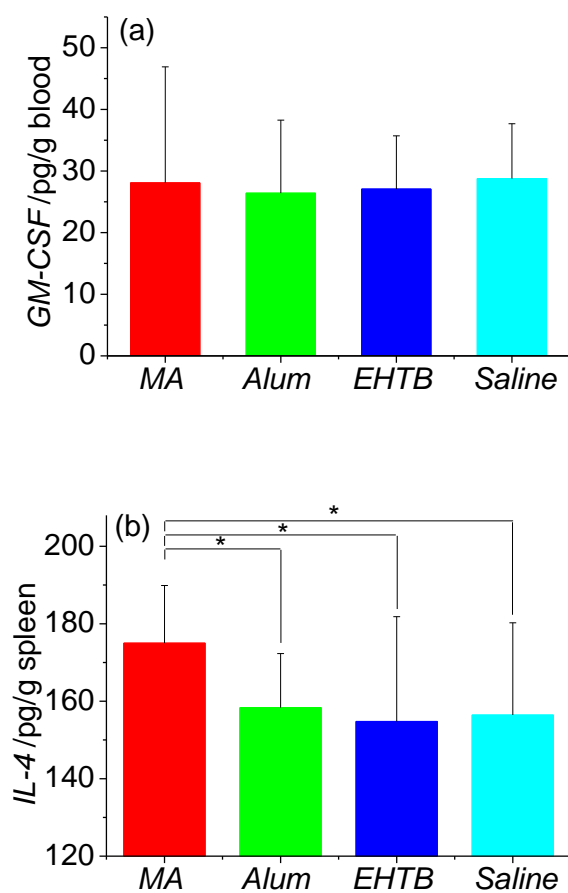


Figure S4. Content of GM-CSF in blood (a) and IL-4 in spleen of mice (b) after subcutaneous injection of different adjuvants (*, $p < 0.05$).