

Supporting Information

Total synthesis of 5-*epi*-torrubiellutin C and its biological evaluation

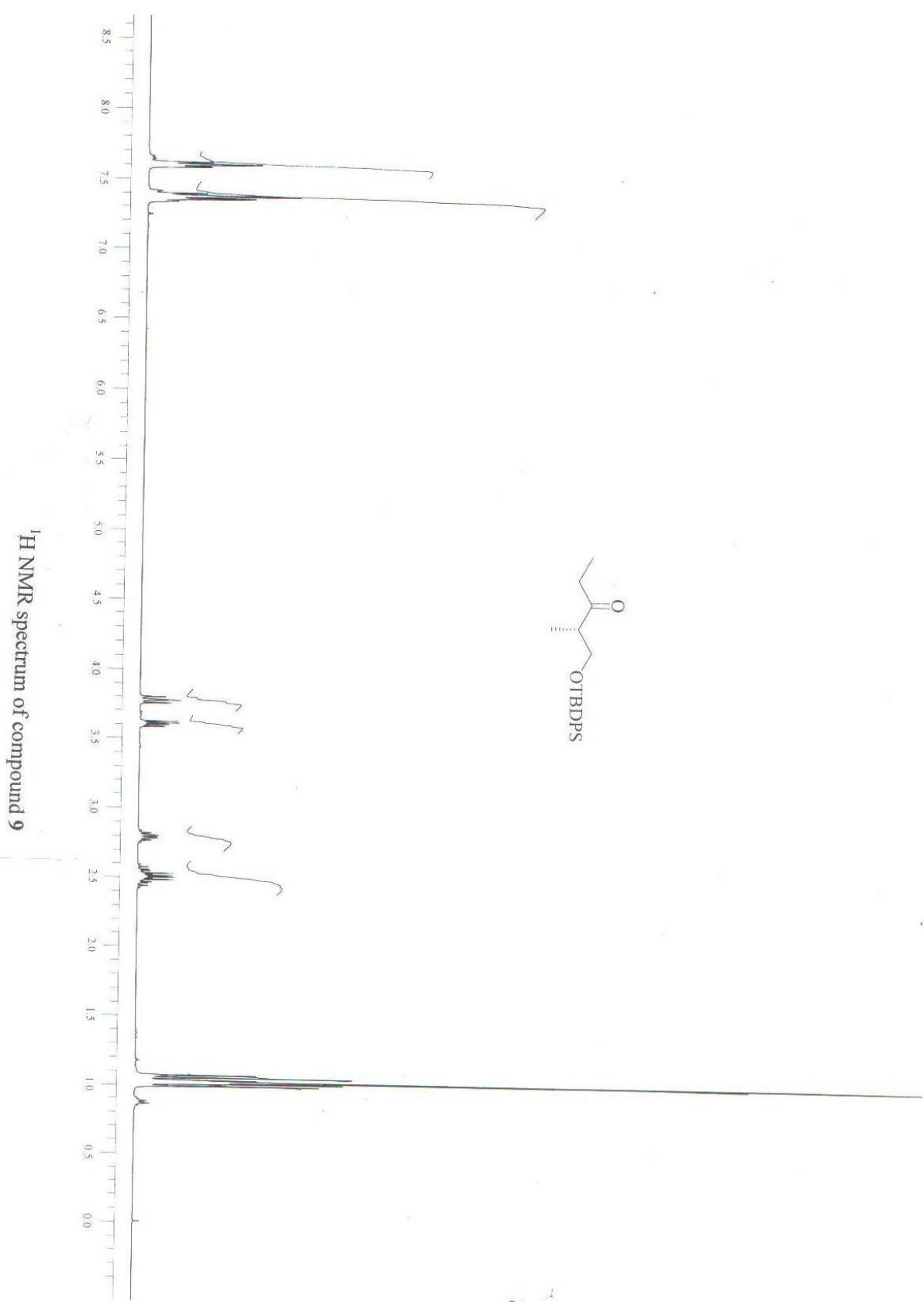
Bodugam Mahipal,^[a] Ashita Singh,^[b] Ramesh Ummanni,*^[b] Srivari Chandrasekhar*^[a]

^a*Division of Natural Product Chemistry, ^bCenter for Chemical Biology, Indian Institute of Chemical Technology, Uppal Road, Tarnaka, Hyderabad, 500007, India.*

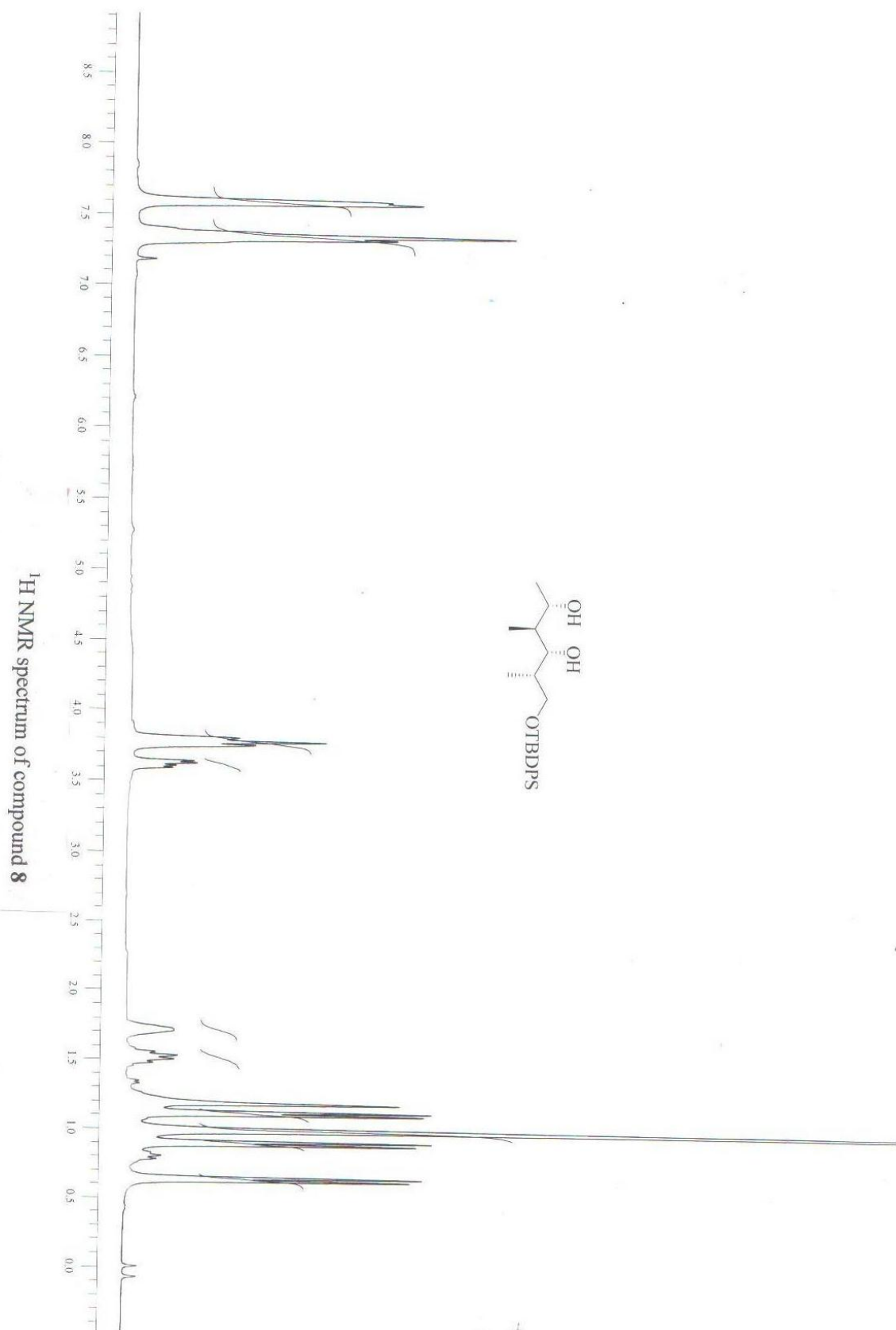
E-mail: srivaric@iict.res.in Fax: (+)91 40 27160512.

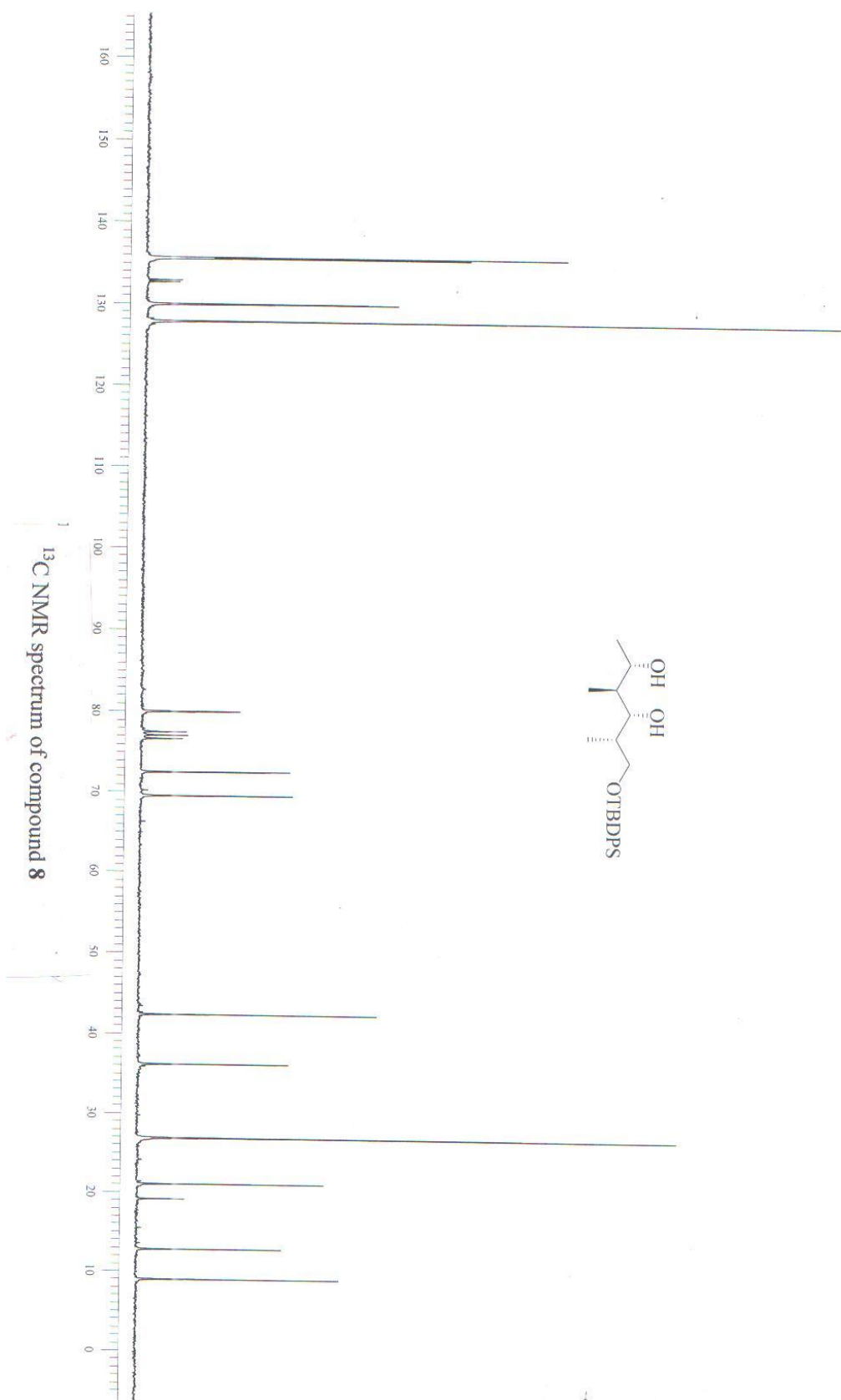
Table of contents

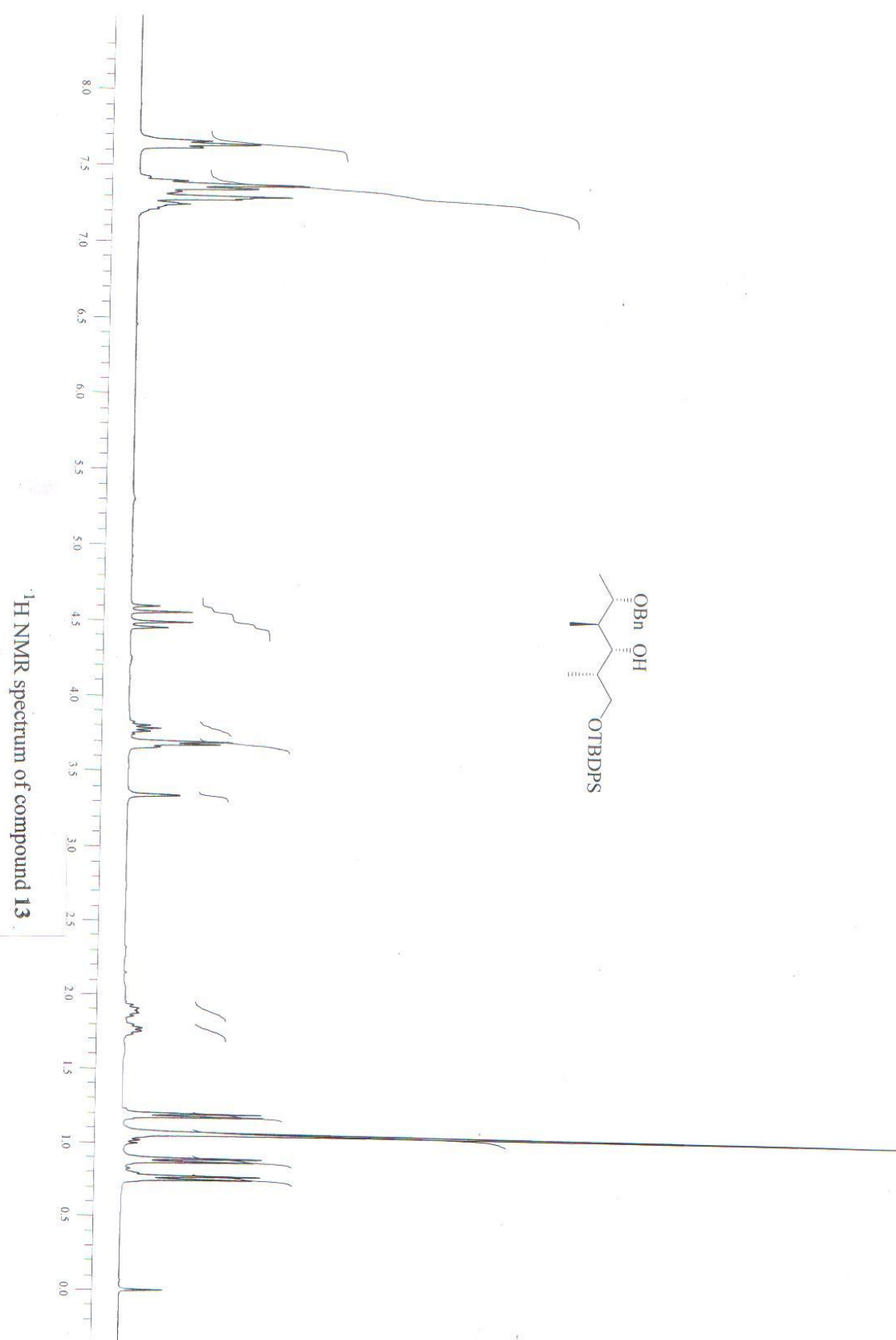
Copies of ¹ H and ¹³ C-NMR Spectra	-----	02-39
--	-------	-------



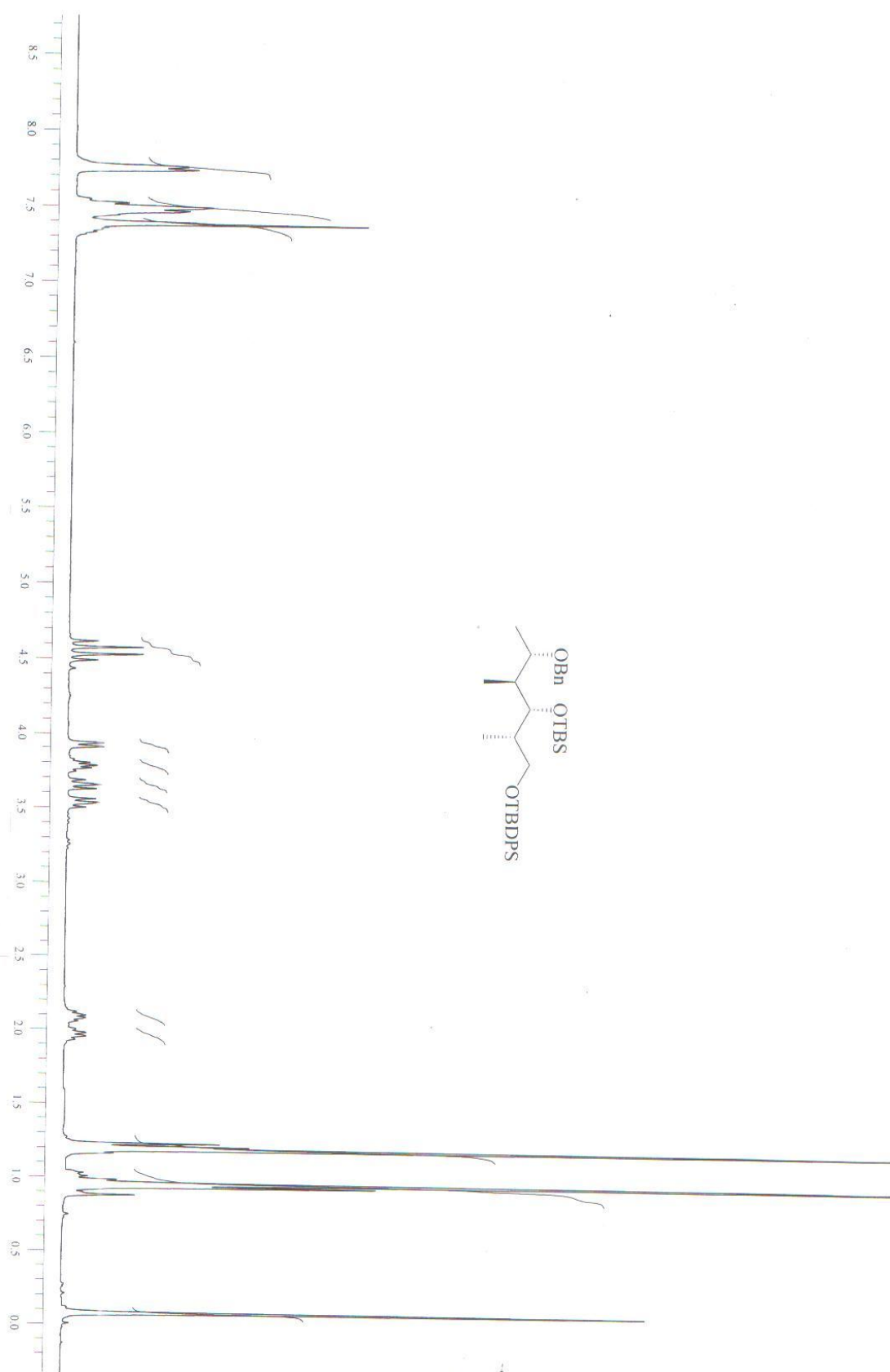


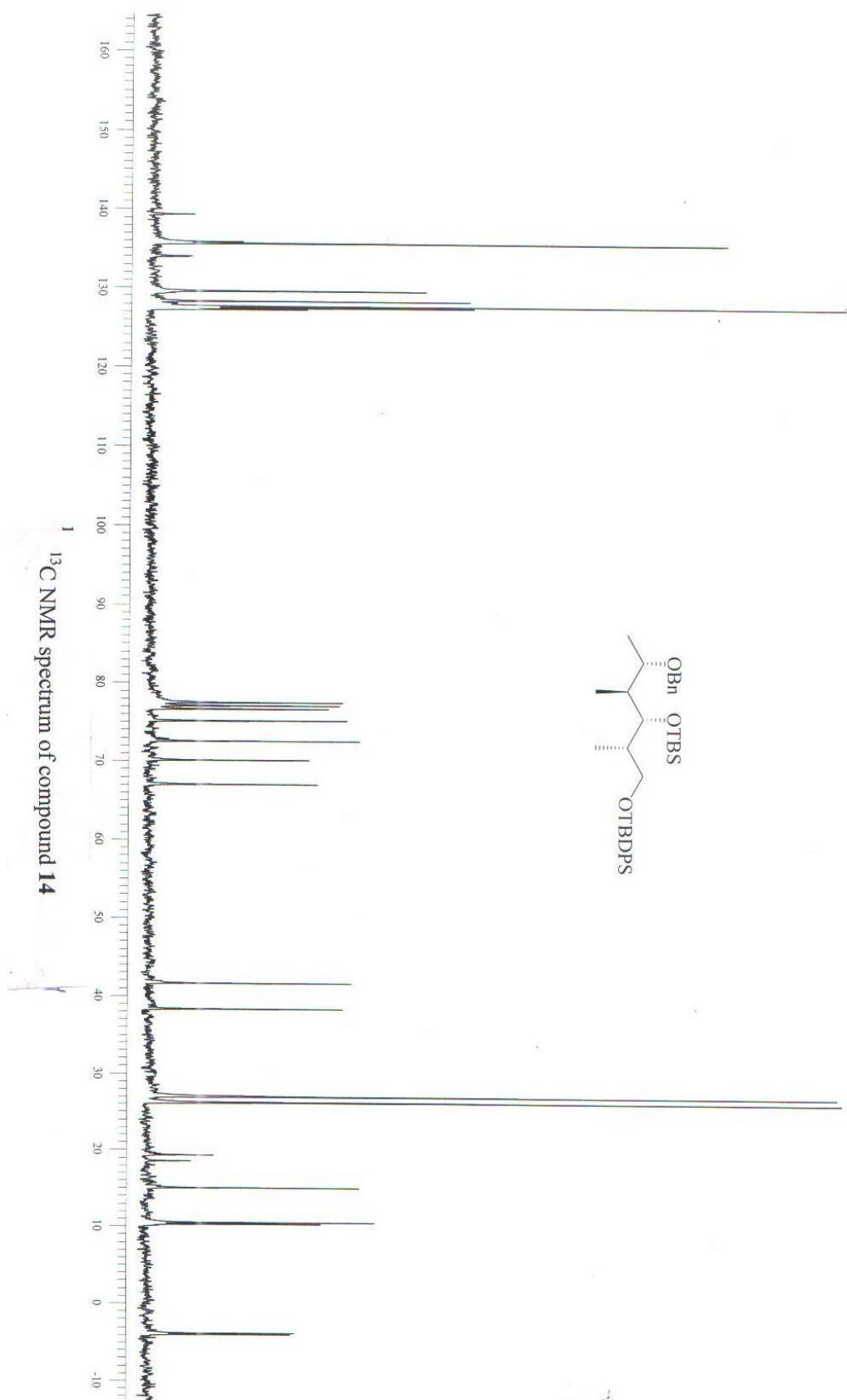


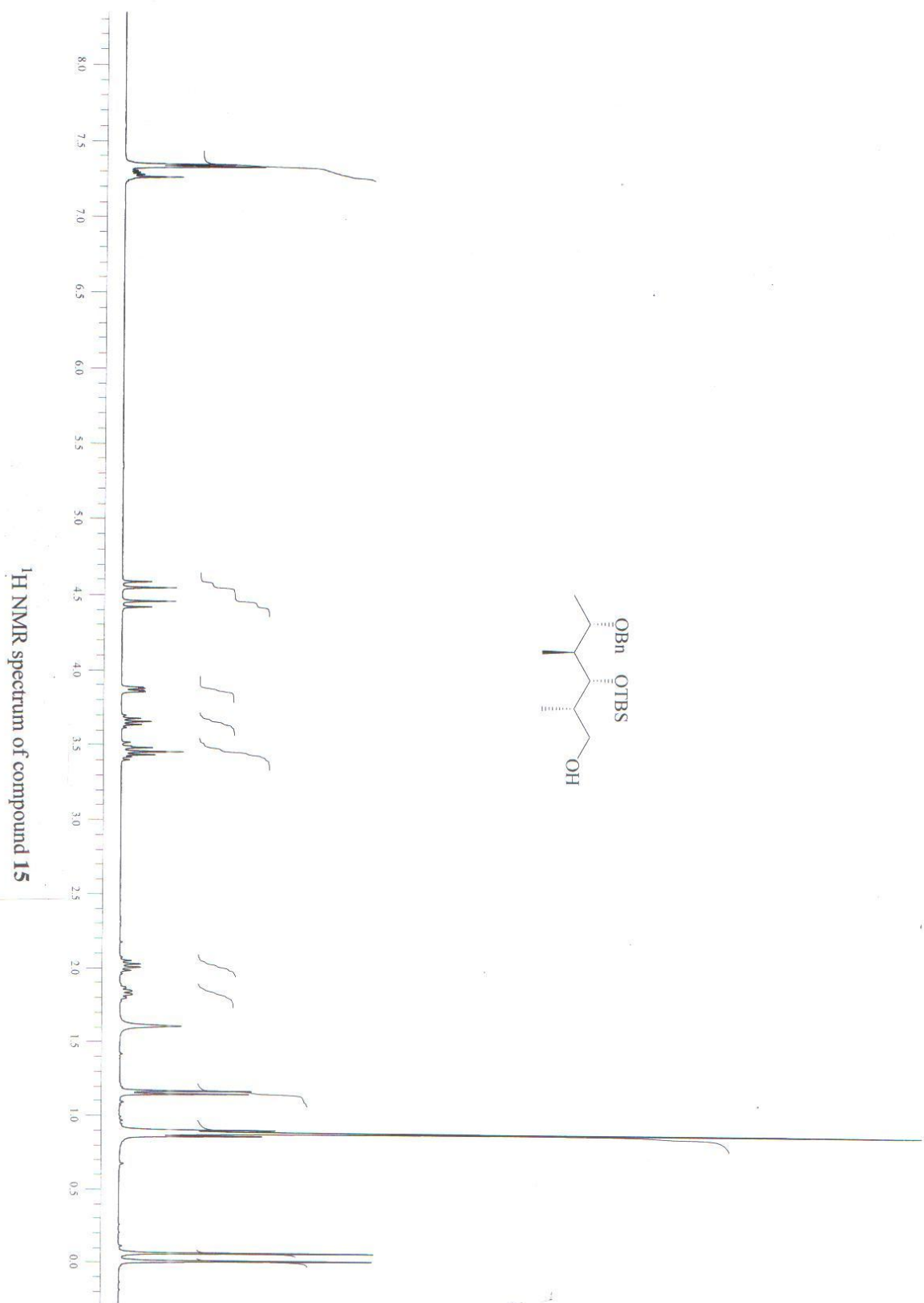




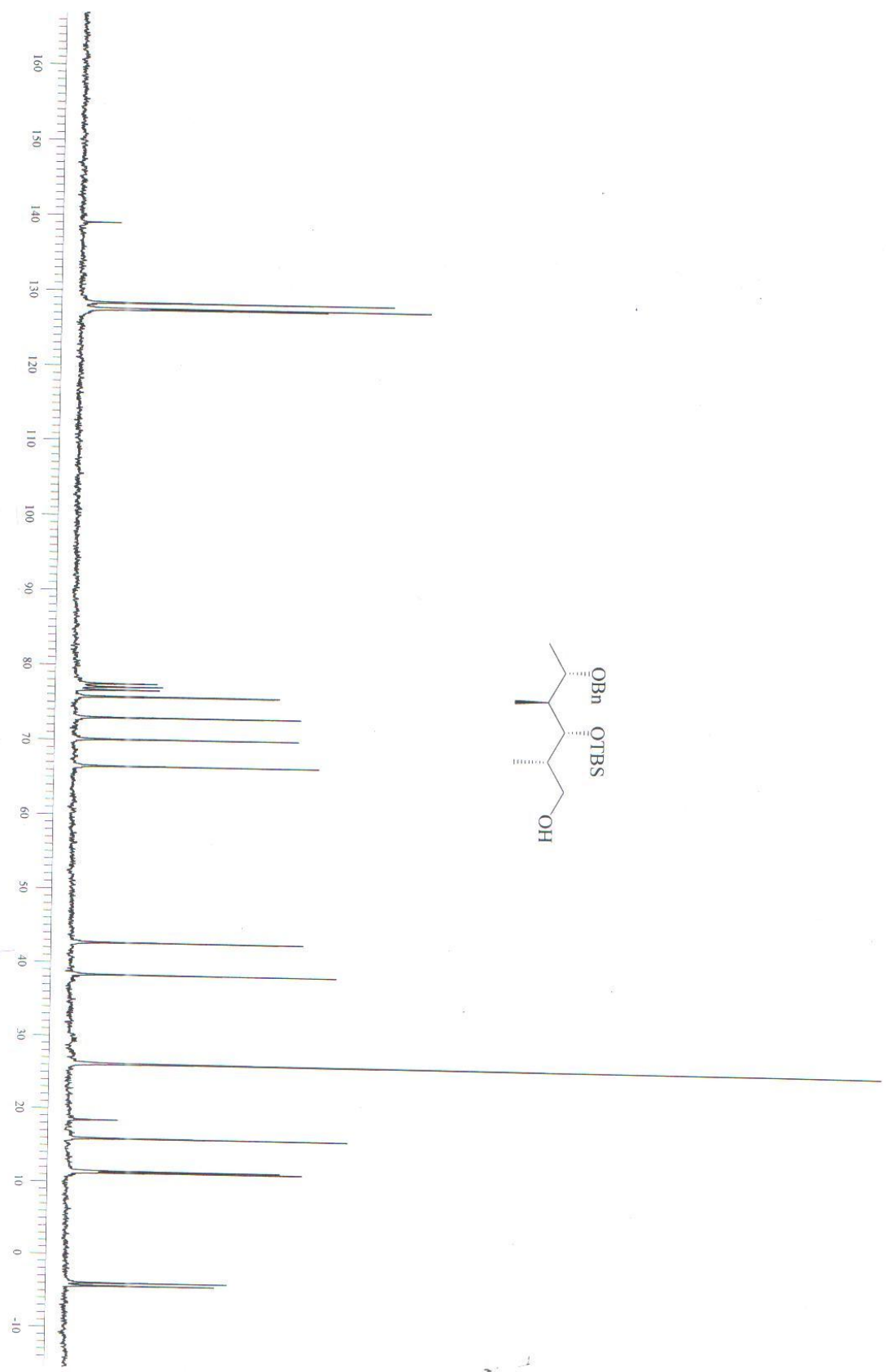


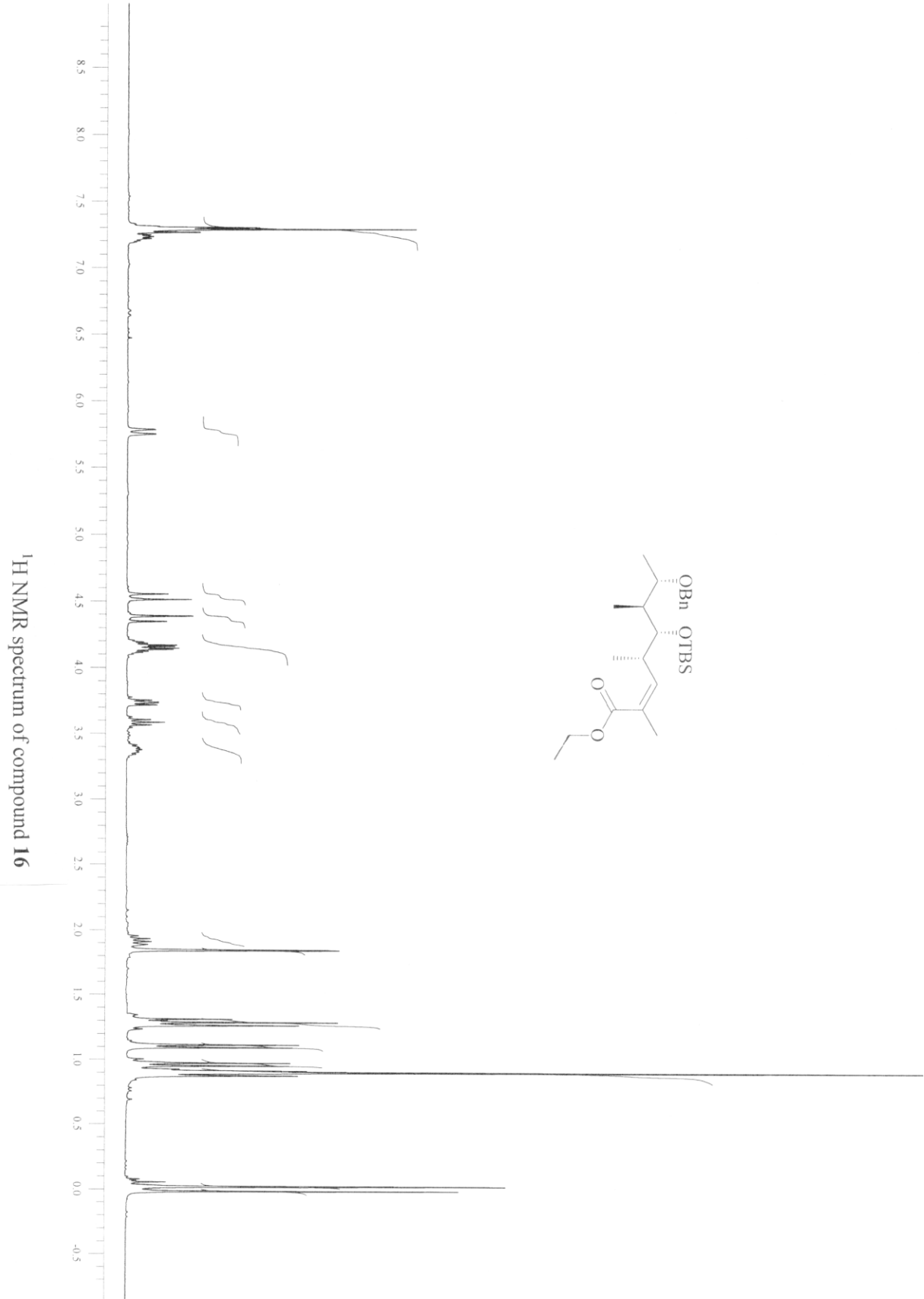


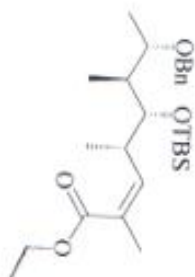


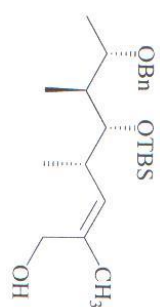


¹³C NMR spectrum of compound **15**

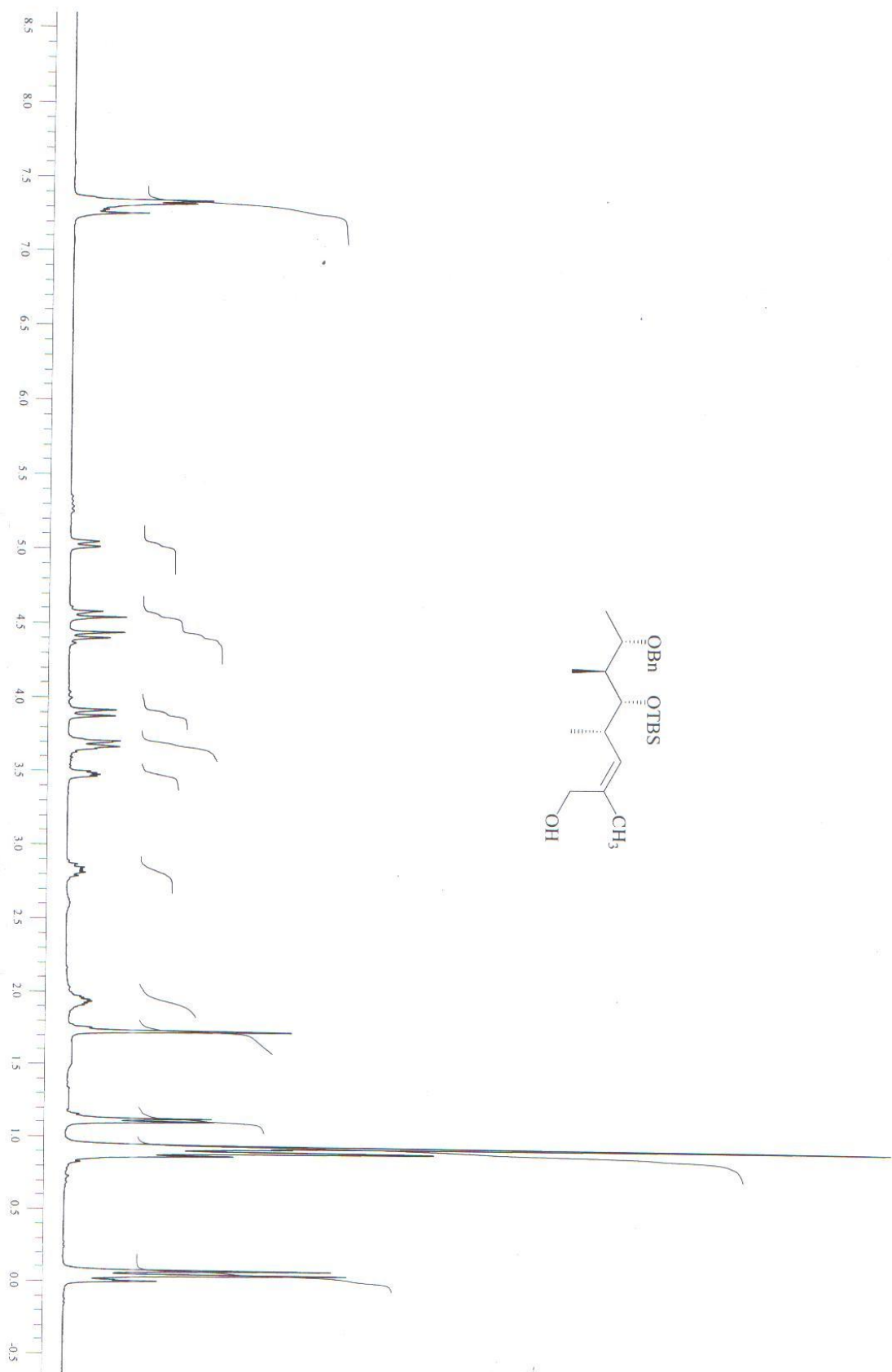


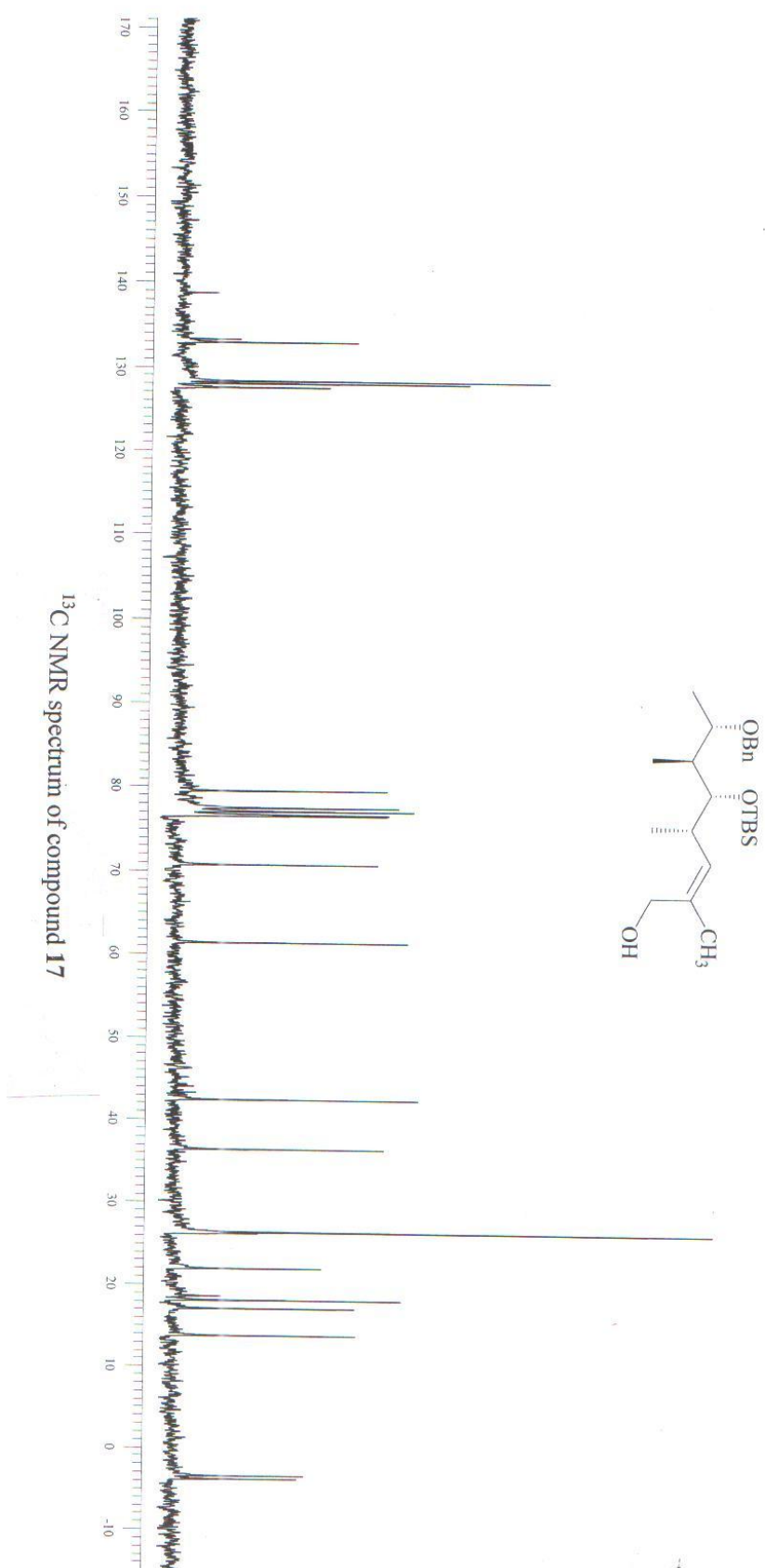


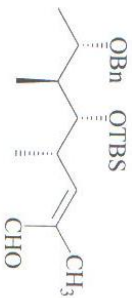




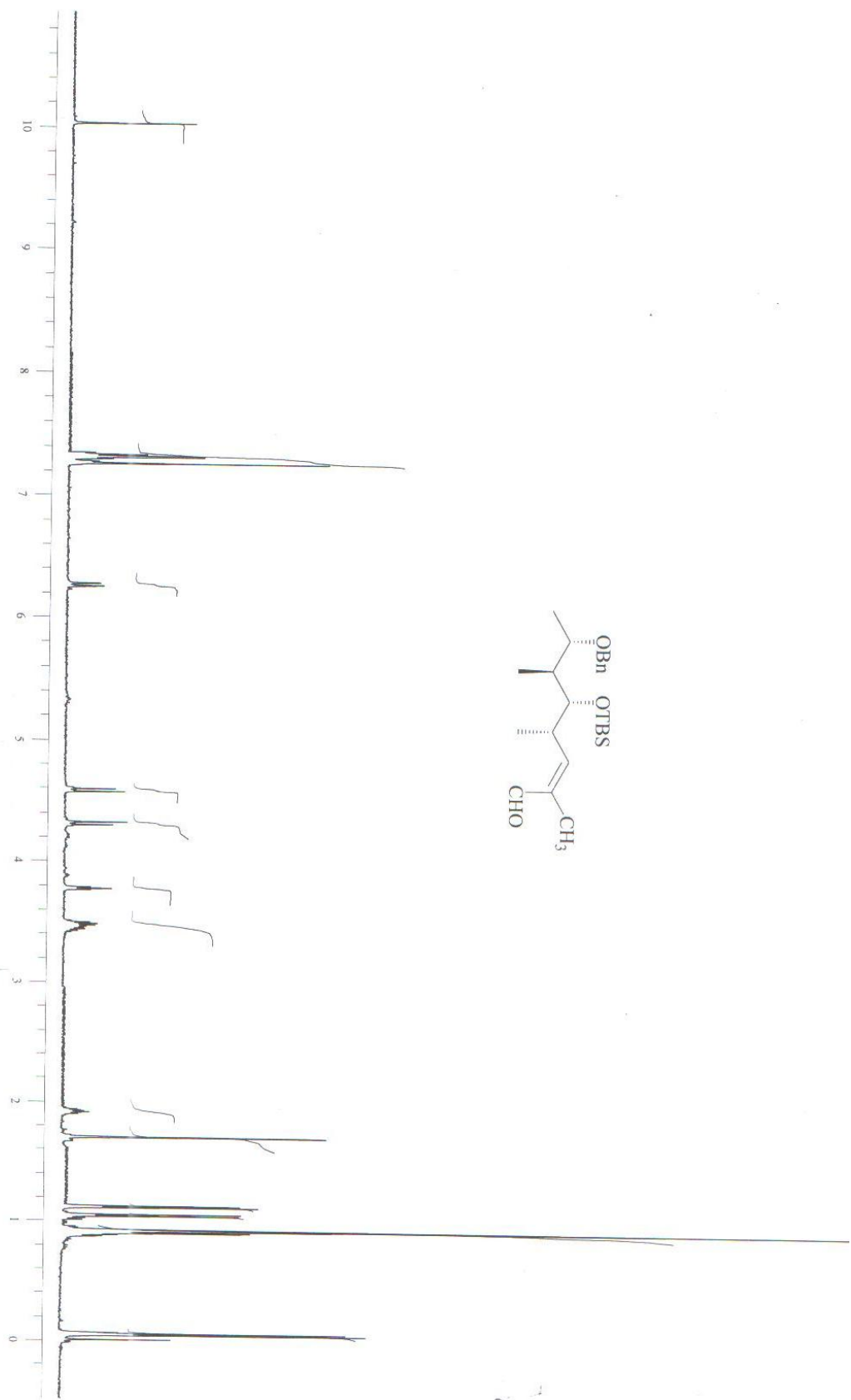
¹H NMR spectrum of compound **17**

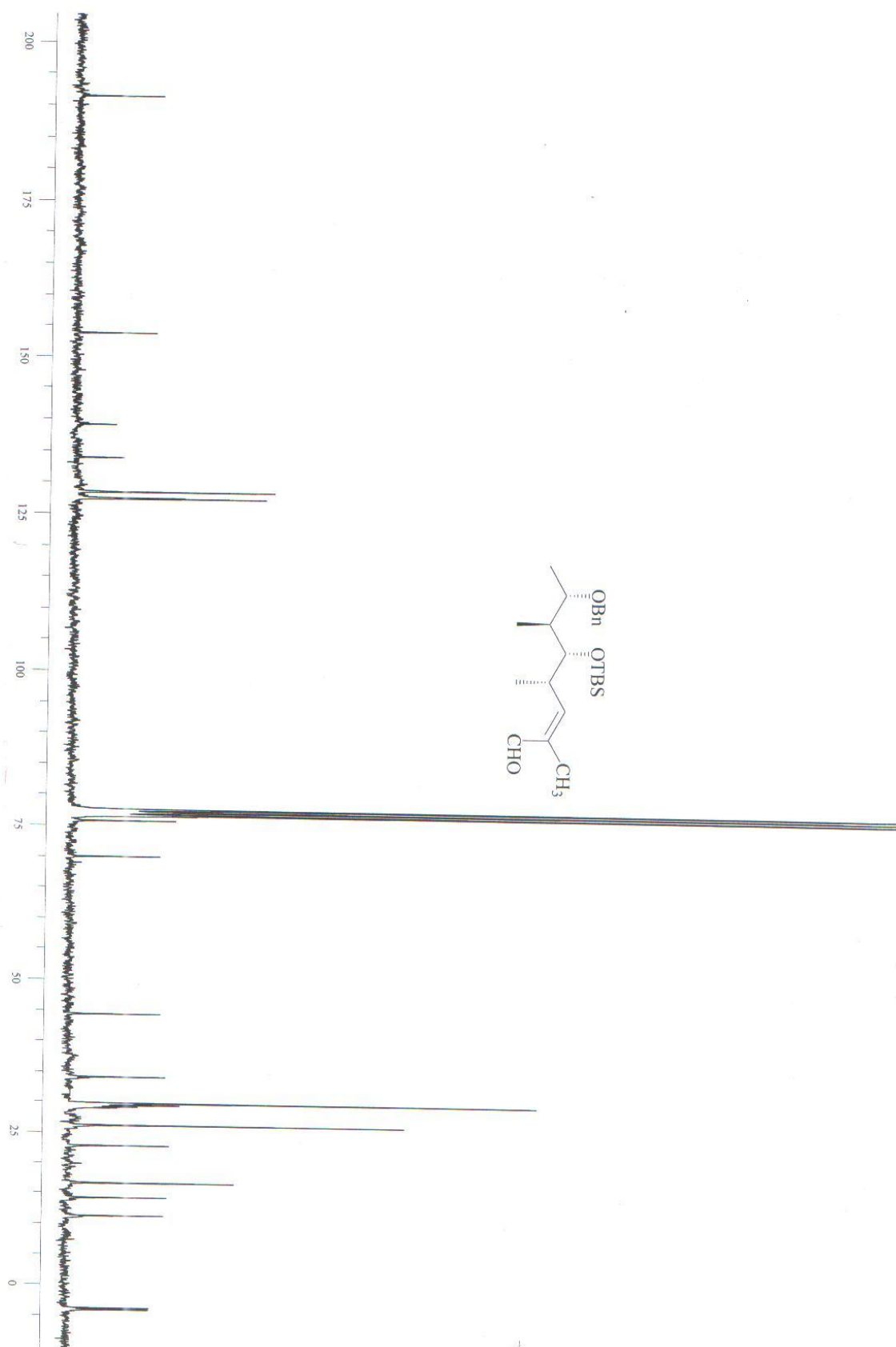


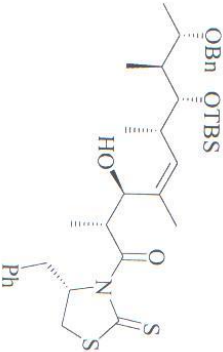




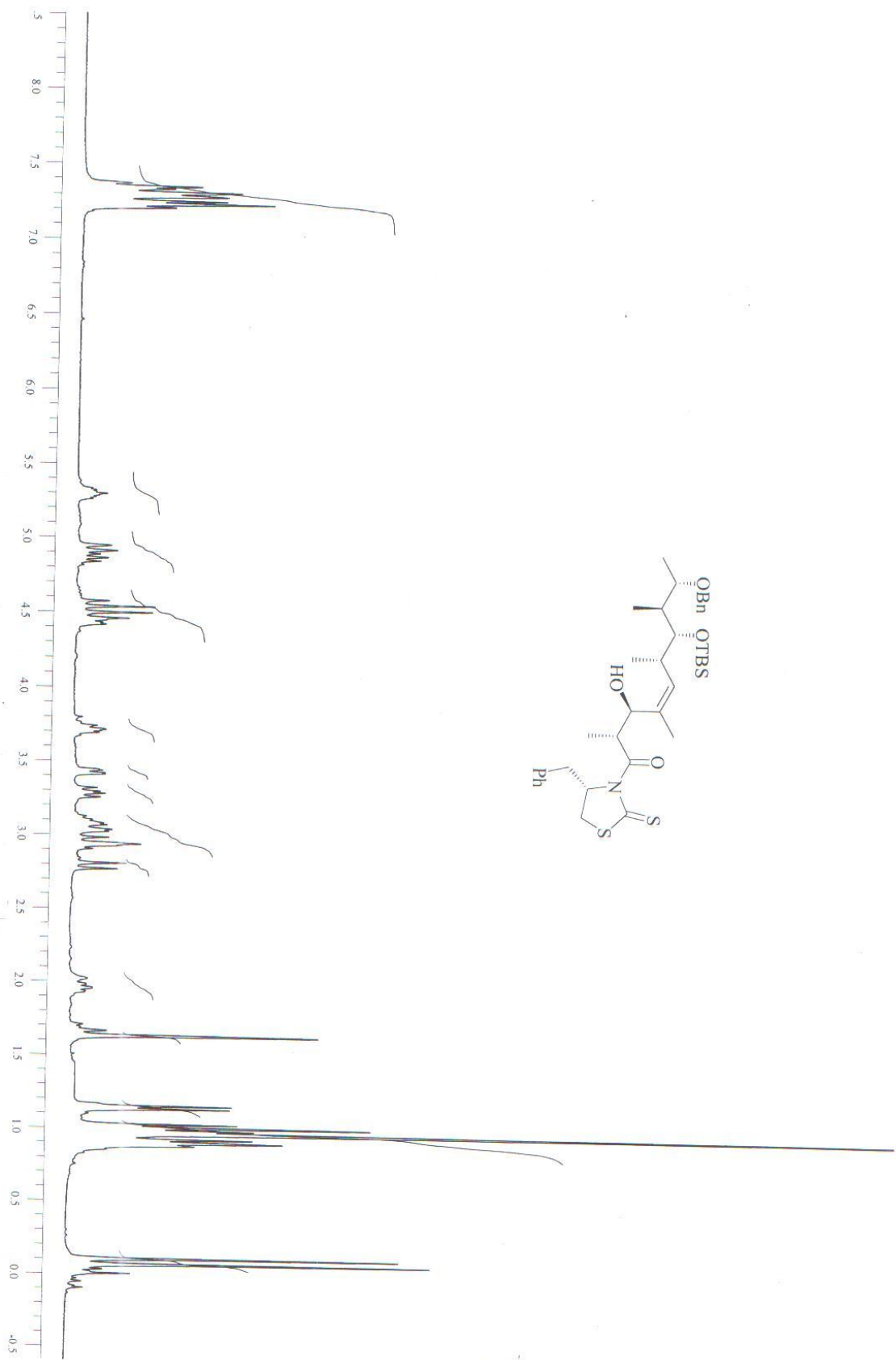
¹H NMR spectrum of compound 7

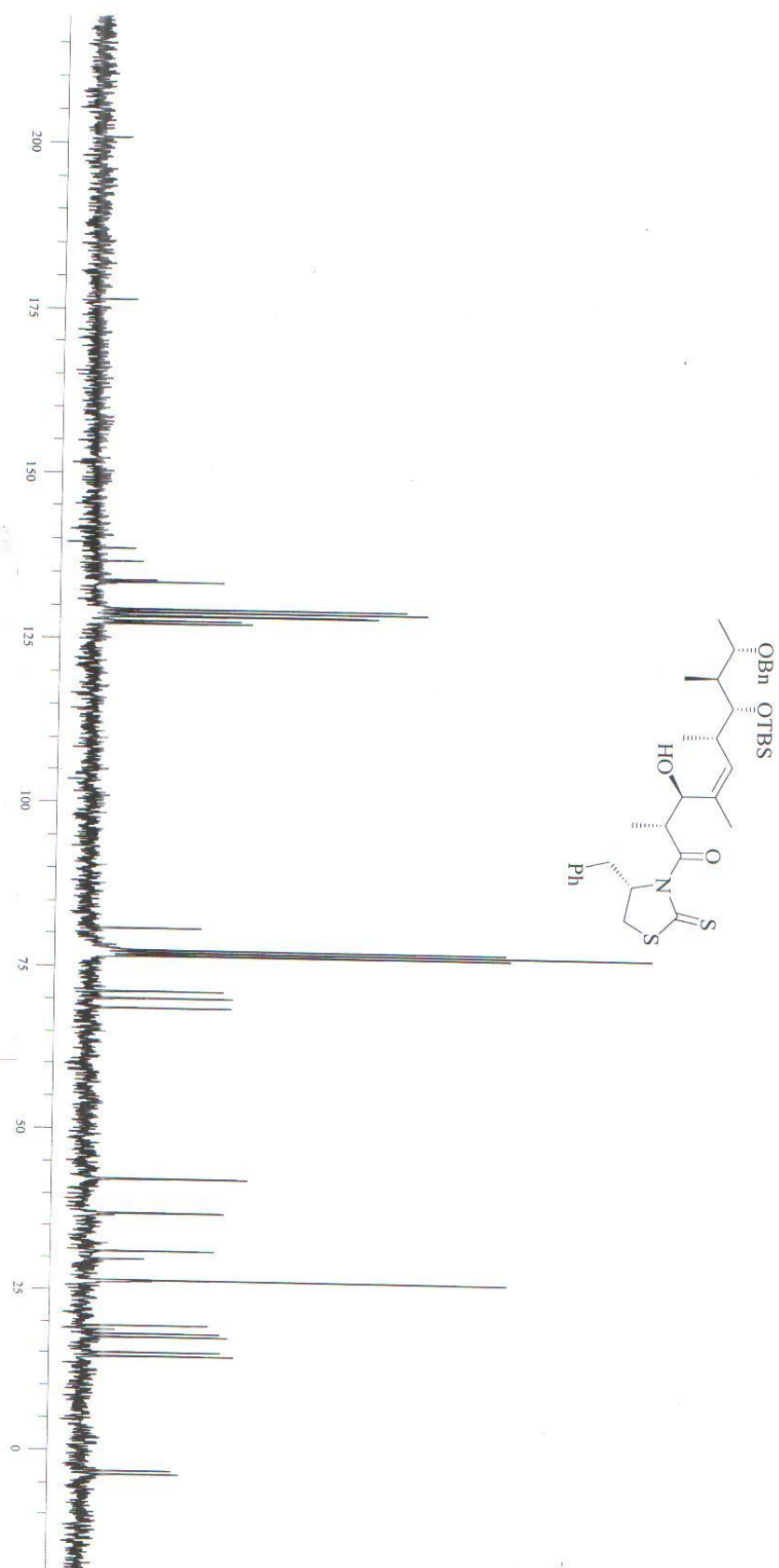


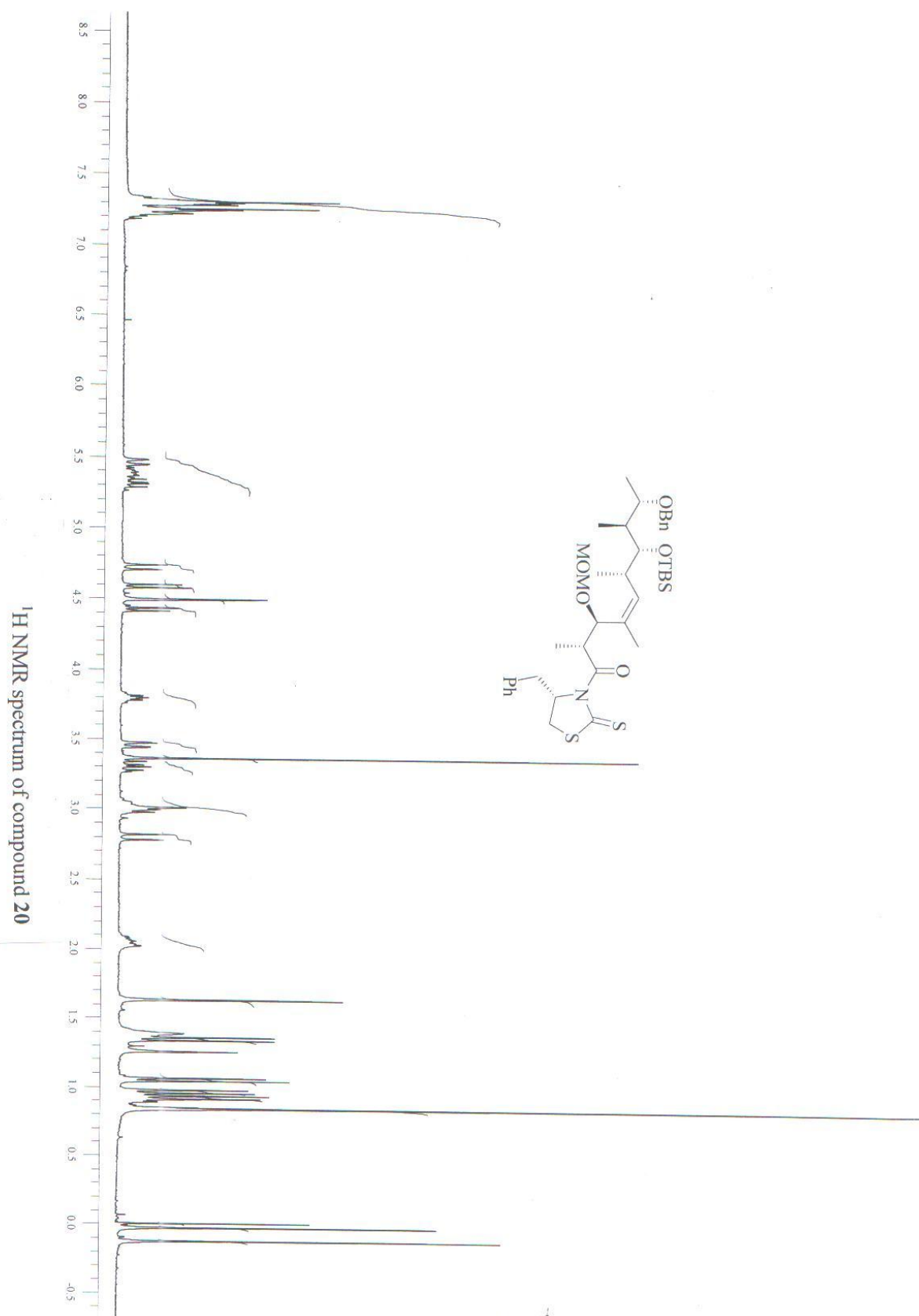


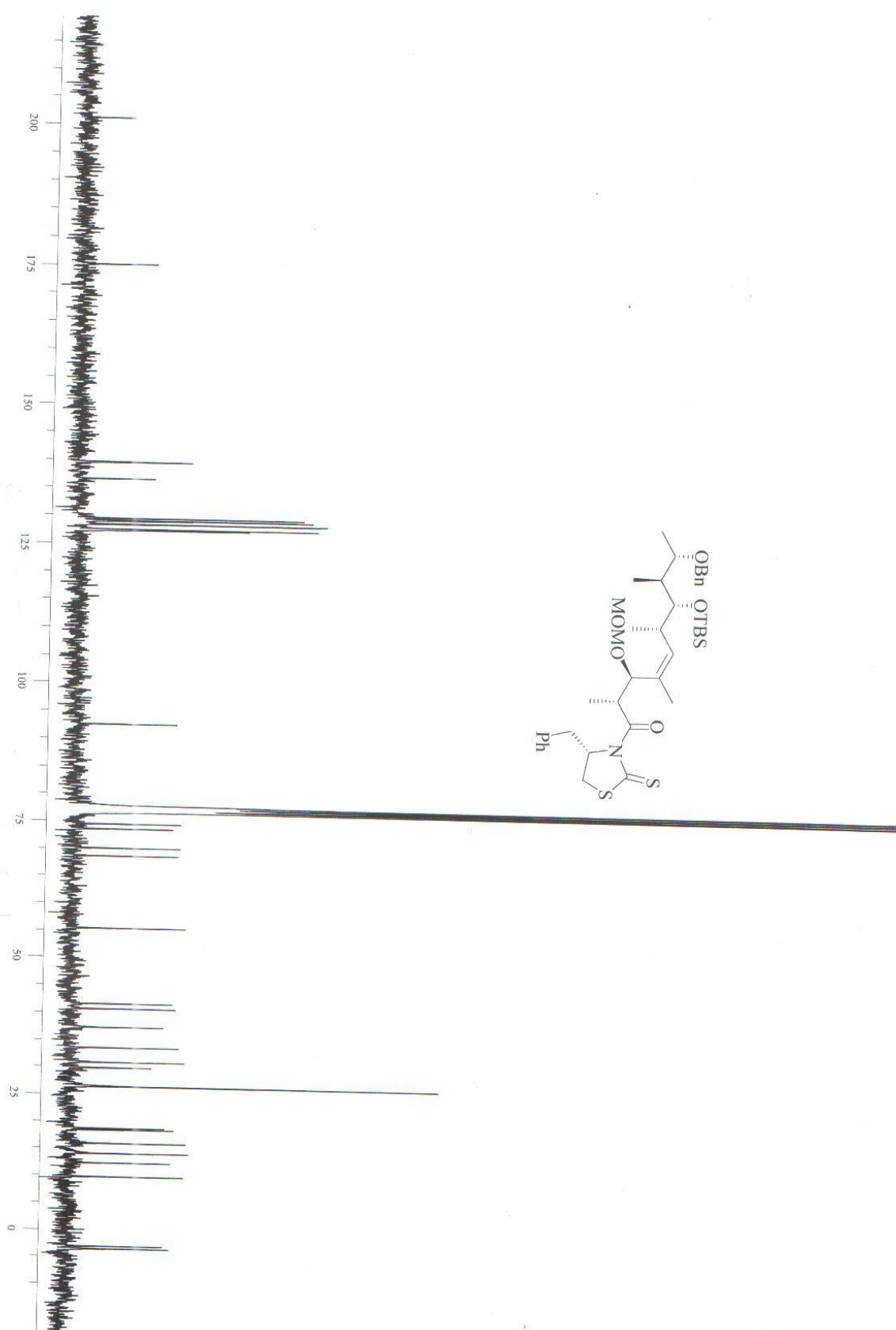


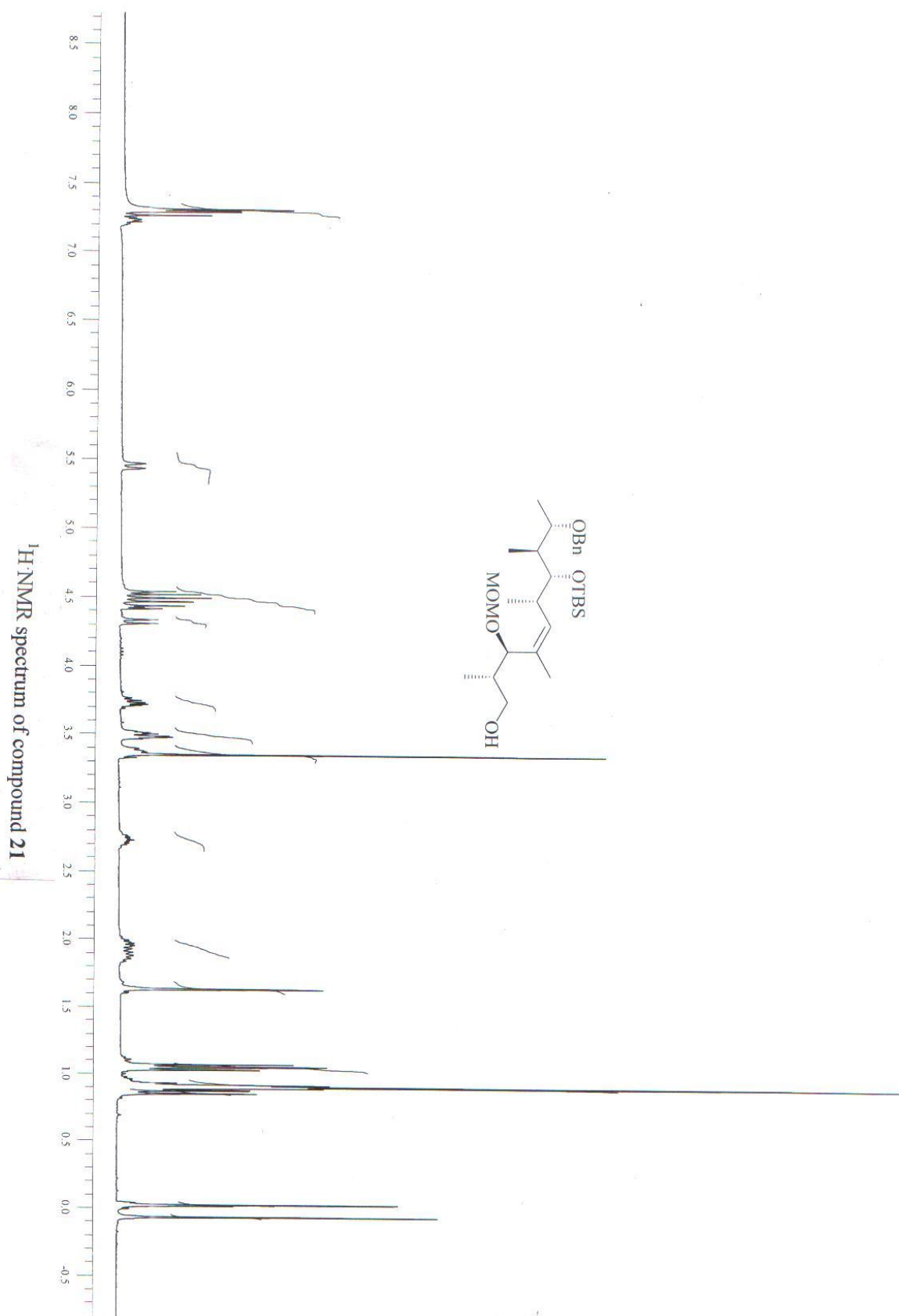
¹H NMR spectrum of compound 19e

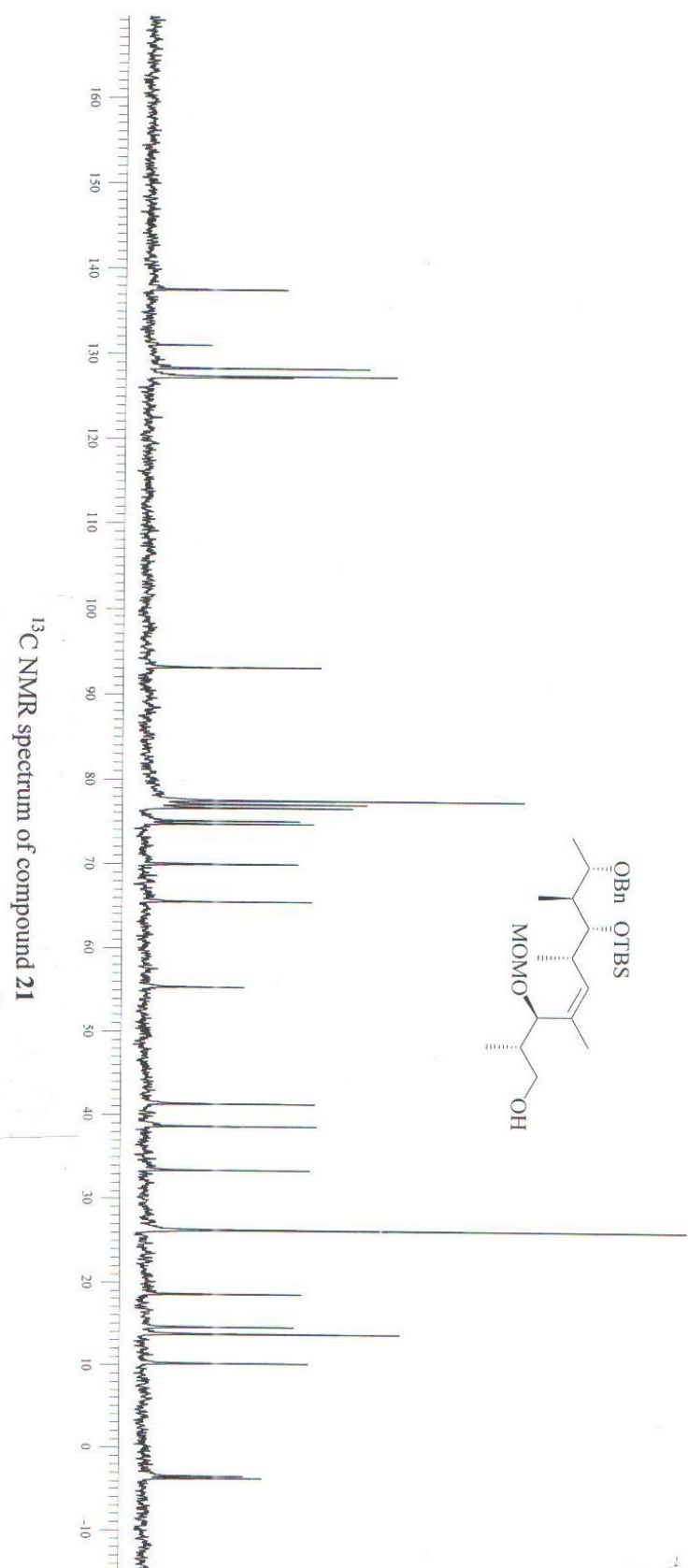


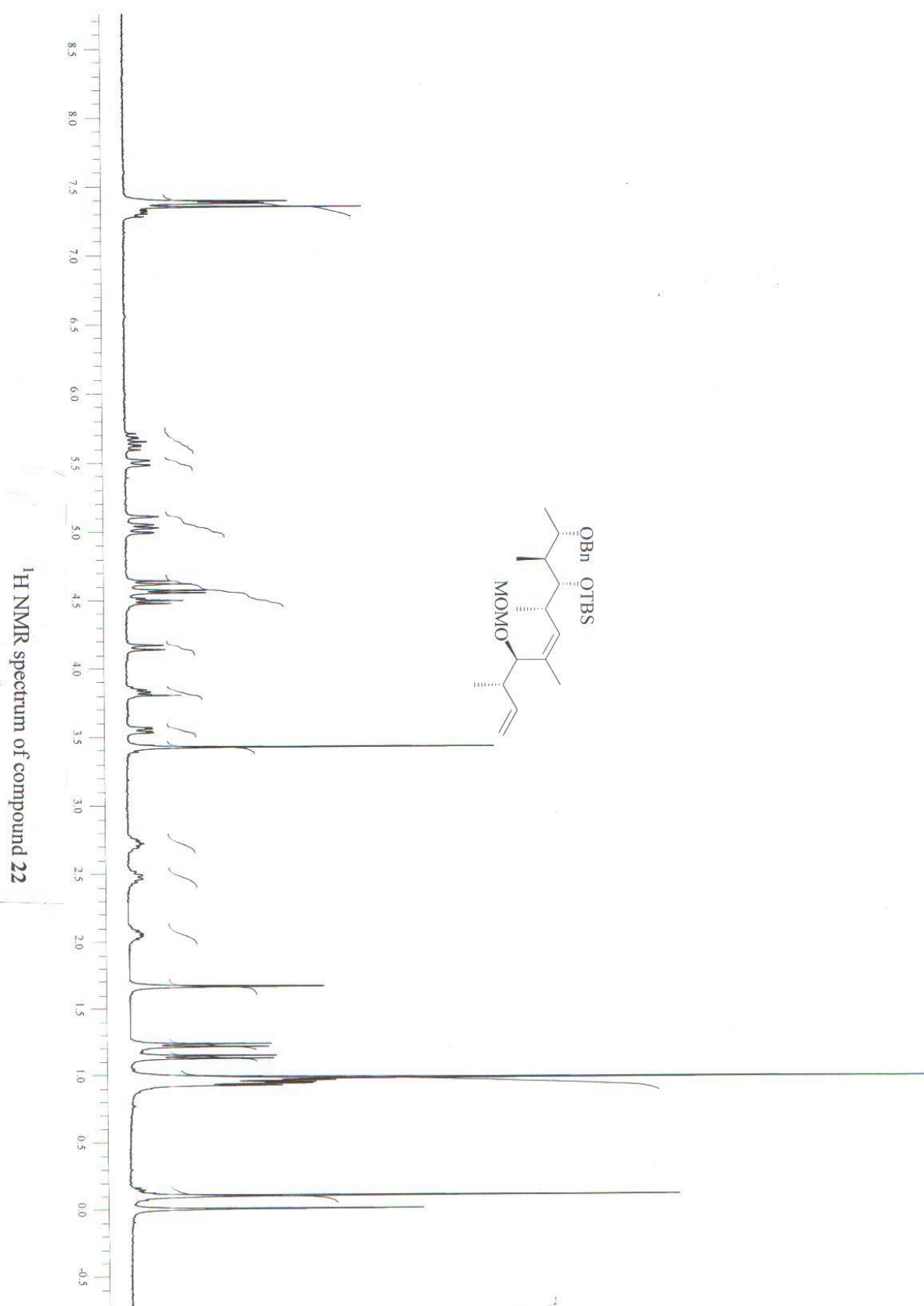


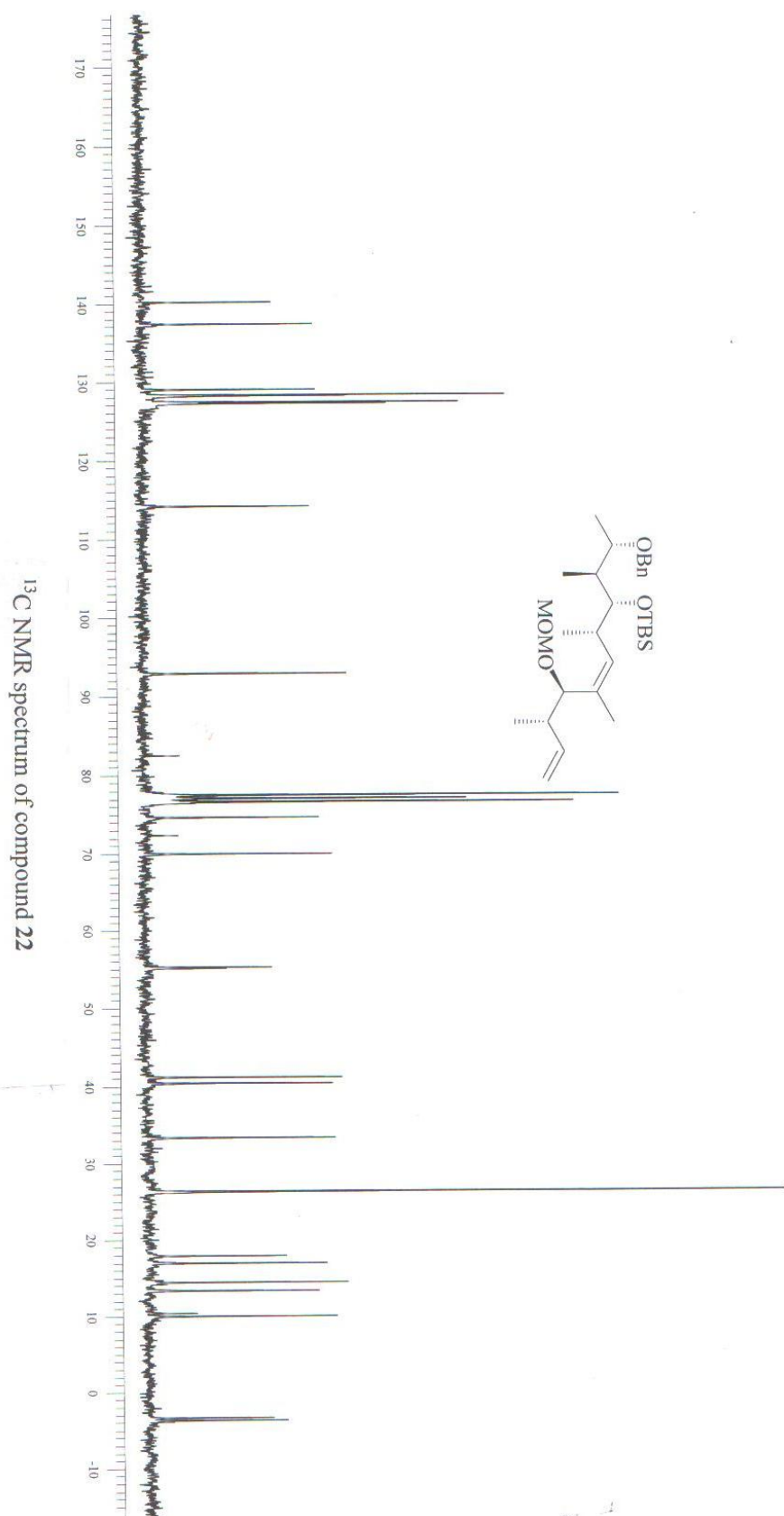


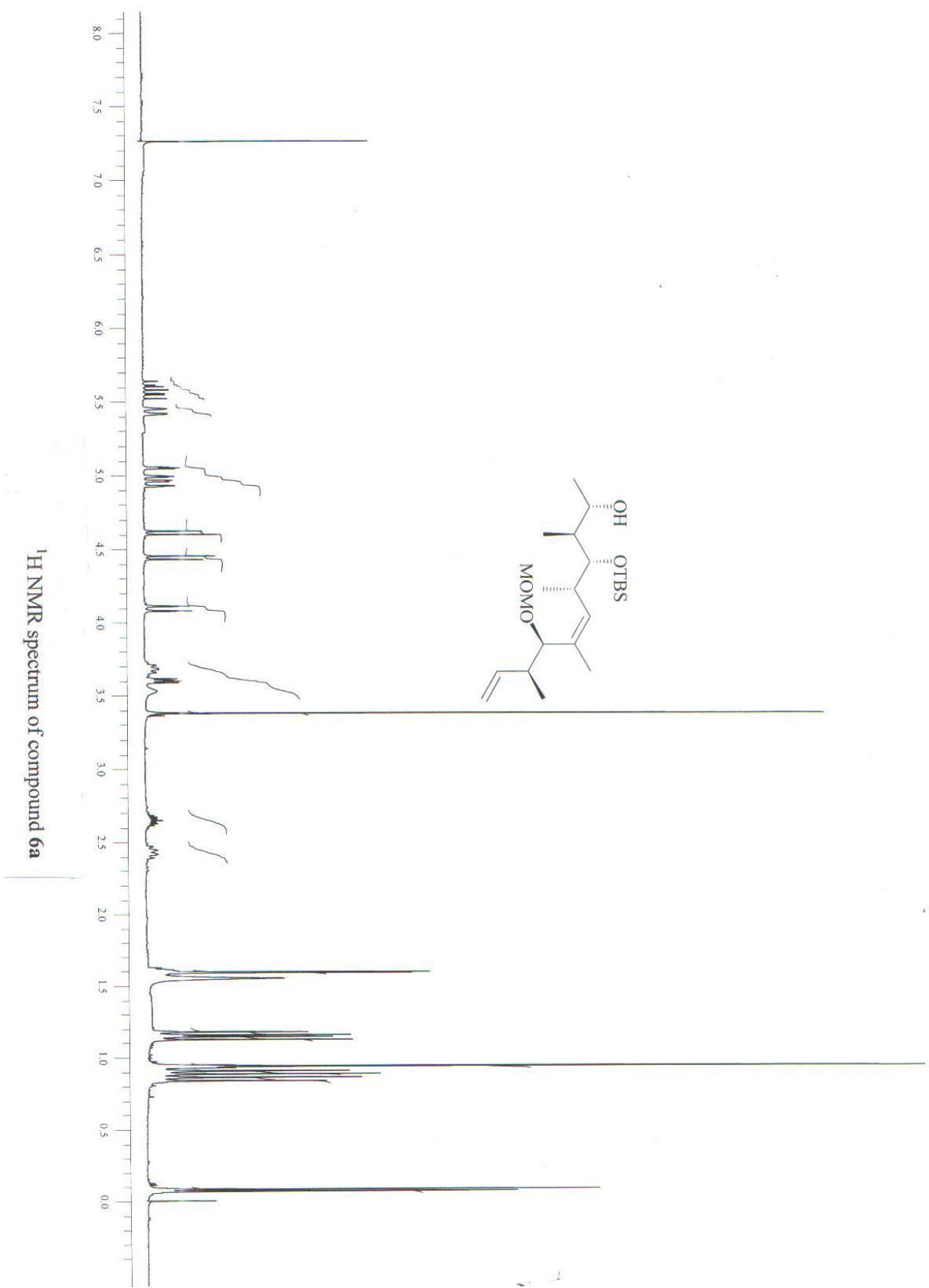


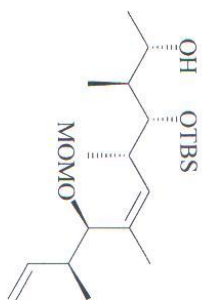


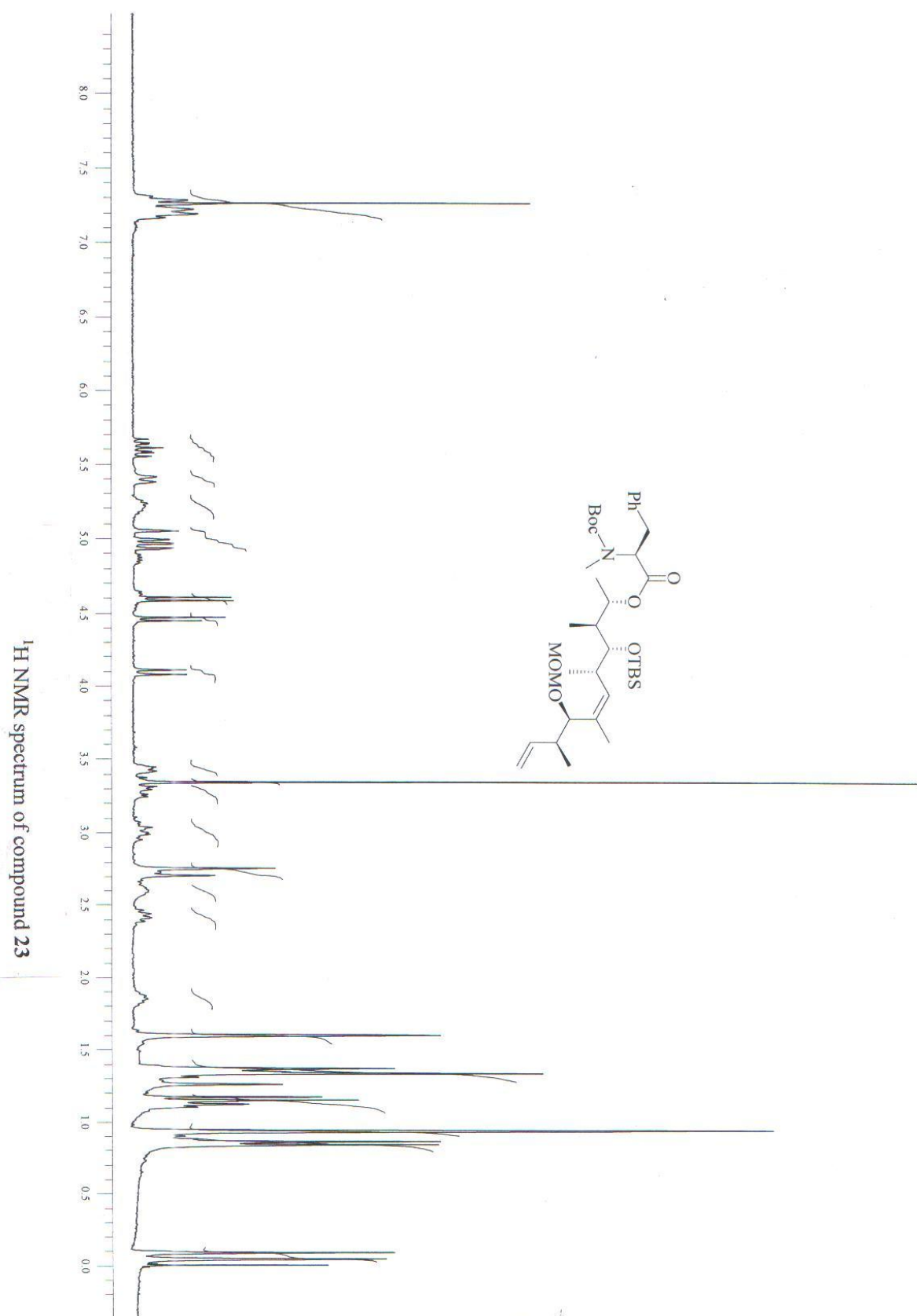




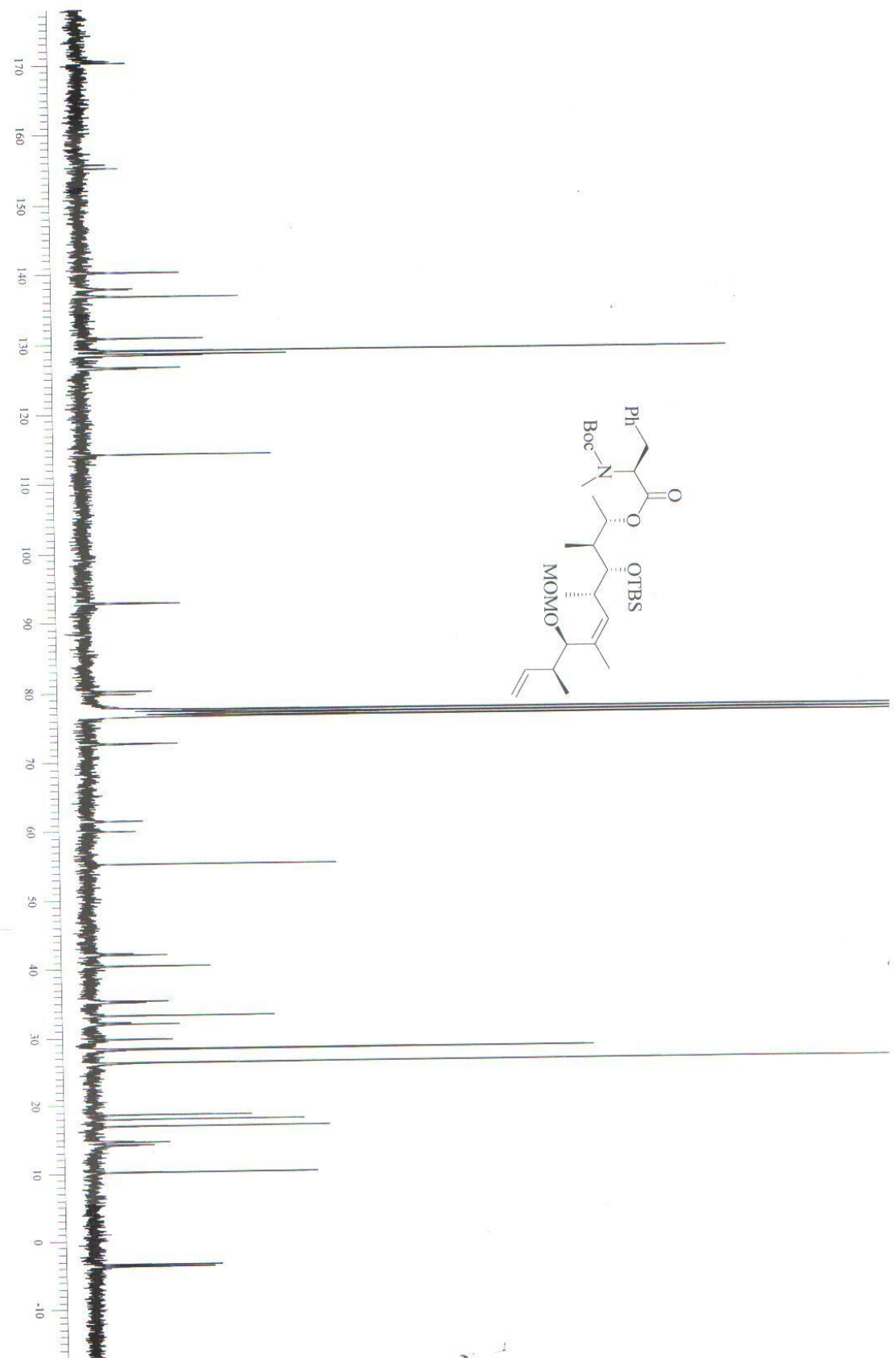


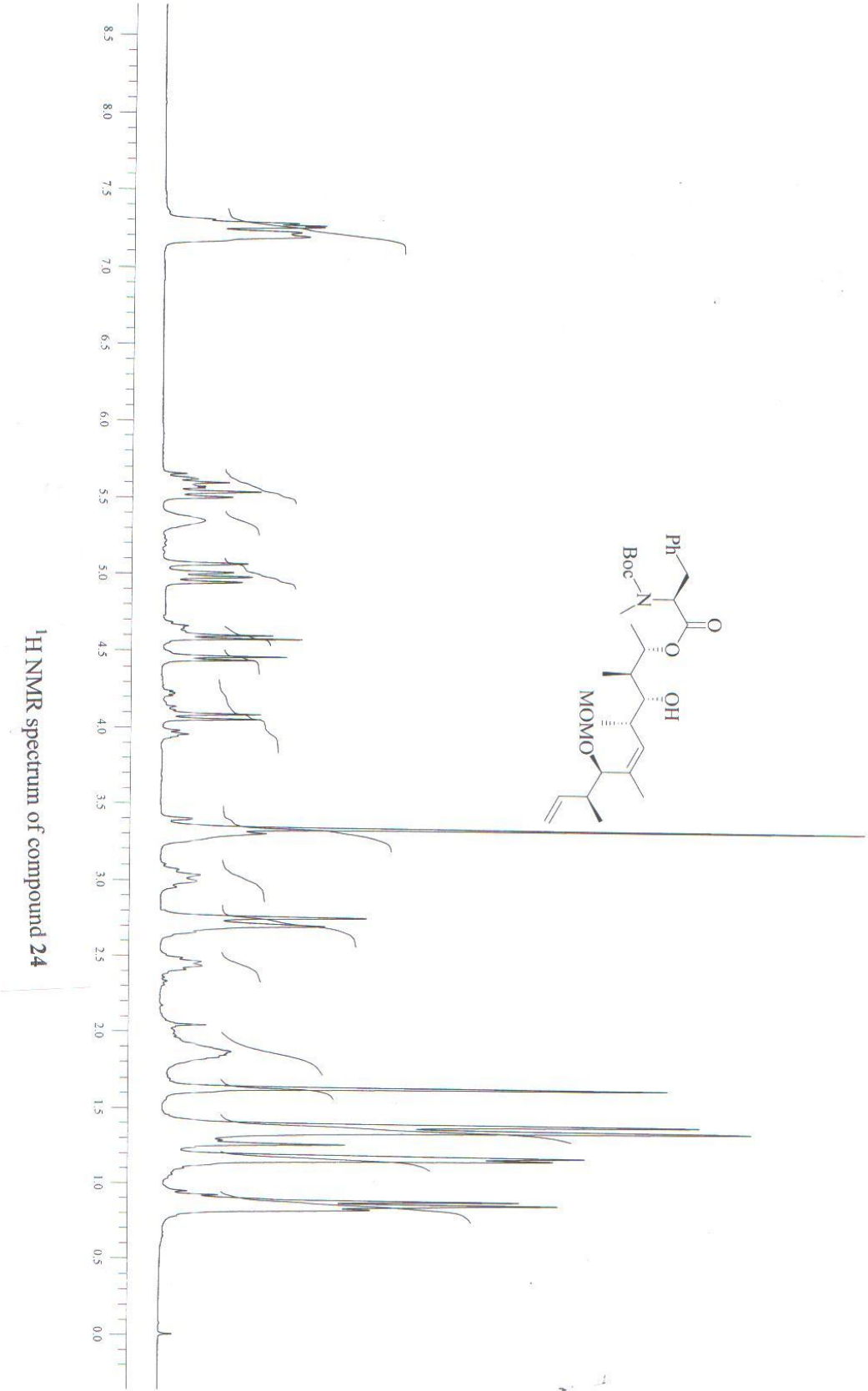




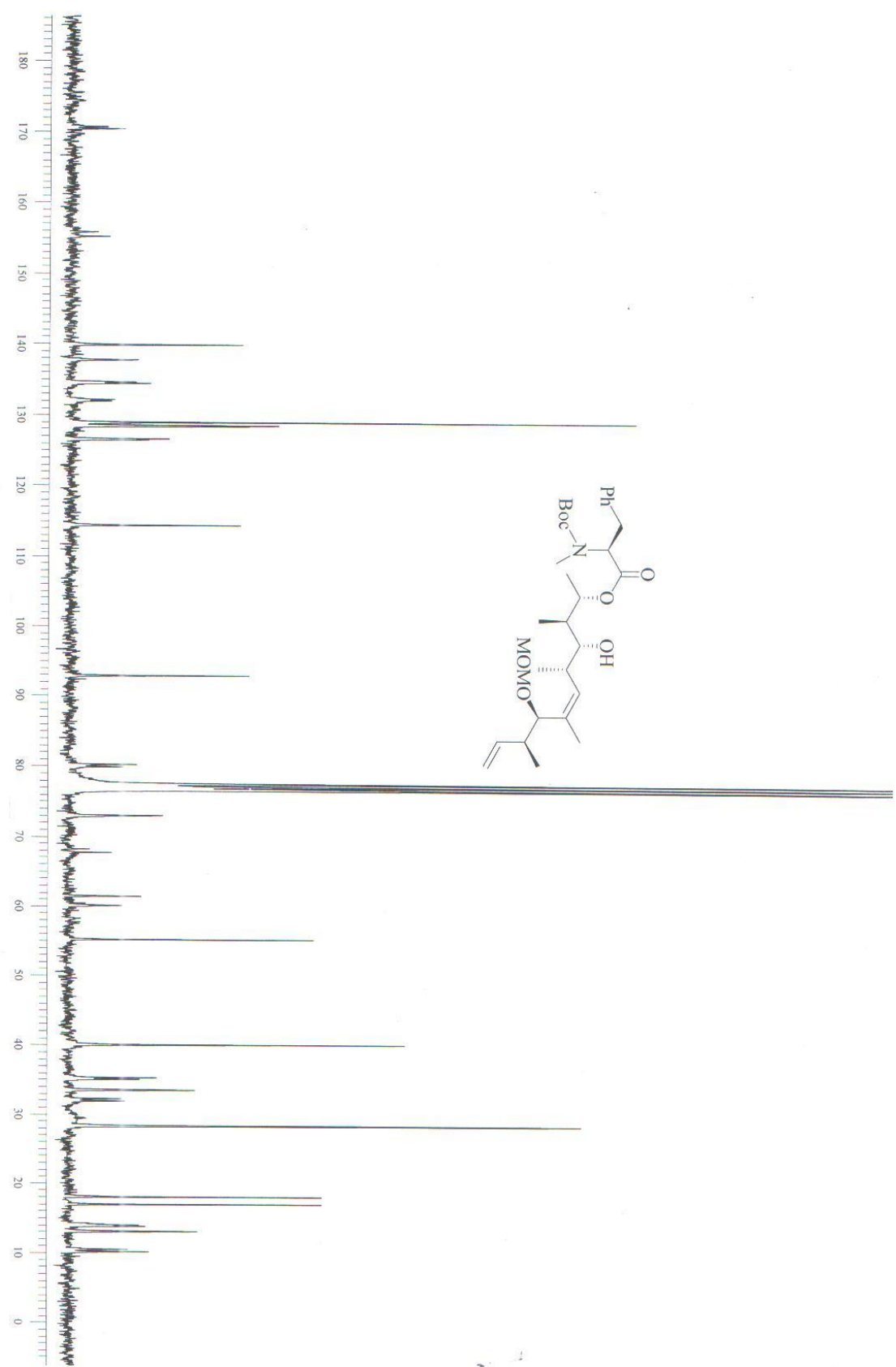


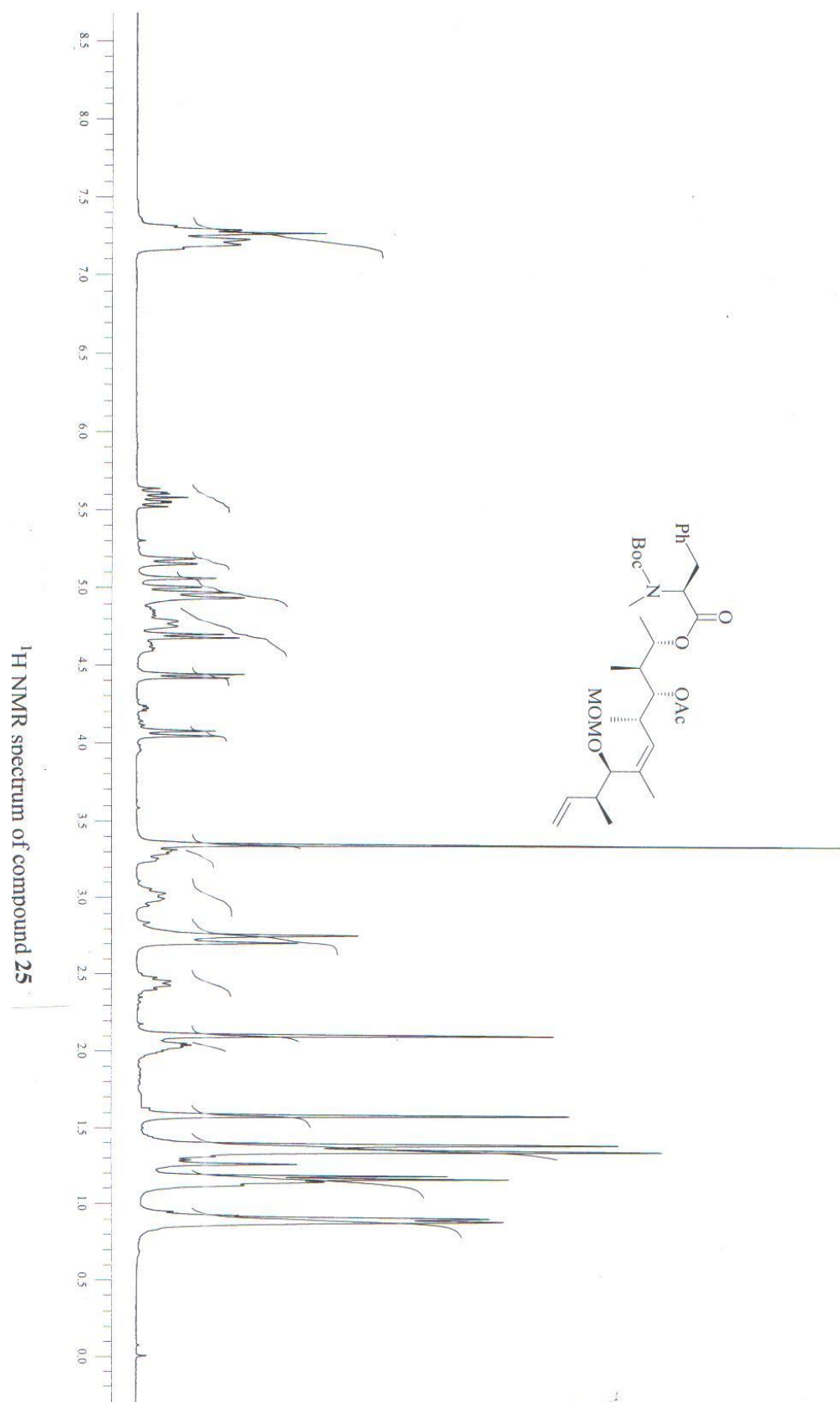
¹³C NMR spectrum of compound 23

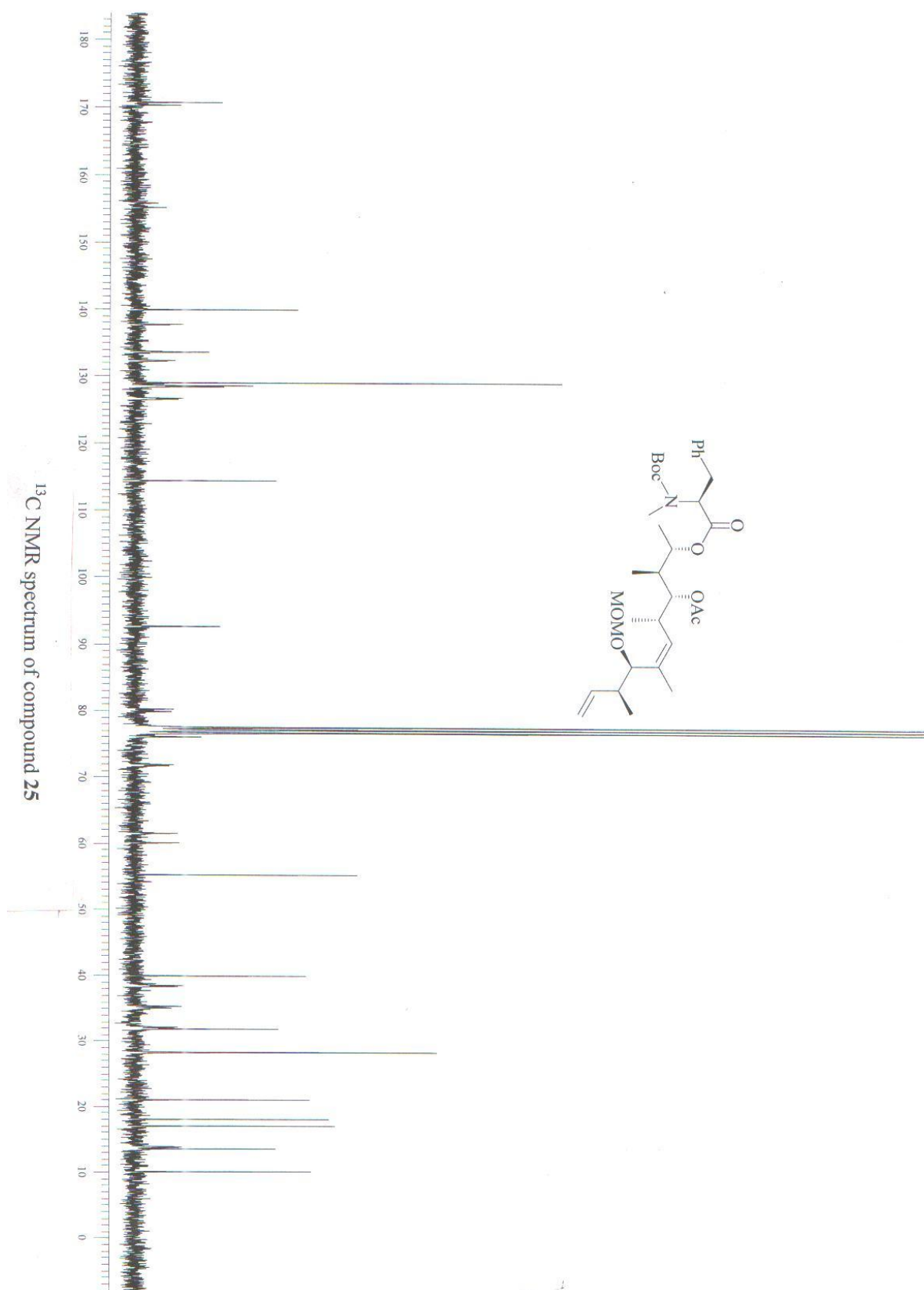


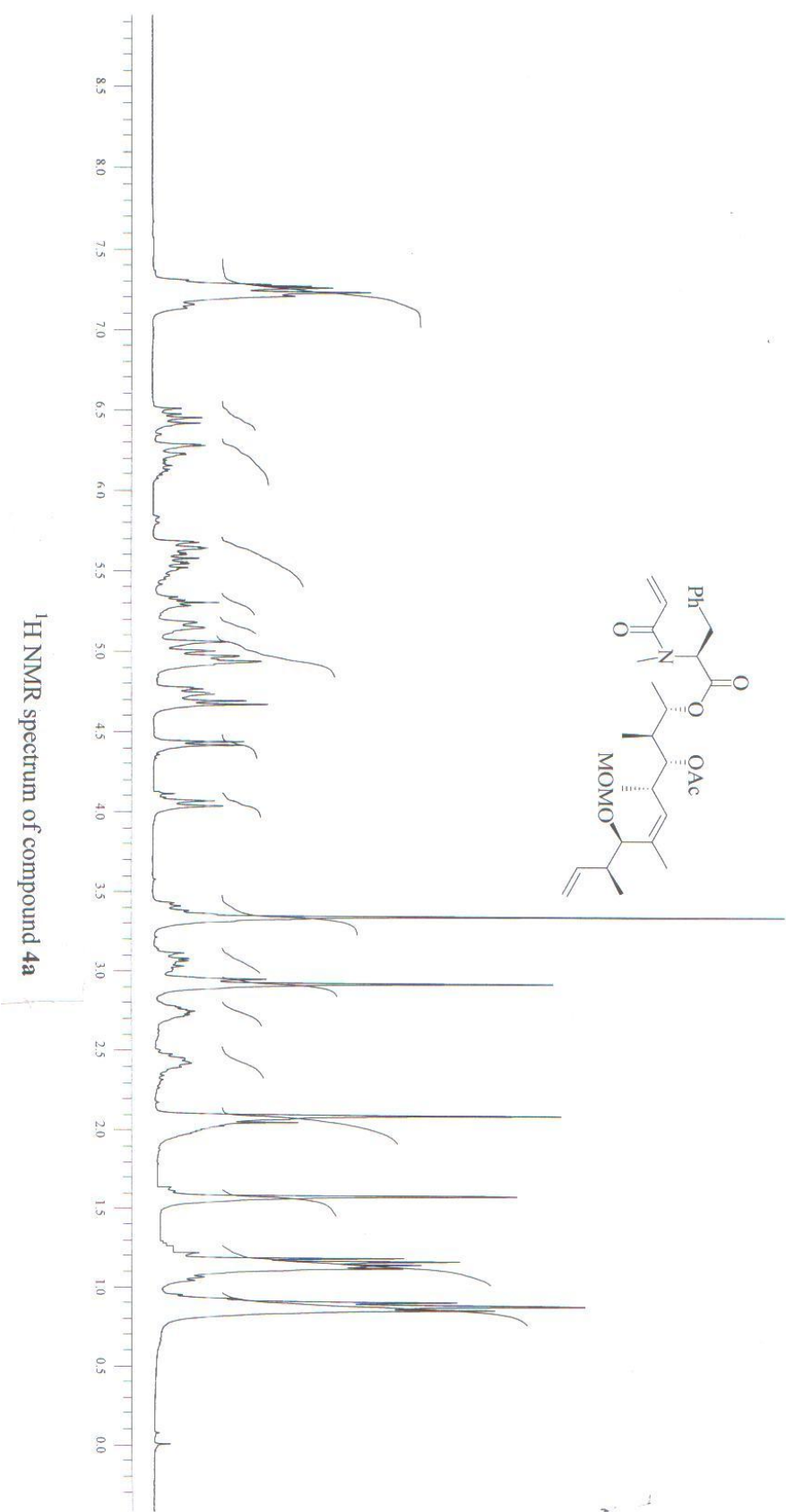


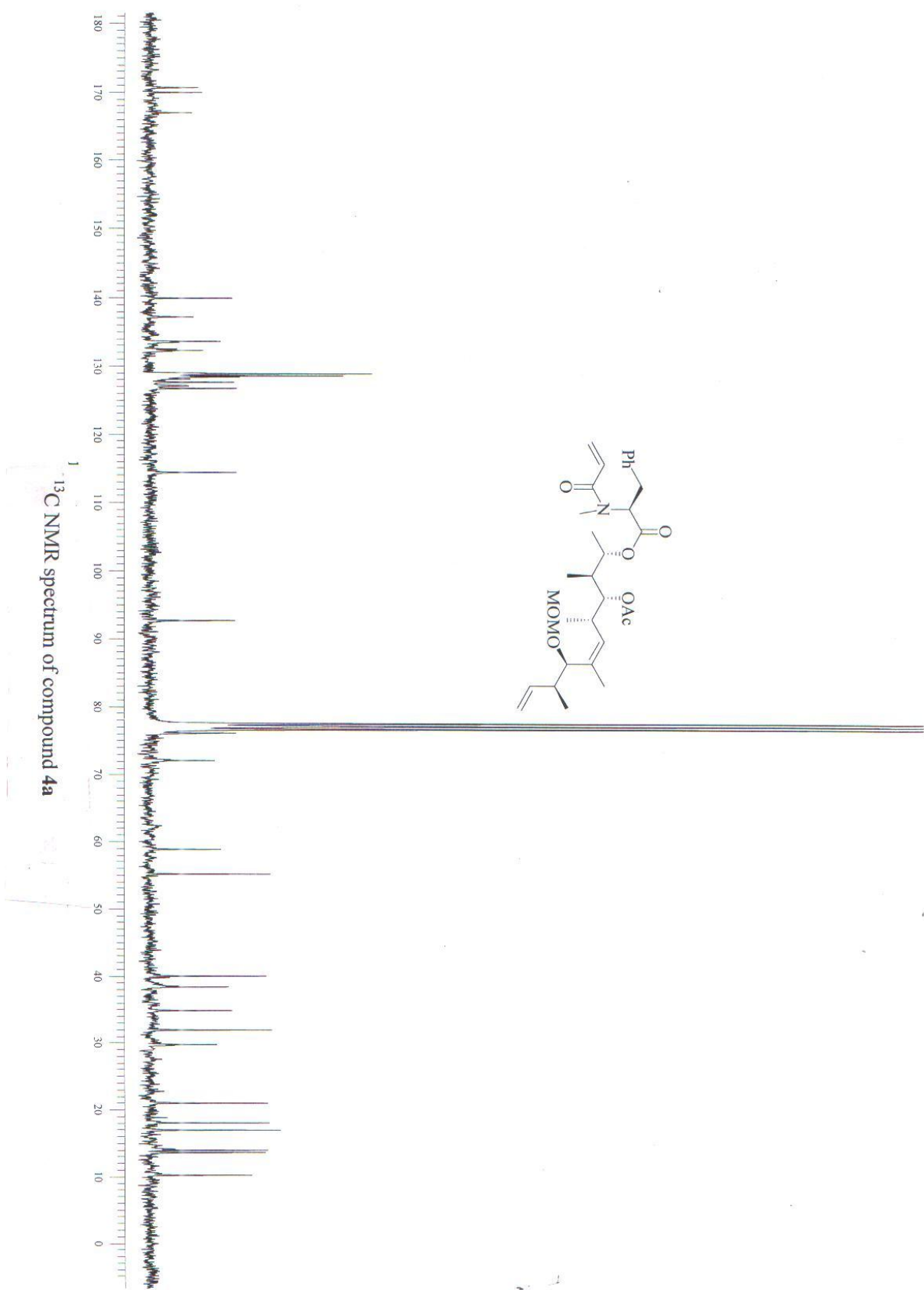
¹³C NMR spectrum of compound 24

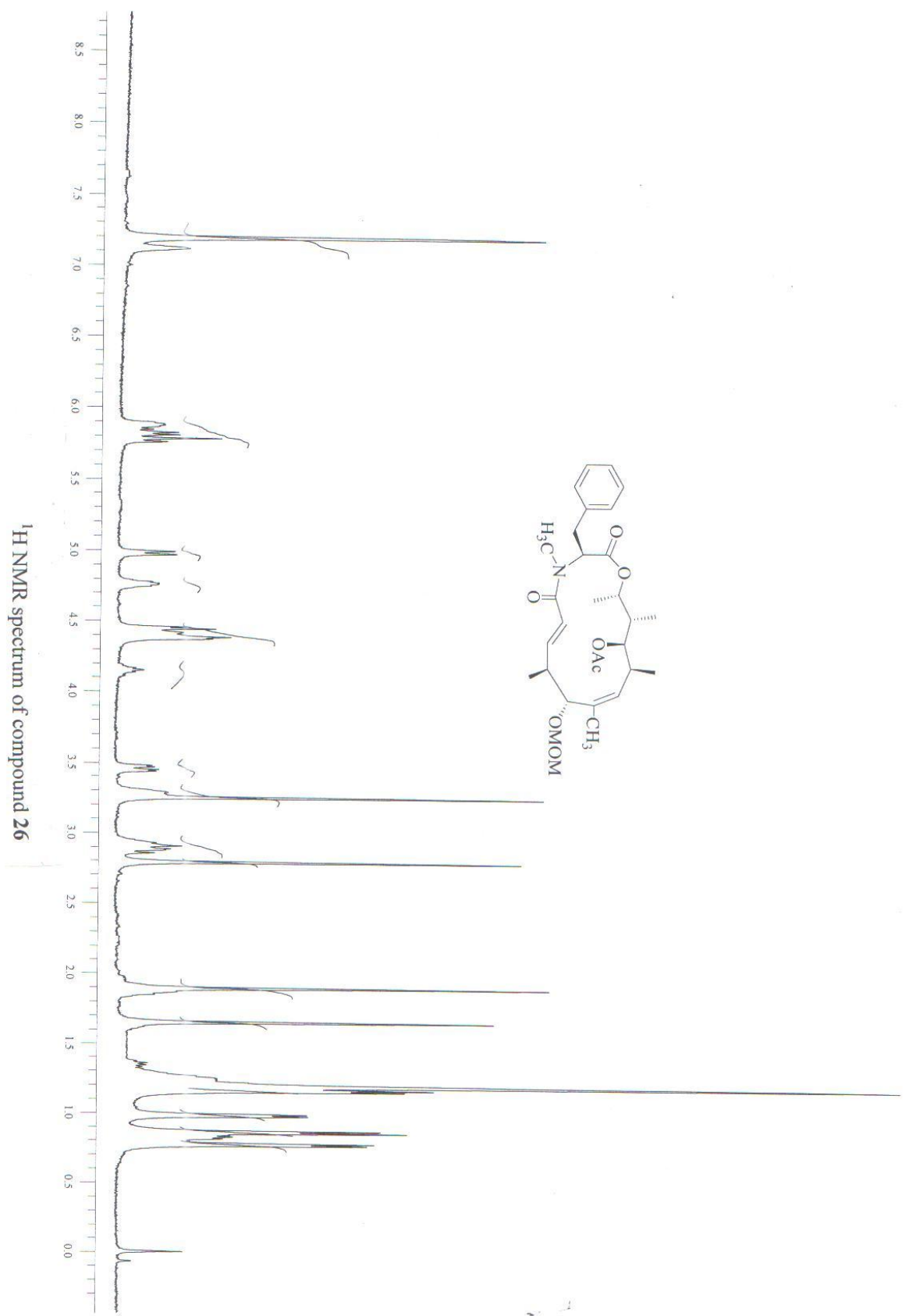


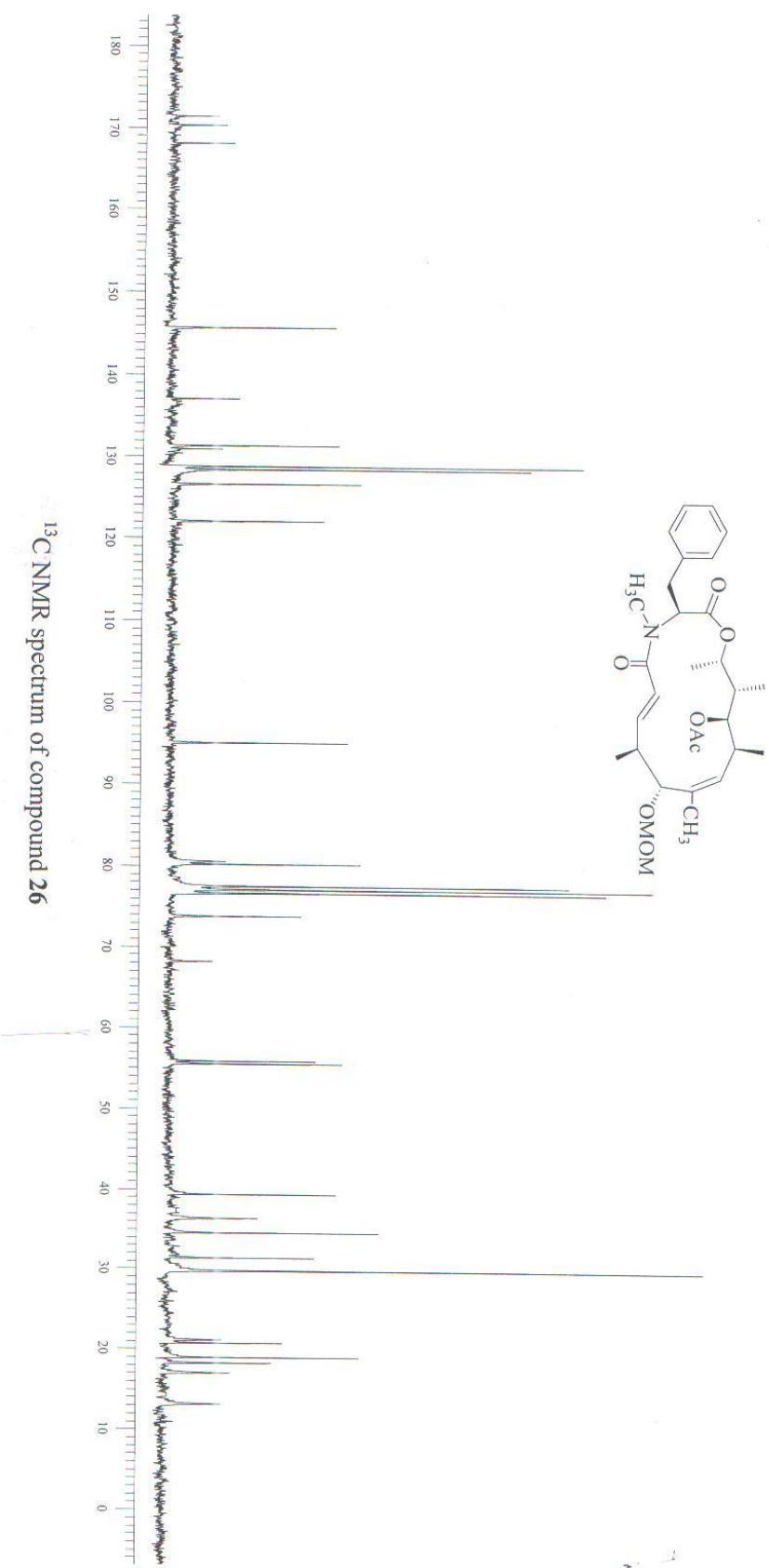


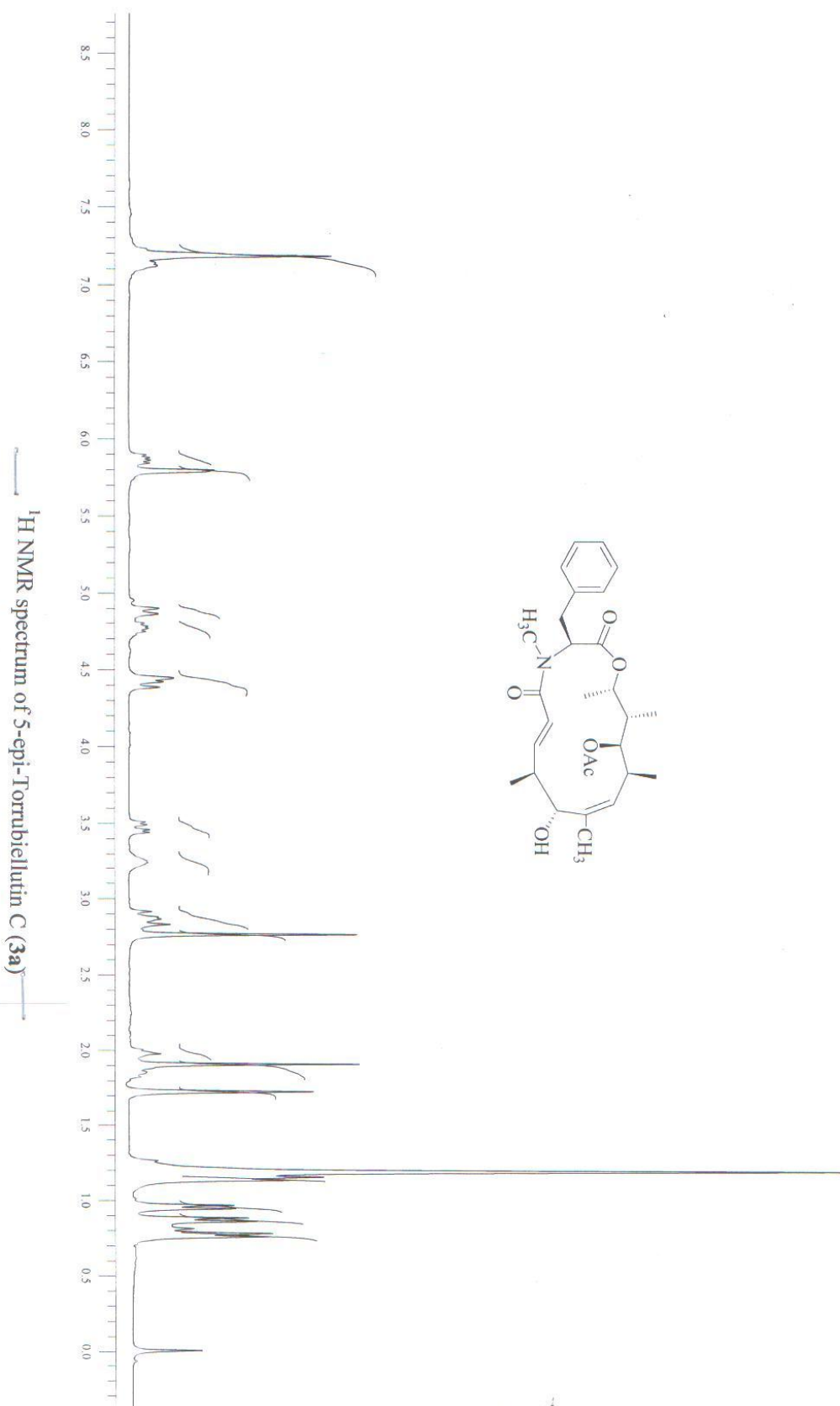


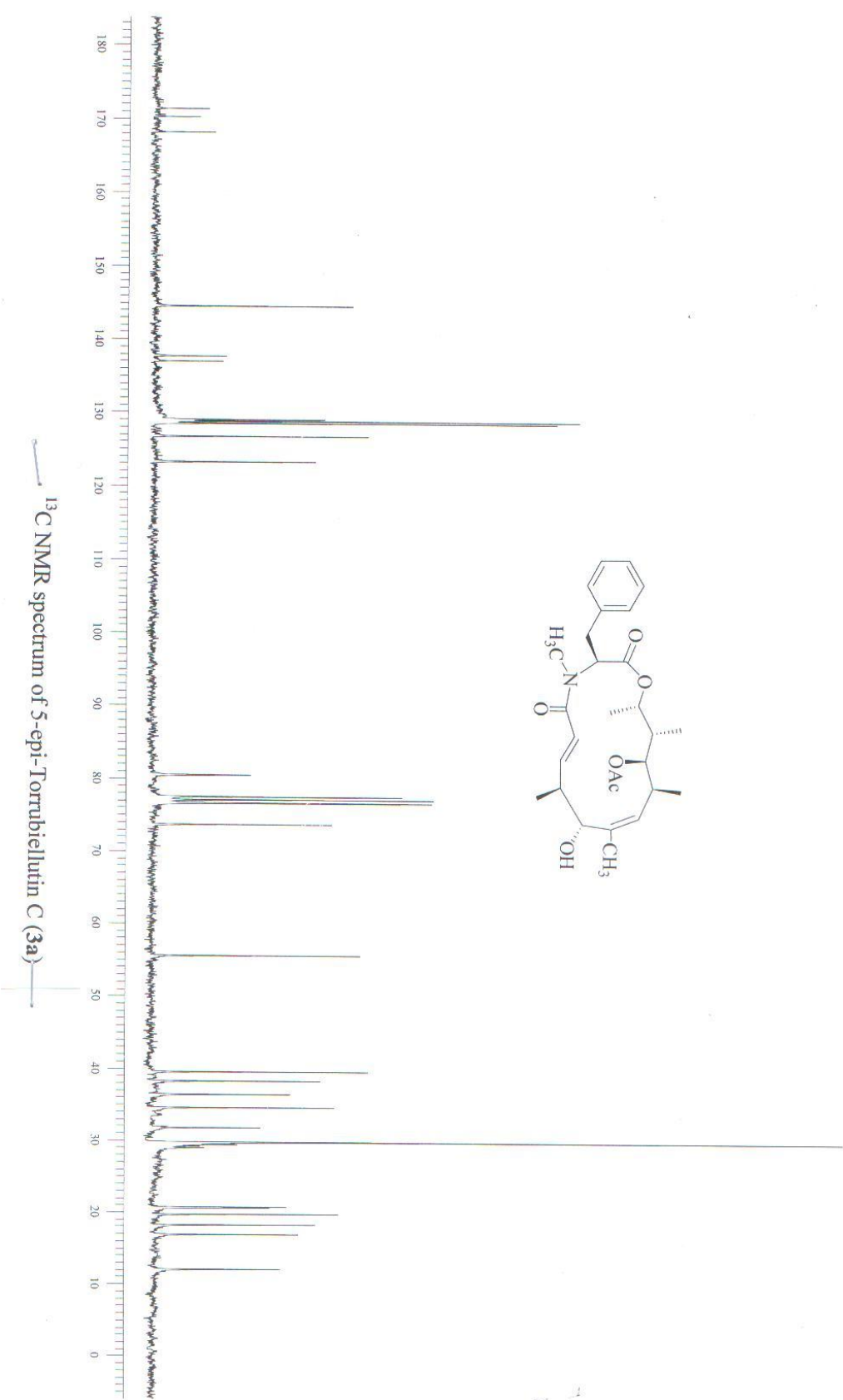








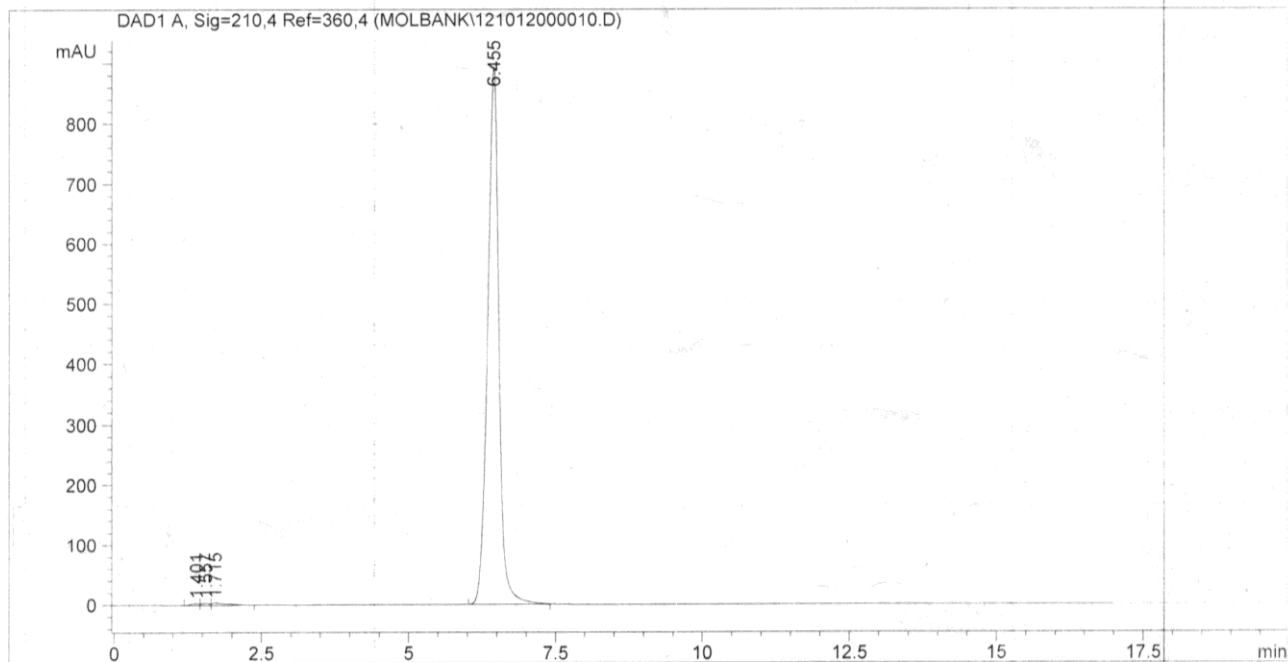




Data File C:
Sample Name: **HPLC Spectrum of 5-*epi*-Torrubiellutin C (3a)**

```
=====
Acq. Operator   : B.RAMESH                      Seq. Line :   11
Acq. Instrument : Instrument 1                    Location  : Vial 65
Injection Date  : 10/12/2012 11:37:20 PM          Inj       :    1
                                              Inj Volume: 5 µl

Acq. Method     : C:\Chem32\1\METHODS\MOLBANK55P.M
Last changed    : 10/12/2012 11:35:53 PM by B.RAMESH
Analysis Method : C:\Chem32\1\METHODS\ONLYMASS.M
Last changed    : 6/19/2013 8:40:14 PM by B.RAMESH
Method Info     : COLUMN:WATERS SYMMETRY C-18:250X4.6MM,5U
                  MOBILEPHASE:75% MEQH IN WATER
                  FLOWRATE:1.0ML/MIN
                  DETECTION:210NM
=====
```



=====
Area Percent Report
=====

```
Sorted By      : Signal
Multiplier     : 1.0000
Dilution      : 1.0000
Use Multiplier & Dilution Factor with ISTDs
```

Signal 1: DAD1 A, Sig=210,4 Ref=360,4

Peak #	RetTime [min]	Type	Width [min]	Area [mAU*s]	Height [mAU]	Area %
1	1.401	BV	0.1206	27.33620	3.17002	0.2254
2	1.557	VV	0.1293	33.73642	3.35558	0.2782
3	1.715	VB	0.2164	67.18101	3.91038	0.5540
4	6.455	BB	0.1987	1.19978e4	893.02563	98.9423

Totals : 1.21261e4 903.46162

=====