

SUPPLEMENTARY INFORMATION

Figure 1: Detection of gas products by GC with TCD detector. First spectrum is a reference injection of oxygen with a pick at 2.6ppm. Second spectrum is a reference injection of Cl₂ with a pick at 3.7ppm. Third spectrum is the injection of gas phase end product of CTC destruction reaction.

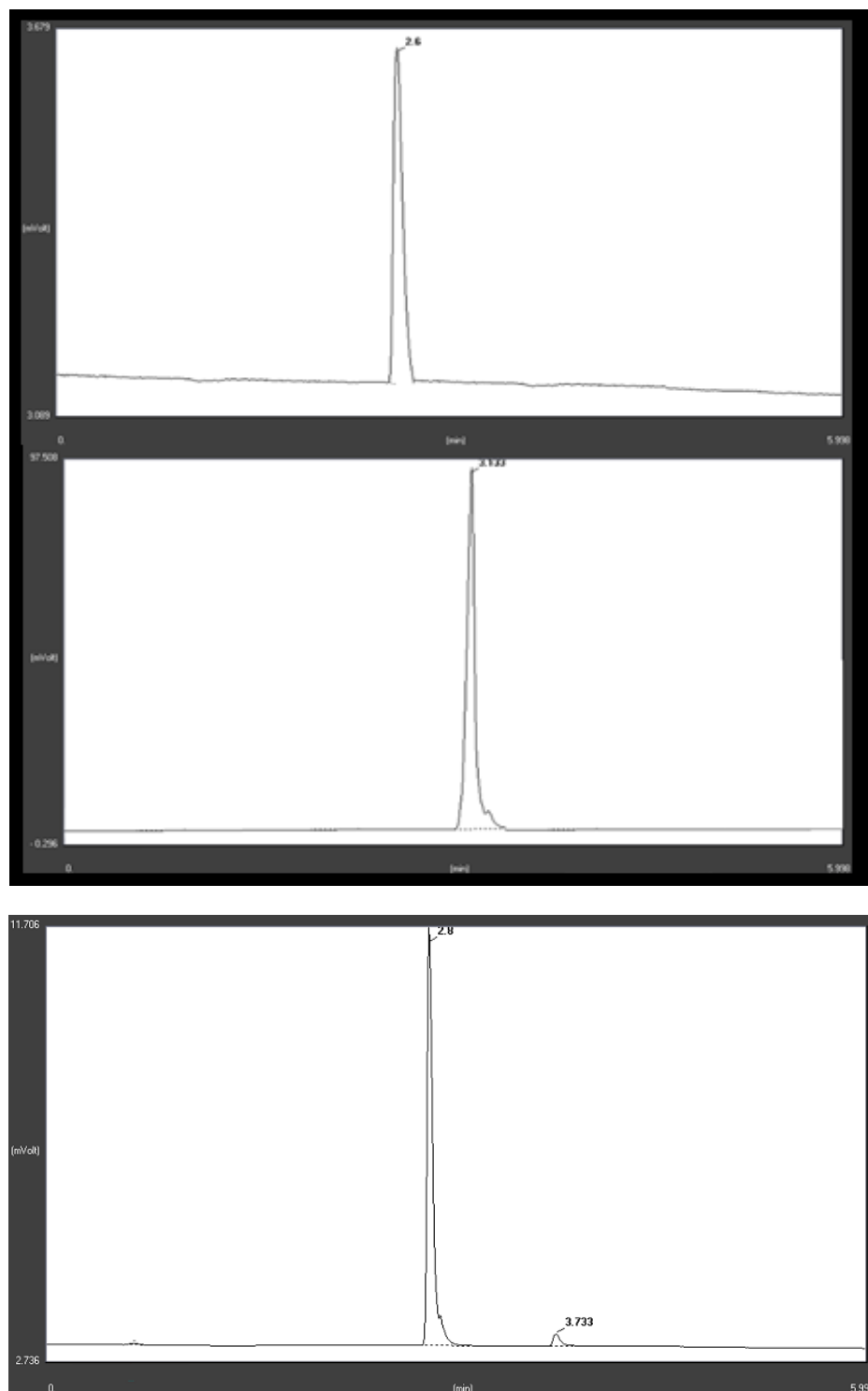


Figure 2: Detection of 1,2-dichlorobenzene by H-NMR. First spectrum is a reference of styrene. Second spectrum is a reaction end product. The spectrum clearly has shown mixed styrene and dichlorobenzene products. 1,2-dichlorobenzene can't be isolated.

