

## Supporting Information

# Chemically Conjugated Sophorolipids on CdTe QDs: A Biocompatible Photoluminescence Nanocomposite for Theranostic Applications

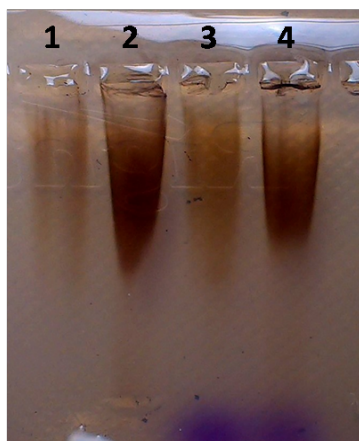
Pooja Singh, Kasturi Joshi, Debanjan Guin<sup>†\*</sup>, Asmita A. Prabhune\*

National Chemical Laboratory (CSIR-NCL), Pashan Road, Pune 411008 INDIA Fax: +91 20 2590 2636; Tel: +91 20 2590 2260

Contains

1. . Gel electrophoresis of MPA-CdTe and SL-CdTe nanocomposites

S1



**S1.** Gel electrophoresis of MPA-CdTe and SL-CdTe nanocomposites. Lane 1 - MPA-CdTe, Lane 2- SL-CdTe, Lane 3- MPA-CdTe with tracking dye (Bromophenol blue), Lane 4- SL-CdTe with tracking dye (Bromophenol blue)