

Supporting Information

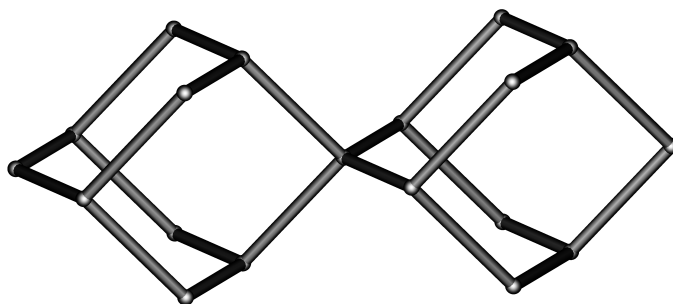


Fig. S1 Diamond topological net of **1** constructed by btdc and Co(II) centres.

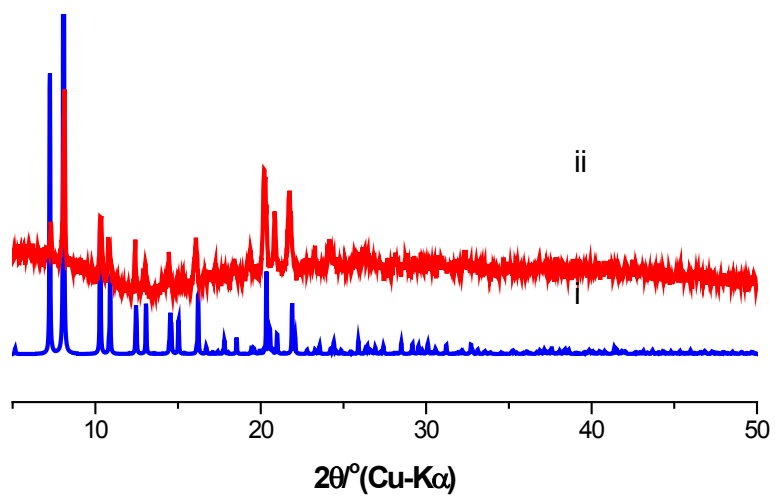


Fig. S2 Simulated (i) and experimental (ii) PXRD pattern of **1**

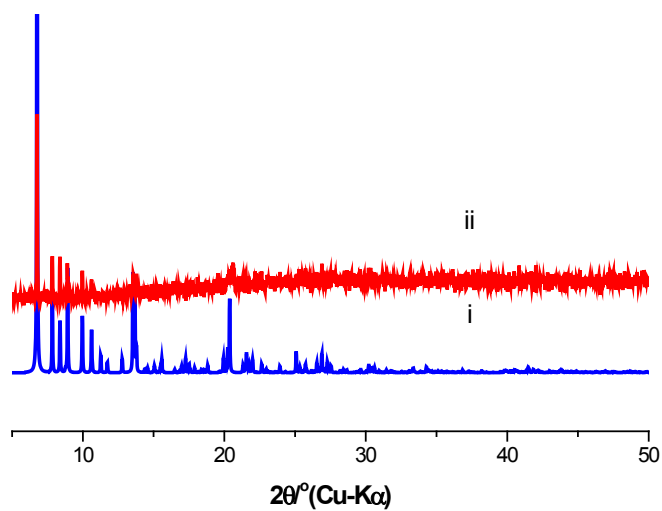


Fig. S3 Simulated (i) and experimental (ii) PXR D pattern of **2**.

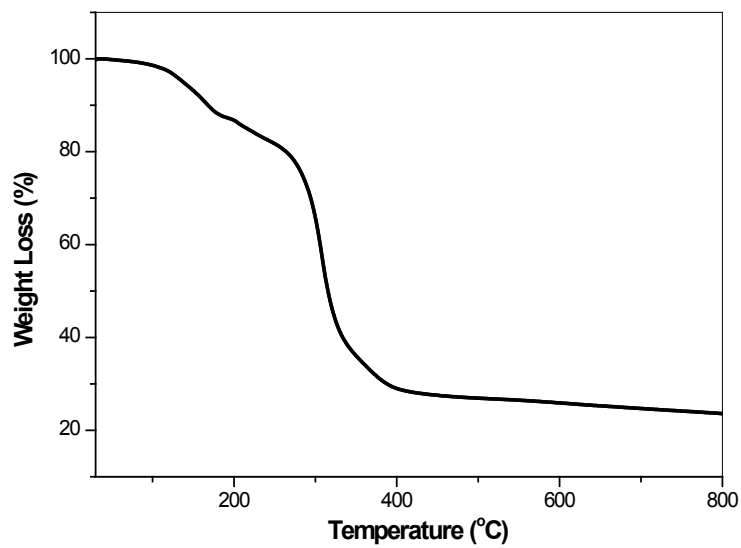


Fig. S4 Thermal gravimetric analysis (TGA) for **1**

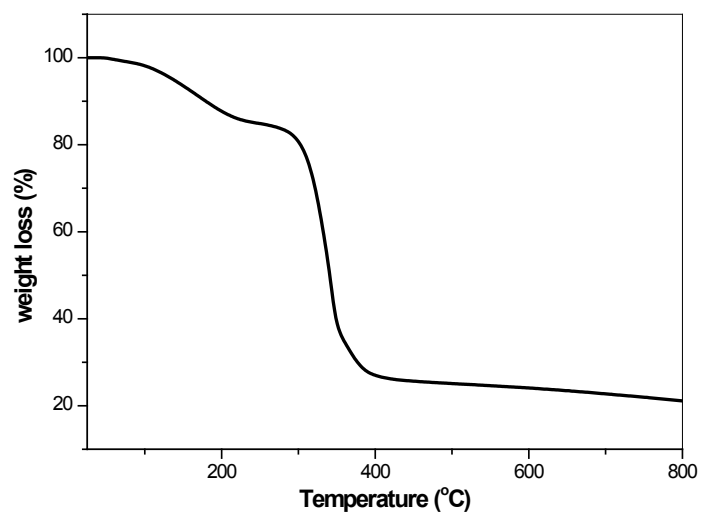


Fig. S5 Thermal gravimetric analysis (TGA) for **2**