

Tunable Core-Shell Nanoparticles: Macro-RAFT mediated One Pot Emulsion Polymerization

Niranjan Yeole, S. N. Raju Kutcherlapati, Tushar Jana*

School of Chemistry, University of Hyderabad, Hyderabad, India.

E-mail: tjscuoh@gmail.com, tjsc@uohyd.ernet.in

Tel: (91) 40 23134808

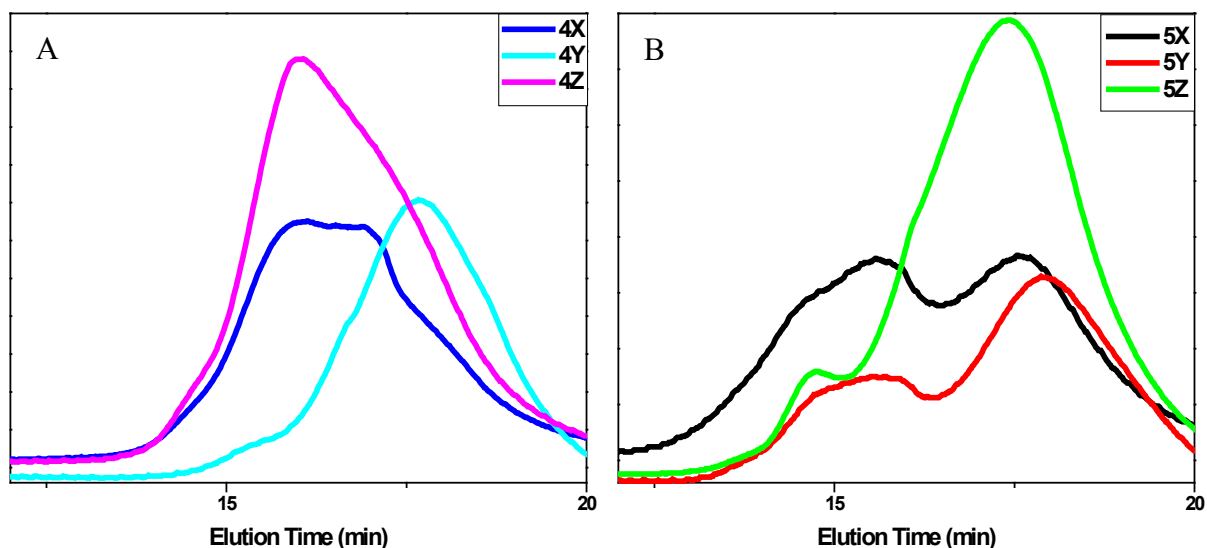
Fax: (91) 40 23012460.

Electronic Supplementary Information

Gel Permeable Chromatography:

Molecular weights and polydispersity index (PDI) of colloids were determined by Gel permeable chromatography (GPC) using polystyrene standard and eluted in DMAc at flow rate of 0.5 mL/min at 25 °C on a Water Alliance GPC model (GPC, Waters 515 HPLC) fitted with Waters 2414 refractive index detector and Styragel HMW 6E DMF column.

Sample Name	Mn	Mw	PDI	Sample Name	Mn	Mw	PDI
4X	371872	845568	2.27	5X	269112	1505849	5.59
4Y	145082	212708	1.46	5Y	128930	772616	5.99
4Z	277637	698325	2.51	5Z	163397	484757	3.02



Supporting Information Figure 1: GPC traces of colloids 4X, 4Y, 4Z shown in [A] and 5X, 5Y, 5Z shown in [B].