

Supporting information for:

Solvent Effect on Hierarchical Assembly of 2-Aminooctane- Functionalized Naphthalenediimide

Feng-Xia Wang ^a, Yong-Qiang Liu ^{a,b}, Song Qiu ^a, and Ge-Bo Pan ^{a,*}

^a Suzhou Institute of Nano-tech and Nano-bionics, Chinese Academy of Sciences,
215123 Suzhou, P. R. China

^b Also at Graduate University of Chinese Academy of Sciences

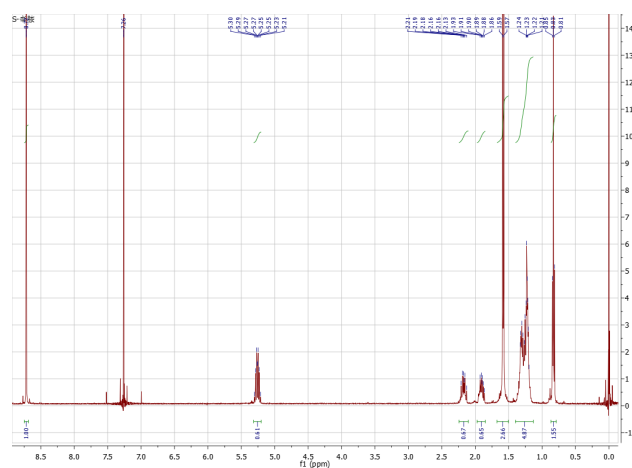


Fig. S1 ¹H NMR spectroscopy of NDI.

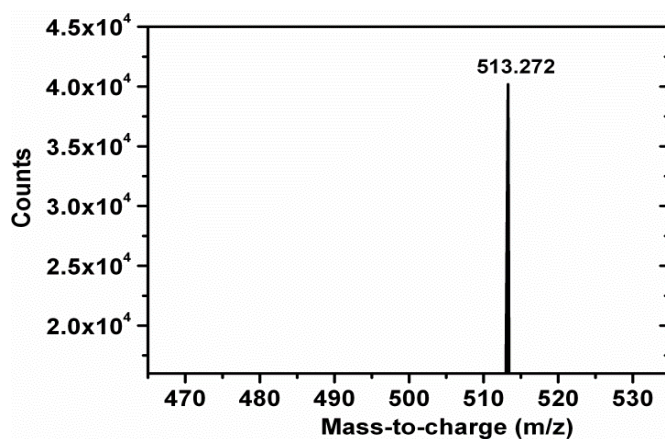


Fig. S2 HRMS of NDI.

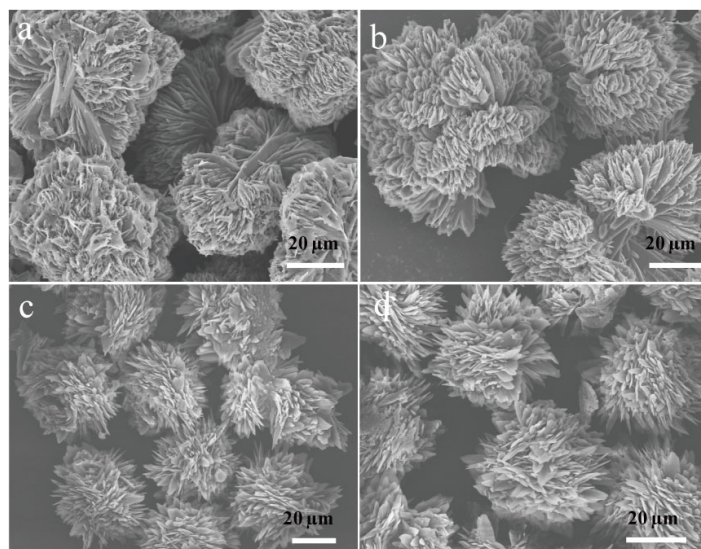


Fig. S3 SEM images of hierarchical architectures of NDI. The volume ratios of methanol to ethyl acetate were: (a) 5:1, (b) 10: 1, (c) 20:1, and (d) 50:1. The concentration of NDI in ethyl acetate was fixed at 3 mM.

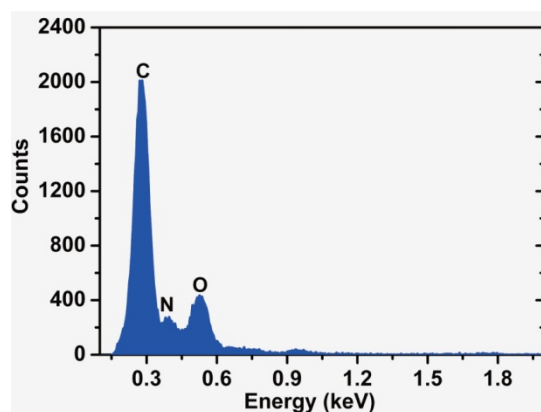


Fig. S4 EDX spectrum of hierarchical architectures of NDI.

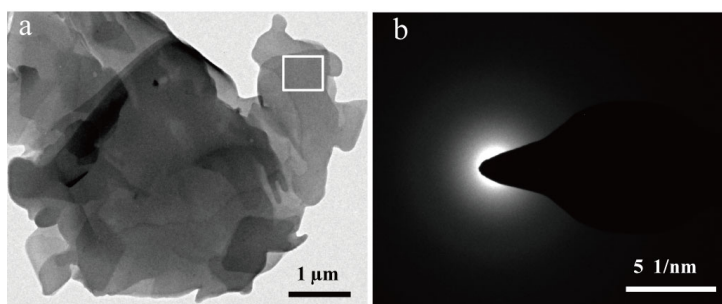


Fig. S5 (a) TEM image and (b) corresponding SAED pattern of sheet-like structures of NDI.