

Electronic Supplementary Information for:

**Assembly of Co-bimb-polyoxotungstate Hybrids:
From 1D Chain to 3D Framework Influenced by the
Charge of Keggin Anions†**

Tingting Yu, Kun Wang, Huiyuan Ma*, Haijun Pang* and Shaobin Li

Table of contents:

1. **Fig. S1** The μ_2 coordination mode of the bimb ligand
2. **Fig. S2** The interdigitated architecture in **2**
3. **Fig. S3** IR spectra of **1** and **2**
4. **Fig. S4** The simulative (red) and experimental (black) powder X-ray diffraction patterns for **1** (left) and **2** (right)
5. **Fig. S5** The TG curves for compound **1** (left) and compound **2** (right).
6. **Fig. S6** The CVs of **1**-CPE (left) in the 0.5 M Na₂SO₄/H₂SO₄ aqueous solution and **2**-CPE (right) in 1M LiCl-H₂SO₄ aqueous solution at the scan rate of 20 mV·s⁻¹
7. **Fig. S7** 40 consecutive CV cycles of the **1**-CPE (left) and **2**-CPE (right) at the scan rate of 50 mV·s⁻¹

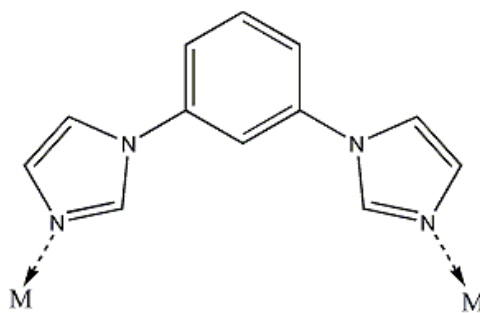


Fig. S1 the μ_2 coordination mode of the bimb ligand

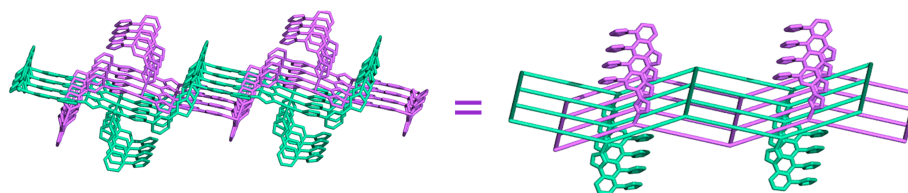


Fig. S2. The interdigitated architecture in **2**.

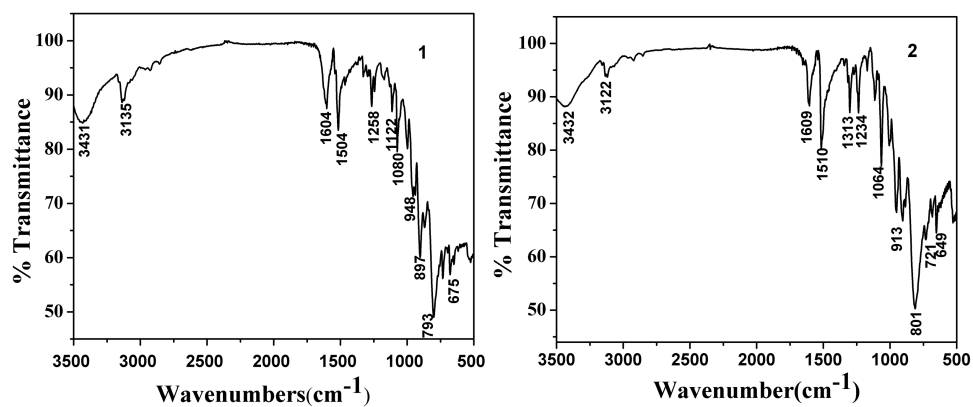


Fig. S3 IR spectra of **1** and **2**.

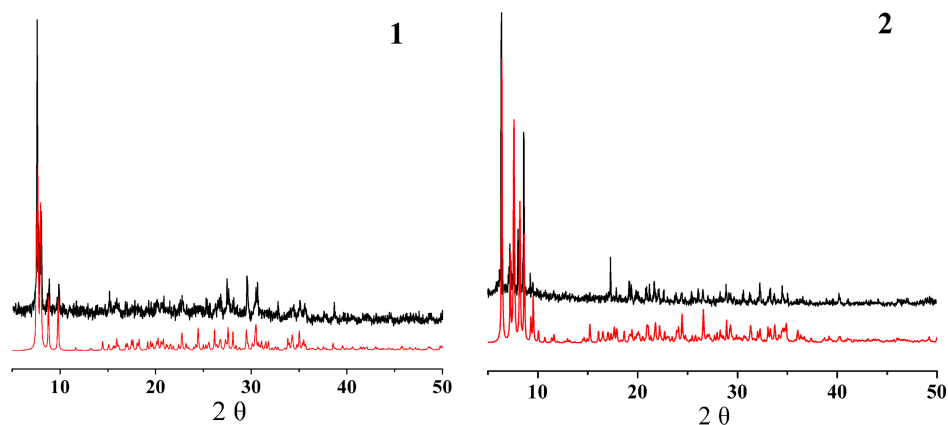


Fig. S4. The simulative (red) and experimental (black) powder X-ray diffraction patterns for **1** (left) and **2** (right)

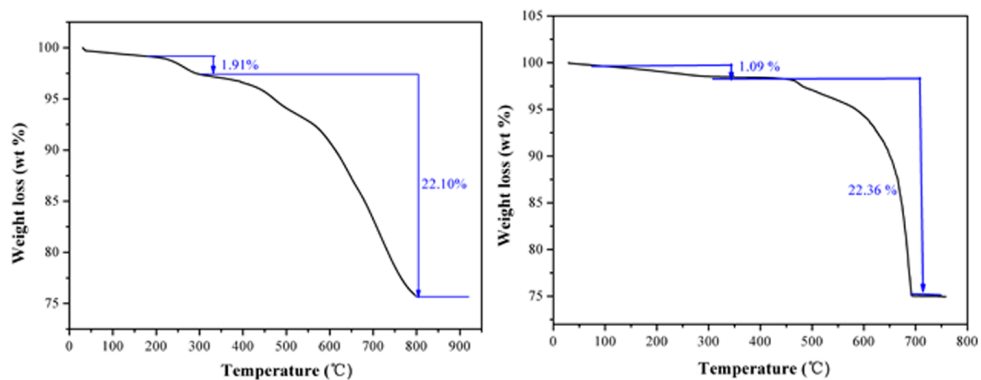


Fig. S5 The TG curves for compound **1** (left) and compound **2** (right).

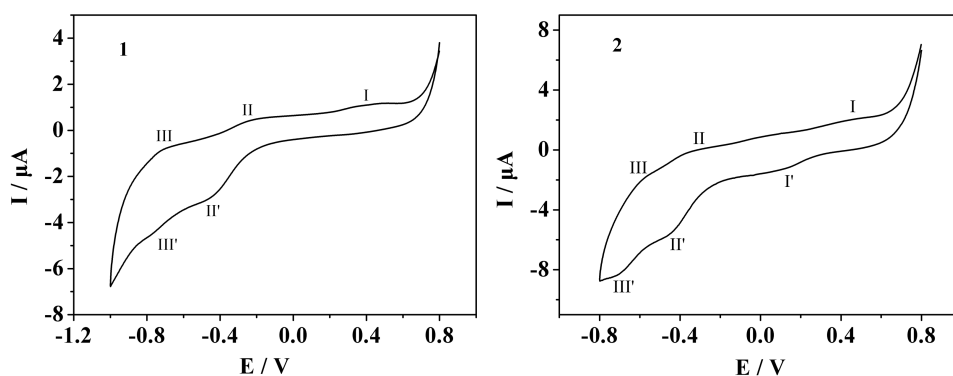


Fig. S6. The CVs of **1**-CPE (left) in the 0.5 M Na₂SO₄/H₂SO₄ aqueous solution and **2**-CPE (right) in 1M LiCl-Na₂SO₄ aqueous solution at the scan rate of 20 mV·s⁻¹.

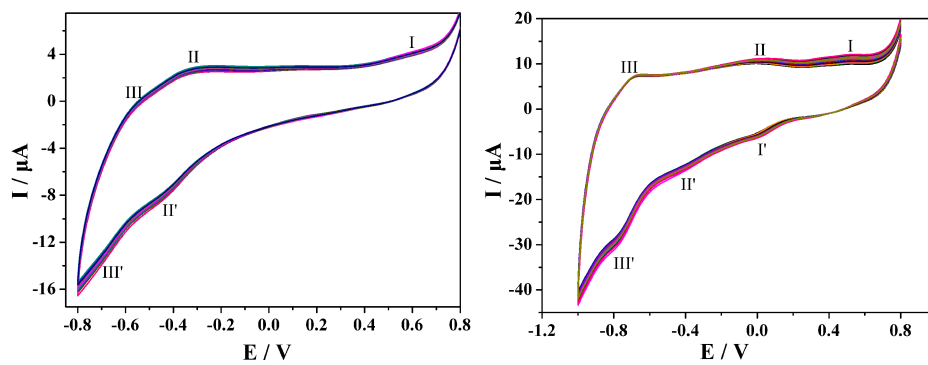


Fig. S7 40 consecutive CV cycles of the **1-CPE** (left) and **2-CPE** (right) at the scan rate of $50 \text{ mV} \cdot \text{s}^{-1}$