

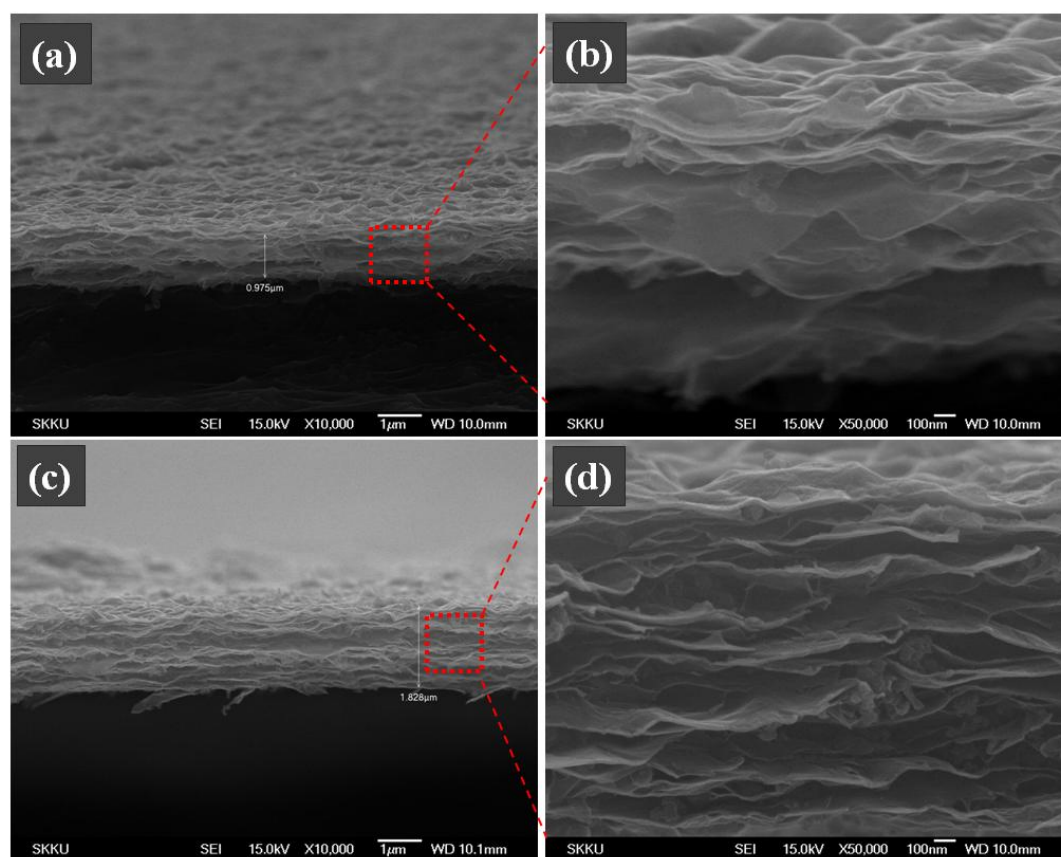
## Supporting Information

### Interleaved Porous Laminate Composed of Reduced Graphene Oxide Sheets and Carbon Black Spacers by In-Situ Electrophoretic Deposition

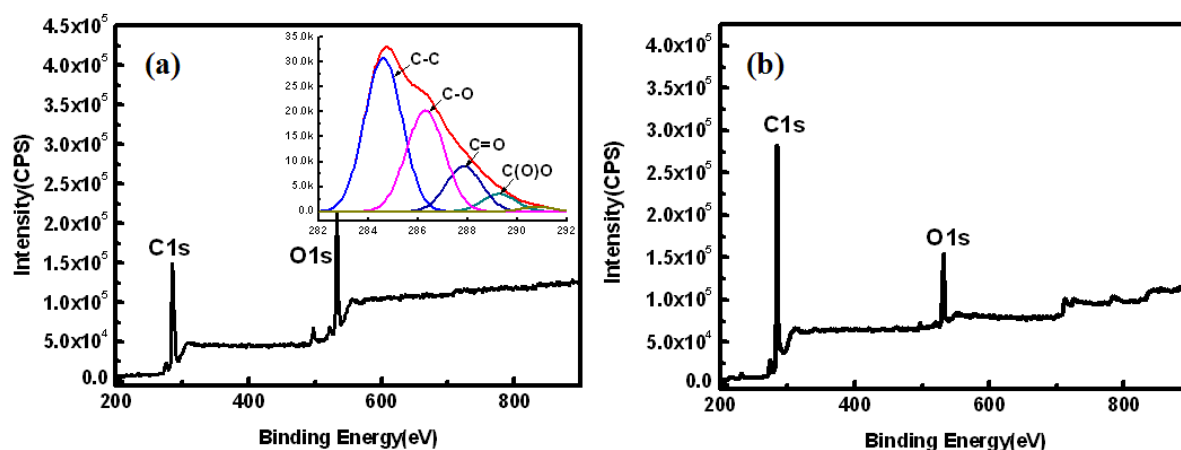
Mei Wang<sup>a</sup>, Joonsuk Oh<sup>b</sup>, Titisa Ghosh<sup>a</sup>, Seungchul Hong<sup>b</sup>, Giyong Nam<sup>b</sup>, Taeseon Hwang<sup>b</sup>, and  
Jae-Do Nam<sup>\*a,b</sup>

<sup>a</sup> Department of Energy Science, Sungkyunkwan University, Suwon, S. Korea. Fax: +82-31-292-8790; Tel: +82-31-290-7285; E-mail: jdnam@skku.edu

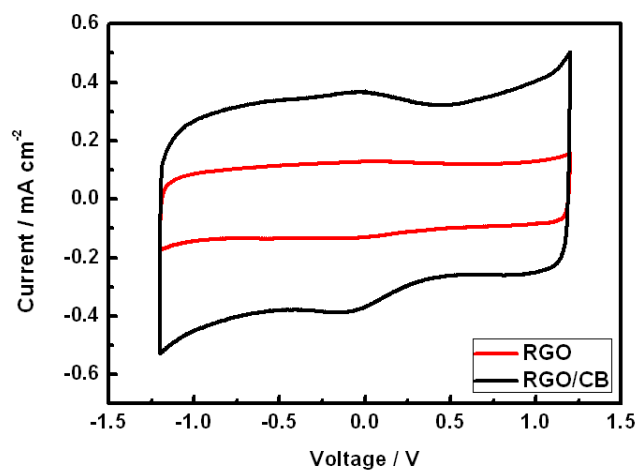
<sup>b</sup> Department of Polymer Science and Engineering, Sungkyunkwan University, Suwon, S. Korea.



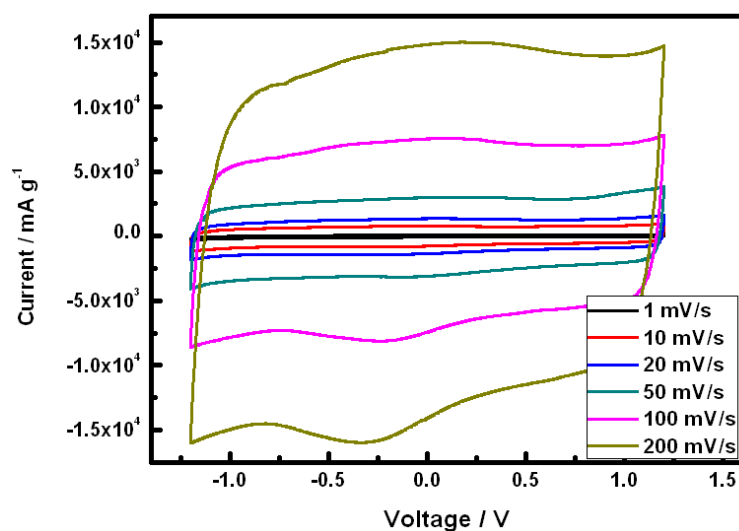
**Figure S1.** Cross-sectional FE-SEM images of deposited RGO/CB laminate with thickness 0.975 μm (a-b) and 1.828 μm (c-d). The weight percents of RGO in RGO/CB are 97% (a-b) and 94% (c-d).



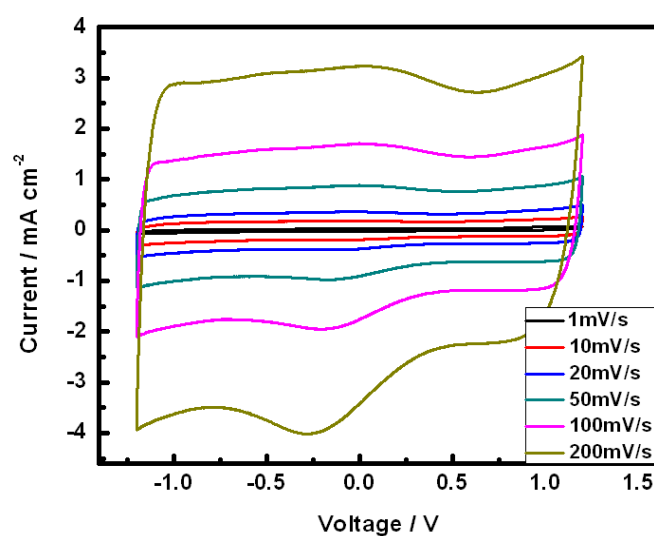
**Figure S2.** X-ray Photoelectron Spectroscopy data of GO (a) and CB (b). Narrow scan spectrum is included in the inset of (a).



**Figure S3.** Cyclic Voltammetry (CV) measurement based on the electrode area of RGO and RGO/CB membrane electrodes in the scan rate of 20 mV/s.



**Figure S4.** CV measurement of RGO membrane electrode in the scan rates of 1, 10, 20, 50, 100, and 200 mV/s.



**Figure S5.** CV measurement based on the electrode area of RGO/CB membrane electrode in scan rates of 1, 10, 20, 50, 100, and 200 mV/s.