

**Electronic Supplementary Information (ESI)**

**Electrospun Polymer/Quantum Dot Composite Fiber as Down Conversion Phosphor Layers for White Light-Emitting Diodes**

Sung-Yong Min,<sup>a</sup> Jiwon Bang,<sup>b</sup> Juwon Park,<sup>b</sup> Chang-Lyoul Lee,<sup>c</sup> Sungwon Lee,<sup>d</sup> Jong-Jin Park,<sup>e</sup> Unyong Jeong,<sup>d</sup> Sungjee Kim<sup>\*b</sup> and Tae-Woo Lee<sup>\*a</sup>

<sup>a</sup> Department of Materials Science and Engineering, Pohang University of Science and Technology (POSTECH), San 31, Hyoja-dong, Nam-gu, Pohang, Gyeongbuk 790-784, Republic of Korea.

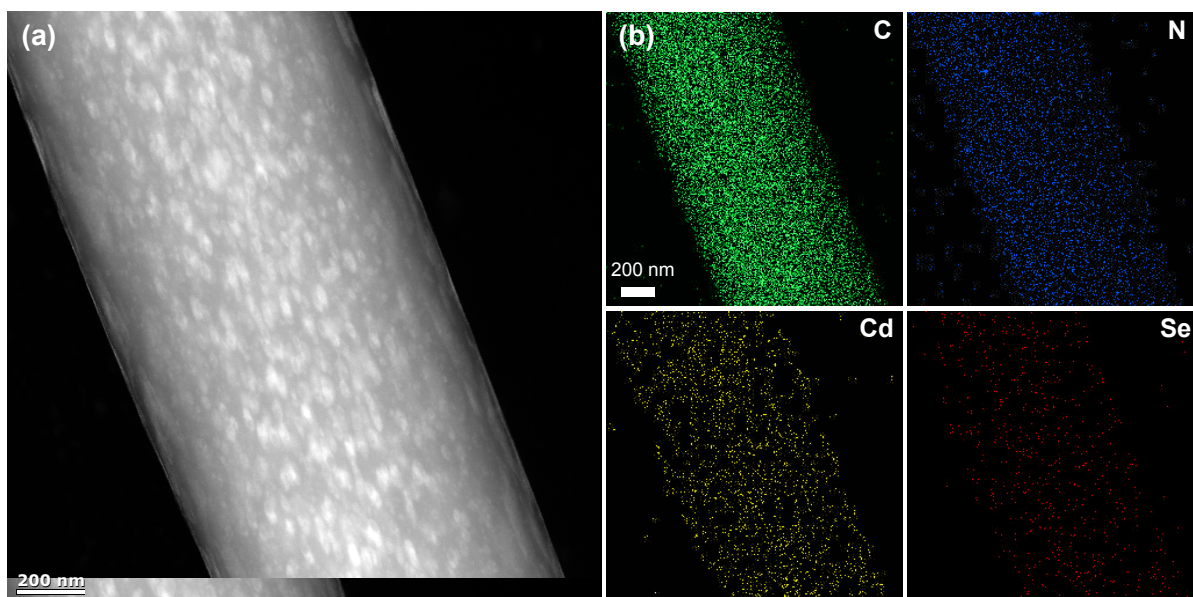
<sup>b</sup> Department of Chemistry, Pohang University of Science and Technology (POSTECH), San 31, Hyoja-dong, Nam-gu, Pohang, Gyeongbuk 790-784, Republic of Korea.

<sup>c</sup> Advanced Photonics Research Institute (APRI), Gwangju Institute of Science & Technology (GIST), Oryong-dong, Buk-gu, Gwangju, 500-712, Republic of Korea.

<sup>d</sup> Department of Materials Science and Engineering, Yonsei University, 134, Shinchon-dong, Seoul, 120-749, Republic of Korea.

<sup>e</sup> Samsung Advanced Institute of Technology, Mt.14-1, Nongseo-dong, Giheung-gu, Yongin-si, Gyeonggi-do 446-712, Republic of Korea.

\*Corresponding authors: (Tae-Woo Lee) [twlee@postech.ac.kr](mailto:twlee@postech.ac.kr) & (Sungjee Kim) [sungjee@postech.ac.kr](mailto:sungjee@postech.ac.kr)



**Fig. S1** (a) Dark-field scanning transmission electron microscopy image of electrospun PVK / QDs composite fiber. (b) Energy-dispersive X-ray spectroscopy mapping of carbon, nitrogen, cadmium and selenium atoms. Carbon and nitrogen atoms are originated from PVK. Cadmium and selenium atoms are originated from QDs.