

Fig. S1 Typical total ion current (TIC) chromatograms of plasma in different groups.

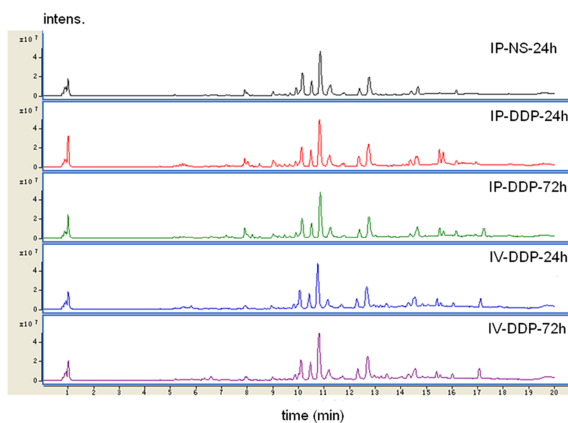


Fig. S2 The result of multivariate statistical analysis. (A) PLS-DA score plot of IV-DDP-24h and IV-DDP-72h. (B) PLS-DA score plot of IP-DDP-72h and IV-DDP-72h.

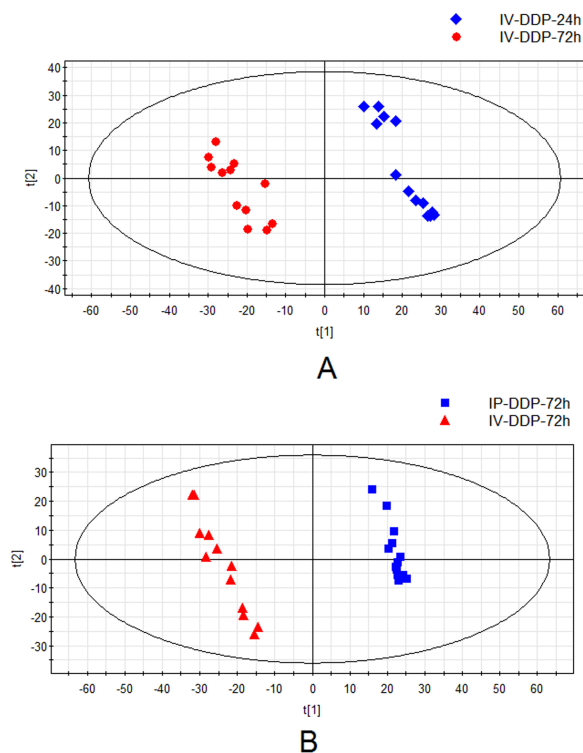


Table S1. R^2 and Q^2 value of established PLS-DA models.

	IP-NS-24h vs IP-DDP-24h	IP-NS-72h vs IP-DDP-72h	IV-NS-24h vs IV-DDP-24h	IV-NS-72h vs IV-DDP-72h
R^2Y	0.999	0.999	0.999	0.999
R^2X	0.458	0.338	0.354	0.401
Q^2	0.982	0.966	0.871	0.95

Note:

R^2 and Q^2 parameters indicate the fitness and prediction of the model.