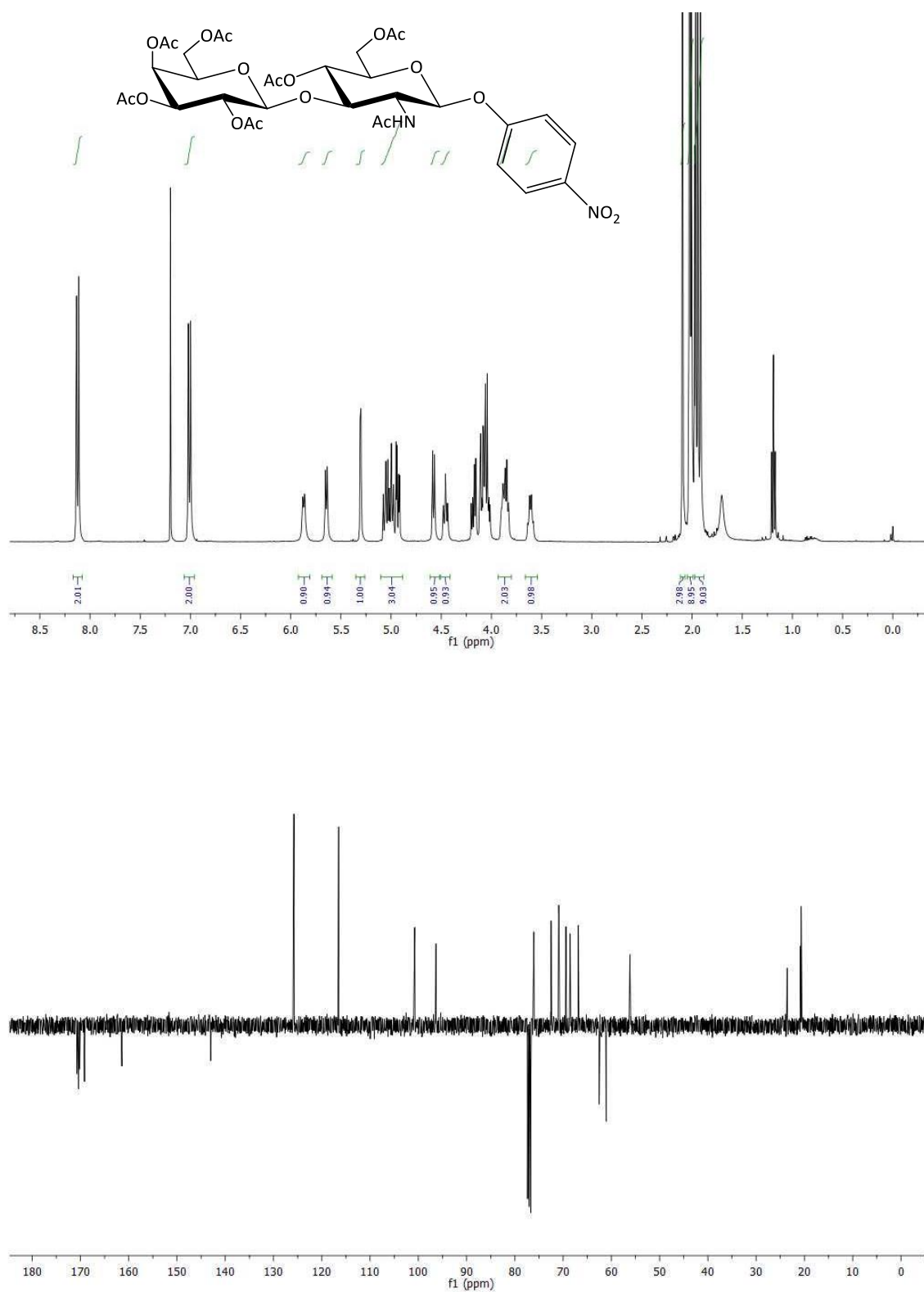
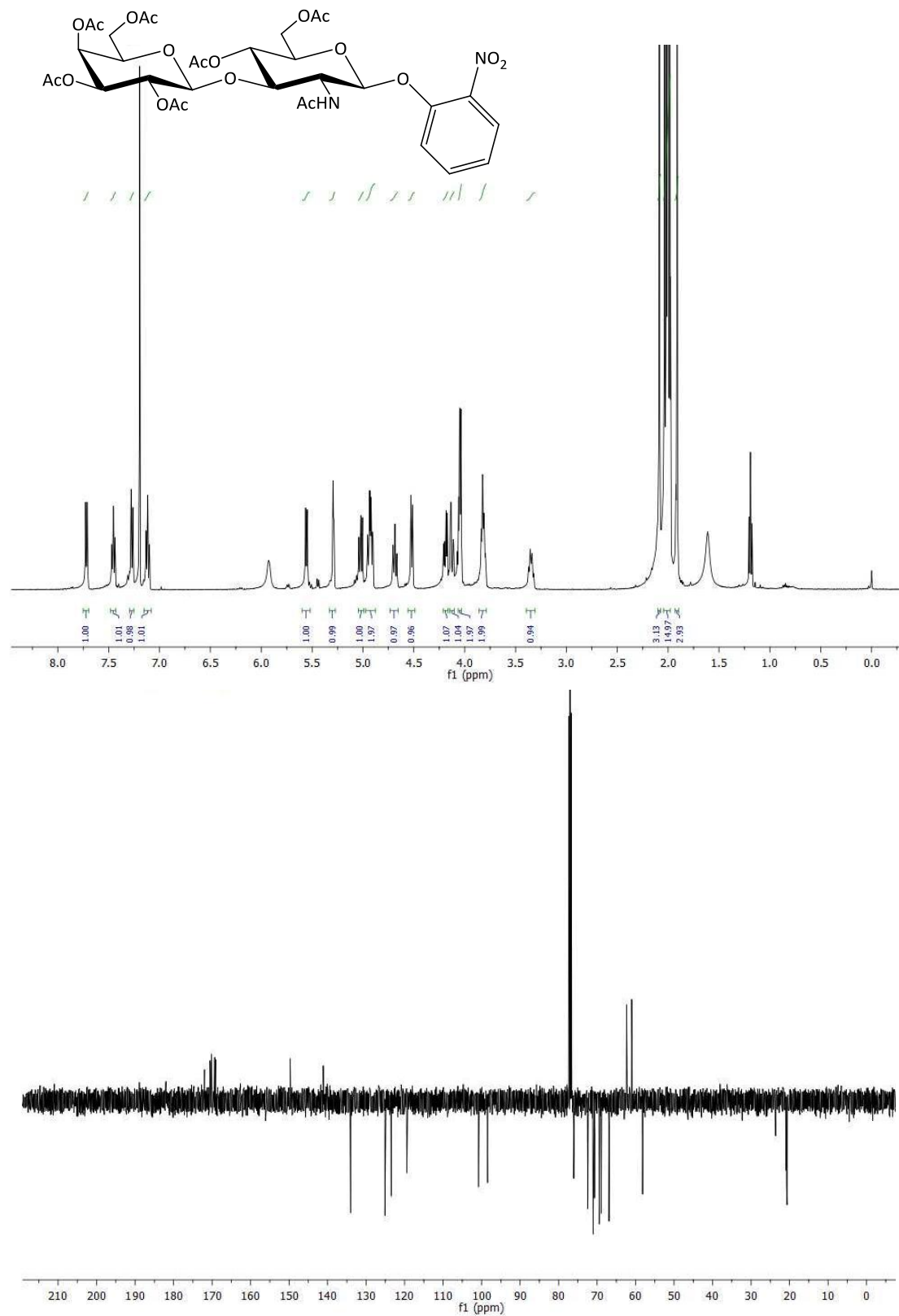


NMR data

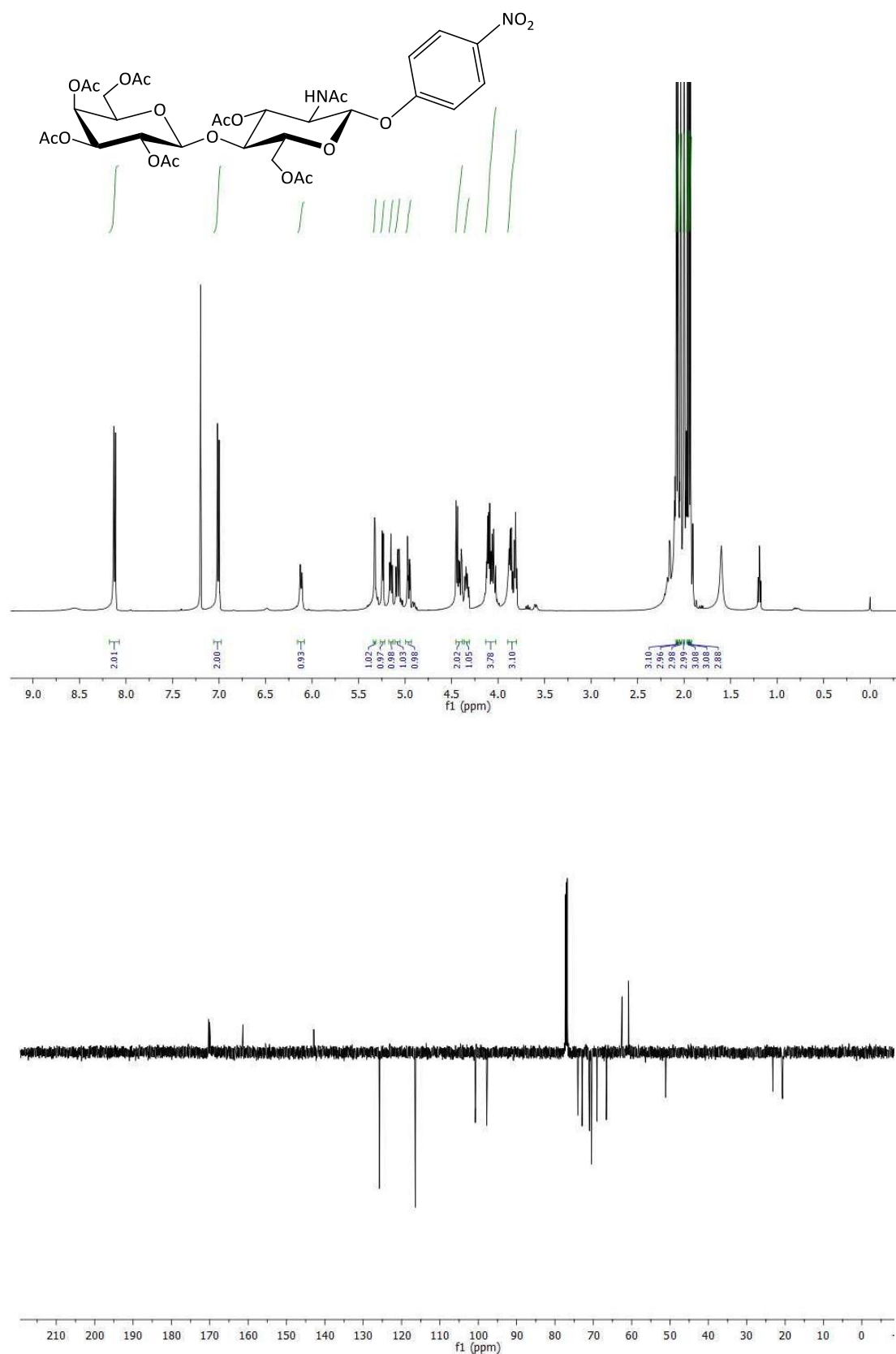
4-Nitrophenyl 2-Acetamido-4,6-di-O-acetyl-2-deoxy-3-O-(2,3,4,6-tetra-O-acetyl- β -D-galactopyranosyl)- β -D-glucopyranoside (4a)



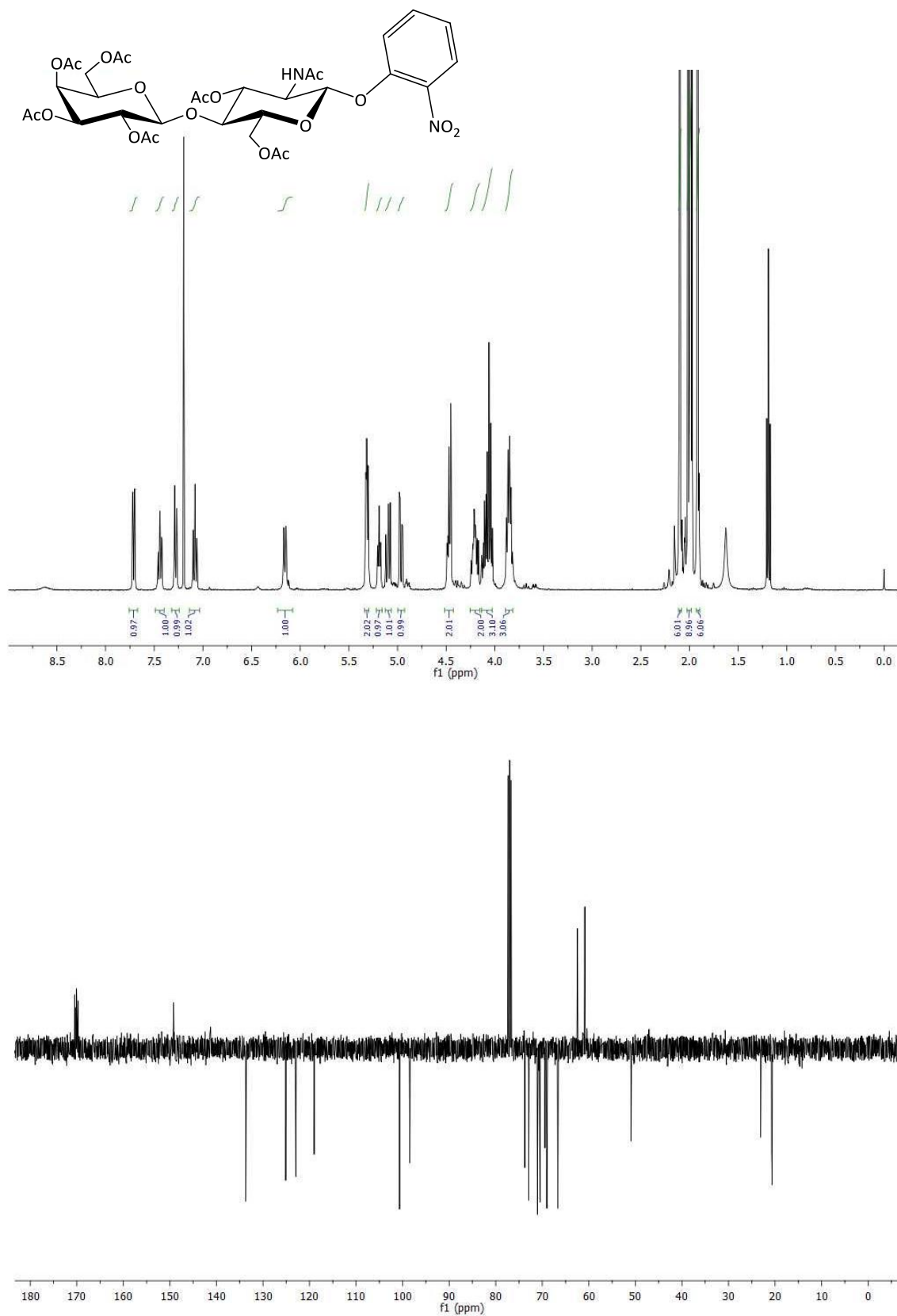
2-Nitrophenyl 2-Acetamido-4,6-di-O-acetyl-2-deoxy-3-O-(2,3,4,6-tetra-O-acetyl- β -D-galactopyranosyl)- β -D-glucopyranoside (4b)



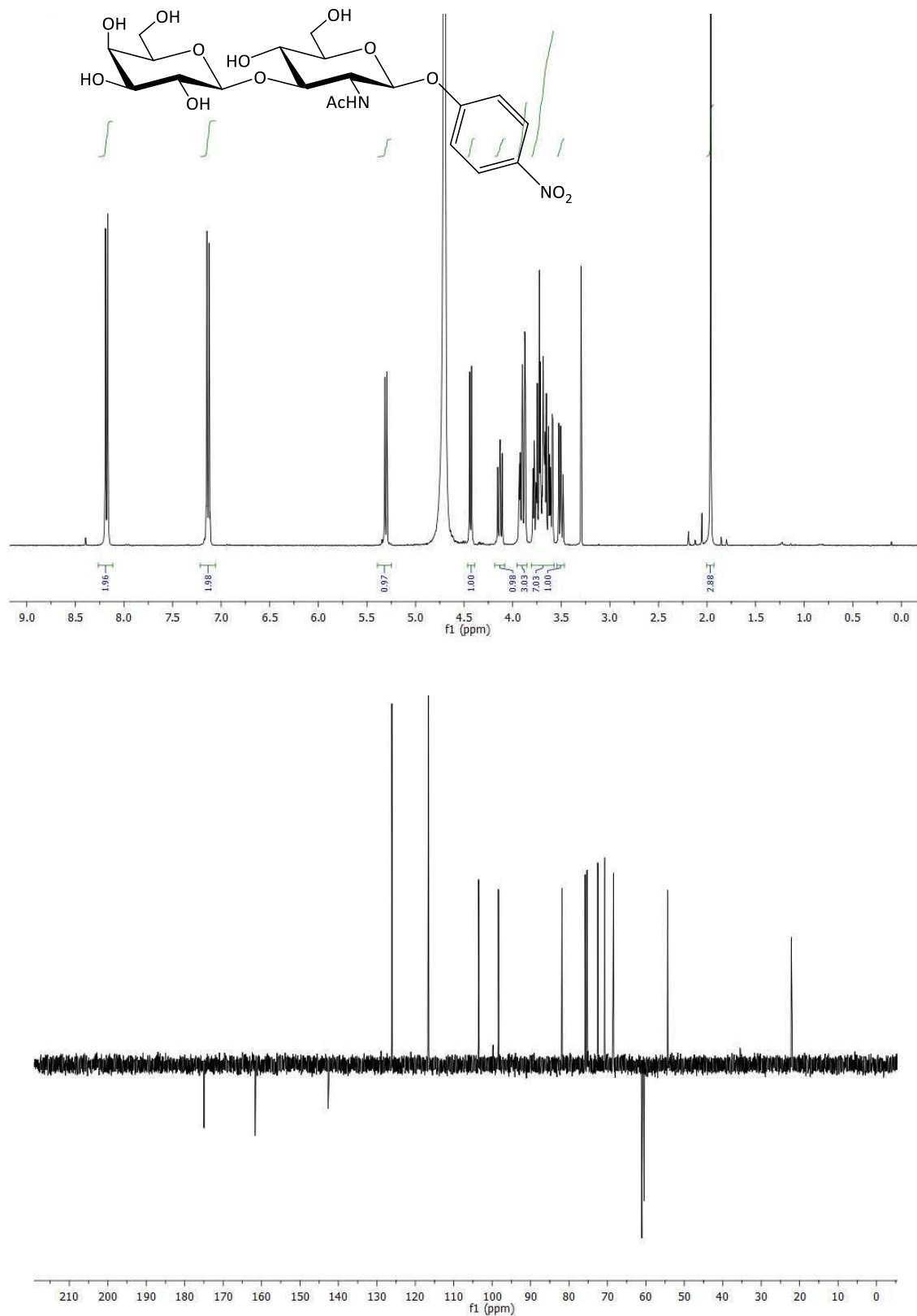
4-Nitrophenyl 2-Acetamido-3,6-di-O-acetyl-2-deoxy-4-O-(2,3,4,6-tetra-O-acetyl-β-D-galactopyranosyl)-β-D-glucopyranoside (4c)



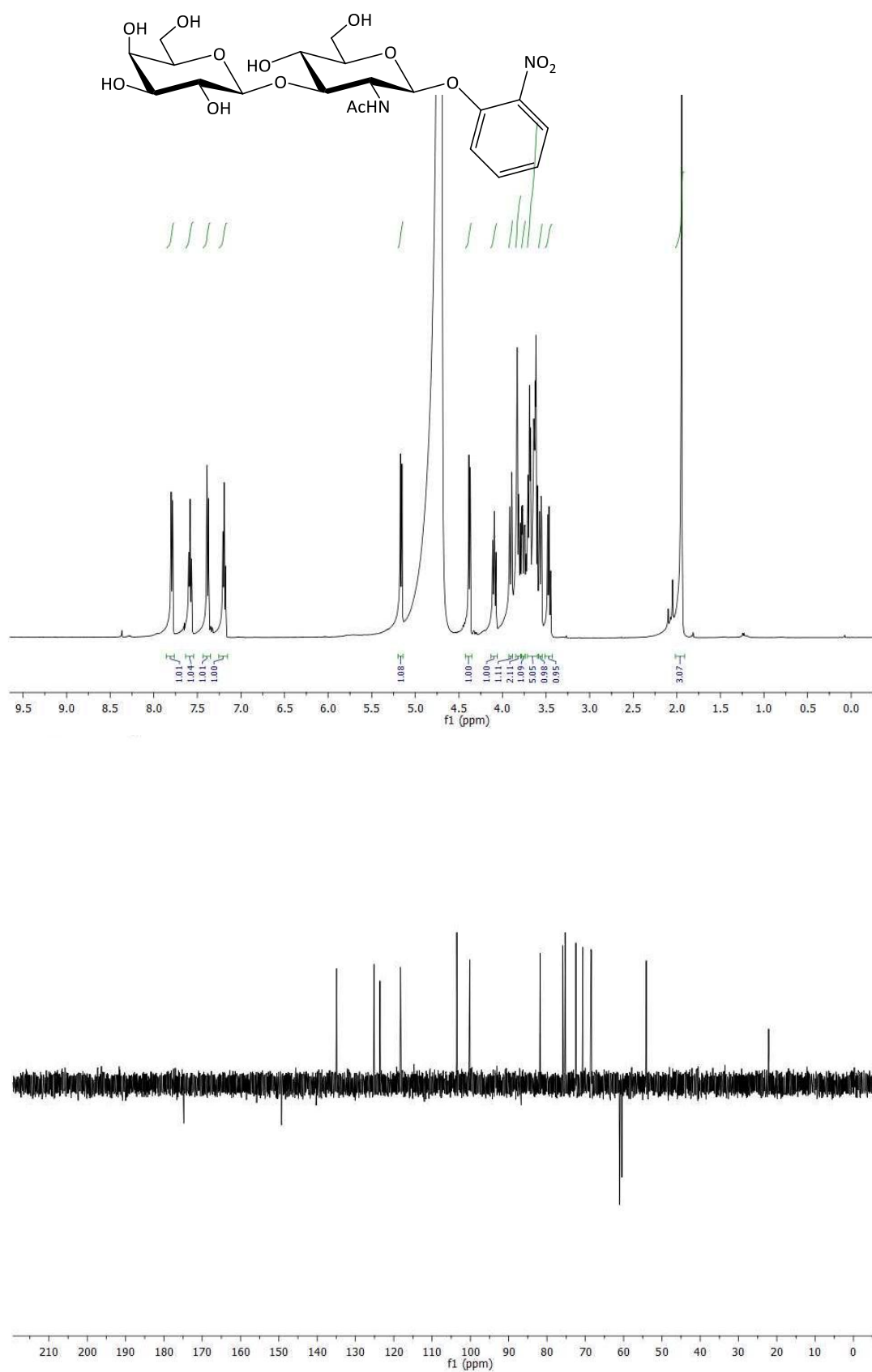
2-Nitrophenyl 2-Acetamido-3,6-di-O-acetyl-2-deoxy-4-O-(2,3,4,6-tetra-O-acetyl-β-D-galactopyranosyl)-β-D-glucopyranoside (4d)



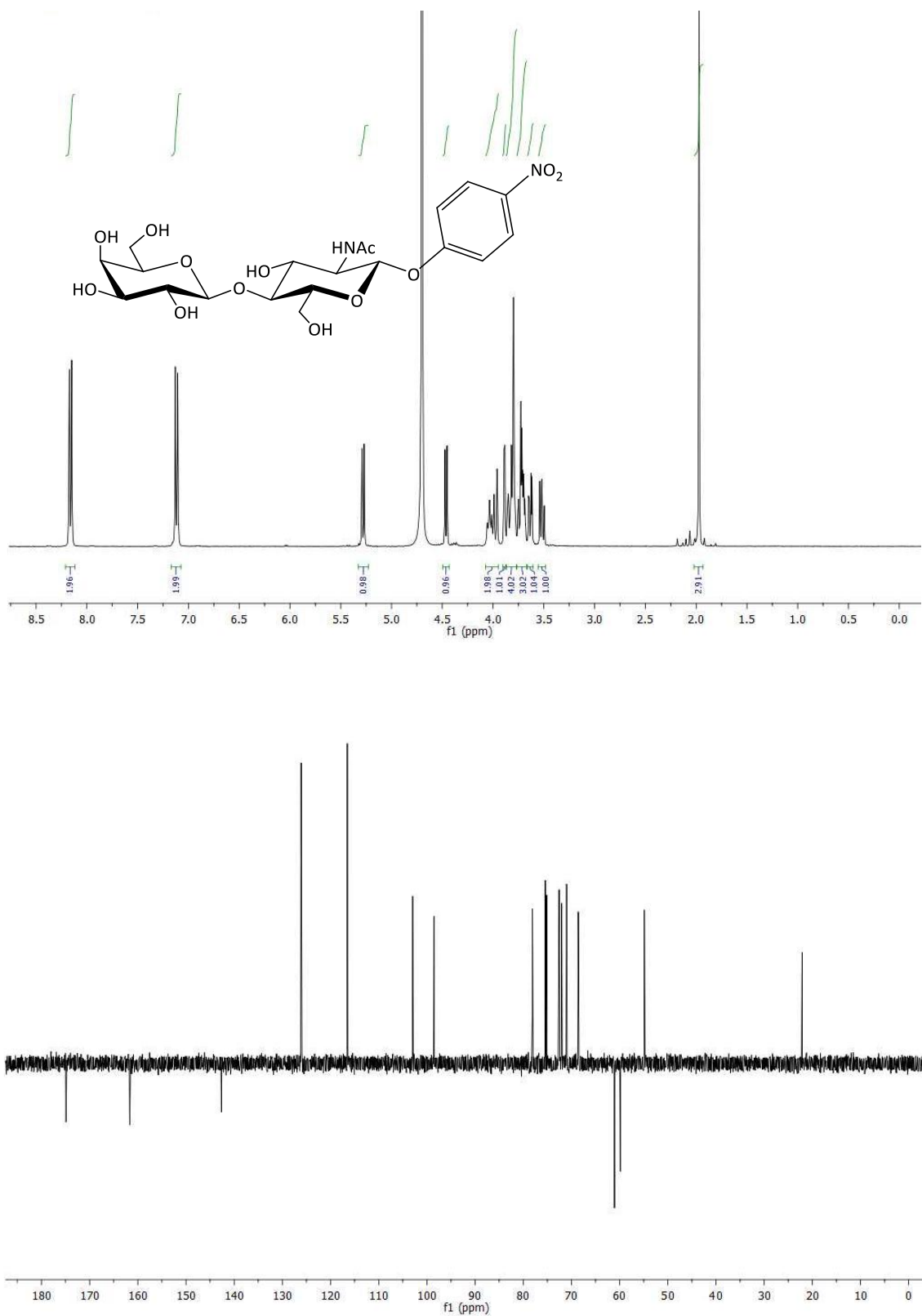
4-Nitrophenyl 2-Acetamido-2-deoxy-3-O-(β -D-galactopyranosyl)- β -D-glucopyranoside (5a)



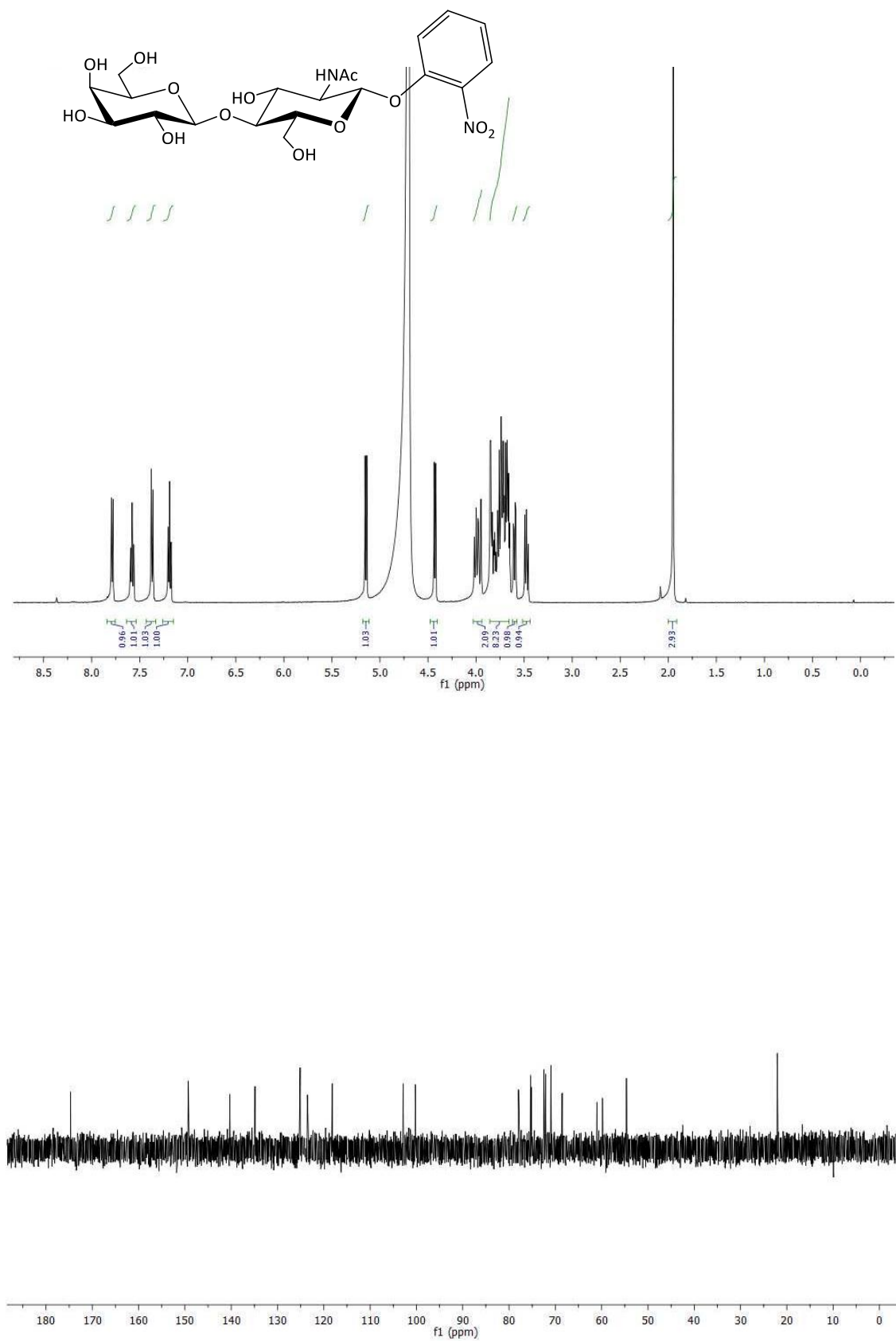
2-Nitrophenyl 2-Acetamido-2-deoxy-3-O-(β -D-galactopyranosyl)- β -D-glucopyranoside (5b)



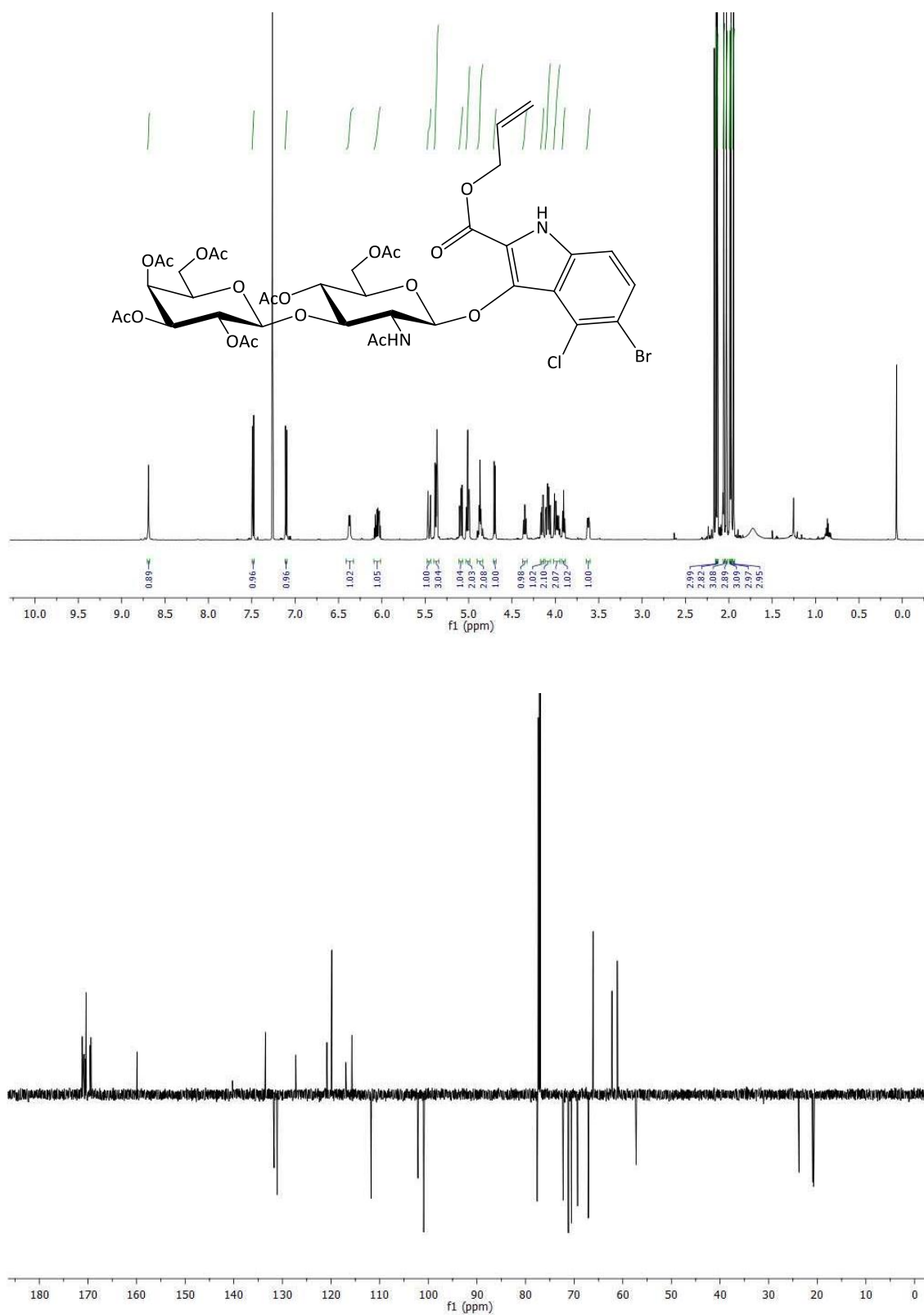
4-Nitrophenyl 2-Acetamido-2-deoxy-4-O-(β-D-galactopyranosyl)-β-D-glucopyranoside (5c)



2-Nitrophenyl 2-Acetamido-2-deoxy-4-O-(β -D-galactopyranosyl)- β -D-glucopyranoside (5d)

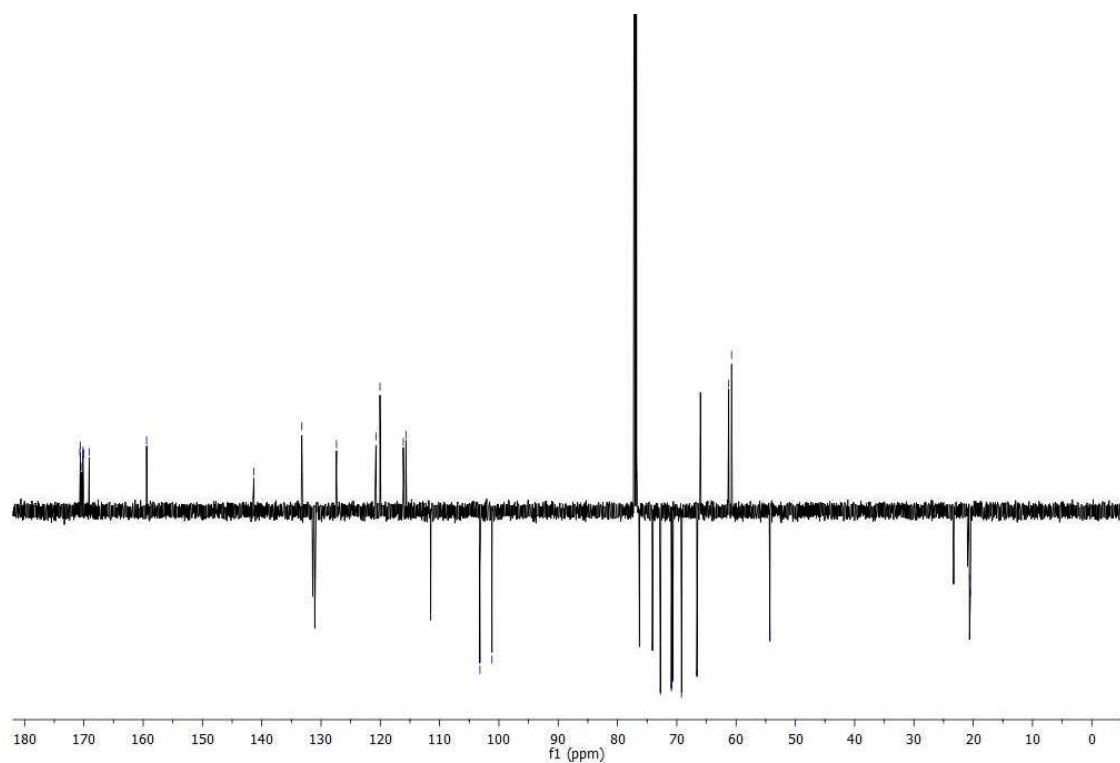
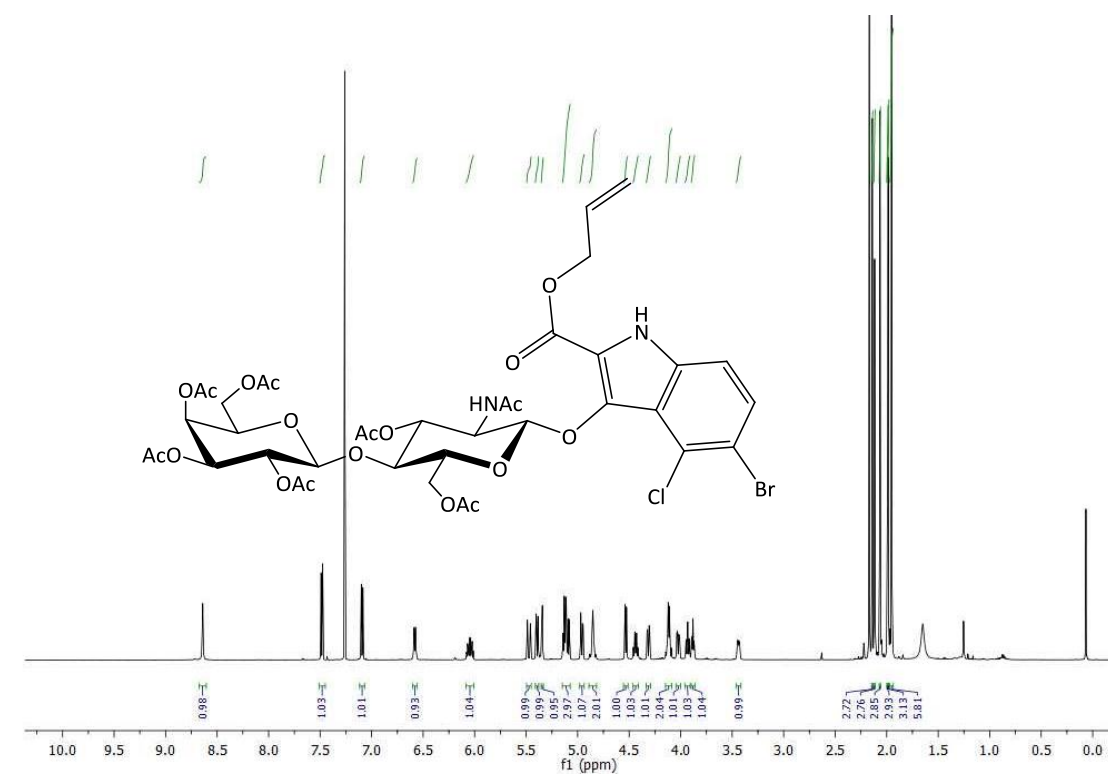


(5-Bromo-4-chloro-indox-3-ylid acid allyl ester) 2-Acetamido-4,6-di-O-acetyl-2-deoxy-3-O-(2,3,4,6-tetra-O-acetyl- β -D-galactopyranosyl)- β -D-glucopyranoside
(6a)

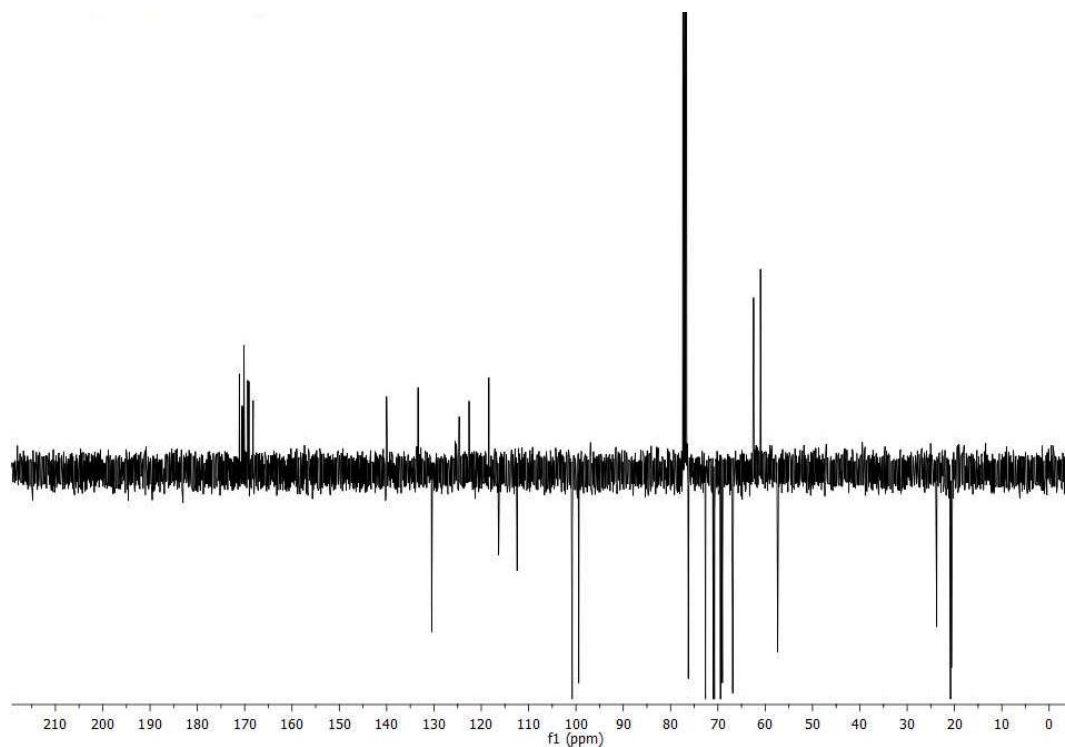
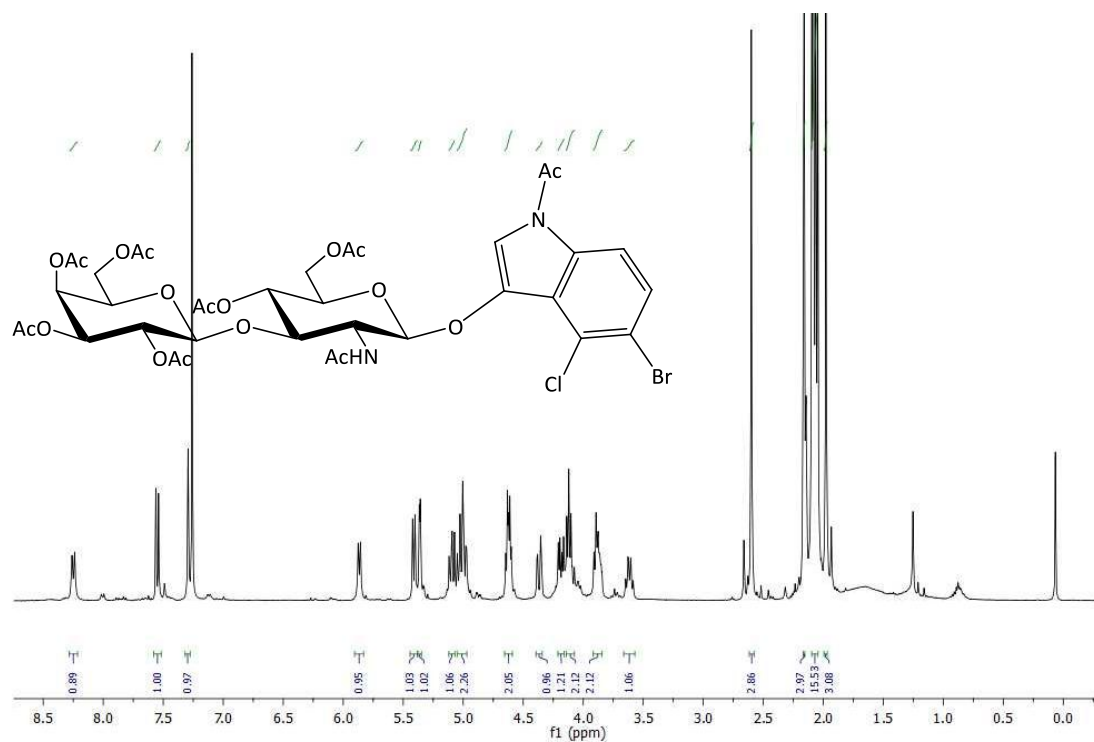


(5-Bromo-4-chloro-indox-3-ylid acid allyl ester) 2-Acetamido-3,6-di-O-acetyl-2-deoxy-4-O-(2,3,4,6-tetra-O-acetyl-β-D-galactopyranosyl)-β-D-glucopyranoside

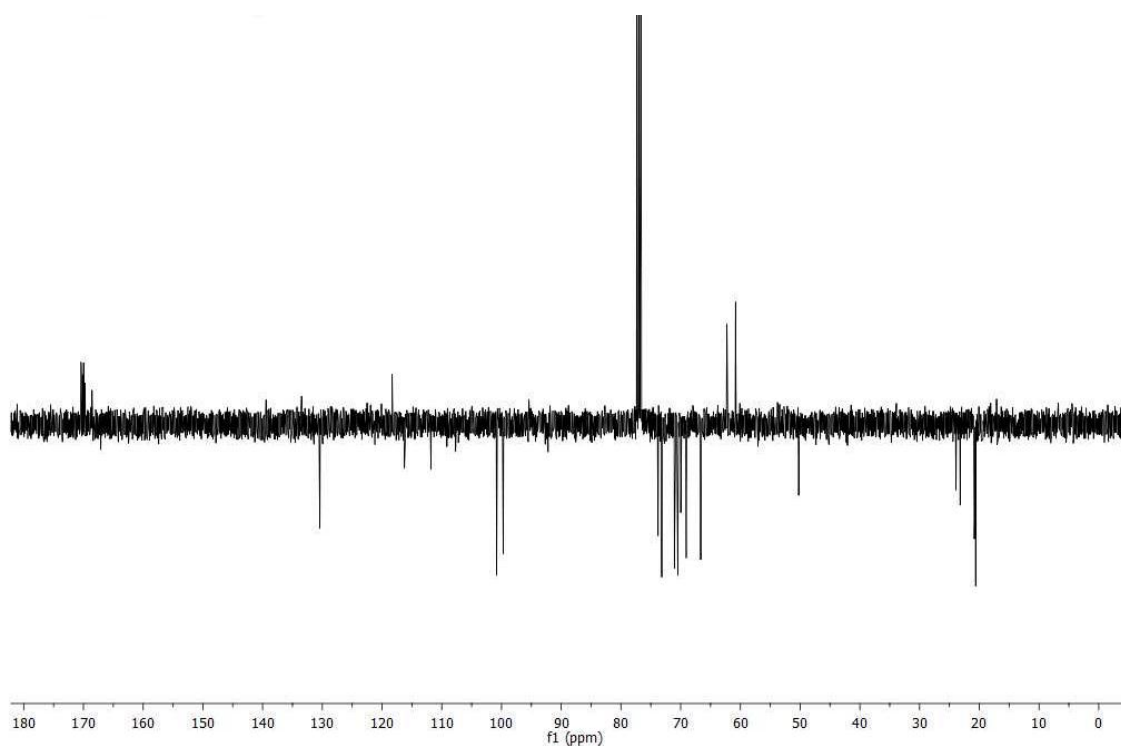
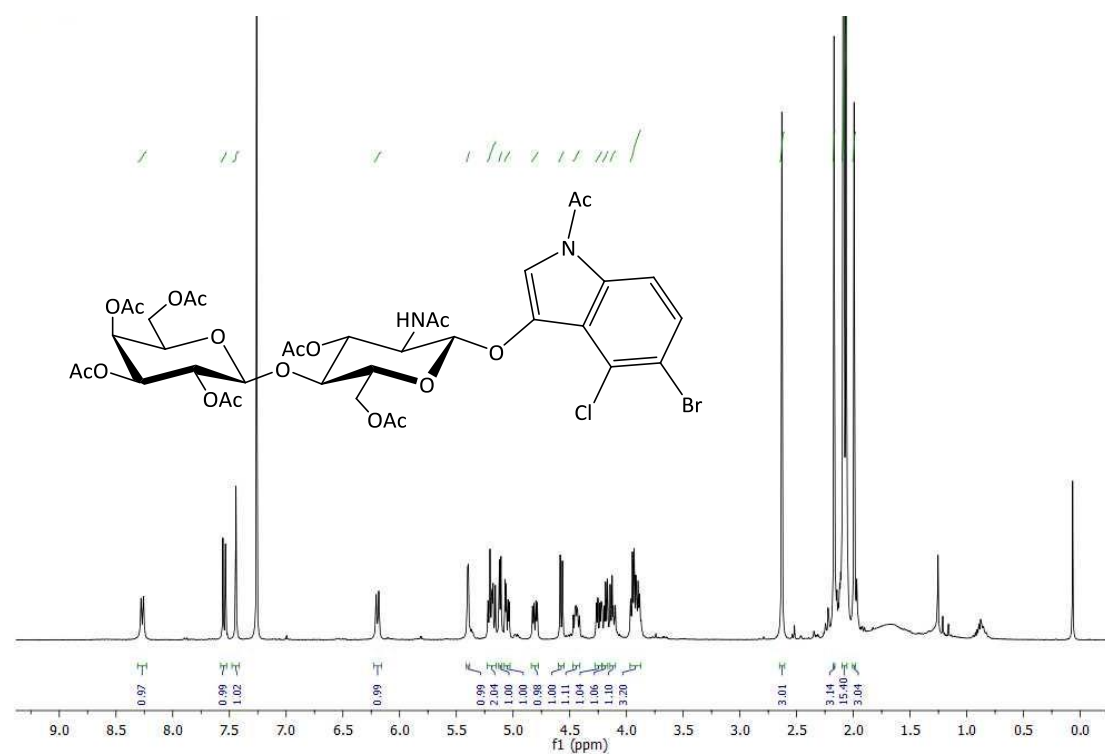
(6b)



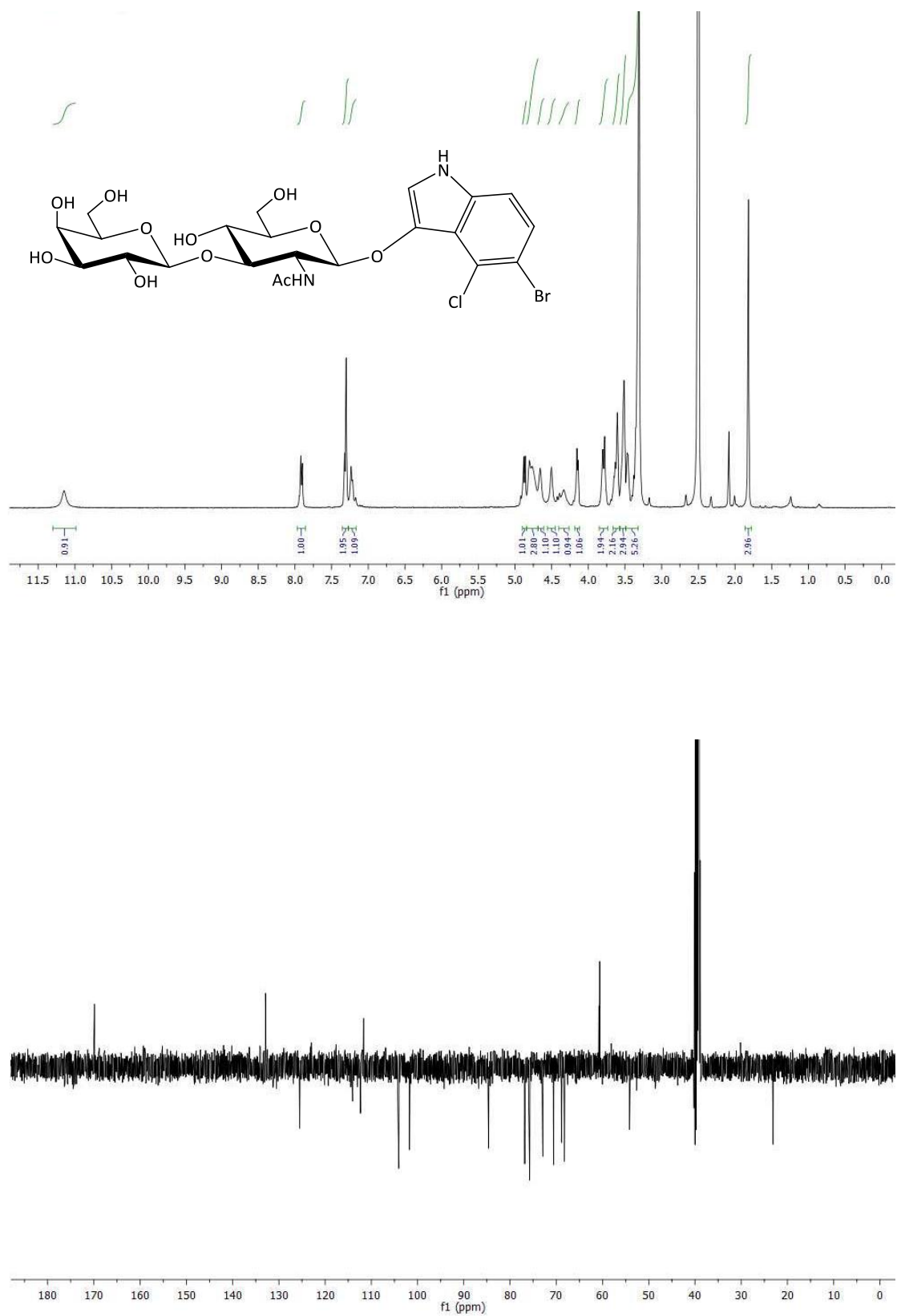
**(*N*-Acetyl-5-bromo-4-chloro-indox-3-yl) 2-Acetamido-4,6-di-*O*-acetyl-2-deoxy-3-
O-(2,3,4,6-tetra-*O*-acetyl- β -D-galactopyranosyl)- β -D-glucopyranoside (7a)**



(*N*-Acetyl-5-bromo-4-chloro-indox-3-yl) 2-Acetamido-3,6-di-*O*-acetyl-2-deoxy-4-*O*-(2,3,4,6-tetra-*O*-acetyl- β -D-galactopyranosyl)- β -D-glucopyranoside (7b)



(5-Bromo-4-chloro-indox-3-yl) 2-Acetamido-2-deoxy-3-O-(β-D-galactopyranosyl)-β-D-glucopyranoside (8a)



(5-Bromo-4-chloro-indox-3-yl) 2-Acetamido-2-deoxy-4-O-(β -D-galactopyranosyl)- β -D-glucopyranoside (8b)

